

- ALL INCLUSIVE 4-DAY / 3-NIGHT -

# STATION STAY

@ MELLEBYE IN THE MIDWEST



Hosted by

**New Leaf Connect**

*2023 Information Leaflet*





# MELLENBYE STATION STAY

Hosted by NEW LEAF CONNECT



## About Mellenbye Station

Mellenbye Station is a working cattle station, situated in the Midwest Region at the northern end of Wheatbelt Country. Just a 2 hour drive inland from the coast, you arrive at the beautiful homestead with an abundance of things to explore and discover. This station stay allows you to disconnect from the hustle and bustle and reconnect with the expanse of land, interact with the local flora, fauna and station pets, as well as admire the incredible night skies away from the city lights.

Mellenbye Station is not only home to Drought Master Cattle, the wonderful host, Shelly, is an avid collector of memorabilia from times gone by and provider of fun. Her collection includes a 1926 Fire Truck, one of the three original Fremantle Trams, a Bucking Bull (which guests can ride!) and a Monster Truck which flies down the station's airstrip at high speeds!

## TOUR HIGHLIGHTS

*Mingenew Bakery*

*Coalseam Conservation Park*

*Seasonal Wildflowers*

*Morawa Museum*

*@ MELLENBYE STATION:*

*Station Tour & Exploring*

*Tram & Monster Truck Ride*

*Bird Watching & Visit to Burra Lake*

*Art Activities*

*Campfires & Stargazing*

*Home & Campfire Cooking*

*Karaoke / Movie / Games Nights*



\*All photographs in this document, unless otherwise stated, have been provide by Australia's Golden Outback.

# ACCOMMODATION OPTIONS & PRICE GUIDE



## Room Options



### *Cabin - 2 people only*

A little bit of luxury - queen sized bed, kitchenette, reverse cycle air-conditioner, ceiling fans, private deck & fire pit.

### *Motel-Style*

Modern room with queen bed, kitchenette, reverse cycle air conditioner, couch and decking, plus private fire-pit.

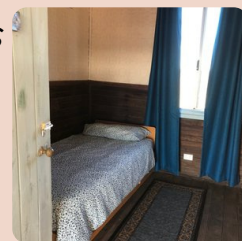


### *Donga-Style*

Larger than normal rooms, queen bed, private ensuites - with a shower and toilet. Deck area with seating.

### *Original Shearer's Quarters*

Constructed of tin, single beds, shared outdoor amenities, block out curtains, no heating or cooling.



## Price Guide

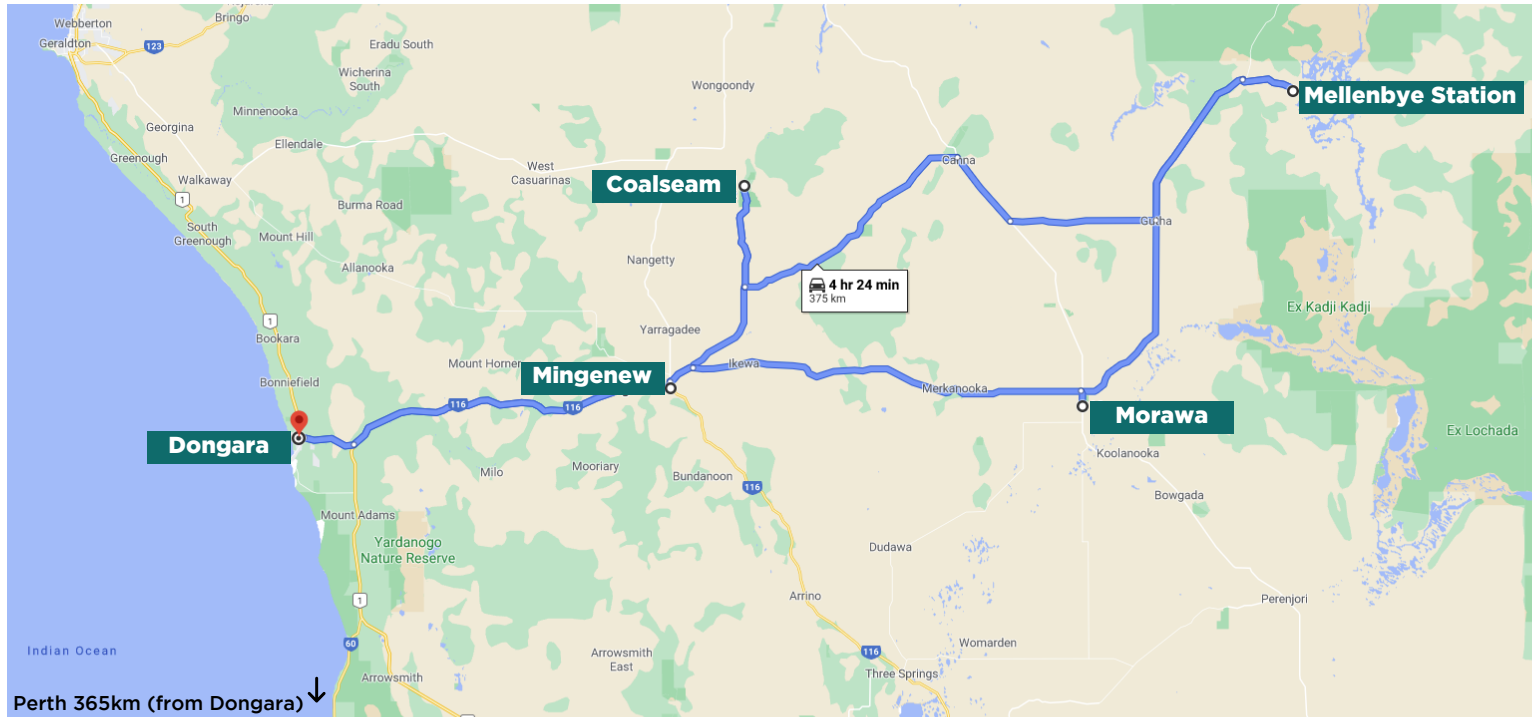
Please reach out to discuss what the best accommodation options are for you and your group as this may increase or decrease individual costs. Prices are rounded to the nearest whole dollar.

Room options are subject to availability.

Accommodation Type	TOTAL	Per Person	Per Person / Per Day
<b>Couple / Twin Share</b>			
Cabin or Motel-Style	\$2,044	\$1,022	\$256
Donga-Style	\$1,852	\$926	\$232
Shearer's Quarters	\$1,708	\$854	\$214
<b>Single</b>			
Cabin or Motel-Style	\$1,358		\$340
Donga-Style	\$1,214		\$304
Shearer's Quarters	\$854		\$214
<b>Family of 4 (2 adults + 2 children under 12)</b>			
Motel-Style	\$3,993	\$998	\$250
Donga-Style	\$3,705	\$926	\$232
Shearer's Quarters	\$3,417	\$854	\$214



# MAP & ITINERARY



## Mellenbye Station Stay Itinerary Overview 2023

*\*Itinerary subject to change due to weather, Station Host availability and unforeseen circumstances.*

### Day 1

- AM** Meeting at 9am, we'll depart from Dongara and drive east to Mingenew. Here we will pick up any guests joining us from this beautiful little country town before exploring the main street.
- PM** Picnic lunch at the Coalseam Conservation Park, well known for it's display of seasonal wildflowers.
- We'll check in to Mellenbye Station and take a walk around to meet the station pets and explore nearby to the homestead.
- Evening** Gathering around the campfire, we'll enjoy a BBQ dinner. Following dinner an 'Aussie Movie Night' in the shearing shed will be on the cards.

### Day 2

- AM** Following breakfast we'll head out further afield to breakaway country. A half-day tour led by Mellenbye host, Shelly, where we will explore and get a real sense of station life.
- PM** With an afternoon destined for relaxation you will have some free time to do as you please. There are lots of things around the homestead to keep you busy if you're not one to sit still. Including lots of station pets always ready to make new friends - goats, donkeys and even a camel!
- Evening** We'll come together for a roast dinner. The evening activities are optional, and can include a ride on the bucking bull, lifting the roof off of the shearing shed with some karaoke or impromptu playing of instruments if you're that way inclined.





## Day 3

**AM** Sundays are for sleep-ins and cooked breakfasts.

Late morning we'll head to Burra Lake on the old tram for some birdwatching and a picnic lunch.

**PM** In the afternoon seasonal wildflower viewing will be on offer as well as some old arcade and board games for those who wish to partake.

**Evening** By day 3 the giant pizza oven will be calling our name where guests will add their own toppings to pizza bases and feast by the campfire. With no lights for miles and the rare sighting of clouds Mellenbye is an incredible place for stargazing.

## Day 4

**AM** After enjoying our last breakfast on the Station, we'll let our hair out and hoon down the airstrip in Shelly's very own Monster Truck before reducing the speed and re-boarding the New Leaf Connect bus. Checking out of the Station we'll make our way back to Dongara, via Morawa for an explore and wander down the main street and to enjoy a picnic lunch.

**PM** We will arrive back in Dongara between 2pm and 3pm.

## Things to note:

- *This tour is welcoming of all ages and is limited to 10 guests only.*
- *The weather and Station host Shelly's availability may result in a modified itinerary.*
- *All food is provided, additional purchases can be made at guests own cost at stops.*
- *Any food allergies will be accommodated for as best as able. A complimentary glass of wine or beer is provided with evening meals. If you wish to bring additional drinks you are welcome to.*
- *We please ask that guests are mindful of limited storage space for luggage so please only bring 1 small carry-on size luggage or small-medium sized duffle bag per person.*
- *Easy walking level, but sturdy shoes are a must. Activities are options, but to participate in all activities guests must be able to step up equivalent of 3 steps to enter the tour van and tram, and be able to climb up a steep set of stairs for the monster truck ride.*
- *Departures from Dongara and Mingenew available.*



**For more information or to book give us a call!**

Turn over a new leaf, locally. Connect with us today.