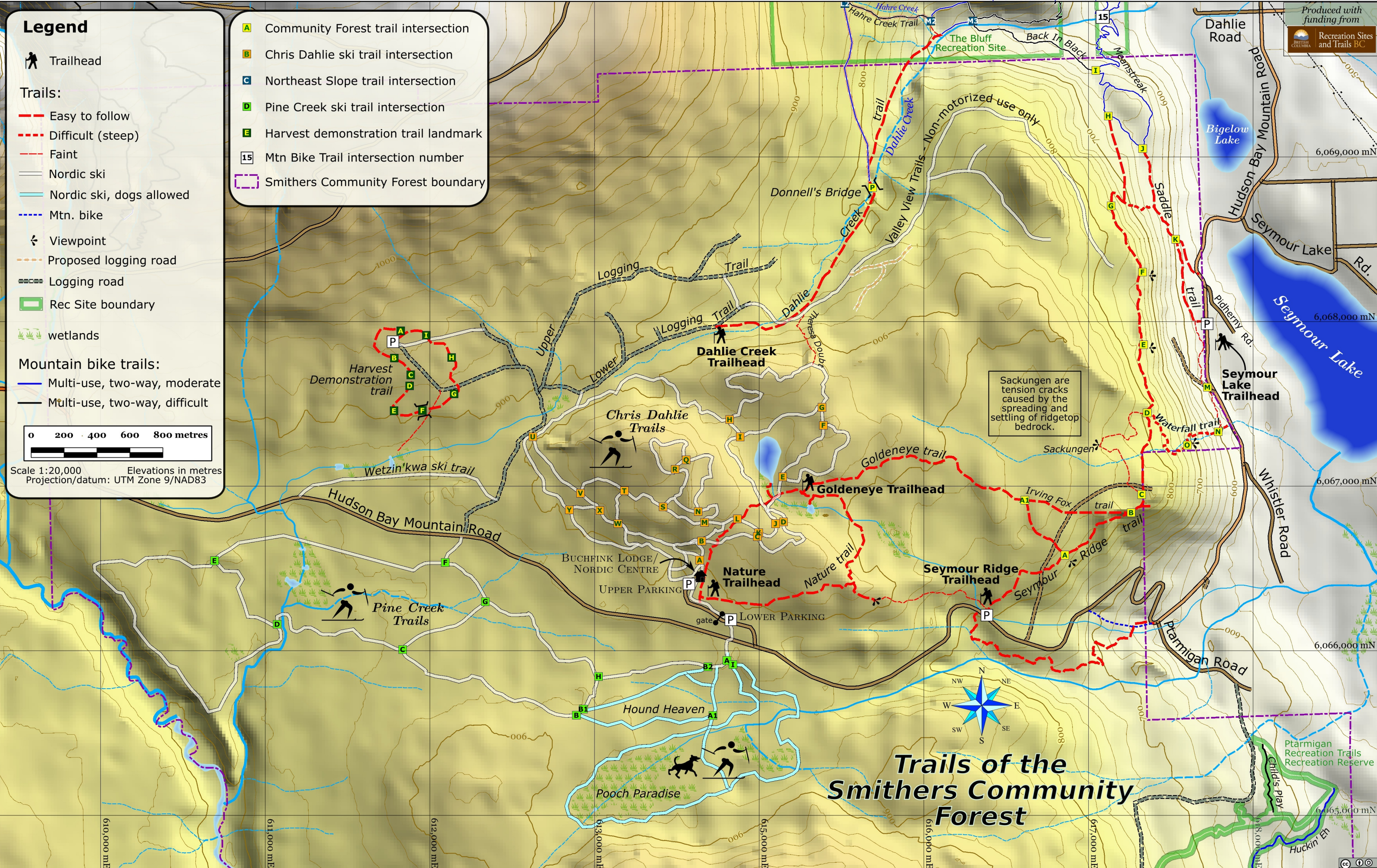


Legend

- Trailhead
- Trails:**
 - Easy to follow
 - Difficult (steep)
 - Faint
 - Nordic ski
 - Nordic ski, dogs allowed
 - Mtn. bike
 - Viewpoint
 - Proposed logging road
 - Logging road
 - Rec Site boundary
 - wetlands
- Mountain bike trails:**
 - Multi-use, two-way, moderate
 - Multi-use, two-way, difficult

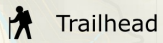
- Community Forest trail intersection
- Chris Dahlie ski trail intersection
- Northeast Slope trail intersection
- Pine Creek ski trail intersection
- Harvest demonstration trail landmark
- Mtn Bike Trail intersection number
- Smithers Community Forest boundary

Scale 1:20,000 Elevations in metres
Projection/datum: UTM Zone 9/NAD83



Trails of the Smithers Community Forest

Legend



Trailhead

Trails:

Easy to follow

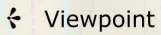
Difficult (steep)

Faint

Nordic ski

Nordic ski, dogs allowed

Mtn. bike

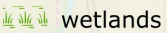


Viewpoint

Proposed logging road

Logging road

Rec Site boundary



wetlands

Mountain bike trails:

Multi-use, two-way, moderate

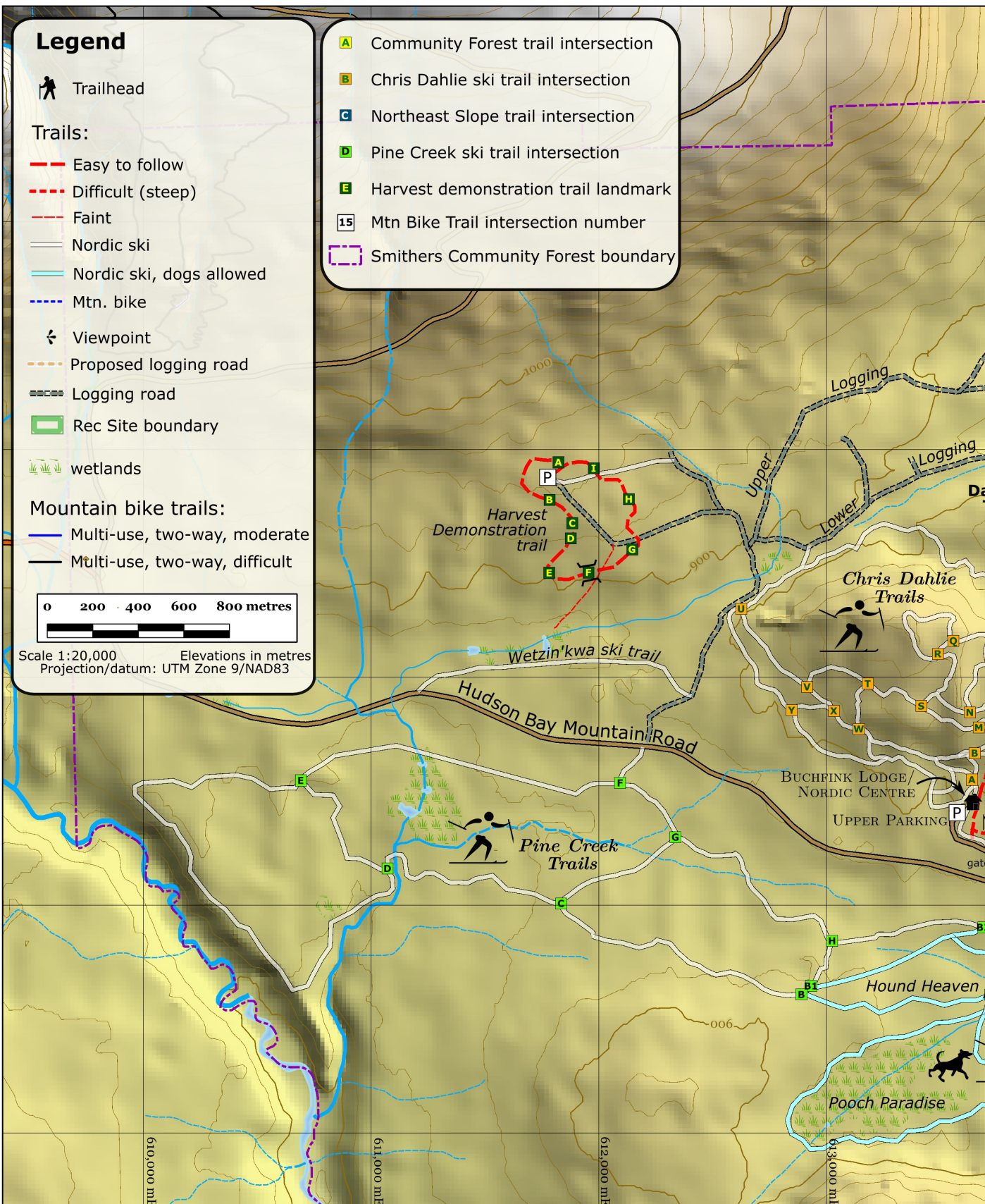
Multi-use, two-way, difficult

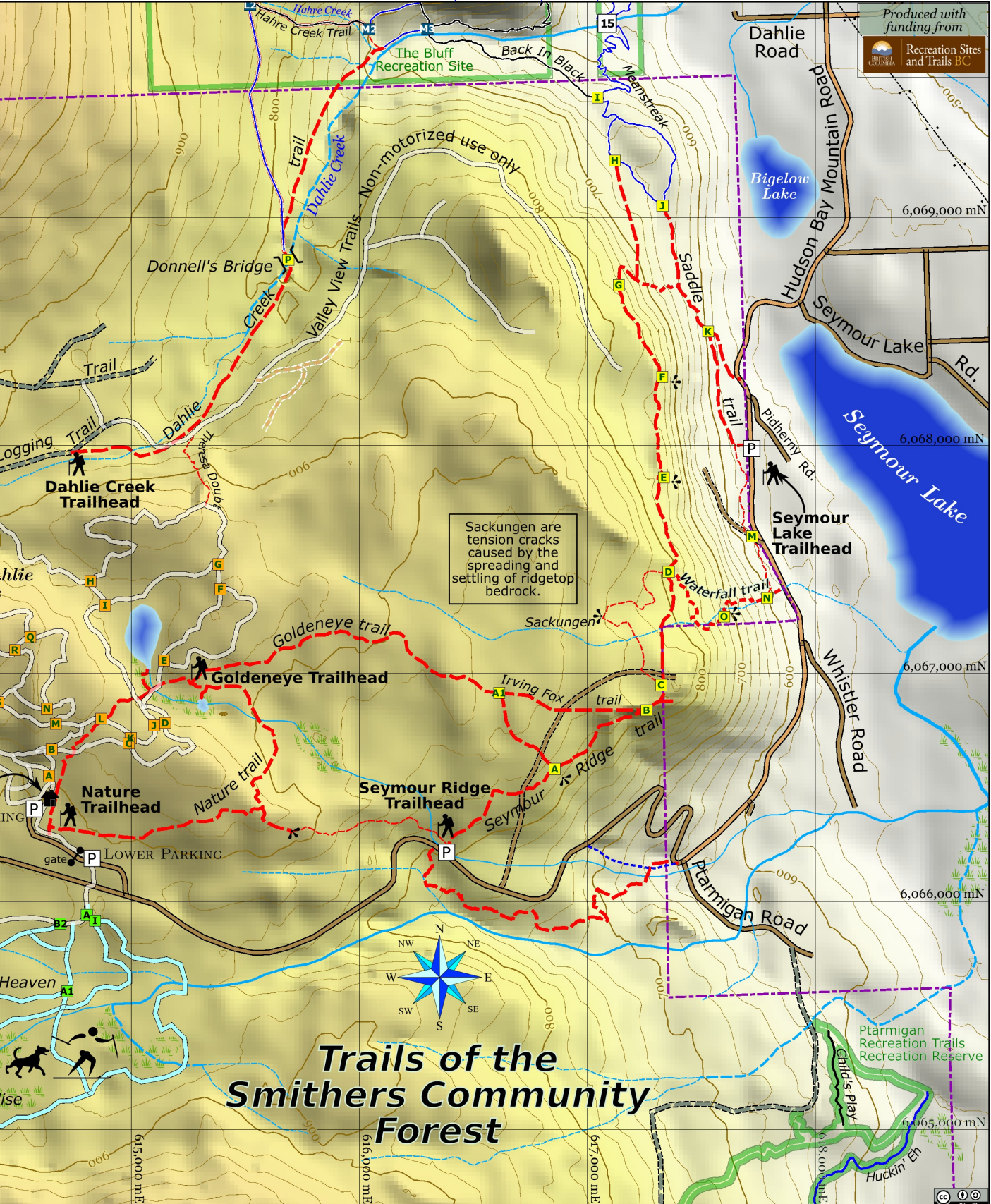
0 200 400 600 800 metres



Scale 1:20,000 Elevations in metres
Projection/datum: UTM Zone 9/NAD83

- Community Forest trail intersection
- Chris Dahlie ski trail intersection
- Northeast Slope trail intersection
- Pine Creek ski trail intersection
- Harvest demonstration trail landmark
- Mtn Bike Trail intersection number
- Smithers Community Forest boundary





Trails of the Smithers Community Forest