

The logo features a bright pink circle containing the text 'ASK4' in a white, stylized, rounded font. Below the circle, a white line descends from the top edge of the circle, passes through the center, and then turns left at a 90-degree angle, extending towards the top right corner of the image. The background is a solid dark blue.

ASK4

DATA CENTRE



Introduction



About



Specification



Options



Use Cases



Contact

Host your infrastructure in our carrier neutral, Sheffield data centre.

Hosting your critical IT systems in the ASK4 Data Centre will ensure your business continues wherever your workforce is based. Bring your own equipment or host your infrastructure in ASK4's competitively priced private cloud environment.

We will take care of the rest.

ASK4
DATA CENTRE





“

**A highly resilient,
diversely connected,
secure data centre
environment.**

”

Regional data centres such as the ASK4 Data Centre appeal to a broad range of businesses:

1

Telecoms operators seeking to expand their geographic network connectivity

2

SMEs looking to centralise critical IT infrastructure for security and performance benefits

3

Tech companies looking to provide a wider range of data services to their customers

We provide a highly resilient, diversely connected and secure data centre environment, allowing you to concentrate on growing your own business.



Our facility speaks for itself

The ASK4 Data Centre is a key part of ASK4's 100Gb/s national network. It is well connected to key network locations in London, Manchester and Leeds via our high capacity network via multiple Tier 1 network providers.

100% RENEWABLE ENERGY

The ASK4 Data Centre is powered by 100% renewable energy, sourced from wind, hydro and solar power. The move to renewable energy allows the Data Centre to dramatically reduce its carbon footprint, eliminating up to 399 tonnes of CO2 emissions in the first year.¹

This allows ASK4 to provide the best possible service for clients, alongside reducing the Data Centre's environmental impact. This is a significant benefit to clients who require their partners commitment to sustainability to be evidenced in the daily running practice.

1 National Fuel Mix disclosure based on Average Carbon emissions from all UK generated electricity (which is 204.8g CO2/kWh for the year 2019/20). The unit of g CO2/kWh is the grams of carbon dioxide for every kWh of electricity generated.



POWER

The Data Centre is protected by uninterruptible power supplies (UPS), with an on-site dedicated HV substation. This means the lights will always stay on during short power interruptions or complete outages.

Specification:

- On-site dedicated HV substation
- 1.5 MVA of power
- Socomec Delphy Green Power N+1 UPS System
- 8, 16 and 32 Amp racks (subject to availability)
- 2 x 550KVA prime rated generator launch, up to 3 parallel in line with load requirements
- Schneider Electric and General Electric (GE) power distribution system



COOLING & FIRE DETECTION

The ASK4 Data Centre environment is stringently controlled to ensure both temperature and humidity are maintained at optimum levels for the smooth running and maintenance of all active equipment.

Specification:

- Airedale Smartcool down flow Air Conditioning system N+1 configuration
- Cold aisle containment system using Cannon Data Room Cabinet system
- VESDA fire detection
- FM-200 fire suppression
- 24/7 monitored fire alarm

SECURITY

The ASK4 Data Centre houses and connects critical infrastructure, and we take security extremely seriously. The entire site is manned and monitored via CCTV 24/7. We also operate strict access protocols to ensure equipment and data is secure.

Specification:

- Detached building in secure compound
- Securex Perimeter security fence system
- 24/7 monitored CCTV system with police priority response
- Two-factor authentication access control system
- ISO27001:2013 certified





“

**The ASK4 Data Centre
is powered by 100%
renewable energy,
sourced from wind, hydro
and solar power.**

”

ASK4
DATA CENTRE

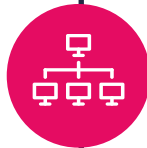
Standard and Bespoke Rack Configurations

Racks are available as 1/2 rack (21u), full rack (40u) or full pods (16 racks) - subject to availability.



STANDARD PRIVATE RACK

You can install your own equipment into a private and secure rack space. Access to the space is restricted by a combination lock.



STANDARD SHARED RACK

You can install your own private rack inside our facility with 24/7 access to your equipment. You will be accompanied to your space by a member of the ASK4 Data Centre team to ensure security for all customers.



BESPOKE OPTIONS

We currently support a wide variety of customer requirements, and we are happy to accommodate bespoke requests for multiple racks or pods, subject to availability, alongside additional privacy or security requirements.

Customer Scenario 1

CUSTOMER:

Firm of Accountants with multiple offices in 4 UK cities

REQUIREMENTS:

The client is closing a number of office spaces and wants to locate their server (which runs specialist accounting software) offsite. They want to do this to ensure security and power supply, and to optimise the user experience for team members accessing the server wherever they are working - be that in one of the offices or from home. Emails are run via Office 365.

SOLUTION:

Following a full connectivity review, new services to each office are proposed to meet their unique requirements. One site which is still in contract with the incumbent provider is still included in this new design by utilising site based hardware to provide an encrypted link to the new centralised infrastructure. At the centre of the solution is a rack in the ASK4 Data Centre where the client has relocated their existing physical servers. These are then accessible, not only to the 4 locations, but also homeworkers at increased speed and with guaranteed reliability.

Customer Scenario 2

CUSTOMER:

Tech firm with 1 large office

REQUIREMENTS:

The client is rapidly expanding and has an aging IT infrastructure housed on the ground floor of their office. They are looking at locating their server offsite to repurpose the space it currently occupies, alongside considering upgrading their equipment.

SOLUTION:

The client chose to go with a single multi-use 1Gbps fibre from the office to the ASK4 Data Centre, combining a review of both connectivity and infrastructure. Instead of relocating aging systems or purchasing expensive new hardware, the client chose to migrate to the ASK4 private cloud. Now, expansion or specification adjustments no longer devour protected capital expenditure budgets and are scalable to grow quickly with the business on a flexible monthly basis.

Contact

Please get in touch and a member of the team will be happy to help.

datacentre@ask4.com

+44 (0)114 303 3200