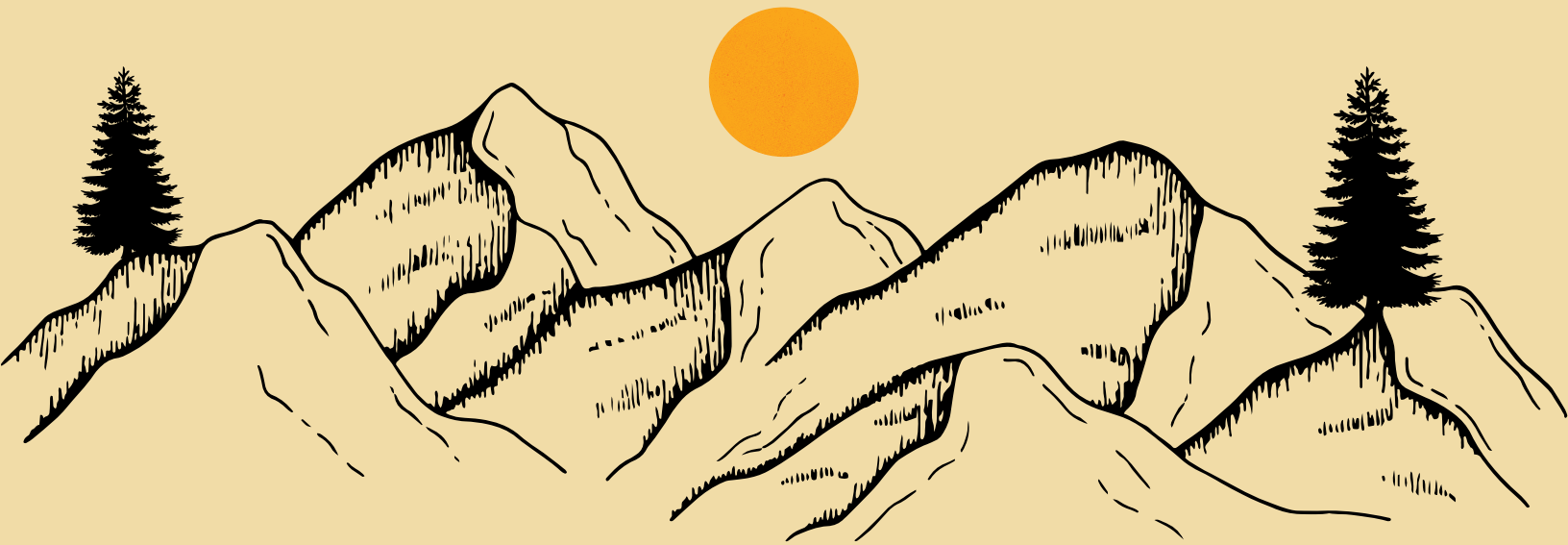


— The Oregon Interscholastic Cycling League presents —

RACE #1

BUTTE, SCOOT AND BOOGIE PROLOGUE



AUGUST 24, 2024



WWW.OREGONMTB.ORG

EVENT WEEKEND SCHEDULE

MORE INFO ON START TIMES WILL BE
UPDATED HERE AS WE FINALIZE
DETAILS!

OFFICIAL PRE-RIDE TIMES

RACE PLATES REQUIRED FOR PRE-RIDING!

FRIDAY: 3-6PM. **GRIT RIDE AT 4:30**

SATURDAY: 7-8

TEAMS MAY UNOFFICIALLY PRE-RIDE THE COURSE UNTIL DUSK



WE ACKNOWLEDGE THAT THESE EVENTS OCCUR ON THE TRADITIONAL HOMELANDS OF THE OF
CONFEDERATED TRIBES OF WARM SPRINGS, INCLUDING NŪŪMŪ, CAŪUSE, UMATILLA, AND

WALLA WALLA

REGISTRATION

Race Plates

Number plates can be picked up at the registration/merch tent on Friday-Sunday. Each student is assigned a number plate for the season. You will be using the same race plate (your race number) for your bike for the whole season. If you lose it, you can get another one for \$10 at the merchandise booth. Coaches, parents, and student-athletes can pick up race plates.

THERE IS NO ON-SITE REGISTRATION. STUDENTS MUST REGISTER ONLINE.

VOLUNTEERS

Our races wouldn't be what they are without our incredible volunteers! If you have a couple hours to spare and want to help make this race happen, [sign up online](#) or on-site at the volunteer tent (next to registration). From course marshaling to finish line support to helping stage our riders, we can use your help!

DIRECTIONS & PARKING

Address: 1875 NE Ironhorse Dr, Prineville, OR 97754 (Barnes Butte Elementary School)

The best address we've got for navigation is to Barnes Butte Elementary School. The event will be staged down the road at Barnes Butte Trailhead. Look for signs to get you to the event space!

Parking

Our Oregon League staff will help you park in the designated parking areas. Handicapped parking will be available. Please allow ample time to get into the venue.

WHILE YOU'RE VISITING

There are loads of awesome trails to check out while you're in Prineville! A couple of our recommendations:

- [Lookout Mountain](#)
- [66 Trails](#)
- [Prineville Bike Park](#) (but beware of goat heads and punctures!)

COACH MEETING

Saturday at 7:45am

Coaches, this is where you'll get info about the race day, such as risk management, race conditions, and anything else of importance to mention. Sometimes we have to make changes due to weather or other circumstances, so it's important you're at the meeting to keep your team and riders informed! Meet near the registration tent.

CAMPING AND LODGING

****NO FIRES OR OPEN FLAME AT VENUE****

1. Onsite near Barnes Butte, FREE and right next to the race course! No reservations necessary. First come, first served. Plenty of space for everybody looking to camp in a tent, camper van, or RV. No electric services. No water. See last page for map and more info.
2. Hotels - Various within town
3. Airbnb options - Various within and outside of town

OTHER IMPORTANT NOTES

- **NO FIRES OR OPEN FLAME AT THE VENUE.**
- **There is no water source onsite**, but you're welcome to fill up at Wildride Brewery about 1/4 mile from the venue. Just let them know you're with the league!
- Please don't smoke in the team pit or infield areas
- No inappropriate language is allowed in team pit or infield areas
- Any conflicts and/or disputes with any race official or volunteer will be dealt with outside the team pit area. Violation of this will result in team penalty and/or expulsion from team pit and infield area.
- No fires or open flame. Propane bbq's okay for cooking only.
- Keep dogs on leashes and clean up after your dogs.
- Pack out all trash. There is no on-site dumpster for refuse.



WE LOOK FORWARD TO AN EXCITING AND
FUN WEEKEND WITH YOU!

IF YOU HAVE ANY QUESTIONS, SEND THEM TO HEATHER@OREGONMTB.ORG

COURSE INFO

Previous courses we've used are [here](#) and [here](#).

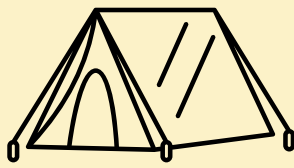
We may use one of these options - or mix it up! The course will be set and ready for pre-ride on Friday, 8/23. Either way, if you pre-ride the previous courses we've used, you'll have a good idea of the trails and terrain.

Camping Map

w/ Start, Finish, and Pit Zone

****NO FIRES OR OPEN FLAME AT VENUE****





Barnes Butte Camping Info

****NO FIRES OR OPEN FLAME AT VENUE****

What days are camping allowed?

You're welcome to camp on Thursday, Friday and Saturday nights. If you're camping on Thursday, come any time after 4pm.

Where's camping located?

The address to the camping area is: 1875 NE Ironhorse Dr, Prineville, OR 97754. Map to the Barnes Butte Trailhead and that will get you there. You'll see a big open field on the lefthand side of the road as you drive in with yellow signs pointing to CAMPING. The canal on the border of the camping area does NOT HAVE A RAIL OR FENCE, so be mindful when walking or riding near there. See map on next page for more info.

How do I get a spot?

Once you're in the field, find a spot and set up! This will all be first-come, first-served, and there's plenty of space for everybody. Please park close to each other and keep your area compact - we have a lot of families eager to camp and need to maximize the space available.

Are there any electrical hook-ups? Water? Toilets? Showers?

This is just a big ol' grassy field. There are no electrical outlets/hook-ups or water, but we will have porta johns available. If you want to shower, check out the facilities at Prineville Reservoir State Park (~20 minutes from the venue).

Are fires permitted?

No. Please do not have open flames in this very dry, crispy field.

What about generators?

We are being very cautious about anything that can cause fires, and that includes generators. If you're using one, have a fire extinguisher nearby. Please turn off all generators by 8PM so that your neighbors can get some rest before their race day!

QUESTIONS? Email us: heather@oregonmtb.org