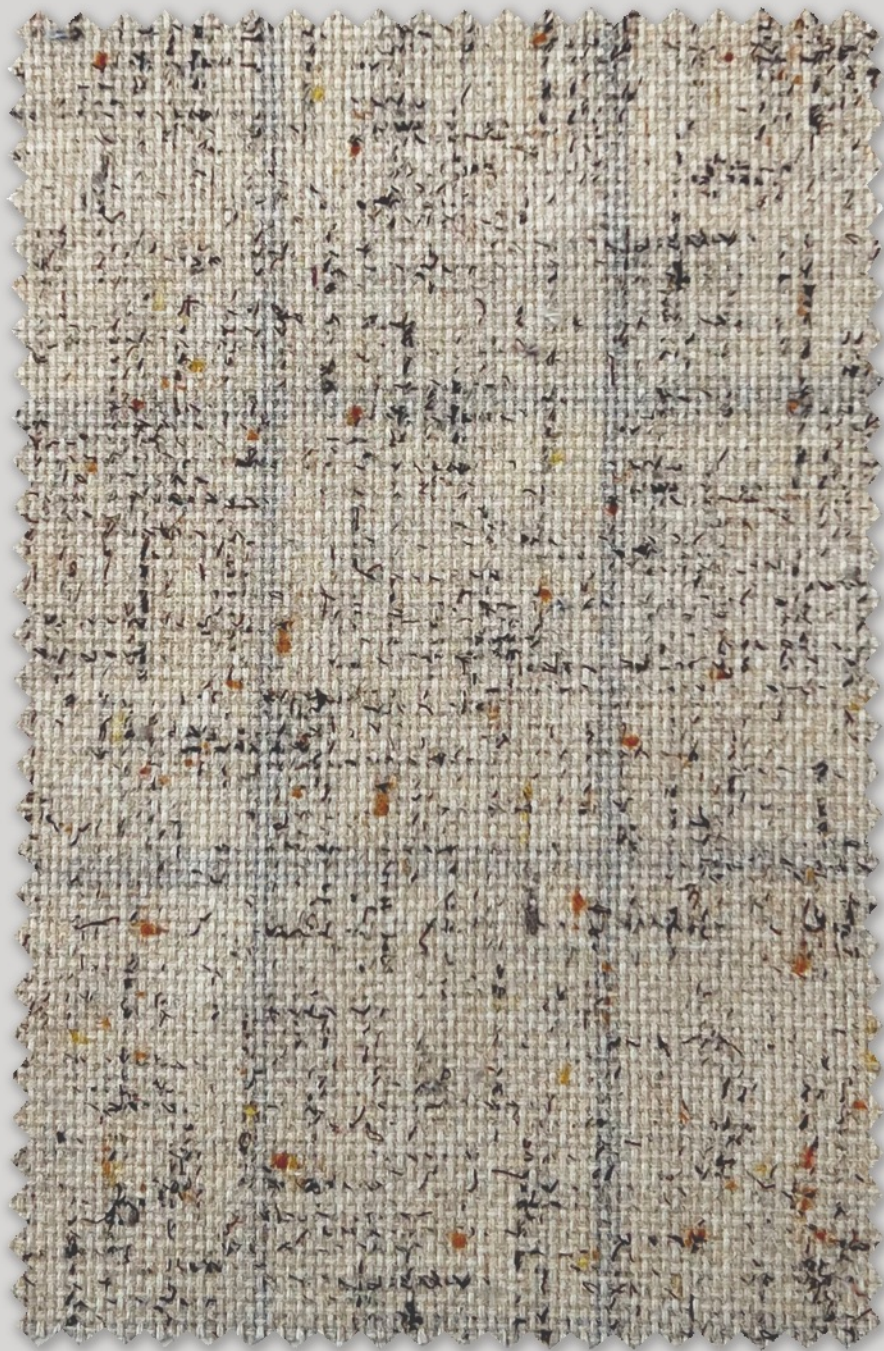


Soft Coats & Knits III

TRE2708

100% CO
250 g G



TRE2709

100% CO
250 g G



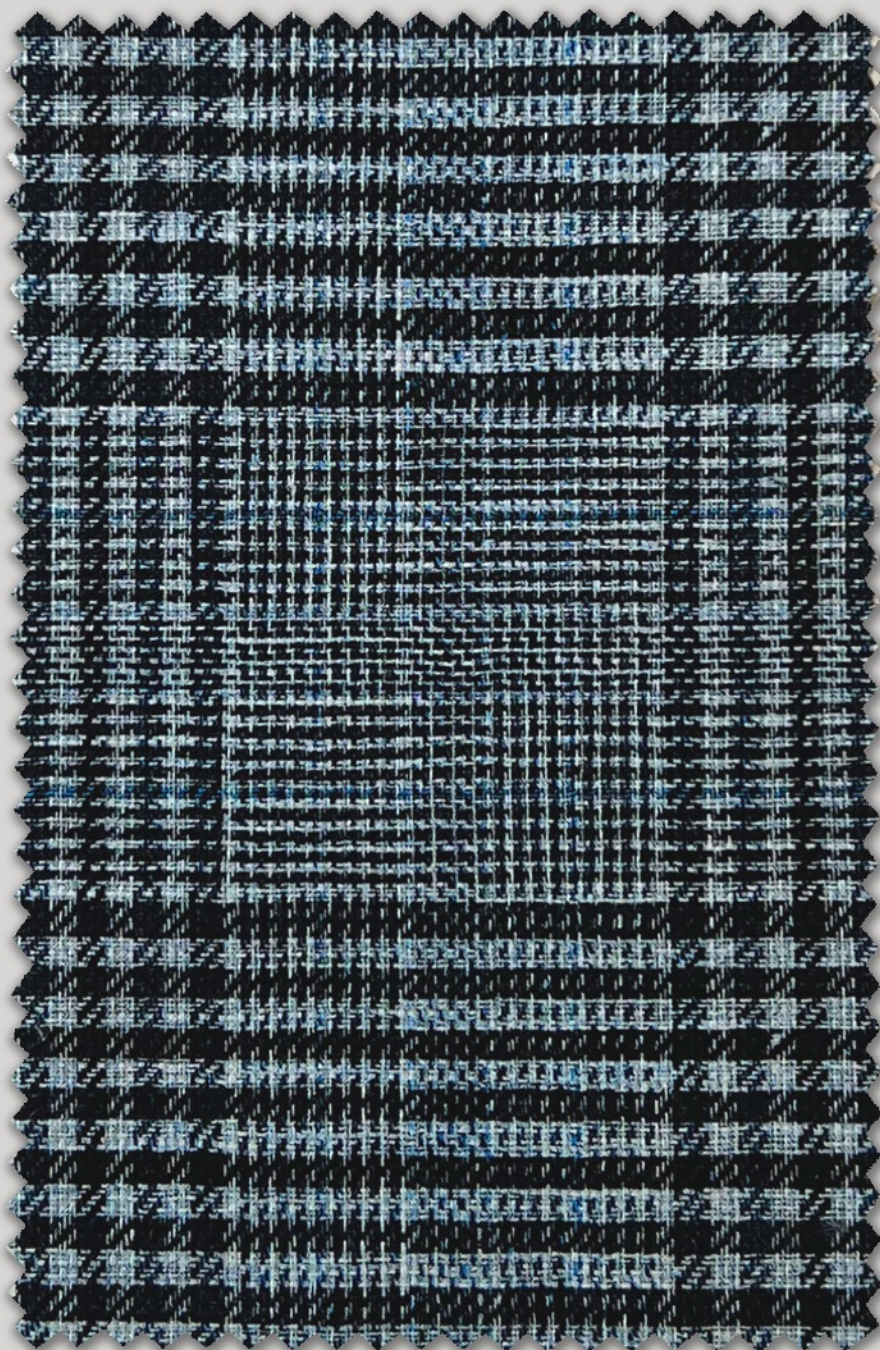
TRE2710

100% CO
250 g G



TRE2711

100% CO
250 g G



TRE2712

100% CO
250 g G



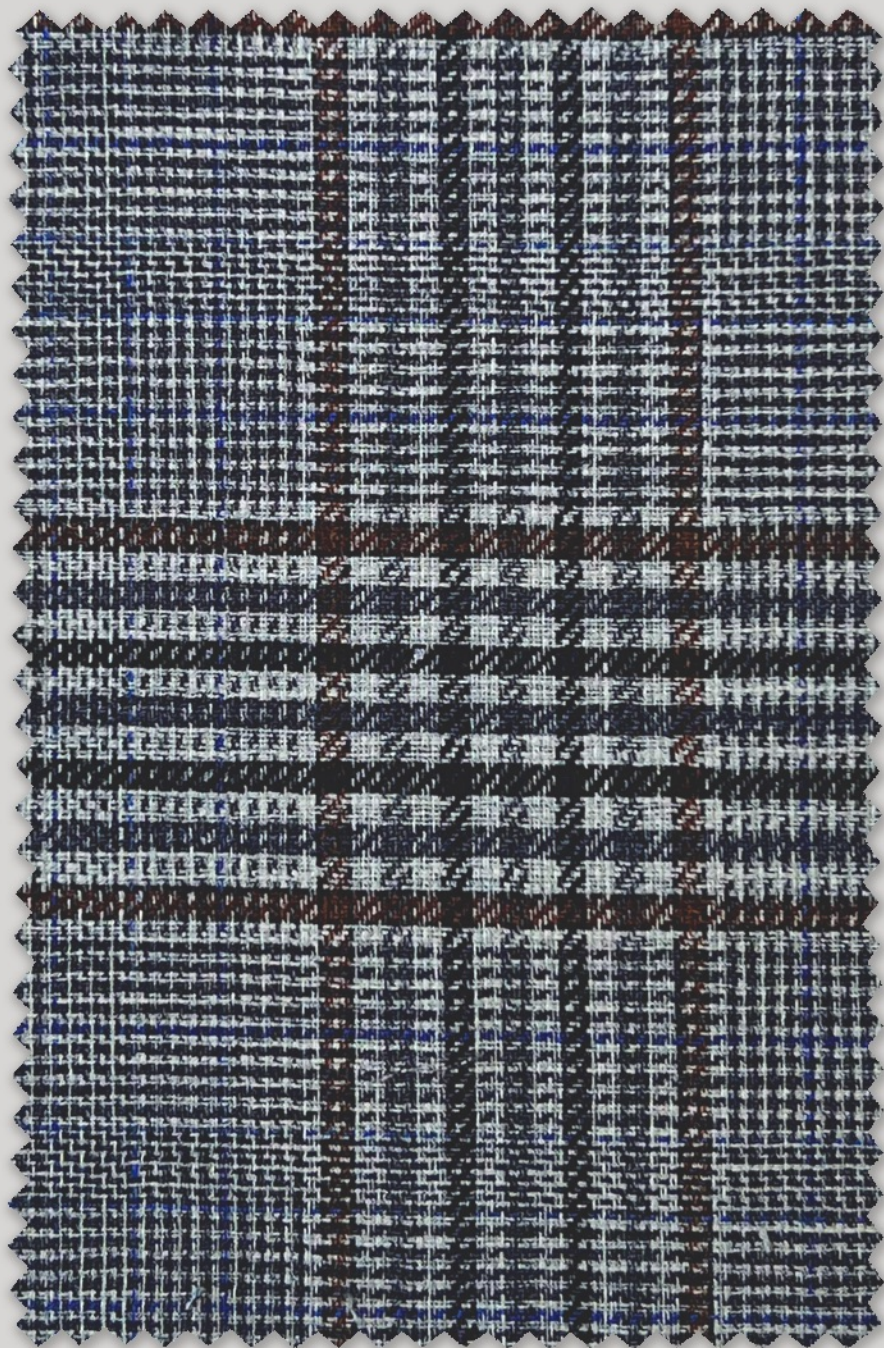
TRE2713

100% CO
250 g G



TRE2714

100% CO
250 g G



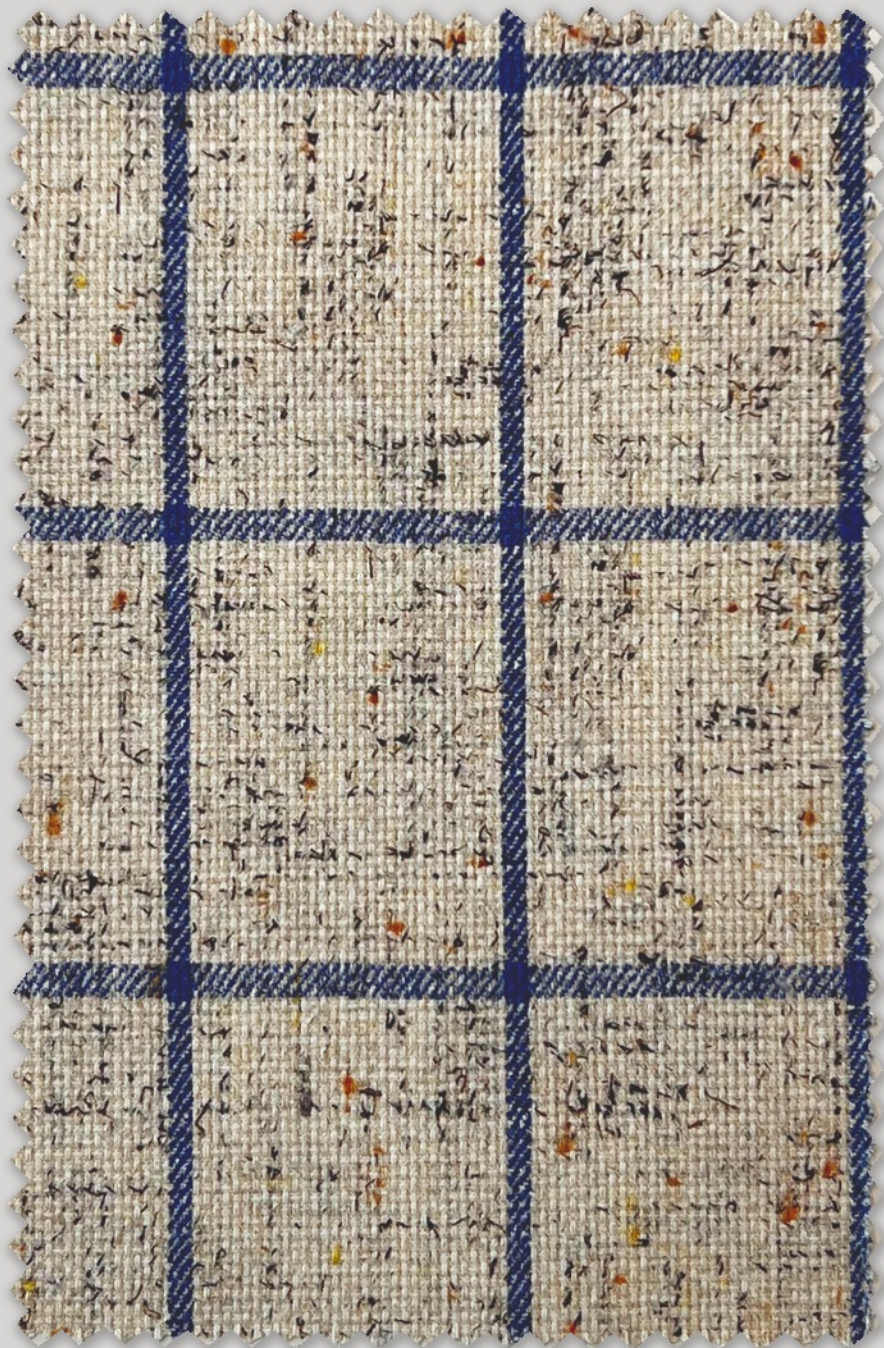
TRE2715

100% CO
250 g G



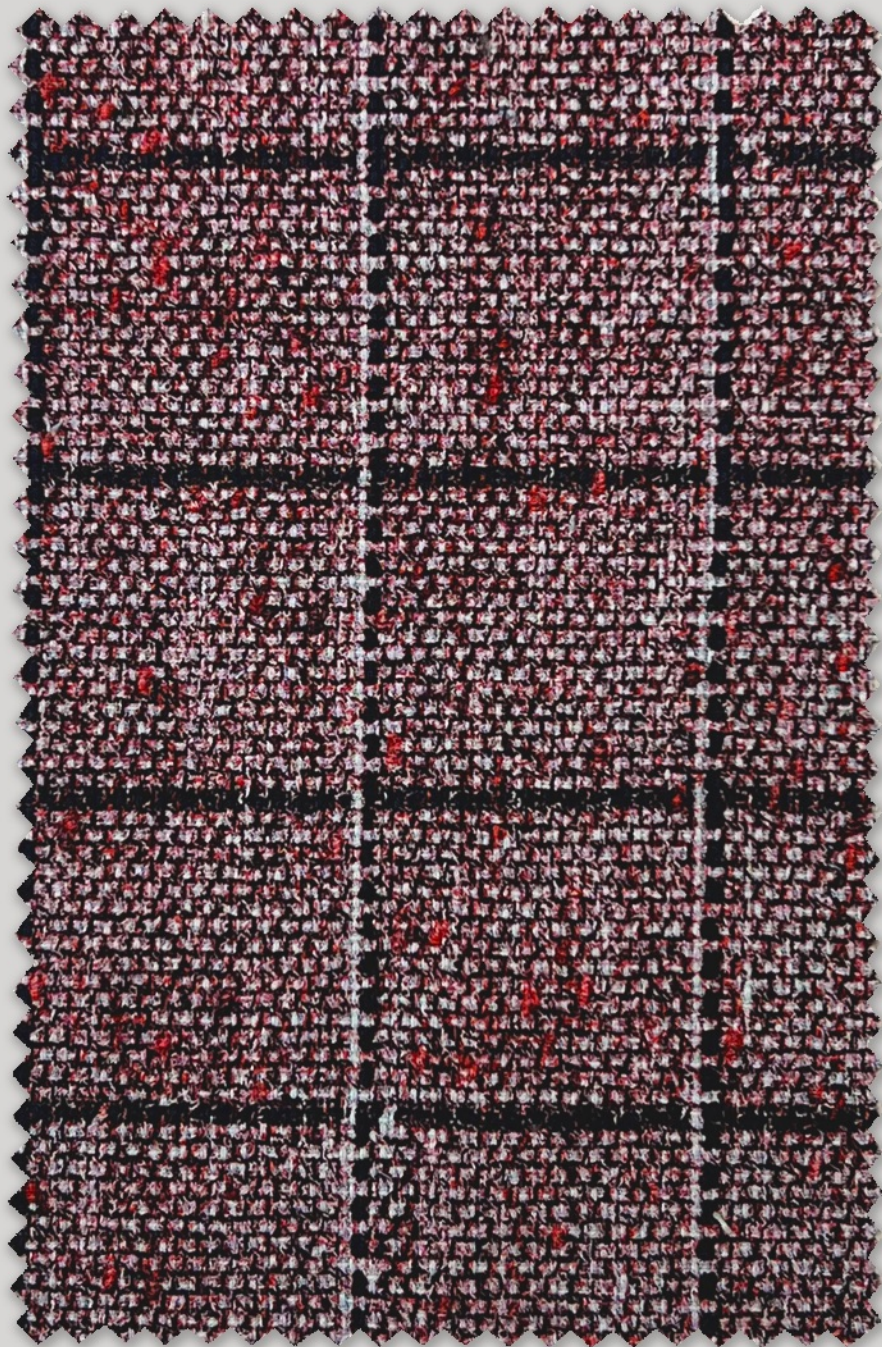
TRE2716

100% CO
250 g G



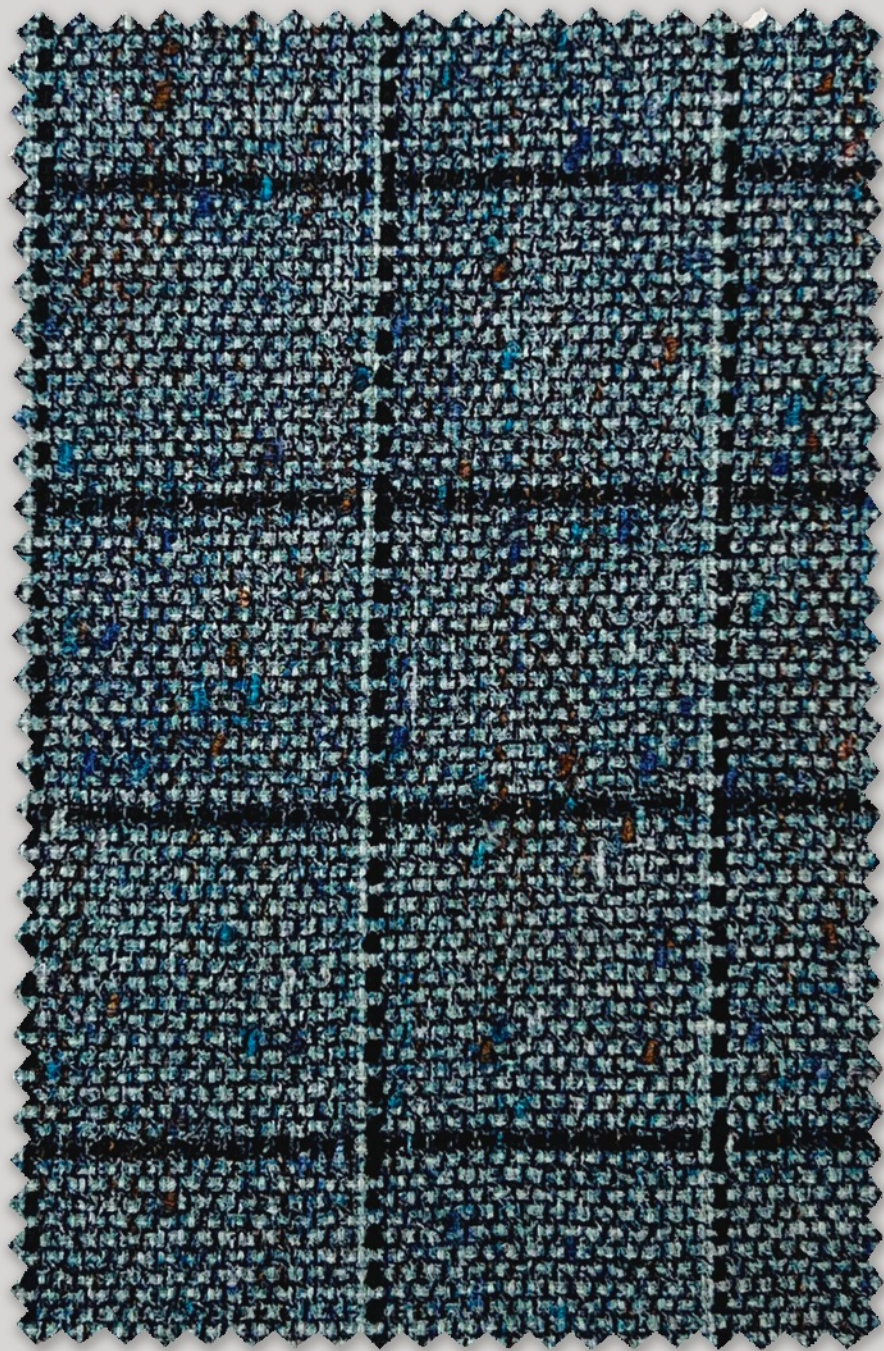
TRE2717

100% CO
250 g G



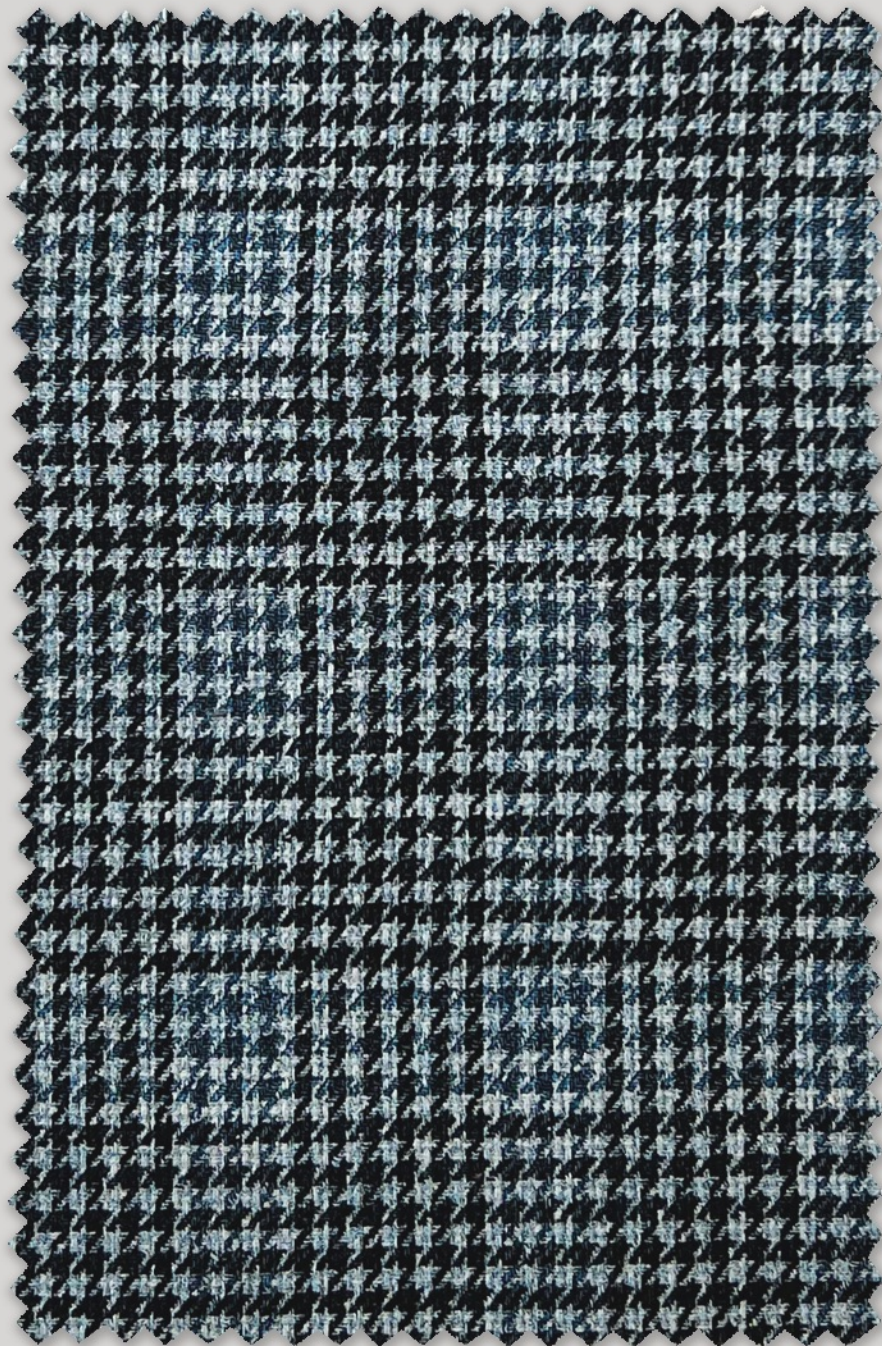
TRE2718

100% CO
250 g G



TRE2719

100% CO
250 g G



TRE2720

100% CO
250 g G



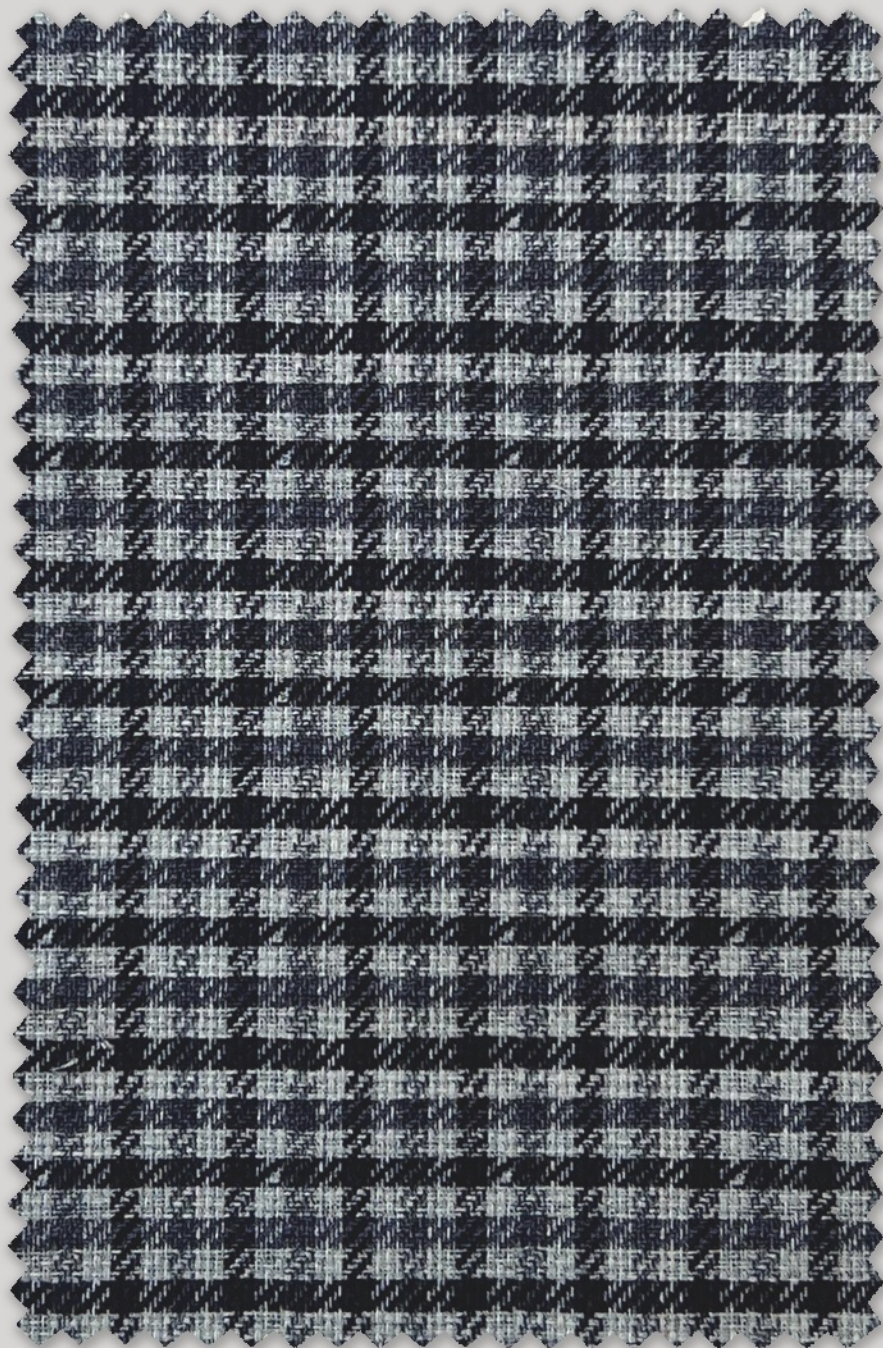
TRE2721

100% CO
250 g G



TRE2722

100% CO
250 g G



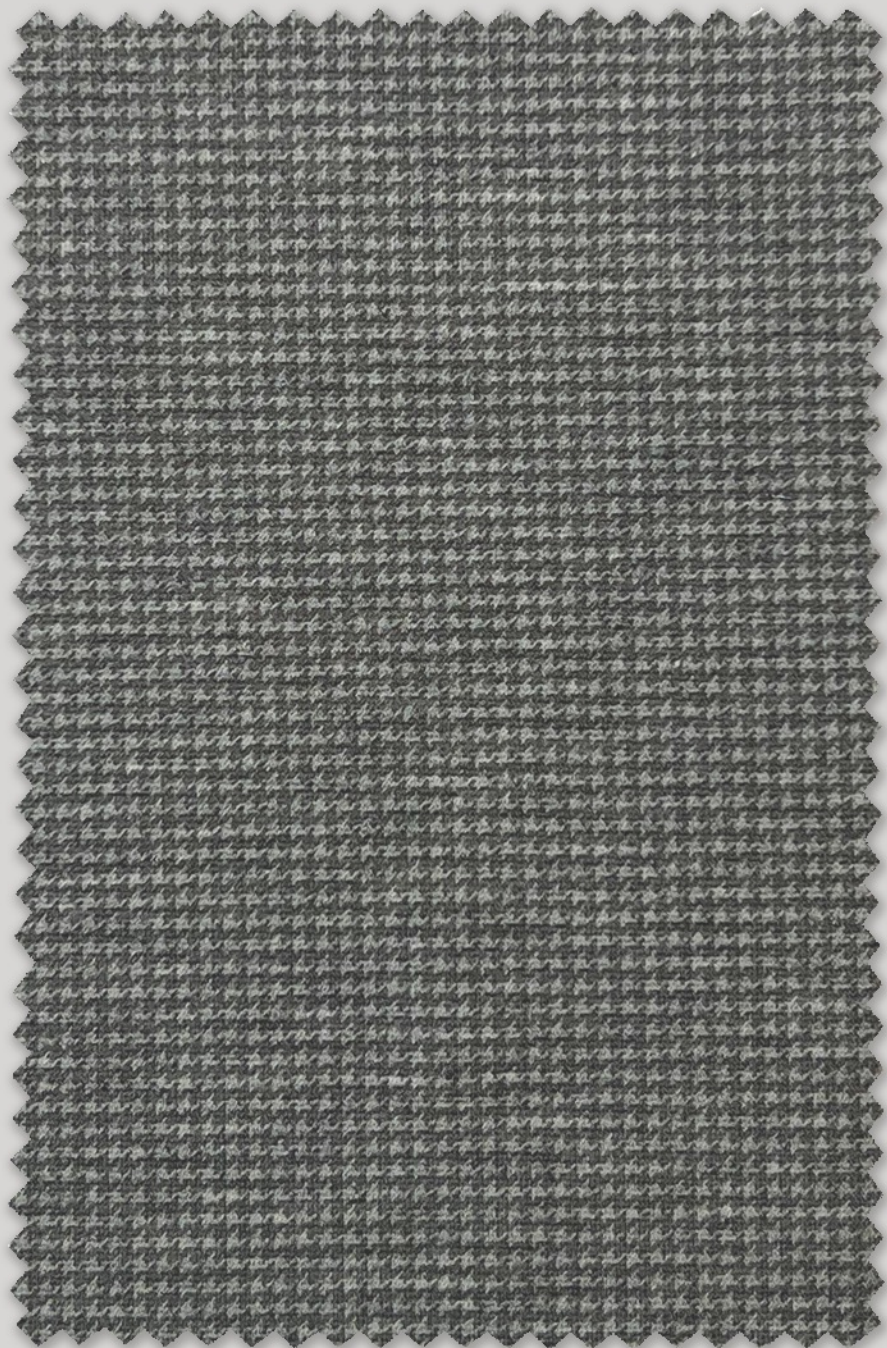
TRE2731

**100% CO
250 g G**



STCL2806*

CV 70% PA 27% EL 3%
518 g PM



STCL2807*

CV 70% PA 27% EL 3%
518 g PM



STCL2808*

CV 70% PA 27% EL 3%
518 g PM



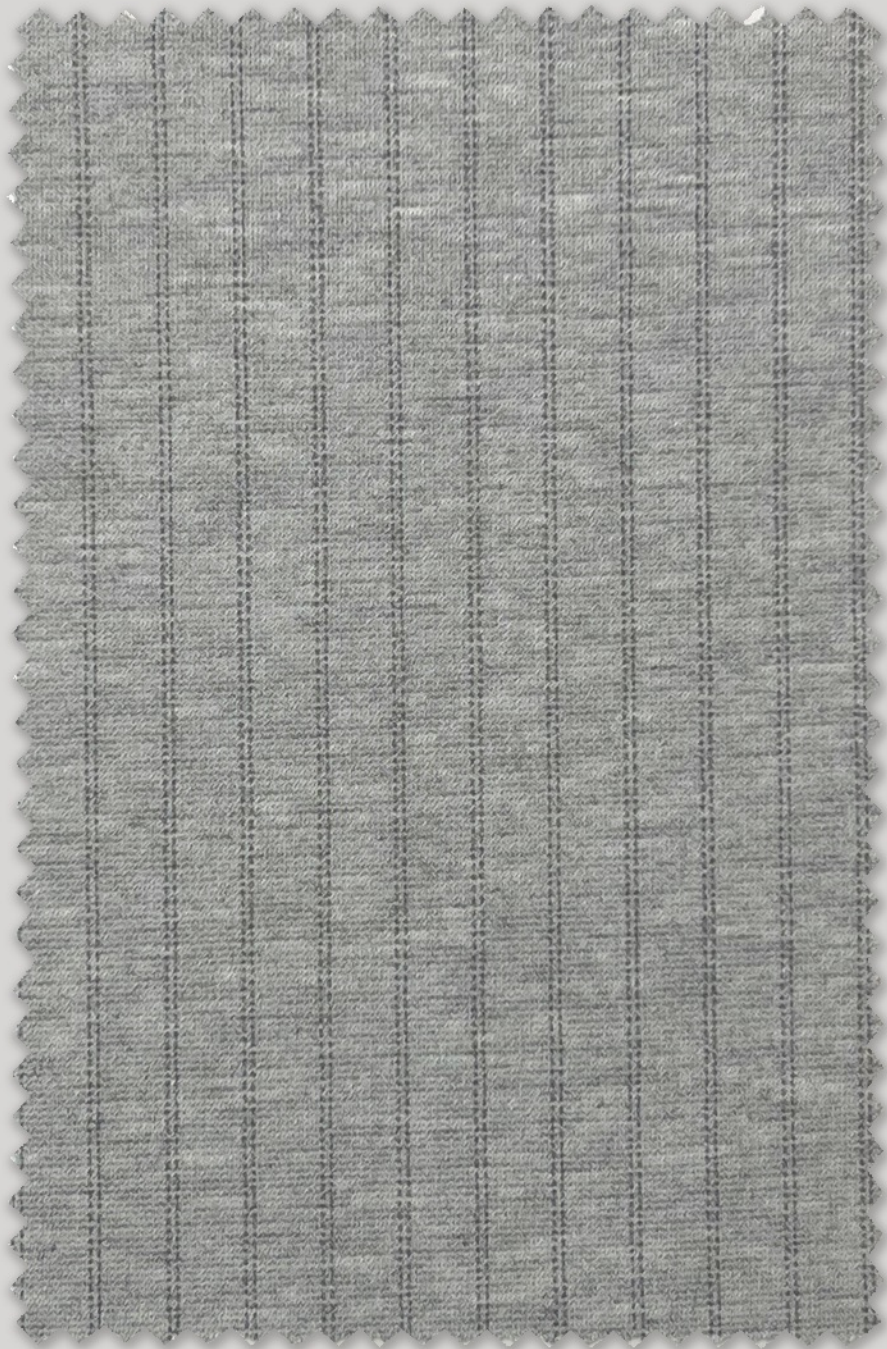
STCL2809*

CV 70% PA 27% EL 3%
518 g PM



STCL2810*

CV 70% PA 27% EL 3%
518 g PM



STCL2811*

CV 70% PA 27% EL 3%
518 g PM



STCL2812*

CV 70% PA 27% EL 3%
518 g PM



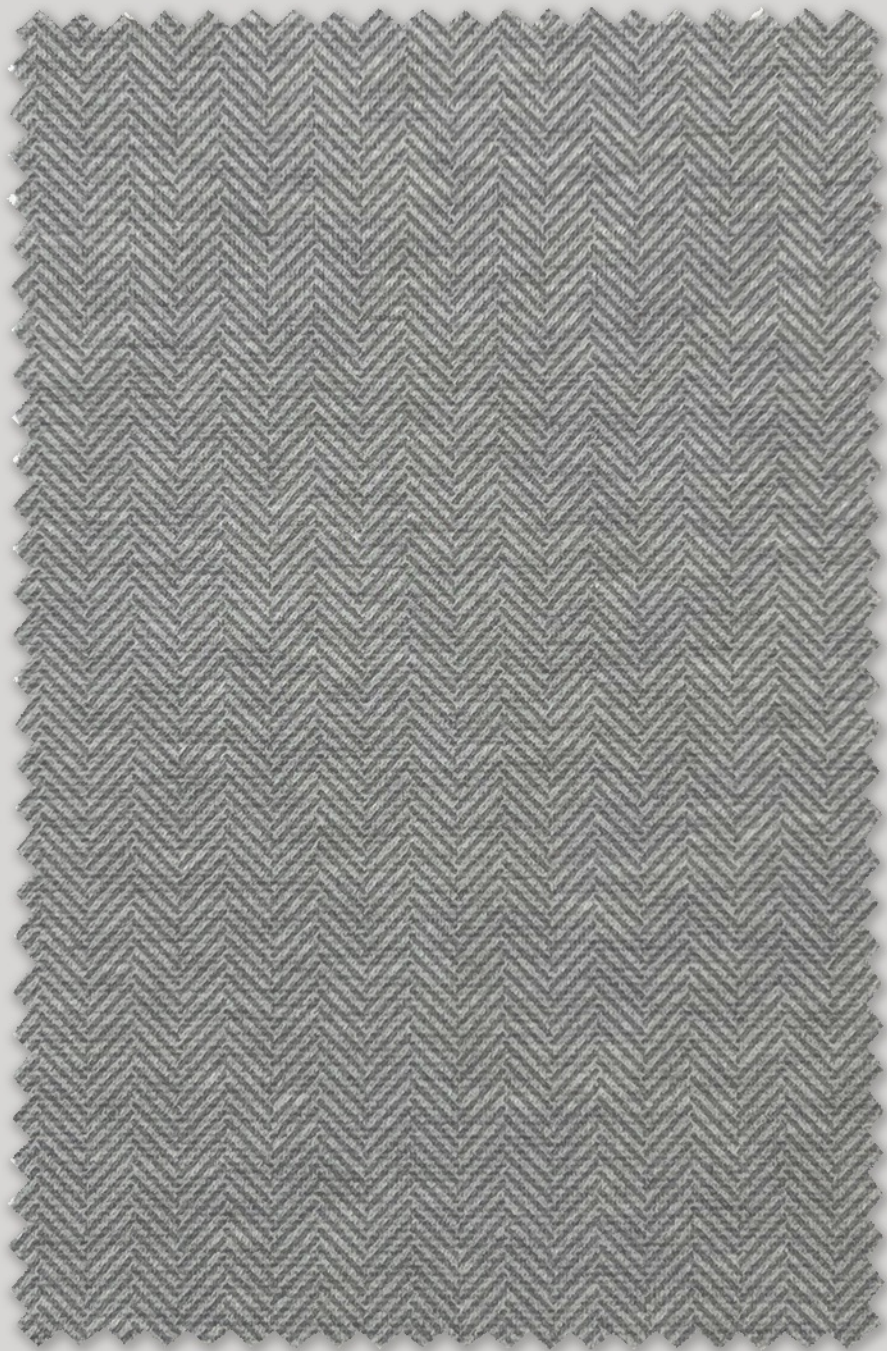
STCL2813*

CV 70% PA 27% EL 3%
518 g PM



STCL2814*

CV 70% PA 27% EL 3%
518 g PM



STCL2815*

CV 70% PA 27% EL 3%
518 g PM



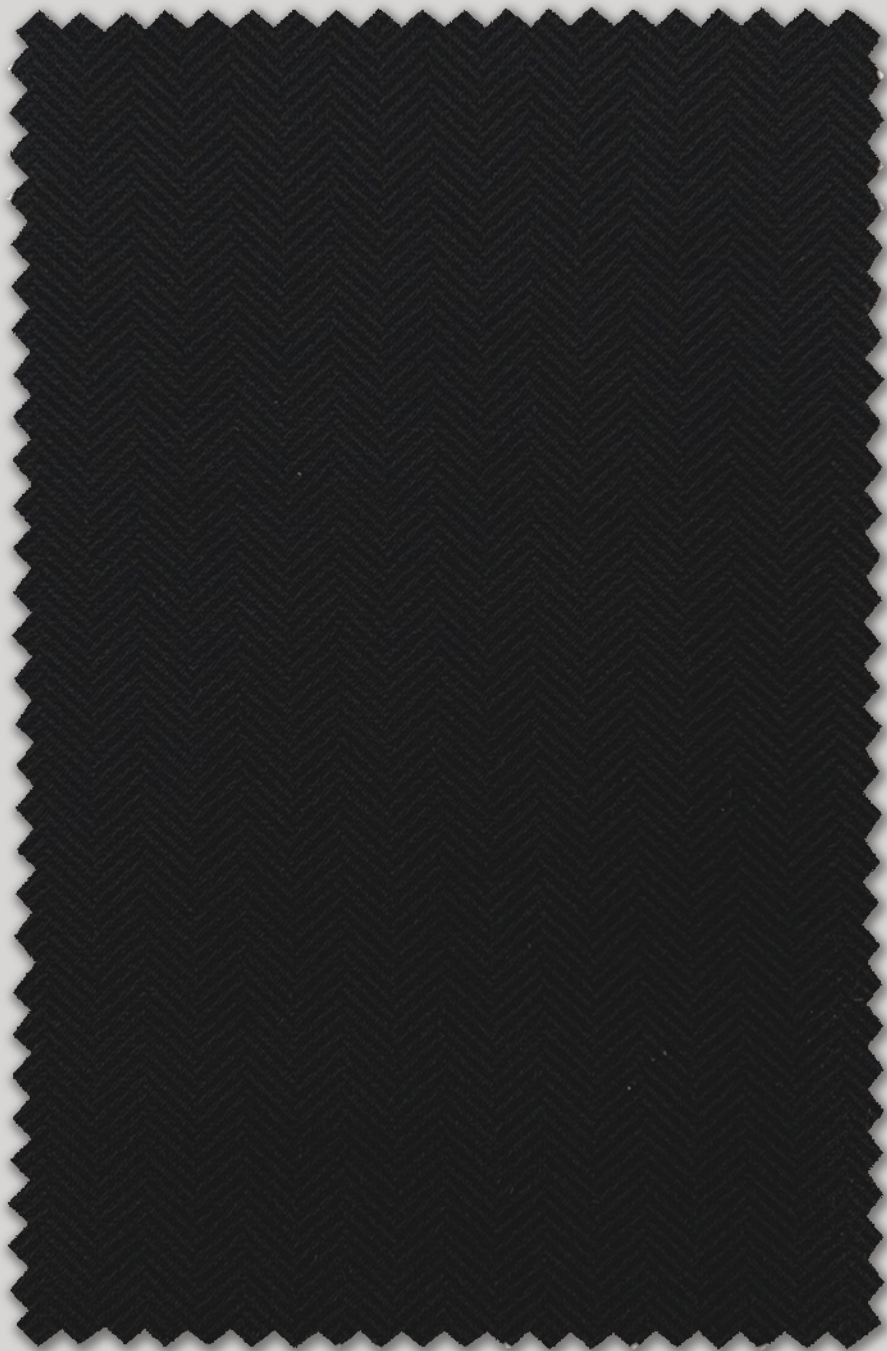
STCL2816*

CV 70% PA 27% EL 3%
518 g PM



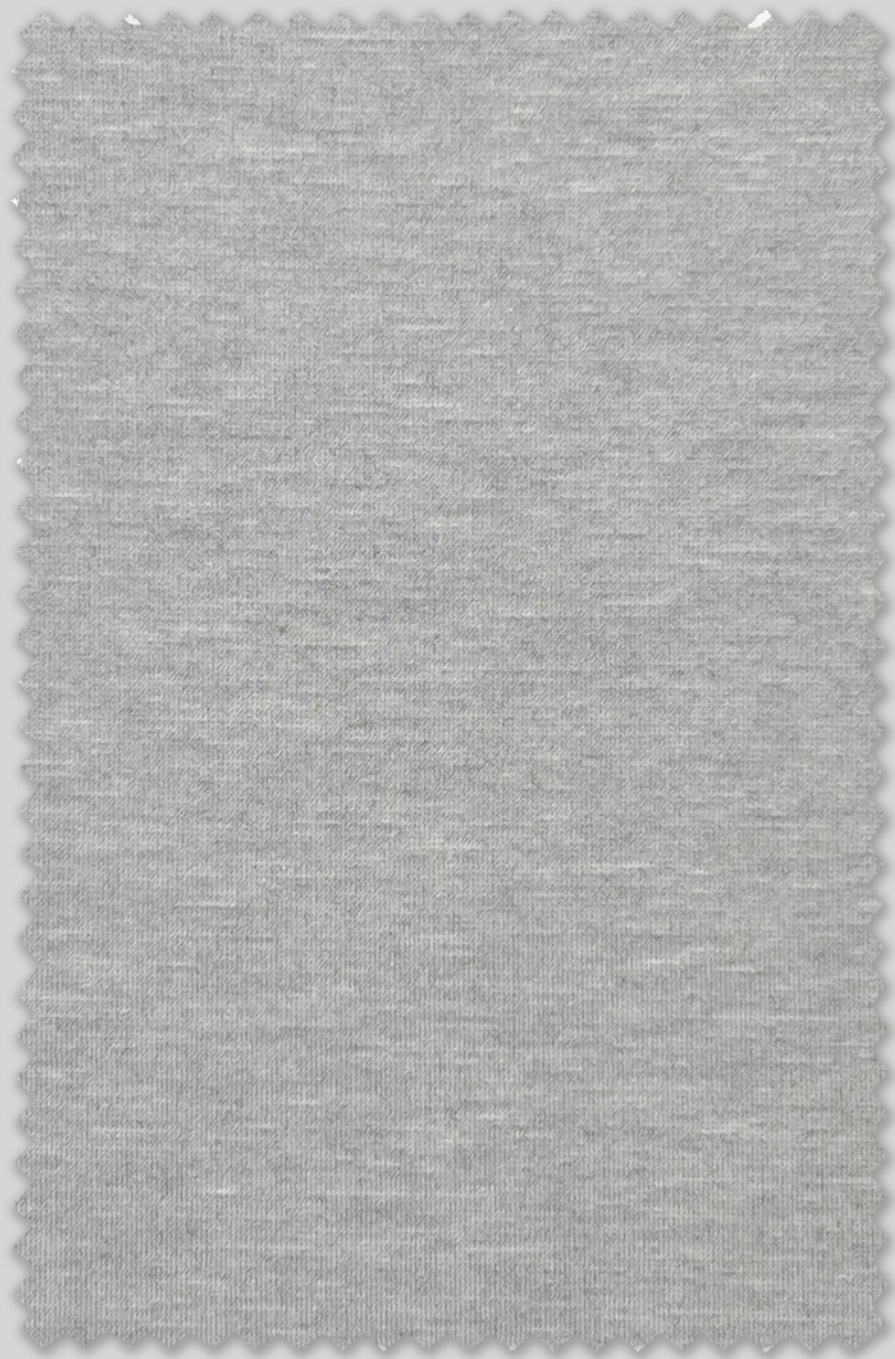
STCL2817*

CV 70% PA 27% EL 3%
518 g PM



STCL2818*

CV 70% PA 27% EL 3%
518 g PJ



STCL2819*

CV 70% PA 27% EL 3%
518 g PJ



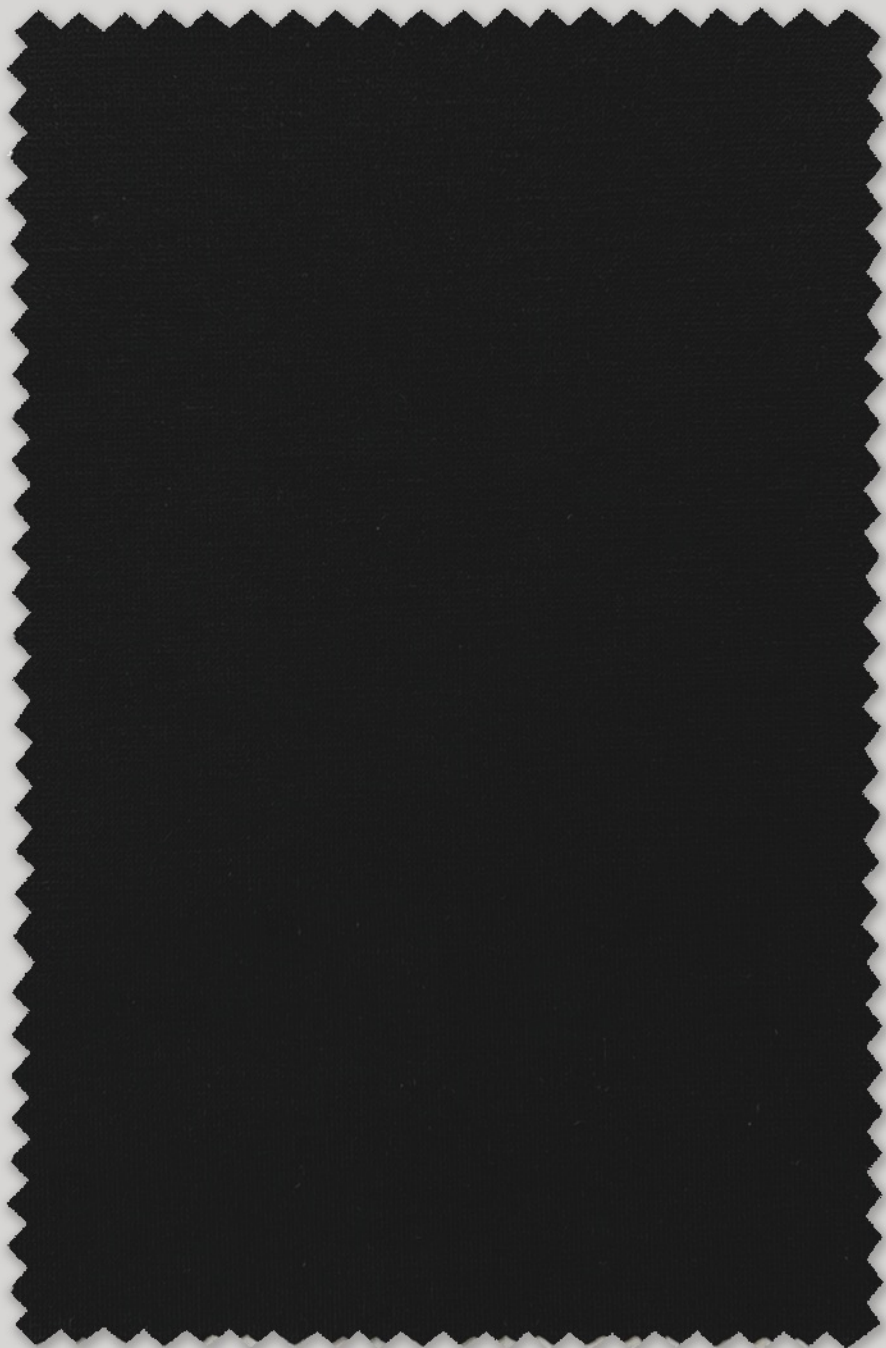
STCL2820*

CV 70% PA 27% EL 3%
518 g PJ



STCL2821*

CV 70% PA 27% EL 3%
518 g PJ



STCL2822*

CO 61% PES 34% EL 5%
420 g PM



STCL2823*

CO 61% PES 34% EL 5%
420 g PJ



STCL2824*

CO 61% PES 34% EL 5%
420 g PJ



STCL2825*

CO 61% PES 34% EL 5%
420 g PJ



CL220048

CLY 60% PES 35% EL 5%
165 g CLA7



CL220049

CLY 60% PES 35% EL 5%
165 g CLA7



CL220050

CLY 63% LI 11% PES 11% CV 11% EL 4%
250 g CLA8



CL220051

CLY 63% LI 11% PES 11% CV 11% EL 4%
250 g CLA8



CL220052

CLY 59% PES 11% EL 4%
180 g CLA7



CL220053

CLY 63% PES 32% EL 5%
170 g CLA7



CL220054

WV 60% LI 40%
270 g CLA8



CL220055

WV 60% LI 40%
270 g CLA8



CL220056

WV 60% LI 40%
270 g CLA8



CL220057

WV 60% LI 40%
270 g CLA8

