



micro.clock



User Manual  
v1.01a

Revision History:

v1.01a 12/14/18  
corrected an error in the MultiJack DIP switch section

v1.01 3/21/18  
corrected errors in setup menu description

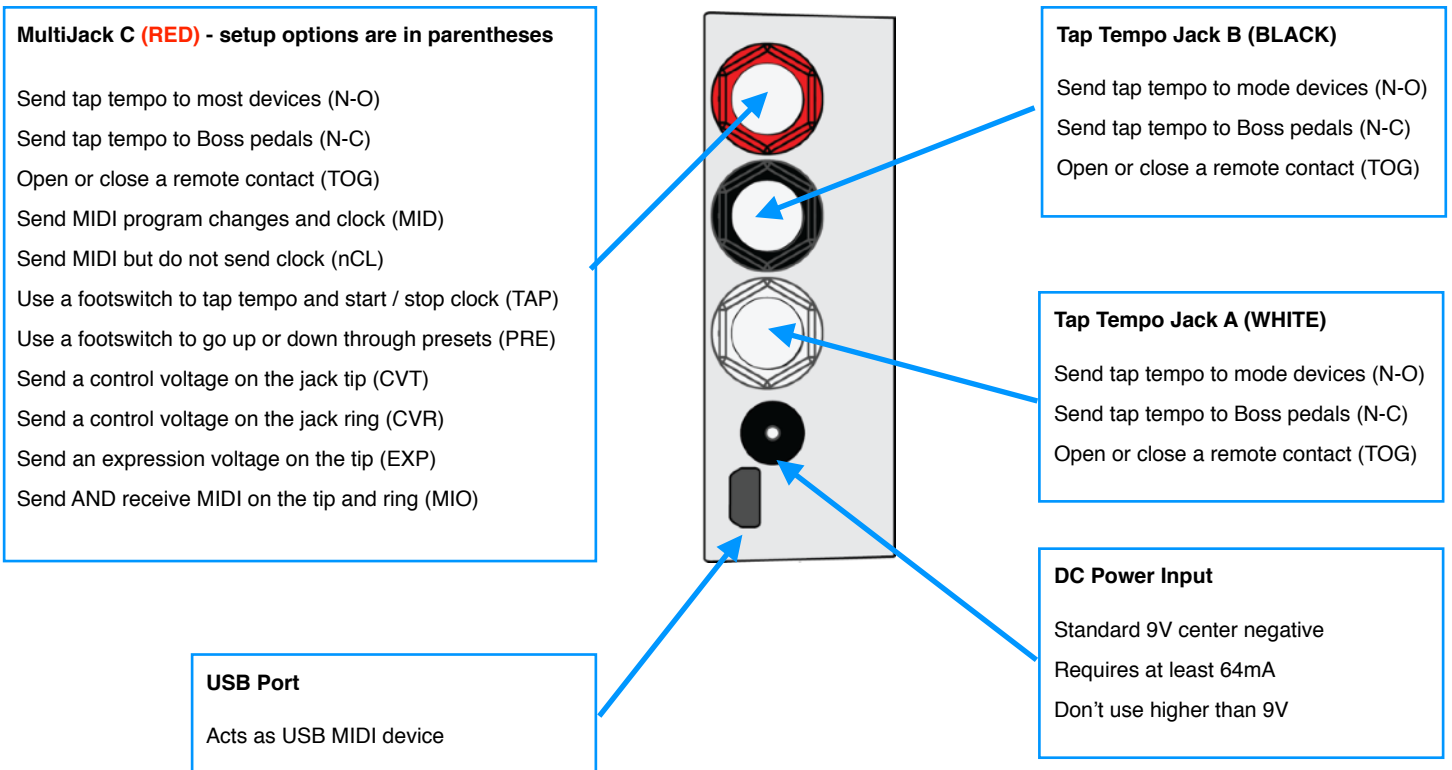
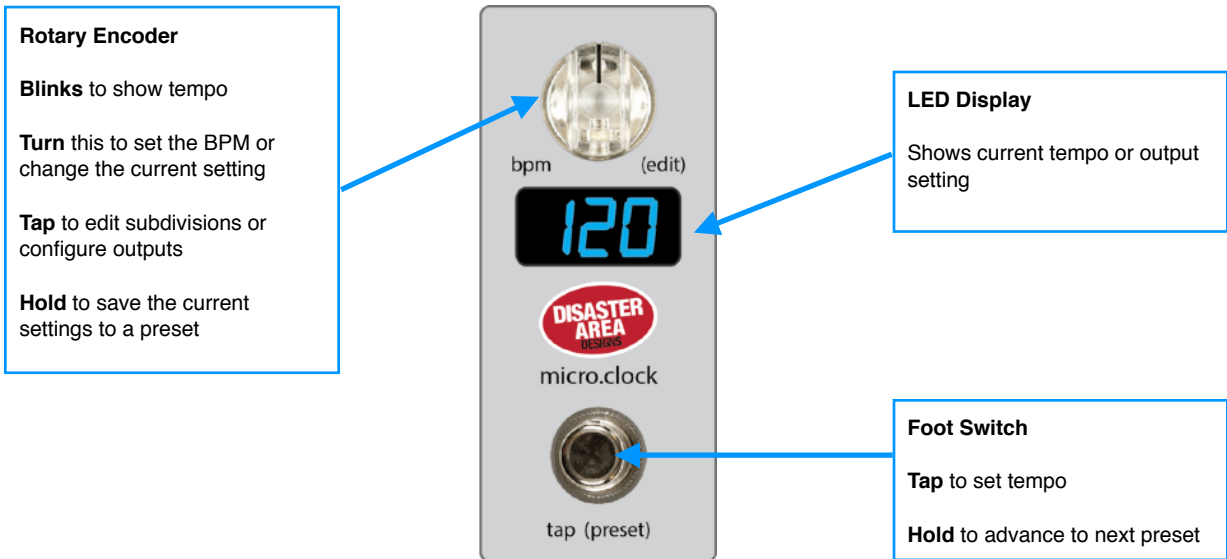
v1.00 11/30/17  
Initial Release

micro.clock User Manual

Thanks for purchasing a Disaster Area Designs micro.clock controller. The micro.clock is an ultra-compact pedalboard clock source and tap tempo controller, designed to help you synchronize the pedals in your rig.

At its heart, the micro.clock has a master clock that operates at any tempo from 30 to 300 beats per minute. The micro.clock will send out this clock source over MIDI, and will also generate tap tempo signals to interface with your non-MIDI pedals. The micro.clock is capable of controlling most pedals and rack units that have a tap tempo input jack.

Let's take a look at the micro.clock and see what it can do for your rig:



## SETTING THE TEMPO:

Operating the micro.clock is simple — tap its footswitch in time with your music to set the tempo of its master clock. Any connected MIDI clock compatible devices will automatically follow along at this tempo, and the micro.clock will generate a series of tap tempo pulses to control your other tap tempo pedals. The micro.clock counts taps in groups of two, so you must tap at least twice to set a new tempo.

To set the BPM without tapping, turn the clear knob on the micro.clock to specify the tempo in beats per minute. Once you have set the tempo, the micro.clock will automatically adjust its outputs to keep all of your devices in time.

## CHANGING SUBDIVISIONS

To change the tempo subdivisions for each output, tap the Edit Knob once to move through each output. When the desired output is displayed, turn the Edit Knob to select the subdivision. Available divisions are **Qu** - Quarter Note, **8d** - Dotted 8th, **8th** — 8th Note, or **Trp** - Triplet.

## SENDING MIDI PROGRAMS

If the micro.clock is set up to send MIDI using its MultiJack, then it can send out program change messages when a new preset is selected. The preset that is sent will always match the number of the micro.clock preset, from 0-99.

## SAVING AND LOADING PRESETS

To save the current settings to a preset, hold the Edit Knob down. The micro.clock settings will be saved to the current preset slot.

To move to the next preset, hold the footswitch down. The next preset will load, and the outputs will activate to send out taps to your devices.

To re-sync your devices without tapping in a new tempo, tap the footswitch ONCE and wait. After two seconds the micro.clock will send out new taps to your devices to re-synchronize them. This is useful if you have some devices which “drift” or change tempo gradually over time.

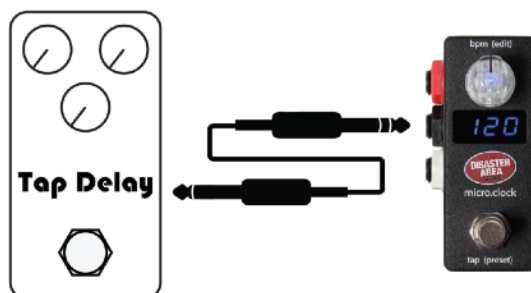
## TEMPO DISPLAY

The micro.clock displays the current tempo in Beats Per Minute. Not all devices determine their tempo in the same way, so sometimes you may experience differences between different pedals or devices - **don't worry!** The micro.clock is sending everything the exact same tempo, so even if their displays are off by a beat or two everything is okay.

## Connecting the micro.clock

There are several ways to connect your devices:

**Tap Tempo Outputs:** Connect your device's tap tempo input jack to one of the available tap tempo outputs on the micro.clock using a standard mono patch cable. All three outputs are configured to control *normally-open* tap tempo inputs, which is the most common type.

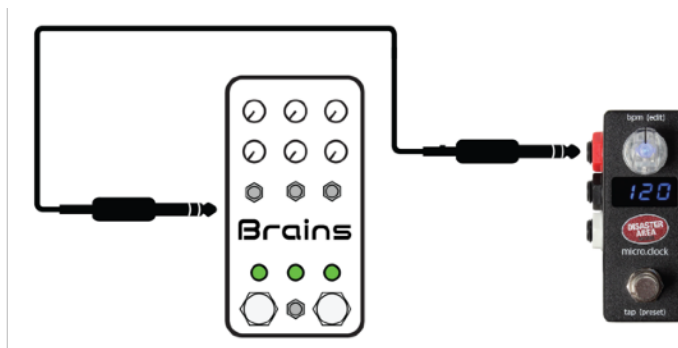


If you are sending taps to a Boss pedal, then you should configure its output to *normally-closed* using the Setup menu.

If you are sending taps to the *EXP* jack of a Strymon pedal, then you will need to use a TRS cable and set its output to *Pull-up* using the DIP switches inside the micro.clock.

If you are using a Strymon pedal that has been *modified* for tap by adding a jack (ex. El Capitan) then connect using a standard mono cable and set its output pull-up to OFF using the DIP switches inside the micro.clock.

**MIDI Output:** Some pedals feature a MIDI connection using a 1/4" jack, including devices from Chase Bliss Audio, Empress, Alexander, and Meris. The micro.clock can connect directly to these pedals using its red MultiJack. Open the micro.clock and set the DIP switches for the MultiJack to ON-ON-ON and then connect to your pedal using the correct type of cable. You will also need to set J C = *MID*, *nCL*, or *MIO* in the micro.clock Setup menu.



Use MID to send clock and program changes to Meris, Empress or Alexander pedals.

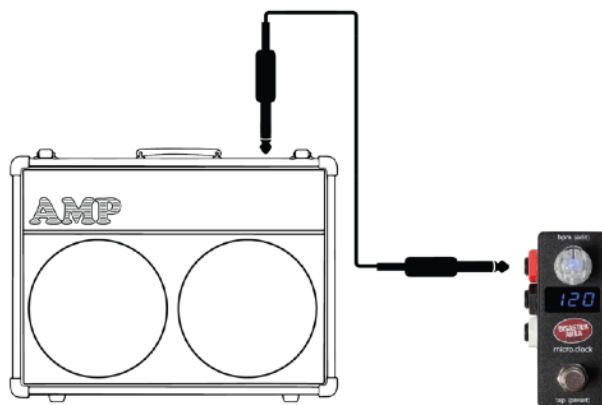
Use MIO to send clock and program changes to Chase Bliss pedals (be sure to use a TRS cable!)

Use nCL to send program changes only to Meris, Empress or Alexander pedals.

To connect to a pedal with a standard 5-pin MIDI jack, use the Disaster Area MJ-5P cable to adapt the MultiJack to 5-pin.

**Remote Switching:** So maybe you have an amplifier with channel switching? Or a pedal with a remote switch or "favorite" input? The micro.clock can handle that. Configure one or more of the micro.clock's outputs as *TOG* and then you can set your amp channels or favorite switch functions to change with your micro.clock presets! Connect to your amp or pedal using a mono cable.

If your amplifier uses a TRS / stereo jack for function switching then you can use the center (BLACK) output and a TRS cable to connect the A and B outputs to the same destination. The A output will control the RING and the B output will control the TIP of the cable.



If you're controlling a Strymon pedal, you'll need to set your output's DIP switch to enable the *pull-up* and to connect with a TRS cable.

## Setting Up the micro.clock

The micro.clock is set up from the factory to control 3 tap tempo devices with normally-open connections, and to access 12 presets.

To change the device settings, power the micro.clock off and back on, then hold the Edit Knob down when the display scrolls DISASTER AREA. The display should scroll SETUP, at which point it is safe to release the Edit Knob.

To navigate the Setup menu, rotate the Edit Knob to select the item to configure, then tap the Edit Knob to select. Turn the Edit Knob to change the item, then press the Edit Knob again to return to the menu. When you are done making changes, hold the Edit Knob to save your settings. The micro.clock will remember its settings when powered off. After you have saved your settings, power the micro.clock off and on again to fully load in the new configuration.

### Setup Menu Items:

- PST:** sets the maximum number of tempo presets the micro.clock can access, from 0 to 99.
- PCH:** sets the MIDI channel that the micro.clock will use to control an external MIDI device. OFF or 1-16.
- T A:** sets the configuration of tap output A. N-O (normally open), N-C (normally closed, for Boss devices, or TOG (remote switch)
- T B:** sets the configuration of tap output B. N-O (normally open), N-C (normally closed, for Boss devices, or TOG (remote switch)
- J C:** sets the configuration of MultiJack C. N-O, N-C, TOGG, MID output, nCL MIDI output without clock, TAP (tap footswitch), FPRE (preset footswitch), CVT (control voltage on tip), CVR (control voltage on ring).
- v LO:** Controls the tempo / time that corresponds to a 0.0V output from the MultiJack in CvR or CvT modes, from 0 to 2000 ms.
- v HI:** Controls the tempo / time that corresponds to a 3.3V output from the MultiJack in CvR or CvT modes, from 0 to 2000 ms.
- T DP:** sets the resolution of the BPM control using the Edit Knob. 1.0 adjusts by +/- 1 BPM, 0.5 adjusts by +/- 0.5 BPM.
- LEN:** sets the amount of time the tap outputs will stay active for each tap. Larger values correspond to longer times. Ranges from 0-6. Set this higher for devices like the Walrus ARP-87 or the Keeley Workstation series.
- BRT:** sets the brightness of the display and LEDs. Ranges from 0-9.
- LED:** sets the color of the tempo LED - RED, BLU, GRN, YEL, VIO, B-G, or WHT.
- CH:** sets the MIDI channel that the micro.clock will receive incoming messages. OFF disables the MIDI input, or 1-16.
- RST:** allows the user to factory-reset the controller. To use, tap the edit knob, then rotate the knob until CFG, PRST, or ALL is displayed. Tap the Edit Knob to reset the selected values.

## MultiJack Setup and DIP switches

The red jack of the micro.clock is our amazing MultiJack. This jacks are normally set up to function as tap tempo or remote switch outputs, but they may also be set up to work as footswitch inputs our MIDI outputs, to send control voltages and more.

**In order to configure these jacks, you will need to set them up in both the Setup Menu as well as setting the hardware DIP switches in the micro.clock.**

Task	Setup Mode (J C)	DIP Switches
<b>Send Tap Tempo</b>	N-O	OFF-OFF-OFF
<b>Send Tap Tempo to Boss</b>	N-C	OFF-OFF-OFF
<b>Control an amp or remote input</b>	TOG	OFF-OFF-OFF
<b>Send MIDI clock and programs</b>	MID	ON-ON-ON
<b>Send MIDI programs only</b>	NCL	ON-ON-ON
<b>Send MIDI clock and programs to Chase Bliss</b>	MIO	ON-ON-OFF
<b>Send and receive MIDI</b>	MIO	ON-ON-ON
<b>Send control voltage to jack TIP</b>	CvT	ON-OFF-ON
<b>Send control voltage to jack RING (Belle Epoch Deluxe)</b>	CvR	ON-ON-OFF
<b>Send expression voltage to jack tip (does not change with tempo)</b>	EXP	ON-OFF-ON
<b>Use a remote footswitch to tap tempo</b>	TAP	ON-OFF-ON
<b>Use a remote footswitch to change presets</b>	PRE	ON-OFF-ON

To configure the MultiJacks, launch the Setup Menu and navigate to J C. The following chart explains how to configure the setup mode options and the DIP switches in the pedal. Please note that these DIP switch settings only refer to the LEFT bank of DIP switches, as viewed from the inside of the pedal with the jack nuts facing up.

Pull-Up DIP Switch Settings:

Some pedals require an active voltage to be present on the tap tempo jack, such as the smaller Strymon pedals. In order to use these pedals, use the RIGHT bank of DIP switches to activate the pull-ups for the desired channel. Switch 1 controls the red MultiJack, switch 2 controls the black jack, and switch 3 controls the white jack.

If your pedal doesn't work as expected, check the DIP switches! Most pedals should have these set to OFF, but small Strymon pedals need them to be ON.

## MIDI Input and Output

While the micro.clock can generate MIDI clock and program change messages on its own, it can also function as part of a larger MIDI system thanks to its MIDI input and USB MIDI ports.

To use the micro.clock with a Disaster Area or other MIDI controller, change the **CH** setting in the Setup menu to match the channel that your master controller sends. If you are connecting to a Disaster Area controller, set **CH** = 16. We also recommend you disable the MIDI clock sending on your master controller, if possible. Disaster Area controllers should set CLK = OFF or TAP.

The micro.clock outputs MIDI from the red MultiJack. In order to use this jack for MIDI, set the left three DIP switches to ON-ON-ON inside the micro.clock, then choose the MIDI option you'd like to use from the micro.clock setup menu in the **J C** submenu.

**MID**: micro.clock outputs MIDI from the tip of the MultiJack.

**nCL**: micro.clock outputs MIDI from the tip of the MultiJack but no MIDI clock messages are sent, only MIDI program changes.

**MIO**: micro.clock outputs MIDI from the RING of the MultiJack, and accepts MIDI from the TIP of the MultiJack. This mode will allow you to connect a ring-active pedal such as a Chase Bliss Audio device with a simple TRS cable, or to connect to the MultiJack of a DPC-8EZ to send tempo and program changes on a single TRS cable.

If **CH** is set to **OFF**, the micro.clock MIDI thru will be disabled.

The micro.clock responds to the following MIDI messages:

Program Change 0-127:	Change preset 0-127
Continuous Controller 93:	Tap Tempo
MIDI Beat Clock:	No action
MIDI Stop:	No action
MIDI Continue:	No action

## External MIDI Clock

The micro.clock cannot receive external MIDI clock. Please consider using the Disaster Area Designs SMARTClock if you need to receive MIDI clock from your devices.