

DES 2005

DES 2005



# IDES OF MARCH

The 6th biennial  
building-wide exhibition

March 14th - April 4th 2008

**Abc No Rio**  
156 Rivington St. NYC

3 in an edition  
organizers

The 6th Biannual Ides of March in 2008 also marks the 30th anniversary of Collaborative Projects ("Colab"). The objective of Colab was to "function as a group of artists with complementary resources and skills providing a solid ground for collaborative work directed to the needs of the community-at-large." The founding elements of Colab are the resonant theme of this year's group exhibition: the process of collaboration among existing collectives and artist groups.

Today, individual aesthetic is the most common practice known for artistic contribution and appreciation. However, it is important to note that collaboration among artists existed as early as the 17th century. Although it is not new, the attention on artistic collaboration is becoming more conspicuous. Furthermore, it contributes a profound effect on new practices in art making. Technological advances and use of image editing software, e-mail, photo and video sharing websites, and live video feeds elevate the rise in cross-border virtual communities where collaborations become more accessible, transparent, efficient, and familiar.

Challenges are considerably intensified when working with multiple individuals as opposed to working on one's own. While this process can be ridden with ego, criticism, and undefined boundaries, the reward is great - a tangible piece of creative realization begot through vision coalescence and beneficial compromise. Upon execution, a collaborative piece achieves a radical status when it fluidly sustains the integrity of each artist's perspective and visual language. The outcome is less predictable but nevertheless more anticipated by both creator and audience.

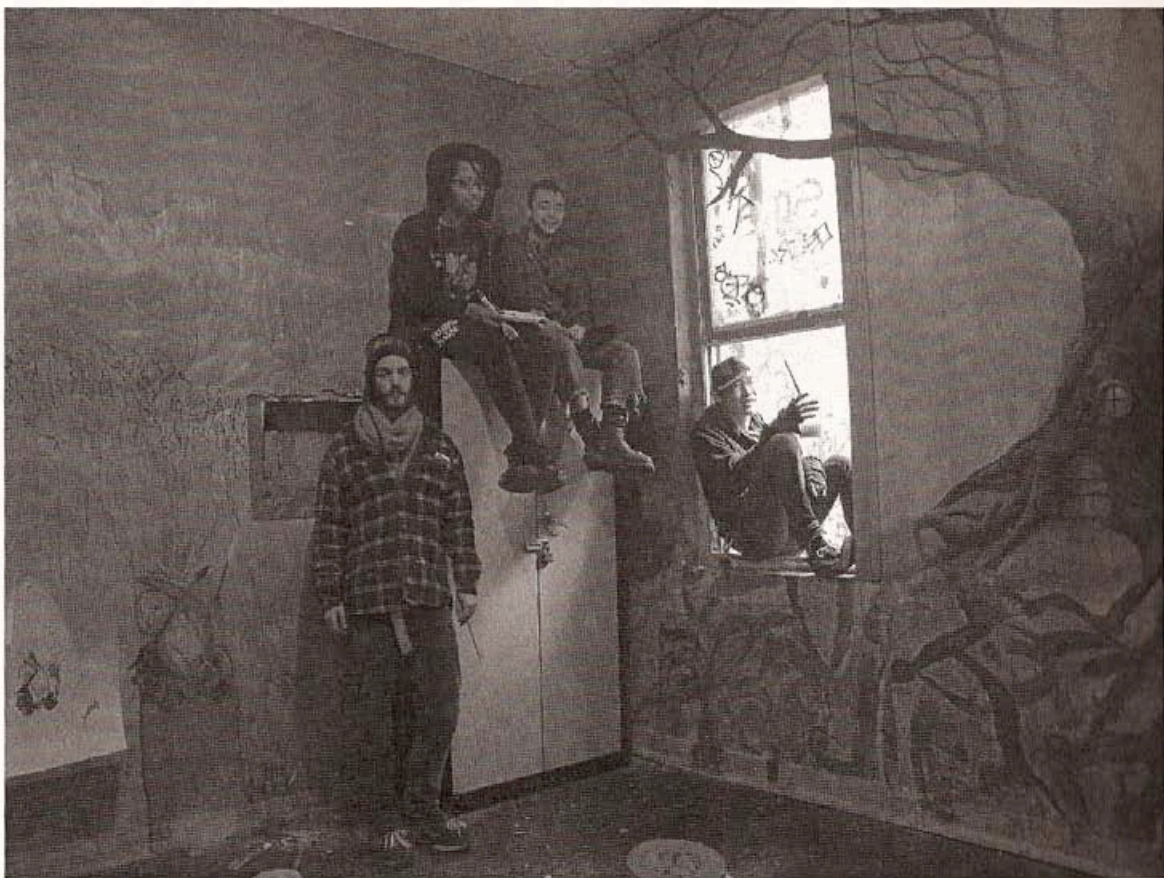
Ides of March 2008 has over 30 projects with reverberating themes that include the impact of the real estate industry on an art community; immigration and the de-objectification of people; ecological and biological sustainability; global transfer of experience and knowledge; and doomsday destruction in terms of war, patriotism, community mobilization and escapism. The hope is to cultivate the consciousness of our current political, economic, and social state and to inspire future artistic mobilization and participatory autonomy.

Joyce Manalo

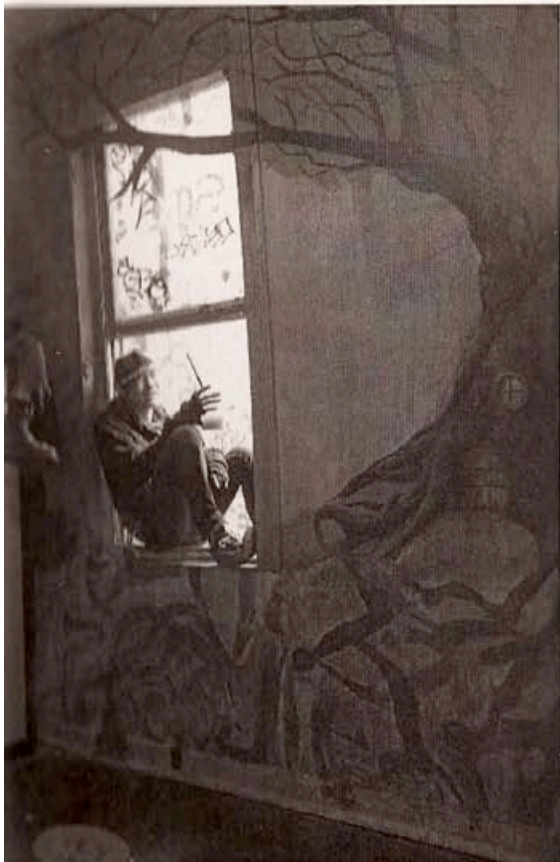
Ides of March 2008 Curatorial Committee



it/EQ Community Arts Collaborative



*Giving Tree* is a mural project that explores the relationships between people and giving, communal space and sharing, relationships to nature and giving.



*Giving Tree* is a mural project that explores the relationships between people and giving, communal space and sharing, relationships to nature and giving

