

March 22, 2021

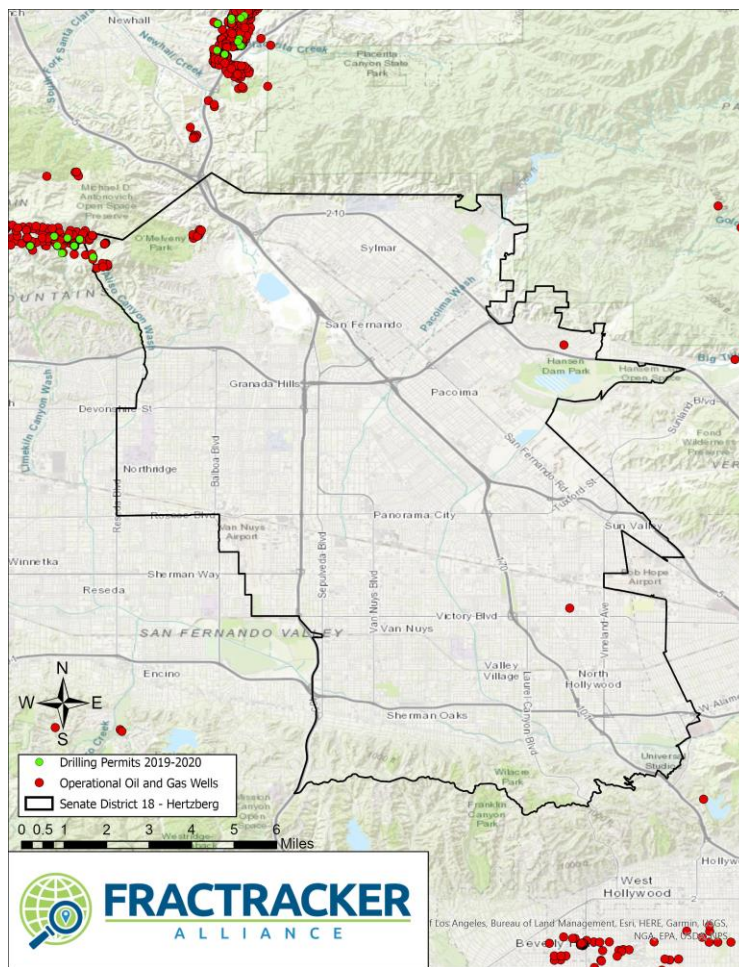


FRACTRACKER

ALLIANCE

CA State Senate District 18

There are 53 operational wells located within District 18, and 10 are listed as 'idle'. A total of 26 of those operational wells are located within 2,500' of a home, school, or healthcare facility. Over the course of 2019 and 2020 CalGEM approved one rework permit in the district. These wells present a public health threat to communities.



Kyle Ferrar, MPH
Western Program Coordinator
FracTracker Alliance
Ferrar@FracTracker.org
(415)890-3722