

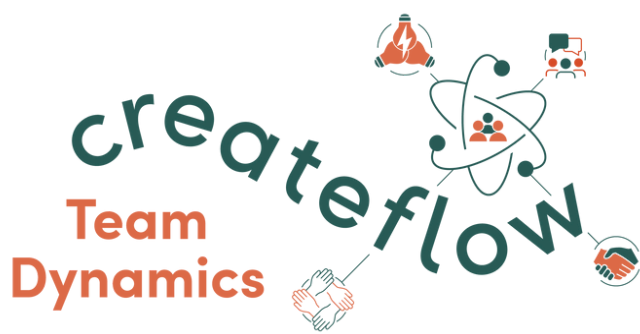
# CREATE FLOW

## BUSINESS & TEAM AWAY DAYS 2024



createflow

WE ARE CREATE FLOW, A PEOPLE, LEADERSHIP  
& CULTURE CONSULTANCY DRIVEN BY  
POSITIVE IMPACT



## WHO ARE CREATE FLOW?

Create Flow was established in 2021 by Gary, Jill, and Beth as a small People and Culture Consultancy with the purpose of creating Positive Impact. We are a small consultancy with big ambitions. We create positive impact, ensuring that you can continue to grow your business by investing in your people and culture.

With a wealth of experience in consultancy and helping organisations, teams, and people thrive, Create Flow recognises that the current and emerging business landscape requires a fresh and highly human approach to consultancy—one where partnerships, aligned values, and trust are at the heart of how we work together.

We are proud to model how business can be a force for good by donating 3% of our income from all consultancy projects to our charity partner, [Practical Action](#).

Our values and principles are lived and breathed in our people and in our work. As psychologists, behavioural change specialists, and development experts, we measure progress and impact. We bring cutting-edge, evidence-based methods, techniques, and approaches that ensure a dynamic shift, embracing current reality and connecting to future potential.

*"We had a great experience with Create Flow, the staff were very engaging and delivered a fun and educational event. I would highly recommend if you're looking for ideas for away days, with a educational and business minded approach."*

# Practical ACTION



## WHY AWAY DAYS?

As Mckinsey research shows, people are hungry for social cohesion, purpose and trust in their work and from their organisations. They want to feel valued and to work in a truly collaborative way.

Having the opportunity to grow and connect their purpose to that of their organisation. When organisations make space for their people to connect on these vital areas of the employee experience they reap many rewards, such as:

- Improved team collaboration and communication
- Increased morale and motivation
- Increased creativity and innovation
- Positive impact on wellbeing

Away days provide the perfect opportunity to enhance the employee experience and revitalise people and teams in these challenging times.



## WHY CREATE FLOW AWAY DAYS?

- Engaging and creative (not all Power Point or all day talks)
- Backed by theory and research
- Impactful and drives action
- Fantastic venues with indoor and outdoor space to choose from or at your location
- Facilitated by experienced business psychologists and team coaches
- Energising and positive
- Positive impact – charity donation



## INVITATION

Book a call with Jill or Gary to talk about what you are looking to achieve from bringing people together in your organisation. We design bespoke events that achieve your aims and ensure a positive impact for everyone involved and our charity partner too.

*“Gary, Jill and Mark we excellent hosts at our recent company 'away day' they are creative and kept us engaged all day - thank you!”*



FOR FURTHER ENQUIRIES, OR TO ARRANGE A FREE  
CONVERSATION ABOUT YOUR AWAY DAY NEEDS, BOOK  
AN APPOINTMENT HERE



createflow

**Gary King**

Director & Co-Founder

m. 07977 920874

[gary@wearecreateflow.com](mailto:gary@wearecreateflow.com)

**Jill Chapman**

Director & Co-Founder

m. 07810 828173

[jill@wearecreateflow.com](mailto:jill@wearecreateflow.com)

[wearecreateflow.com](https://wearecreateflow.com)

**Create Flow Limited.**

Second Floor, 2 Walsworth Road, Hitchin, Hertfordshire, England SG4 9SP

Company no. 1306845 | VAT no. 429 8925 44 | ICO no. ZA847823