

Oaks and Olives

Wineries

The attached list is a guideline only to wineries that are to the most part accessible by day trips from our home. We have visited many of these with the rest of the list derived from wine publications in Vancouver, Provence and on the international scale. The wineries either represent very high overall ratings based on tasting notes, interesting experiences and great ambience or just quirky producers producing quality wine. Some wines are very expensive and meant to be put away for that special occasion but most are approachable and should be consumed as soon as you get back to the house at least that is the idea and fun of it.



Enjoy and remember do not drink and drive.

Pic Saint Loup Wineries

Chateau de Valflaunes

Rue de L'ancien Lavoir

34270 Valflaunes

- Original tasting room beside La Belle Vigne restaurant in Pic Saint Loup
- La Belle Vigne has a cave au vins attached and represents most local wineries, owner very knowledgeable
- Rose a must and try T'em T'em
- See attached description

Chateau de Lancyre

34270 Valflaunès

- Vieilles Vignes receives consistent high ratings
- Black raspberry, orange peel, tobacco, licorice, pepper, coffee
- Available in Vancouver

Mas Bruguiere

La Plaine

34270 Valflaunès

Domaine De L'Hortus

34270 Valflaunès

Languedoc Roussillon west of Pic Saint Loup Wineries

La Peira

34725 Saint-Andre-de-Sangonis

- Highly recommended to try, numerous wine advocate ratings
- 2013 excellent vintage
- Terrasses du Larzac, Grenache – Syrah – Mourvedre - Cinsault

Mas de Daumus Gassac

Haute Vallee Du Gassac

34150 Aniane

- Non appellation wines, well known as cutting edge experimenting with different varieties, see attached description
- Gerard Depardieu (actor) bought several acres outside Aniane (close to Daumas Gassac) to produce high end garage style wine, Depardieu wines not well received as overpriced with little attention to terroir

Domaine de la Grange des Pères

34150 Aniane

Mas de la Seranne

Route de Puechabon

34150 Aniane

- See attached description

Domaine Saint Sylvestre

Rue de la Grotte

34150 Puechabon

Languedoc Roussillon west of Beziers Wineries**Domaine Leon Barral**

Lenthéric

34480 Cabrerolles

- Carrignan, Grenache, Cinsault
- Biodynamic wine
- Unique and expressive
- Tradition – ripe red fruit, cranberry, mineral freshness, spicy after taste

Chateau de Caraguilhes

11220 Saint-Laurent-de-la-Cabrerisse

- Certified organic
- Soft textures, juicy black cherry

M. Chapoutier

Domaine de Bila-Haut

Rue Ramps du Sarrat

66720 Latour-de-France

West of Perpignan

- Syrah – Grenache – Mourvedre
- Rich sensual southern French wine
- Roussillon red a relative bargain for this producer

Domaine Regis Boucabeille

Rd 614

66550 Corneilla-la-Rivière

West of Perpignan

- Grenache – Syrah – Carignan
- Les Terrasses 2013, smoky red fruit, plum, floral, stony, garigues aroma (herbs/balsamic/pine)
- Shale covered slopes

Domaine le Soula

Avenue des Fenouilledes

66220 Prugnanes

- Trignone No.13 (white)
- Floral and rich



La Peira
 Mas de Daumus Gassac
 Mas de la Seranne
 Domaine de la Grange des Pères
 Domaine Saint Sylvestre

Domaine Leon Barral
 Château de Caraguilhes
 M. Chapoutier
 Domaine Regis Boucabeille
 Domaine le Soula

Marseillan
 - Pittoresque fishing port

NIMES

Arènes (Sud) 06	CV 2	Château St. Etienne	DU 17	Maison Carrée	CU 33
Auguste 07	CU 4	Forêt de Coustades	DU 18	P. de la	CU 34
Bornes R. des	CU 5	Fort de la	DU 19	Martins R. des	CU 35
Château R. des	CU 6	St. Etienne	DU 20	St. Etienne	CU 36
Château St. Etienne	CU 7	St. Etienne	DU 21	St. Etienne	CU 37
Château St. Etienne	CU 8	St. Etienne	DU 22	St. Etienne	CU 38
Château St. Etienne	CU 9	St. Etienne	DU 23	St. Etienne	CU 39
Château St. Etienne	CU 10	St. Etienne	DU 24	St. Etienne	CU 40
Château St. Etienne	CU 11	St. Etienne	DU 25	St. Etienne	CU 41
Château St. Etienne	CU 12	St. Etienne	DU 26	St. Etienne	CU 42
Château St. Etienne	CU 13	St. Etienne	DU 27	St. Etienne	CU 43
Château St. Etienne	CU 14	St. Etienne	DU 28	St. Etienne	CU 44
Château St. Etienne	CU 15	St. Etienne	DU 29	St. Etienne	CU 45
Château St. Etienne	CU 16	St. Etienne	DU 30	St. Etienne	CU 46
Château St. Etienne	CU 17	St. Etienne	DU 31	St. Etienne	CU 47
Château St. Etienne	CU 18	St. Etienne	DU 32	St. Etienne	CU 48
Château St. Etienne	CU 19	St. Etienne	DU 33	St. Etienne	CU 49
Château St. Etienne	CU 20	St. Etienne	DU 34	St. Etienne	CU 50

Google Maps Mas de Daumas Gassac



Map data ©2015 Google 1 km

2 HRS TO OPPEDE


**MAS
DE
DAUMAS GASSAC**



Mas de Daumas Gassac

2 reviews

Winery

Haute vallée du Gassac, 34150 Aniane, France

daumas-gassac.com

+33 4 67 57 71 28

GREAT ROSE

 Share Report Abuse Next Blog»

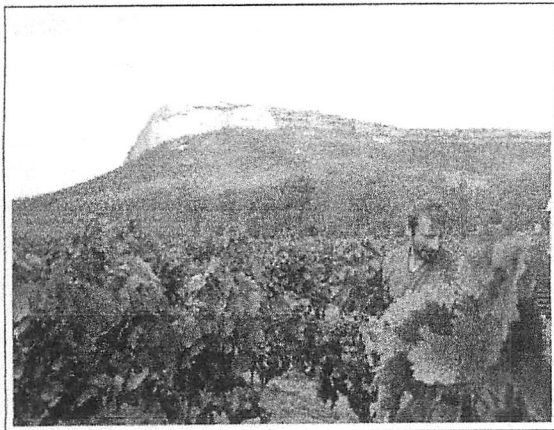
Create Blog Sign In

TASTINGROOM

WELCOME TO TASTING ROOM, BATH'S SPECIALIST INDEPENDENT WINE MERCHANT. SITUATED IN LARKHALL, MINUTES FROM THE CENTRE OF THE HISTORIC CITY OF BATH, WE PROVIDE EXPERTISE COMBINED WITH EXCELLENT SERVICE. OUR AIM IS TO HELP YOU CHOOSE THE PERFECT WINES - NEW OR FAMILIAR, ONLINE OR FROM THE SHOP - FROM OUR EXTENSIVE RANGE. WE SOURCE AND IMPORT OUR WINES DIRECT FROM SMALL, FAMILY-RUN DOMAINS, SO WE KNOW WE ARE GETTING THE BEST QUALITY AT THE BEST PRICE AND BUYING YEARS OR GENERATIONS OF EXPERTISE.

TUESDAY, 20 MARCH 2007

Chateau de Valflaunes - Top Pic St Loup wine



Château de Valflaunès
Pic Saint-Loup - Fabien
Reboul

Decanter magazine described talented Fabien Reboul as 'one of a new generation of stars in Pic St Loup', a northern area of Languedoc that is blessed with a wild beauty that carries through to its wines. Reboul accumulated his wine-making experience through his extensive

travels through Côtes du Rhône, Burgundy (Corton Charlamagne), Oregon and the Dry River winery in New Zealand, before returning to his native village, Valflaunès due north of Montpellier, to make his first wine in 1998.

We had to wait for twelve months to get our hands on this tranche of wines, his Espérance cuvée (Syrah, Grenache, Mourvèdre and Carignan), and then waited a further eight months to get the top cuvées (T'EM T'EM, Syrah and Grenache and Un peu de Toi, Syrah and Carignan), which is made in such small quantities that the majority is snapped up by the home market well before it is even in barrel. But it was certainly worth waiting for! (A word of advice for anyone visiting the Domaine - beware the neighbour's dogs!)

Craggy and remote Pic St-Loup, in the north of the Côteaux du Languedoc region, is where Château de Valflaunès has about 13ha (32 acres) of vines; half of those being syrah. Fabien Reboul is totally dedicated to his art of producing smooth, richly concentrated and fruity red wines and he strives to be the best. His obvious passion in all things vinous and his friendly welcoming nature makes him a charismatic man and we are delighted to have his wines on our list.

Espérance is consistently at the top of our best sellers in our shop in Larkhall.

POSTED BY TASTINGROOMCREW AT 11:45

1 COMMENTS:

Anonymous said...

Hello,

I have a message for the webmaster/admin here at

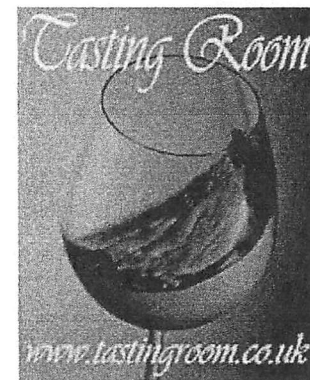
TO VIEW OUR WHOLE RANGE OF WINES, WHISKIES AND BRANDIES, VISIT OUR MAIN WEBSITE

www.tastingroom.co.uk

SLIDESHOW



HOME OF WINE TASTING



Wine tasting for clubs, friends, organisations and corporate events

ORGANISE YOUR OWN CORPORATE TASTING

Whether you are a small Company team or a Department within a larger Organisation, a private wine tasting is a great event. Building team spirit or thanking staff, whatever the reason, an



MAS DE LA SERANNE

Notre nouveau site internet est en cours de réalisation.

Ouverture prévue : avril 2012

Contactez-nous :

Mas de la Seranne

M. et Mme VENTURE Jean-Pierre

34150 ANIANE

Téléphone / Fax : 04 67 57 37 99 - Email: mas.seranne@wanadoo.fr

DGinteractive création de site internet hérault

INTERESTING AREA . WITH OTHER
WINERIES .

FOR ROUTE FROM PIC SAINT-LOUP

[Customer access](#) [Contact](#) [Send to a friend](#)



DAUMAS GASSAC

[Accueil - Home](#)



[VISIT AND TASTING](#) | [MAP](#) | [WHERE TO STAY](#) | [WHERE TO EAT](#) | [THE REGION](#) | [LINKS](#)



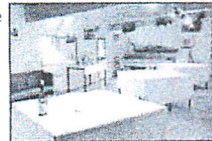
Wine Tour & Tasting

Visit of the underground cellars

Come and discover Daumas Gassac in this wild and unique valley, close to the outstanding romanesque abbey of St Guilhem-le-Désert.

Direction :
Take the A750 / N109 / E11 , go to Gignac and take the direction of Aniane on the D32.
After 4 Km take a right-hand turn in the direction of Daumas Gassac, follow the signposts for 2 Km.

GPS coordinates: longitude 3,59080 - latitude 43,66219



Opening hours

Everyday except sunday and public holidays : from 10am to 12 and from 2pm to 6pm.
July and August: from 9.30am to 6.30pm.

For groups (from 10 people) make an appointment.

Mail : prives@daumas-gassac.com

Tel : 04 67 57 88 45

Fax : 04 67 57 41 03

N° déclaration CNIL : 1300897All rights reserved - Daumas Gassac - [Legal information](#) | [Sales conditions](#)
W3C XHTML 1.0 W3C CSS 2.0 [HTML5.2](#) créer sa boutique en ligne

[The domaine](#)

[The wines](#)

[The shop](#)

[Visit and Tasting](#)

[The vintages](#)

[Events and News](#)

[Become a friend of Daumas Gassac](#)

WORTH GOING TO.

Cote Du Rhone – Chateauneuf / Gigondas Wineries

Domaine de Cabasse

Route de Sablet

84110 Seguret

- Sablet, Cote du Rhone Village, Les Deux Anges
- Grenache, Syrah, Carignan
- Available by special order in Vancouver
- Located south of Gigondas

La Domaine Montirius

1536 Route de Sante Edwige

84260 Sarrians

- Le Clos Vacqeyras, Grenache/syrah

Domaine De La Janasse

27 Chemin du Moulin

84350 Courthézon

- Perennial favourite
- Grenache, Syrah, Carignan, Mourvedre, Cinsault
- See attached description

Chateau de Montfaucon

22 Rue du Chateau

30150 Montfaucon

- Grenache, Syrah, Cinsault, Carignan

Domaine Grand Veneur

Alaine Jaune & Fils

1358 Route de Chateauneuf du Pape

84100 Orange

Ventoux and Luberon Wineries

French Syrah's distinguish themselves in the Northern Rhone (Heritage, Côte Rotie, St. Joseph) but are not top-of-mind in the Southern Rhone where Grenache blends rule. Rare to be surprised by any restaurant listing the grape varieties of a bottle on the wine list, and even rarer that patrons realize what they are drinking, or they assume that since they are in the Southern Rhone it must be Grenache-based blended with Syrah or Mourvèdre, or a bit of both. As anyone who hits the wine trails of the Vaucluse are quick to discover, the Syrah-dominant wines — from 70% to 100% Syrah – produced in the Ventoux and the Côtes-du-Luberon are a stupendous drink: deep violet in color, displaying intense flavors of blackberries, black currants and plums, bolstered by black peppery notes, and they are often the elite offering of the estate. Here are nine estates – clustered by the regions of the Ventoux and the Luberon – which produce Syrah-dominant vintages:

Domaine de Fondrèche: Cotes du Ventoux Persia, 90% Syrah (from 50-year-old vines) and 10% Mourvedre. Consistently one of the top quality producers in the Ventoux. Robert Parker at the Wine Advocate raves about this estate, and loves this blend: “Abundant notes of blackberries and cassis interwoven with hints of espresso roast, white chocolate and acacia flowers are found in this tightly knit, full-bodied, impressive 2010. Tasting like a top-flight northern Rhone Hermitage rather than a wine from the Cotes du Ventoux..”

Address: 2589 La venue Saint Pierre de Vassols – 84380 Mazan, Tel . 04 90 69 61 42, Wine Cellar open Monday to Friday from 2:00 to 6:00 p.m., take D163 north from Mazan.

Domaine du Tix : Cuvée Bramefan, a 90% Syrah blend with 10% Grenache. Ruby red color with silky and velvety texture, complex structure of vivid fruit flavors, smooth tannins and a spicy finish. Forty sommeliere of leading restaurants in France offer the Bramefan. Excellent price / quality value.

Address: 84570 Mormoiron en Ventoux, Vaulcuse France, Tel: 04-90-61-84-43; Directions: Arriving to Mormoiron on D942, turnoff to gravel road on south side, opposite side of direction to village. Look closely for signage.

Château Pesquié: Quintessence (Pesquié’s top cuvee), 80% Syrah and 20% Grenache, aged 12 months in oak, and bottled unfiltered. Robert Parker of the Wine Advocate flipped over this bottle: “Its dense opaque ruby/purple color is followed by sweet aromas of blackberries, blueberries, charcoal, and acacia flowers. Dense, thick, unctuously textured, exuberant, and ostentatious, this terrific wine can be enjoyed over the next 3-5 years.” The **Quintessence** is full-bodied with a clean finish.

The approach to Château Pesquié, the largest estate in the Ventoux, is impressive, its grandeur and scale summon up properties in the Châteauneuf du Pape.

Address: Route de Flassan, 84570 Mormoiron, Tél. 04 90 61 94 08, Wine shop is open all year long from Monday to Saturday included from 9 to 12 a.m and from 2 to 6 p.m and everyday from Easter until September 30th. [Website](#) Directions: Take D144 north from Mormoiron. Check out Gary V’s Wine Library videos on Pesquié Wine Tastings, such as this one with Fredrich Pesquié

Les Vins D’Olivier B: La Première: 100% Syrah, matured 18 months in barrels, only 1000 bottles every two years, massive structure, dense fruit, and obscenely rich, distinct chocolate notes. Wines grown in organic tradition and harvested by hand.

Olivier B’s ‘auteur’ wines find their way to some of the better restaurant tables in Provence. A passion for self-expression asserts itself in Olivier’s blog where he pretty much says what’s on his mind, and in the dedications printed on the labels of his bottles. Logo: A black silhouette of Olivier B wearing a short brim African straw hat.

Wine Shop: Center of Villes sur Auzon, next to the bakery. Open Friday, 4-7 p.m., Saturday 10:30 a.m. – 12:30 p.m., 4-7 p.m., and Sunday 10:30 a.m. – 12:30 p.m. (Hwy 942 east from Carpentras)

Tel: 04-90-61-72-07 or 06-25-39-08-60 Email: obvigneron@free.fr, [Blog](#)

Saint Jean du Barroux

844330 Le Barroux

- See attached description



Domaine de Cabasse

Domaine De La Janasse

Domaine Grand Veneur

Chateau de Montfaucon

Saint Jean du Barroux

Domaine de Fondrèche

Château Pesqué

Les Vins D'Olivier B

Domaine du Tix

La Domaine Montirius

Carpentras*

Domaine Chasson

Domaine Senanque

Village des Bories

Gordes

Avignon



DOMAINE
DE LA
JANASSE



News
Home
Cellar articles
Available Wines
Technical cards
Vine articles
Our importers
Contact

Pictures
Tasting

Domaine de La Janasse
Aimé, Christophe et Isabelle Sabon

27, Chemin du Moulin
84350 COURTHEZON
phone +33 (0) 4 90 70 86 29
Fax : +33 (0) 4 90 70 75 93
email : lajanasse@free.fr

Open hours:
From monday to friday 8-12 a.m. and 2-6
p.m.
Saturday and sunday appointment only

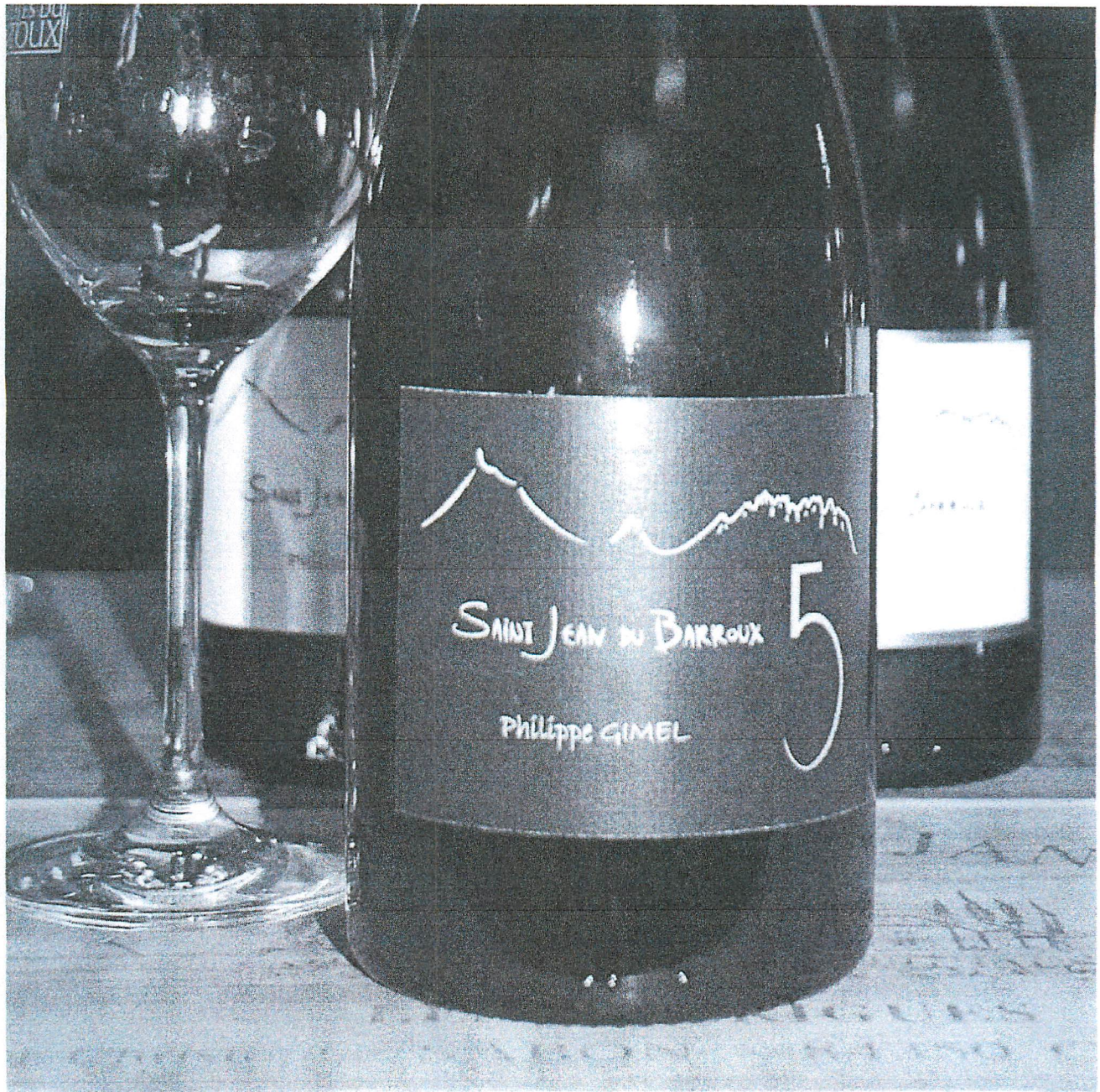
During the season of grape harvest
(september):
appointment only

Courthézon is located in edge of Main road
7 to 20 km of Avignon and 8 km of Orange.

Close main interests:

- Chateauneuf du Pape : 5 km
- Avignon : 20 km
- Orange : 8 km
- Vaison la Romaine : 30 km
- Les baux de Provence : 60 km
- Saint Rémy : 50 km
- Le Mont Ventoux : 40 km

THIS IS A MUST
BUY IN BULK



I had become aware of the mysterious Philippe Gimel owner of the Ventoux winery Saint Jean du Barroux via some Danish guests who spoke highly of his efforts. As our season had slowed down I finally found the time to seek the man out, hear his story, and taste his wine. And what a truly fascinating story it is....I feel a tad embarrassed that we have only just caught up with this neighbour of ours, he is a genuine one-off... but at least now we know each other.

Philippe's background was in pharmacy in the Lorraine area – a training in chemistry that has proved extremely useful as a wine maker. After taking an Oenology qualification in Toulouse he entered the wine business and learnt his craft via internship and later full time employment with two of Chateauneuf du Pape's finest domaines Beaucastel and Jannesse. With ambitions to make serious wine himself he set about acquiring a vineyard with a terroir capable of emulating the quality level of his mentors...but at an affordable price. In 2003 he purchased 16 hectares of land (12ha of terraced vines) to the north of the Malaucene – Barroux road on the lower foothills, 300m-400m, of Mt.Ventoux. Philippe explains its advantages " The vineyards not only have elevation they face mainly north providing a cooling counterbalance to the fierce summers. The soil which is stony clay is likewise cool whilst providing superb water retention properties. The terroir here may be humble Ventoux but in terms of its geology, elevation and aspect it is a potential match for Chateauneuf du Pape." The existing vines were around 30 years old at the time of purchase, the grapes being sold to the co-operative. The usual Ventoux varieties are here- a majority of Grenache amongst the reds plus Syrah, Carignan, Counoise and for the whites Grenache blanc, Bourboulenc and Clairette. Philippe is proud of the bio-diversity in

his vineyard...small terraces interweave with brambles, cherry trees, oak woodland and garrigue brush. I wasn't surprised to hear the farming is fully organic and the domaine carries the Ecocert stamp though no great play is made of this in the promotional material or on the bottle. Yields here are dramatically lower than the norms for the appellation...around 20hl/ha..and these are achieved naturally via the poverty of the soil rather than any greenharvesting intervention. The vineyard is a gorgeous place to stand..even on a cold November day...the terraces here enjoy a panoramic view, looking across to the Dentelles and the monastery of La Madeleine.....there is a smaller chapel/farm of Saint Jean just across the road from which the wine takes it's name. I asked Philippe about the style of wine he was aiming to achieve – he told me it was about using the natural resources available to make a great Ventoux wine, a wine that not only gave great expression to this special terroir but defys expectations of the appellation. On returning to La Madelene yesterday I looked up the Ventoux entry in the Oxford Companion to Wine, normally a reliable guide: it's summary of the quality level available: " the reds...lack substance and real interest". On the evidence of my tasting yesterday Philippe in just 5 vintages has already achieved much of his ambition in that he is producing wines with tremendous concentration and power yet balanced with an elegance and a complexity that I havent yet encountered elsewhere in the appellation.

So far so fascinating...but the knock out for me is to find that Philippe doesn't yet have a winery...he is renting a corner of a shed from a farmer in the valley just the other side of Malaucene from us. Here a jumble of mostly second hand concrete cuves and other wine making equipment – a few barriques in evidence but in principal Gimel is not a big oak fan- purchased from his Chateaufort contacts form the basis of his operation for the time being. And whats more he manages everthing on his own..the viticulture, the wine making, the administration at his home in Caromb and a vigorous marketing campaign...he had just returned from Denmark when I met him yesterday. Amazing energy!

The wines: in truth the range is somewhat complicated to get your head around...partly because of the difficulty of managing a small production whilst being totally reliant on export sales. As a consequence some decisions seem to be driven by specific important customers – notably the Rhone/Ventoux loving Danes, there is a bottling made with a lighter style exclusively for their market. It was a bit too chilly to show the wines at their best but we persevered: I tasted the red Oligocene 2004 (dark fruit, pepper, superb ripe tannins and a long long velvet finish, ready to drink), the 2005 (a little closed in the cellar but the bottle I took home to enjoy with my Magret de Canard last night had opened out wonderfully...lovely garrigue herb/pepper aromas), a super concentrated 2006 and a stunning white - the 2006 – white flowers, melon and a delightful melange of dairy fat and minerality on the palate. These wines are not cheap...if you can find them they will be around €17-20, ex-domaine prices....but the quality level is what can I say?...remarkable. Thank you Philippe.You can read more about this winery at Philippe's web-site: <http://saintjeandubarrouxfrance.spaces.live.com>

This entry was posted on Thursday, November 12th, 2009 at 9:45 am and is filed under [Uncategorized](#). You can follow any responses to this entry through the [RSS 2.0 feed](#). You can [leave a response](#), or [trackback](#) from your own site.

Leave a Reply

Name (required)

Mail (will not be published) (required)

Website

[[Submit Comment](#)]

Luberon Wineries (Lourmarin Area)

Château Val-Joanis, Château Val-Joanis Rouge, 90% Syrah, 10% Grenache. Balanced, well-rounded and smooth with concentrated fruit of black currants and cassis, and a clean finish.

Château Val-Joanis is one of the renowned properties in the Luberon. Located on the site of a Roman villa where wines were once delivered to Rome, the property and the vineyards underwent major renovations and rehabilitation beginning in 1977. The vineyard of 145 acres extends up to an altitude of 1640 feet, the highest plots are called Les Griottes. The Château welcomed **Anthony Bourdain** and his [“No Reservations”](#) Travel Channel crew (photo above). Lovely wine shop open in July and August everyday from 10 am to 7 pm.

Address: 84120 Pertuis, France, Tél: 04 90 79 20 77,

Château Fontvert: Les Restanques rouge, 70% Syrah, 15% Grenache Noir, 15% Mourvèdre. Deep purple color, aromas of red fruit and soft spices, round, well-balanced with very dense blackberry and black currants and a clean finish (With 20% less Syrah than some of the other cuvees, the spices are softer and rounder).

Address: Chemin de Pierrouret, Lourmarin, Tel: 04 90 68 35 83, Cellar open May – September From May to September, Monday to Friday : 9 am – 6.30 pm, and Saturday : 10.30 am – 12.30 am and 3 pm – 6.30 pm.

Directions: Just as you leave the village of Lourmarin towards Bonnieux and Apt on D943, the Chemin on the left. Easy to locate once you are in Lourmarin. Note: The [Avignon Wine Tour](#) visits the Château Fontvert on its Tuesday Circuit.

Château La Verrerie: The Grand Deffand Red, 95% Syrah and 5% Grenache, is a wine of great complexity with intense fruit and aromas of black currant, toasted coffee and leather.

If you have one Syrah to take away with you from the Vaucluse, this is worth trying. An astonishing site and vineyard of 45 acres renovated and reinvigorated by Jean-Louis Descours and his son Gérard. When the Descours assumed control in 1981, a wine cooperative accepted the property’s entire production.

Address: 84360 Puget-sur-Durance, Directions: Enter Merindol take Direction Lauris-Pertuis. After 6,6 Km, turn left, direction Les Baumes (C12), and 0.8 Km, take a right, direction Lotissement Les Baumes (D 173). After 0.8 Km, enter the Bastide de la Verrerie by a small bridge on the left. Tel: 04-90-08-32-98, [Website](#) Note: [Avignon Wine Tours](#) visits this estate on its Tuesday wine circuit.

Marrenon: Grand Marrenon, Cotes du Luberon, 70% Syrah and 30% Grenache from old, high altitude vines aged in 30% new French oak. Deep purple in color, smooth tannins, and reasonable price points. Marrenon is a cooperative of 2000 wine growers taking in 15,000 acres of vineyards. They produce three Syrah-based cuvees. [Website](#)

Address for Wine Shop (Union Vignobles): Rue a Ginies or Boulevard St Roch, 84240 La Tour d’Aigues, Tel 4 90 07 27 47, Open Monday to Saturday from 8.30a.m. to 12.30 2.30p.m. to 7p.m. Open on Sundays and public holidays from 9a.m. to 12.30.

La Bastide du Claux, La Motte d'Aigues: 100% Syrah L'Orientale, rich and exquisite Syrah from this quality estate of Ludmilla and Sylvain Morey. Popular choice among 'bonnes tables' in the Luberon. Address: Campagne le Claux, 84240 La Motte d'Aigues, Tel 04-90-77-70-26, E-mail :

contact@bastideduclaux.fr, [Website](#)

Located in the eastern Vaucluse: Directions: Take route D37 south from the village, left on Chemin du Claux, follow signage.

Chateau de Clapier

RN 96

84120 Mirabeau

- Past Lourmarin in direction of gelato
- Great market day trip
- Trip advisor great experience

Luberon / Provence Wineries

Domaine de Trevallon

13103 Saint-Etienne-du-Gres

- Near St Remy, IGP Alpilles
- Cult wine with great story about label
- Definite wine to put down, no appellation, vins de pay
- Cabernet sauvignon, organic methods
- Provence Guru top five things to do

Domaine de La Vologne

RD 24 – 13810 Eygualieres

- Interesting stop on market day in Eygualieres
- Les Garrigues and Pierres Cassees, syrah/cabernet
- Spice and ripe fruit in the heart of the Alpilles
- organic

Domaine de La Citadelle

D3

84560 Menerbes

- close to house, wine cork museum
- Gouveneur Saint-Auban, Syrah/Grenache/Mourvedre
- Les Artemes, Syrah/Grenache/Mourvedre

Domaine Chasson

Route de Saint Saturnin

Rue de la Fontaine

84220 Roussillon

- Chateau Blanc, Querelle de Famille, viogner/chardonnay
- Worth trying



Domaine Chasson

Domaine de La Citadelle

Château La Verrière

Château Fontvert

Domaine de La Vullongue

Domaine de Trevallon

La Bastide du Claux

Chateau de Clapier

Château Val-Joanis

Château Marrenon

Château Fontvert

Château La Verrière

Château de La Vullongue

Domaine de Trevallon

Domaine de La Vullongue

Domaine de Trevallon

Domaine de La Vullongue

Domaine de Trevallon



Located in Ménerbes, one of the most beautiful village in France in the center of Luberon



DOMAINE DE LA CITADELLE

The Domaine

The Wines

The Corkscrew Museum

Contact

Version française



Musée du Tire-Bouchon
Domaine de la Citadelle
84560 Ménerbes
Tél. (33) 04 90 72 41 58
Fax (33) 04 90 72 41 59

Opening hours

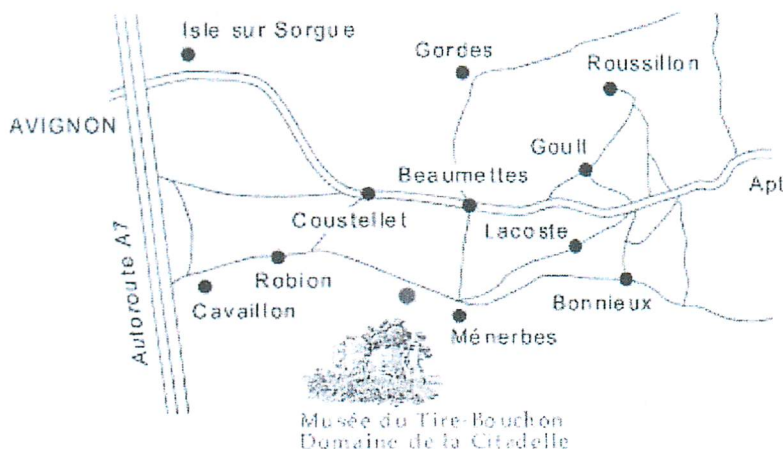
- From April 1st to October 31st :
10 -12 am / 14 -19 pm
Open evreday

- From November 1st to March 31st :
9 -12 am / 14 -17 pm
Closed on Sundays and bank holidays

Groups welcome on advance booking
Free parking

Recommended by the Guide Michelin and the Guide du Routard

contact@domaine-citadelle.com



15 MINUTES FROM HOUSE

Burgundy and south of Lyon Wineries

Le Cevenole

Quartiere le Grillou

07260 Rosieres

- Wine co-ops vins de pays
- Known for Chatus (grape), local availability from December to March
- Unexpected, superb, gold medal winner
- Tanned fruit leather, nettle
- Hints of Medoc, Rhone and Burgundies Cote de Nuit

Les Vins De Vienne

1 Zone D'Activite de Jassoux

42410 Chavanay

- Syrah, Viognier, Chardonnay, Marsanne
- South of Lyon

Domaine aux Moines

La Roche aux Moines

49170 Savennieres

- Province of Anjou, clay and shale
- Les Vieux Clos, Roche aux Moines, Chenin Blanc, pure liquid velvet
- Anjou Village, Cabernet Franc, Cabernet Sauvignon
- South of Angers, expensive

Domaine Jean-Michel Stephan

RN 86

69420 Tupin-et-Semons

- Cote Rotie near Ampuis, Syrah
- Coteau du Tupin
- Difficult terrain leaves weeds

E. Guigal

5 Route de la Taquière

69420 Ampuis

- Cote du Rhone, Syrah, Viognier

Les Vins De Vienne
Domaine Jean-Michel Stephan
E. Guigal



Le Cevenole

Bandol Wineries

Domaine Borrely-Martin

Route du Luc

83340 Les Mayons

- Rustic wine with outstanding depth of fruit, cigar, juniper, balsam, blackberry
- Organic

Chateau Pradeaux

676 Chemin des Pradeaux

83270 St-Cyr-sur-Mer

- Cyrille Portalis known as the madman of Bandol
- Organic no destemming
- Mourvedre predominant grape in Bandol

Local Rose Wines

Domaine Meillan – Pages

465 Chemin de la Garrigue

Oppède

- Inexpensive rose, very casual setting
- Purchase vegetables on occasion

Domaine la Garrelle

4803 Route de Menerbes

- More expensive than Meillan – Pages
- Winery a bit sterile but good value rose

Domaine Faverot

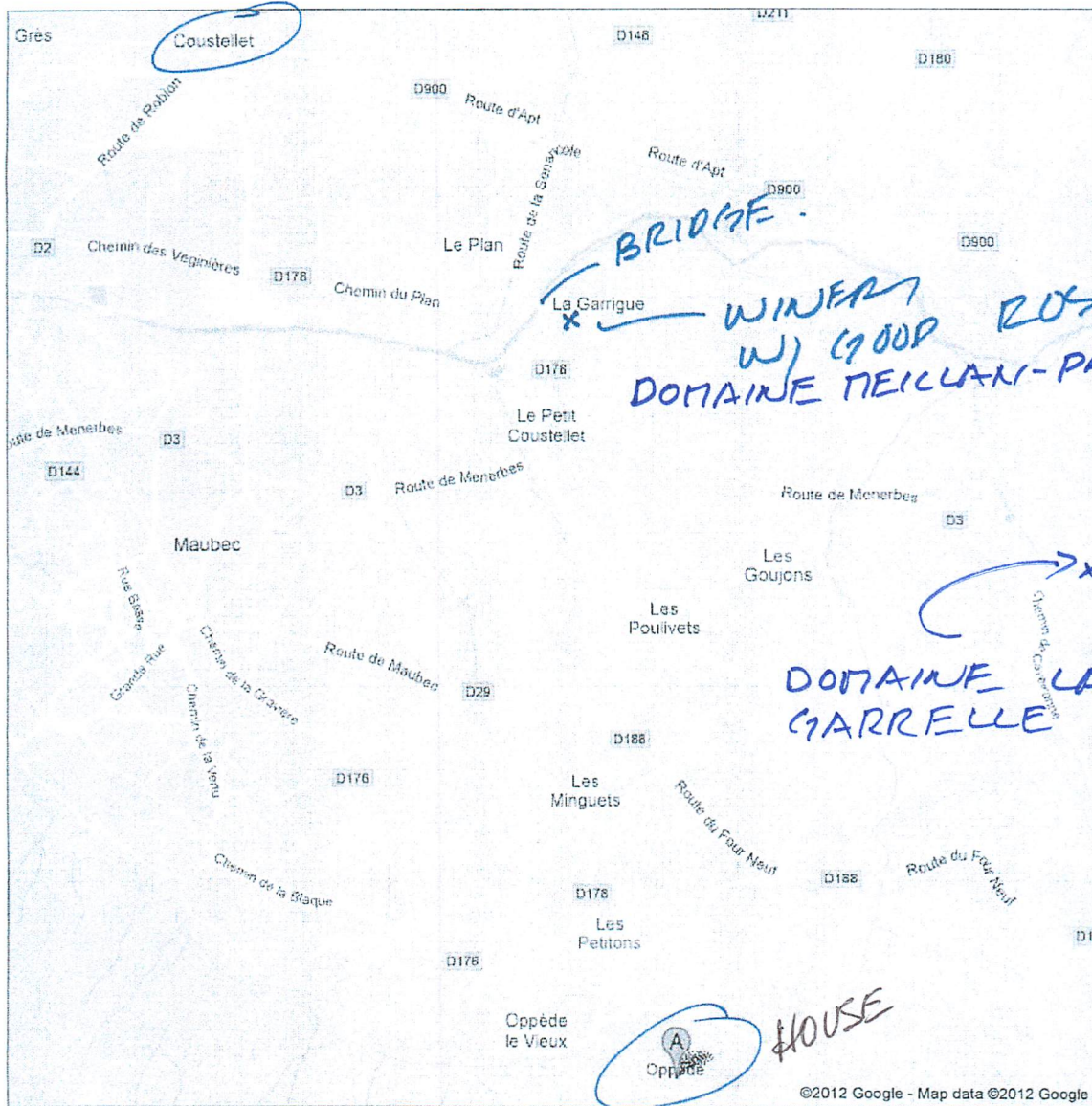
771 Route de Robion

84660 Maubec

- See attached description
- Not great wines but interesting setting

Google

Address Oppède
France



15 MINUTES FROM HOUSE.



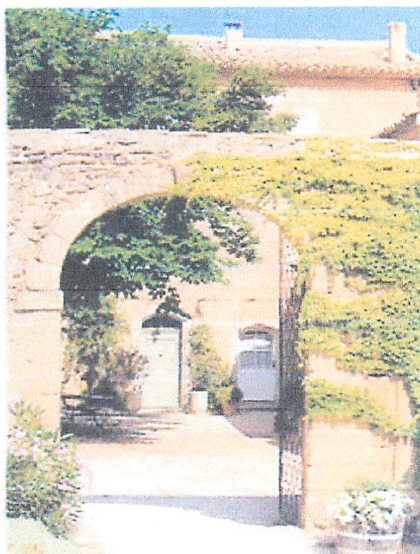
Domaine Faverot

[Domaine Faverot](#) - [Red Wines](#) - [Wines Rosé & White](#) - [Access](#) - [Cottages](#) - [Contact](#)

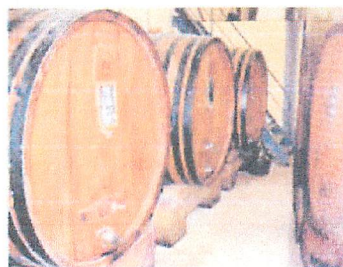
Wine domaine in Provence - Wine AOC Côtes du Luberon



Domaine Faverot is a family run winery and cellar, established in 1920 and completely restored in 1999 by the Faverot de Kerbrech family. Situated in the sun-baked foothills of the Luberon range of mountains south east of Avignon, it nestles among the famous "perched villages of the Luberon".



The Domaine is surrounded by pine woods and wild herbs.



It covers 7 hectares of vines planted in the Appellation controlled area of Côtes du Luberon. The varieties are Syrah, Grenache, Mouvèdre and Carignan for the reds and rosé and Grenache Gris, Rolle and Roussanne for the white.

Vineyards

The soil varieties found at Domaine Faverot are a mixture of sandy loams and river bed scree over limestone.

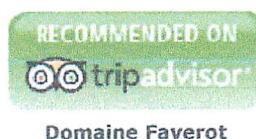
In the appellation contrôlée of the Côtes du Luberon the vines are traditionally trained as bush vines "en gobelet" or on trellised cordons with vertical shoot positioning.

Domaine Faverot comprises several parcels of vines, some of which were planted as long ago as 1920 and 1945 as well as in the "60"s and the "70"s.

The vines are cultivated organically without recourse to chemical fertilisers, pesticides and herbicides. The production of grape bunches is voluntarily limited to around 8 bunches per vine giving fairly low yield of between 30 to 40 hl/ha. This ensures a greater concentration of juice in the grapes leading to a higher quality wine.



GROUPS WELCOME
for 6 persons by appointment
From monday to friday



[Domaine Faverot](#) - [Red Wines](#) - [Wines Rosé & White](#) - [Access](#) - [Cottages](#) - [Contact](#)



Wine domaine in Provence
Wine AOC Côtes du Luberon
Domaine Faverot

771 Route de Robion - 84660 Maubec

Tel./Fax : +33 (0)4 90 76 65 16 - Mobile : +33 (0)06 86 65 48 78

E-mail : domainefaverot@wanadoo.fr

[CONTACT](#)