

MILITARY V. CIVILIAN ATTITUDES TOWARD NUCLEAR USE AND LEGALITY

CONDUCTED JULY 19 - AUGUST 5, 2024

MARGIN OF ERROR $\pm 3.9 - 4.5\%$ ¹

Sample Size: 1500 US residents

(750 active duty military & veterans / 750 general population)

conducted by Human Security Lab @ UMass Amherst in collaboration with YouGov

with generous support from Lex International and the Swiss Philanthropy Fund

¹ This range reflects four numbers, as the survey was carried out on two samples (general population and military-trained Americans) in two waves each (before and after) with the first two questions reaching all 1500 respondents on the first wave, and the remaining questions reaching a slightly lower number of the same respondents who were recontacted later (632 military-trained respondents and 571 general population respondents). The exact margins of error for each of the four samples are: Wave One, General Population: ± 3.9 ; Wave One Military-Trained: ± 4.0 ; Wave Two General Population: ± 4.5 ; Wave 2 Military-Trained, ± 4.3 .

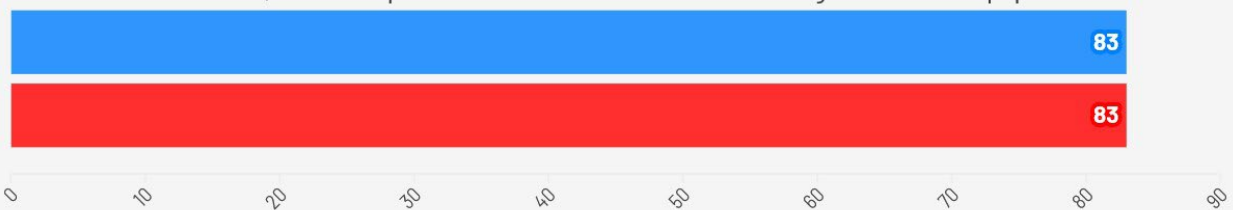
As far as you know, which statement is more accurate?

■ General Population
■ Military trained

Under international law, it is sometimes permissible to launch a nuclear strike against a civilian populated area



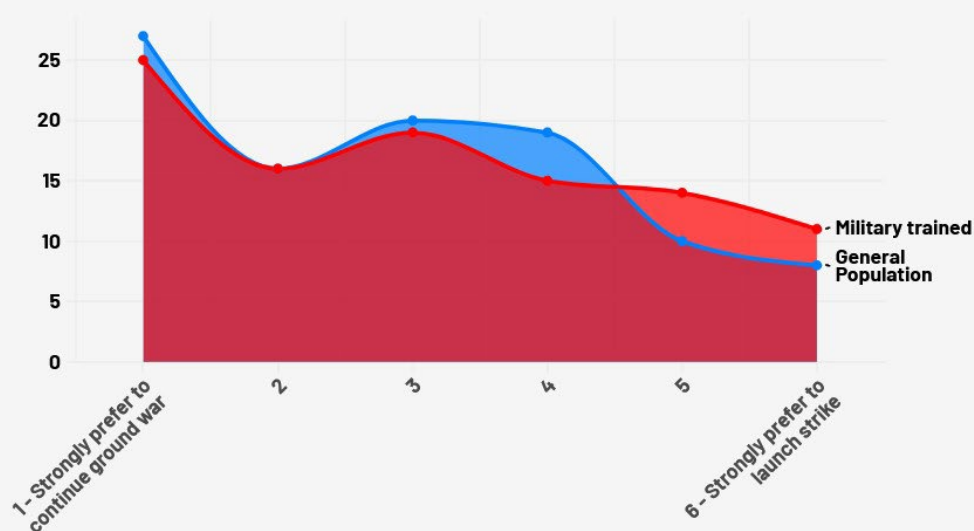
Under international law, it is never permissible to launch a nuclear strike against a civilian populated area



N = 1500 (750 general population, 750 military & veterans); margin of error \pm 3.9 – 4.0.

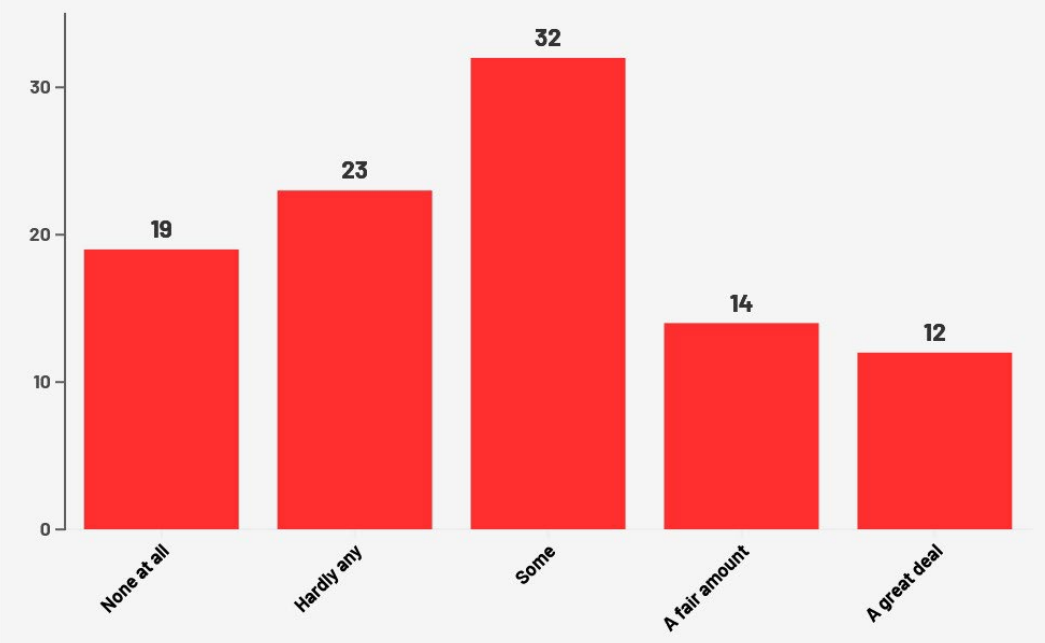
If we were at war with Iran and you had to choose between launching a nuclear strike that would directly and intentionally kill 2 million Iranian civilians, or continuing a conventional ground war with Iran that would risk 20,000 US troops, which option would you prefer?

■ General Population ■ Military trained



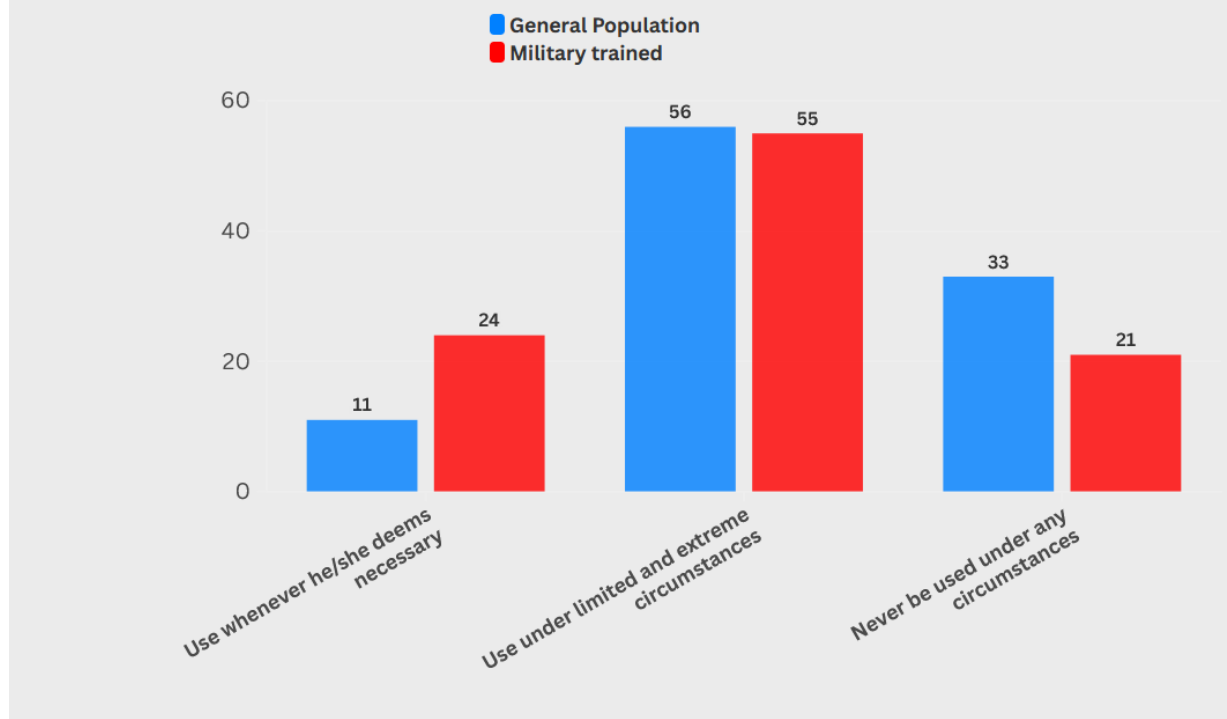
N = 1497 (747 general population, 750 military & veterans)

During your time in the **military**, how much training did you receive/ have you received in how to fight and/or survive a war involving the use of nuclear weapons?



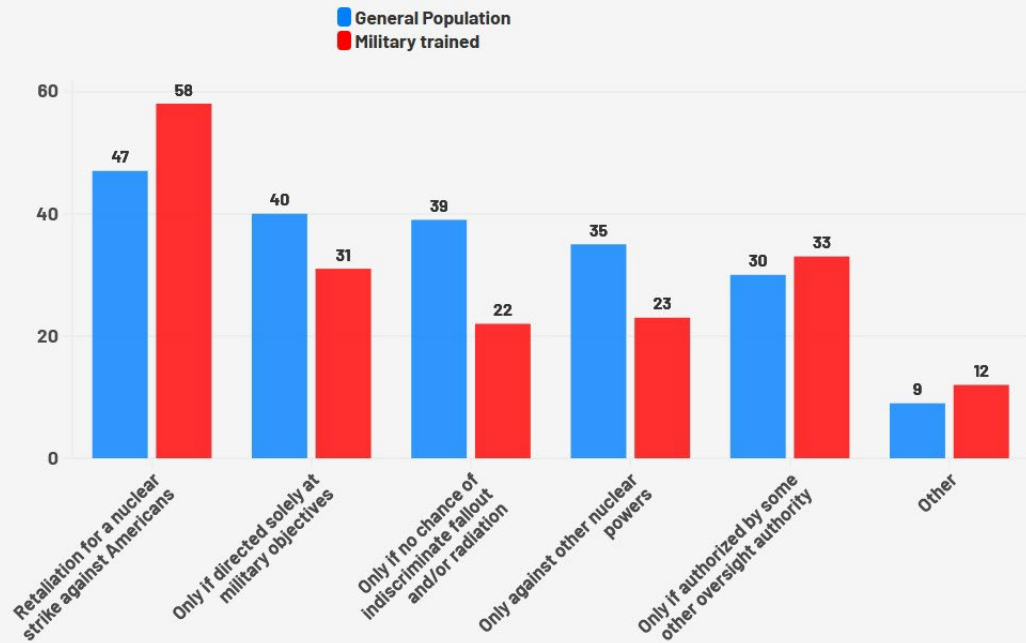
N = 682 (50 general population, 632 military & veterans)

Currently, US nuclear policy allows the use of nuclear weapons at the Commander-in-Chief's discretion. Which is closer to your view:



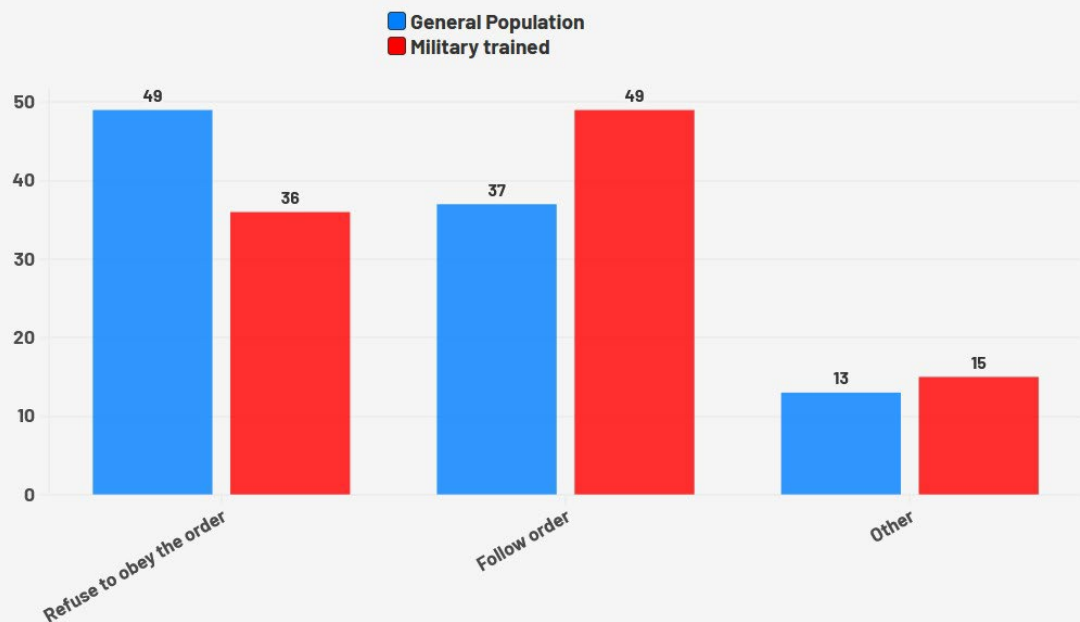
N = 1203 (571 general population, 632 military & veterans)

Which of the following limitations would you place on nuclear use?



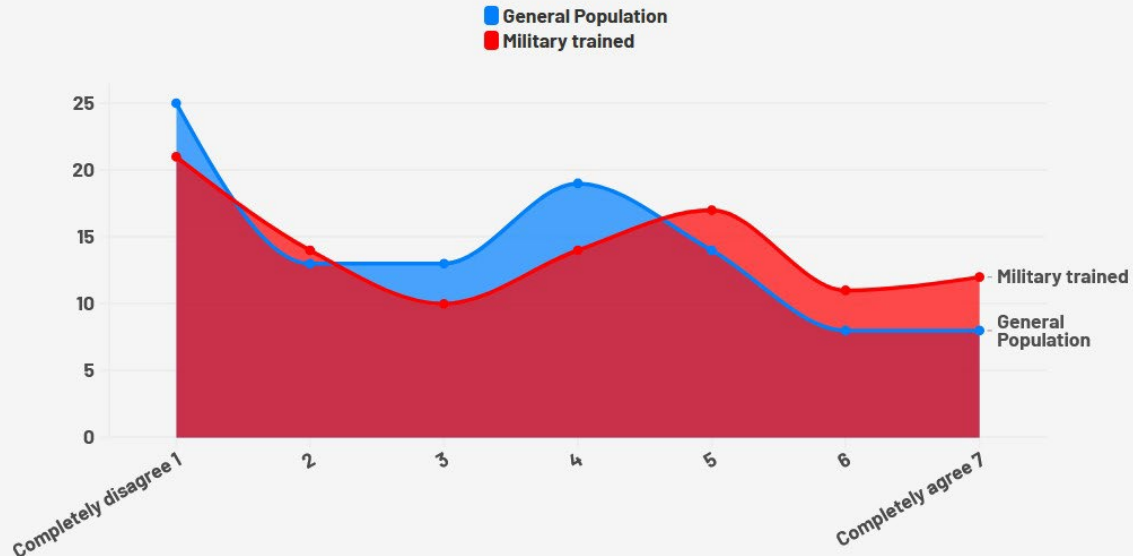
N = 673 (324 general population, 349 military & veterans)

Imagine a scenario where you served in the military and were personally ordered to participate in a chain of events that would culminate in nuclear-bombing a civilian city. What would you be likeliest to do?



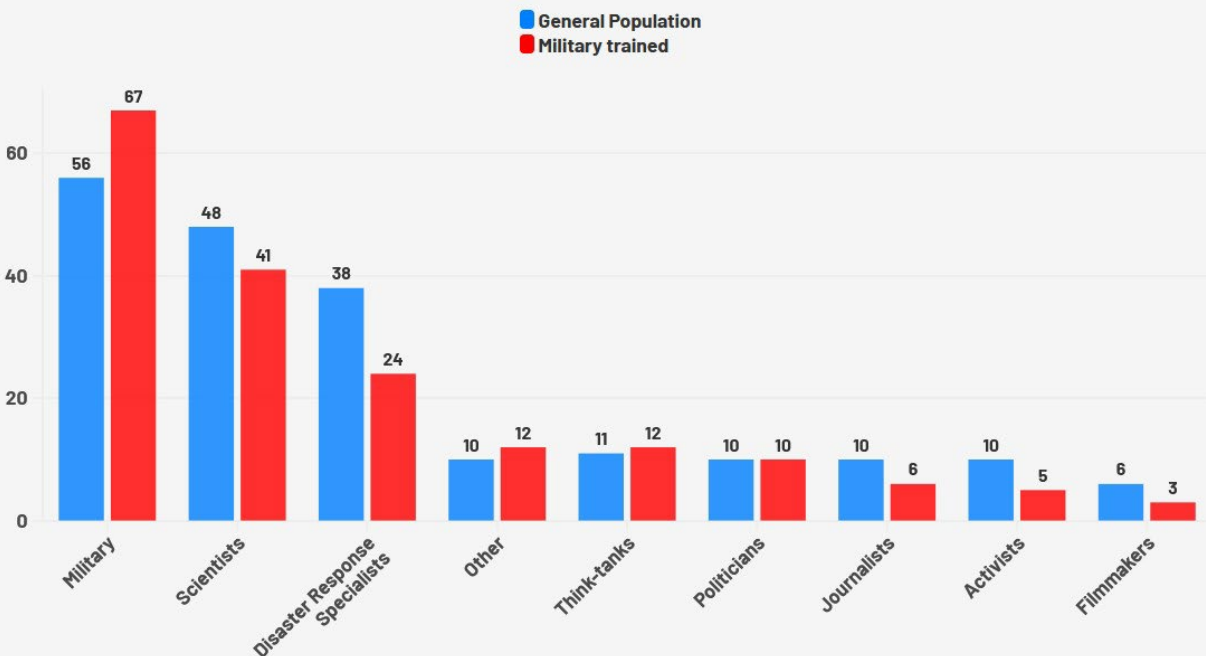
N = 1203 (571 general population, 632 military & veterans)

On a scale of 1-7, how much do you agree with the following sentence: "I can imagine a scenario in which a nuclear weapon could be used successfully to achieve a military objective without unlawfully targeting or indiscriminately affecting civilians."



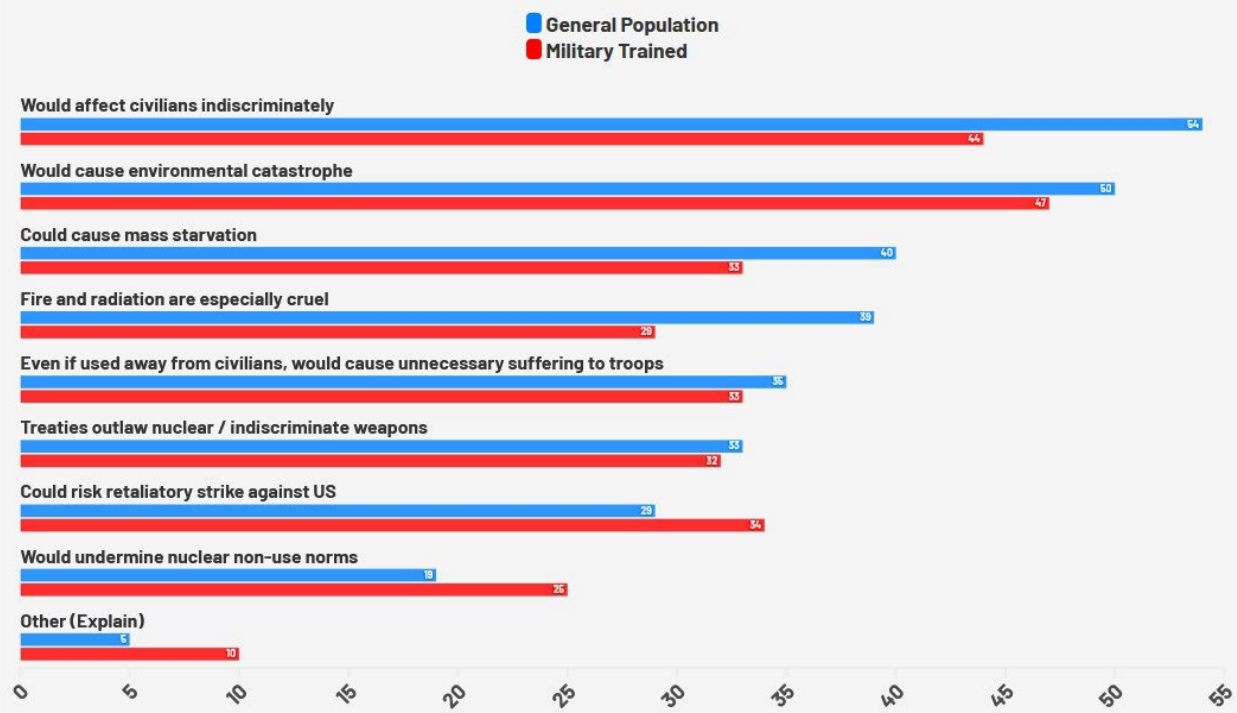
N = 1203 (571 general population, 632 military & veterans)

Which groups do you trust the most when it comes to understanding how nuclear weapons may promote or threaten US national security?



N = 1203 (571 general population, 632 military & veterans)

Of all reasons not to ever actually use nuclear weapons, with which reasons would you most agree:



N = 1,203 (632 general population, 571 military & veterans)

Demographics of Survey

Age	Military	General Population
18-29	8%	21%
30-44	15%	25%
45-64	30%	33%
65+	47%	21%
Totals	100%	100%
Unweighted N	632	571
Race	Military	General Population
White	75%	63%
Black	12%	12%
Hispanic	8%	16%
Other	5%	9%
Totals	100%	100%
Unweighted N	632	571
Gender	Military	General Population
Male	90%	48%
Female	10%	52%
Totals	100%	100%
Unweighted N	632	571
Income	Military	General Population

Under \$40K	24%	33%
\$40-\$80K	36%	32%
\$80-\$100K	14%	10%
\$100K +	26%	25%
Totals	100%	100%
Unweighted N	576	508
Education	Military	General Population
No HS	1%	6%
HS Grad	32%	33%
Some College	21%	16%
2-year Degree	17%	12%
College Grad	17%	21%
Post Grad	12%	12%
Totals	100%	100%
Unweighted N	632	571

Region	Military	General Population
Northeast	14%	17%
Midwest	20%	20%
South	44%	40%
West	22%	23%
Totals	100%	100%
Unweighted N	632	571
Party ID	Military	General Population
Democrat	37%	47%
Independent	15%	15%
Republicans	48%	38%
Totals	100%	100%
Unweighted N	627	554
Ideology	Military	General Population
Very Liberal	7%	11%
Liberal	13%	15%
Moderate	31%	33%
Conservative	28%	21%
Very Conservative	16%	11%
Not Sure	5%	9%
Totals	100%	100%
Unweighted N	632	571

Voter Registration	Military	General Population
Yes	96%	86%
No	3%	12%
Doesn't know	1%	2%
Totals	100%	100%
Unweighted N	632	571
Political Interest	Military	General Population
Most time	7%	12%
Some time	14%	16%
Now & then	32%	37%
Hardly at all	30%	23%
Don't know	17%	12%
Totals	100%	100%
Unweighted N	606	523