

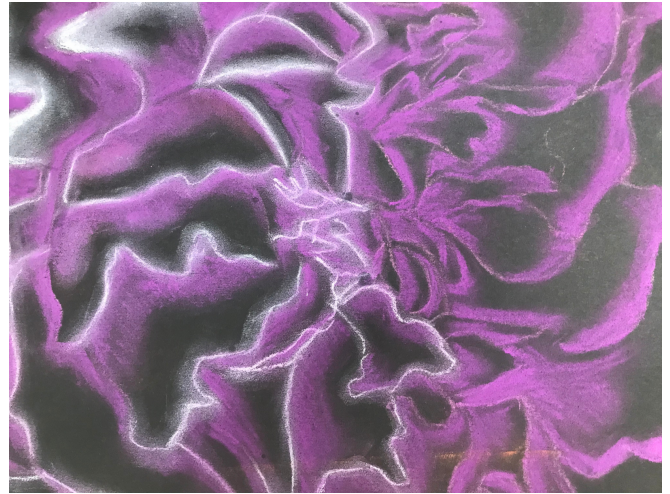
MoNA

Museum of Northwest Art

Age: Kindergarten through Fifth Grade

Lesson Duration: 30-45 Minutes

Subjects: Geometry and Science



Above: Student activity example

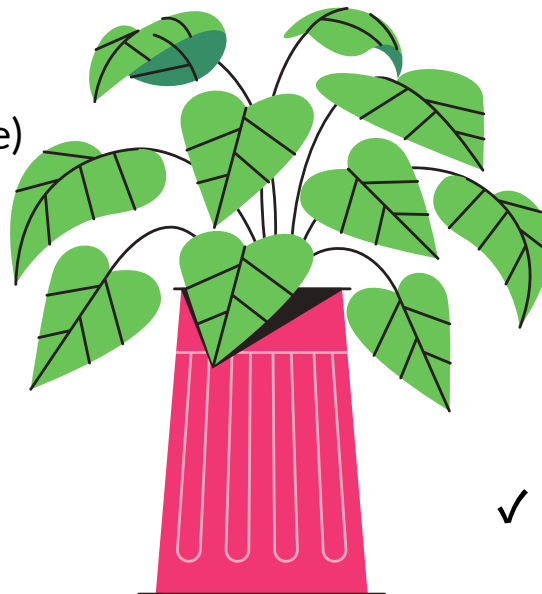
Source: Museum of Northwest Art

Botanical Drawings Inspired by Joey Kirkpatrick & Flora Mace

A HANDS-ON ART ACTIVITY
DESIGNED BY MONA
EDUCATORS

Materials

- Scratch paper
- Chalk pastels
- Tissues/Paper towel (for blending)
- Thick paper (black if possible)
- Images of Joey & Flora's sculptures (included in this lesson)
- Magnifying glasses
- Real plants to draw from observation



Description

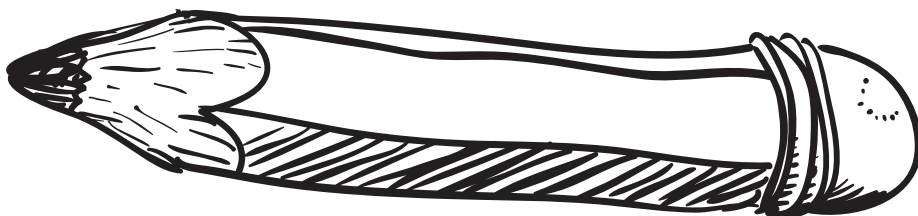
Students will draw a plant of their choice inspired by the botanical sculptures of Joey Kirkpatrick & Flora Mace. They will explore elements of line and shadow to give the piece visual depth.

Vocabulary

- ✓ Depth
- ✓ Value
- ✓ Shadow
- ✓ Blending
- ✓ Thick/thin lines

Instructions

- 1) Start with a piece of scratch paper and explore how **different thicknesses** of lines and different pressure when blended have different effects. Try drawing a really thick line with the chalk pastel and going over it a few times and then **blending** it with either a finger or the tissues/paper towels. Then, try a thin line with little pressure. Have students speak about the differences.
- 2) Explore shading shapes like squares from **dark to light**, exploring value. Also can explore shading dark vs light to represent where light and shadow are on an object like a cube or sphere (more advanced).
- 3) Show students images of sculptures created by Joey Kirkpatrick & Flora Mace for inspiration. You may also choose to share some information on the artists (included on the next page of this lesson). Have them pick a plant they would like to draw and spend some time observing it using the magnifying glass.
- 4) With the scratch paper, quickly sketch the **outline** and features of the plant they wish to draw.
- 5) On drawing paper, start drawing the outline and major features of the plant.
- 6) Blend with lines to color in the plant and give it **depth**.



About the Artists

"Joey Kirkpatrick and Flora C. Mace have worked collaboratively for the past 40 years after meeting at the Pilchuck Glass School in 1979. They have created a diverse body of work that includes blown glass vessels with applied imagery, sculpture fabricated with wood, glass and other mixed media, and large scale blown glass fruit and vegetable forms. The artists, respected for their innovative work, have consistently explored seminal themes: principles of drawing as incorporated into glass, the metaphoric content of human relationship to nature and the appropriation of materials to support a visual idea. Kirkpatrick and Mace have translated some of their life size figurative wood and glass sculptures into outdoor bronze installations. They recently had the opportunity to install a large public installation at the Seattle Center in Seattle Washington."



Bio text above & image sourced from
the artists' webpage:
kirkpatrick-mace.com/About.html



Learning and State Standards

Fulfills **Washington State Arts Learning Standards:**

- **Kindergarten:** VA:Cr2.1.K, Through experimentation, build skills in various media and approaches to art-making.
- **First Grade:** VA:Cr1.2.1, Use observation and investigation in preparation for making a work of art.
- **Second Grade:** VA:Cr2.2.2, Demonstrate safe procedures for using and cleaning art tools, equipment, and studio spaces.
- **Third Grade:** VA:Cr1.2.3, Apply knowledge of available resources, tools, and technologies to investigate personal ideas through the artmaking process.
- **Fourth Grade:** VA:Cr1.2.4, Collaboratively set goals and create artwork that is meaningful and has purpose to the makers.
- **Fifth Grade:** VA:Cr2.1.5, Experiment and develop skills in multiple art-making techniques and approaches through practice.





Showy Lady's Slipper, 2015, flower, composite, glass and steel, 27.5 x 20 x 8 inches



Hardy Orchid, 2015, flower, composite, glass, paint and steel, 27.5 x 20 x 8 inches



3 *Bloom Tazetta*, 2015, flower, composite, glass, paint, and steel, 27.75 x 21 x 8 inches

Image source: <http://www.kirkpatrick-mace.com/Botanicals.html>