

Aneurin Leisure Adult Community Learning

COURSES FOR ADULTS

2021-2022



Welcome to the Aneurin Leisure Adult Community Learning Brochure 2021 - 2022

In this brochure you will be able to find information on Aneurin Leisure's Courses for 2021/22. We have courses to suit everyone whether you wish to learn new skills or improve existing skills. There are courses to help enhance your job prospects, as well as courses for leisure and pleasure.

Aneurin Leisure are continuing to work as part of the Gwent Community Learning Partnership, to provide high quality courses for all learners.



Aneurin Leisure is committed to improving community life through learning, leisure and culture.

Adult Community Learning is an integral part of this commitment, providing high quality learning opportunities across Blaenau Gwent.

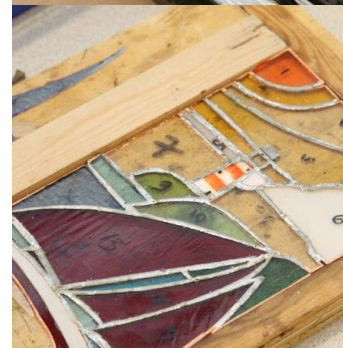
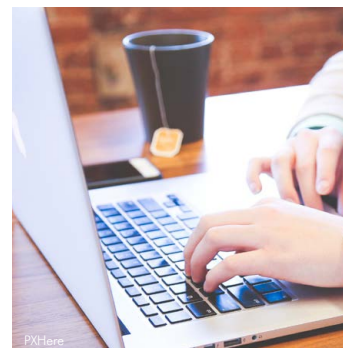
We know the benefits of becoming involved in lifelong learning and understand that people engage with adult learning for a wide variety of reasons – to improve their employment prospects, to extend their social networks or to rediscover a passion for learning. Through our network of Learning Action Centres we provide a range of learning opportunities which can support you in achieving your aspirations.

During the recent Covid 19 pandemic we have worked hard to ensure that we can provide a safe learning environment and please be assured that your safety and wellbeing will always be our main priority. In order to keep you safe there maybe occasions where we adopt a blended learning approach, mixing face-to-face teaching with on-line teaching.

If you would like further details of the learning opportunities in this brochure please contact any of our Learning Action Centres. We have learning opportunities starting throughout the year, the details can be found on our website or call us to find out more information.

We would like to wish you the best of luck on your learning journey.

Ceri Waters • Partnership, Funding and Contracts Manager



Contents

Computer Courses	5
IT Qualifications	5
Essential Skills for IT Work and Life Courses	6
Digital Literacy Courses	6
ECDL - British Computer Society	7
Improve your English and Maths	9
GCSE English and Maths	10
Independent Living Skills	11
British Sign Language	15
ESOL	16
City & Guilds Photography	16
Level 2 Counselling	17
Level 3 Counselling	18
Level 2 - Support Work in Schools	19
Cake Decoration	20
Cooking with your Child - online course	20
Nature, Equip, Thrive Project	21
Groups & Clubs	21
Learn Welsh	22
Room Hire	23
General Information	24
Blaenau Gwent Libraries	26
Bridges Into Work 2	27
Working Skills for Adults 2	28

Aneurin Leisure Adult Community Learning

Providing a range of learning opportunities throughout Blaenau Gwent:

Ceri Waters - Partnership, Funding and Contracts Manager

t: 01495 355319

e: ceri.waters@aneurinleisure.org.uk

Karen Bennett - Adult Community Learning Manager

t: 01495 355301

e: karen.bennett@aneurinleisure.org.uk



Abertillery Learning Action Centre

Alma Street, Abertillery, NP13 1YL

t: 01495 355 895

e: julie.griffiths@aneurinleisure.org.uk

Brynmawr Learning Action Centre

Market Square, Brynmawr NP23 4AJ

t: 01495 355595

e: julie.griffiths@aneurinleisure.org.uk

Ebbw Vale Learning Action Centre

James St, Ebbw Vale NP23 6JG

t: 01495 355300

e: carolyn.roberts@aneurinleisure.org.uk

Tredegar Community Education @ Tredegar Library

The Circle, Tredegar NP22 3PS

t: 01495 355300

e: lowan.reynolds@aneurinleisure.org.uk

Computer Courses IT Qualifications

Essential Skills for IT – an entry level course covering the basics of using a computer. This course is designed to encourage communication skills and ICT so that learners are able to use the skills with confidence vocationally and educationally, as well as at home.

These courses are offered at entry level 2 up to level 1. There are no course fees, but learners will need to pay an annual membership fee of £5.



Digital Skills – an entry level course which will help you to develop digital skills. You will work collaboratively using a range of free apps effectively and become more confident with being safe online. This course is designed to improve your digital skills, to help you get into work, and/or improve your prospects in your current job.

Topics covered include:

- Searching the Internet
- Internet Safety
- Using Free Apps
- Using What's App, Messenger and other Social Media Apps
- Using You Tube
- Sending and Receiving Email
- Structuring Folders
- Using a variety of Creativity Tools – Google Suite, Microsoft 2016 and much, much more!

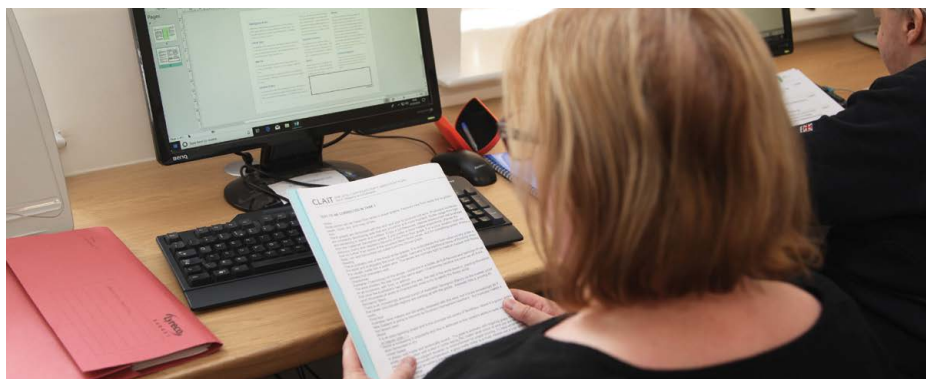
Essential Skills for IT / Work and Life Courses - 36 weeks



Venue	Day	Time
Tredegar Library	Monday	1-3pm
Ebbw Vale LAC	Monday	1-3pm
Ebbw Vale LAC	Tuesday	6-8pm
Brynmawr LAC	Wednesday	2.15-4.15pm
Tredegar Library	Friday	10-12 noon
Cwm Library	Thursday	10am-12.30pm

Digital Skills Courses - 36 weeks

Venue	Day	Time
Tredegar Library	Monday	10-12 noon
Abertillery LAC	Tuesday	10-12 noon
Ebbw Vale LAC	Monday	10-12 noon
Ebbw Vale LAC	Tuesday	1-3pm
Tredegar Library	Wednesday	1-3pm
Brynmawr LAC	Wednesday	12-2pm
Ebbw Vale LAC	Thursday	10-12 noon
Brynmawr LAC	Friday	10-12 noon



ECDL - British Computer Society



ECDL BCS Levels 1, 2 & 3 are designed specifically for those who wish to gain a benchmark qualification in computing, to enable them to develop their ICT skills and enhance their career prospects.

Due to the current Covid -19 situation, this course may be delivered by blended learning.

BCS IT User Certificate

Level 1

This qualification requires 12 credits and a mandatory unit:

Improving Productivity Using IT (3 credits)

Select units from below:

- **Word Processing Software (3 credits)**
- **Spreadsheets Software (3 credits)**
- **Database Software (3 credits)**
- **Presentations Software (3 credits)**

BCS IT User Award

Level 1

This qualification requires 9 credits from the available units:

- **Word Processing Software (3 credits)**
- **Spreadsheets Software (3 credits)**
- **Database Software (3 credits)**
- **Presentations Software (3 credits)**

BCS IT User Certificate

Level 2

This is a progression course from BCS Level 1, in which you can gain a BCS Level 2 Certificate. This qualification requires at least 16 credits and at most 20 credits.

Mandatory Unit: Improving Productivity Using IT (4 credits)

Select Units from the selected units:

- **Word Processing Software (4 credits)**
- **Spreadsheets Software (4 credits)**
- **Database Software (4 credits)**
- **Presentations Software (4 credits)**

BCS IT User Award

Level 2

This qualification requires 12 credits from the available units:

- **Word Processing Software (4 credits)**
- **Spreadsheets Software (4 credits)**
- **Database Software (4 credits)**
- **Presentations Software (4 credits)**

Alternatively, learners can be entered for individual units from level 1 up to level 2.

ECDL Advanced Single Unit Accreditation

Level 3

This qualification requires 6 credits. This progression course allows learners to develop advanced IT user knowledge and skills needed to work productively in a supervisory / managerial role. It is designed for learners who are looking to gain advances, understanding and capability in the use of IT applications.

Available Units:

- **Word Processing Software (6 credits)**
- **Spreadsheet Software (6 credits)**
- **Database Software (6 credits)**
- **Presentation Software (6 credits)**

ECDL Courses - 36 weeks

Venue	Day	Time
Abertillery LAC	Tuesday	1-3pm
Ebbw Vale LAC	Tuesday	10-12 noon
Brynmawr LAC	Tuesday	6.30-8.30pm
Brynmawr LAC	Wednesday	9.30-11.30am
Brynmawr LAC	Wednesday	6.30-8.30pm
Brynmawr LAC	Thursday	6.30-8.30pm
Ebbw Vale LAC	Wednesday	6.30-8.30pm
Tredeggar Library	Wednesday	10-12 noon
Ebbw Vale LAC	Thursday	1-3pm
Ebbw Vale LAC	Thursday	6.30-8.30pm

The cost of ECDL courses is £2 per hour, an annual membership fee of £5, plus exam fees. Concessions on course fees may apply to those on a low income, or in receipt of certain mean tested benefits. Please contact your centre for more information.

ECDL Individual Units

Level 1

These 10 week courses will enable learners to gain separate ECDL units at level 1 – beginning with word processing. Further units will be available in the spring and summer terms. Courses start week beginning 13th September 2021.

Venue	Day	Time
Tredeggar Library	Monday	6-8pm
Abertillery LAC	Friday	10-12 noon

Improve your English and Maths - 36 weeks

Whether you would like to enhance your job prospects, or just improve and update your skills, these courses are for you - suitable for all levels and abilities. There are no course fees, learners just need to pay a £5 annual membership fee. Courses begin week commencing 13th September 2021.

Improve your English

Venue	Day	Time
Brynmawr LAC	Thursday	6-8pm
Brynmawr LAC	Tuesday	6-8pm
Brynmawr LAC	Friday	10.30am-12.30pm
Ebbw Vale LAC	Tuesday	9.30-11.30am
Ebbw Vale LAC	Tuesday	11.30-1.30pm
Ebbw Vale LAC	Friday	9.30-11.30am
Tredeggar Library	Monday	9.30-11.30am
Tredeggar Library	Monday	12-2pm
Abertillery LAC	Daytime	TBC

Improve your Maths

Venue	Day	Time
Abertillery LAC	Wednesday	3-5pm
Ebbw Vale LAC	Tuesday	9.15-11.15am
Ebbw Vale LAC	Friday	9.15-11.15am
Ebbw Vale LAC	Friday	4-6pm
Tredeggar Library	Monday	12-2 pm
Brynmawr LAC	TBC	

English/Communication Skills for Employability - 36 weeks

These free 36 week courses are designed for those who need to improve their skills to enable them to move into employment, improve their prospects in their current job or to prepare for entry into vocational qualifications.

Venue	Day	Time
Brynmawr LAC	Tuesday	6-8pm

Improve your English and Maths, GCSE option - 32 weeks



These courses are designed to prepare you for WJEC GCSE exams in English and maths for the Summer 2022 exam series. Learners will also be required to gain an Agored Cymru qualification at level 1 or 2. Some elements of this course will be delivered remotely, so all learners will need suitable IT equipment and Internet access.

Learners will be assessed prior to enrolment and directed onto the course most suitable for them. Please contact Nicola Smith for more information on pre course assessment **tel 01495 355287**

Email nicola.smith@aneurinleisure.org.uk

In order to complete the course successfully, learners will need to attend a minimum of 80% of sessions and must be committed to spend at least a further 2 hours per week on independent study. Learners wishing to sit the GCSE exam must pay the exam entry fee. For more information please contact Ebbw Vale Learning Action Centre **01495 355300** or Abertillery Learning Action Centre **01495 355585**

Course Title	Venue	Day	Time
English GCSE	Brynmawr LAC	Thursday	5.30-8.30pm
English GCSE	Ebbw Vale LAC	Tuesday	5.30-8.30pm
Maths GCSE - Intermediate	Brynmawr LAC	Wednesday	5.30-8.30pm
Maths GCSE - Intermediate	Ebbw Vale LAC	Wednesday	6-9pm
Maths GCSE - Intermediate	Ebbw Vale LAC	Tuesday	6-9pm
Maths GCSE - Higher	Ebbw Vale LAC	Thursday	6-9pm



Independent Living Skills (ILS) Courses

These are a range of specialised courses, specifically designed for learners with a learning difficulty/disability or those experiencing problems with their mental health.

All courses are taught in small, safe, friendly classes by enthusiastic and experienced tutors. Tutors encourage and support individual learners to work as independently as possible whilst developing a wide range of skills in the chosen subject area and also the wider skills areas of literacy, numeracy and digital. The emphasis is on enjoyment not only in learning new skills but also developing and building on the skills already held, at a pace suitable to each learner. The courses also provide an opportunity to make new friends and develop teamwork and social skills.

Courses start week beginning 13th September and cost £7 per learner per year, plus a small charge for resources where applicable. For more information please contact your local centre.

ILS Essential Skills • Monday 10-12.30pm, Abertillery LAC

This class is suitable for learners who wish to develop their literacy/communication, numeracy and digital skills. The class is small and friendly and learners develop skills suitable to their own personal level. You will also be encouraged to develop independent working skills but also have fun developing wider social skills and teamwork skills.

ILS Art and Craft • Monday 10-1pm and 1.30-3.30pm, Ebbw Vale LAC

These classes are for suitable learners who would like to develop their creative skills in art and crafts. You will advance your creative skills in a variety of art/craft techniques from painting to photography. Learners are encouraged to work as independently as possible and have fun in a small, friendly environment.

ILS Office Skills

Monday 10-12.30pm and Thursday 1-3pm Brynmawr LAC

These are small, friendly classes suitable for learners wishing to improve and develop their communication and office skills whilst using a variety of office equipment. You will develop skills for using the photocopier, laminator, telephone and computer whilst also developing skills in the use of Microsoft packages such as Word, Excel, Power Point and Moviemaker.



ILS Improve your English • Tuesday 9-11.30am

This class is suitable for learners who wish to develop their essentials skills such as literacy/communication. The class is small and friendly and learners develop skills suitable to their own personal level. You will also be encouraged to develop independent working skills but also have fun developing wider social and teamwork skills.

ILS iPads

Monday 1-3pm and Thursday 12.30-2.30pm Brynmawr LAC

These classes are suitable for learners who would like to develop their skills using the iPad and computer. You will learn how to use the iPad in a variety of ways including how to download apps and search the internet. Your skills will be developed in the use of Microsoft packages such as Word, Excel, PowerPoint and Publisher. The class is small and friendly encouraging the development of social/communication skills in a fun environment.

ILS Computers • 10-12 noon Thursday, Brynmawr LAC

This class is suitable for learners who want to learn the basics of using a computer, even if you can't turn it on! The emphasis is on fun and getting to find your way around the basics of using a computer with worrying about making mistakes. You will learn how to create, save and print various documents such as letters, writing stories and designing greeting cards. Alongside developing your skills in using the computer you will also further develop your literacy, communication and numeracy skills in a safe, friendly environment.

ILS Pottery • Tuesday 10-12.30pm and 1-3pm Ebbw Vale LAC

These classes are suitable for learners who wish to learn a new creative skill. You will learn the basics of pottery such as slab work, pinch potting, coiling and glazing as well as developing your skills in teamwork, communications, numeracy, and literacy. You will discuss what to make and design as part of the group at the beginning of each term and then have fun making and glazing the items for you to take home to show your friends and family and to sell at our annual Christmas craft stall.



ILS Dementia Friendly Pottery • Tuesday 3.30-6pm Ebbw Vale LAC

This class is suitable for adults with dementia and their carers/support. You will learn a new skill in a small, safe and friendly environment. The aim is to have fun whilst developing your basic pottery skills such as slab, pinch potting, coiling and glazing. The maintenance of independent living skills is encouraged through teamwork, communications, numeracy and literacy. You will be supported through the designing and development of your own ideas to the completion of a pottery item to take home to show family and friends.

ILS Art • Wednesday 9.30-12noon Ebbw Vale LAC

This class is suitable for learners who would like to develop their creative skills in art. You will develop your creative skills whilst completing a variety of art projects using a variety of art media from pencils, acrylic/watercolour paint, wax/chalk pastels to charcoal. Learners are encouraged to work as independently as possible and have fun in a small, friendly environment.

ILS Pottery Intermediate • Wednesday 12.30-3.30 Ebbw Vale LAC

This class is suitable for learners who wish to build on their pottery skills. You will further develop pottery techniques such as slab work, pinch potting, coiling and glazing as well as developing your skills in teamwork, communications, numeracy, and literacy. You will discuss what to make and design as part of the group at the beginning of each term and then have fun making and glazing the items for you to take home to show your friends and family and to sell at our annual craft stall.



ILS Smartphone and Tablet photography for beginners Wednesday 4-6pm Ebbw Vale LAC

A basic introduction to smartphone/tablet photography. Use your own smartphone and tablet or borrow our centre tablets to develop your skills in taking great photographs. You will learn how to compose photographs and how to use basic camera functions and editing techniques to get the best from your shots in a small friendly environment.

ILS Health & Well-being

Tuesday 2.15-4.45pm Ebbw Vale LAC, Wednesday 2-6pm Brynmawr LAC, Friday 10-1pm Ebbw Vale LAC

This class is suitable for learners who wish to improve their eating habits, fitness and mental health. You will learn to look at packaging on food and drink using the traffic light system, how it's important to maintain a healthy diet which is suitable for your lifestyle and individual needs. As a group we will look at areas to walk and explore too in a friendly and supportive environment.

British Sign Language – Agored Cymru Accredited, 36 weeks



Venue	Day	Time
Ebbw Vale LAC	Wednesday	6-8pm

Course costs are £2 per hour, but concessions may be available to those on a low income or in receipt of certain 'means tested' benefits, plus an annual membership fee of £5.

Courses start week beginning 13th September 2021



English for Speakers of Other Languages (ESOL) 36 weeks



These free 36 week courses are aimed at anyone whose first language is not English, at a range of levels from complete beginners to improvers. All courses contain Citizenship materials, which may lead to a qualification that supports an application to the UK Border Agency for indefinite leave to remain in the UK or for UK Citizenship. Learners must demonstrate a commitment to attend these courses regularly and promptly – failure to do so may result in their place being given to another learner.

These courses are increasingly popular and, if courses are full, learners will be put onto a waiting list until a space becomes available. All learners must pay a £5 annual membership fee.

Venue	Day	Time
Abertillery LAC	Wednesday	10-12 noon
Brynmawr LAC	Wednesday	1-3pm
Ebbw Vale LAC	Wednesday	6-8pm
Ebbw Vale LAC	Thursday	6-8pm

Photography for All - Level 2

Ebbw Vale LAC – Wed 6.30-8.30pm Course starts wc 13th September 2021

This 30 week course is designed for beginners and improvers and will introduce learners to the basics of digital photography. Learners will gain Agored Cymru accreditation of completion of photographic and written work. The cost of the course is £2 per hour and concessions apply for those on a low income, or in receipt of certain means tested benefits.

Please tel 01495 355000 for more information.

Aim Awards Level 2 Counselling - 36 weeks



The AIM Awards Level 2 Certificate in Counselling Skills is designed to provide you, the learner, with an introduction to basic counselling skills. You will develop your knowledge of the counselling profession, looking at the role of professional frameworks/codes of conduct and the core personal qualities that enable competent counsellors.

You must pass a written examination, which will consist of questions that cover the roots of counselling theory and how theory underpins counselling skills. It examines your rudimentary understanding of the three main areas of counselling theory and how they can relate to counselling practice.

You will also begin to develop your practical skills in developing, maintaining and concluding a basic counselling session through role-play, providing you with the skills, knowledge and understanding of practice within the boundaries of an ethical framework.

You are given the opportunity to acquire counselling skills in one of a choice of four contexts and are applicable to a wide variety of helping and supporting roles:

- Introduction to Counselling in the Workplace
- Introduction to Working with Trauma
- Introduction to Working with Grief and Loss
- Introduction to Working with Children and Young People

Is this qualification right for me?

This qualification is suitable for you if you have little or no experience in the subject. It has been designed as the first step in the ladder for professional development for aspiring and practising counsellors. **This qualification does not lead directly to an employed role.**

Venue	Day	Time
Ebbw Vale LAC	Tuesday	6-8.30pm

Aim Awards Level 3 Counselling



The AIM Awards Level 3 Certificate in Counselling enables you, the learner, to work towards becoming a reflective practitioner of counselling by considering theories of human development, self-awareness, supervision and issues of difference and diversity.

You will carry out a role-play, where you will demonstrate your ability to consciously apply a relevant theoretical approach to a presenting situation/context. You are trained and assessed in three roles (counsellor, client and observer). You will then reflect on content learned in your teaching sessions and role plays with the aim of introducing reflective practice.

You are also required to pass a written examination, which will consist of questions that cover a broad range of knowledge and understanding of the three main approaches to counselling and the theorists that underpin most counselling practice. It also enables you to evaluate the advantages and disadvantages of using various approaches to counselling.

Is this qualification right for me?

We recommend that you have achieved the AIM Awards Level 2 Certificate in Counselling Skills, prior to studying this qualification.

Venue	Day	Time	Start date
Ebbw Vale LAC	Thursday	5.30-8.30pm	14th Sept 2021



Some elements of these courses will be delivered remotely, so all learners will need suitable IT equipment and Internet access. Please contact Ebbw Vale Learning Action Centre on **01495 355300** for information on course fees and Aim registration fees - which also covers the cost of the exam.

Level 2 Award in Support Work in Schools - 36 weeks



These courses are accredited by City and Guilds and are suitable for anyone who is interested in working as a teaching assistant, or for those working in schools who wish to gain a formal qualification. There is an extremely high demand for these courses, so potential learners are advised to apply as soon as possible. This course will be delivered using blended learning, so all participants will need access to suitable IT equipment and Internet access.

In order to be accepted onto the level 2 course for September 2021, learners will need to have a Level 2 qualification in English, Communication or Literacy – gained within the last 3 years. If you are unsure, please contact Nicola Smith whose details are given below. The cost of the course is £2 per hour, plus City & Guilds registration fee – concessions may apply.

If you would like any further information on entry requirements, costs etc, or wish to apply for a place on this course, please contact Nicola Smith on 01495 355287 or email nicola.smith@aneurinleisure.org.uk



Venue	Day	Time
Brynmawr LAC	Wednesday	6-8.30pm

Cake Decoration Courses

These courses are suitable for those who wish to gain new skills, but don't want to gain a qualification. They run for a maximum of 36 weeks – made up of 6 x 6 week courses and are subject to having a minimum of 8 learners per class. The course fees are £2 per hour, payable in advance at £24 per 6 week course, but concessions may apply for those on a low income or in receipt of certain means tested benefits. Learners are also required to pay a membership fee of £5 per year, which is used to purchase resources for centre users.

The course tutor is Emma Phillips, an extremely talented multi award winning local businesswoman. Learners will be required to provide some of their own materials, but these will be provided for the first session and learners will be told what they need to bring for the rest of the course.



Venue	Day	Time
Ebbw Vale LAC	Tuesday beginners	6.30-8.30pm
Ebbw Vale LAC	Wednesday	10-12 noon
Ebbw Vale LAC	Thursday	6.30-8.30pm

Cooking with your Child – online course via Zoom

Thursday 4.15-6.15 pm Starts on 16th Sept 2021 for 10 weeks

Nurture Equip Thrive Project

The aim of the project is to support **employed** you to improve and manage your health situation. Topics include stress management, plus coping with stress and anxiety.

The support offered will:

- Give you the skills to become competent at completing job applications writing and updating CV's and have good interview techniques
- Encourage you to actively take part in job search and any other activities that would benefit you to improve your health or job market situation
- Support you to improve and manage your health situation

Eligibility Criteria

- Live in Blaenau Gwent
- Are of working age
- Employed 1 or more hours per week
- Have the right to live and work in the U.K



The Nurture Equip Thrive Project is part funded by European Social Fund

**For more information please contact:
Caroline, Michelle or Teresa on 01495 355257 / 355258
Or email: teresa.davies@aneurinleisure.org.uk**

Groups and Clubs

Aneurin Leisure hosts a wide variety of groups and clubs at Ebbw Vale, Abertillery and Brynmawr LACs, as well as at Tredegar Library. These groups include: **Stained Glass, Yoga, Art and Craft, sewing, knitting, decoupage, History Society, gentle exercise** and much more...

For more information, contact your local Learning Action Centre or Library.





dysgucymraeg.cymru
learnwelsh.cymru
Gwent

Dysgwch Gymraeg gyda ni! Learn Welsh with us!

Whether you're a complete beginner or continuing to learn Welsh, courses are available throughout Blaenau Gwent at various locations and convenient times.

We're here to help all Welsh learners in the Blaenau Gwent area, whatever your level.

Contact us for more information, to secure your place on one of our courses or to receive a copy of our latest Prospectus.

**How to get in touch.
Sut i gysylltu â ni.**

Os dych chi'n ddechreuwr pur neu'n parhau gyda'ch dysgu, mae cyrsiau ar gael ar draws Blaenau Gwent mewn lleoliadau gwahanol ac ar amseroedd cyfleus.

Dyn ni yma i helpu pob dysgwr Cymraeg yn ardal Blaenau Gwent, beth bynnag yw'ch lefel.

Cysylltwch â ni am ragor o fanylion, i sicrhau eich lle neu dderbyn copi o'n Prosectws diweddaraf.

Website

www.dysgucymraeg.cymru/gwent
www.learnwelsh.cymru/gwent

Call us

01495 333710

E-mail us

welsh@coleggwent.ac.uk



Dysgu
Learn



Room Hire at Learning Action Centres

There are rooms of various sizes, available for hire at Abertillery, Brynmawr and Ebbw Vale Learning Action Centres. These rooms are well resourced, light and airy and are suitable for courses, conferences and a wide range of community events and activities.

- Free Wi-Fi
- IT equipment
- Tea and Coffee available
- Reasonable rates



Contact: Abertillery LAC 01495 355895



Contact: Brynmawr LAC
01495 355595



Contact: Ebbw Vale LAC
01495 355300

General Information

Enrolment

Please contact your local Learning Action Centre for information regarding enrolment. There may be changes to the normal enrolment process due to the ongoing Covid-19 situation and enrolment will be by appointment only. Updated information will be posted on social media and the Aneurin Leisure website.

Courses

All course information is correct at the time of going to print, but may be subject to change. Progression routes advertised are subject to continued Welsh Government funding. Short courses may be planned during the academic year, check out our website www.aneurinleisure.org.uk for up to date information. Aneurin Leisure reserves the right to substitute a tutor if necessary.

Courses will run subject to a minimum number of learners enrolling. However, this number will be lower than in previous years due to the need to comply with Welsh Government guidelines on social distancing. If the minimum number of learners is not met:

- The course may be cancelled prior to the start and learners who have enrolled will be given a full refund.
- The course may run for the first 3 weeks, to see if the target number can be reached. If not, learners will be offered a full refund or given the opportunity to transfer to an alternative course.



Learner Charter

Aneurin Leisure Adult Community Learning is committed to ensuring that all learners receive the highest quality service. This includes the quality of teaching, the comfort and safety of students and the equipment provided. If you are unhappy with any aspect of the service provided to you, please contact Karen Bennett, Adult Community Learning Manager
01495 355301
karen.bennett@aneurinleisure.org.uk

Learner Support

If you would like to improve your English or maths, or would like to develop your study skills, please contact Nicola Smith on **01495 355287**.

Or email nicola.smith@aneurinleisure.org.uk for details of the free help available.

Emergency Class Closure

In the event of a class being closed, due to bad weather tutor illness or Covid-19 restrictions, every effort will be made to inform students. Text message is our preferred method of contacting learners, so please ensure that you put your mobile number onto your enrolment form. Also, please ensure that you keep the centre updated of any changes to your contact details as soon as possible.

GDPR

Aneurin Leisure will process your personal data in accordance with Data Protection Legislation. For more information and access to privacy notices outlining how we handle your personal data, please go to the Privacy Policy section of the Aneurin Leisure website at www.aneurinleisure.org.uk

Membership Fee

All learners pay an annual Membership Fee of £5 for each centre that they attend. These funds are used to buy resources for centre users.

Aneurin Leisure:

- Reserve the right to refuse any learner and to dismiss any learner behaving in an improper manner
- Do not accept responsibility for the loss or damage of learners' property. Learners must take reasonable care for any personal items, which they may bring to class, arrange suitable insurance for any personal items and are advised not to leave belongings unattended.

Covid-19

During the ongoing Covid-19 situation we are working hard to ensure that we can provide a safe environment for our learners and centre users. Please be assured that your safety and wellbeing are paramount. However, we expect all centre users to abide by Welsh Government guidelines for the health and safety of themselves and others.

Blaenau Gwent Libraries Something for Everyone!

Blaenau Gwent Libraries are committed to services that support your learning. Whether you are taking up a new hobby, finding out about computers, or gaining a formal qualification. We provide a range of books and activities to help you achieve your ambitions. Our libraries are accessible community venues that are open to everyone.

- Free to join
- Space to study in friendly, relaxed surroundings
- Free computer use
- Free eBook service, which includes a range of 25,000 titles
- Free WI-FI
- Wi-Fi printing at Ebbw Vale and Abertillery Libraries
- Printing, scanning and photocopying services
- Free help with your children's homework
- Help with Job-searching and CVs
- One to one basic computer support
- Adult Literacy help
- Free family history resources
- Free on-line resources
- Free request service (books available to order from all Welsh Libraries)
- Signposting and partnership working
- Health and Wellbeing support
- Wide range of Children's services including Storytimes and Under 5's sessions
- Reading Groups
- Knit and Natter groups
- Local history support
- Enquiries on all subjects
- Home delivery service

Free E-books and E-Audio Service – "BorrowBox"



For more information contact your local library

Tredegar	01495 357869	Blaina	01495 290312
Brynmawr	01495 357743	Abertillery	01495 355646
Ebbw Vale	01495 355055	Cwm	01495 370454

Or email: blaenauwentlibraries@aneurinleisure.org.uk

Bridges into Work 2

The Bridges into Work 2 project provides intensive training and mentoring to people in Blaenau Gwent who are over 25 years of age and not working. The aim of the project is to support local people to gain the skills, confidence and experience to help them move towards employment.



Voluntary Work Experience

Improve skills, qualifications and CVs with voluntary work experience and gain an up-to-date reference.

- Office Administration
- Hospitality
- Care
- Teaching Assistants
- Leisure
- Retail
- Hair and Beauty
- Outdoor Work

Tailored employment packages available.



Free Courses & Qualifications

Some online training available

- ECDL (MS Office 2016)
- Computers Don't Bite
- Digital Communication
- Customer Service
- Confidence Building
- Anxiety Management
- Food Safety
- Lift Truck Training
- Health and Safety
- Improve your English and Maths
- First Aid
- SIA
- CSCS
- ESOL Qualifications and chatter group



Universal Credit Hubs

- Help with UC accounts
- CVs
- completing applications
- job search
- digital support
- interview preparation (available online)



Who can receive support?

Eligibility rules:

- 25 or over
- Not working
- Live in a non-Communities First area



Bridges into Work 2
Blaenau Gwent

For more information contact Bridges into Work 2
01495 35299/356019 or 07398 546437 Biw2@aneurinleisure.org.uk

Bridges into Work 2 is part
financed by European Social Fund



Working Skills for Adults 2

The Working Skills for Adults 2 project provides **FREE** qualifications and training, to **people in Blaenau Gwent who are working**.

The aim of the project is to support local people to gain the skills to help them progress in a current job role or to support a career change.

FREE Courses & Qualifications

- First Aid
- Food Hygiene
- Health & Safety in A construction Environment (CSCS)
- Introduction to Teaching Assistant
- Introduction to care
- Safeguarding Children & Young People
- Customer Services
- Personal Licence (Alcohol)
- Health & Safety in The Workplace
- Manual Handling
- C.O.S.H.H (Control of Substances Hazardous to Health)
- ... and lots more!



Additional support available:

- CV Writing
- Interview skills
- Job search
- Job applications

Who can receive support?

Eligibility rules:

- Working more than 1hr per week
- Living in Blaenau Gwent
- Hold level 2 or below qualifications

**For more information contact Working Skills For Adults 2 on 01495 354703/01495 354705
mobile: 07587 256510
wsfa2@aneurinleisure.org.uk**



Find us on
Facebook

Working Skills For Adults 2
Blaenau Gwent

Working Skills for Adults



Sgiliau Gwaith i Oedolion



Working Skills For Adults 2 is part financed by European Social Fund

Be fit and healthy from the comfort of your own home.

Aneurin leisure
Improving community life



Aneurin Leisure Sports Centres offer a wide range of membership options to help you improve your overall level of fitness.

Becoming a member has never been easier with our new Join@Home facility. Simply log on to bglife.co.uk or download the Aneurin Leisure app and follow the simple instructions to start your wellbeing journey.

Our gyms have been fully refurbished and with full digital connectivity you can achieve your fitness goals wherever you go.



life. @DVAGYM

Improving community life by delivering leisure, learning and cultural services across Blaenau Gwent.

We are a community-focused organisation with the main objective of making a positive impact on the lives of people across Blaenau Gwent.

You can enjoy our services through the sports and leisure centres, exploring the historic and natural beauty of Bedwelly House and Park and Parc Bryn Bach and develop yourself through the libraries and adult community learning.

We are a not-for-profit organisation which means that every time you use one of our venues or services the money you spend is reinvested into our organisation enabling us to continue to improve the facilities and help enhance and improve the community in which we live.

To find out more, log on to aneurinleisure.org.uk or follow us on Facebook, Twitter and Instagram.

