



2022 GRANTMAKING GUIDEBOOK

United Way
of Central Indiana



TABLE OF CONTENTS

Page 1

Grantmaking Values

Page 2

Data Collection and Metrics

Page 3

Accredited United Way Community Partners

Page 4

Grantmaking Process

Page 6

Basic Needs

Page 7

Family Opportunity

Pages 8-9

Social Innovation

Page 10

Sector Support

Page 11

**United Way's Community Impact
Leadership Team**



GRANTMAKING VALUES

Every application for funding is reviewed using an objective rubric and scored by a dedicated team of board, staff and community volunteers. These scores are the starting point of deliberation that looks at each application and across the portfolio of investments to ensure we're upholding United Way's grantmaking values.

These values guide our decision-making and are reflective of our priorities and aspirations.

Inclusivity

Ensuring equity and diversity in the availability and accessibility of resources across the UWCI service area; diverse perspectives and needs are intentionally sought and reflected in all aspects of the organization's work.

Transparency

Presenting a clear, honest representation of the organization and its work; operating with a high level of accountability; addressing challenges directly when they arise.

Community

Listening to the community voice, serving the community need, and responding to community assets and opportunities.

Impact

Creating positive outcomes through innovative, data driven programming; adapting and responding to changing environments; continuously learning, growing and improving.

Partnership

Partnering with community and systems level stakeholders to achieve greater impact, scale and sustain efforts, and strengthen or expand services.





DATA COLLECTION AND METRICS

Data collection is a crucial part of each application and the ongoing evaluation of every United Way Impact Fund grant.

Quarterly, semi-annual and annual quantitative and qualitative reporting is required on the metrics for each program's focus area to demonstrate efficiency, efficacy, and measurable progress toward stated outcomes. Not only does the collection and ongoing evaluation of data benefit each organization in achieving high-quality collective impact for the communities and people we serve, but it also represents an important measure for stakeholders who continue to invest in our work.

United Way's commitment to data and research is rooted much deeper than grant compliance. We believe it's the best way to build our collective knowledge around who's being served, what strategies are the most effective, and how we can better support more individuals and families to attain social and economic mobility. A deep understanding and sharing of data is critical to identify potential gaps in our community's human services network and provide technical assistance to nonprofits as they continue to build their capacity to collect data and learn from their reports. We look forward to having conversations around shared learnings across the sector based on the data and analysis from these funds.

ACCREDITED UNITED WAY COMMUNITY PARTNERS

With the exception of the Social Innovation Fund, United Way's grantmaking opportunities are only eligible for application by community-based organizations already possessing accreditation status from United Way of Central Indiana.

United Way accredits community-based organizations in human services who are making an impact in our focus areas: basic needs (housing, food, transportation and health), family opportunity (educational success, workforce development and economic assets, social capital, and health and well-being), and social innovation.

All accredited organizations must be legally authorized not-for-profit agencies incorporated in the State of Indiana or a not-for-profit agency with its own governing or advisory board organized as an identified part of another organization which is incorporated in the State of Indiana.

The organization must also conform to all applicable government requirements or regulations including, but not limited to: maintaining corporate formalities (i.e., holding an annual meeting, keeping minutes for all corporate meetings), filing corporate documents in a timely manner (i.e., 990 Form, payroll taxes), abiding by current legislation and regulations concerning non-discrimination in hiring employees and serving clients, facilities accessibility to persons with disabilities, and health and safety standards.

United Way opens its accreditation application for new organizations on an annual basis in the fall. Applications are prioritized based on gaps in geography and gaps in services provided across Central Indiana. A team of volunteer leaders, board members and United Way staff work together to evaluate each accredited partner's organizational strength, responsiveness to community need, commitment to diversity, equity and inclusion, financial health, community engagement and employment practices, and their alignment with United Way impact areas and strategies. A team of volunteer leaders, board members and United Way staff work together to evaluate each accredited partner's organizational strength, responsiveness to community need, commitment to diversity, equity and inclusion, financial health, community engagement and employment practices, and their alignment with United Way impact areas and strategies.

United Way of Central Indiana is currently proud to partner with 91 accredited community-based organizations across Boone, Hamilton, Hancock, Hendricks, Marion, Morgan and Putnam counties. To see a full list and learn more about upcoming accreditation opportunities visit uwci.org

GRANTMAKING PROCESS

Letter of Intent Requests (if required, currently planned for Social Innovation Fund)

Invitations Extended (only for grants requiring a letter of intent process)

Application Period Opens

Application Information Sessions

Applications Submitted

Committee Workgroup Review

United Way of Central Indiana Executive Committee Approval

Awards Announced

Contracts Executed and Payments Begin





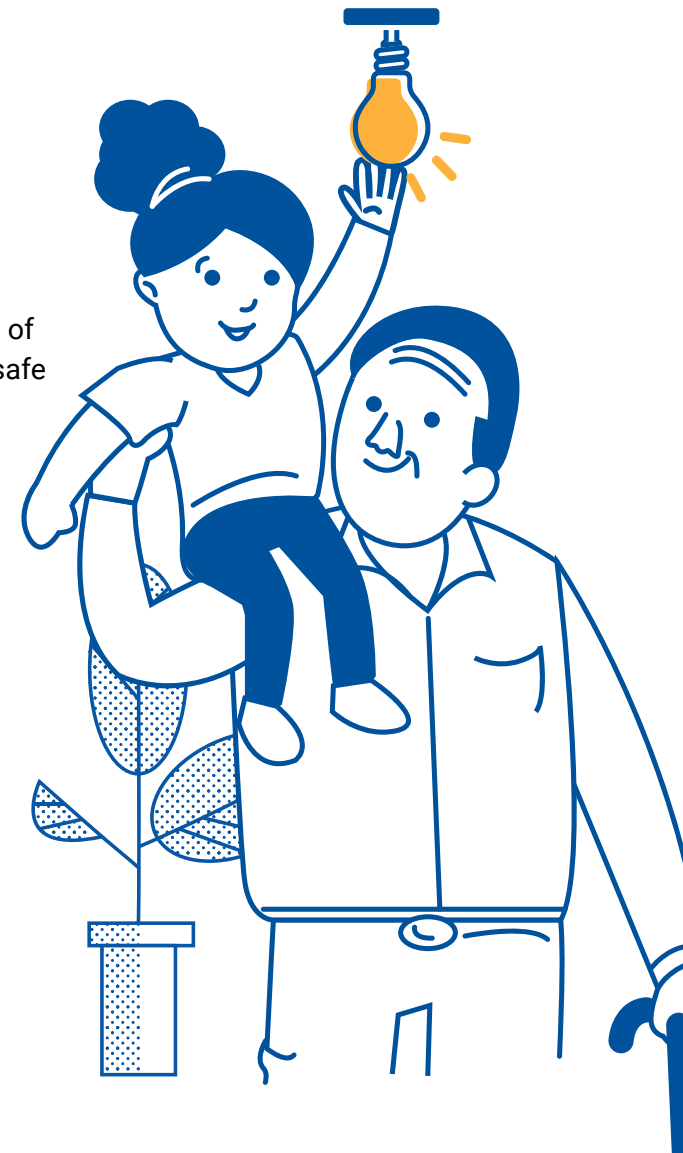
United Way is a social impact organization dedicated to fighting for the education, financial stability, health and basic needs of every person in our community.

BASIC NEEDS

Serving our neighbor's basic needs is at the heart of United Way's work. More than 100 years ago, United Way was created to organize support for those who were hungry, sick, disabled and vulnerable to crisis. Even before COVID-19 struck, more than 220,000 households in our community saw their basic needs in critically short supply or non-existent. To fully recover and rebound from the health and economic effects of the pandemic, it's essential to make certain our most vulnerable neighbors have access to healthy food, safe housing, quality healthcare and transportation when finding themselves in a crisis situation.

- Only organizations accredited by United Way of Central Indiana are eligible to apply for Basic Needs funding in 2022.
- Grants are awarded in the range of \$10,000 to \$500,000 per organization that provides services in alignment with United Way's focus areas and metrics.
- Funding commitments will be for one year – July 1, 2022 to June 30, 2023.
- Funds may be requested for existing services, new services or to expand existing services.
- While reporting on specific outcomes will be required, funds will be unrestricted and may be used for general operating support.

The Basic Needs Fund invests in community-based organizations who seek to provide the essentials to our neighbors struggling to make ends meet by supporting key goals in the following five focus areas:



1. Housing

2. Food

3. Health

4. Transportation

5. Systems-Level Improvements

Application Period Opens	February 25, 2022
Application Information Sessions	March 1, 2022
Virtual Office Hours	March 11 & March 14, 2022 (2pm – 5pm)
Applications Submitted	March 28, 2022 (5pm)
Committee Workgroup Review	May 2022
Awards Announced	Mid-June 2022
Contracts Executed and Payments Begin	July 1, 2022



Mary Jones
Senior Director, Basic Needs
mary.jones@uwci.org



[Click here for Basic Needs Reporting Metrics and Definitions](#)

FAMILY OPPORTUNITY

The concept of intergenerational economic mobility lies at the heart of the American dream. Our national identity is based on the notion that the circumstance into which one is born should not determine one's prospects for the future, and that, by having access to paths of opportunity, each subsequent generation can do better than the last. Two-generation models target children and their caregivers/parents in low-income families in hopes of ending the cycle of poverty.

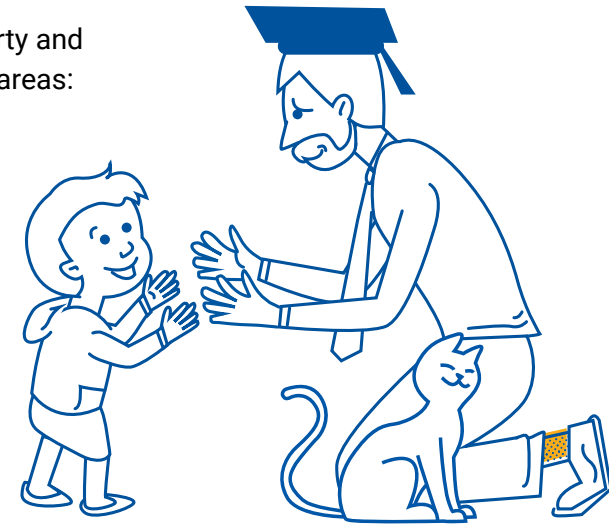
The Family Opportunity Fund invests in accredited community-based organizations who have, or develop, programming that improves the education, financial stability and well-being of the whole family, providing pathways for their success and improved quality of life.

- Only organizations accredited by United Way of Central Indiana are eligible to apply for Family Opportunity funding in 2022.
- Grants are awarded in the range of \$75,000 to \$600,000 per organization that provides services in alignment with United Way's focus areas and metrics.
- Funding commitments will be for one year – October 1, 2022 to September 31, 2023.
- Funds may be requested for existing programs, new programs or to expand existing programs.
- While reporting on specific outcomes will be required, funds will be unrestricted and may be used for general operating support.

The Family Opportunity Fund invests in community-based organizations who seek to lift families out of poverty and ALICE by integrating services for all members in a household to support key goals of the family in five focus areas:

1. **Educational Success**
2. **Workforce Development and Economic Assets**
3. **Social Capital**
4. **Health and Well-Being**
5. **Systems-Level Improvements**

Application Period Opens	May 6, 2022
Application Information Sessions	May 11, 2022
Virtual Office Hours	May 16 – June 1, 2022
Applications Submitted	June 3, 2022 (5pm)
Committee Workgroup Review	July 2022
Awards Announced	August 17, 2022
Contracts Executed and Payments Begin	October 1, 2022



Shannon Jenkins
Senior Director, Family Opportunity
shannon.jenkins@uwci.org

SOCIAL INNOVATION

To better support and empower those in our community who are struggling to make ends meet, the Social Innovation Fund invests in testing of new ideas, approaches, programs and/or projects with the potential to deliver measurable and scalable impact on our community. United Way looks to accelerate the cycle of innovation in our sector through the testing of promising practices that can improve the efficiency and/or effectiveness of our service delivery and outcomes.

To attack economic instability at its core, the time is now to be bold in our thinking, strategy, collaborations, and solutions. The Social Innovation Fund establishes an opportunity to capture the best, brightest, and most innovative approaches to combat poverty in our community. Successful Social Innovation projects are those that support equity, and strongly encourage ideas that lead to coalition building and community collaboration/partnership.

- Any registered 501c3 located in Boone, Hamilton, Hancock, Hendricks, Marion, Morgan and Putnam counties is eligible to apply for Social Innovation funding in 2022.
- Grants are awarded in the range of \$25,000 to \$125,000 per organization that provides services in alignment with United Way's focus areas and metrics.
- Funding commitments will be for one year -- January 1, 2023 to December 31, 2023.
- Funds may be requested for existing programs, new programs or to expand existing programs.
- While reporting on specific outcomes will be required, funds will be unrestricted and may be used for general operating support.

The Social Innovation Fund's focus on new ideas and innovative practices are still grounded in achieving long-term outcomes in the focus areas for basic and needs and family opportunity. Social Innovation grant recipients must help engineer measurable upward mobility with Central Indiana families and residents in poverty in the following areas:



Jonathan Jones
Senior Director, Social Innovation
jonathan.jones@uwci.org

1. Housing
2. Food
3. Health
4. Transportation
5. Educational Success
6. Workforce Development and Economic Assets
7. Social Capital
8. Health and Well-being
9. Systems-Level Improvements

Letter of Intent Opens	July 7, 2022
Application Information Sessions	July 11, 2022
Letter of Intent Submitted	July 27, 2022 (5pm)
Invitations Extended / Application Period Open	August 22, 2022
Applications Submitted	September 12, 2022 (5pm)
Committee Workgroup Review	October 2022
Awards Announced	November 16, 2022
Contracts Executed and Payments Begin	January 1, 2023



[Click here for Social Innovation Reporting Metrics and Definitions](#)



SECTOR SUPPORT

United Way is proud to partner with a powerful network of community-based organizations tackling the most complex issues facing Central Indiana. We are grateful for support from Lilly Endowment Inc. and others to make this work possible. United Way believes supporting the network through capacity building, infrastructure investments, leadership development and technical assistance enables organizations to develop additional competencies, enhance skills, and work toward sustainability. A stronger human service sector makes for greater long-term impact and improved quality of life across our community. We are pleased to announce that, beginning in 2022, all organizations accredited by United Way are eligible for this funding.

Capacity Building Fund – United Way of Central Indiana provides grants to support long-term comprehensive capacity-building intervention. These investments will be made in direct response to an organizational assessment and/or clear description of the organizational problem to be solved.

2022 Application dates: Rolling

Capital Projects Fund – United Way of Central Indiana invests in our partners' capital improvements to enhance the delivery of human service programs. Grants are provided to access technical assistance necessary to successfully plan and execute complicated projects as well as for a significant portion of project costs, enabling organizations to leverage other community support through matching funding partnerships.

2022 Application dates: March 4th, April 25th, June 27th, September 2nd, October 14th

Contingency Funds – United Way of Central Indiana provides one-time grants to help community-based organizations respond to emergencies, unavoidable shortfalls, or to provide interim funding that is a part of an overall long-term financial stabilization strategy.

2022 Application dates: Rolling

Facilities Maintenance Fund – United Way of Central Indiana provides funding assistance for major repairs required to keep facilities well maintained and in compliance with all ADA requirements. Grants are available for planned replacement of major facility components that have reached their useful life, as well as totally unanticipated emergency repair needs required to avoid an immediate interruption in an organization's ability to deliver programs.

2022 Application dates: March 18th, May 6th, July 11th, September 9th

Technology Fund – United Way of Central Indiana provides funding assistance to help improve the technological infrastructure and operational efficiency of partner organizations. Grants are available for technical assistance to help assess an organization's priority needs for improvements in technology as well as assistance with the cost of project implementation.

2022 Application dates: March 31st, June 6th, August 29th, November 14th

Human Service Professional Renewal Program – United Way of Central Indiana invests in hard-working, dedicated human services professionals through individually designed plans for professional and personal renewal. This program provides opportunities to reinvigorate professionals so they can bring fresh ideas and energy to the human care business.

2022 Application dates: May 13, 2022

UNITED WAY'S COMMUNITY IMPACT LEADERSHIP TEAM



Sara VanSlambrook
Chief Community Impact Officer
sara.vanslambrook@uwci.org



Denise Luster
Vice President of Impact Research and Analytics
denise.luster@uwci.org



Shannon Jenkins
Senior Director, Family Opportunity
shannon.jenkins@uwci.org



Mary Jones
Senior Director, Basic Needs
mary.jones@uwci.org



Jonathan Jones
Senior Director, Social Innovation
jonathan.jones@uwci.org



Ashlee Weaver
Senior Director of Community
& Capacity Building
ashlee.weaver@uwci.org

**EVERY PERSON
HAS A PURPOSE.**

United Way
of Central Indiana



uwci.org
2955 N. Meridian Street
Suite 300
Indianapolis, IN 46208