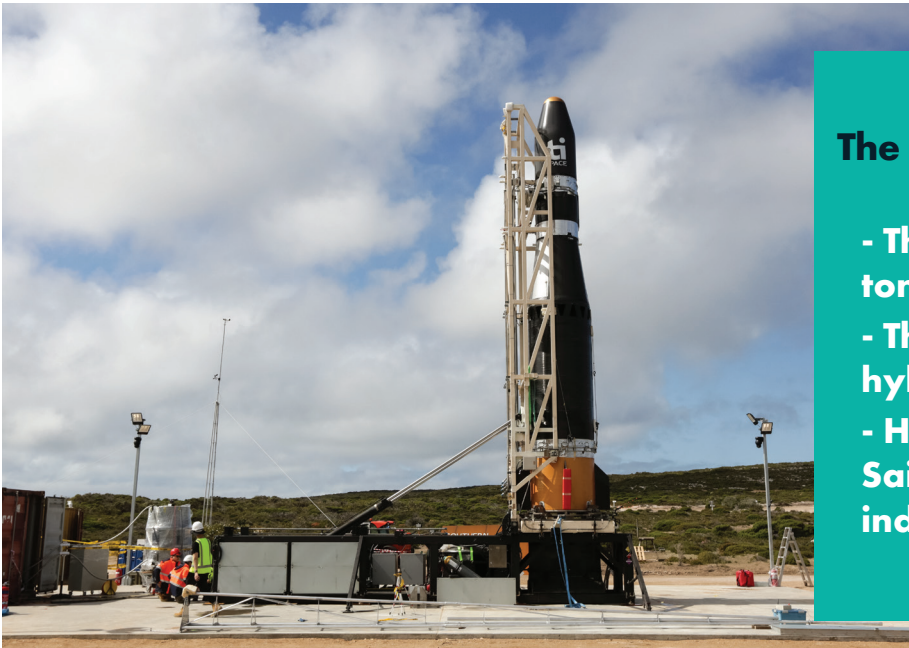


## Southern Launch is preparing to launch TiSPACE's Hapith I rocket for its maiden test flight from the Whalers Way Orbital Launch Complex.



### The Hapith I Rocket Overview:

- The 2 stage rocket weighs 3 tonne and stands at 10m tall
- The engine uses TiSPACE's hybrid propulsion technology
- Hapith means flying squirrel in Saisiyat, a Taiwanese indigenous language

### The Mission Objective

The test launch campaign is being conducted by Southern Launch in support of the major development for the proposed permanent launch complex.

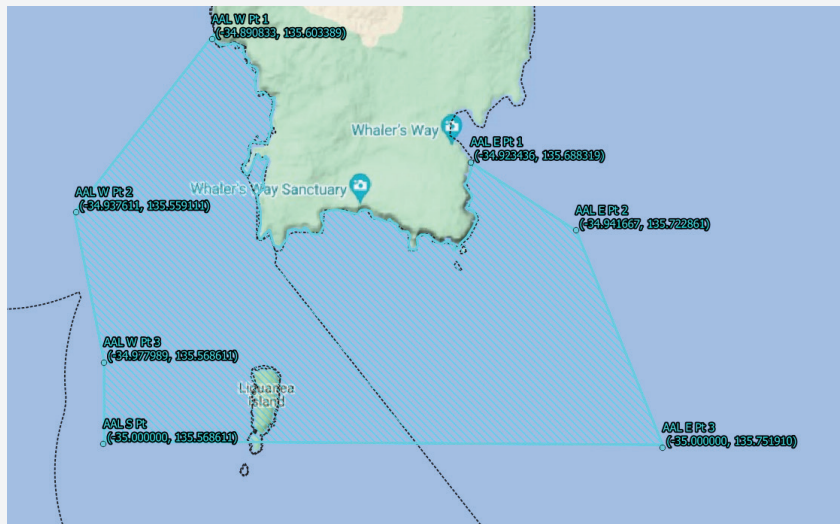
TiSPACE will be testing their hybrid rocket technology - a world first!



# Exclusion Zone

No public will have access to the Whalers Way Orbital Launch Complex during the Launch Window. The maritime exclusion zone (below in blue, and described by the points indicated) will be enforced prior to launch.

Notification of enforcement will be broadcasted on Channels 16 and 81.

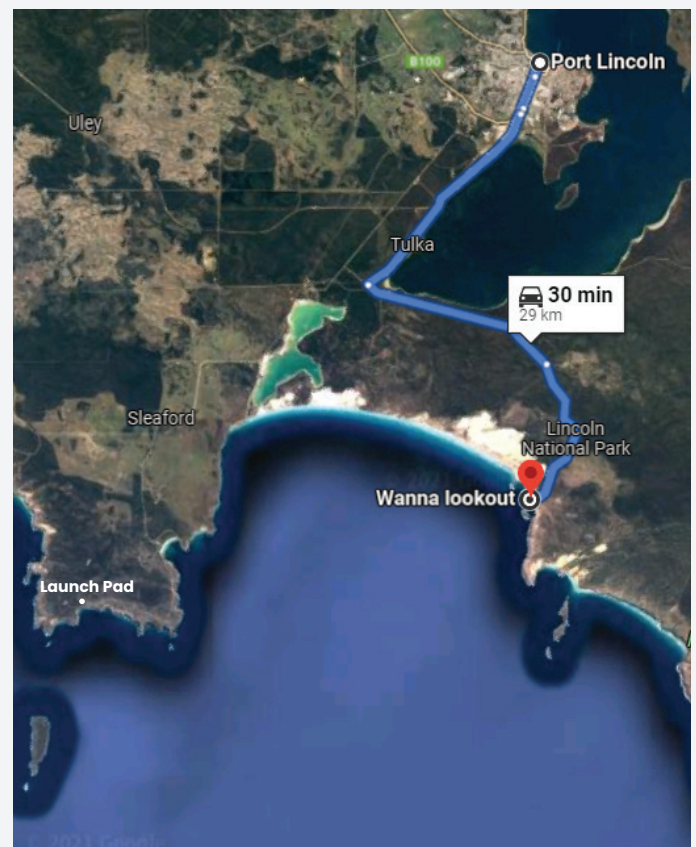


# Public Viewing

There will be no official viewing area for the general public during the test launch campaign. Due to operational and safety requirements Whalers Way will be closed to the public during the Launch Window.

If you are interested in viewing the launch, the best opportunity to view will be from the Wanna lookout, located across the bay from the Whalers Way Orbital Launch Complex.

The Wanna Lookout is located on Wanna Rd, Lincoln National Park, South Australia. It is approximately a 30 minute drive from Port Lincoln.



Want to know more? Follow us @SouthernLaunch