



Spring has sprung!

We are ever so pleased to have some finer weather - it makes our training work at Hearing Dogs that much easier. The lighter evenings are a big plus too, allowing us an extra bit of day to get the work done.

Since our last newsletter lots has been happening and we are so pleased to share our new partnerships.

Trix and her recipient Nicola have recently moved house to a property with a wonderful fenced garden across the road from a dog friendly park in central Hamilton. Trix gets to ride to work each day on the bus to Chartwell Library, a routine that she has settled into well and is known as the four-legged member of the library staff. Trix has a great sense of adventure, enjoys being a busy hearing dog in a busy place and has adapted to urban life extremely well.

Pearl has been placed with her recipient Barbara right here in New Plymouth. Pearl is currently Barbara's companion dog providing sound work assistance at home as well as peace of mind and comfort. Pearl has known Barbara since she was a baby so their bond is very strong and it is lovely to see their working partnership blossom.

Scout is currently living his best life with his recipient Mary in beautiful Moeraki. Scout is an ace at alerting to sounds and has filled a dog shaped hole in Mary's heart since the loss of her previous Hearing Dog Daisy. Scout is Mary's companion dog providing her with much needed emotional support and security.

Follow us on social media for Hearing Dogs news and updates. Thank you for following our journey, being a part of the Hearing Dogs community and supporting us. We couldn't do it without you!



Nicola & Trix



Barbara & Pearl



Mary & Scout

Hearing Dogs New Zealand
Making Connections since 1998



PUPPIES IN SOCIALISING



Fizz

At almost 8 months of age, Fizz is our next puppy coming into training. A wiry haired young Schnoodle and a bit of a Hairy Maclary look alike, Fizz is currently enjoying living with his puppy raiser Chantelle.



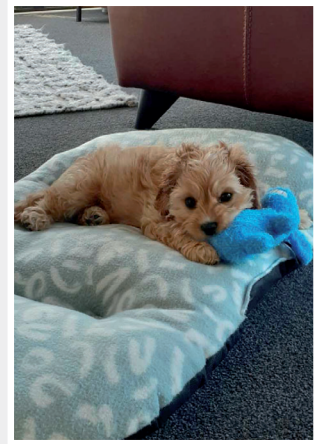
Lacey

Lacey our little gold Cavoodle girl is already showing a real aptitude for quick learning and problem solving. Lacey currently lives with Shirley and Colin who have raised hearing dog puppies regularly over the last 20 years.



Purina

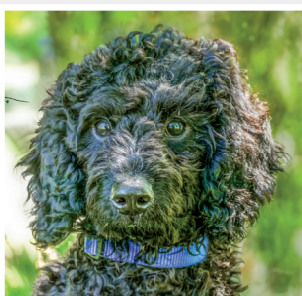
Hearing Dog Darby's half-sister Purina is a black & white Cavoodle - ball of energy and certainly keeps her puppy raiser Mary on her toes. It'll be great to see all that energy transfer to the puppy, is just the best game ever.



Ardie

A robust little Cavoodle boy, Ardie is our newest puppy out in the community. At 11 weeks old and almost 3.5kgs, Ardie is a confident little chap who likes nothing better than playing with a soccer ball in the garden with his puppy raiser Shari.

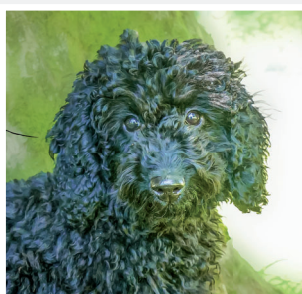
HEARING DOGS IN TRAINING



West



Vespa



Lucus

West, Vespa and Lucus are all well into the Hearing Dogs training program. Learning their sound work in our simulated house on site at the National training center in New Plymouth. They have been heading out with their trainers into public to learn their public access work and enjoying life with socialisers on the weekends.



Super STAR puppy raiser Shirley





NEW HEARING DOGS CAR!!!

We are absolutely thrilled to share the exciting news that Hearing Dogs has a new car!!!

Thanks to the exceptionally generous support from the Four Winds Foundation, Hearing Dogs NZ is now the proud owner of a fantastic new car, which represents a monumental milestone for our organization.

This remarkable addition to our resources will undoubtedly serve as a game-changer for our day-to-day operations, enhancing our overall effectiveness and efficiency in fulfilling our mission. The impact of this generous contribution cannot be overstated, and it reinforces the invaluable role that each and every one of our supporters plays in enabling us to continue our work.



A big thank you to the Acorn Foundation for your support of our work in the Western Bay of Plenty. Your contribution makes a significant difference, and we're deeply grateful for your partnership.



Follow us on Social Media for update pics!



A heartfelt thank you to the Aotea Gaming Trust for your generous donation towards our hearing dog trainers' wages. Your support is instrumental in our mission, and we truly appreciate your commitment to our cause.



Exciting news! We're getting our office furniture updated, all thanks to the generous support of the Pelorus Trust. Your contribution is helping us create a more comfortable and productive workspace.



Can you help?



Yes, I would like to support Hearing Dogs NZ

Tick to receive emails from Hearing Dogs NZ

Name

Address

Postcode

Email

Yes, I would like to make a one off donation

Amount

\$

Yes, I would like to sponsor a puppy monthly

Amount

\$

We will send you a Puppy Sponsorship pack.

How would you like to donate?

Direct Debit Hearing Dogs, Bank Account # 12 3026 0086096 00

Credit card Visa Mastercard

Card No.

Name

Expiry

Signature

TICK for receipt

Donations of \$5 or more are tax deductible. Receipts can be sent upon request.

Via our Website?

Scan the QR Code to donate directly through our website

Get Involved!

Scan QR Code

To find out how you can get involved with Hearing Dogs.



@hearingdogsNZ

Follow us on Facebook for the latest Hearing Dogs happenings.

PUPPY SPONSORSHIP

Sponsoring a puppy can change a deaf person's life!

Deafness does not just affect a person's hearing. It is an invisible disability that totally isolates people from others. By sponsoring a puppy you will help a deaf person to no longer feel isolated and alone.

These dogs become not only their ears but their best friend too.

Follow the journey from a cute puppy to a life-changing hearing dog.

Email us to find out more:
info@hearingdogs.org.nz

THANK YOU TO OUR SPONSORS



Lions Clubs New Zealand
Kia Manaaki | We Serve



AOTEAROA
GAMING
TRUST



Eastern & Central
COMMUNITY
TRUST



Listen Up! is the official newsletter of Hearing Dogs NZ Charitable Trust

National Training Centre: 7 Hydro Road, RD1, New Plymouth | Postal Address: PO Box 8117, New Plymouth 4342

Phone: (06) 769 5000 | Email: info@hearingdogs.org.nz | www.hearingdogs.org.nz

