



### TECH RIM IS THE ONE!

At Tech Rim Standards we understand and appreciate the value of your business. That is why we have made it our mission to provide you with timely delivery of standardized componentry, and thousands of solution based products at very affordable prices.

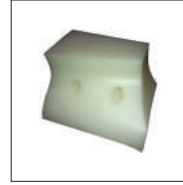
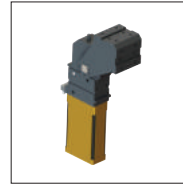
In addition to our standard offerings, we design and manufacture high quality production parts, as well as complex detail / NC components for industrial, factory automation, aerospace and automotive applications.

Our manufacturing and engineering capabilities are local as well as LCC, allowing for efficient world-wide shipping to our expansive customer base.

**Tech Rim Standards, LLC**  
281 Collier Road  
Auburn Hills, MI 48326 USA

248.454.1977 p  
248.454.1978 f

[www.techrimstandards.com](http://www.techrimstandards.com)



Your Global Standards Tool Source



# AUTOMATION PRODUCTS



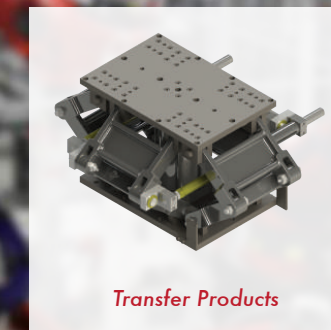
Grippers



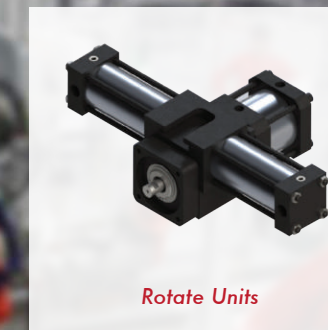
Clamps



Actuators



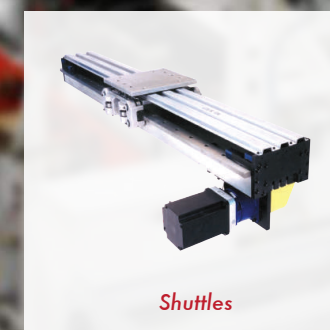
Transfer Products



Rotate Units



Conveyor Rollers



Shuttles

THE ORIGINAL AUTOMATION GIANT JOINS FORCES WITH THE CURRENT COMPONENT LEADER PROVIDING FULL SERVICE INDUSTRIAL COVERAGE.

248.454.1977

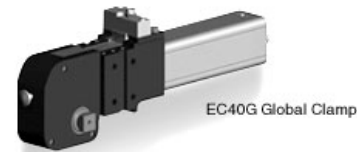
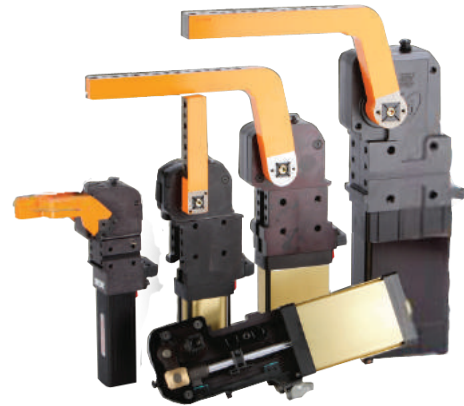
[www.techrimstandards.com](http://www.techrimstandards.com)



TOGGLE PUSH OR CLAMP

## EC SERIES POWER CLAMPS

- Toggle lock clamps. These units incorporate a 'before center' toggle mechanism
- Generate higher clamping forces with locking ability
- Built in 'Stroke to go'
- Highest industry standard repeatability



EC40G Global Clamp



EC50G Global Clamp



EC63G Global Clamp



EC90G Global Clamp

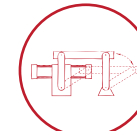
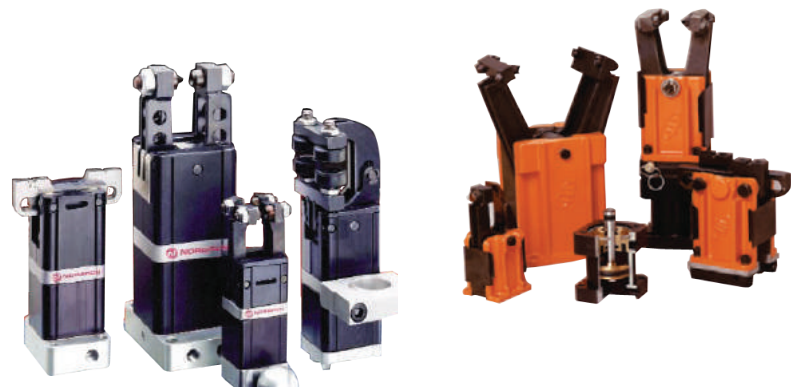


TOGGLE PUSH OR CLAMP

## GL/GH GRIPPERS -

- GL - Modular 360° swivel head adjustment
- GL - Flange and orbital rod mounts
- GH - 3 series of sizes (mini, standard & heavy duty)
- GH - Over 50 gripper head combinations
- GH - 2/4 point gripping
- 5 cylinder sizes - 16, 28, 32, 35, 40

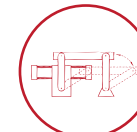
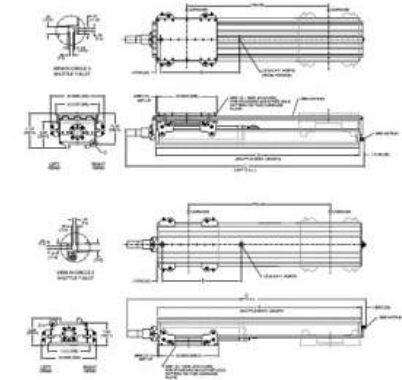
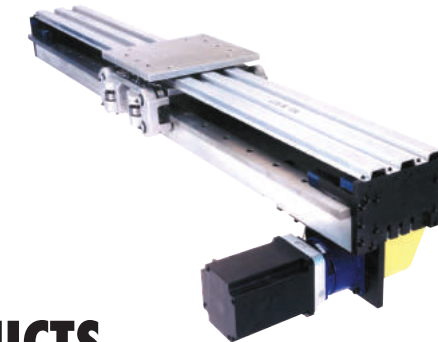
	J1 Gripper Jaw Single Insert 43° Opening		J2 Gripper Jaw Double Insert 43° Opening
JFL - Fixed Upper JFL - Fixed Lower Jaw		JDL - Fixed Upper JDL - Fixed Lower Jaw	
	J3 Chisel Jaw Single Insert 43° Opening		J4 Chisel Jaw Double Insert 43° Opening
	J7 Drop Away Single Insert		J8 Drop Away Double Insert
	J9 Parallel Motion Outside Diameter J9X - Metric Jaw		J10 Parallel Motion Inside Diameter J10X - Metric Jaw
	J12F Fixed Upper Jaw Single Insert Flange Gripper		J11F Fixed Upper Jaw Double Insert Flange Gripper
	J28 Double Insert 90° Opening Fixed Lower Jaw Gripper		
	J91 Single Insert 90° Opening Gripper		J90 Double Insert 90° Opening Gripper
	J181 Single Insert 180° Opening Gripper		J180 Double Insert 180° Opening Gripper
	C2A Gripper Clamp 90° Arm		C3A Gripper Clamp Straight Arm



AUTOMATION TRANSFER

## SU SERIES SHUTTLE UNITS

- Rack/ Pinion
- Multiple size options (800mm, 3600mm)
- Heavy duty application



AUTOMATION TRANSFER

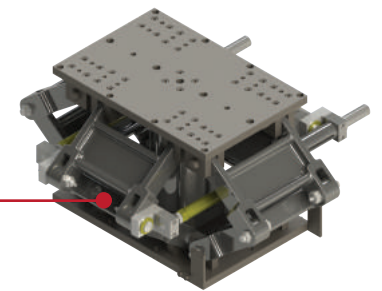
## TRANSFER PRODUCTS

### AU1100 LIFT UNIT

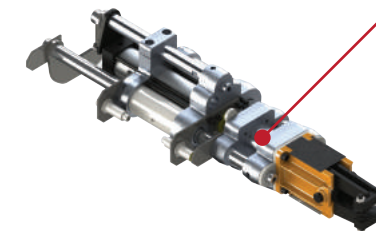


- Dual hardened guide rods on all units
- 'Open Cavity' rod options also
- 4" bore cylinder - up to 300 lb lift.
- Low closed profile of 12.75"

### SLA6A/HDSL6A LIFT UNIT

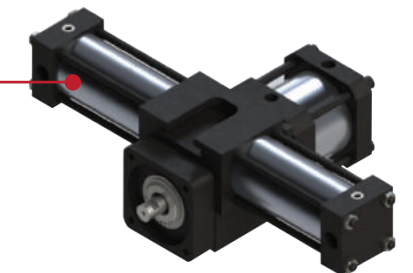


### AU SERIES LINEX UNITS



- Precision settings - long reach
- Versatile, actuating units
- Pneumatic counterbalances
- Optimax Stroke / axis options

### AGHR ROTATE UNITS



AUTOMATION TRANSFER

## CR/SR ROLLERS



RR42 Rolflex Cushion Rollers

- 35 durometer RR42 Roller - covered with a tough, 'cut resistant' 60 durometer "TUF TIR" (tm).
- Strong, Shock absorbing ride
- Long lasting, cut and wear resistant



CR42 Cushion Finned Rollers

- Featuring specially compounded, extra soft material for proper treatment of fragile parts.
- The finned design accentuates the cushioning effect.
- Molded to a precision steel liner providing versatile mounting options.



SR42 Rolflex Cushion Rollers

- Perfect for transfer of heavy pallets, crates, stampings and castings.
- Low level noise operation
- Extra long service life