

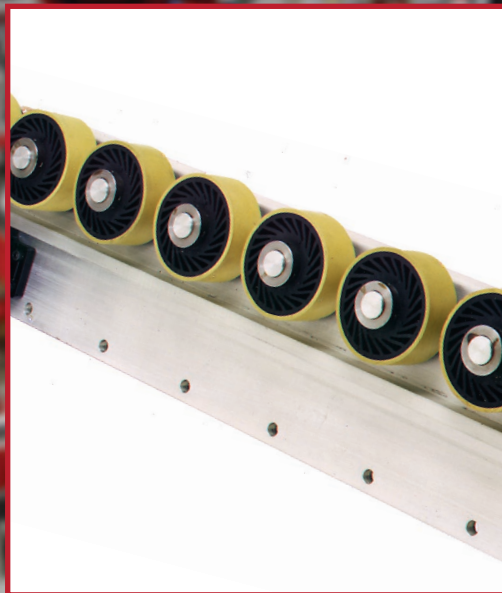
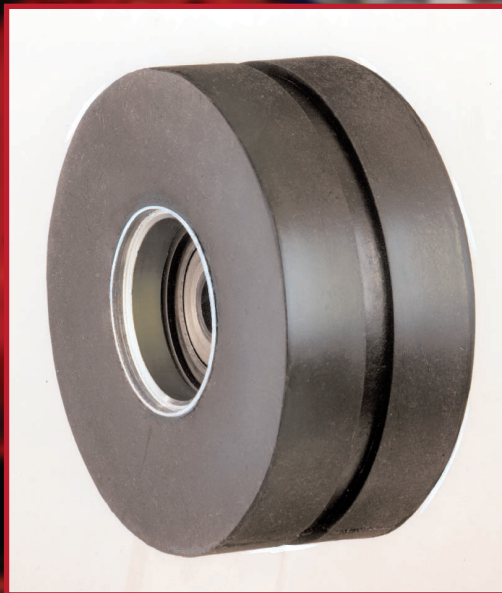


TECH RIM



A Division of Tech Rim Standards

AUTOMATION ROLLERS



248.454.1977

www.techrimstandards.com

TECH RIM | 

A Division of Tech Rim Standards



RR42 Rolflex Cushion Rollers

“TUFF SKIN-TENDER HEART”

This is the roller for which Tuf-Tir was designed. Combine the soft-hearted, 35 durometer RR42 Rolflex Roller with a tough, cut-resistant 60 durometer urethane Tuf-Tir. Results: a gentle, shock absorbing ride from the special soft angular spoke roller with the long lasting, non-marking, cut- and wear-resistance of the urethane! Unique in design and performance!

Model RR42-C showing Bearing Style “C”



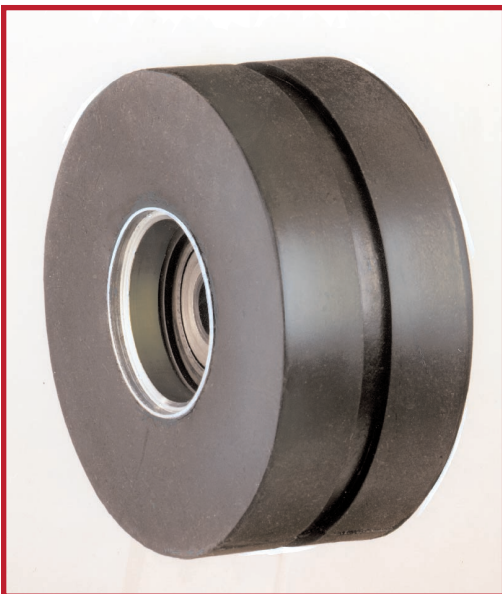
CR42 Cushion Finned Rollers

“THE SOFT TOUCH”

- Featuring specially compounded, extra soft material for proper treatment of fragile parts
- The finned design accentuates the cushioning effect.
- Molded to a precision steel liner providing versatile mounting options.
- Developed for transferring sensitive exterior automotive sheet metal.

NOTE: Nominal diameter of CR42 is 4 inches. (Tuf-Tir not available).

Model CR42-A showing Bearing Style “A”



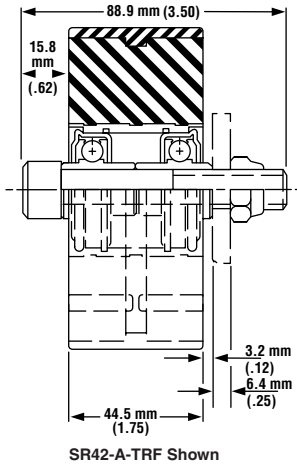
SR42 Rolflex Cushion Rollers

“THE HEAVY MOVER”

Heavy parts and tough industrial applications call for beefy, solid rollers. SR42 is the answer for transferring heavy boxes, crates, heavy parts like stampings, castings, and steel plates without the high noise level of steel rollers. For extra long, cut-resistant service life, add a patented 60 durometer, non-marking, urethane Tuf-Tir. Tuf-Tir snaps on and locks into the .25” angular groove and can be replaced to extend the life of the roller. For heavy or side thrust load applications, factory bonding of Tuf-Tir is recommended.

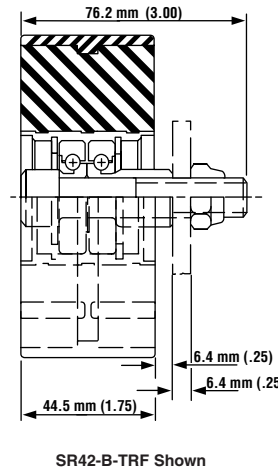
Model SR42-B showing Bearing Style “B”

Bearing Mounts



STYLE A
CR42-A
SR42-A
RR42-A

Standard "Hub type" bearing mount. The precision enclosed ball bearings are spread for maximum stability and greater load capacity.

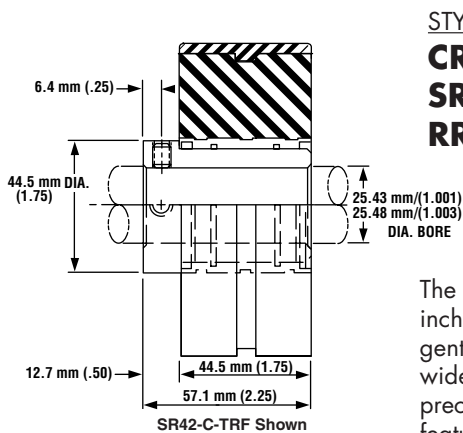


STYLE B
CR42-B
SR42-B
RR42-B

Compact bearing mount allows cap screw to be recessed within the Hub. "Thin" Profile squeezes into tight places.

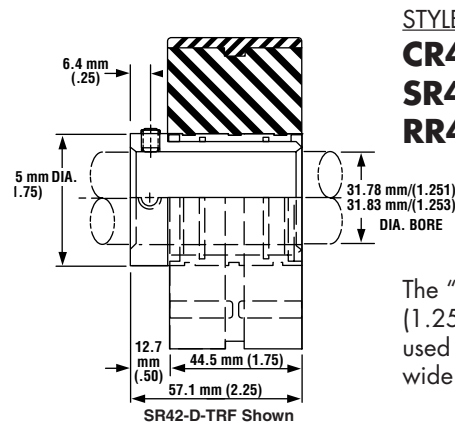
High Tensile Socket Cap Screws included (1/2-13 socket head screw and locknut)

Shaft Mounts



STYLE C
CR42-C
SR42-C
RR42-C

The "C" model 25.4 mm (1 inch) shaft mount provides gentle efficient transfer of a wide variety of parts. The precision machined hub features double locking cap screws positioned at 90° on shaft to prevent slipping.



STYLE D
CR42-D
SR42-D
RR42-D

The "D" model 31.75 mm (1.25 inch) shaft mount is used for heavier load and wide span applications.

NOTE: ALL ROLLER STYLES ARE 101.6 mm ± 1 mm (4.00 ± .04") DIA. WITHOUT TUF-TIR
107.95 mm ± 1 mm (4.25 ± .04") DIA. WITH TUF-TIR

Ordering Information

RR42 - A - TRF - B

- └─ Cover Bonded (optional)
- └─ Tuf-Tir Cover (optional)
- └─ Styles - A: Bearing Mount, B: Compact Bearing, C: 1" Dia. Shaft, D: 1.25" Dia. Shaft
- └─ Model RR42, CR42, SR42

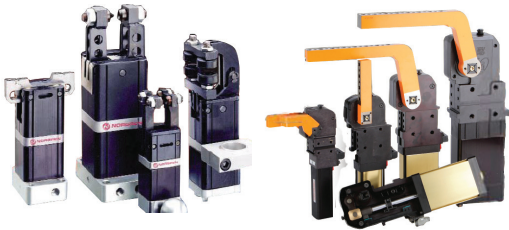
248.454.1977

www.techrimstandards.com



NAAMS

- Worlds largest inventory of NAAMS Standard components
- Standardized parts for many diverse industries / markets
- Euro Standards
- A true 'Value Added' commodity source!



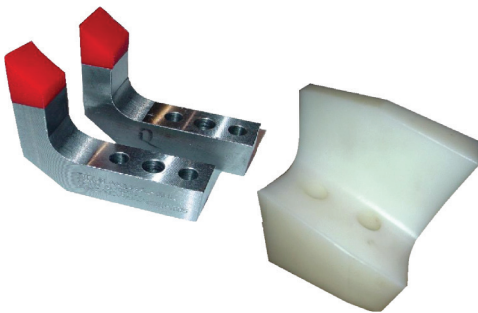
CLAMPS AND GRIPPERS

- EC series Clamps have a 'before center' locking mechanism
- EC Clamps have hundreds of options available for factory automation solutions
- Strong – yet compact, GL/GH Grippers have 5 cylinder options
- Our Grippers have over 50 head combinations



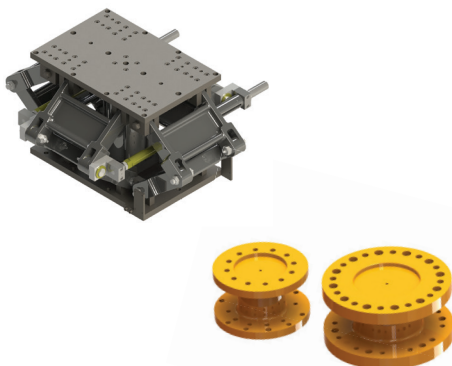
PIVOT UNITS

- Very popular 'Off the Shelf' pneumatic units
- Industry leading – Fully adjustable!
- Multiple cylinder and mounting options
- Unique and compact design



NC / DETAIL COMPONENTS

- We Design and construct thousands of custom components annually
- High quality – Low cost!
- Hundreds of material capabilities
- Small batch to high production



AUTOMATION / TRANSFER

- Shuttles, Slides and Lift units
- Conveyor Rollers – in 3 industrial options
- 'Universal' mounted Robot Spacers
- Open architecture Clamping systems