

# RADICAL CONNECTIONS ANNUAL REPORT 2022

[info@radicalconnections.ca](mailto:info@radicalconnections.ca)

<http://www.radicalconnections.ca>



# TABLE OF CONTENTS

A MESSAGE FROM THE EXECUTIVE DIRECTOR.....	3
A MESSAGE FROM THE INTERIM CHAIR.....	5
A YEAR IN BRIEF.....	6
SUMMARY.....	6
FINANCIAL STATEMENTS.....	25
BALANCE SHEET.....	25
STATEMENT OF OPERATIONS.....	26
STATEMENT OF CASH FLOWS.....	27

# MESSAGE FROM THE EXECUTIVE DIRECTOR

In 2022, we focused on building a strong foundation for Radical Connections. Our vision, *to improve care and strengthen communities by bringing artists and people in healthcare together*, was reinforced when we observed the impact of Unmasked Connections for both long-term care (LTC) residents and artists. Denise, a poet currently living in LTC, after her first virtual connection with poet Eleanor Crowder, described the experience as an “awakening” and started writing poetry again. Cellist Fanny Bray, after performing at our first live concert in the St-Vincent Hospital atrium, expressed that “it gives so much more meaning to my musical life”. We are eager to create many more opportunities to bring artists into healthcare!

At the same time, we are taking steps to ensure Radical Connections is funded and sustainable. In 2022, we had our inaugural board meeting, hired an essential business manager, applied for charitable status, received two grants while applying for more, published newsletters, launched an eCommerce website, and developed and strengthened our partnerships with universities, research institutes, and community organizations. There is much to celebrate, and I am immensely grateful to our expanding team - cj fleury, Liz Loewen, Heidi Sveistrup, Anne Coulombe, Jenny McMaster, Sri Alageswaran, our many students and researchers, and all our fantastic artists. A special mention of gratitude also goes to our Bruyère partners, especially Kim Durst-Mackenzie and Bryanne Bradley, whose dedication went above and beyond to make Unmasked Connections work for their LTC residents. Bruyère also hosted our first live performances, which felt like pure joy.

Looking forward to 2023, we anticipate we will shortly receive notification that we have charitable status, which will open doors for sponsorship, grants, and donations. With expected funding and the assistance of students and partners, we will move ahead with the development of our own platform to facilitate access to virtual and live Healing Interactive Performances with our artists. At the same time, we will expand the artist team, and create opportunities for visual artists to provide workshops with people in healthcare. In keeping with our strategic goals, we will also expand and mature the board, in tandem with broadening our financial supports. We plan to move beyond healthcare facilities, working with community partners to reach people in their homes. To validate and increase the impact of the arts in

healthcare, we will continue to research new initiatives and provide mentorship for students.  
Yes, this work is meaningful and fun!

**Dr. Carol Wiebe**  
**Executive Director**



# FROM THE INTERIM CHAIR OF THE BOARD

On behalf of the Radical Connections Board, I commend Dr. Carol Wiebe, Executive Director, and the Radical Connections team (Jenny McMaster and Sri Alageswaran) for a successful inaugural year. It has been my pleasure to serve with the other board members (cj fleury, Heidi Sveistrup, and Anne Coulombe) as we work to support the team in establishing a strong foundation for this important work to transform and humanize long term care.

The year ahead will mark important milestones in the establishment of Radical Connections as the organization establishes charitable status and continues to work closely with artists, elders, students, and health care delivery organizations to refine the service model. Our thanks to those who participated to date and made space for creativity.

As we enter our second year, the Board will focus on building a mature and diverse board structure to provide Radical Connections with a sustainable future structure.

**Dr. Liz Loewen**  
**Interim Chair of the Board**



# 2022: A YEAR IN BRIEF

## Summary

**Unmasked Connections:** 25 Virtual performances, 6 in person concerts, 13 residents (for virtual sessions), 50-75 patient/staff member attendees at in person concerts. These numbers are lower than anticipated, largely due to decreased availability of therapeutic recreation staff secondary to Covid outbreaks in LTC.

**New Artist Directory** - recruited, interviewed, and prepared 20 artists to work in healthcare

**New Business Manager** - crucial for financial documents and charitable status application

**New Research and students** - two areas of research: feasibility study; impact on quality of life

**Inaugural Board Meeting** - April 1, 2022, with subsequent board meetings and Strategic Retreat October 9th

**Three newsletters** - online publications with variety of internal and external contributors, advocating for the arts and health

**Marketing** - two brochures, social media presence (Facebook, YouTube, LinkedIn)

**Grants** - Eldercare, OAC

**Culture Days Hub, and Spotlight award for Most Inclusive Programming**

## January

**Then Program Coordinator Jenny McMaster attends the [Art for Social Change Now National Gathering](#).**

- The ASCN conference was an excellent opportunity to learn about projects by diverse groups from across the country.
- Art for Social Change supports a series of Community Arts Hubs in each province across Canada with Art Bridges in Ontario.
- Radical Connections is now featured on [ArtBridges' Directory and Map](#) of Canada featuring community engaged arts organizations across the country and often posts on Art Bridges [What's Going On](#) Calendar.

## February:

Radical Connections is awarded its first Ontario Arts Council Grant for 8K to run the pilot project **Unmasked Connections (then titled Unmasked Match-Ups)**



*Unmasked Connections logo designed for the program by cj fleury.*

[Unmasked Connections](#) are personalized, intimate, and interactive performances for people in care - Musicians, storytellers, actors, and poets partner with healthcare organizations, support staff, families, and volunteers to deliver virtual concerts to vulnerable populations in hospitals and residences.

[The Multi and Inter-Arts](#) Development Initiative Grant from the OAC supports the creation, production, and presentation of multi- and inter-arts activities by professional Ontario artists, ad hoc groups, collectives and organizations working in all art forms and

initiatives that benefit the professional multi- and inter-arts community.

The funds are used to pay Ontario artists for Unmasked Connections with residents at Residence Elisabeth Bruyère and Residence Saint-Louis (Bruyère LTCs). Radical Connections strongly believes in the importance of paying artists fairly for their work according to CARFAC standards.

## The Planning Phase of the Unmasked Connections Project Begins

**À PROPOS  
ALL ABOUT**

Appellez-moi  
Call me

Demandez-moi  
Ask me about

Je suis vraiment fier (fière) de  
I am most proud of

Mes petits  
plaisirs

My simple  
pleasures

Ce qui me dérange  
My pet peeves

Je veux aussi que vous sachiez / I also want you to know

Bruyère

Radical Connections staff and administrators from Bruyère (Anne Laure Grenier, Kim Durst Mackenzie, Alex Cornett) come together for a series of meetings to discuss the format of the Unmasked Connections program, the needs of the population being served, the training of the artists, as well as ethics and privacy concerns.

Balancing the privacy of the residents with the artists' need for foreknowledge of the individual they would be working with, required many discussions. Permission to record Zoom sessions for research, training, and knowledge dissemination, also required careful deliberation and consultation with Bruyère's Privacy Officer.

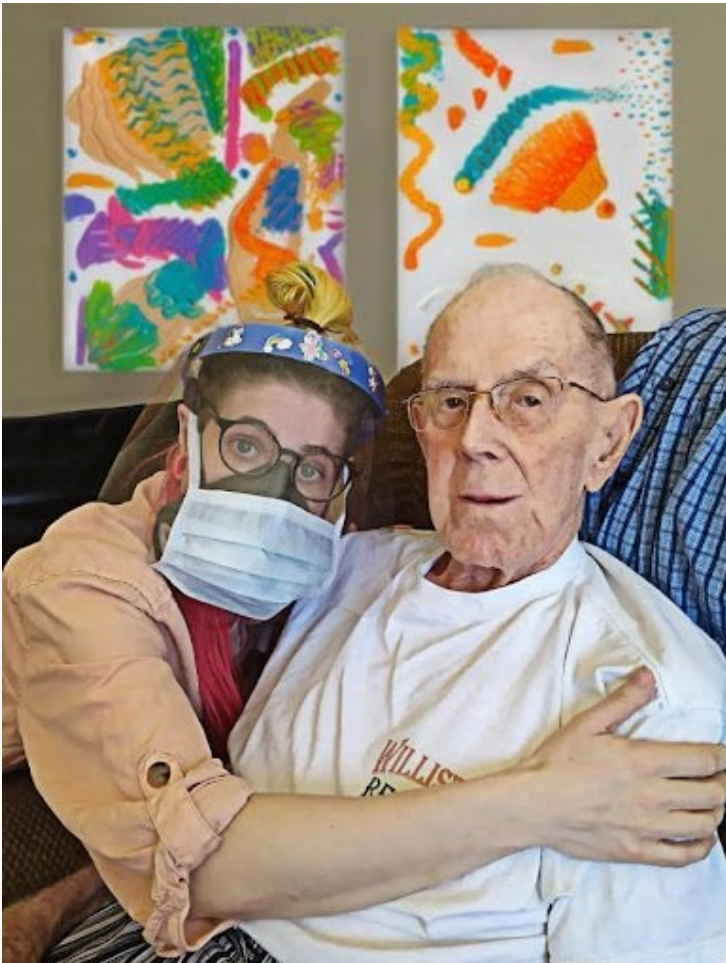
Above: All About Me form filled by residents and their relatives to explain their interests, history, accomplishments and simple pleasures to the artists.

## March:

**Radical Connections launches the Spring Newsletter, an important tool to advocate for the essential role of arts in the healthcare system. The Spring Newsletter Featuring articles on such as:**

[A Letter from Emerging Artist Sara Prisma Williston](#), a young neurodivergent artist who participated in Tangled Art and Disability's Crip Ritual exhibition. Williston describes both the importance of the connection she was able to make with her hospitalized grandfather through art and how inspired she feels about the work of Radical Connections.





Sarah Prisma Williston and Her Grandfather during the Pandemic

[The Arts and Health Movement Takes Root](#) by [The Art of Being Human](#) founder Suzanne Valois. This important advocate explains the progress of this vital cross-sectoral work over the past ten years.

### [Inside Hospitals: An Imposed Aesthetic](#)

by Maren Kathleen Elliott, an interdisciplinary artist, educator, and emerging social-practice artist. Leading up to the article Elliott was researching, connecting, and reflecting on the aesthetics of hospital spaces during a mentorship with cj fleury, and in partnership with Radical Connections.

## April:

### Inaugural Board Meeting

Radical Connections welcomes board members Dr. Heidi Sveistrup, Dr. Liz Loewen and Anne Coulombe, to its inaugural board meeting on April 1st. Drs Sveistrup and Loewen and co-founder cj fleury were former members of the Wise Women, an informal group that advised Carol Wiebe through her MBA and led to the formation of Radical Connections. Having turned 95 in 2022, Anne Coloumbe, with years of experience leading change, brings spiritual and elder wisdom to the board.



**Dr. Heidi Sveistrup**



**Dr. Liz Loewen**



**Anne Coulombe**



**cj fleury**

**Dr. Heidi Sveistrup PhD**, is a full professor in the School of Rehabilitation Sciences, Faculty of Health Sciences, at the University of Ottawa, her research focuses on rehabilitation and the use of technologies to support wellness, engagement, and long life. Heidi was also the CEO and Chief Scientific Officer of the Bruyère Research Institute and VP, Research and Academic Affairs at Bruyère Continuing Care, a multi-site academic health care organization.

**Dr. Liz Loewen PhD:** With over 25 years in healthcare, Liz has worked in many roles including direct patient care and research. Most of her career has been dedicated to health system leadership where she led the establishment of several innovative and provincially scaled digital health solutions. In addition to a Master's in Nursing, Liz holds a Bachelor of Fine Arts and a PhD in health informatics.

Recognized as a creative systems thinker, Liz has received multiple recognitions throughout her career. Liz also brings the perspective of an individual living with progressive degenerative disease to the board as an individual living with Parkinson's Disease.

**Anne Coulombe:** is a retired school administrator, educational mentor, and agent of change. While working on her master's degree at SFU, Anne acted as a sessional instructor and initiated a free Partners in Education Program for parents of learning-disabled children. This led to pioneering the inclusion of students with exceptional needs into regular school classrooms.

During her post master's studies at UBC, Anne collaborated with Shelley Hymel, a psychology professor, to run a summer camp at Bowen Island. She also collaborated with two literacy professors, Florence Pieronek and Ann Lukasevich, on a school-based literacy project. This culminated in the publication of *Favourites, Friendships, Food, and Fantasy: Literature-Based Thematic Units for Primary*.

**cj fleury:** Co-Founder of Radical Connections, cj developed the [Artist in Residence program at Bruyère](#) to break through silos and bring artists of all disciplines into the lives of people impacted by aging and changes in their health. Trained initially in movement and performance, she is an inter-disciplinary artist, deeply interested in human spirit and strategies to support the dynamics of diverse communities and aha-moments.

Researcher, mentor, maker, she works at the intersection of placemaking, collaboration and systems change. Investigating the potential of art in contemporary society, her approach to engagement, belonging and agency, honed through 20 public commissions and a range of innovative art actions, has seen her embedded in communities of labour, feminist law, education, and important social issues. You may know her Ottawa work: the Women's Monument Against Violence (Minto Park), the Dorothy O'Connell Anti-Poverty Activists (City Hall), the 15 sculptures on Little Italy's Preston St.

## Radical Connections onboards research student Rebecca MacDonald



Radical Connections onboards research student Rebecca MacDonald to conduct a feasibility study for the Unmasked Connections pilot project. An MA in the Music and Cognition program at the University of Ottawa she is supervised by Gilles Comeau in the Music and Health Research Institute at uOttawa and ED Dr. Carol Wiebe. Rebecca was a piano major at Queen's University. She graduated on the Dean's Honour List with Distinction, receiving many scholarships along the way.

Over the course of the project Rebecca participated in collaborative meetings between Radical Connections and Bruyère staff during the planning period for Unmasked Connections, conducted interviews with long-term care residents, artists and Bruyère staff, distributed surveys, and watched recordings of virtual sessions. She is currently drafting an article to be submitted to an academic journal.

### May:

#### The first cohort of Radical Connections Artists are trained for the pilot project Unmasked Connections

The first cohort of Radical Connections Artists are trained for the pilot project Unmasked Connections, with a health-themed session lead by Therapeutic Recreation Coordinator Kim Durst Mackenzie and a tech session lead by Radical Connections artist Jesse Stewart and Saint Vincent Hospital's Assistive Technologist Bocar Ndiaye. Artists are also given the opportunity to share their experiences working with vulnerable populations.

*Below: Through a device created by Jesse Stewart, artists and staff members operate a series of gongs which respond to movement captured by webcams over Zoom.*



## Radical Connections launches the Artist Directory

[Radical Connections launches the Artist Directory](#), an online resource which will allow people in care to choose the musician, actor, or poet they would like to connect with, putting the cultural programming back in the hands of community members.

### Healing Interactive Performances, Virtual or In Person!

Theatre | Poetry and Spoken Word | Storytellers | Musicians



Storytellers



Musicians

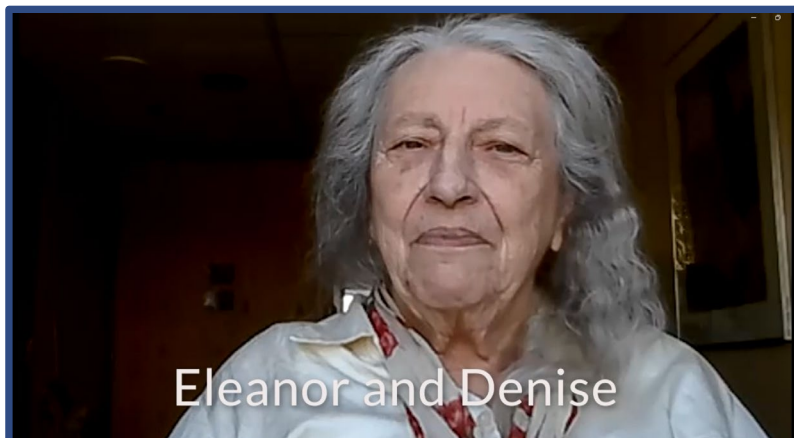
## Radical Connections Mentee and Musician Maren Kathleen Elliott presents Art as Good Medicine at RIA Links

Radical Connections Mentee and Musician Maren Kathleen Elliott presents at Ottawa Artist and Writer Petra Halkes RIA Links Salon in the Cloud. RIA invites artists from the Ottawa area who share a drive for Systems Change to showcase their projects and discuss their ideas. Elliott presents a talk on the subject of arts in healthcare and the potential for patient-centered, collaborative approaches to art in medical spaces:



## June:

Unmasked Connections first virtual performances and workshops begin at Elisabeth Bruyère Residence and Residence Saint Louis



[Play Unmasked Connections Video](#)

## Sri Alageswaran joins the Radical Connections Team as Business Manager



Radical Connections staff are pleased to welcome Sri Alageswaran to the team. An experienced finance professional with over 15 years of experience in finance operations, Sri is a professional accountant holding an H.B. Com degree in business administration and MBA degree specializing in strategic business management.

Sri is passionate about charitable services and enjoys supporting organizations with a mission to make a difference within the community through unique service delivery. She is a service-minded individual and finds meaning in

her work through a solid contribution to organizations with a greater purpose of connecting with people in care.

Some of Sri's contributions include: coordination of the Charitable status application, preparing project budgets for new grant applications, assisting with drafting contracts for artists, process payments to artists for completed performances, draft financial and operational policies, preparing financial statements for board meetings, liaising with the Canada Revenue Agency and Corporations Canada on statutory reporting matters, and managing the treasury, accounting and financial reporting responsibilities. She also shares ideas for Radical Connections' business development strategies.

## Program Coordinator Jenny McMaster takes over as Artistic Director, as cj fleury, Co-Founder of Radical Connections, steps up and joins the Board

Tireless, passionate, and creative Co-Founder and Artistic Director, cj fleury retires from Radical Connections. Her work to establish the artist in residence program at Bruyère,

acquire seed funding, recruit and mentor local artists, and build the beautiful RC website and logo are among her many accomplishments. She remains an important contributor to Radical Connections as a board member. We are very pleased that Program Coordinator Jenny McMaster has stepped in to fill her sizable shoes as Artistic Director.



cj fleury



Jenny McMaster

### Radical Connections Welcomes research student Aahana Uppal



Aahana is an undergraduate student at Carleton University in the Cognitive Science program. Supervised by Lisa Sheehy of the Bruyère Research Institute and Executive Director Carol Wiebe, Aahana conducted a Quality of Life study; focusing on people living at the two Bruyère Residences participating in our virtually-delivered arts project; Unmasked Connections.

With ten years of piano study, Aahana combines her passion for music with her



interest in healthcare, and experience volunteering with seniors at the Perley Rideau Veterans Centre.

## August

### **MARSWorks presents its plan for the development of an online platform for the VIP4HC group (Virtual Intimate Performances for Healthcare)**

[https://us02web.zoom.us/rec/share/OGer4T1LOx6U2cUOUFBECsoQmnWnCsy\\_G93TKPEtN4EVNg2Spq1gYb5c7FG5hkl4.loKCrMGTLG5Fjv3c](https://us02web.zoom.us/rec/share/OGer4T1LOx6U2cUOUFBECsoQmnWnCsy_G93TKPEtN4EVNg2Spq1gYb5c7FG5hkl4.loKCrMGTLG5Fjv3c)

Guided by UX Experts [Jumping Elephants](#), Radical Connections posted a Request for Service for the development of a platform to facilitate and automate online virtual performances and workshops. Radical Connections received multiple Statements of Work from developers. [MARSWorks](#) was chosen as the most reasonably priced and proficient developer from among multiple applicants.

In August MARSWorks presented their plan for VIP4HC, a group of experts which includes medical artists, healthcare professionals, inclusivity and accessibility specialists, music and health researchers, and interface design specialists including: Pianist/doctor Carol Wiebe, Community-directed interdisciplinary artists cj fleury and Jenny McMaster, who have strong backgrounds both in working with vulnerable populations and promoting the arts, Dr. Jerry Maniate, physician leader and Director of Equity in Health Systems Lab (EqHS), Heidi Sveistrup PhD, former President of the Bruyère Research Institute, who brings her research lens and healthcare experience, Gilles Comeau PhD, Director of uOttawa's Music and Health Research Institute, who serves as a mentorship and research advisor, Kim Kilpatrick, a blind community engaged storyteller, who has been central to the project providing accessibility consultation, Martin Brooks PhD, a musician and videoconferencing expert, who joins our partnership as a technical advisor, and Jesse Stewart (Carleton U and uOttawa) "an award-winning composer, percussion artist, dedicated to reimagining the spaces between artistic and academic disciplines".

MARSWorks will design and create an interface which will facilitate the selection of performers, scheduling, payment, online performance, research, and feedback. Performers, residents/patients, and their assistants will be able to use this interface independently to

connect from wherever they are located. The highest ethical standards will be employed to protect the privacy and rights of patients and residents. MARSWorks will work with our accessibility expert Kim Kilpatrick and UX Experts Jumping Elephants to ensure that seniors with little technological expertise and individuals with physical or mental impairments can use the platform with minimal aid from care workers or family members.

The development of the platform will begin in 2023 when Radical Connections receives funding.

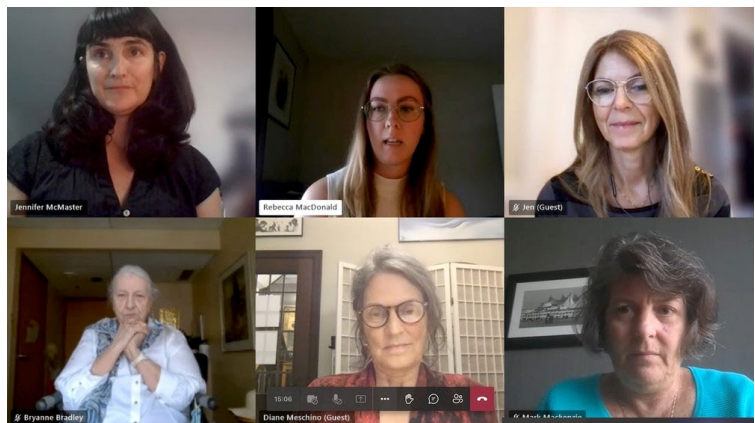
## September:

### Culture Days

As a part of [Ontario Culture Days](#) (an initiative to celebrate arts and culture) Radical Connections partners with Bruyere to present [Grand Rounds in Saint Vincent Hospital](#) offering events and learning opportunities for healthcare staff, patients, and families.

**The Performance in the Saint Vincent Atrium** on September 23rd featured Unmasked Connections' artists: storyteller Kim Kilpatrick, cellist Fanny Marks, jazz vocalist Empress Nyiringango, as well as pianist Dr. Carol Wiebe, Radical Connections' Executive Director. This wonderful event received Culture Days' [Spotlight Recognition Award](#) for most inclusive programming. This category recognizes those who have created more inclusive programming by putting equity and accessibility at the forefront.

At the online panel discussion [Ground Rounds in Conversation](#) on September 27<sup>th</sup>, participants had an opportunity to learn more about the impetus, development, and impact of Unmasked Connections. Panelists included Therapeutic Recreation Coordinator (Bruyère), Kim Durst-Mackenzie, Actor Jennifer Vallance, Poet and Long-Term Care Resident Denise, and Rebecca Macdonald, a research student involved in the project since the beginning. The



panel discussion also featured psychiatrist Diane Meschino from [Sanokundu](#), a multi-national community of practice invested in healthcare leadership education.

## Executive Director Dr. Carol Wiebe presents at the [Ottawa Cultural Research Group](#)

The OCRG brings together many partners to work on culture-related research, data analysis, and reporting. The Group includes representatives from multiple City of Ottawa departments, the federal government, the cultural sector, the academic community, and community organizations.

Executive Director Carol Wiebe and Artistic Director Jenny McMaster meet with the OCRG to discuss the importance of recognizing hidden cultural venues like hospitals and care residences as well as finding community spaces for Social Prescribing: Social Prescribing is a tool that complements and supports medical care by connecting people to a range of local, non-clinical services that address the social determinants of health. It emphasizes co-creating better health solutions with clients and community providers. See the newsletter article [Social Prescribing by Doctor Carol Wiebe](#).

## October:

### Culture Days:

**Thursday September 29th a Double Art Exhibit opens in Saint Vincent Hospital:** Both exhibits are available both online or in person with the goal to make the events and learning opportunities accessible to everyone and offer different ways for people to participate. The exhibitions are available as virtual 3D galleries created with a program called Kunstamatrix. Assistive technology, including joysticks and eye-tracking systems, allow patients with physical impairments to visit a realistic virtual gallery!

*ShapeVision's ["Hidden Shapes of Nature"](#):* explores the beauty of the natural world in the form of large-scale, complex images that are formed using a new digital imaging software.

*"People Who Love People"* by Oscar Parra: a Colombian photographer, and an Arts Network Ottawa Mentee, who worked with cj fleury, the Bruyère Artist in Residence, and Bruyère employees to create 12 portraits of healthcare workers during the pandemic. As the artist describes it, "this series of works is a window that invites us to look at the dedication to service as an inborn desire of the spirit."



Maren Kathleen Elliott selecting works of art for the "Hidden Shapes of Nature" Exhibition by Shape Vision

**Curation as Collaboration, Online Talk: October 6th:** Interdisciplinary artist/curator Maren Kathleen Elliott and social work student/artist Eva Petersen Ndiaye discuss their current co-curation project (made possible through the Bruyère Academic Medical Organization) at Saint-Vincent Hospital. What happens when hospital patients and staff are involved in artistic decisions in their own environment?

### **Radical Connections Board Strategic Planning Day: October 9th**

4 Goals were set:

Goal 1: Begin to provide services directly to patients/families/organizations

Goal 2: Develop donor/charitable giving pipeline for Radical Connections

Goal 3: Establish grants revenue stream

Goal 4: Establish a mature organization and board structure

## November

### Music Student Wellness Project

In early November, ED Dr. Carol Wiebe participated in two wellness workshops for music students. Over three days, first at uOttawa, then at Laurier University, she and the team explored Schubert's *Die Schöne Müllerin* song cycle through a health and wellness lens, ending with a shared performance of the song cycle. Together with colleagues Laura Loewen (collaborative pianist), Colin Ainsworth (tenor), Danna McDonald (counsellor), and voice and piano students from the two universities, they delved into the process of creating a healthy relationship between the performer and character, shared practising and performance insights that foreground selfcare, and then brought those learnings into a moving performance of the song cycle featuring both student and professional performers.



Pianist Laura Loewen, music student Matthias Mark-George, and Tenor Colin Ainsworth

## December:

### The December Newsletter is Launched featuring articles on:

A rewarding Unmasked Virtual session between spoken word artist [Namitha Rathinappilla](#) and a resident of [Elizabeth Bruyere](#) Residence. Through meeting this resident, she had the honour of being able to connect with a fellow writer and activist. Throughout the session, Namitha and the resident realised they had in common not only their enjoyment for writing, but also their interest in feminism, disability rights and their concern for the issue of consent.



[Iris Kiewiet's Friendly Guidance mural](#) at Bruyère's Stroke Rehabilitation Unit at Bruyere, an article by cj fleury. In conversation with Julie Savage, Clinical Manager of Bruyère's Stroke Rehabilitation Iris created a welcoming mural for the 3rd floor outpatient stroke Rehabilitation unit. Her composition of colour, symbols, and shapes spreads across a 3'x7' wood panel. Her successful blend of visual and verbal languages builds meaning, as it expresses information and milestones. Other visual elements and messages can be discovered over time and repeated viewings, by a wide variety of site users; patients, physicians, allied health practitioners, staff and other supporters.

## **Executive Director Carol Wiebe and Artistic Director Jenny McMaster meet with Ottawa Art Gallery Director Alexandra Badzak.**

Jenny and Carol met with Director Alexandra Badzak to discuss a partnership. Among the future ventures suggested were:

- A launch event at the OAG featuring Radical Connections performers
- An event to publicize the StoryTelling and Palliative Care project, which involves the collaboration between PCU staff and researchers, and Radical Connections storyteller Kim Kilpatrick who will help patients and staff to voice their memories, emotions and experiences
- An event to draw attention to serious curatorial practices by British and Canadian hospitals which bring professional artwork into healthcare environments featuring speakers such as Ellen Cunningham of the McMullen Gallery





**RADICAL CONNECTIONS**  
PRESENTS  
**HEALING INTERACTIVE PERFORMANCES GET HIP!**



[www.radicalconnections.ca/hip](http://www.radicalconnections.ca/hip)

## Launch of Healing Interactive Performances:

Radical Connections Launches our eCommerce site for Healing Interactive Performances, in time for the holiday season. HIP offers online workshops, personal performances, as well virtual concerts and in person concerts by Radical Connections artists for anyone isolated due to healthcare. Prior to this launch, Radical Connections services were only available where Radical Connections had funding.

## Radical Connections creates two digital and hardcopy brochures:

Radical Connections Artistic Director Jenny McMaster designs two brochures for digital and in-print distribution one describing all Radical Connections programming and one detailing HIP programs.

## Radical Connections Holiday Party: Dec 30th

The first annual end-of-year Radical Connections party perfectly represented 2022. Although numbers were small, it

was celebratory and life-giving, with amazing interactive performances from the artists.



# FINANCIAL STATEMENTS

## Financial Highlights

Radical Connections was incorporated on 19th August 2021 as a non-profit corporation. The **Balance Sheet** report shown below reflects the corporation's financial position as at December 31st 2022, which is the first official financial year-end. The December 31st, 2021, figures represent partial year activities from 19th August 2021 (incorporation date) to 31st December 2021.

<b>Radical Connections - Connexions Vitales</b>		
<b>Balance Sheet - Unaudited</b>		
<b>As of December 31, 2022</b>		
	<b>Total</b>	
	<b>As of Dec. 31, 2022</b>	<b>As of Dec. 31, 2021 (PY)</b>
<b>ASSETS</b>		
Cash and Cash Equivalent	\$1,210	\$777
Prepaid Insurance D&O	594	-
Total Assets	<u>1,804</u>	<u>777</u>
<b>LIABILITIES AND EQUITY</b>		
Current Liabilities		
Short term borrowings from related parties		
	96,952	17,000
GST/HST/QST Payable	(8,100)	(858)
Total Current Liabilities	<u>88,852</u>	<u>16,142</u>
Total Liabilities	<u>88,852</u>	<u>16,142</u>
Equity		
400 Opening Balance Equity	15	15
Retained Earnings	(15,380)	-
Profit for the year	(71,683)	(15,380)
Total Equity	<u>(87,048)</u>	<u>(15,365)</u>
Total Liabilities and Equity	<u>\$ 1,804</u>	<u>\$ 777</u>

The **Statement of Operations** reflects the operating activities for a twelve-month period ending 31st December 2022. The income received is lower than the operating costs, which is typical for a new non-profit at its startup phase. The operating deficit reported reflects startup costs incurred and investments made to promote services.

Radical Connections has applied for registered charity status with the Canada Revenue Agency and expects to receive approval before spring of 2023. Once qualified as a registered charity, Radical Connections can issue donation receipts to prospective donors; hence, expecting donation revenue growth to support the general operations. Further, the charitable status will qualify Radical Connections secure funding support from foundations, associations, and corporate donors.

## Radical Connections - Connexions Vitales

### Statement of Operations- Unaudited

January - December 2022

	Total	
	Jan - Dec. 2022	Jan - Dec. 2021 (PY)
<b>INCOME</b>		
Donations - General Public	\$830	\$-
Project Funding - Ontario Arts Council	8,000	-
Project Funding - Bruyère Research Institute	18,400	-
<b>Total Income</b>	<b>27,230</b>	<b>-</b>
<b>EXPENSES</b>		
Staff Cost	84,761	15,368
Honorariums	1,000	-
Performance Cost - Artists	8,320	-
Legal and Professional Fees	2,122	-
Promotional	1,940	-
Other Expenses	771	12
<b>Total Expenses</b>	<b>98,913</b>	<b>15,380</b>
<b>Surplus/(Deficit)</b>	<b>(\$71,683)</b>	<b>(\$15,380)</b>

The **Statement of Cash-Flows** reflect the funding sources used to support operating activities. Since the incorporation, Radical Connections' operational activities have been funded by a generous supporter via a short-term loan. Management intends to settle this loan through future donations and revenue forecasted from Healing Interactive Performance (HIP) ticket sales.

**Radical Connections - Connexions Vitales**  
**Statement of Cash Flows - Unaudited**  
**January - December 2022**

	As of Dec. 31, 2022	As of Dec. 31, 2021 (PY)
<b>OPERATING ACTIVITIES</b>		
Net Income	(\$71,683)	(\$15,380)
Prepaid Insurance D&O	(594)	-
GST/HST/QST Payable	(7,242)	(858)
Net cash provided by operating activities	<b>(79,519)</b>	<b>(16,238)</b>
<b>FINANCING ACTIVITIES</b>		
Short term borrowings	79,952	17,000
Opening Balance Equity	-	15
Net cash provided by financing activities	<b>79,952</b>	<b>17,015</b>
Net cash increase for period	<b>433</b>	<b>777</b>
Cash at beginning of period	777	
Cash at end of period	<b>\$1,210</b>	<b>\$777</b>

