



**ROYAL
THAI**

UNSCRIPTED

*Wash
Handtufted
Collection*

ABOUT

Unscripted

ABOUT

Royal Thai

Inspired by five decades of tradition and energized by a future yet to be written, Royal Thai is proud to present Unscripted, a collection unlike any in its history. As its title suggests, Unscripted evokes a point of departure, a place where the path is no longer marked, where the way forward is an open, inviting expanse of unlimited possibility.

This visually arresting collection is not completely disengaged from the past, however. Each of its designs carries echoes of classic motifs from the Royal Thai archives, unmoored from their origins and refracted through a contemporary prism to present a forward-facing – not retrospective – vision.

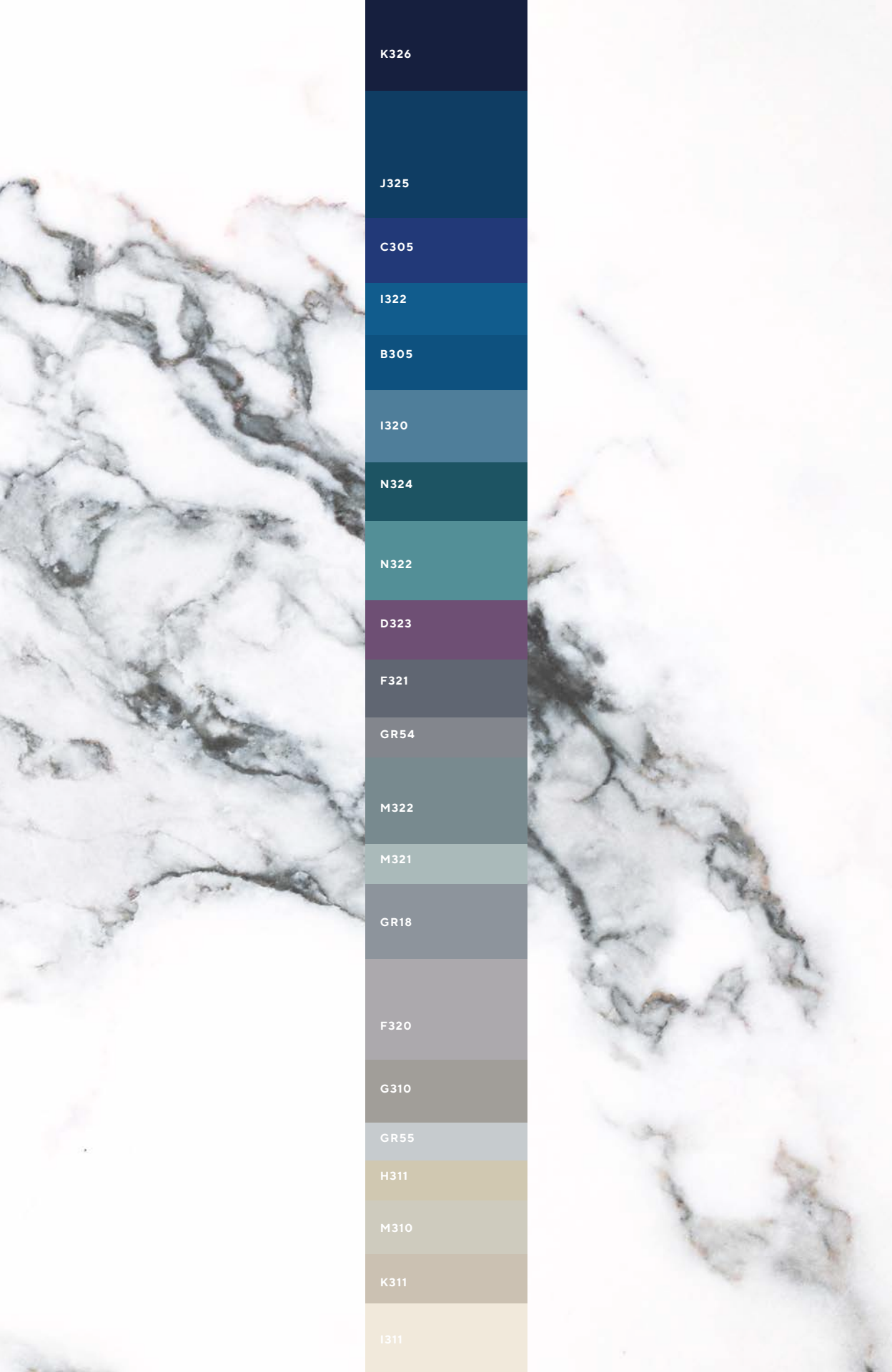
Arranged into four thematic groups, from the clean, bold, geometric patterns of Broken Graphics to the marbled, textured swirls of Movement, the collection's handtufted and Axminster designs shatter, reconfigure, and redefine traditional archival patterns to embrace the exhilaration that resides on the precipice of the unknown. Together, these creations stand as a collection whose beauty and volatility conjure a breathtaking metaphor for our unsettled times.

As carpet designers and collaborators, Royal Thai's inspiration draws from many worlds—from fine art, fashion and architecture to our process, machinery and materials. Partnering with a wide variety of artists from around the world, we offer a multicultural perspective with an extensive library of unique patterns and an unparalleled process—helping clients enhance their overall vision. No matter where in the world our carpets roll out, they capture attention and add the finishing touch to spaces and stories.

The background of the entire page is a piece of marbled paper. It features a complex, organic pattern of swirling, vein-like shapes in shades of light blue, grey, and white. The lines are irregular and fluid, creating a sense of movement and depth, reminiscent of natural stone or water currents.

Wash

These impressionistic designs evoke scenes of the natural world, suggestive of sky and water, but viewed through a new and unfamiliar lens. Layers of detail are rinsed away and distorted to the point of abstraction, creating a sensation that is, at once, both vibrant and serene.



K326

J325

C305

I322

B305

I320

N324

N322

D323

F321

GR54

M322

M321

GR18

F320

G310

GR55

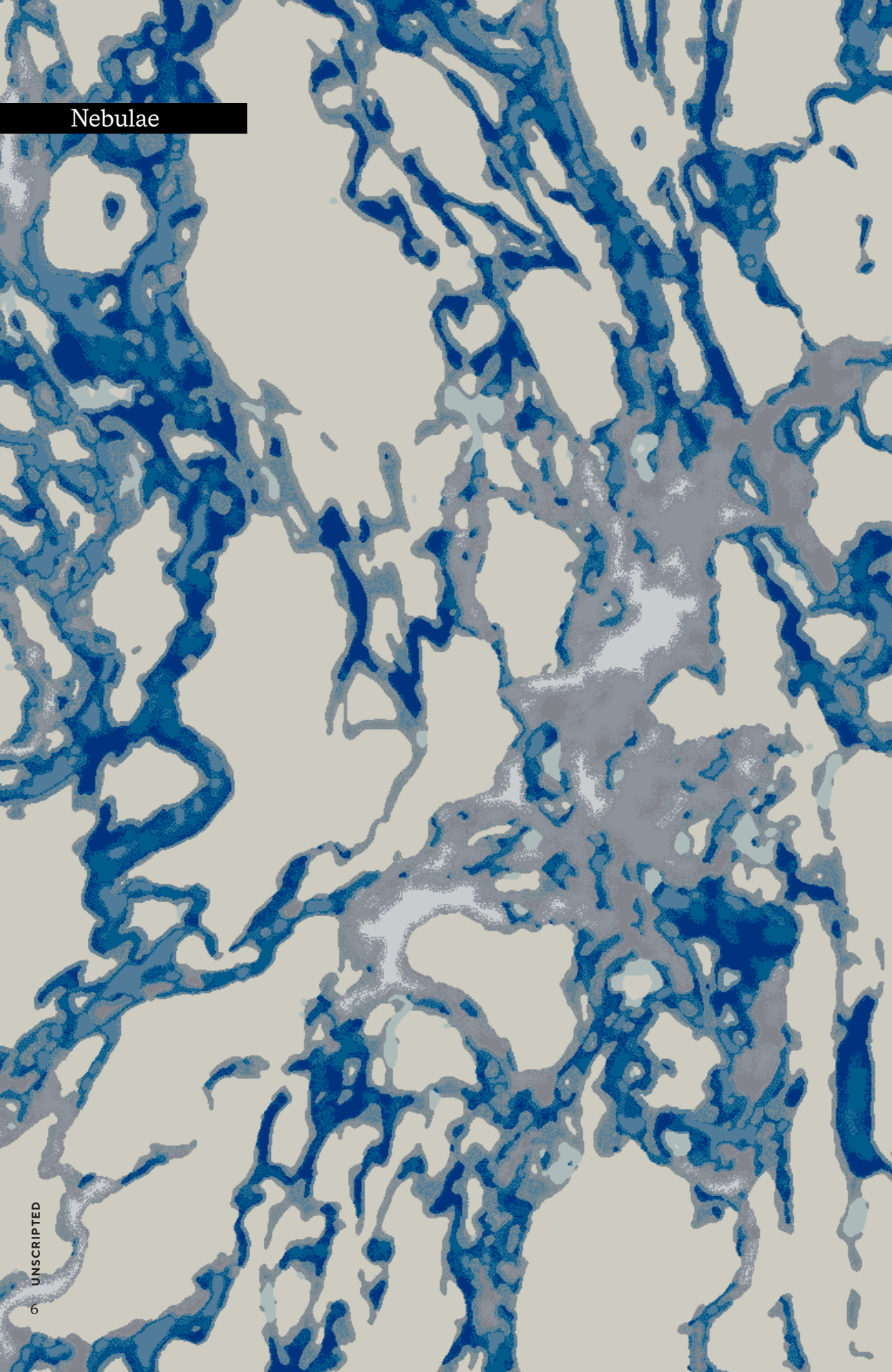
H311

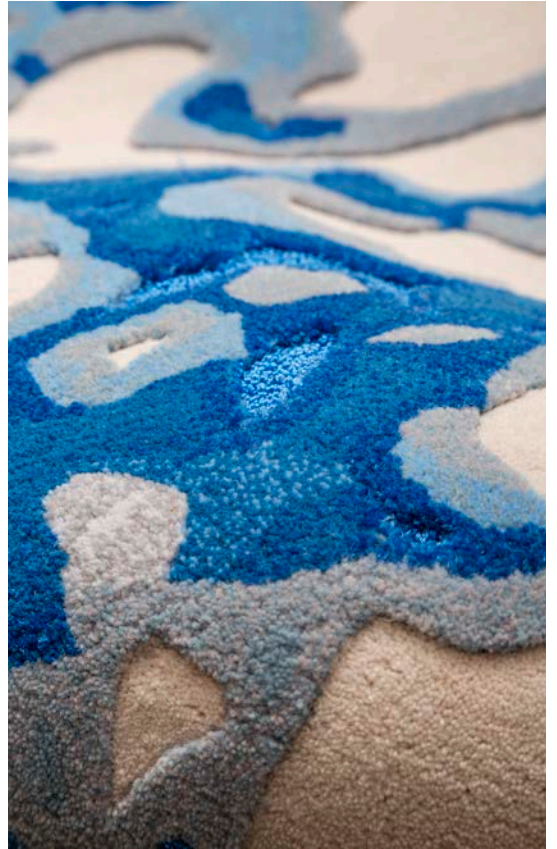
M310

K311

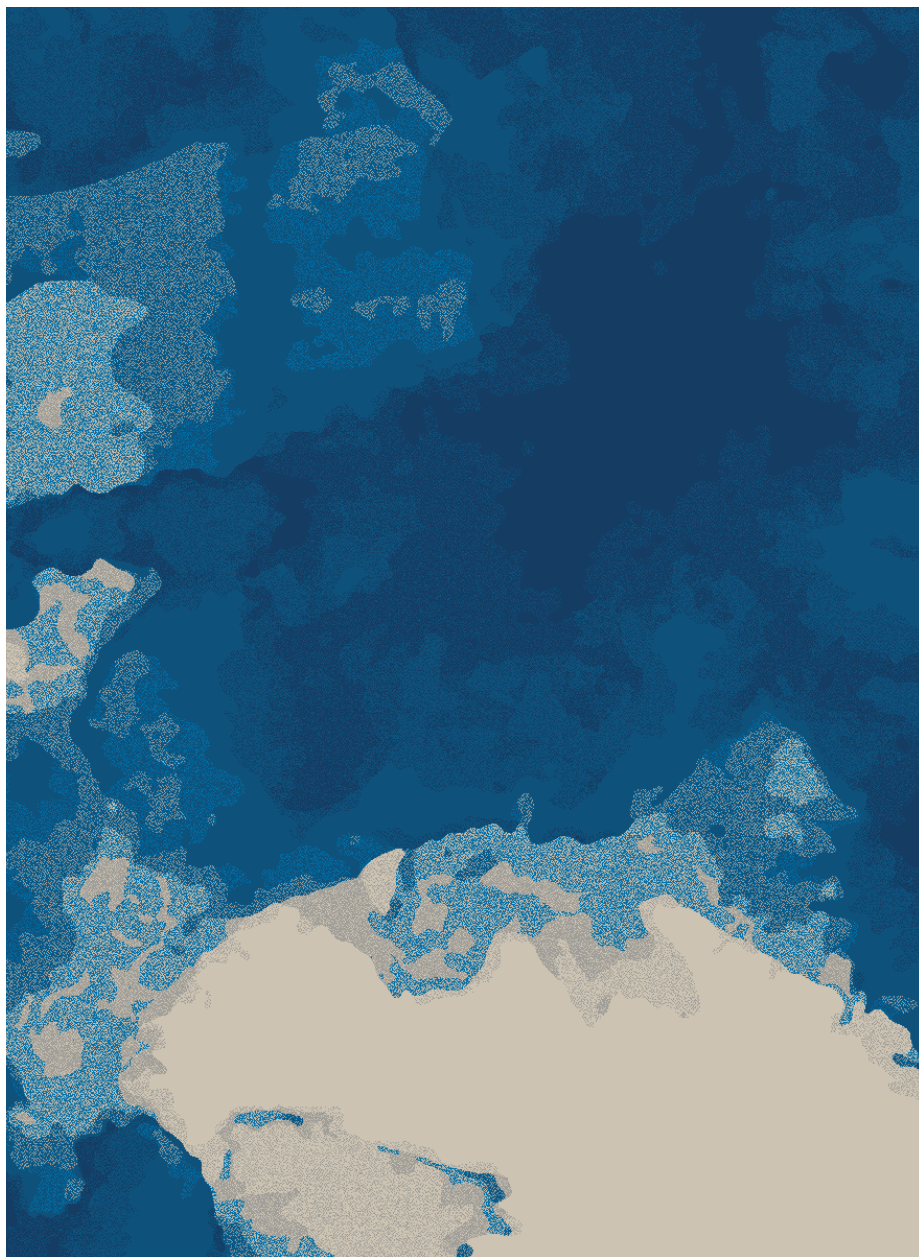
I311

Nebulae

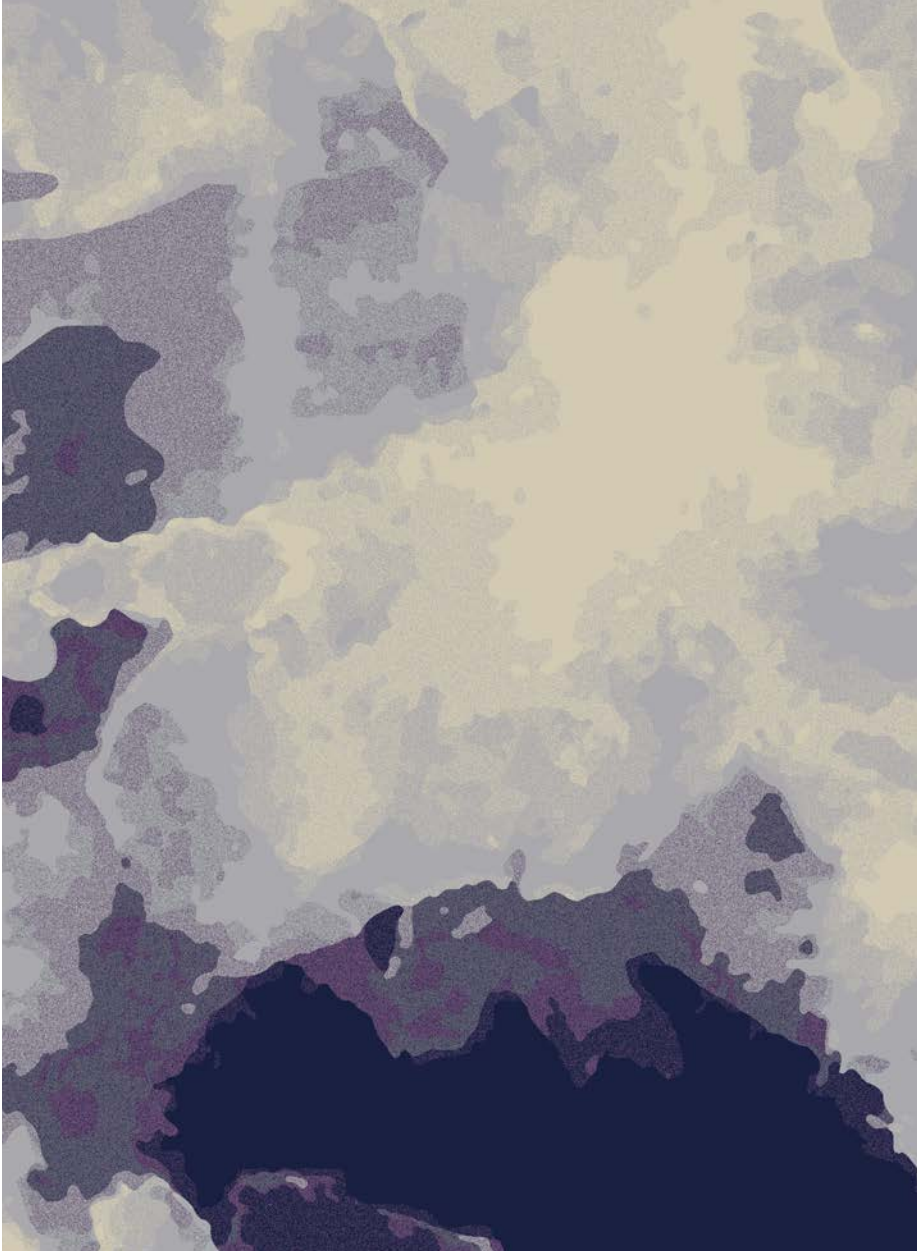




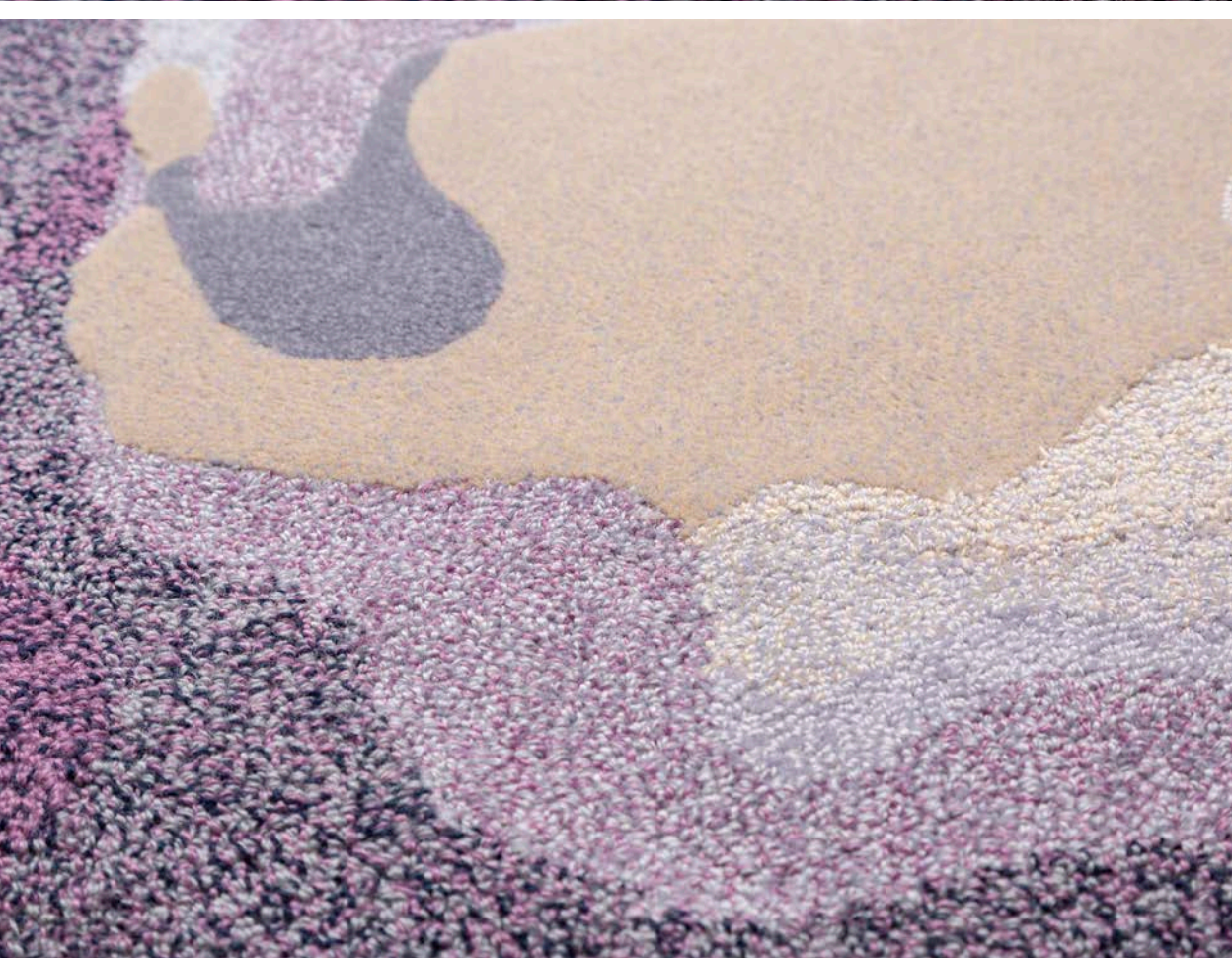




Handtufted, NH-037263-2



Handtufted: NH-037072-1





ROYAL THAI

AMERICAS

+1 800 433 2440
calhoun@royalthai.com

THAILAND

+66 2314 5402
bangkok@royalthai.com

MIDDLE EAST

+971 4 451 7659
dubai@royalthai.com

UNITED KINGDOM

+44 7741 261203
unitedkingdom@royalthai.com

SINGAPORE

+65 6235 2477
singapore@royalthai.com

HONG KONG

+852 2359 8900
hongkong@royalthai.com

INDIA

+91 124 469 3900
india@royalthai.com

ROYALTHAI.COM