



**ROYAL
THAI**

**MODULAR
AXMINSTER**

Hospitality

ABOUT

Modular Axminster

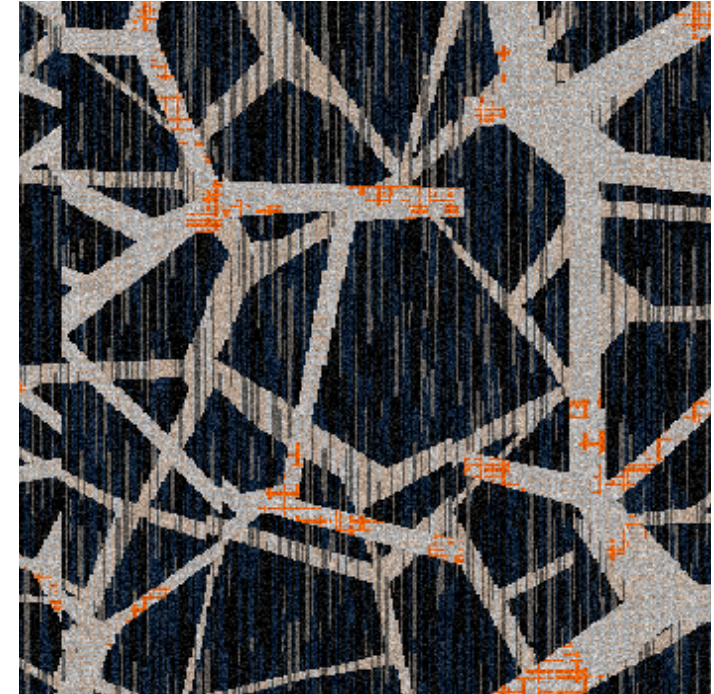
Royal Thai unsurpassed manufacturing diversity continues to evolve unique floor covering solutions for all commercial sectors, engineered to provide facility management with the best return on investment. Our unique modular axminster carpet expands the unlimited design options and durability of woven Axminster carpet into the realm of custom engineered large scale Axminster tiles. Showcasing beauty as well as dimensional stability in either 80% wool / 20% nylon pile fiber or 100% nylon pile fiber.

The product is developed to create a practical “releasable” floor covering solution to allow facility management expedient uplift & replacement of the ‘system’ for ease of maintenance and access to under a raised flooring systems. Reducing disturbance to operations through faster installation time, labor cost by up to 60% and eliminating expensive floor preparation of hard substrates prior to initial installation.

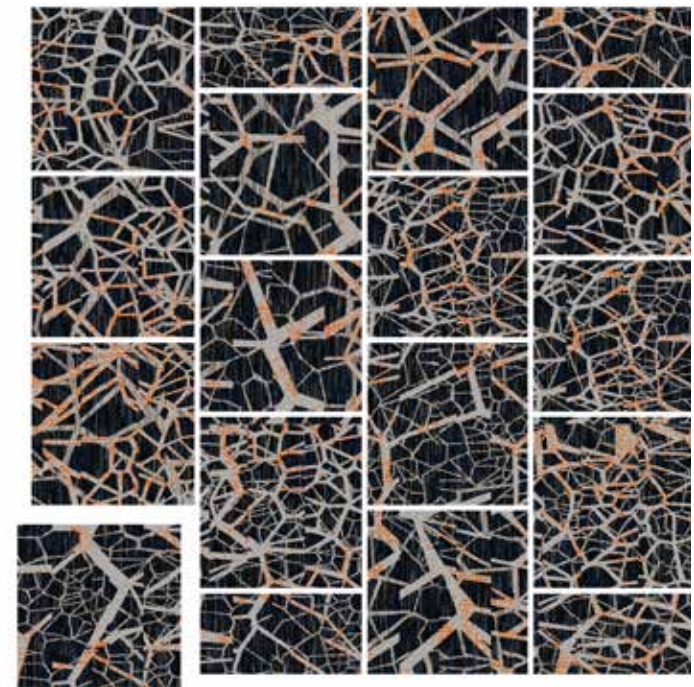
Additional benefits of Modular Axminster include:

- Customized design options
- Clear pattern and color definition of Axminster
- Luxurious quality to see and touch
- Flexible pile weight/height for diverse traffic conditions
- Optional Backing Systems
 - Premise™ backing offers:
 - Enhanced acoustical propensity
 - Reduced energy costs from increased thermal propensity
- Choice of module sizes available
- Reduced wastage factor vs. broadloom
- Excellent durability and abrasion resistance
- Easy storage and transportation logistics
- Decrease in installation and operational closure time by up to 50%
- Access to under floor cables
- Reduced cleaning and maintenance

HOTEL



NT-038621-3
Single Tile: 1M x 1M (39.36" x 39.36")
Available in 36" x 36"

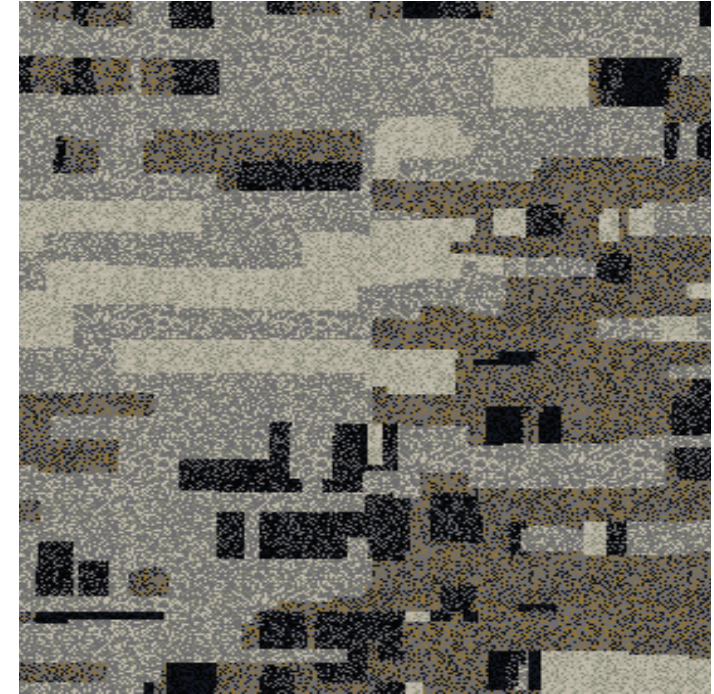


16 Tile Module
Random Cut

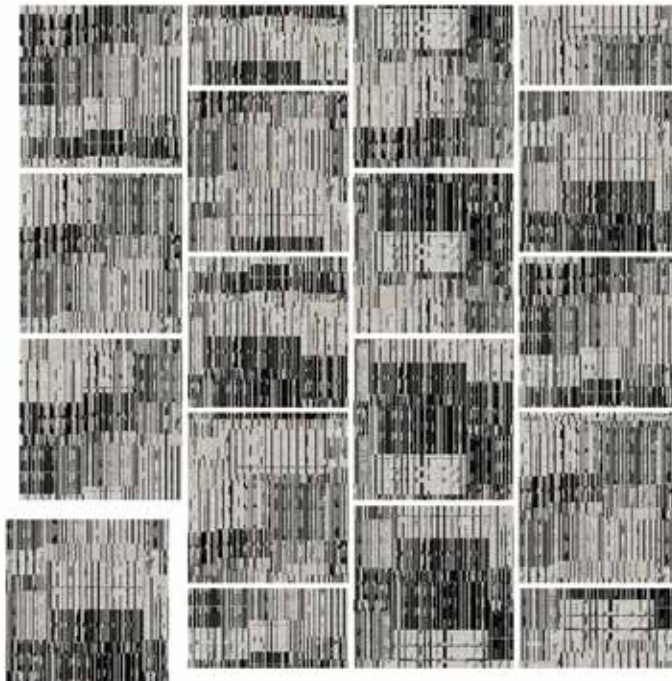




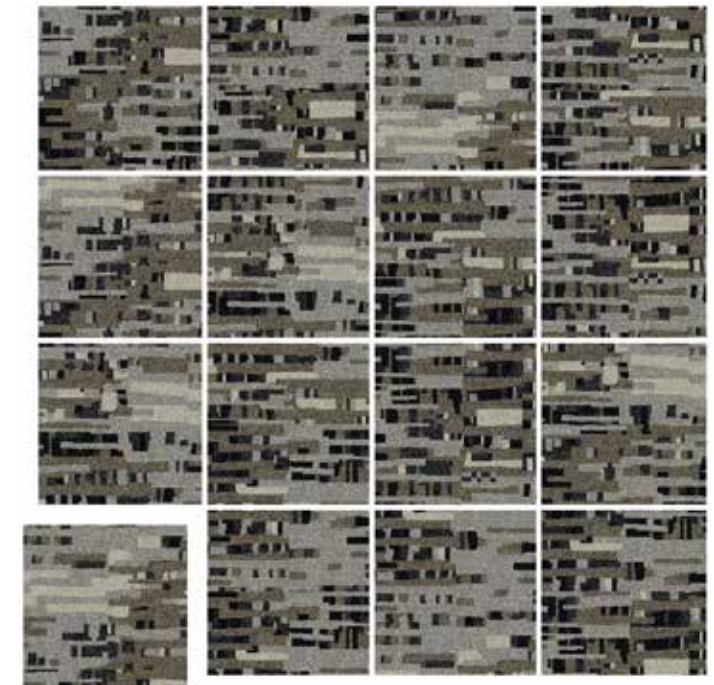
NT-038650-3
 Single Tile: 1M x 1M (39.36" x 39.36")
 Available in 36" x 36"



NT-045566-2
 Single Tile: 1M x 1M (39.36" x 39.36")
 Available in 36" x 36"

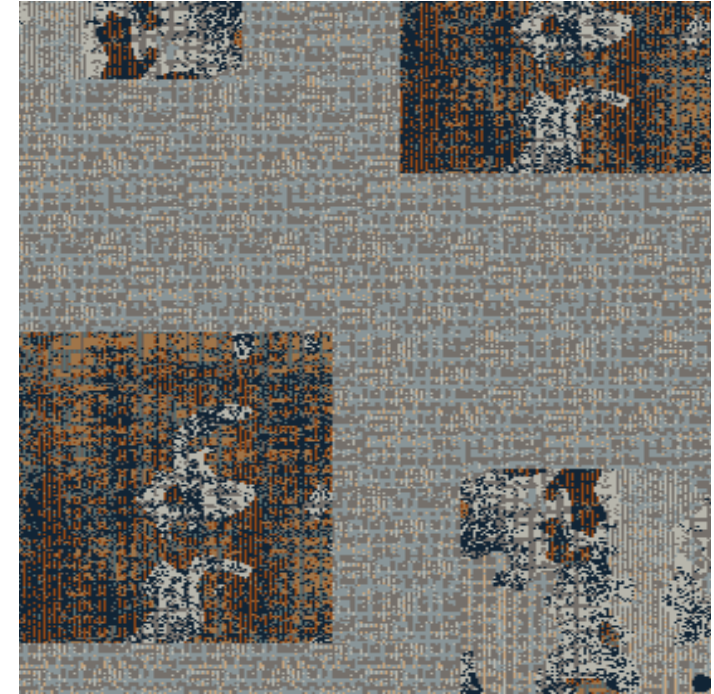


16 Tile Module
 Random Cut



16 Tile Module
 Random Cut

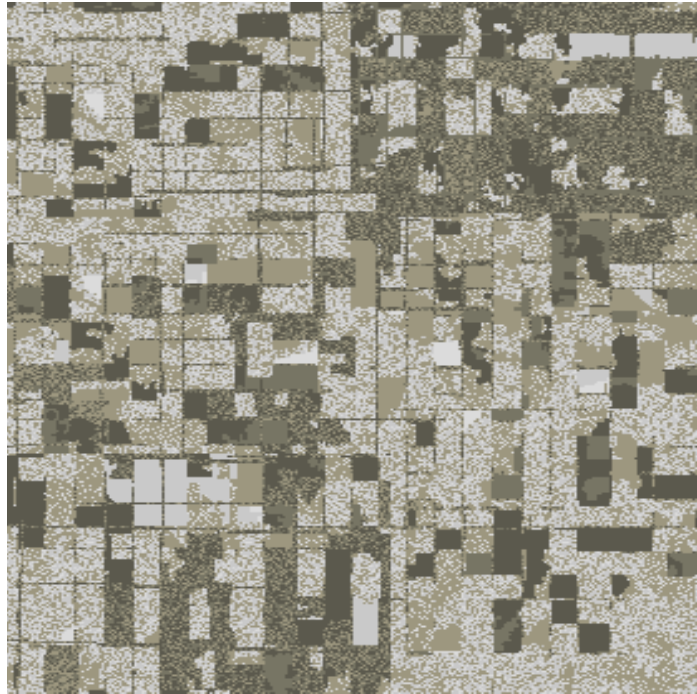




NT-045567-2
 Single Tile: 1M x 1M (39.36" x 39.36")
 Available in 36" x 36"



16 Tile Module
 Random Cut



NT-046154-1
 Single Tile: 1M x 1M (39.36" x 39.36")
 Available in 36" x 36"



16 Tile Module
 Random Cut



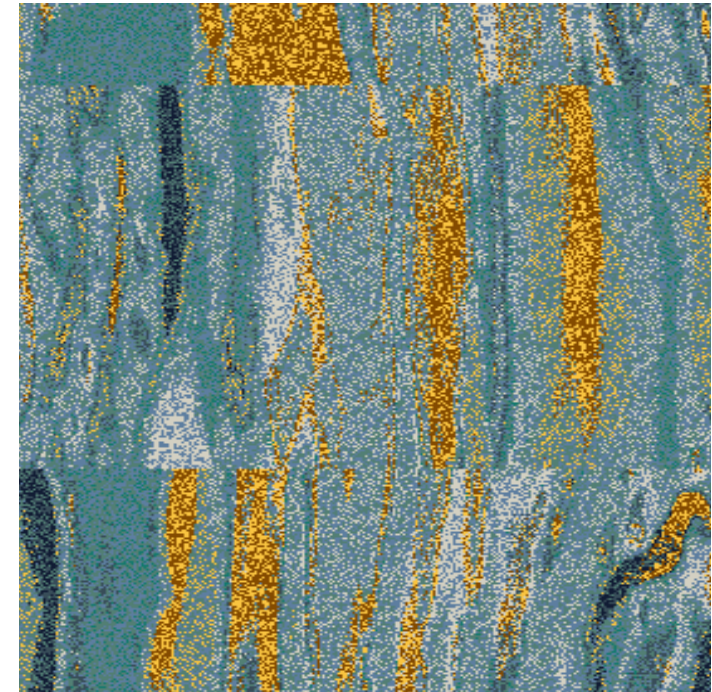




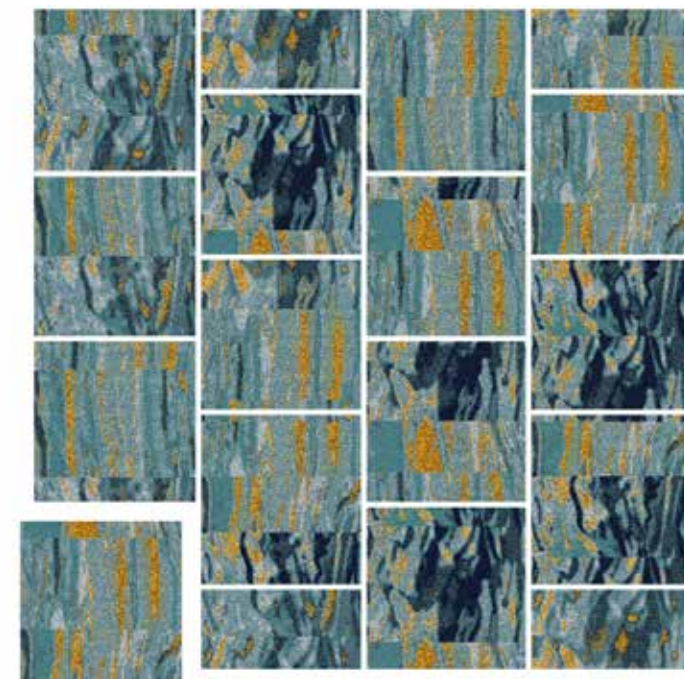
NT-046681-1
Single Tile: 1M x 1M (39.36" x 39.36")
Available in 36" x 36"



16 Tile Module
Random Cut

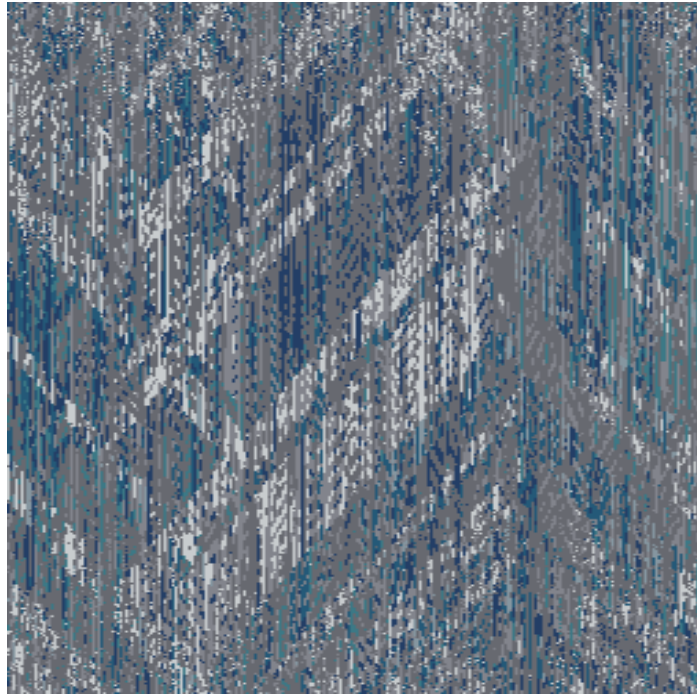


NT-046604-1
Single Tile: 1M x 1M (39.36" x 39.36")
Available in 36" x 36"



16 Tile Module
Random Cut



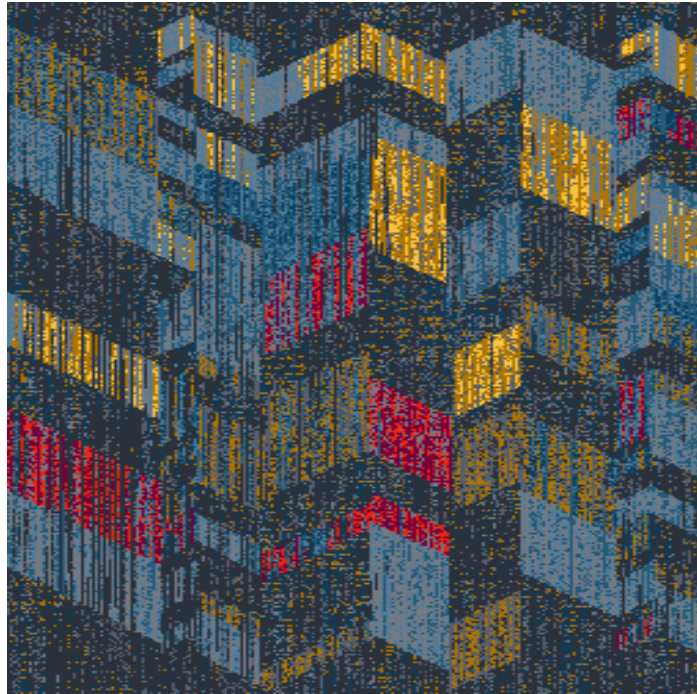


NTN045547-3
Single Tile: 1M x 1M (39.36" x 39.36")
Available in 36" x 36"

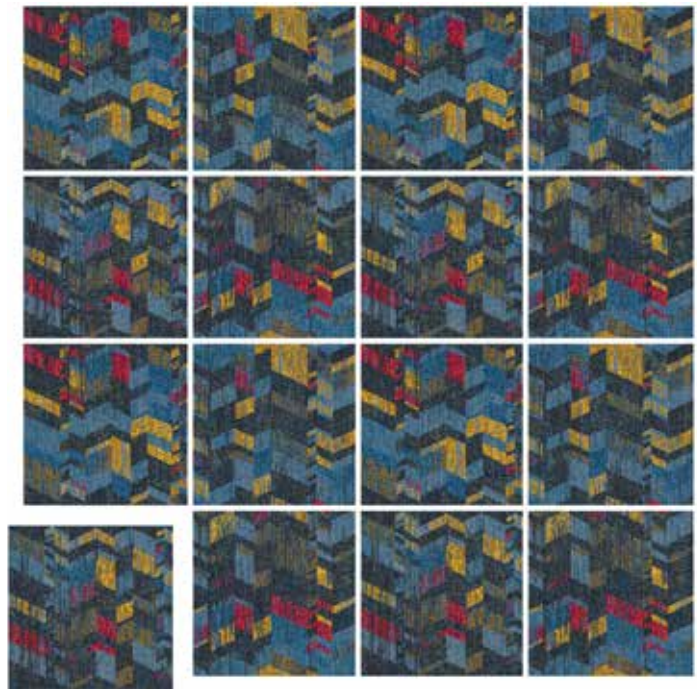


16 Tile Module
Random Cut





NTN045542-2
 Single Tile: 1M x 1M (39.36" x 39.36")
 Available in 36" x 36"

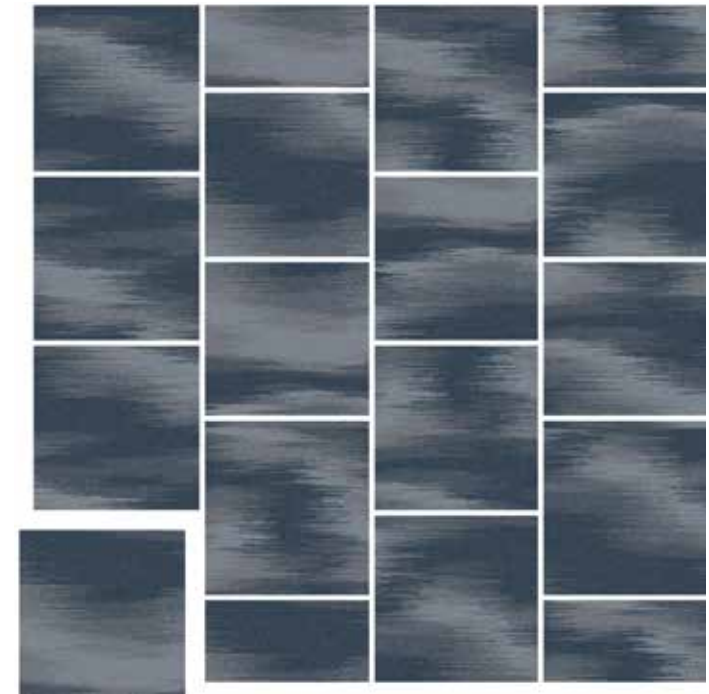


16 Tile Module
 4 Tile Repeat





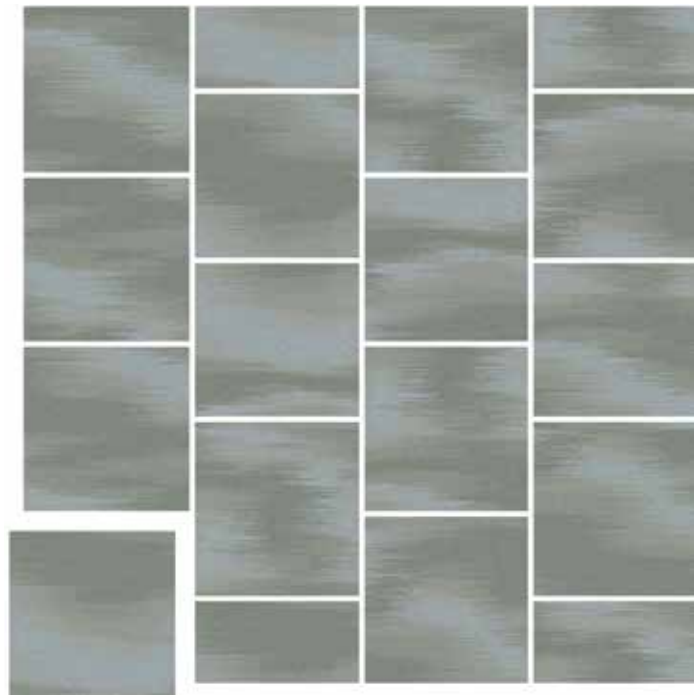
NT-045568-2
Single Tile: 1M x 1M (39.36" x 39.36")
Available in 36" x 36"



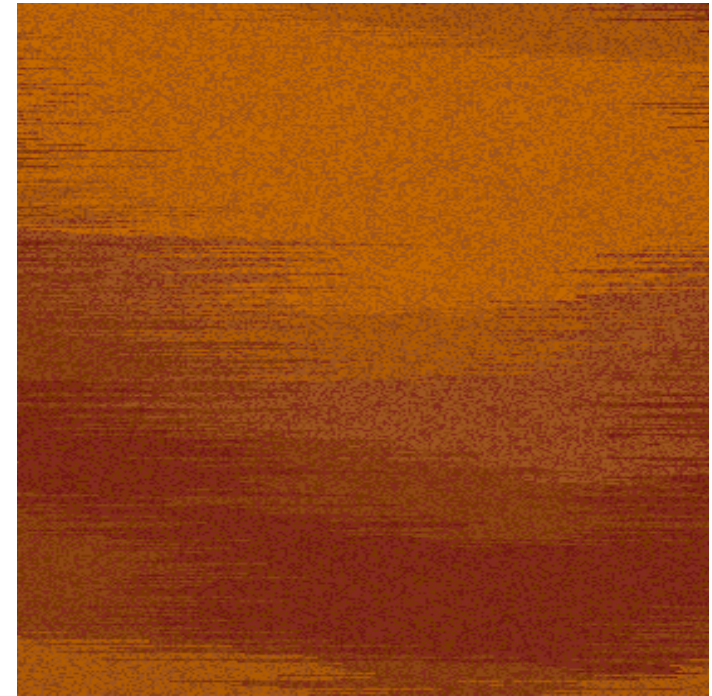
16 Tile Module
Random Cut



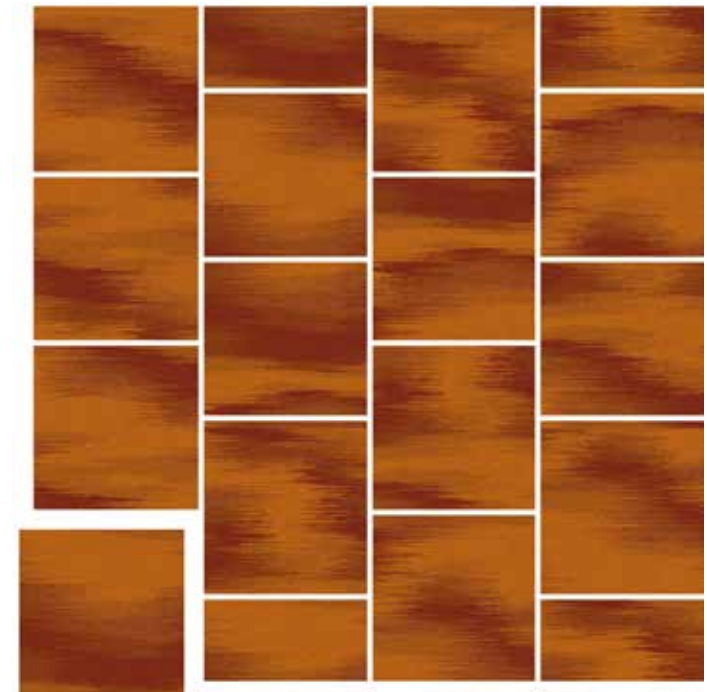
NT-045568-5
Single Tile: 1M x 1M (39.36" x 39.36")
Available in 36" x 36"



16 Tile Module
Random Cut



NT-045568-3
Single Tile: 1M x 1M (39.36" x 39.36")
Available in 36" x 36"



16 Tile Module
Random Cut



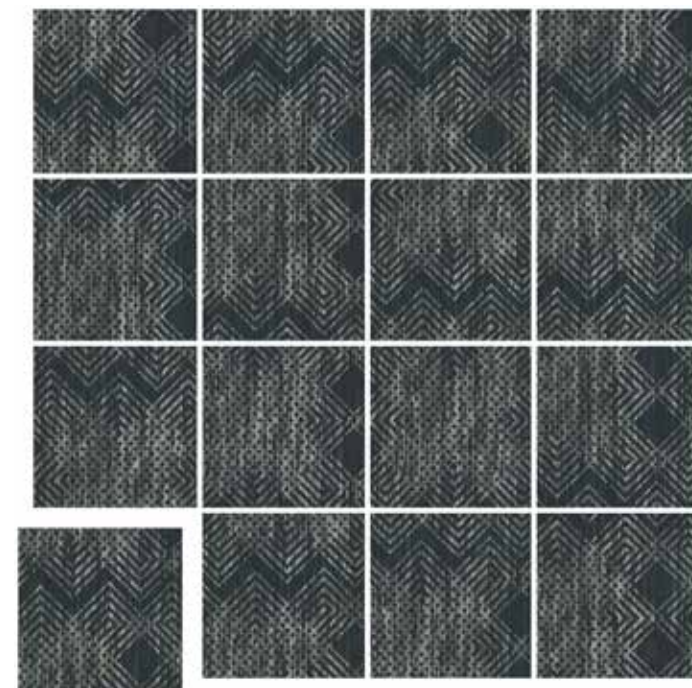
GUEST ROOMS



Modular Axminster



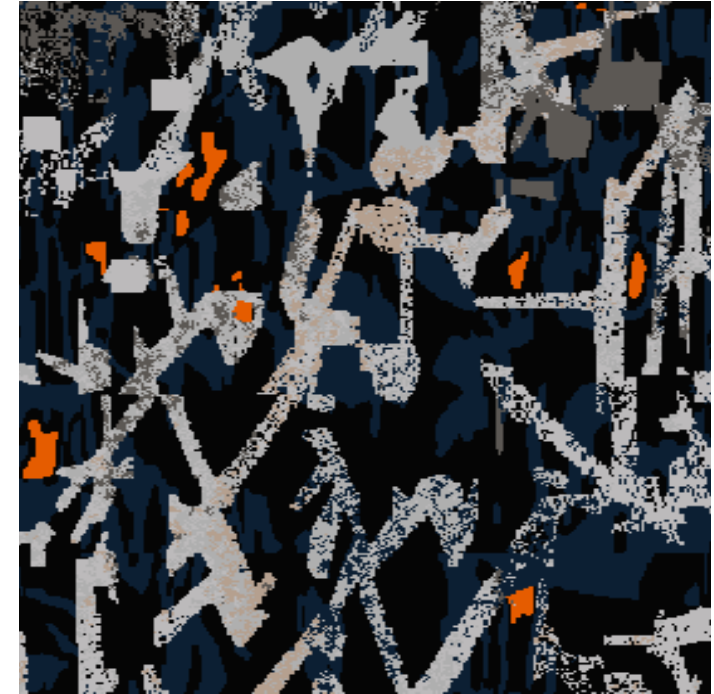
NT-048008-1
Single Tile: 1M x 1M (39.36" x 39.36")
Available in 36" x 36"



16 Tile Module
Random Cut



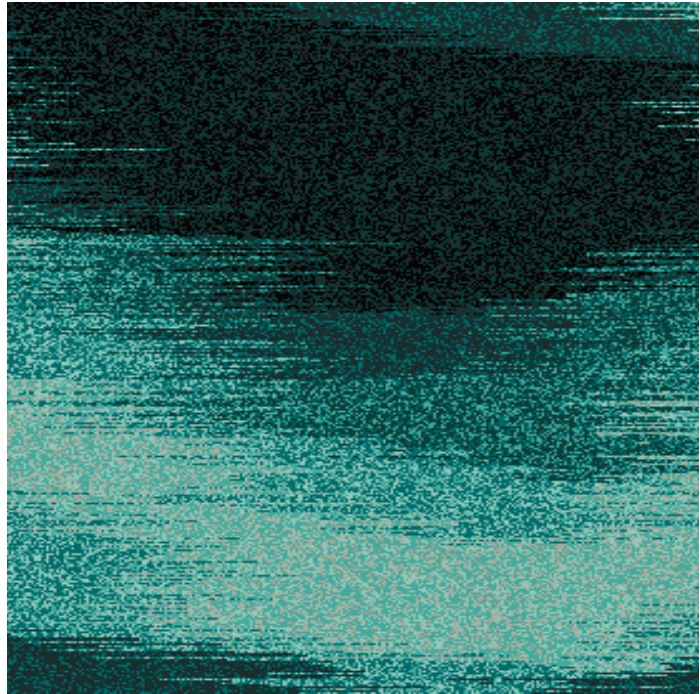
GAMING



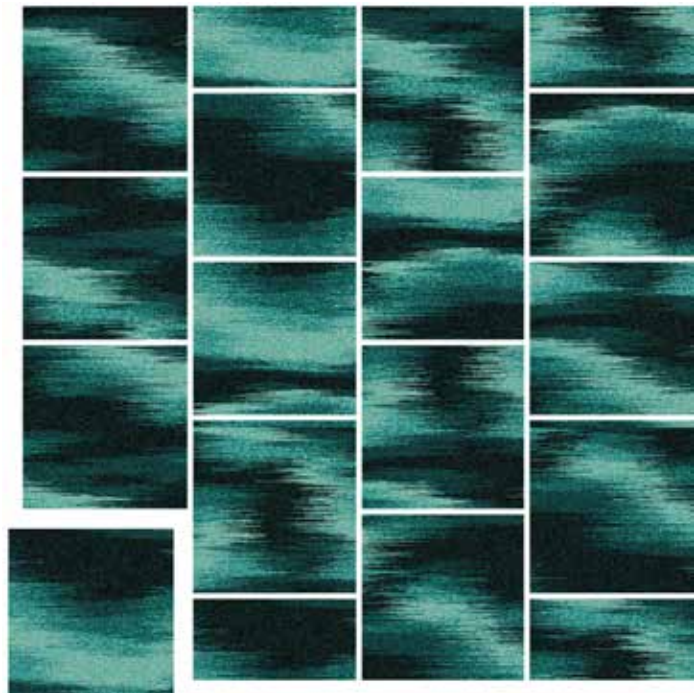
NT-045570-1
Single Tile: 1M x 1M (39.36" x 39.36")
Available in 36" x 36"



16 Tile Module
Random Cut



NT-045568-1
Single Tile: 1M x 1M (39.36" x 39.36")
Available in 36" x 36"

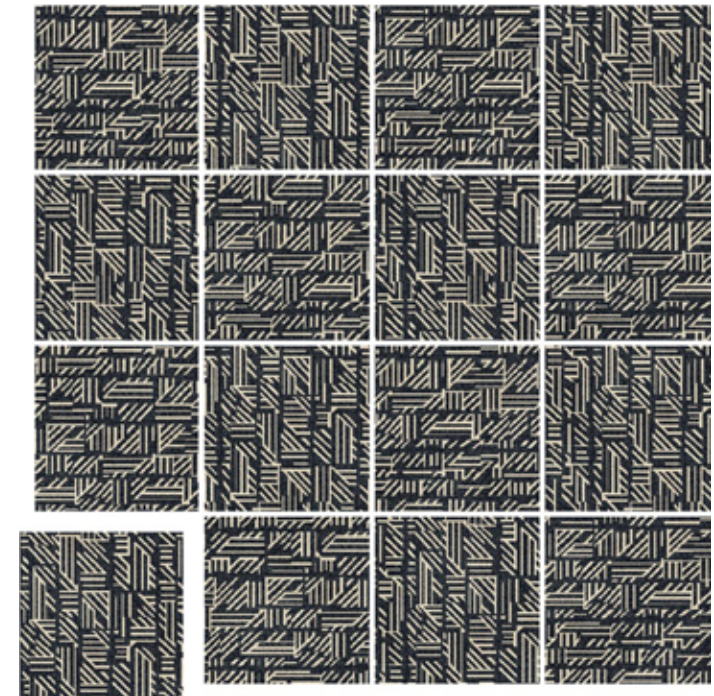


16 Tile Module
Random Cut





CU057367P001
Single Tile: 1M x 1M (39.36" x 39.36")
Available in 36" x 36"



16 Tile Module
Random Cut



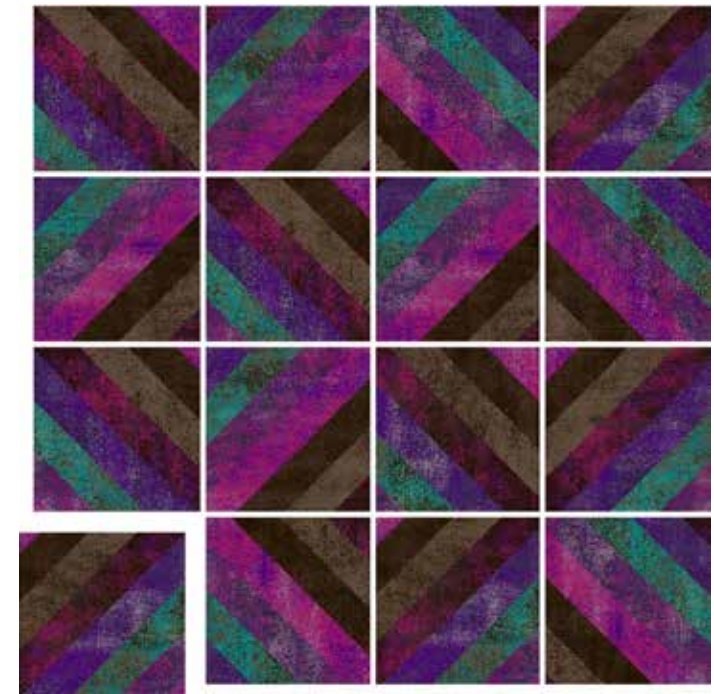
GU048521P001
Single Tile: 1M x 1M (39.36" x 39.36")
Available in 36" x 36"



16 Tile Module
Random Cut



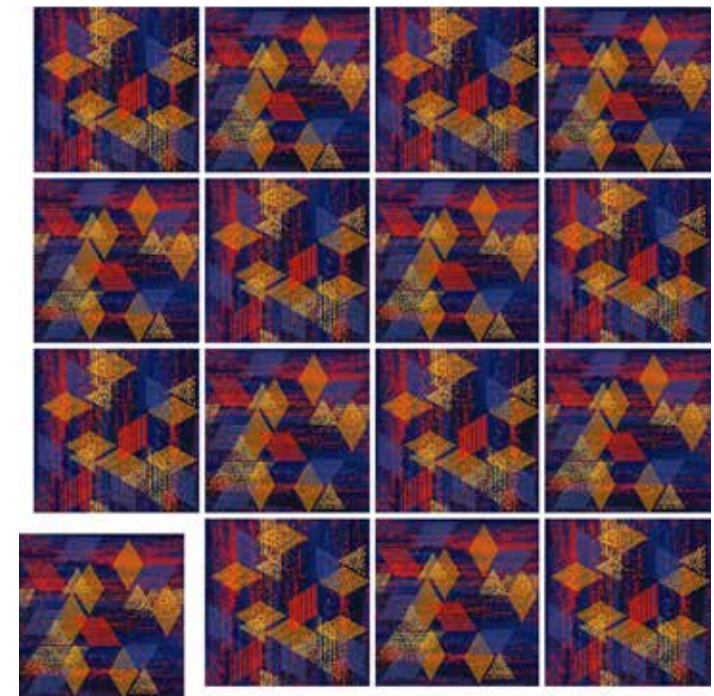
GU048521P002
 Single Tile: 1M x 1M (39.36" x 39.36")
 Available in 36" x 36"



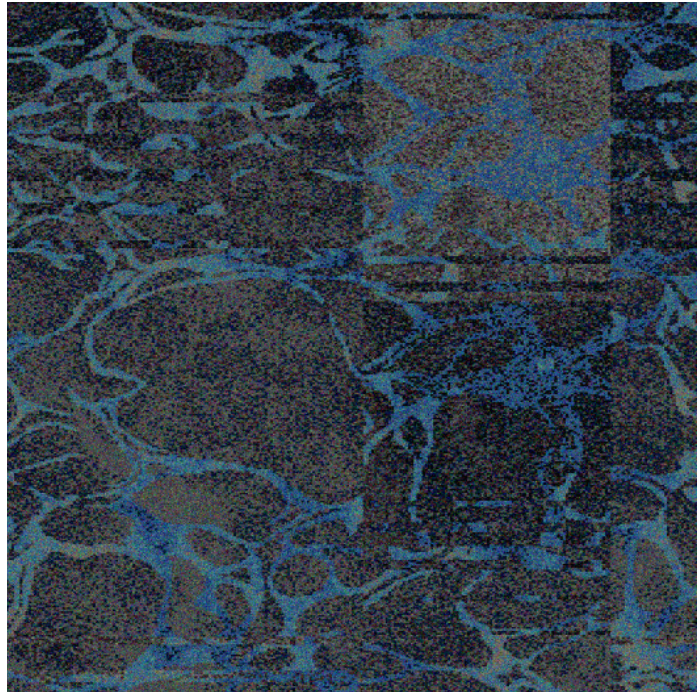
16 Tile Module
 Random Cut



GU048514P001
 Single Tile: 1M x 1M (39.36" x 39.36")
 Available in 36" x 36"



16 Tile Module
 Single Tile Quarter Turn



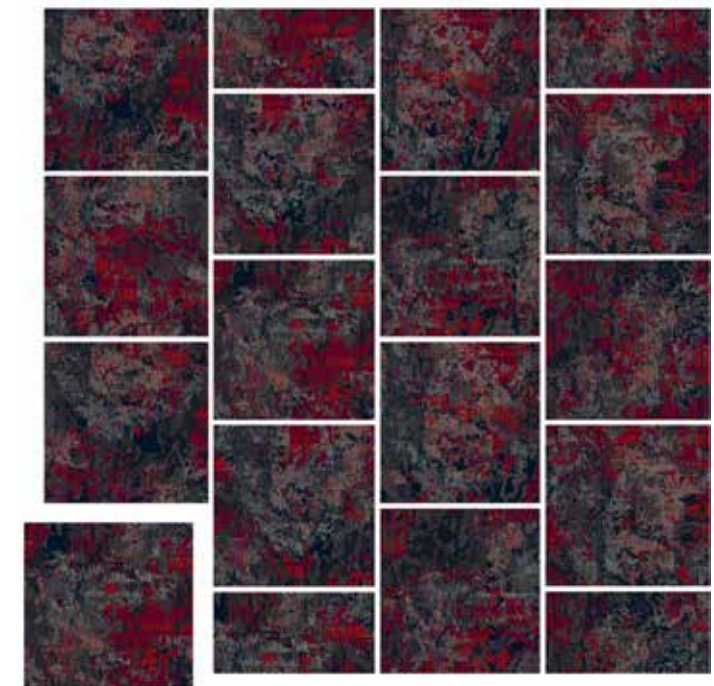
FU055288P002
Single Tile: 1M x 1M (39.36" x 39.36")
Available in 36" x 36"



16 Tile Module
Random Cut



FU055295P001
Single Tile: 1M x 1M (39.36" x 39.36")
Available in 36" x 36"



16 Tile Module
Random Cut



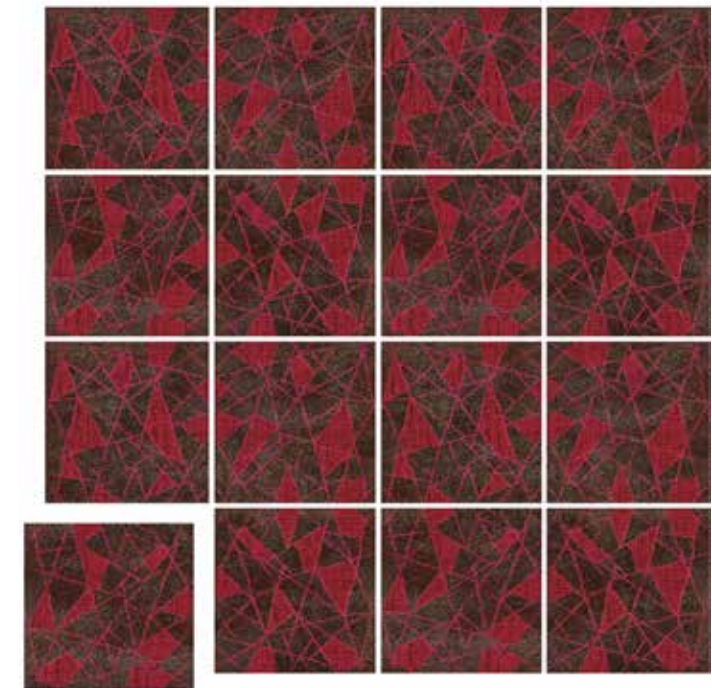
KU052729P002
 Single Tile: 1M x 1M (39.36" x 39.36")
 Available in 36" x 36"



16 Tile Module
 4 Tile Repeat



GU048519P005
 Single Tile: 1M x 1M (39.36" x 39.36")
 Available in 36" x 36"



16 Tile Module
 4 Tile Repeat

AXMINSTER TILE WITH PREMISE RECYCLED CUSHION BACKING



Made From 80% Post-Consumer Material
Reengineered from Discarded Drinking Water
Bottles Plus 5% Post-Industrial Recycled PET

LEED Credit Contribution Materials & Resources:	
Building Product Disclosure and Optimization - Environmental Product Declarations	Option 2: Demonstrating Multi-attribute Optimization: NSF140 Platinum Certified
Building Product Disclosure and Optimization - Sourcing of Raw Materials	Option 2: Bio-based Materials, ASTM D6866
Building Product Disclosure and Optimization - Material Ingredients	Option 1: Health Product Declaration Option 2: Contains no ingredients listed on the REACH authorization or candidate list
Indoor Environmental Quality:	
Low Emitting Materials	CRI Green Label Plus Certified

International Standards



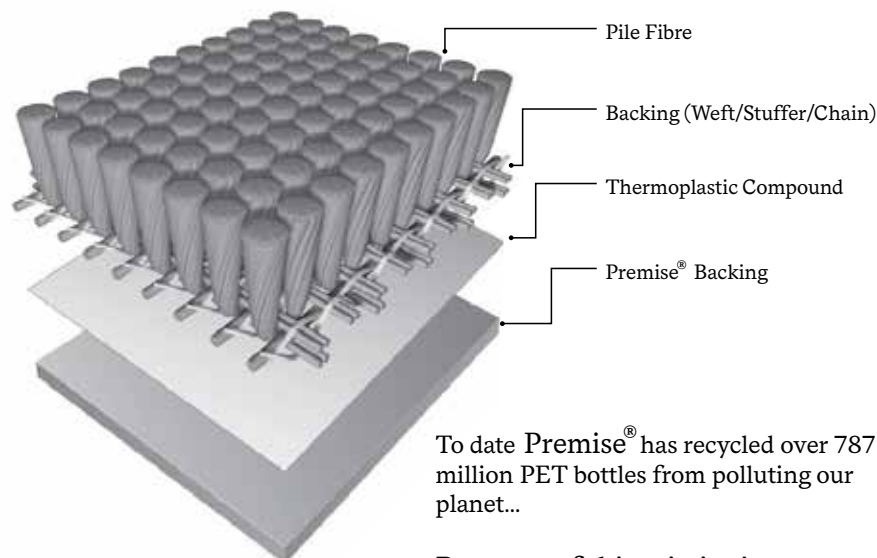
We apply strict quality control at all stages of production, in compliance with ISO 9001. However, the carpet manufacturing process is a complex series of operations and variations in the specifications could occur. This will not have any detrimental effect on the product. We reserve the right to amend this specification without prior notice.

SPECIFICATIONS

80% WOOL/20% NYLON 6,6 PREMISE™ BACKING		80% WOOL/20% NYLON 6,6 PREMISE™ BACKING		80% WOOL/20% NYLON 6,6 PREMISE™ BACKING	
Quality	Axminster Tile w/Premise™ Back	Quality	Axminster Tile w/Premise™ Back	Quality	Axminster Tile w/Premise™ Back
Construction	Gripper Axminster	Construction	Gripper Axminster	Construction	Gripper Axminster
Pile Content	80% Wool / 20% Nylon 6,6	Pile Content	80% Wool / 20% Nylon 6,6	Pile Content	80% Wool / 20% Nylon 6,6
Yarn Count	R 660/2 Tex, 2/47's Dewsbury	Yarn Count	R 660/2 Tex, 2/47's Dewsbury	Yarn Count	R 660/2 Tex, 2/47's Dewsbury
Pitch Per Inch	7 (27.6 per dm)	Pitch Per Inch	7 (27.6 per dm)	Pitch Per Inch	7 (27.6 per dm)
Rows Per Inch	9 (35.5 per dm)	Rows Per Inch	10 (39.4 per dm)	Rows Per Inch	11 (39.4 per dm)
Pile Height	.250" (6.4 mm)	Pile Height	.250" (6.4 mm)	Pile Height	.250" (6.4 mm)
Pile Weight	36.2 oz/sy (1227 gm/sm)	Pile Weight	40.2 oz/sy (1363 gm/sm)	Pile Weight	44.20 oz/sy (1500 gm/sm)
Total Weight	132.3 oz/sy (4487 gm/sm)	Total Weight	137.7 oz/sy (4669 gm/sm)	Total Weight	143.3 oz/sy (4858 gm/sm)
Backing Thickness	0.351" (8.9 mm)	Backing Thickness	0.351" (8.9 mm)	Backing Thickness	0.351" (8.9 mm)
Total Thickness	0.493" (12.5 mm)	Total Thickness	0.493" (12.5 mm)	Total Thickness	0.493" (12.5 mm)
Tuft Density	63	Tuft Density	70	Tuft Density	77
Backing Yarns	Polyester/ Polypropylene	Backing Yarns	Polyester/ Polypropylene	Backing Yarns	Polyester/ Polypropylene
Backing Structure	Premise™ 80% Post Consumer Recycled Content	Backing Structure	Premise™ 80% Post Consumer Recycled Content	Backing Structure	Premise™ 80% Post Consumer Recycled Content
Tile Size	50 x 50 cm. and 60 x 60 cm.	Tile Size	50 x 50 cm. and 60 x 60 cm.	Tile Size	50 x 50 cm. and 60 x 60 cm.
Flammability	ASTM D2859 CPSC FF 1-70 Pill Test				
Radiant Panel	ASTM E-648 Class I				
Smoke Density	ASTM E662-01 Smoke Density <450				
Air Quality	CRI Green Label Plus				
Electrostatic Propensity	AATCC 134/ISO 6356 Permanent Anti-Stat Less Than 3.5 KV				
Insect Resistance	Fully Mothproofed				
LEED	Credits 4.3, 2.1/2.2, 4.1/4.2, 6				
International Standards	ISO 9001:2000 / ISO 14001:2004				

Also available in 100% 6.6 Nylon, please consult your Royal Thai Representative for the specification that best suits your project.

Axminster with Premise® Backing



To date Premise® has recycled over 787 million PET bottles from polluting our planet...

Be a part of this mission!

Premise® Outstanding Features

- > 85% recycled content backing
- > 100% recyclable
- > Superior Acoustical Propensity backing outperforms hardback tile by 150% to 175% per Green Star IEQ10 internal noise level requirements
- > Excellent Dimensional Stability BS EN 986 less than 0.15%
- > Compliance to Indoor Air Quality by CRI Monitoring program
- > Cushioning reduces wear and tear, fiber crush and user fatigue
- > Premise® backed modular axminster carpet contribute up to 6 LEED points

Projects in United States

- Ameristar Council Bluffs, Council Bluffs IA
- Boyd's Gold Coast Hotel and Casino, Las Vegas NV
- Casino Arizona, Scottsdale AZ
- Casino Queen, East St. Louis IL
- Desert Diamond Casino, Tucson AZ
- Fort Hall Casino, Fort Hall ID
- Gardens Casino, Hawaiian Gardens CA
- Harrah's Casino - Las Vegas, NV
- Isle of Capri Casinos (various US locations)
- Lone Butte Casino - Chandler, AZ
- Lotus Casino, Sacramento CA
- Niagara Falls Casino, New York
- Pechanga Hotel and Casino, Temecula CA
- The Bicycle Club Casino, Bell Gardens CA
- The Venetian Hotel and Casino, Las Vegas NV
- The Mansion at MGM, Las Vegas NV
- The Palazzo Hotel and Casino, Las Vegas NV
- Tulalip Casino, Marysville WA
- Twin Rivers Casino, Lincoln RI
- Vee Quiva Casino, Laveen AZ
- Viejas Hotel and Casino, Alpine CA
- We-Ko-Pa Casino - Fort McDowell, AZ
- Wild Horse Pass Casino - Chandler, AZ
- Wynn Encore, Las Vegas NV

International Projects

- Aquis Casino in Canberra, Australia
- Grand Lisboa, Macau
- Marina Bay Sands, Singapore
- MGM, Macau
- Sands, Macau
- SBM, Monte Carlo
- Scarborough Casino, UK
- Solaire Resort and Casino, Philippines
- Star Vegas Resort and Casino, Cambodia
- Venetian Cotai, Macau
- Wynn, Macau

ROYAL THAI

AMERICAS

+1 800 433 2440
calhoun@royalthai.com

THAILAND

+66 2314 5402
bangkok@royalthai.com

MIDDLE EAST

+971 4 451 7659
dubai@royalthai.com

UNITED KINGDOM

+44 7741 261203
unitedkingdom@royalthai.com

HONG KONG

+852 23598900
hongkong@royalthai.com

INDIA

+91 124 469 3900
india@royalthai.com

SINGAPORE

+65 6235 2477
india@royalthai.com

ROYALTHAI.COM