

HAWAI'I LAND TRUST, NĀ KĀLAI WA'A, & KOHALA COMMUNITIES

OLA MAHUKONA

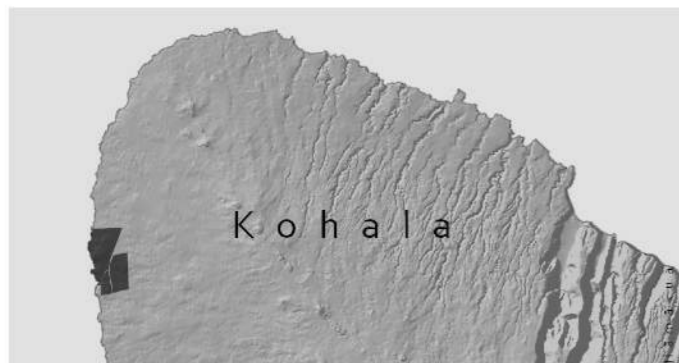
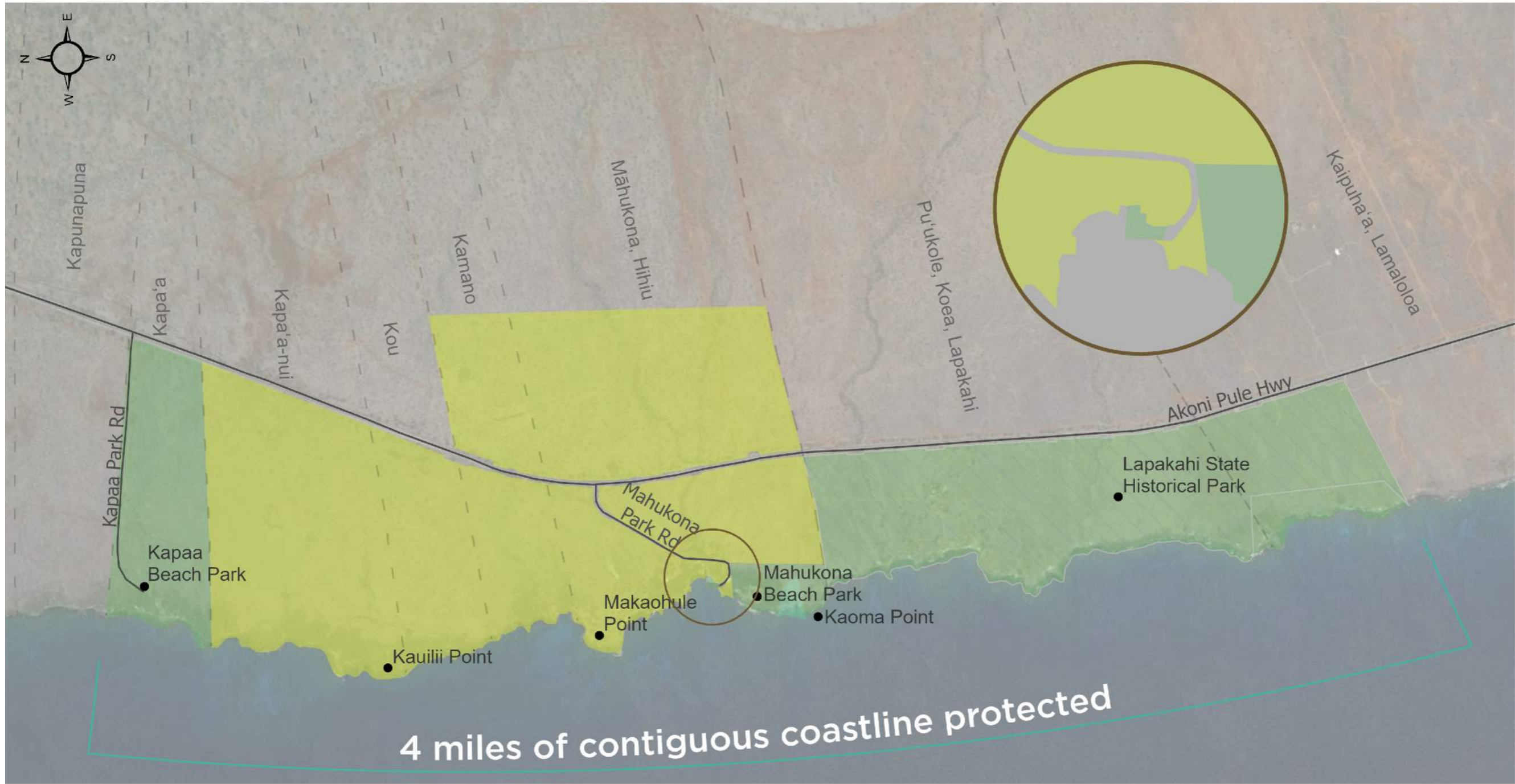
A PLACE WHERE CULTURE AND THE NATURAL
ENVIRONMENT THRIVE FOR GENERATIONS



HAWAI'I LAND TRUST

MAHUKONA NAVIGATION AND ECOLOGICAL COMPLEX

KAPAA NUI, KOU, KAMANO, MAHUKONA, HIHIU, AND KAOMA AHUPUAA, KOHALA, HAWAII ISLAND



Map Key

- Project Area (642 acres)
- State of Hawaii
- United States of America
- Ahupuaa



EXECUTIVE SUMMARY

LOCATION: NORTH KOHALA COASTLINE, HAWAI'I ISLAND

LAND: 642 ACRES

COAST: THE PROTECTION OF MAHUKONA WILL CREATE A CONTIGUOUS 4-MILE STRETCH OF PROTECTED COASTLINE

CONSERVATION STRATEGY: FEE PURCHASE BY HAWAI'I LAND TRUST, 501(C)(3), WITH A CONSERVATION EASEMENT HELD BY THE COUNTY OF HAWAI'I, AND STEWARDSHIP & EDUCATIONAL PARTNERSHIPS WITH NĀ KĀLAI WA'A, LOCAL SCHOOLS, COLLEGES & RESEARCHERS, AND OTHER VALUES ALIGNED ORGANIZATIONS.

CURRENT LANDOWNER: THE CURRENT OWNER, AN INVESTOR IN MAHUKONA'S RESORT DEVELOPMENT PLANS, HAS SIGNED A PURCHASE AND SALE AGREEMENT WITH HAWAI'I LAND TRUST.

SIGNIFICANCE: A TRADITIONAL NAVIGATION CENTER FOR THE PACIFIC, INCLUDING 175 IDENTIFIED HISTORIC SITES; 4 HEIAU (TEMPLES); NUMEROUS SHRINES, VILLAGES, FARMING SITES; BURIALS; AND ANCIENT TRAILS. MAHUKONA SUPPORTS NATIVE AND ENDANGERED MARINE SPECIES, BIRDS, PLANTS AND BATS. IT IS CHERISHED ANCESTRAL LAND WHERE ALL WILL BE WELCOMED TO CARE FOR THE LAND, PERPETUATE HAWAIIAN CULTURE, AND GATHER AS ONE COMMUNITY.

FUTURE VISION: HOME TO HAWAI'I'S FIRST MODERN SCHOOL OF NAVIGATION AND A **PLACE WHERE CULTURE AND THE NATURAL ENVIRONMENT THRIVE IN PERPETUITY.**

MAP (OPPOSITE): THE 642 ACRE PROJECT AREA IS SHADED IN LIME GREEN, FILLING IN THE MISSING GAP FOR A CONTIGUOUS PROTECTED COASTLINE SPANNING 4 MILES FROM KAPA'A BEACH PARK TO LAPAKAHI PARK.

A scenic view of a rocky coastline with clear turquoise water and a bright blue sky. The water is exceptionally clear, showing the dark rocks and coral reefs beneath the surface. The sky is a vibrant blue with a few wispy white clouds. The overall atmosphere is serene and beautiful.

OUR CAMPAIGN DEPENDS ON YOU

THE MAHUKONA PROJECT PRESENTS A ONCE-IN-A-LIFETIME OPPORTUNITY TO MAKE A
DIRECT AND IMMEDIATE IMPACT FOR PEOPLE AND NATURE IN HAWAI'I.

THIS IMPACT WILL LAST FOR GENERATIONS.

MAHUKONA FUNDING SUMMARY

LAND PURCHASE		\$13,000,000
LAND STEWARDSHIP & EDUCATION ENDOWMENT		\$5,000,000
HISTORIC BUILDING RESTORATION FOR COMMUNITY USE		\$1,000,000
URGENT REPAIRS, WATER, INFRASTRUCTURE, & WILDFIRE SAFETY		\$750,000
LAND PROTECTION PROJECT COSTS	+	\$250,000

TOTAL NEED: \$20,000,000

MINUS FUNDS SECURED AS OF 6/1/23: - \$19,308,244

REMAINING FUNDS NEEDED: \$691,756

LEAD GIFT OPPORTUNITIES

KA HŌKŪ
\$2,000,000

**PŌHAKU
MANAMANA**
\$1,000,000

**PŌHAKU
MANAMANA**
\$1,000,000

PAEPAE
\$500,000

PAEPAE
\$500,000

PAEPAE
\$500,000

PĀNĀNĀ
\$250,000

PĀNĀNĀ
\$250,000

PĀNĀNĀ
\$250,000

HAWAI'I LAND TRUST INVITES & ENCOURAGES THE NINE LEADING DONORS TO PARTICIPATE IN ONE OF NINE *OLA KA INOA*—POWER IN THE NAME—WORKSHOPS FACILITATED BY PROJECT PARTNERS WITH A CONNECTION TO MAHUKONA ALLOWING THE COLLECTIVE INTENTIONS TO CONTRIBUTE TO MAHUKONA THROUGH THE POWER OF A NAME. THE INTENTION A NAME HOLDS, THE GENERATIONS IT CONNECTS TO, AND THE NEW IDENTITY IT IS ABOUT TO EMBODY—IN HAWAIIAN BELIEF, IT'S THESE ELEMENTS THAT WE WANT TO INSTILL INTO NAMES TO INSPIRE SUCCESS OF PLACE. LEADING DONORS MAY ALSO CHOOSE TO ATTRIBUTE THEIR PERSONAL AND FAMILY NAMES.

OLA KA INOA: NAMING OPPORTUNITIES

KA HŌKŪ (CELESTIAL ALIGNMENT) \$2M GIFT:

THE LEAD \$2M GIFT PROVIDES AN OPPORTUNITY TO NAME THE NOTABLE MODERN STRUCTURE OVERLOOKING KO'A HEIAU HOLOMOANA. THIS STRUCTURE STANDS IN A LOCATION TRADITIONALLY USED FOR NAVIGATIONAL CULTURAL CEREMONIES. WITH MAHUKONA'S PROTECTION, THIS STRUCTURE WILL ONCE AGAIN BE USED TO HOST CULTURAL CEREMONIES PRIOR TO LONG VOYAGES. A PLAQUE WILL ADORN THE STRUCTURE, TELLING THE STORY OF ITS NAME AND THE GENEROUS DONOR.

PŌHAKU MANAMANA (UPRIGHT STONE CELESTIAL INTERSECTION) \$1M GIFT:

THE TWO LEAD \$1M GIFTS PROVIDE NAMING OPPORTUNITIES FOR AN ENDOWED MAHUKONA LAND STEWARD AND AN EDUCATOR POSITION. THESE POSITIONS WILL BE PERMANENT HILT STAFF AT MAHUKONA. SEPARATE PLAQUES TELLING THE STORY OF EACH NAMED POSITION AND THE DONOR WILL BE PLACED AT PROMINENT LOCATIONS ON THE PROPERTY.

PAEPAE (OBSERVATION PLATFORM) \$500K GIFT:

THE THREE LEAD \$500,000 GIFTS PROVIDE NAMING OPPORTUNITIES FOR ONE OF THE FOLLOWING STRUCTURES: A) THE HISTORIC RAILROAD DEPOT, WHICH WILL FUNCTION AS A SPACE TO HOST EDUCATIONAL PROGRAMS, STEWARDSHIP GROUPS, PARTNERS, AND RESEARCHERS; B) THE WATER TANK, PROVIDING WATER TO THE ENTIRETY OF THE PROPERTY AND COASTAL WILDFIRE MANAGEMENT; C) THE HISTORIC MOLASSES TANK, A STANDOUT FEATURE ALONG THE PUBLIC ACCESS TRAIL WITH COMMUNITY MURAL STORYTELLING PLANS; OR D) THE COLLABORATIVE COMMUNITY-BASED WORK SPACE LOCATED ADJACENT TO THE COTTAGES. PLAQUES WILL ADORN EACH NAMED STRUCTURE, TELLING THE STORY OF ITS NAME AND DONOR.

PĀNĀNĀ (PLACE OF OBSERVATION) \$250K GIFT:

THE THREE LEAD \$250,000 GIFTS PROVIDE NAMING OPPORTUNITIES FOR EACH COTTAGE. THE COTTAGES WILL HOST EDUCATIONAL PROGRAMS, STEWARDSHIP AND CULTURAL GROUPS, AND RESEARCHERS. A PLAQUE WILL ADORN EACH NAMED STRUCTURE, TELLING THE STORY OF ITS NAME AND DONOR.

ADDITIONAL DONOR RECOGNITION OPPORTUNITIES

KILO HŌKŪ \$100K GIFTS: PERSONAL PLAQUE ON ONE OF THREE BENCHES ALONG COASTAL TRAIL OVERLOOKING THE OCEAN.

MO'O \$50K GIFTS: RECOGNITION ON ONE OF FOUR INTERPRETIVE SIGNS ALONG COASTAL TRAIL.

THE FOLLOWING FOUR GIFTS INVOLVE NATIVE PLANTS PLANTED IN THE DONOR'S HONOR. HILT WILL INVITE EACH DONOR TO PLANT WITH US, PROVIDING LOCATION TAGS ON EACH TREE, AND A MATCHING TAG FOR THE DONOR TO TAKE HOME. WE CAN ALSO PLANT FOR YOU & SEND A PHOTO. WE'LL HOST A PHOTO COLLECTION CAPTURING EACH PERSON PLANTING, & HONORING THE DONOR ON HILT'S WEBSITE.

'ILIAHI \$25K GIFTS: FIVE RARE 'ILIAHI ALO'E (COASTAL SANDALWOOD) TREES PLANTED IN YOUR HONOR.

WILIWILI \$15K GIFTS: A NATIVE ENDEMIC WILIWILI TREE PLANTED IN YOUR HONOR.

'OHAI \$10K GIFTS: ENDANGERED 'OHAI, KO'OLOA'ULA, 'IHI, 'AHINAHINA, OR 'ĀNUNU SHRUBS PLANTED IN YOUR HONOR.

HINAHINA \$5K GIFTS: ENDANGERED OR RARE NATIVE GROUNDCOVER SUCH AS HINAHINA, 'ĀWIKIWIKI, OR KOAI'A, PLANTED IN YOUR HONOR.



GIFTS OF \$10,000 AND UP:

IN ADDITION TO THE OPPORTUNITIES PROVIDED ON PREVIOUS PAGES, DONORS OF \$10,000 OR MORE WILL BE INVITED TO AN ANNUAL WINTER EXPERIENCE AT MAHUKONA TO PROVIDE AN IN-PERSON UPDATE ON PROGRESS, TOURS OF PROJECT AREAS, AND HANDS-TO-SOIL EXPERIENCES. PERSONAL EXPERIENCES CAN BE PROVIDED AT OTHER TIMES OF THE YEAR FOR THOSE UNABLE TO ATTEND IN THE WINTER.

ALL GIFTS OF \$500 AND UP:

WILL BE RECOGNIZED FOR THEIR GENEROSITY AND SUPPORT ON A CENTRAL PLAQUE TO BE LOCATED NEAR THE MAHUKONA HARBOR. THE CENTRAL PLAQUE & SURROUNDING AREA WILL BE OPEN TO THE PUBLIC AND RESTORED WITH NATIVE PLANTS.



ABOUT HAWAI‘I LAND TRUST

HAWAI‘I LAND TRUST (HILT) IS HAWAI‘I’S STATEWIDE LAND TRUST THAT IS BOTH A HAWAI‘I 501(C)3 NONPROFIT, AND A NATIONALLY ACCREDITED LAND TRUST. HILT PROTECTS AND STEWARDS THE LANDS THAT SUSTAIN HAWAI‘I AND TEACHES FUTURE GENERATIONS TO DO THE SAME. HILT HAS PROTECTED 21,903 ACRES THROUGHOUT HAWAI‘I, THROUGH 7 PRESERVES OWNED AND STEWARDED BY HILT, 50 CONSERVATION EASEMENTS HELD BY HILT THAT RESTRICT PRIVATELY-OWNED LAND, AND 5 FACILITATED PROJECTS.

HILT FORMED IN 2011 FROM A MERGER OF FOUR ISLAND LAND TRUSTS ON HAWAI‘I ISLAND, MAUI, O‘AHU, AND KAUA‘I. WE PROTECT LANDS THAT ARE INTEGRAL TO HAWAI‘I’S WELL-BEING AND CHARACTER, UPHOLDING OUR RESPONSIBILITY TO THESE LANDS AND THE COMMUNITIES THEY ARE IN THROUGH THOUGHTFUL STEWARDSHIP THAT DEEPENS COMMUNITY CONNECTION TO, AND BUILDS RECIPROCAL RELATIONSHIPS WITH LAND.

HILT WORKS ON COMMUNITY-DRIVEN LAND PROTECTION PROJECTS WHERE THE COMMUNITY ROOTED IN A PLACE ASKS FOR HILT’S HELP. HILT EMPOWERS NATIVE HAWAIIAN DESCENDANTS AND CULTURAL PRACTITIONERS TO LEAD, AND WELCOMES EVERYONE TO JOIN AND ENHANCE THE EFFORT. COMMUNITY-LED LAND PROTECTION EFFORTS RESULT IN GENERATIONALLY-COMMITTED COMMUNITY STEWARDSHIP OF THE LAND ONCE PROTECTED.

HAWAI'I LAND TRUST BOARD OF DIRECTORS:

LISA GROVE, CHAIR

JENNIFER LUCK, VICE-CHAIR

KEITH OGATA, TREASURER

U'ILANI TANIGAWA LUM, SECRETARY

ROB ALSTON

JOEY AQUINO

MATT BEALL

DAVID CARSWELL

MARY CHARLES

JOCELYN GARAVOY HERBERT

LEAHI HALL

NEIL HANNAHS

MARISSA HARMAN

RANDY VITOUSEK

TERESA YOUNG

MAX UNGER

HILT MAHUKONA CAMPAIGN COMMITTEE:

MARY CHARLES, CHAIR

PETER MERRIMAN, MEMBER

WILLIAM SWANK, MEMBER

THE TRANSACTION IS LED BY:

SHAE KAMAKA'ALA

HILT DIRECTOR OF 'ĀINA PROTECTION & GENERAL COUNSEL

IN PARTNERSHIP WITH

NĀ KĀLAI WA'A

KOHALA COMMUNITY

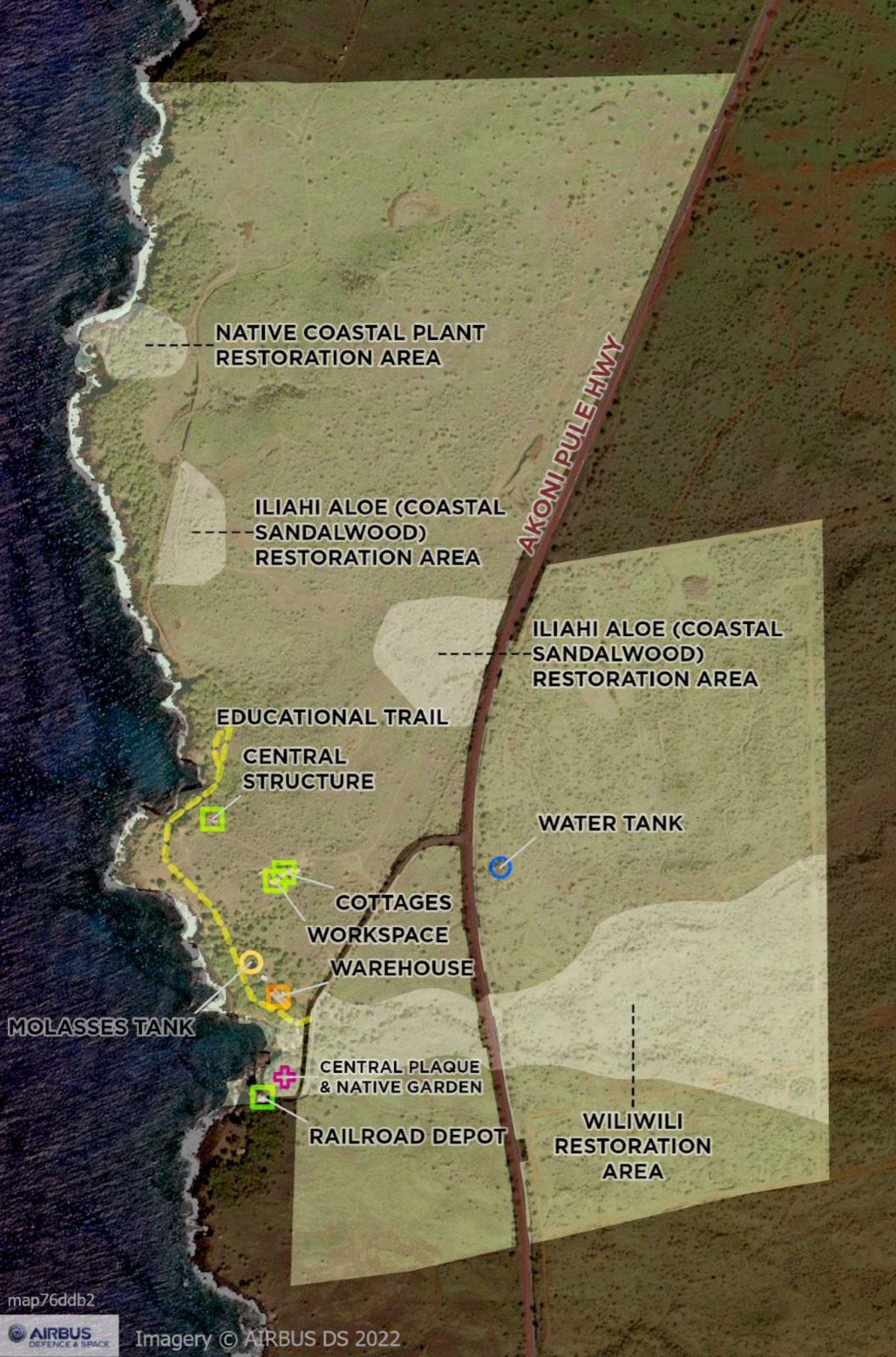
MAHUKONA

INITIAL STEWARDSHIP PRIORITIES

- RESTORE NATIVE HABITAT WITH A FOCUS ON CLIMATE RESILIENCY
- RENOVATE HISTORIC RAIL STATION FOR USE AS A CULTURAL EDUCATION CENTER
- REPAIR WATER TANK AND INFRASTRUCTURE
- DEVELOP EDUCATIONAL TRAIL AND SIGNAGE
- HOST VOLUNTEER WORK DAYS AND EDUCATIONAL HIKES
- PERPETUATE TRADITIONAL HAWAIIAN NAVIGATION PRACTICES
- HIRE TWO DEDICATED MAHUKONA STEWARDS AND EDUCATORS



HAWAI'I LAND TRUST



LONG-TERM STEWARDSHIP PRIORITIES

RESTORE NATIVE HABITAT

THE LONG-TERM VISION IS TO RESTORE A NATIVE ECOSYSTEM ON THE WHOLE PROPERTY. SHOWN ON THE MAP ARE NATIVE RESTORATION AREAS FOR THE FIRST 10 YEARS, POST-PROTECTION IN 2023. THE NATIVE PLANT COASTAL RESTORATION AREA HAS BEEN CARED FOR BY KOHALA FISHING FAMILIES FOR GENERATIONS. WE WILL REMOVE INVASIVE SPECIES THEREBY ENCOURAGING THE EXISTING NATIVE PLANTS TO EXPAND, PLANT NATIVE COASTAL PLANTS, AND POTENTIALLY REINTRODUCE OR IDEALLY NATURALLY RECRUIT THE ENDANGERED YELLOW-FACED BEE. THE 'ILIAHI AND WILIWILI RESTORATION AREAS WILL BE REPLANTED WITH DIVERSE COASTAL AND DRYLANDS NATIVE SPECIES, WITH EITHER 'ILIAHI OR WILIWILI AS A CORE SPECIES.

DEVELOP EDUCATIONAL TRAIL & SIGNAGE

THE PUBLIC ACCESS TRAIL WILL BE CURATED WITH INTERPRETATIVE SIGNAGE ACQUAINTING VISITORS TO PLACE WHILE TELLING THE STORY OF MAHUKONA AND THIS HISTORIC EFFORT. BENCHES WILL BE PLACED ALONG THE TRAIL TO ALLOW FOR REFLECTION AND ENJOYMENT.



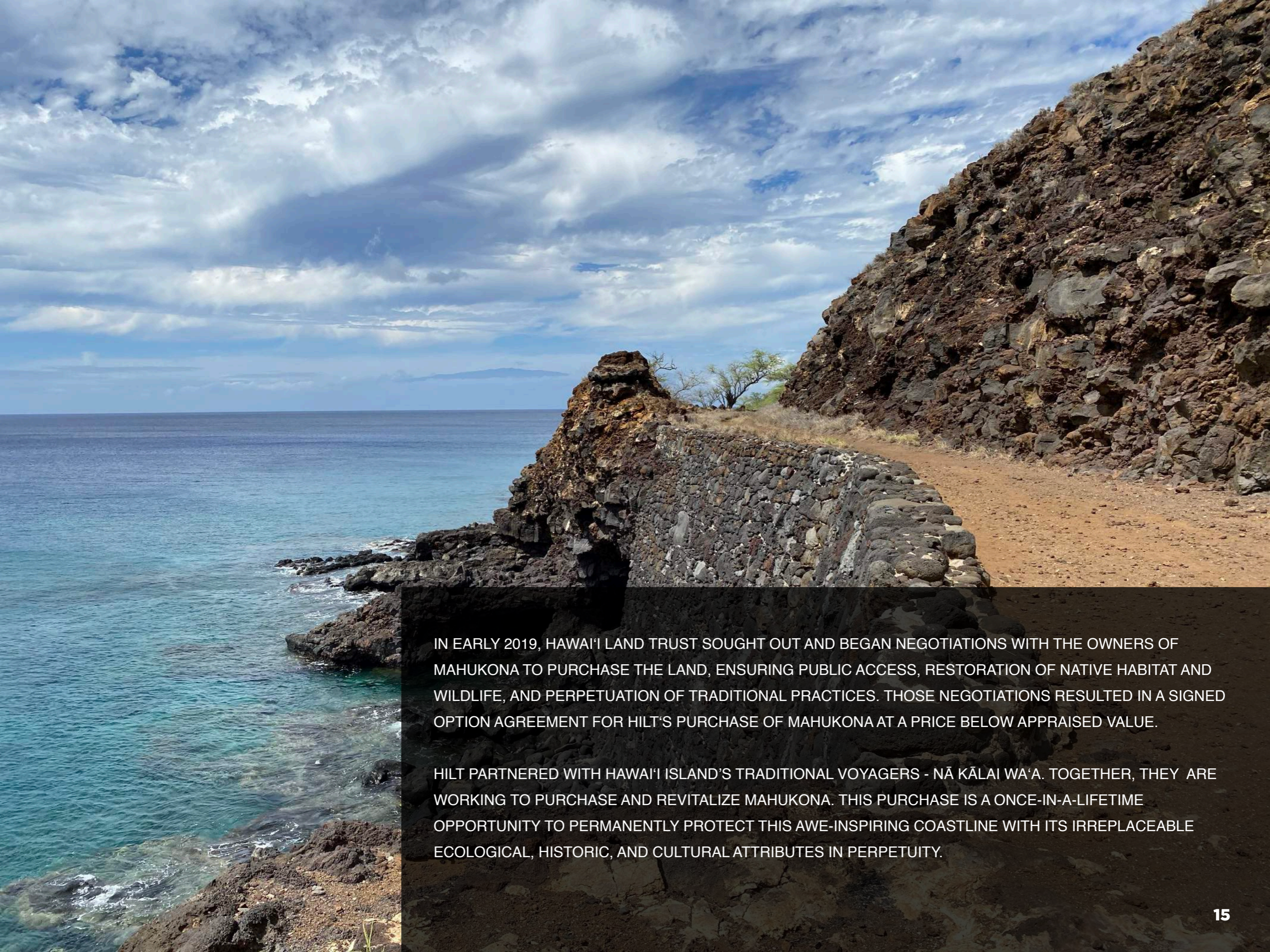


“KEEP THAT PLACE INTACT... IT IS A WAY OF LIFE.”

- PATTI ANN SOLOMON, MAHUKONA CARETAKER AND DESCENDANT

FOR DECADES, LARGE SCALE RESORT AND RESIDENTIAL DEVELOPMENT WAS THE PLANNED FUTURE OF MAHUKONA. THOSE PLANS WOULD HAVE RESTRICTED PUBLIC ACCESS AND TRADITIONAL PRACTICES. DEVELOPMENT WOULD HAVE DRAMATICALLY ALTERED THE VIEWS FROM *KO'A HEIAU HOLOMOANA* (A NAVIGATION SITE OF WORLD IMPORTANCE) BY ADDING LIGHT POLLUTION AND INTERRUPTING THE 360 DEGREE COASTLINE, MOUNTAIN VIEWS, AND THE RISING AND SETTING CONSTELLATIONS, SUN, AND MOON— ALL INTEGRAL PARTS OF ITS NAVIGATIONAL TRADITION.

KOHALA COMMUNITY MEMBERS OPPOSED DEVELOPMENT AND ASKED HAWAI'I LAND TRUST TO FIND A CONSERVATION ALTERNATIVE.



IN EARLY 2019, HAWAI'I LAND TRUST SOUGHT OUT AND BEGAN NEGOTIATIONS WITH THE OWNERS OF MAHUKONA TO PURCHASE THE LAND, ENSURING PUBLIC ACCESS, RESTORATION OF NATIVE HABITAT AND WILDLIFE, AND PERPETUATION OF TRADITIONAL PRACTICES. THOSE NEGOTIATIONS RESULTED IN A SIGNED OPTION AGREEMENT FOR HILT'S PURCHASE OF MAHUKONA AT A PRICE BELOW APPRAISED VALUE.

HILT PARTNERED WITH HAWAI'I ISLAND'S TRADITIONAL VOYAGERS - NĀ KĀLAI WA'A. TOGETHER, THEY ARE WORKING TO PURCHASE AND REVITALIZE MAHUKONA. THIS PURCHASE IS A ONCE-IN-A-LIFETIME OPPORTUNITY TO PERMANENTLY PROTECT THIS AWE-INSPIRING COASTLINE WITH ITS IRREPLACEABLE ECOLOGICAL, HISTORIC, AND CULTURAL ATTRIBUTES IN PERPETUITY.



MAHUKONA HAS BEEN USED IN MANY WAYS OVER ITS LONG HISTORY, BEGINNING AS A CENTER OF TRADITIONAL NAVIGATION APPROXIMATELY 1,500 YEARS AGO, BECOMING A THRIVING PORT IN THE 19TH AND EARLY 20TH CENTURY, AND RECENTLY, A TARGET FOR LUXURY DEVELOPMENT. THROUGHOUT THIS ENTIRE TIME, MAHUKONA CONTINUED TO BE A UNIQUE CULTURAL AND SPIRITUAL PIKO (CENTER) SUPPORTED BY THE KOHALA COMMUNITY. THROUGH THIS PURCHASE, HILT AND NĀ KĀLAI WA'A WILL SECURE AND HONOR MAHUKONA'S HISTORY, SUPPORT ITS CONTINUED USE AS A NAVIGATIONAL & CULTURAL CENTER, AND ENHANCE ITS NATIVE ECOSYSTEMS, PUBLIC ACCESS, AND EDUCATIONAL USE.



**HE WA‘A HE MOKU,
HE MOKU HE WA‘A**

**THE CANOE IS OUR ISLAND,
THE ISLAND IS OUR CANOE**

FIGURATIVELY:
TO LIVE IN RECIPROCITY
WITH OUR FINITE RESOURCES



KO‘A HEIAU HOLOMOANA

A SPIRITUAL GATHERING PLACE FOR THOSE WHO TRAVEL ON THE OCEAN

KO‘A


1. NVS. CORAL, CORAL HEAD. ALSO ‘ĀKO‘AKO‘A. KE KO‘A MOKUMOKU O HE‘EIA, THE BROKEN CORAL BEDS OF HE‘EIA [AN EXPRESSION USED IN SONGS AND CHANTS REFERRING TO HE‘EIA, O‘AHU].
2. N. FISHING GROUNDS, USUALLY IDENTIFIED BY LINING UP WITH MARKS ON SHORE.
3. N. SHRINE, OFTEN CONSISTING OF CIRCULAR PILES OF CORAL OR STONE, BUILT ALONG THE SHORE OR BY PONDS OR STREAMS, USED IN CEREMONIES AS TO MAKE FISH MULTIPLY; ALSO BUILT ON BIRD ISLANDS, AND USED IN CEREMONIES TO MAKE BIRDS MULTIPLY.

HEIAU

N. PRE-CHRISTIAN PLACE OF WORSHIP, SHRINE; SOME HEIAU WERE ELABORATELY CONSTRUCTED STONE PLATFORMS, OTHERS SIMPLE EARTH TERRACES.

HOLOMOANA

NVT. SEAMAN, SEAFARER; TO SAIL ON THE SEA; SEA VOYAGE OR CRUISE.



ONE OF HUNDREDS OF CULTURAL SITES ON THE MAHUKONA PROPERTY, *KO'A HEIAU HOLOMONA* IS A NAVIGATIONAL HEIAU (ANCIENT PLACE OF WORSHIP) LOCATED ON THE BLUFFS OF KAMANŌ BAY THAT REMAINS IN USE AS A NAVIGATIONAL AND SPIRITUAL CENTER FOR THOSE LEARNING TRADITIONAL HAWAIIAN VOYAGING METHODS. ORAL TRADITION TEACHES THAT NAVIGATORS FROM ACROSS THE PACIFIC BUILT *KO'A HEIAU HOLOMONA* HUNDREDS OF YEARS BEFORE THE KOHALA-KONA COAST WAS FIRST SETTLED.

FOR CENTURIES, MASTER NAVIGATORS USED *KO'A HEIAU HOLOMONA* TO TEACH WAYFINDING AND TO CONNECT WITH THE NATURAL WORLD. THE CLEAR SKIES AND OPEN VANTAGE POINT ALLOWED MASTER NAVIGATORS TO TEACH STUDENTS ABOUT CONSTELLATIONS AND THE ELEMENTS. MORE RECENTLY, MAU PAILUG, THE MASTER NAVIGATOR FROM MICRONESIA WHO WAS ESSENTIAL TO THE REVITALIZATION OF TRADITIONAL NAVIGATION IN HAWAII, AND HAWAIIAN NAVIGATORS SUCH AS CLAY BERTELMANN, HAVE USED *KO'A HEIAU HOLOMONA* TO PREPARE FOR THEIR JOURNEYS. STUDENTS CONTINUE TO LEARN ANCIENT WAYFINDING TECHNIQUES, AND RESPONSIBILITY TOWARD THE ISLANDS AND ONE ANOTHER. *KO'A HEIAU HOLOMONA* IS CENTRAL TO HAWAII AND THE WORLD'S NAVIGATIONAL HERITAGE.

MAHUKONA IS RESPECTED, ACCESSIBLE, AND THRIVING.

MA WAHO AU A'O MAHUKONA

"I'VE ARRIVED OUTSIDE OF MAHUKONA..."

FROM A SONG WRITTEN IN THE TIME OF KAMEHAMEHA THE 5TH



IN THE 1880'S, MAHUKONA BECAME THE MAIN HARBOR FOR SUGAR EXPORTS AND AN INDUSTRIAL PLANTATION TOWN. MAHUKONA WAS ONE OF HAWAII'S FIRST PORTS OF CALL AND SERVED AS ONE FOR OVER A CENTURY. ALL CARGO, PASSENGERS, MAIL AND NEWS PASSED THROUGH MAHUKONA. ANCIENT TRAILS, FOLLOWED BY CART PATHS, FOLLOWED BY ONE OF HAWAII'S FIRST RAILROADS, CARRIED EVERYTHING FROM THE OUTSIDE WORLD TO AND FROM KOHALA. IT WAS THE TERMINUS AND STATION FOR THE MAHUKONA TO NIULI'I RAILROAD. REMAINS OF THE HARBOR ACTIVITY, THE RAILROAD AND RAILROAD DEPOT, THE WAREHOUSE, THE VILLAGE, THE FUEL DEPOT AND THE SUGAR AND CATTLE LOADING OPERATIONS ARE STILL SCATTERED AMONG THE HUNDREDS OF ARCHAEOLOGICAL SITES.



Hawaii Railway
#2569

Mahukona Landing. (2)
#HC 31,086

Monsieur Coll.



**ENDANGERED, THREATENED &
NATIVE SPECIES OF MAHUKONA**

HINAHINA KŪ KAHAKAI (HELIOTROPIUM ANOMALUM)

PHOTO: HILT

MAHUKONA IS A PLACE OF ECOLOGICAL SIGNIFICANCE AT IMMINENT RISK. MAHUKONA IS WELL KNOWN FOR ITS SIGHTINGS OF THE ENDANGERED HAWAIIAN HOARY BAT ('OPE'APE'A), ONE OF ONLY TWO MAMMALS NATIVE TO HAWAII. AT LEAST FOUR ENDANGERED SHRUBS HAVE A KNOWN PRESENCE OR CAN BE PROVIDED IDEAL ECOSYSTEMS TO THRIVE INCLUDING THE KO'OLOA'ULA, 'ŌHAI, 'IHI AND 'AHINAHINA. ECOLOGISTS HAVE IDENTIFIED MAHUKONA AS A TARGET SITE TO REINTRODUCE HAWAII'S NATIVE ENDANGERED HAWAIIAN YELLOW-FACED BEES, IF THE LAND CAN BE PROTECTED TO PROVIDE THEM REFUGE.

SPECIES INCLUDE:

'OPE'APE'A (HAWAIIAN HOARY BAT, *LASIURUS CINERUS SEMOTUS*)

KO'OLOA'ULA (*ABUTILON MENZIESII*)

'ŌHAI (*SESBANIA TOMENTOSA*)

'IHI (*PORTULACA VILLOSA*)

'AHINAHINA (BLUNT CHAFF FLOWER, *ACHYRANTHES MUTICA*)

HINAHINA KŪ KAHAKAI (*HELIOTROPIUM ANOMALUM*)

'ILIAHI ALO'E (COASTAL SANDALWOOD, *SANTALUM ELLIPTICUM*)

NALO MELI MAOLI (HAWAIIAN YELLOW-FACED BEE)

THE WATERS OFF MAHUKONA PROVIDE A SAFE HAVEN FOR BIRTHING HUMPBACK WHALES, FERTILE FEEDING GROUNDS FOR GIANT MANTA RAYS AND SPINNER DOLPHINS, AND RESTING GROUNDS FOR THE HAWAIIAN MONK SEAL. A VARIETY OF THREATENED AND ENDANGERED NATIVE SEABIRDS INCLUDING THE 'UA'U, 'AKĒ'AKĒ, AND THE 'A'O NEST IN THE KOHALA MOUNTAINS AND FEED OFF THE SHORELINE.



MARINE SPECIES INCLUDE:

KOHOLĀ (HUMPBACK WHALE, *MEGAPTERA NOVAEANGILAE*)

HĀHĀLUA (GIANT MANTA RAY, *MOBULA BIROSTRIS*)

'ĪLIOHOLOIKAUUA (HAWAIIAN MONK SEAL, *NEOMONACHUS SCHAUISLANDI*)

NAI'A (SPINNER DOLPHIN, *STENELLA LONGIROSTRIS*)

'UA'U (HAWAIIAN DARK-RUMPED PETREL, *PTERODROMA PHAEOPYGIA SANDWICHENSIS*)

'AKĒ'AKĒ (BAND-RUMPED STORM-PETREL, *OCEANODROMA CASTRO*)

'A'O (NEWELL'S SHEARWATERS, *PUFFINUS NEWELLI*)

NATIVE HABITAT RESTORATION

HAWAI'I LAND TRUST AND THE COMMUNITY WILL RESTORE NATIVE HABITAT FOR HAWAI'I'S ENDANGERED COASTAL SPECIES SUCH AS THE ENDEMIC HAWAIIAN YELLOW-FACED BEE (*HYLAEUS ANTHRACINUS*), PICTURED HERE.

NINETEEN ENDEMIC SPECIES OF HAWAIIAN YELLOW-FACED BEES HAVE BEEN IDENTIFIED, WITH SEVEN OF THOSE SPECIES ON THE ENDANGERED SPECIES LIST. THESE SEVEN HAWAIIAN BEE SPECIES ARE THE FIRST BEES TO BE PROTECTED UNDER THE ENDANGERED SPECIES ACT. ONE OF THOSE SPECIES THAT IS ONLY FOUND ON HAWAI'I ISLAND, IS LISTED AS CRITICALLY IMPERILED ON THE XERCES SOCIETY RED LIST BECAUSE OF ITS EXTREMELY NARROW RANGE AND SPARSE NUMBERS. YELLOW-FACED BEES ARE MOST PROMINENT IN EARLY SPRING AND LATE SUMMER. THEY ARE FREQUENTLY FOUND FORAGING ON 'ILIMA FLOWERS, NAUPAKA, AND THE BEACH HELIOTROPE. HAWAIIAN YELLOW-FACED BEES BURROW AND NEST IN CORAL RUBBLE AND HOLES IN DRIFTWOOD, WHICH ARE FOUND ALONG MAHUKONA'S COASTAL STRAND.



OUR PARTNERS

WIDESPREAD SUPPORT FOR AN INDIGENOUS-LED
PRIVATE-PUBLIC PARTNERSHIP





“MY ANCESTOR WAS BROUGHT HERE TO BE A NAVIGATOR—THEY TAUGHT THE ART OF NAVIGATION AND THAT IS MY CONNECTION THERE. TO KEEP THAT PLACE INTACT—IT IS A WAY OF LIFE.”

-PATTI ANN SOLOMON, MAHUKONA CARETAKER & VOYAGER,
NĀ KALAI WA‘A AND HAWAI‘I LAND TRUST



“I FEEL THE SPIRIT OF MAHUKONA IS SO VERY HAPPY RIGHT NOW ESPECIALLY FOR THE RECOVERY OF THE RECOGNITION AND ACKNOWLEDGMENT OF ITS SPECIAL PLACE IN HISTORY WHERE NOW IT CAN BE RIGHTFULLY HONORED AS IT HAS BEEN THROUGHOUT TIME.”

-MILTON “SHORTY” BERTELMANN, PWO MASTER NAVIGATOR, NĀ KĀLAI WA‘A



“THERE IS A REALLY IMPORTANT, UNSPOKEN CODE OF CONDUCT IN HOW YOU ENGAGE WITH A PLACE. IT IS AN HONOR TO BE GREETED BY THE ʻANO (SPIRIT) OF KOHALA AND ITS GENERATIONAL FAMILIES TO DO WHAT MAHUKONA HAS BEEN WAITING FOR.”

-SHAE KAMAKAALA, HAWAI‘I LAND TRUST DIRECTOR OF ʻĀINA PROTECTION & GENERAL COUNSEL



“WHEN THE KŪPUNA THAT ARE FROM HERE INTRODUCED US TO THE NAVIGATIONAL HEIAU, THEY ASKED US TO UTILIZE THIS PLACE AS IT WAS IN THE PAST AND CONTINUE TO USE IT SO OTHERS WOULD KNOW THAT IT'S HERE AND THEY ARE NOT JUST THINGS OF THE PAST THAT ARE LEFT IN STORIES. MAHUKONA IS STILL RELEVANT TO US IN THIS MODERN DAY AND TIME. WE ARE CONTINUING TO WRITE THE STORY TODAY, THAT WILL CONTINUE FOR THE GENERATIONS THAT COME AFTER US.”

- CHADD KA'ONOHI PAISHON, SENIOR CAPTAIN & PWO NAVIGATOR, NĀ KALAI WA'A



“HILT'S MAHUKONA NOMINATION FOR COUNTY PUBLIC ACCESS, OPEN SPACE, AND NATURAL RESOURCES COMMISSION (PONC) FUNDS RECEIVED THE #1 RANKING IN 2020. WE ARE HONORED TO BE AFFORDED THE PRIVILEGE OF FORMING A PRIVATE-PUBLIC PARTNERSHIP TO ENSURE THE CONTINUED STEWARDSHIP, CONSERVATION, CULTURAL PRESERVATION, AND COMMUNITY ACCESS OF MAHUKONA FOR GENERATIONS TO COME.”

- MAYOR MITCH ROTH, COUNTY OF HAWAI'I



“I HAVE WORKED ON UNDERSTANDING AND RESTORING THE LEEWARD KOHALA FIELD SYSTEM OF AGRICULTURE IN THE REGION, AND REGARD THAT AGRICULTURAL SYSTEM AS ONE OF THE MOST BEAUTIFUL EXAMPLES OF THE INNOVATIVE NATURE OF PRE-CONTACT HAWAIIAN SOCIETY.”

- PETER VITOUSEK, PROFESSOR OF BIOLOGY, STANFORD UNIVERSITY



“IN 2019 WE BEGAN THE JOURNEY TO SAVE THIS INCREDIBLE PLACE OF HISTORY AND ENVIRONMENTAL IMPORTANCE. PLEASE JOIN MY WIFE, LYNN, AND ME, YOUR FRIENDS AND NEIGHBORS, KAMA‘ĀINA AND VISITORS, TO SUPPORT AND REALIZE THIS GENERATIONAL OPPORTUNITY TO PRESERVE, RESTORE, AND ENHANCE MAHUKONA.”

-BILL SWANK, ATTORNEY & HAWAI‘I LAND TRUST MAHUKONA CAMPAIGN COMMITTEE MEMBER



“MAHUKONA IS THE EMBODIMENT OF EVERYTHING WE WORK TO SUPPORT AT HAWAI‘I LAND TRUST. BY ACQUIRING THIS SITE AND STEWARDING ITS RESOURCES IN COLLABORATION WITH COMMUNITY, WE HELP ENSURE THE ECOLOGICAL AND SOCIAL BENEFITS ROOTED IN THE RECIPROCAL RELATIONSHIP BETWEEN OUR PEOPLE AND THIS PLACE WILL CONTINUE FOR GENERATIONS TO COME.”

-‘OLU CAMPBELL, HAWAI‘I LAND TRUST PRESIDENT & CEO



“DONATING TO PROTECT MAHUKONA IS THE CHANCE FOR VICKI AND I TO BE A PART OF A 1,000+ YEAR CONTINUUM OF PEOPLE BENEFITING FROM MAHUKONA. I AM HUMBLD TO PARTICIPATE AND HELP SUSTAIN POLYNESIAN NAVIGATION WHILE RESTORING NATIVE HABITAT, IN A PLACE THAT CAN BE ENJOYED BY ALL FOR ANOTHER 1,000 YEARS . . .”

-PETER MERRIMAN, RESTAURATEUR & HAWAI‘I LAND TRUST MAHUKONA CAMPAIGN COMMITTEE MEMBER

PHOTO: CHARLA PHOTOGRAPHY

FROM PROTECTION TO CONNECTION

HAWAI'I LAND TRUST'S PUBLIC BENEFIT COMMITMENTS

FOLLOWING THE CONSERVATION PURCHASE



PUBLIC ACCESS: PUBLIC ACCESS WILL BE PROVIDED ALONG THE COASTAL TRAIL. HILT WILL INSTALL INTERPRETIVE SIGNAGE PROVIDING HISTORY, INFORMATION, AND COMMEMORATIVE DISPLAYS OF DONORS' CONTRIBUTIONS OVER \$500.

TALK STORY ON THE LAND: HILT WILL OFFER REGULAR GUIDED HIKES, KNOWN AS OUR TALK STORY ON THE LAND EVENTS, FREE AND OPEN TO THE PUBLIC.

CULTURAL ACCESS: ACCESS AND SPACE IN SUPPORT OF CONSTITUTIONALLY PROTECTED SUBSISTENCE, RELIGIOUS, AND CULTURAL PRACTICE, INCLUDING THE RIGHT AND KULEANA (RESPONSIBILITY) TO MĀLAMA 'ĀINA (CARING FOR THE LAND THAT SUSTAINS US).

EDUCATIONAL PROGRAMS: FIELD TRIPS AND EDUCATIONAL PROGRAMS FOR SCHOOL CHILDREN AND COMMUNITY GROUPS WILL CONTINUE TO BE OFFERED WITH OUR PROJECT PARTNERS, NĀ KĀLAI WA'A AND EXPANDED WITH VALUES-ALIGNED PUBLIC-PRIVATE PARTNERSHIPS.

MONTHLY COMMUNITY VOLUNTEER DAYS: PUBLIC VOLUNTEER WORK DAYS HAVE BEEN INTEGRAL TO THE RESTORATION OF HILT'S PRESERVES STATEWIDE AND WILL BE AN KEY PART OF THE RESTORATION AND ABUNDANCE AT MAHUKONA.



PLEASE JOIN US IN SAVING MAHUKONA
WE WELCOME CONVERSATIONS, PLEASE CONTACT US

ANGELA BRITTEN

CHIEF OPERATIONS & PHILANTHROPY OFFICER

ANGELA.BRITTEN@HILT.ORG

808-791-0731

SHAE KAMAKA'ALA

DIRECTOR OF 'ĀINA PROTECTION & GENERAL COUNSEL

SHAE.KAMAKAALA@HILT.ORG

808-940-0639

126 QUEEN STREET, SUITE 306 | HONOLULU, HI 96813 | HILT.ORG

MAHUKONA WEBSITE: MAHUKONA.ORG

OLA MAHUKONA