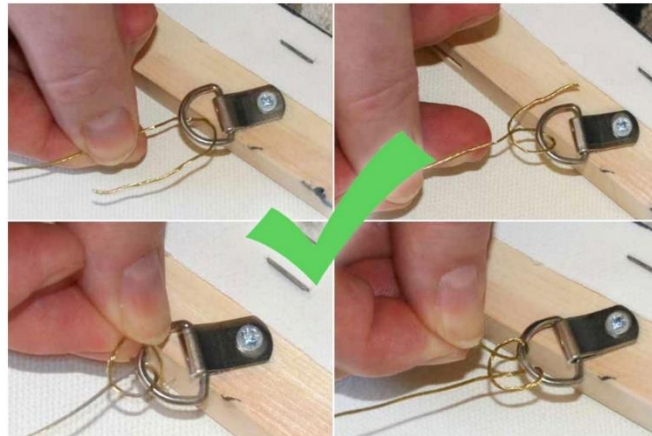
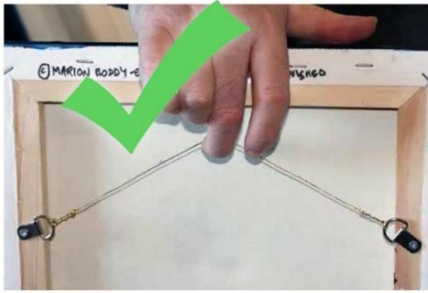


## Artwork Hanging/Presentation Requirements

Art must have suitable hardware and be ready to hang with maximum outside dimensions not to exceed 12x12.

### Hanging Artwork

All wall art must arrive ready to hang. Recommended hanging hardware is angled D-rings with a wire or straight D-rings with no wire. Sawtooth hangers are not recommended but will be accepted for this show. Not acceptable: eye hooks, non-wire material for the wire, missing or loose hanging materials. Picture wire should never be pulled tight straight across; always leave a suspension arc on wire and knot ends. Nails & hooks do not need to be provided.



### Art Tags

Label all exhibit submissions with complete identification labels. Art lacking, incomplete, or unattached labels will be rejected. Ensure legible labels securely affixed to the artwork's back.

Complete the artwork identification label and make a copy. Submit one copy with your artwork to the gallery. Separate the second copy into individual tags, attaching each to the back of the corresponding artwork.

### Transport Packaging

Transport materials must be taken with you during drop-off and brought back at pick-up. A Framer's Touch is not liable for artwork loss or damage; artists are advised to insure their pieces.

Drop off art between March 16th-30th during business hours; late arrivals won't be included. Pick up unsold artwork between May 1st-11th during business hours. **Unretrieved art by May 11 becomes A Framer's Touch property.**