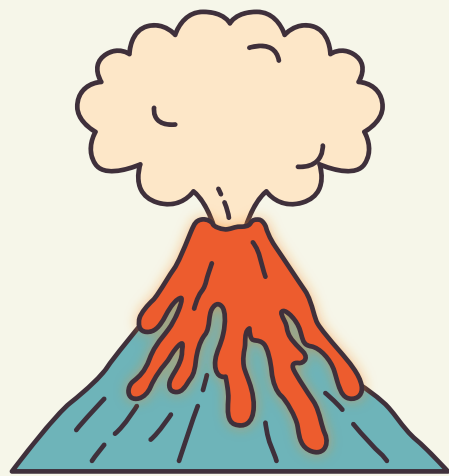
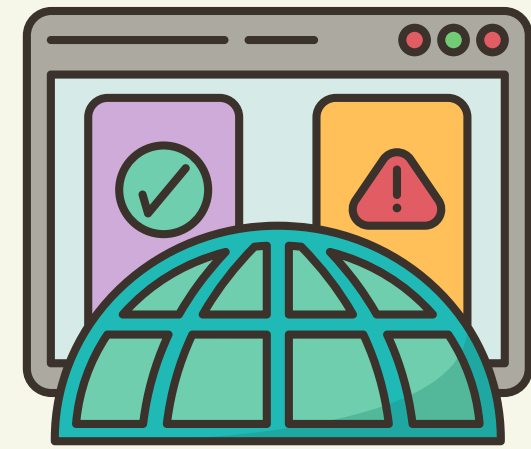


# LATIN AMERICA AND THE MANAGEMENT OF GLOBAL CATASTROPHIC RISKS

By: Observatorio de Riesgos Catastróficos Globales (ORCG)

**Global catastrophic risks (GCR)** are defined as those with the potential to inflict serious harm on human well-being on a worldwide scale.



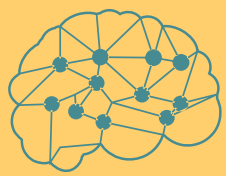
A major volcanic eruption, a pandemic, or a nuclear war are considered GCR.

These risks represent a global challenge that requires international cooperation and proper management.



Some countries in Latin America have implemented strategies to manage GCR directly or indirectly, but these efforts are still limited.

To contribute to the improvement of the management of global catastrophic risks in Latin America, **ORCG** has prepared a report with recommendations focused on three specific risks:



Risks of AI



Biological risks



Abrupt Sunlight Reduction  
Scenarios (ASRS)

The report outlines the proposals below:

# GENERAL PROPOSALS

Integrate GCR into national risk assessments.



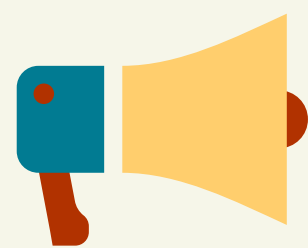
Reconsider risk prioritization within national risk registries.

Develop institutional mechanisms to enhance comprehensive risk management.



Create financial mechanisms to incentivize GCR management.

Strengthen regional and international cooperation for GCR reduction.



Promote accessible and clear communication about GCR.

Monitor the adoption  
of AI to detect risks.



# ARTIFICIAL INTELLIGENCE

Develop national  
plans and regulations  
for AI.



Participate in multilateral  
initiatives for global  
governance.



# BIOLOGICAL RISKS



Promote transparency in epidemiological surveillance systems.



Strengthen regulation for high-containment laboratories.



Conduct preparedness exercises for anthropogenic biological events.



Monitor antimicrobial resistance.



Safeguard ecosystems.





# ASRS

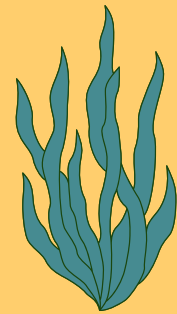
Abrupt Sunlight  
Reduction Scenarios



Include preparedness and response measures for ASRS in national management plans.



Promote regional cooperation in managing ASRS.



Strengthen resilient food-producing industries.



Implement information and training strategies about ASRS.



Ensure food equity in crisis scenarios.

TAKE A LOOK AT OUR REPORT  
HERE:



FOLLOW US ON SOCIAL MEDIA



<https://riesgoscatastrofosglobales.com>



[info@riesgoscatastrofosglobales.com](mailto:info@riesgoscatastrofosglobales.com)



[@RiesgosCatastrofosGlobales](#)



[Riesgos Catastróficos Globales](#)



[@RiesgosGlobales](#)