

UNDERACHIEVERS

A TALE OF TWO PERFECTIONISTS



A single-camera sitcom pilot

Written by

VICTORIA GORDON

www.thevictoriagordon.com

bluegarnetmedia@gmail.com

Underachievers

JUST WHEN IT WAS ALL GOING ACCORDING TO PLAN...



THE PLAN:

Ava and Maddie are lifelong superstars. Academic awards? They've got them. Perfect GPAs? Not even a question. Solid SAT scores and Harvard acceptance letters? Sitting in perfectly organized file folders in the girls' bedrooms. Ava is a student council member and valedictorian, while Maddie is student body president and salutatorian. They have bright futures and big dreams ahead of them.

THE PROBLEM:

In preparation for a student council retreat, the naive Ava and Maddie attempt to buy snacks for the road. On the advice of a jealous fellow overachiever, the girls go to a trendy new bakery... that turns out to be a dispensary. Once they're caught, the school district suspends them for a minimum of 90 days—just enough time to miss graduation and the start of their first year at Harvard.

THE BACKUP PLAN:

Ava and Maddie can't just wait. Maddie wants a break from the grind, while Ava wants to be the best at something—anything. After a chance encounter with some free-spirited gals in a cafe, Ava decides that the solution to their problems is to become the best at being the worst: the ultimate underachievers. Now, with new (if slightly weird) roommates and a fresh outlook, Ava and Maddie are ready to take on the world...or, at the very least, watch other people do it.

The high schoolers

AVA

The Ringleader

18, Female

Ava is a lifelong overachiever who takes it to the extreme. She's unusually determined for her age, hard-working, and driven to be the best at what she does, no matter what.



MADDIE

The Sidekick

18, Female

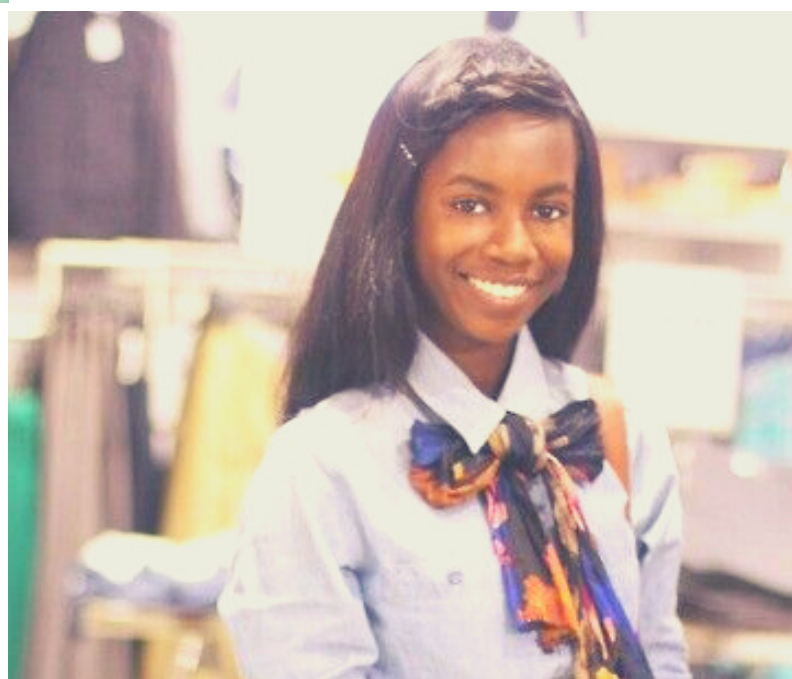
Maddie, on the other hand, is a worrier. She's lovably neurotic but wants to break free from her calendar-obsessed, high-achieving lifestyle.

CLEO

The Wannabe

15, Female

A freshman who idolizes Ava and Maddie. Cleo has a strong sense of right and wrong and a desire to be one of the "cool girls" (which, in her mind, means the smartest girls).



New Faces

STEFF AND HANNAH

The Rebels

20s, Female

The extremely basic, seemingly bizarre pair who rent their spare bedroom to Ava and Maddie. Steff and Hannah are the epitome of upper-middle-class, urban twentysomething culture, with their succulents, millennial pink accessories, and desperate need for avocado toast.



SEBASTIAN

The Burnout

20s, Female

A A pleasant but obnoxious guy who crashes on the girls' sofa. He's a bit of a boor and more than a little lazy, but a nice guy.



Next Steps

WHERE ARE WE GOING?



Ava and Maddie juggle their natural overachieving habits with their desire to not reach for the stars for a change. Fail at a community college course? They can try, but it just might not be possible. Let their roommates struggle with the IRS? Sure, they can watch, but how long before they can meddle? The overachiever/underachiever struggle fuels Ava and Maddie's behavior and allows the show to remain minimally serialized.

At the same time, throughout the first season, the girls aim to get their suspension overturned. When it finally does get repealed at the end of the first season, the girls decide to try something totally different and, rather than attempt to attend college, take some time to explore their interest while working minimum-wage jobs.

Their roommates, meanwhile, are a constant source of entertainment and, at times, frustration. Sebastian, who is later revealed to be Hannah's brother, eventually joins the group full-time and becomes an occasional romantic interest for both Steff and Maddie. Cleo, still in high school, continues to excel, but uses the girls' story as a reminder that it's okay to let go of the reins sometimes.

