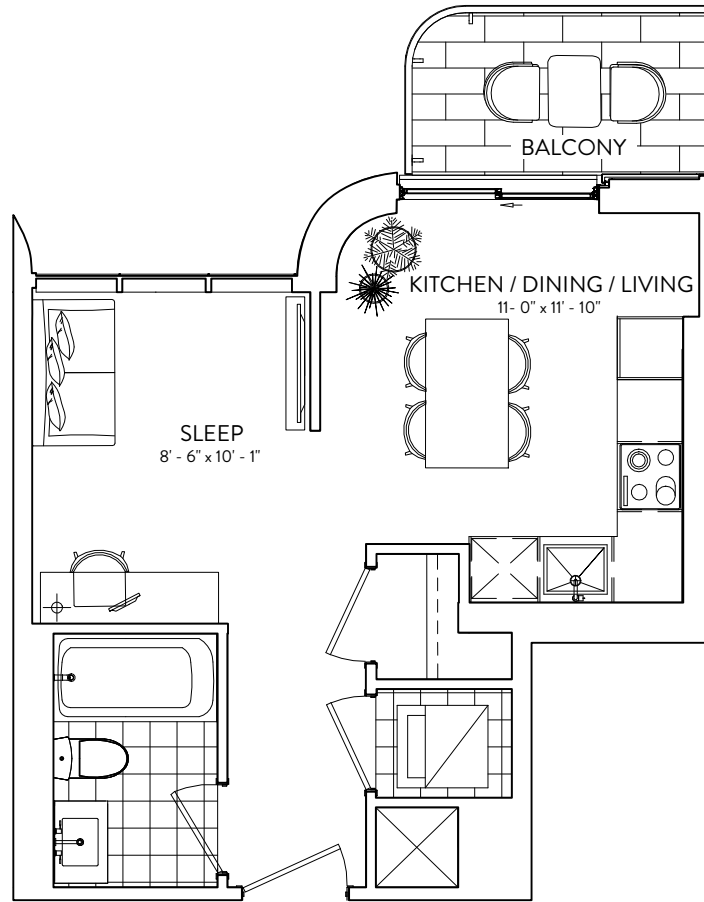



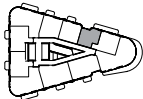
# S 395

STUDIO | 1 BATHROOM

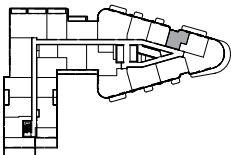
INTERIOR: 395 SF | EXTERIOR: 43 SF



FLOORS 12-14, 16-19, 21-27 



FLOORS 9-11




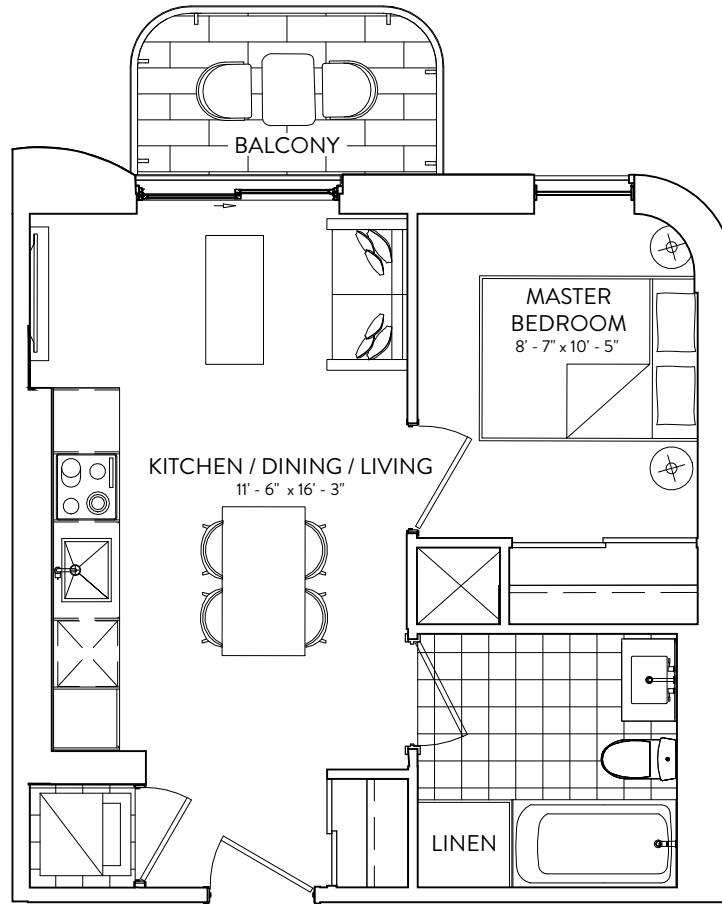
This plan is not to scale and is subject to architectural review and revision. The number of units per Floor and the number of floors may be reduced or increased at the vendor's sole discretion without notice. The purchaser acknowledges that the actual unit purchased may be a reverse layout to the plan shown. All materials, specifications, details and dimensions, if any, are approximate and subject to change without notice in order to comply with building site conditions and municipal, structural, vendor and/or architectural requirements. Actual living areas may vary from floor area stated. Floor areas have been measured and may vary in accordance with Bulletin #22 published by the Tarion Warranty Corporation. Bulkheads are not shown on this plan and may be located in areas of the Unit as required to provide venting and mechanical systems. Balconies, Terraces and Patios, if any, are exclusive use common elements shown for display purposes only and location and size are subject to change without notice. Window location, size and type may vary without notice. The length, width and directional position of the flooring are for illustration purposes only and may vary without notice. E.&O.E.

# 1B 472

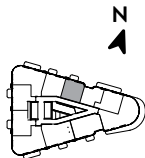
1 BEDROOM | 1 BATHROOM

INTERIOR: 472 SF | EXTERIOR: 43 SF

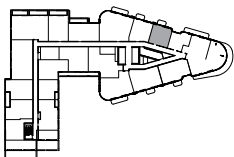
GALLERIA 



FLOORS 11-31



FLOORS 9-10



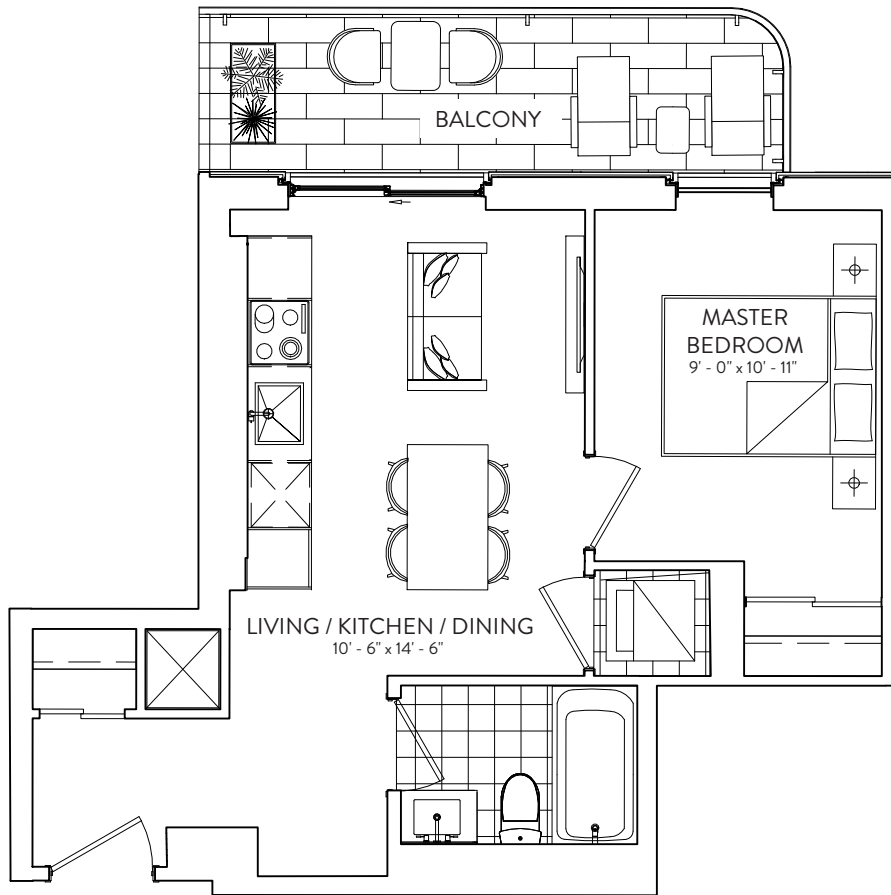
This plan is not to scale and is subject to architectural review and revision. The number of units per Floor and the number of floors may be reduced or increased at the vendor's sole discretion without notice. The purchaser acknowledges that the actual unit purchased may be a reverse layout to the plan shown. All materials, specifications, details and dimensions, if any, are approximate and subject to change without notice in order to comply with building site conditions and municipal, structural, vendor and/or architectural requirements. Actual living areas may vary from floor area stated. Floor areas have been measured and may vary in accordance with Bulletin #22 published by the Tarion Warranty Corporation. Bulkheads are not shown on this plan and may be located in areas of the Unit as required to provide venting and mechanical systems. Balconies, Terraces and Patios, if any, are exclusive use common elements shown for display purposes only and location and size are subject to change without notice. Window location, size and type may vary without notice. The length, width and directional position of the flooring are for illustration purposes only and may vary without notice. E.&O.E.

ELADCANADA

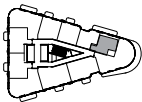
# 1B 473

1 BEDROOM | 1 BATHROOM

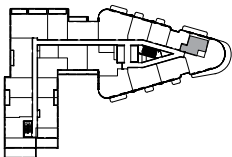
INTERIOR: 473 SF | EXTERIOR: 86 SF



FLOORS 11-27



FLOORS 9-10



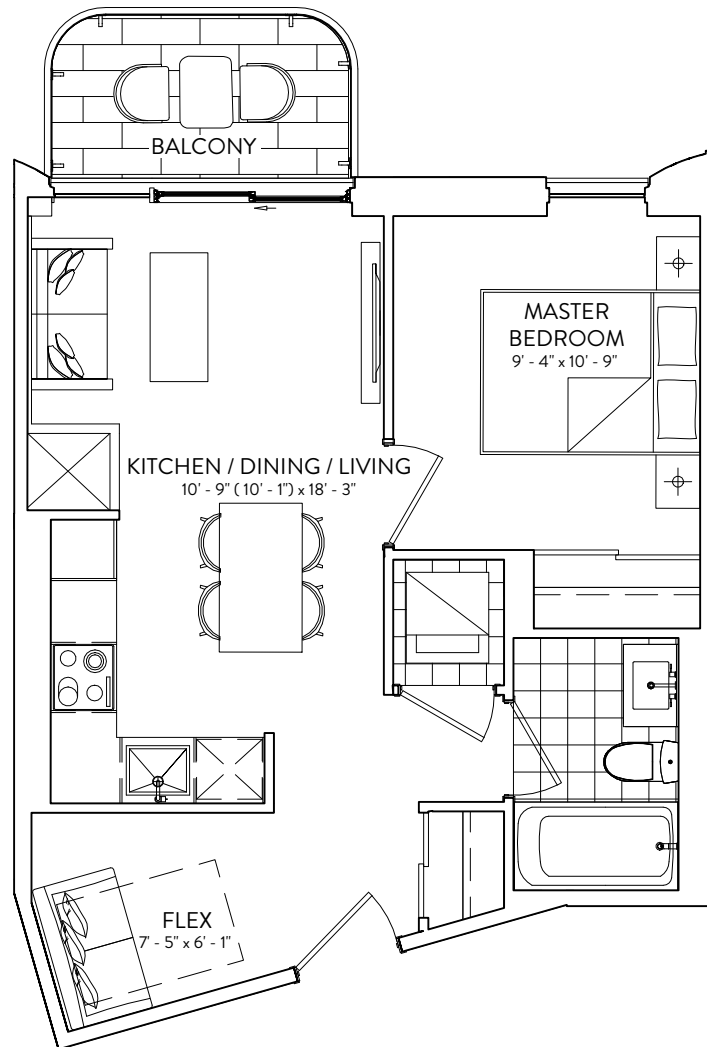
This plan is not to scale and is subject to architectural review and revision. The number of units per Floor and the number of floors may be reduced or increased at the vendor's sole discretion without notice. The purchaser acknowledges that the actual unit purchased may be a reverse layout to the plan shown. All materials, specifications, details and dimensions, if any, are approximate and subject to change without notice in order to comply with building site conditions and municipal, structural, vendor and/or architectural requirements. Actual living areas may vary from floor area stated. Floor areas have been measured and may vary in accordance with Bulletin #22 published by the Tarion Warranty Corporation. Bulkheads are not shown on this plan and may be located in areas of the Unit as required to provide venting and mechanical systems. Balconies, Terraces and Patios, if any, are exclusive use common elements shown for display purposes only and location and size are subject to change without notice. Window location, size and type may vary without notice. The length, width and directional position of the flooring are for illustration purposes only and may vary without notice. E.&O.E.

# 1B+F 508

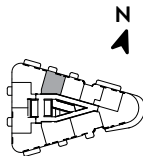
1 BEDROOM + FLEX | 1 BATHROOM

INTERIOR: 508 SF | EXTERIOR: 43 SF

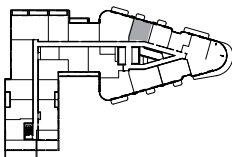
GALLERIA



FLOORS 12-31



FLOORS 9-10



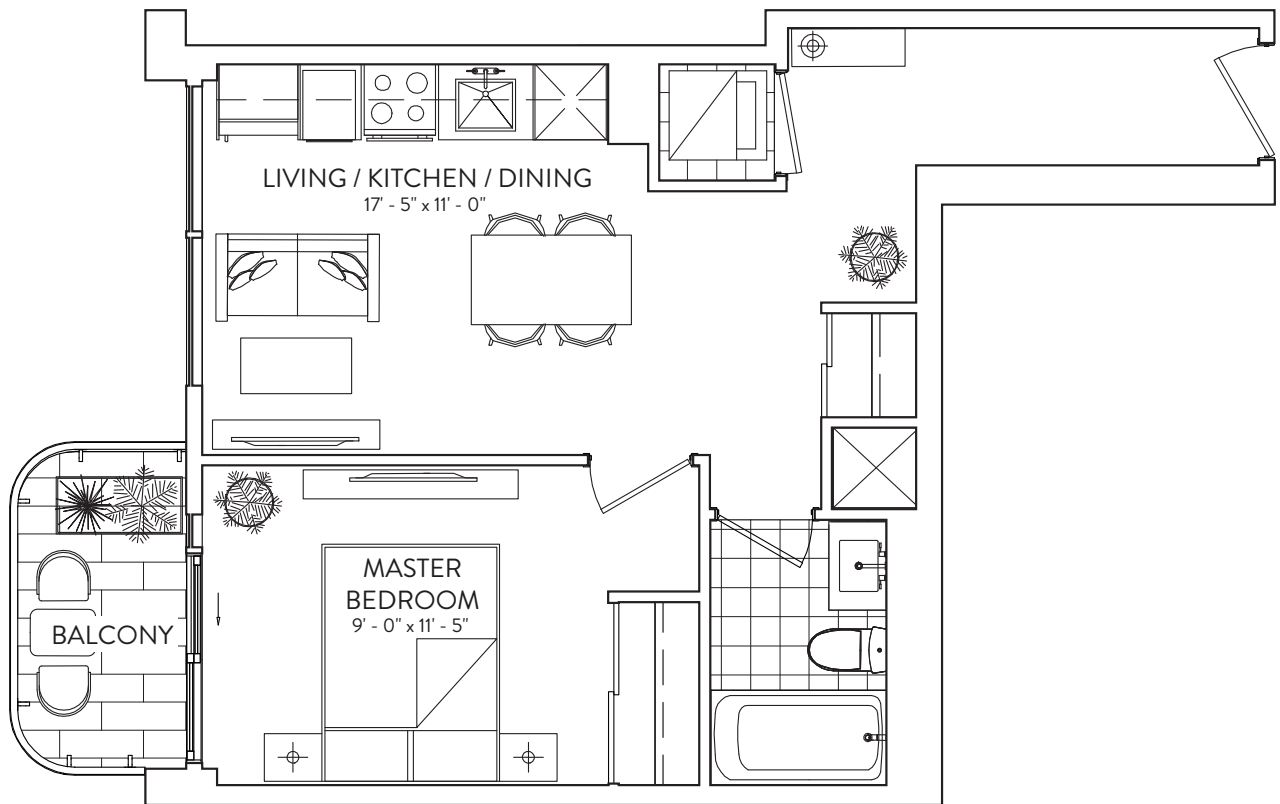
This plan is not to scale and is subject to architectural review and revision. The number of units per Floor and the number of floors may be reduced or increased at the vendor's sole discretion without notice. The purchaser acknowledges that the actual unit purchased may be a reverse layout to the plan shown. All materials, specifications, details and dimensions, if any, are approximate and subject to change without notice in order to comply with building site conditions and municipal, structural, vendor and/or architectural requirements. Actual living areas may vary from floor area stated. Floor areas have been measured and may vary in accordance with Bulletin #22 published by the Tarion Warranty Corporation. Bulkheads are not shown on this plan and may be located in areas of the Unit as required to provide venting and mechanical systems. Balconies, Terraces and Patios, if any, are exclusive use common elements shown for display purposes only and location and size are subject to change without notice. Window location, size and type may vary without notice. The length, width and directional position of the flooring are for illustration purposes only and may vary without notice. E.&O.E.

ELADCANADA

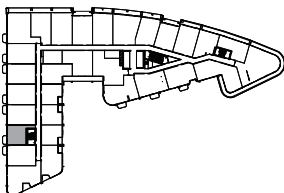
# 1B 517

1 BEDROOM | 1 BATHROOM

INTERIOR: 517 SF | EXTERIOR: 40 SF



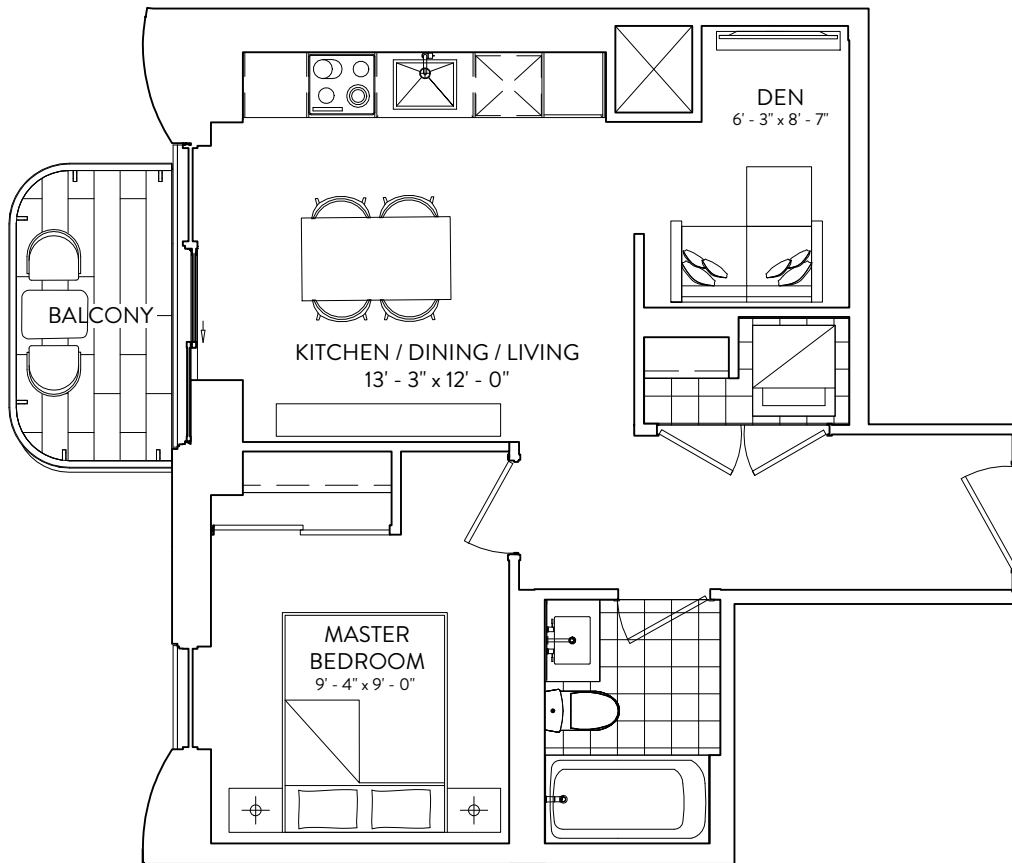
FLOORS 6-7



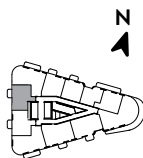
This plan is not to scale and is subject to architectural review and revision. The number of units per Floor and the number of floors may be reduced or increased at the vendor's sole discretion without notice. The purchaser acknowledges that the actual unit purchased may be a reverse layout to the plan shown. All materials, specifications, details and dimensions, if any, are approximate and subject to change without notice in order to comply with building site conditions and municipal, structural, vendor and/or architectural requirements. Actual living areas may vary from floor area stated. Floor areas have been measured and may vary in accordance with Bulletin #22 published by the Tarion Warranty Corporation. Bulkheads are not shown on this plan and may be located in areas of the Unit as required to provide venting and mechanical systems. Balconies, Terraces and Patios, if any, are exclusive use common elements shown for display purposes only and location and size are subject to change without notice. Window location, size and type may vary without notice. The length, width and directional position of the flooring are for illustration purposes only and may vary without notice. E.&O.E.

# 1B+D 543

1 BEDROOM + DEN | 1 BATHROOM  
INTERIOR: 543 SF | EXTERIOR: 40 SF



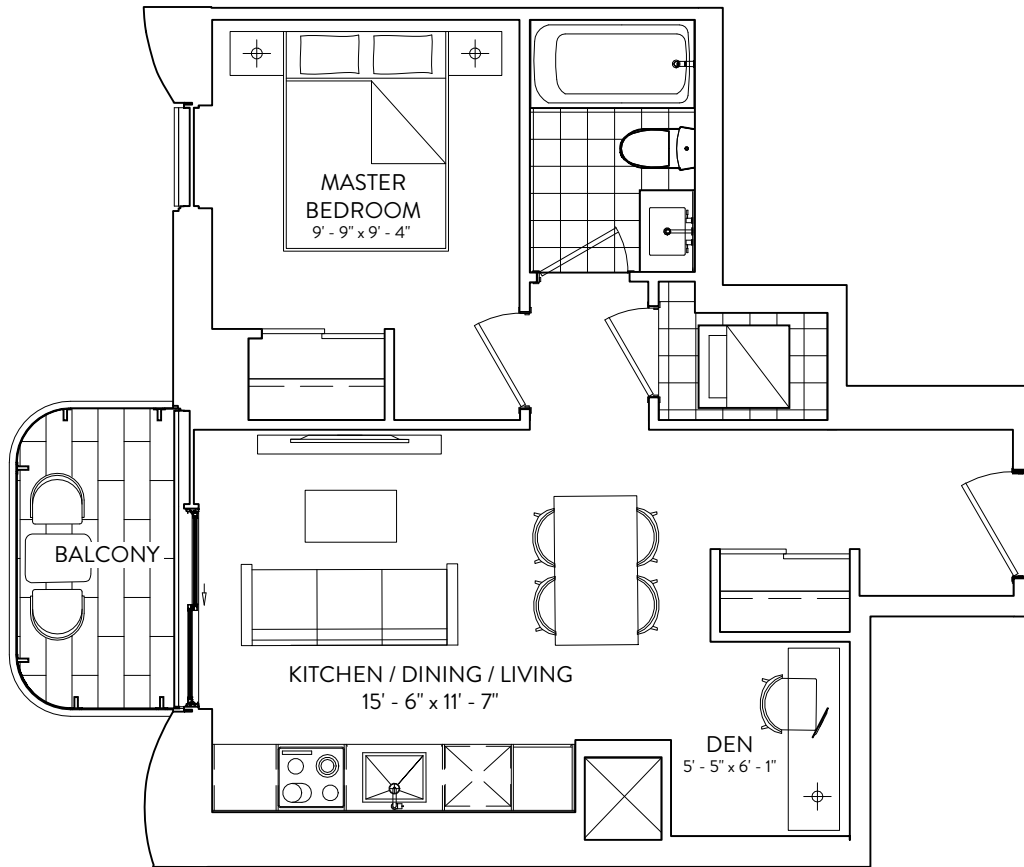
FLOORS 12-31



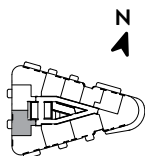
This plan is not to scale and is subject to architectural review and revision. The number of units per Floor and the number of floors may be reduced or increased at the vendor's sole discretion without notice. The purchaser acknowledges that the actual unit purchased may be a reverse layout to the plan shown. All materials, specifications, details and dimensions, if any, are approximate and subject to change without notice in order to comply with building site conditions and municipal, structural, vendor and/or architectural requirements. Actual living areas may vary from floor area stated. Floor areas have been measured and may vary in accordance with Bulletin #22 published by the Tarion Warranty Corporation. Bulkheads are not shown on this plan and may be located in areas of the Unit as required to provide venting and mechanical systems. Balconies, Terraces and Patios, if any, are exclusive use common elements shown for display purposes only and location and size are subject to change without notice. Window location, size and type may vary without notice. The length, width and directional position of the flooring are for illustration purposes only and may vary without notice. E.&O.E.

# 1B+D 544

1 BEDROOM + DEN | 1 BATHROOM  
INTERIOR: 544 SF | EXTERIOR: 43 SF



FLOORS 12-31

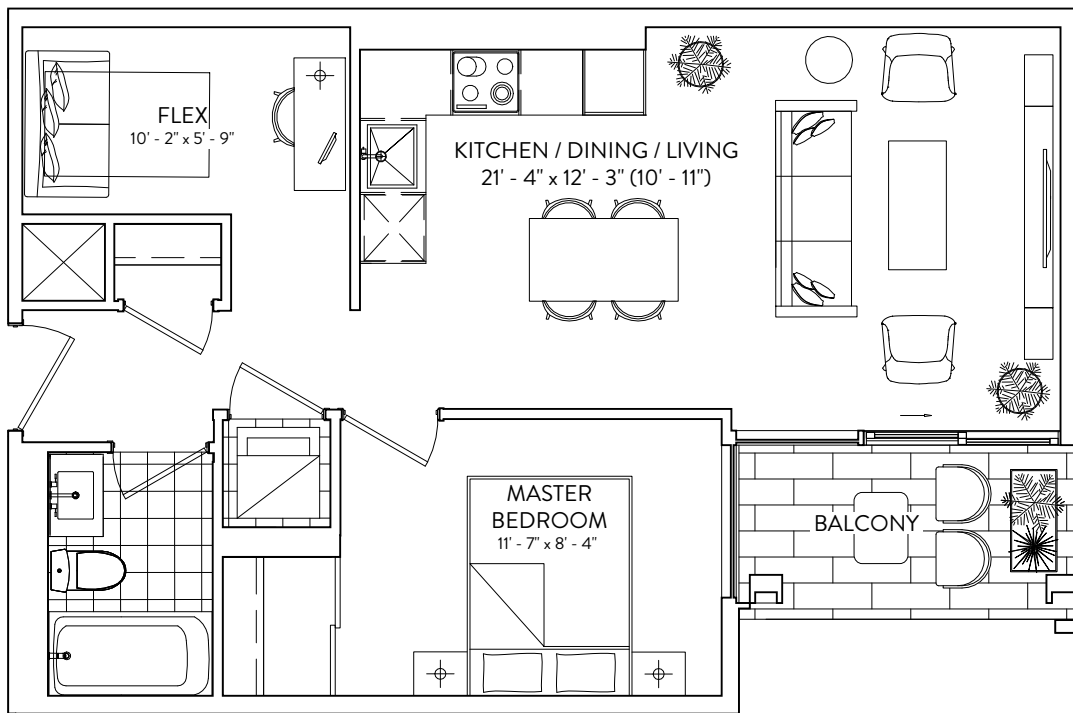


This plan is not to scale and is subject to architectural review and revision. The number of units per Floor and the number of floors may be reduced or increased at the vendor's sole discretion without notice. The purchaser acknowledges that the actual unit purchased may be a reverse layout to the plan shown. All materials, specifications, details and dimensions, if any, are approximate and subject to change without notice in order to comply with building site conditions and municipal, structural, vendor and/or architectural requirements. Actual living areas may vary from floor area stated. Floor areas have been measured and may vary in accordance with Bulletin #22 published by the Tarion Warranty Corporation. Bulkheads are not shown on this plan and may be located in areas of the Unit as required to provide venting and mechanical systems. Balconies, Terraces and Patios, if any, are exclusive use common elements shown for display purposes only and location and size are subject to change without notice. Window location, size and type may vary without notice. The length, width and directional position of the flooring are for illustration purposes only and may vary without notice. E.&O.E.

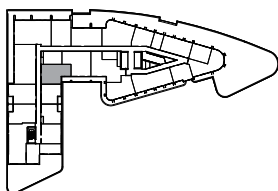
# 1B+F 619

1 BEDROOM + FLEX | 1 BATHROOM  
INTERIOR: 619 SF | EXTERIOR: 43 SF

GALLERIA



FLOORS 8-10



This plan is not to scale and is subject to architectural review and revision. The number of units per Floor and the number of floors may be reduced or increased at the vendor's sole discretion without notice. The purchaser acknowledges that the actual unit purchased may be a reverse layout to the plan shown. All materials, specifications, details and dimensions, if any, are approximate and subject to change without notice in order to comply with building site conditions and municipal, structural, vendor and/or architectural requirements. Actual living areas may vary from floor area stated. Floor areas have been measured and may vary in accordance with Bulletin #22 published by the Tarion Warranty Corporation. Bulkheads are not shown on this plan and may be located in areas of the Unit as required to provide venting and mechanical systems. Balconies, Terraces and Patios, if any, are exclusive use common elements shown for display purposes only and location and size are subject to change without notice. Window location, size and type may vary without notice. The length, width and directional position of the flooring are for illustration purposes only and may vary without notice. E.&O.E.

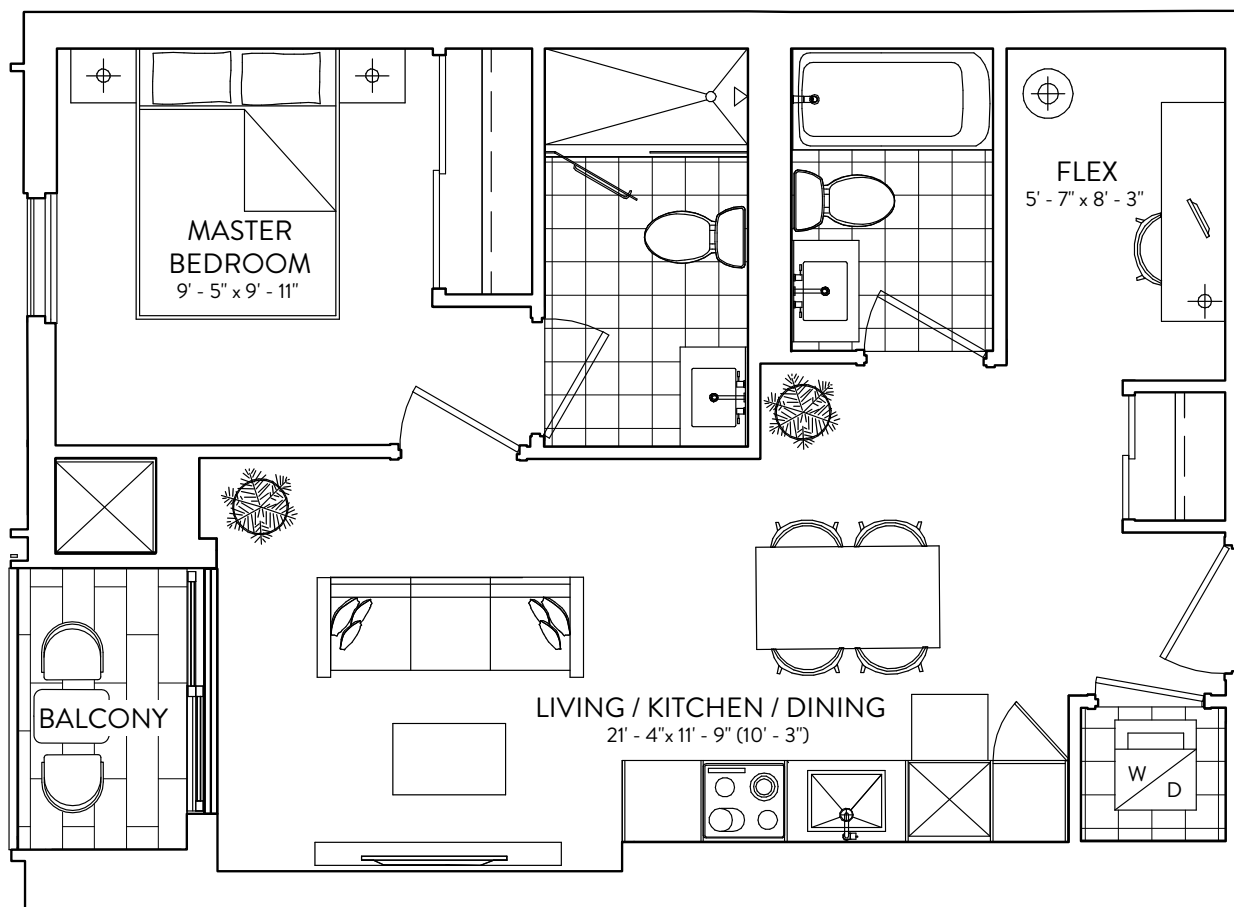
ELADCANADA



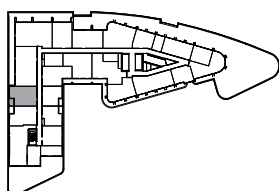
# 1B+F 623

1 BEDROOM + FLEX | 2 BATHROOM  
INTERIOR: 623 SF | EXTERIOR: 40 SF

GALLERIA



FLOORS 8-10



This plan is not to scale and is subject to architectural review and revision. The number of units per Floor and the number of floors may be reduced or increased at the vendor's sole discretion without notice. The purchaser acknowledges that the actual unit purchased may be a reverse layout to the plan shown. All materials, specifications, details and dimensions, if any, are approximate and subject to change without notice in order to comply with building site conditions and municipal, structural, vendor and/or architectural requirements. Actual living areas may vary from floor area stated. Floor areas have been measured and may vary in accordance with Bulletin #22 published by the Tarion Warranty Corporation. Bulkheads are not shown on this plan and may be located in areas of the Unit as required to provide venting and mechanical systems. Balconies, Terraces and Patios, if any, are exclusive use common elements shown for display purposes only and location and size are subject to change without notice. Window location, size and type may vary without notice. The length, width and directional position of the flooring are for illustration purposes only and may vary without notice. E.&O.E.

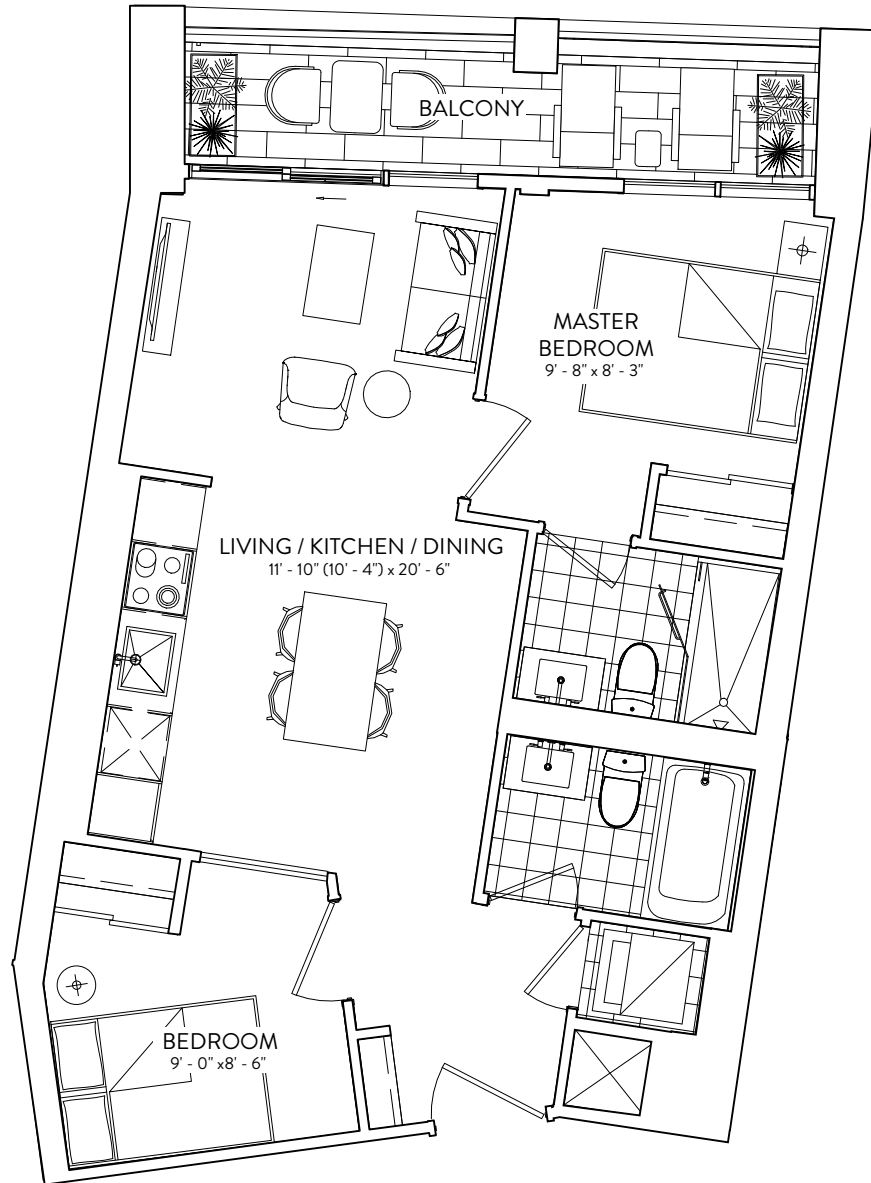
ELADCANADA

# 2B 643

2 BEDROOM | 2 BATHROOM

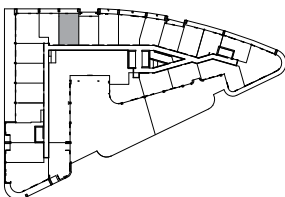
INTERIOR: 643 SF | EXTERIOR: 70 SF

GALLERIA 



BALCONY  
FLOORS 4-7 | EXTERIOR: 65 SF

FLOORS 3-7



This plan is not to scale and is subject to architectural review and revision. The number of units per Floor and the number of floors may be reduced or increased at the vendor's sole discretion without notice. The purchaser acknowledges that the actual unit purchased may be a reverse layout to the plan shown. All materials, specifications, details and dimensions, if any, are approximate and subject to change without notice in order to comply with building site conditions and municipal, structural, vendor and/or architectural requirements. Actual living areas may vary from floor area stated. Floor areas have been measured and may vary in accordance with Bulletin #22 published by the Tarion Warranty Corporation. Bulkheads are not shown on this plan and may be located in areas of the Unit as required to provide venting and mechanical systems. Balconies, Terraces and Patios, if any, are exclusive use common elements shown for display purposes only and location and size are subject to change without notice. Window location, size and type may vary without notice. The length, width and directional position of the flooring are for illustration purposes only and may vary without notice. E.&O.E.

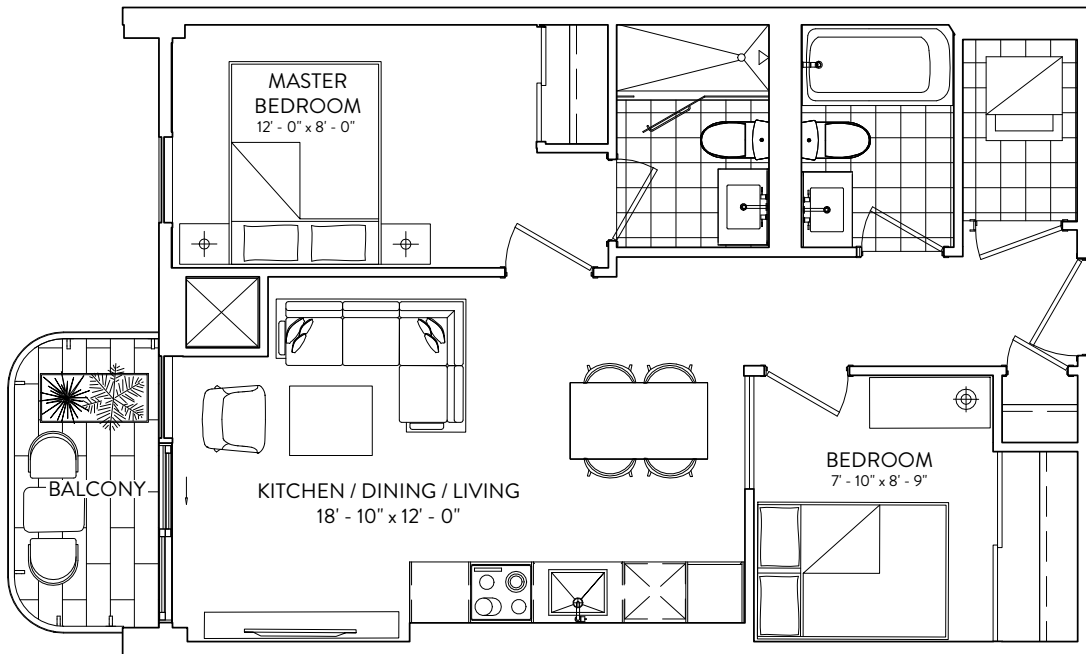
ELADCANADA

# 2B 655

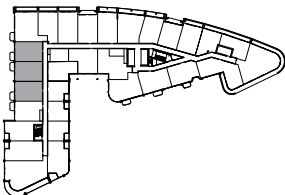
2 BEDROOM | 2 BATHROOM

INTERIOR: 655 SF | EXTERIOR: 41 SF

GALLERIA



FLOORS 4 -7



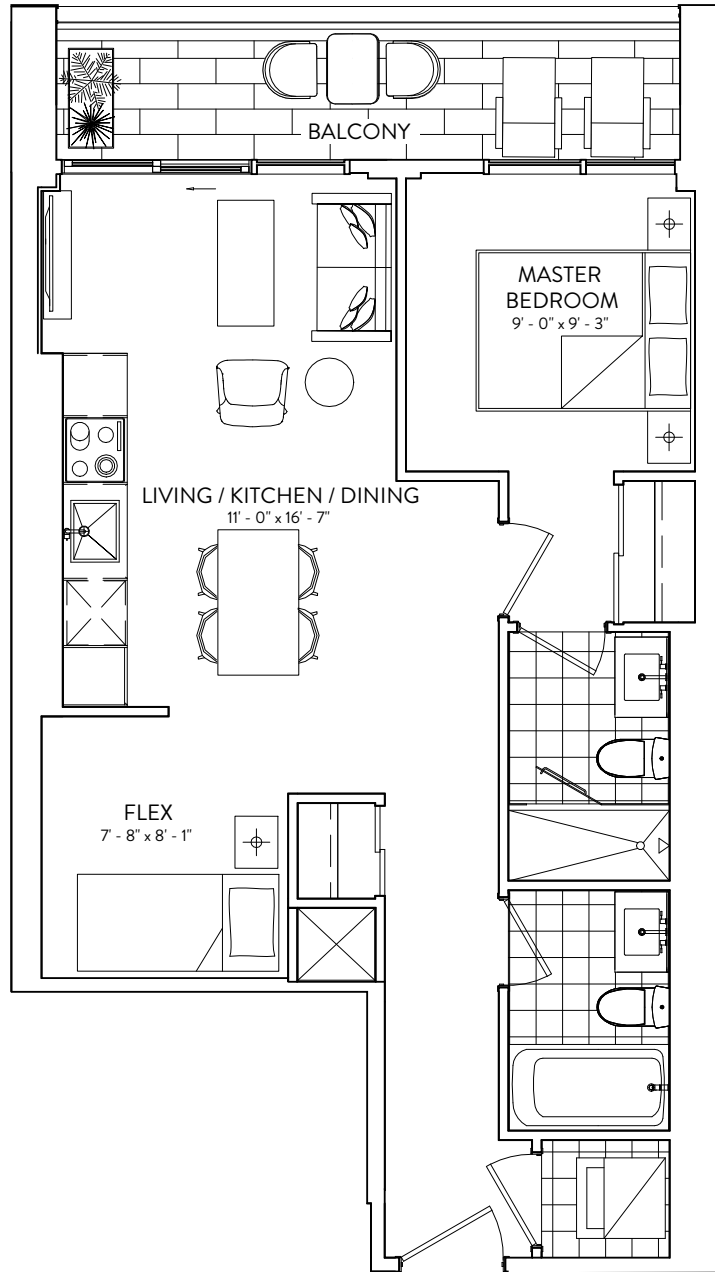
This plan is not to scale and is subject to architectural review and revision. The number of units per Floor and the number of floors may be reduced or increased at the vendor's sole discretion without notice. The purchaser acknowledges that the actual unit purchased may be a reverse layout to the plan shown. All materials, specifications, details and dimensions, if any, are approximate and subject to change without notice in order to comply with building site conditions and municipal, structural, vendor and/or architectural requirements. Actual living areas may vary from floor area stated. Floor areas have been measured and may vary in accordance with Bulletin #22 published by the Tarion Warranty Corporation. Bulkheads are not shown on this plan and may be located in areas of the Unit as required to provide venting and mechanical systems. Balconies, Terraces and Patios, if any, are exclusive use common elements shown for display purposes only and location and size are subject to change without notice. Window location, size and type may vary without notice. The length, width and directional position of the flooring are for illustration purposes only and may vary without notice. E.&O.E.

ELADCANADA

# 1B+F 657

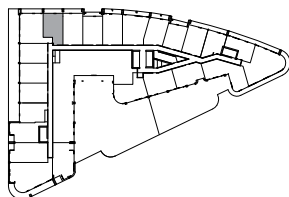
1 BEDROOM + FLEX | 2 BATHROOM  
INTERIOR: 657 SF | EXTERIOR: 65 SF

GALLERIA



BALCONY  
FLOORS 4-7 | EXTERIOR: 75 SF

FLOORS 3-7



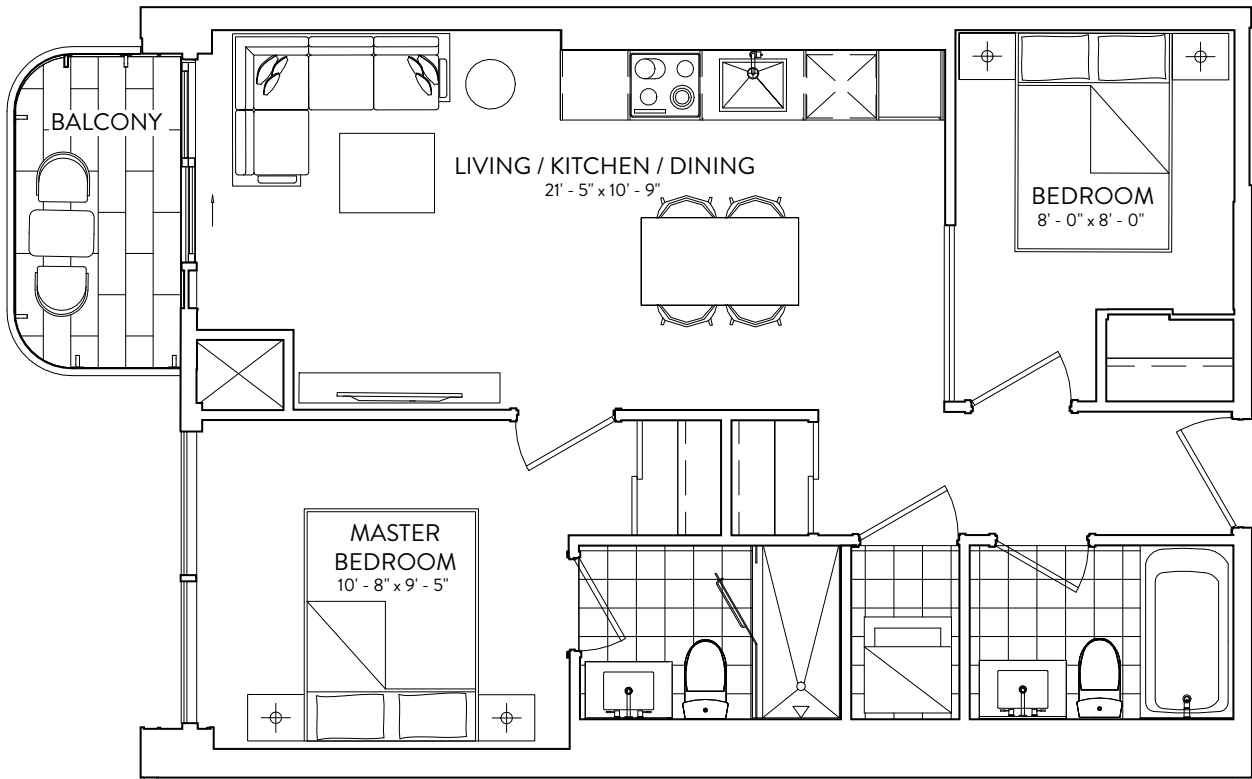
This plan is not to scale and is subject to architectural review and revision. The number of units per Floor and the number of floors may be reduced or increased at the vendor's sole discretion without notice. The purchaser acknowledges that the actual unit purchased may be a reverse layout to the plan shown. All materials, specifications, details and dimensions, if any, are approximate and subject to change without notice in order to comply with building site conditions and municipal, structural, vendor and/or architectural requirements. Actual living areas may vary from floor area stated. Floor areas have been measured and may vary in accordance with Bulletin #22 published by the Tarion Warranty Corporation. Bulkheads are not shown on this plan and may be located in areas of the Unit as required to provide venting and mechanical systems. Balconies, Terraces and Patios, if any, are exclusive use common elements shown for display purposes only and location and size are subject to change without notice. Window location, size and type may vary without notice. The length, width and directional position of the flooring are for illustration purposes only and may vary without notice. E.&O.E.

ELADCANADA

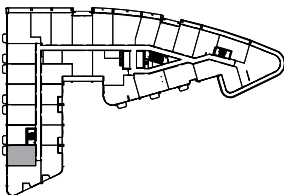
# 2B 661

2 BEDROOM | 2 BATHROOM  
INTERIOR: 661 SF | EXTERIOR: 54 SF

GALLERIA



FLOORS 6-7




This plan is not to scale and is subject to architectural review and revision. The number of units per Floor and the number of floors may be reduced or increased at the vendor's sole discretion without notice. The purchaser acknowledges that the actual unit purchased may be a reverse layout to the plan shown. All materials, specifications, details and dimensions, if any, are approximate and subject to change without notice in order to comply with building site conditions and municipal, structural, vendor and/or architectural requirements. Actual living areas may vary from floor area stated. Floor areas have been measured and may vary in accordance with Bulletin #22 published by the Tarion Warranty Corporation. Bulkheads are not shown on this plan and may be located in areas of the Unit as required to provide venting and mechanical systems. Balconies, Terraces and Patios, if any, are exclusive use common elements shown for display purposes only and location and size are subject to change without notice. Window location, size and type may vary without notice. The length, width and directional position of the flooring are for illustration purposes only and may vary without notice. E.&O.E.

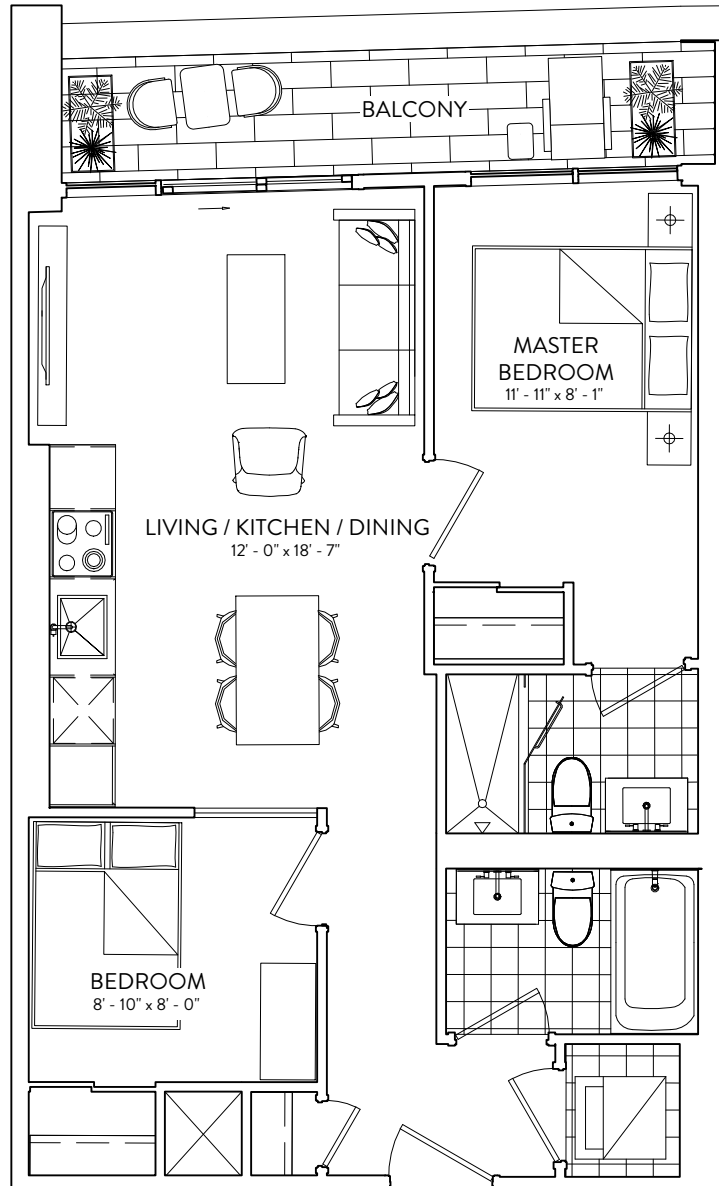
ELADCANADA

# 2B 669

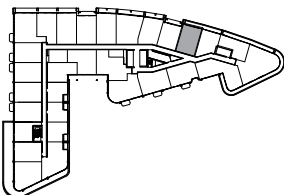
2 BEDROOM | 2 BATHROOM

INTERIOR: 669 SF | EXTERIOR: 74 SF

GALLERIA 



FLOORS 3-7



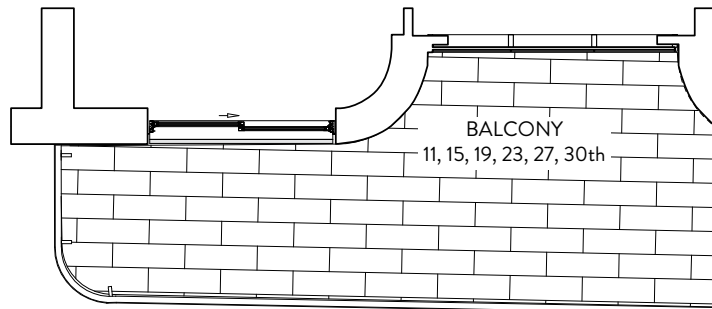
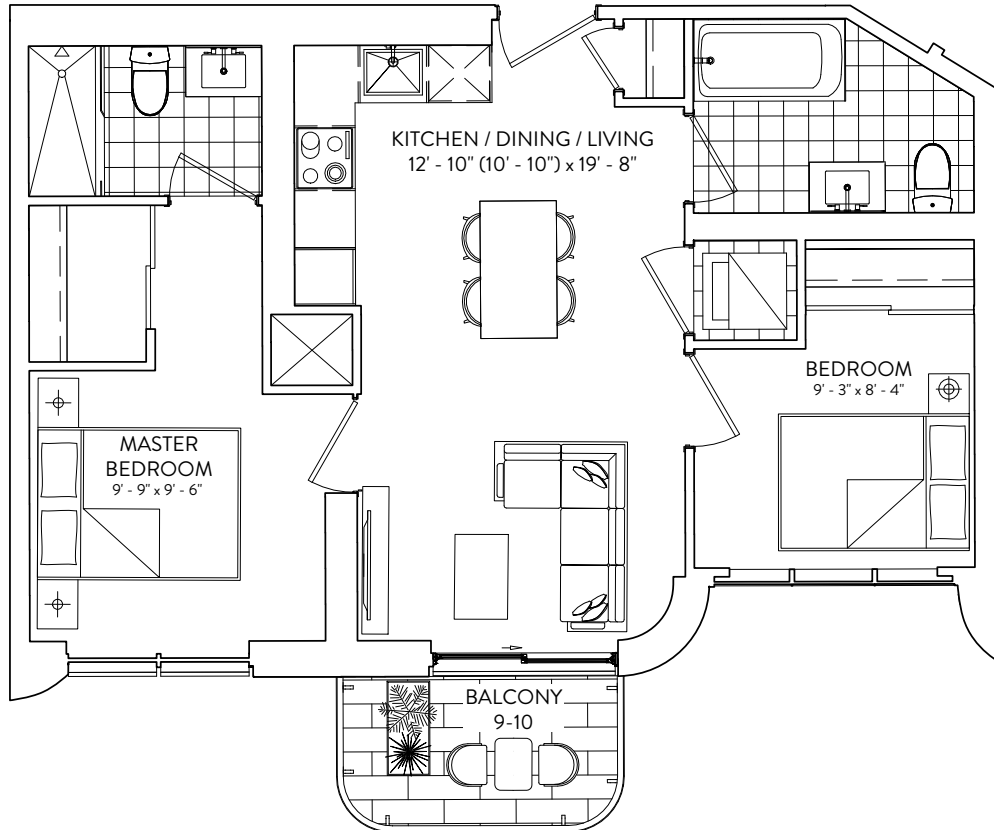
This plan is not to scale and is subject to architectural review and revision. The number of units per Floor and the number of floors may be reduced or increased at the vendor's sole discretion without notice. The purchaser acknowledges that the actual unit purchased may be a reverse layout to the plan shown. All materials, specifications, details and dimensions, if any, are approximate and subject to change without notice in order to comply with building site conditions and municipal, structural, vendor and/or architectural requirements. Actual living areas may vary from floor area stated. Floor areas have been measured and may vary in accordance with Bulletin #22 published by the Tarion Warranty Corporation. Bulkheads are not shown on this plan and may be located in areas of the Unit as required to provide venting and mechanical systems. Balconies, Terraces and Patios, if any, are exclusive use common elements shown for display purposes only and location and size are subject to change without notice. Window location, size and type may vary without notice. The length, width and directional position of the flooring are for illustration purposes only and may vary without notice. E.&O.E.

ELADCANADA

# 2B 670

2 BEDROOM | 2 BATHROOM

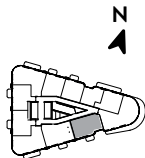
INTERIOR: 670 SF | EXTERIOR: 140 SF



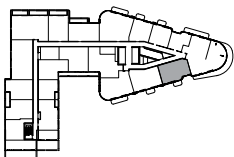
BALCONY  
FLOORS 9, 10 | EXTERIOR: 43 SF

FLOORS 11, 15, 19, 23,  
27, 30 | EXTERIOR: 140 SF

FLOORS 11-31



FLOORS 9-10

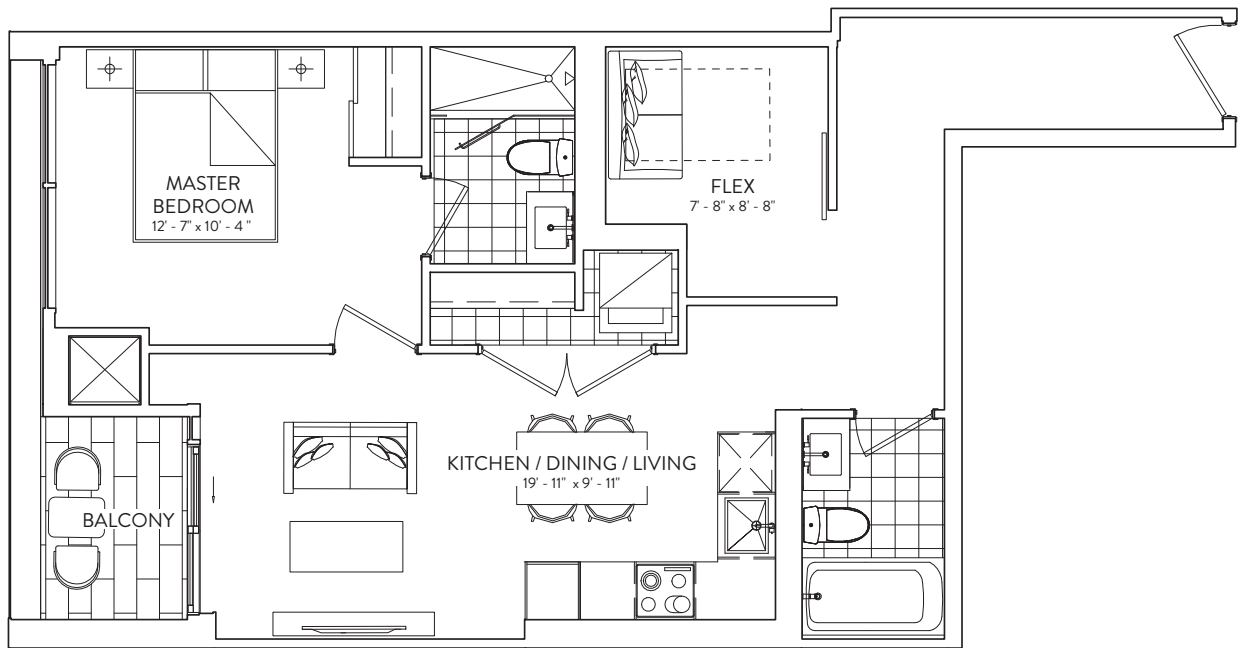


This plan is not to scale and is subject to architectural review and revision. The number of units per Floor and the number of floors may be reduced or increased at the vendor's sole discretion without notice. The purchaser acknowledges that the actual unit purchased may be a reverse layout to the plan shown. All materials, specifications, details and dimensions, if any, are approximate and subject to change without notice in order to comply with building site conditions and municipal, structural, vendor and/or architectural requirements. Actual living areas may vary from floor area stated. Floor areas have been measured and may vary in accordance with Bulletin #22 published by the Tarion Warranty Corporation. Bulkheads are not shown on this plan and may be located in areas of the Unit as required to provide venting and mechanical systems. Balconies, Terraces and Patios, if any, are exclusive use common elements shown for display purposes only and location and size are subject to change without notice. Window location, size and type may vary without notice. The length, width and directional position of the flooring are for illustration purposes only and may vary without notice. E.&O.E.

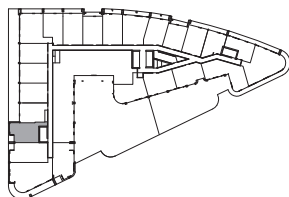
# 1B+F 721

1 BEDROOM + FLEX | 1 BATHROOM  
INTERIOR: 721 SF | EXTERIOR: 35 SF

GALLERIA



FLOORS 3-4



This plan is not to scale and is subject to architectural review and revision. The number of units per Floor and the number of floors may be reduced or increased at the vendor's sole discretion without notice. The purchaser acknowledges that the actual unit purchased may be a reverse layout to the plan shown. All materials, specifications, details and dimensions, if any, are approximate and subject to change without notice in order to comply with building site conditions and municipal, structural, vendor and/or architectural requirements. Actual living areas may vary from floor area stated. Floor areas have been measured and may vary in accordance with Bulletin #22 published by the Tarion Warranty Corporation. Bulkheads are not shown on this plan and may be located in areas of the Unit as required to provide venting and mechanical systems. Balconies, Terraces and Patios, if any, are exclusive use common elements shown for display purposes only and location and size are subject to change without notice. Window location, size and type may vary without notice. The length, width and directional position of the flooring are for illustration purposes only and may vary without notice. E.&O.E.


ELADCANADA

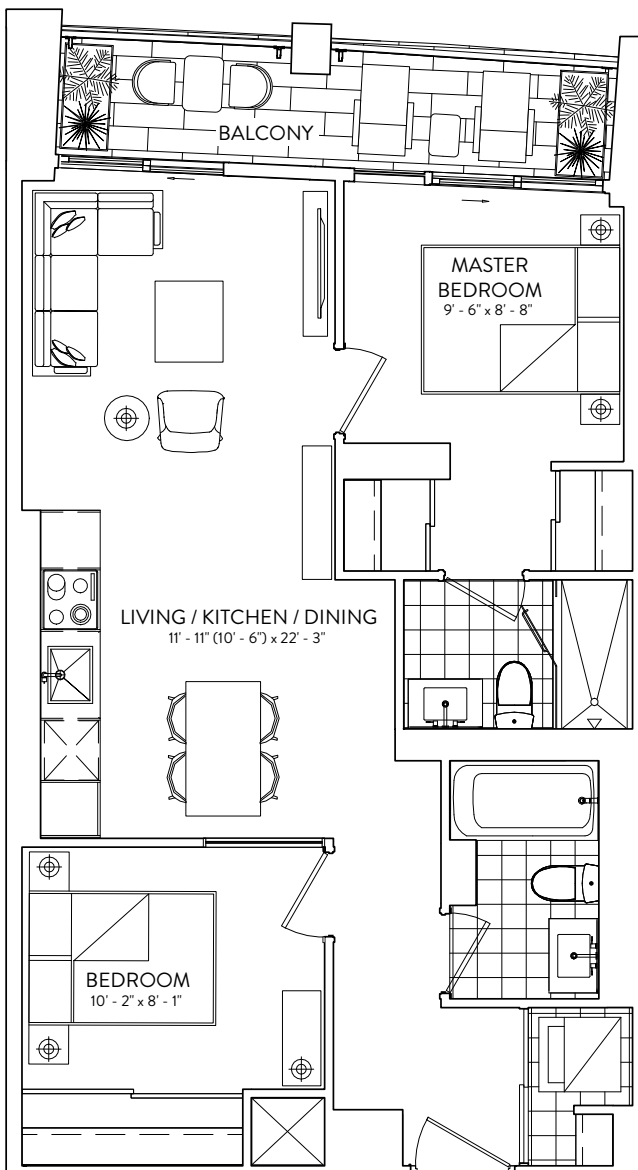


# 2B 737

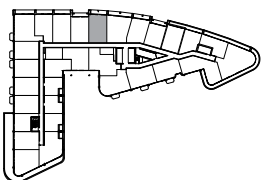
2 BEDROOM | 2 BATHROOM

INTERIOR: 737 SF | EXTERIOR: 70 SF

GALLERIA 



FLOORS 3-7



This plan is not to scale and is subject to architectural review and revision. The number of units per Floor and the number of floors may be reduced or increased at the vendor's sole discretion without notice. The purchaser acknowledges that the actual unit purchased may be a reverse layout to the plan shown. All materials, specifications, details and dimensions, if any, are approximate and subject to change without notice in order to comply with building site conditions and municipal, structural, vendor and/or architectural requirements. Actual living areas may vary from floor area stated. Floor areas have been measured and may vary in accordance with Bulletin #22 published by the Tarion Warranty Corporation. Bulkheads are not shown on this plan and may be located in areas of the Unit as required to provide venting and mechanical systems. Balconies, Terraces and Patios, if any, are exclusive use common elements shown for display purposes only and location and size are subject to change without notice. Window location, size and type may vary without notice. The length, width and directional position of the flooring are for illustration purposes only and may vary without notice. E.&O.E.

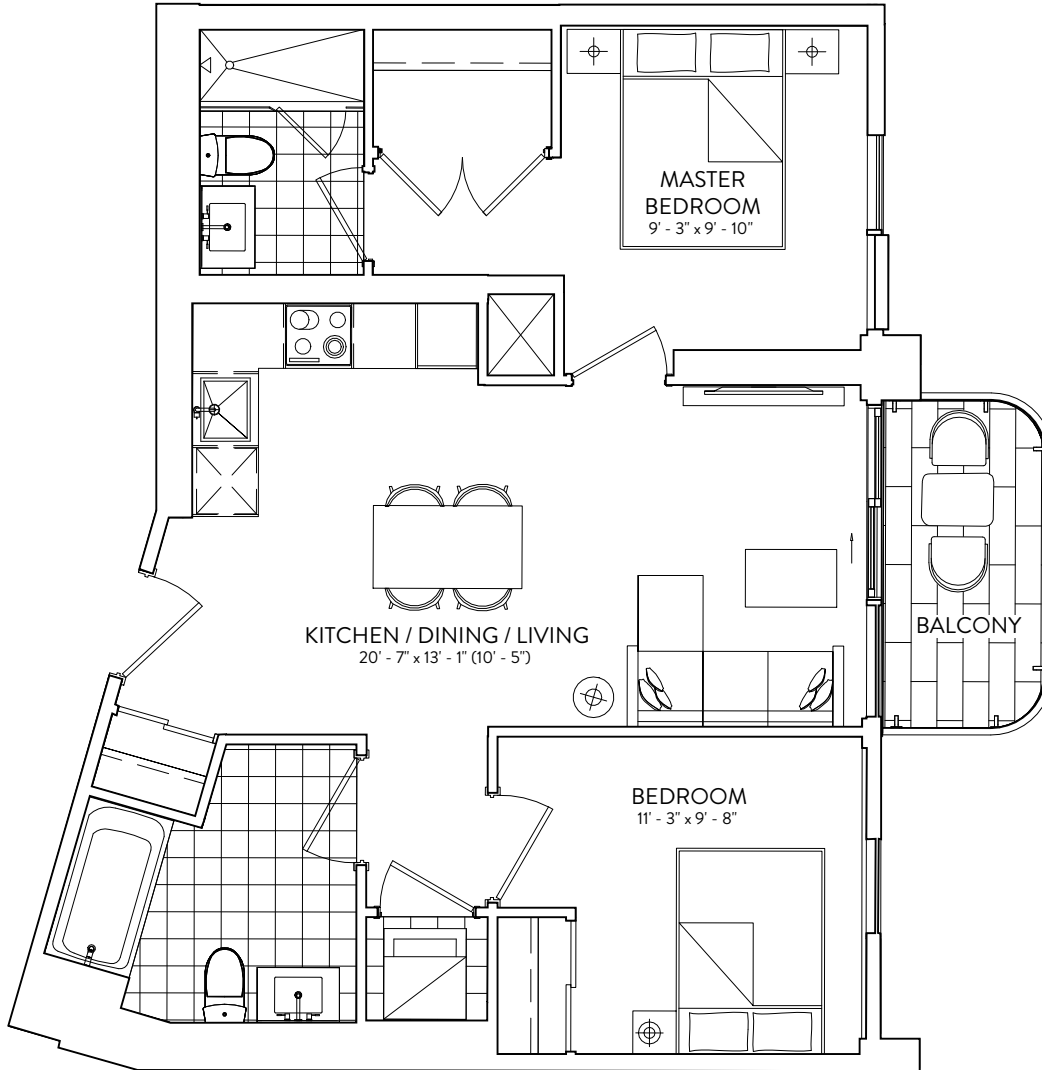
ELADCANADA

# 2B 746

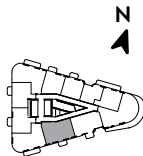
2 BEDROOM | 2 BATHROOM

INTERIOR: 746 SF | EXTERIOR: 43 SF

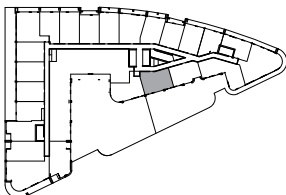
GALLERIA 



FLOORS 12-31



FLOORS 4-7, 9-11

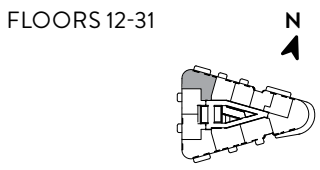
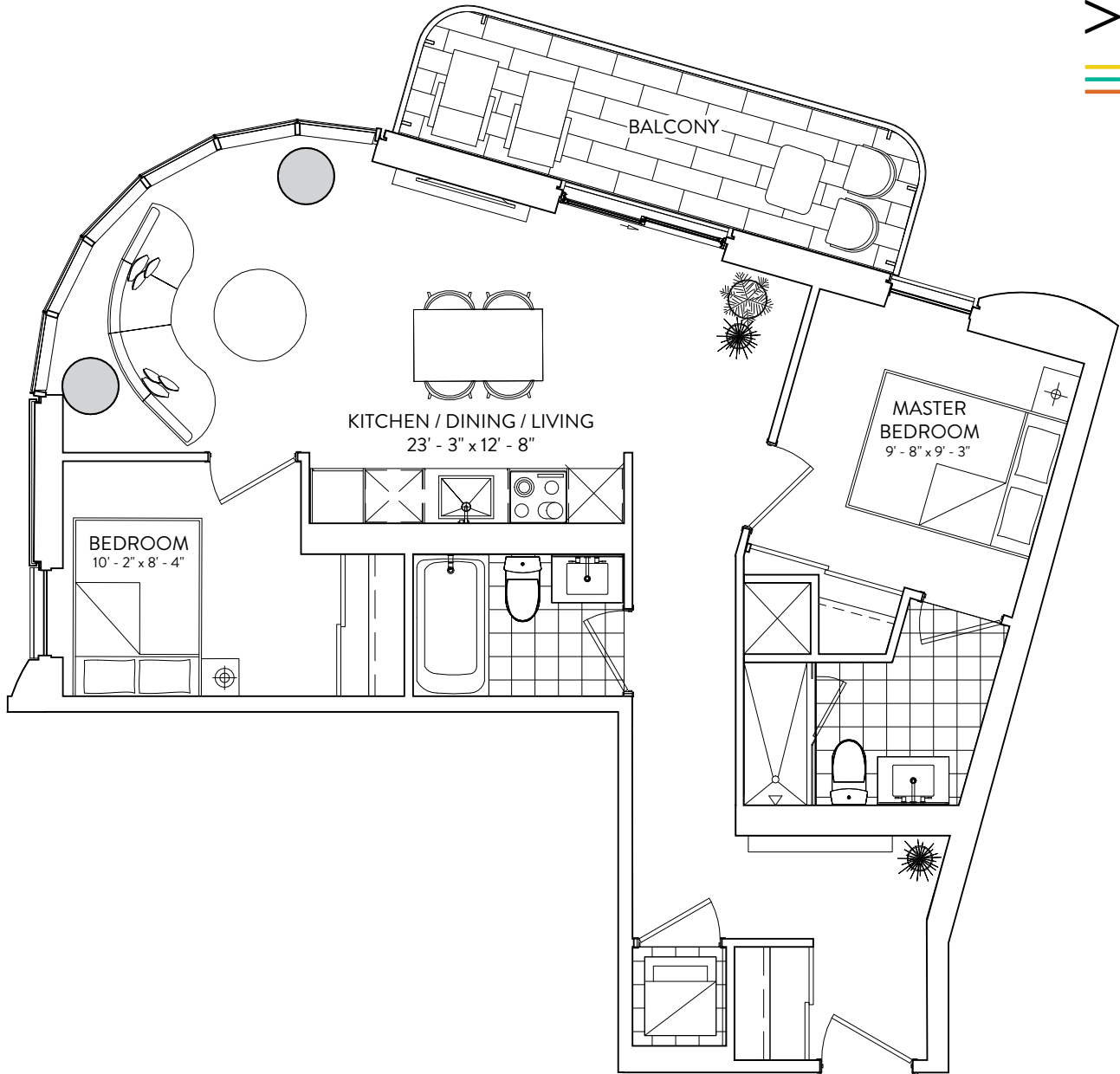


This plan is not to scale and is subject to architectural review and revision. The number of units per Floor and the number of floors may be reduced or increased at the vendor's sole discretion without notice. The purchaser acknowledges that the actual unit purchased may be a reverse layout to the plan shown. All materials, specifications, details and dimensions, if any, are approximate and subject to change without notice in order to comply with building site conditions and municipal, structural, vendor and/or architectural requirements. Actual living areas may vary from floor area stated. Floor areas have been measured and may vary in accordance with Bulletin #22 published by the Tarion Warranty Corporation. Bulkheads are not shown on this plan and may be located in areas of the Unit as required to provide venting and mechanical systems. Balconies, Terraces and Patios, if any, are exclusive use common elements shown for display purposes only and location and size are subject to change without notice. Window location, size and type may vary without notice. The length, width and directional position of the flooring are for illustration purposes only and may vary without notice. E.&O.E.

ELADCANADA

# 2B 786

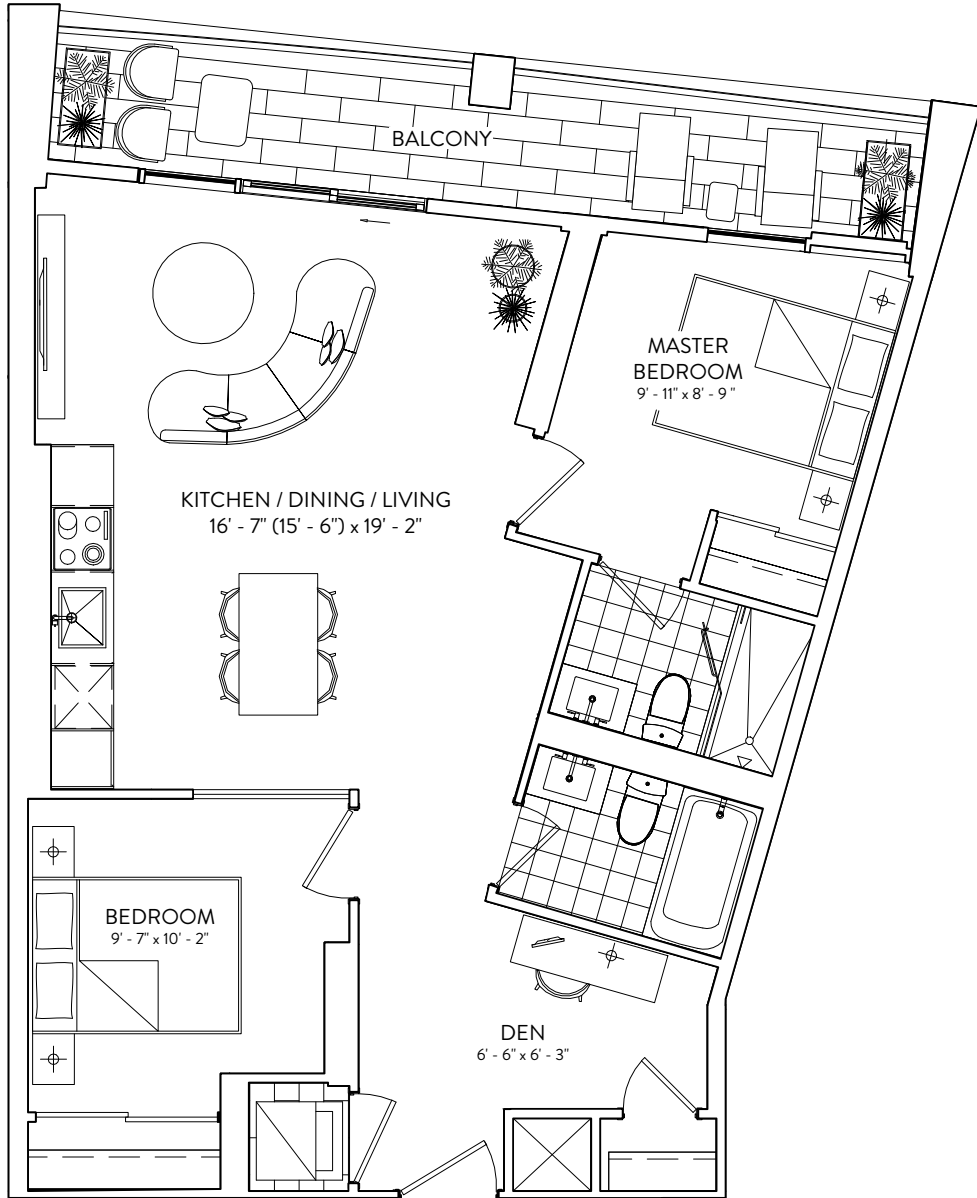
2 BEDROOM | 2 BATHROOM  
INTERIOR: 786 SF | EXTERIOR: 85 SF




This plan is not to scale and is subject to architectural review and revision. The number of units per Floor and the number of floors may be reduced or increased at the vendor's sole discretion without notice. The purchaser acknowledges that the actual unit purchased may be a reverse layout to the plan shown. All materials, specifications, details and dimensions, if any, are approximate and subject to change without notice in order to comply with building site conditions and municipal, structural, vendor and/or architectural requirements. Actual living areas may vary from floor area stated. Floor areas have been measured and may vary in accordance with Bulletin #22 published by the Tarion Warranty Corporation. Bulkheads are not shown on this plan and may be located in areas of the Unit as required to provide venting and mechanical systems. Balconies, Terraces and Patios, if any, are exclusive use common elements shown for display purposes only and location and size are subject to change without notice. Window location, size and type may vary without notice. The length, width and directional position of the flooring are for illustration purposes only and may vary without notice. E.&O.E.

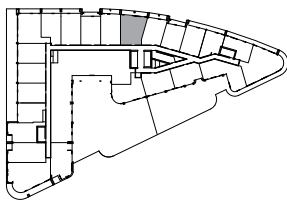
# 2B+D 822

2 BEDROOM + DEN | 2 BATHROOM  
 INTERIOR: 822 SF | EXTERIOR: 115 SF



BALCONY  
 FLOOR 3 | EXTERIOR: 115 SF  
 FLOORS 4-7 | EXTERIOR: 107 SF

FLOORS 3-7 




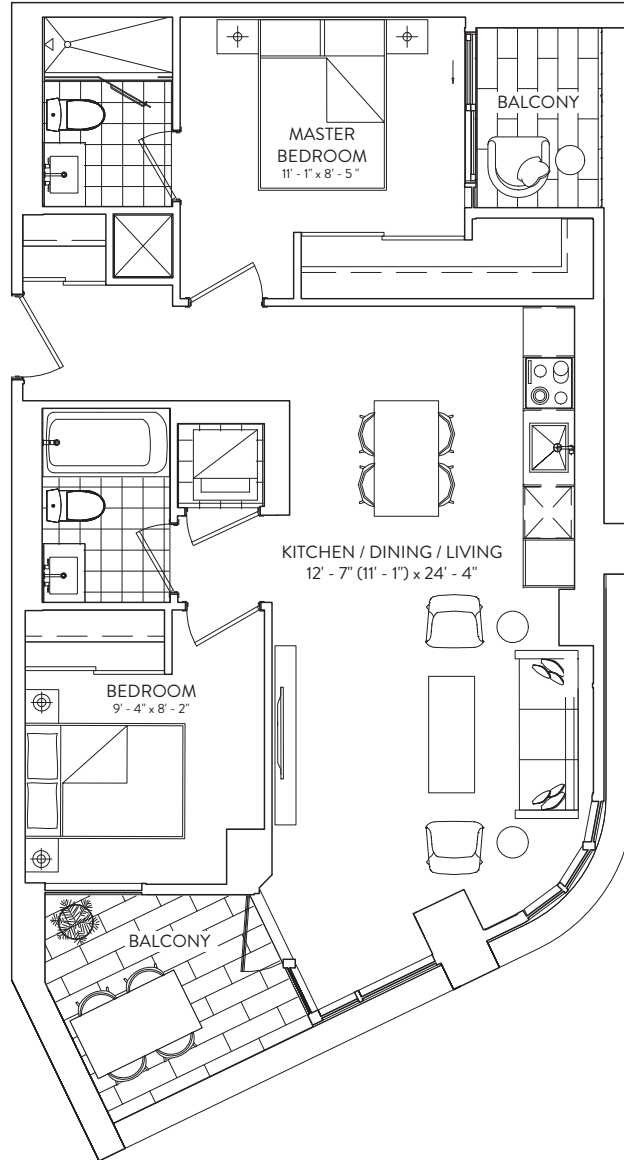
This plan is not to scale and is subject to architectural review and revision. The number of units per Floor and the number of floors may be reduced or increased at the vendor's sole discretion without notice. The purchaser acknowledges that the actual unit purchased may be a reverse layout to the plan shown. All materials, specifications, details and dimensions, if any, are approximate and subject to change without notice in order to comply with building site conditions and municipal, structural, vendor and/or architectural requirements. Actual living areas may vary from floor area stated. Floor areas have been measured and may vary in accordance with Bulletin #22 published by the Tarion Warranty Corporation. Bulkheads are not shown on this plan and may be located in areas of the Unit as required to provide venting and mechanical systems. Balconies, Terraces and Patios, if any, are exclusive use common elements shown for display purposes only and location and size are subject to change without notice. Window location, size and type may vary without notice. The length, width and directional position of the flooring are for illustration purposes only and may vary without notice. E.&O.E.

# 2B 825

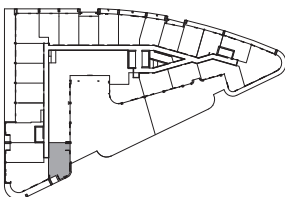
2 BEDROOM | 2 BATHROOM

INTERIOR: 825 SF | EXTERIOR: 34 SF

GALLERIA 



FLOORS 3-4



This plan is not to scale and is subject to architectural review and revision. The number of units per Floor and the number of floors may be reduced or increased at the vendor's sole discretion without notice. The purchaser acknowledges that the actual unit purchased may be a reverse layout to the plan shown. All materials, specifications, details and dimensions, if any, are approximate and subject to change without notice in order to comply with building site conditions and municipal, structural, vendor and/or architectural requirements. Actual living areas may vary from floor area stated. Floor areas have been measured and may vary in accordance with Bulletin #22 published by the Tarion Warranty Corporation. Bulkheads are not shown on this plan and may be located in areas of the Unit as required to provide venting and mechanical systems. Balconies, Terraces and Patios, if any, are exclusive use common elements shown for display purposes only and location and size are subject to change without notice. Window location, size and type may vary without notice. The length, width and directional position of the flooring are for illustration purposes only and may vary without notice. E.&O.E.

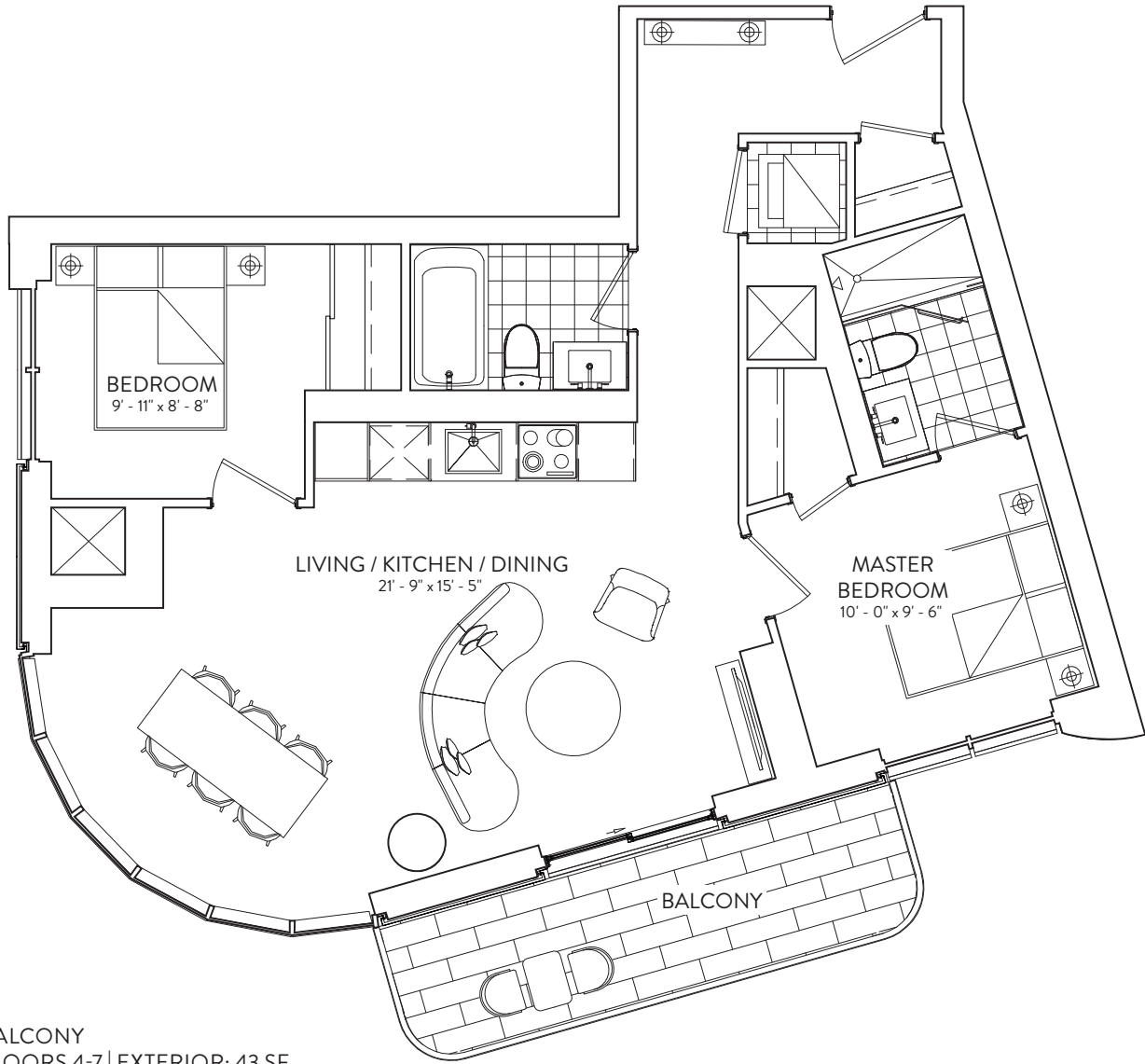
ELADCANADA

# 2B 843

2 BEDROOM | 2 BATHROOM

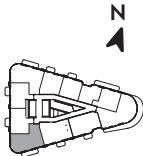
INTERIOR: 843 SF | EXTERIOR: 87 SF

GALLERIA 

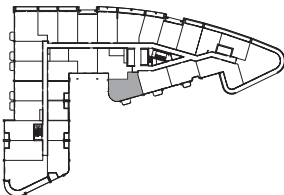


BALCONY  
FLOORS 4-7 | EXTERIOR: 43 SF

FLOORS 9-31



FLOORS 4-7



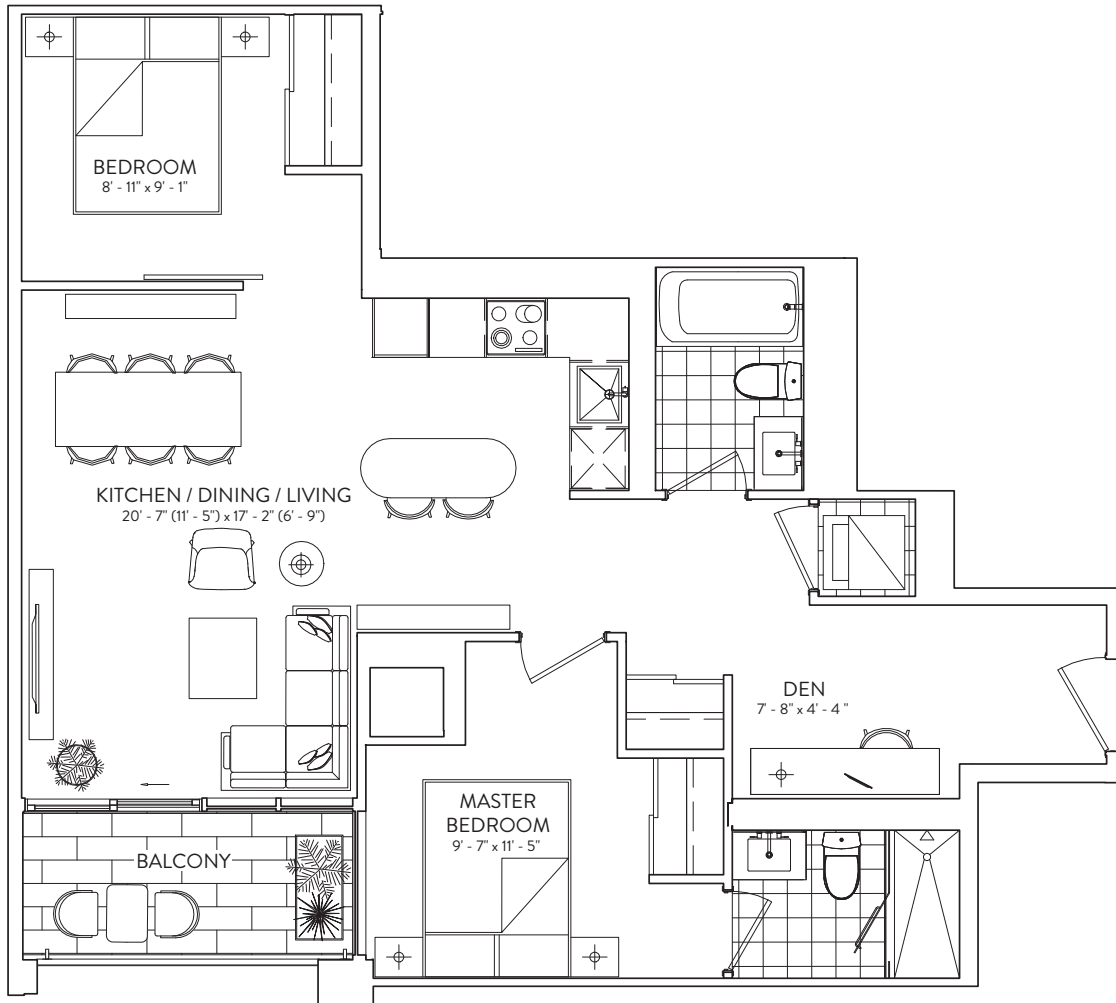
This plan is not to scale and is subject to architectural review and revision. The number of units per Floor and the number of floors may be reduced or increased at the vendor's sole discretion without notice. The purchaser acknowledges that the actual unit purchased may be a reverse layout to the plan shown. All materials, specifications, details and dimensions, if any, are approximate and subject to change without notice in order to comply with building site conditions and municipal, structural, vendor and/or architectural requirements. Actual living areas may vary from floor area stated. Floor areas have been measured and may vary in accordance with Bulletin #22 published by the Tarion Warranty Corporation. Bulkheads are not shown on this plan and may be located in areas of the Unit as required to provide venting and mechanical systems. Balconies, Terraces and Patios, if any, are exclusive use common elements shown for display purposes only and location and size are subject to change without notice. Window location, size and type may vary without notice. The length, width and directional position of the flooring are for illustration purposes only and may vary without notice. E.&O.E.



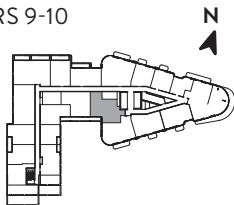
# 2B+D 859

2 BEDROOM + DEN | 2 BATHROOM  
INTERIOR: 859 SF | EXTERIOR: 54 SF

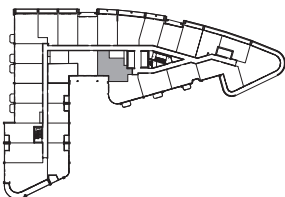
GALLERIA



FLOORS 9-10



FLOORS 4-7



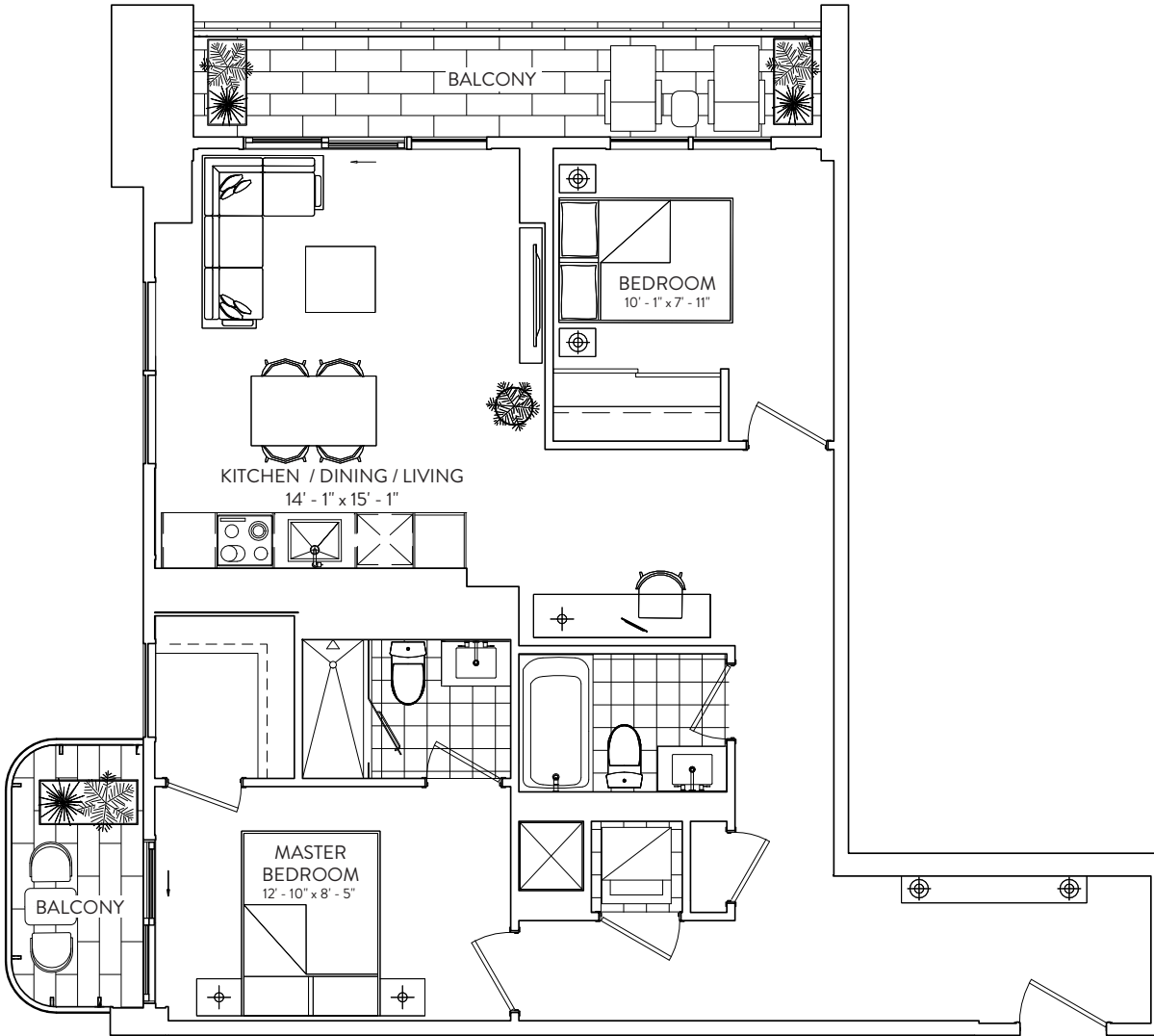
This plan is not to scale and is subject to architectural review and revision. The number of units per Floor and the number of floors may be reduced or increased at the vendor's sole discretion without notice. The purchaser acknowledges that the actual unit purchased may be a reverse layout to the plan shown. All materials, specifications, details and dimensions, if any, are approximate and subject to change without notice in order to comply with building site conditions and municipal, structural, vendor and/or architectural requirements. Actual living areas may vary from floor area stated. Floor areas have been measured and may vary in accordance with Bulletin #22 published by the Tarion Warranty Corporation. Bulkheads are not shown on this plan and may be located in areas of the Unit as required to provide venting and mechanical systems. Balconies, Terraces and Patios, if any, are exclusive use common elements shown for display purposes only and location and size are subject to change without notice. Window location, size and type may vary without notice. The length, width and directional position of the flooring are for illustration purposes only and may vary without notice. E.&O.E.



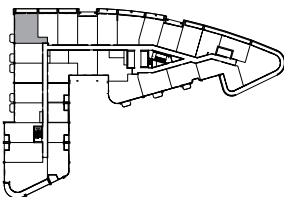
# 2B+D 917

2 BEDROOM + DEN | 2 BATHROOM  
INTERIOR: 917 SF | EXTERIOR: 136 SF

GALLERIA



FLOORS 4-7



This plan is not to scale and is subject to architectural review and revision. The number of units per Floor and the number of floors may be reduced or increased at the vendor's sole discretion without notice. The purchaser acknowledges that the actual unit purchased may be a reverse layout to the plan shown. All materials, specifications, details and dimensions, if any, are approximate and subject to change without notice in order to comply with building site conditions and municipal, structural, vendor and/or architectural requirements. Actual living areas may vary from floor area stated. Floor areas have been measured and may vary in accordance with Bulletin #22 published by the Tarion Warranty Corporation. Bulkheads are not shown on this plan and may be located in areas of the Unit as required to provide venting and mechanical systems. Balconies, Terraces and Patios, if any, are exclusive use common elements shown for display purposes only and location and size are subject to change without notice. Window location, size and type may vary without notice. The length, width and directional position of the flooring are for illustration purposes only and may vary without notice. E.&O.E.

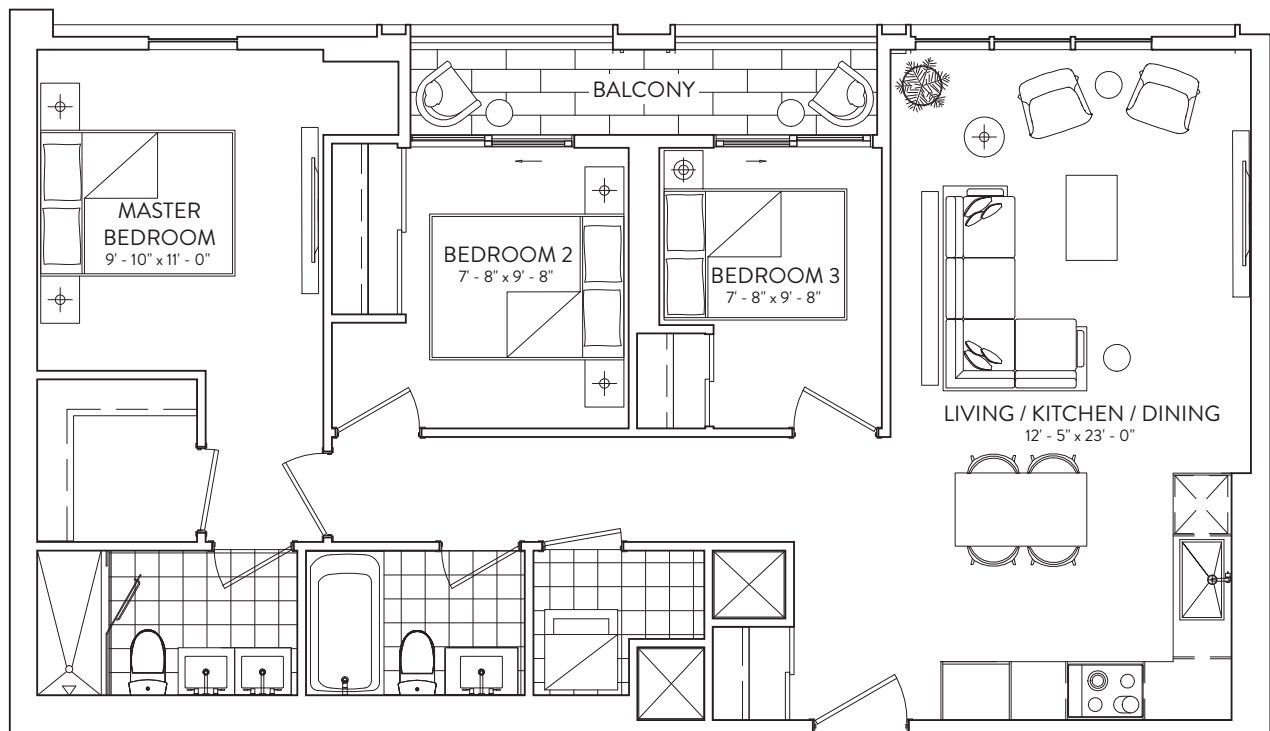
ELADCANADA

# 3B 975

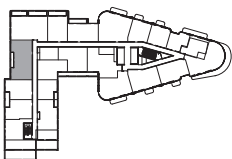
3 BEDROOM | 2 BATHROOM

INTERIOR: 975 SF | EXTERIOR: 52 SF

GALLERIA



FLOORS 9-10



This plan is not to scale and is subject to architectural review and revision. The number of units per Floor and the number of floors may be reduced or increased at the vendor's sole discretion without notice. The purchaser acknowledges that the actual unit purchased may be a reverse layout to the plan shown. All materials, specifications, details and dimensions, if any, are approximate and subject to change without notice in order to comply with building site conditions and municipal, structural, vendor and/or architectural requirements. Actual living areas may vary from floor area stated. Floor areas have been measured and may vary in accordance with Bulletin #22 published by the Tarion Warranty Corporation. Bulkheads are not shown on this plan and may be located in areas of the Unit as required to provide venting and mechanical systems. Balconies, Terraces and Patios, if any, are exclusive use common elements shown for display purposes only and location and size are subject to change without notice. Window location, size and type may vary without notice. The length, width and directional position of the flooring are for illustration purposes only and may vary without notice. E.&O.E.

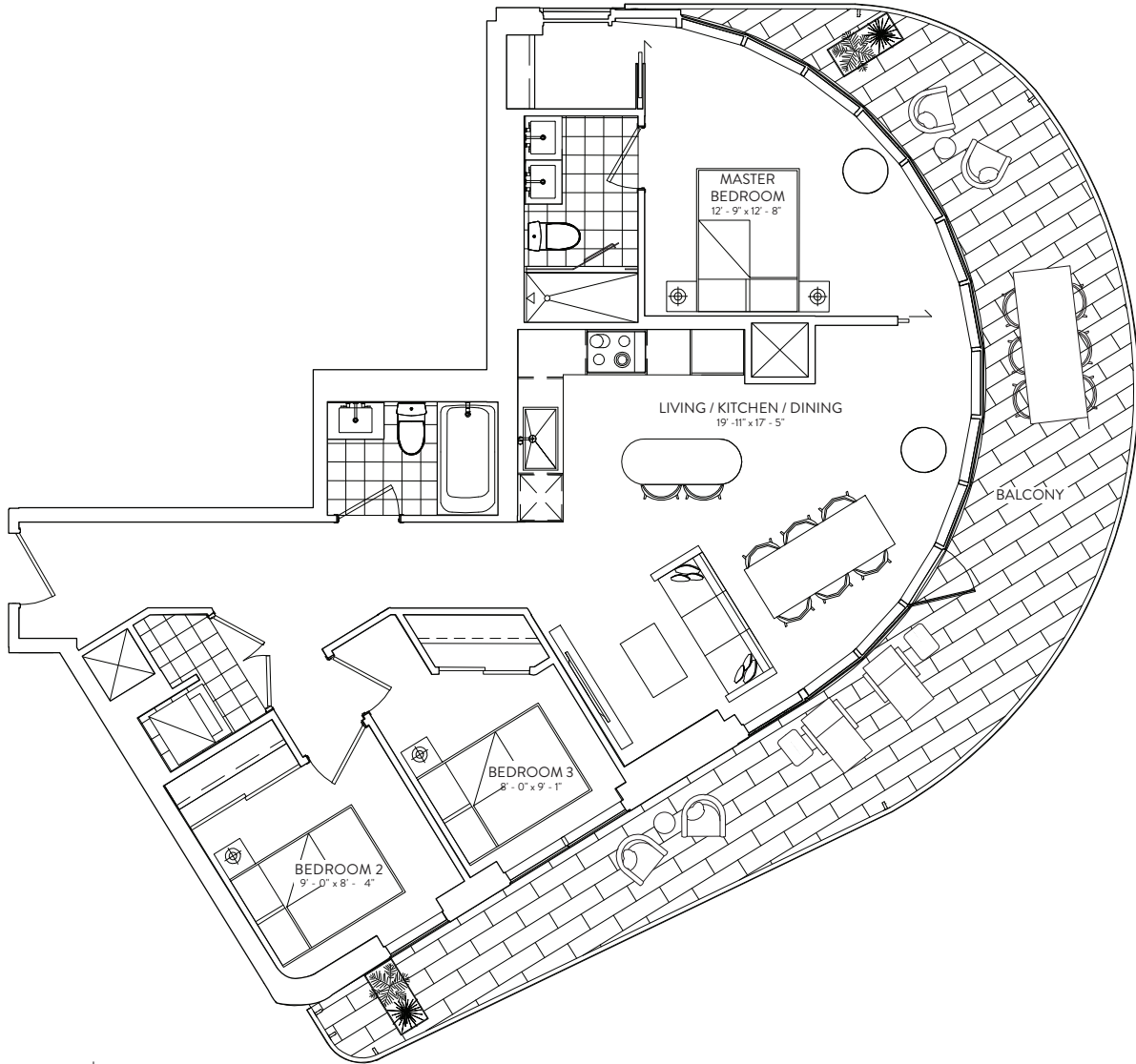
ELADCANADA

# 3B 994

3 BEDROOM | 2 BATHROOM

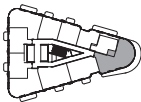
INTERIOR: 994 SF | EXTERIOR: 360 SF

GALLERIA 

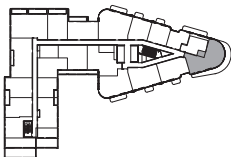


FLOOR 11 | EXTERIOR: 385 SF

FLOORS 11-27



FLOORS 9-10



This plan is not to scale and is subject to architectural review and revision. The number of units per Floor and the number of floors may be reduced or increased at the vendor's sole discretion without notice. The purchaser acknowledges that the actual unit purchased may be a reverse layout to the plan shown. All materials, specifications, details and dimensions, if any, are approximate and subject to change without notice in order to comply with building site conditions and municipal, structural, vendor and/or architectural requirements. Actual living areas may vary from floor area stated. Floor areas have been measured and may vary in accordance with Bulletin #22 published by the Tarion Warranty Corporation. Bulkheads are not shown on this plan and may be located in areas of the Unit as required to provide venting and mechanical systems. Balconies, Terraces and Patios, if any, are exclusive use common elements shown for display purposes only and location and size are subject to change without notice. Window location, size and type may vary without notice. The length, width and directional position of the flooring are for illustration purposes only and may vary without notice. E.&O.E.

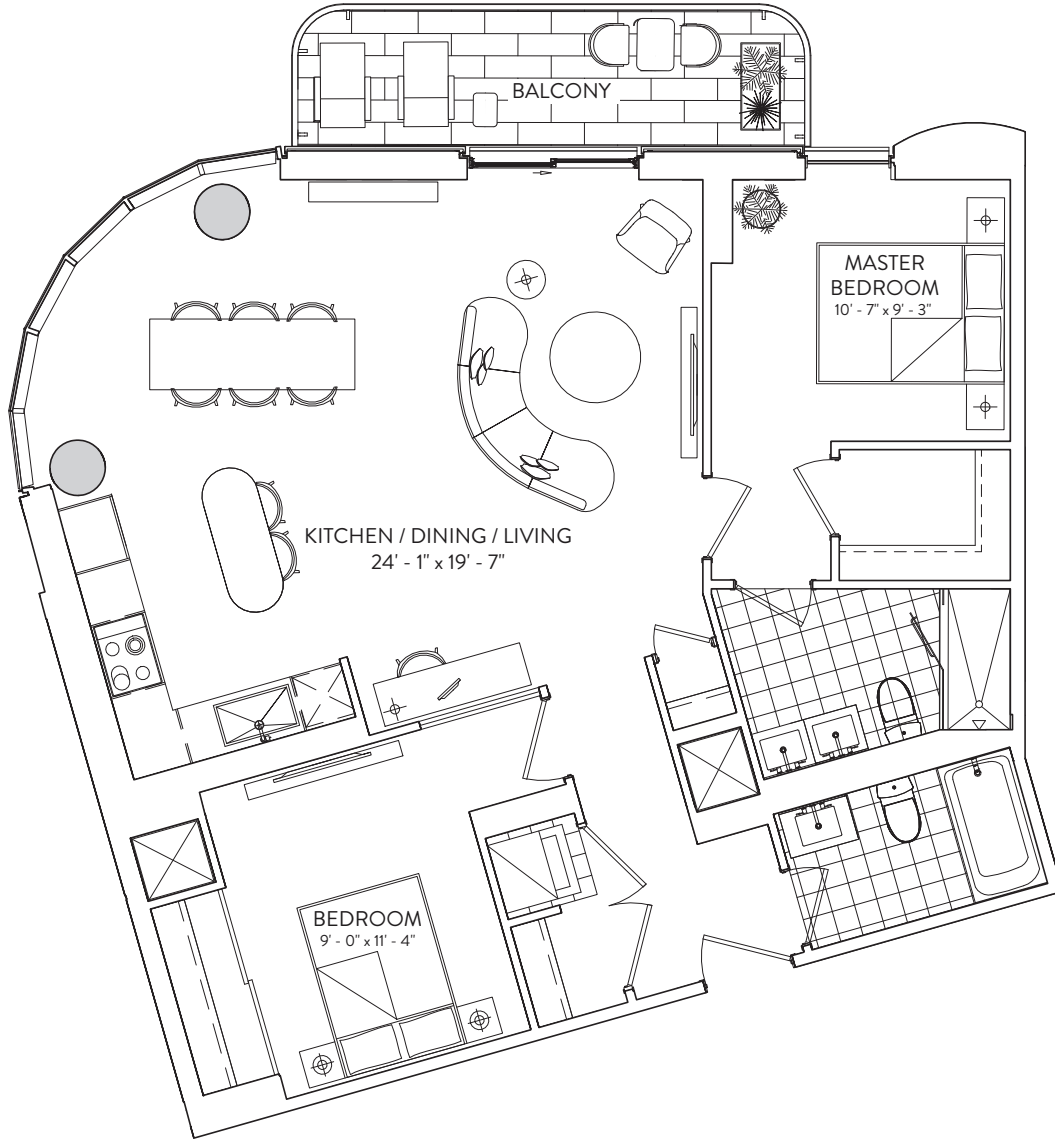
ELADCANADA

# 2B 1046

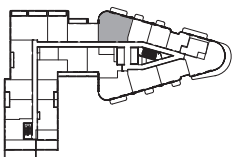
2 BEDROOM | 2 BATHROOM

INTERIOR: 1046 SF | EXTERIOR: 85 SF

GALLERIA 



FLOORS 9-10



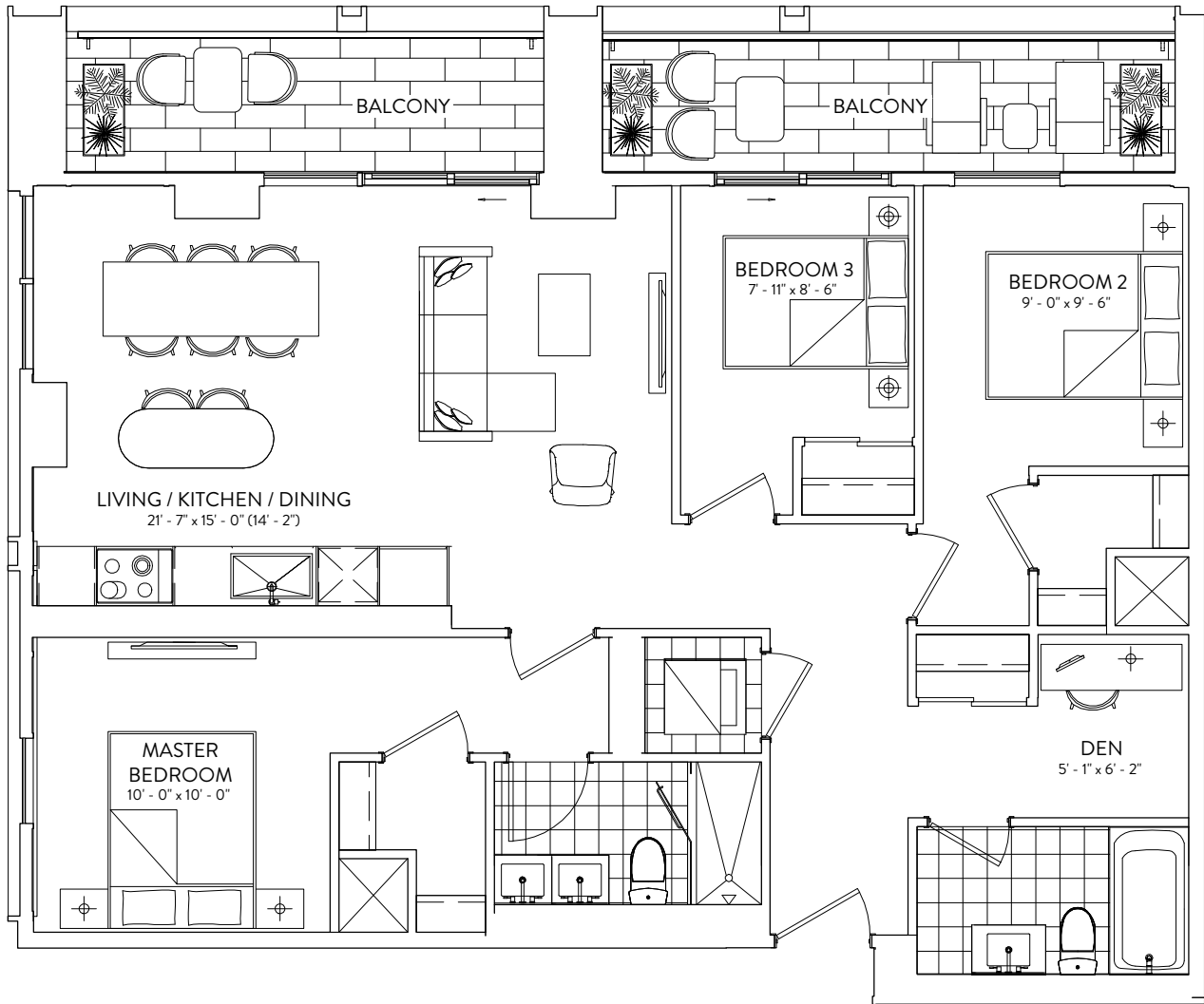
This plan is not to scale and is subject to architectural review and revision. The number of units per Floor and the number of floors may be reduced or increased at the vendor's sole discretion without notice. The purchaser acknowledges that the actual unit purchased may be a reverse layout to the plan shown. All materials, specifications, details and dimensions, if any, are approximate and subject to change without notice in order to comply with building site conditions and municipal, structural, vendor and/or architectural requirements. Actual living areas may vary from floor area stated. Floor areas have been measured and may vary in accordance with Bulletin #22 published by the Tarion Warranty Corporation. Bulkheads are not shown on this plan and may be located in areas of the Unit as required to provide venting and mechanical systems. Balconies, Terraces and Patios, if any, are exclusive use common elements shown for display purposes only and location and size are subject to change without notice. Window location, size and type may vary without notice. The length, width and directional position of the flooring are for illustration purposes only and may vary without notice. E.&O.E.

ELADCANADA

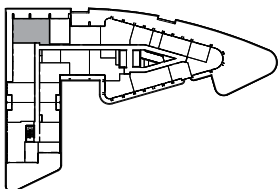
# 3B+D 1110

3 BEDROOM + DEN | 2 BATHROOM  
INTERIOR: 1110 SF | EXTERIOR: 158 SF

GALLERIA



FLOORS 9-10



This plan is not to scale and is subject to architectural review and revision. The number of units per Floor and the number of floors may be reduced or increased at the vendor's sole discretion without notice. The purchaser acknowledges that the actual unit purchased may be a reverse layout to the plan shown. All materials, specifications, details and dimensions, if any, are approximate and subject to change without notice in order to comply with building site conditions and municipal, structural, vendor and/or architectural requirements. Actual living areas may vary from floor area stated. Floor areas have been measured and may vary in accordance with Bulletin #22 published by the Tarion Warranty Corporation. Bulkheads are not shown on this plan and may be located in areas of the Unit as required to provide venting and mechanical systems. Balconies, Terraces and Patios, if any, are exclusive use common elements shown for display purposes only and location and size are subject to change without notice. Window location, size and type may vary without notice. The length, width and directional position of the flooring are for illustration purposes only and may vary without notice. E.&O.E.

ELADCANADA