

# Natasha

THE RESIDENCES



WELCOME TO NATASHA  
THE RESIDENCES, ENJOY  
A BEAUTIFULLY CURATED  
LIFESTYLE IN THE HEART  
OF THE ENTERTAINMENT  
DISTRICT, NEATLY TUCKED INTO  
ADELAIDE AND JOHN. STYLISH,  
SOPHISTICATED, TAILORED  
DESIGN FOR DISCERNING  
TASTEMAKERS. INSPIRED BY THE  
CITY'S ULTIMATE BON VIVANT.

# T U R N L I F E   **ON**

WITH A FINGER ON THE  
PULSE OF THE CITY  
AND A SAVOIR FAIRE  
FOR WHAT'S IN STYLE,  
NATASHA DOESN'T  
FOLLOW TRENDS, SHE  
DEFINES THEM. NATASHA  
THE RESIDENCES SETS  
THE STAGE FOR A SUPER-  
CHARGED, SUPER-  
CONNECTED LIFESTYLE.

BROUGHT TO LIFE  
THROUGH VISIONARY  
ARCHITECTURE FROM  
BDP QUADRANGLE,  
THE EXTRAORDINARY  
AESTHETIC OF STUDIO  
MUNGE, AND THE  
ARTISTIC PRESENCE  
OF PROLIFIC NEO-POP  
ARTIST, PETER TUNNEY.





IN THE EARLY 20TH CENTURY  
A NEW ERA OF DESIGN WAS  
SWEEPING ACROSS THE  
CONTINENT, A PERIOD DEFINED  
BY MAJESTIC SKYSCRAPERS,  
MODERNIST NEW MATERIALS,  
AND UNPRECEDENTED HUMAN  
WELLBEING. TODAY, THAT  
MACHINE AGE AESTHETIC IS  
REINTERPRETED FOR THE  
MODERN AGE AT NATASHA  
THE RESIDENCES.

EQUAL PARTS  
SOPHISTICATION,  
POWER, AND  
MYSTERIOUS  
**ALLURE**

IMAGINE A BUILDING THAT SEEMS TO SHAPESHIFT BEFORE YOUR VERY EYES - IN SOME PLACES CURVED AND GENTLY TAPERED, IN OTHERS, BOLD AND STRONG. GROUNDED IN HISTORY, A GLEAMING NEW TOWER SITS ATOP A STATELY HERITAGE STRUCTURE. FOLDED METAL PANELS

ACCESSORIZE THE FAÇADE, CREATING SLENDER BANDS REMINISCENT OF A VINTAGE ROLEX WATCHBAND THAT INVITES A DYNAMIC PLAY OF SHADOW AND LIGHT. THE COLOUR IS RICH, COMPLEX, AND INDEFINABLE, AT TIMES APPEARING COPPER,

BEFORE EVOLVING INTO A DEEP, DARK BRONZE. THE TRANSITION BETWEEN BASE AND TOWER CAPTURES A SENSE OF ENERGY AND BALANCE, AND ECHOES AT THE APEX WHERE THE SHIMMERING BANDS GENTLY TAPER AS THEY MEET THE SKY.



HERITAGE PODIUM

“

NATASHA IS NOT SIMPLY A DESIGN; IT DEFINES A NEW STYLE - A BALANCE OF STRONG AND SOFT, MASCULINE AND FEMININE, PAST, PRESENT, AND FUTURE. A NEW AGE IN URBAN LIVING.

”



NATASHA'S SECRET TO  
HAPPINESS? LOVE WHAT  
YOU DO, WHERE YOU  
SPEND YOUR TIME, AND  
WHO YOU SPEND IT WITH.

# INTEGRATE YOUR LIFE

IT'S THE ETHOS SHE  
FOLLOWS IN HER OWN  
HOME, CREATING A  
SPACE IMBUED WITH  
INSPIRING ARTWORK,  
SOOTHING SETTINGS,  
AND REMINDERS FROM  
JOURNEYS, NEAR AND  
FAR. IT'S ALSO AN  
ETHOS THAT'S EASY TO

FOLLOW AT NATASHA  
THE RESIDENCES,  
WHERE A VARIETY OF  
THOUGHTFUL AMENITIES,  
DESIGNED FOR EVERY  
PART OF YOUR LIFE,  
COME TOGETHER UNDER  
ONE ROOF FOR FULLY  
INTEGRATED LIVING.





# SIXTH FLOOR AMENITIES

TURNING THE STANDARD RULES ON THEIR HEAD, THE GROUND FLOOR LOBBY IS A SIMPLE DISCREET ENTRYWAY THAT WHISKS YOU UP TO THE SIXTH FLOOR SKY LOBBY AND CONCIERGE. STRUTTING THROUGH REEDED GLASS DOORS, OVER DARK HERRINGBONE HARDWOOD FLOORS FRAMED WITH MARBLE BORDERS, GUESTS WILL GUSH OVER THE LAVISH SPACE CURATED WITH CULTURE AND MYSTERY.







BESPOKE WALLPAPER BY PETER TUNNEY ADORNS THE FOYER WITH GRAPHIC ARTISTRY, WHILE A TALL ABSTRACT SCULPTURE BY KELLY WEARSTLER LEADS THE EYE TO THE LUSH TERRACE BEYOND. CONTEMPORARY CROWN MOULDINGS AND RIBBED TABOUR PANELLING DETAILS ARE SOFTLY LIT BY THE SOOTHING COVE LIGHTING, BRINGING WARMTH AND SOPHISTICATION TO THE TIMELESS SPACE.





ARTWORK BY PETER TUNNEY

PIANO LOUNGE

BEYOND THE SKY LOBBY, THE AMENITIES EXPAND AND MULTIPLY. A COLLECTION OF TASTEFULLY-FURNISHED LOUNGES SET THE STAGE FOR PRIVATE SCREENINGS AND INTIMATE DIALOGUES. IN THE PIANO LOUNGE, A CURVED SLATTED SCREEN BEAUTIFULLY FRAMES THE SPACE WHERE A SELF-PLAYING, PETER TUNNEY-DESIGNED PIANO CHARMS PASSERSBY. THE GLOSSY BLACK SURFACE IS ACCENTED WITH RED LACQUERED DETAIL AND A REMINDER THAT GRATITUDE IS THE KEY TO LIVING LIFE TO THE FULLEST, WITH JUST A LITTLE BIT OF "ATTITUDE".





PRIVATE DINING ROOM



PRIVATE DINING ROOM

FROM AL FRESCO PIZZA PARTIES TO THE MOST FESTIVE OF DINNER SOIRÉES, YOU'LL FIND A SPACE PERFECTLY SUITED TO EVERY OCCASION. A GRAND PRIVATE DINING ROOM CONNECTS TO AN INDOOR/OUTDOOR KITCHEN FEATURING AN INTEGRATED PIZZA OVEN AND U-SHAPED BAR. ON THE OTHER SIDE OF THE INNOVATIVE RETRACTABLE WALL, A WRAP-AROUND TERRACE OFFERS AN OUTDOOR URBAN OASIS FOR ALL AGES.



INDOOR/OUTDOOR KITCHEN WITH PIZZA OVEN



TERRACE

PICNIC AREAS AND A CHILDREN'S IMAGINATION ZONE ENCOURAGE OUTDOOR PLAY. UNDER A DRAMATIC CIRCULAR PERGOLA, A ROARING FIRE PIT BRINGS PEOPLE TOGETHER WHILE, IN NEIGHBOURING INTIMATE LOUNGES, WHISPERS AND LAUGHTER ARE CARRIED BY THE WIND THROUGH WELL-MANICURED HEDGES AND LUSHLY LANDSCAPED PLANTERS. RELAXED, YET SOPHISTICATED, THIS IS THE BACKDROP FOR THE ULTIMATE URBAN LIFESTYLE.







# FIFTH FLOOR AMENITIES

ON THE FIFTH FLOOR, BOASTING AN ALL-BLACK PALETTE OF TEXTURALLY CONTRASTING BRICK, METAL, AND RUBBER, AN ELITE INDUSTRIAL-INSPIRED GYM WILL SEDUCE FITNESS ENTHUSIASTS WITH STATE-OF-THE-ART CARDIO AND WEIGHT TRAINING EQUIPMENT LIT BY GRAPHIC TUBULAR FIXTURES.





ARTWORK BY PETER TUNNEY

FITNESS CENTRE WITH PERSONAL TRAINING PODS

THREE INDIVIDUAL WORKOUT PODS OFFER PRIVACY FOR PERSONAL TRAINING SESSIONS AND CONNECT YOU TO VIRTUAL CLASSES WITH THE VERY BEST TRAINERS AROUND THE WORLD. THE MOTIVATIONAL REMINDER TO "OWN THE DAY" SPANS THE ROOM TO ENERGIZE THE SPACE FURTHER.

Write it on  
your heart that  
every day is the  
best day in the  
year. He is rich  
who owns the  
day, and no one  
owns the day  
who allows

*If to be invaded  
with fret and  
anxiety, finish  
every day and  
be done with it.  
You have done  
what you could.  
Some blunders  
and absurdities*

**DAY**



INFRARED SAUNA

FOR CORE TRAINING, DEEP STRETCHING, AND MUSCLE RELAXATION, AN INFRARED SAUNA AND YOGA STUDIO PROVIDES A CALMING YIN TO THE DYNAMIC YANG.



INFRARED SAUNA



PET SPA



SOCIAL MEDIA STUDIO WITH GREEN SCREEN

“

AN INDOOR GROOMING SALON AND PET PROMENADE ALLOW EVERY FURRY FAMILY MEMBER TO BEAUTIFY AND STRUT IN STYLE.

”

ELSEWHERE ON THE FIFTH FLOOR, A SOCIAL MEDIA STUDIO COMPLETE WITH GREEN SCREEN AND KITCHENETTE, PROVIDES THE PERFECT SPACE FOR INFLUENCERS, ARTISTS, MUSICIANS, FOODIES, FASHIONISTAS, AND TIKTOKERS ALIKE TO PRODUCE THEIR EVERYDAY CONTENT FROM THE COMFORT OF HOME. AND OUR FOUR-LEGGED FRIENDS HAVEN'T BEEN FORGOTTEN - THEY WILL BE WELL TAKEN CARE OF IN THE PET SPA AND PROMENADE.



# SEVENTH FLOOR AMENITIES

YOU DON'T REACH THE TOP WITHOUT HARD WORK, THAT'S WHY, WITH FOUR SEMI-PRIVATE WORKSTATIONS, A MEETING ROOM, A PARTY ROOM AND READING LOUNGES, THE SEVENTH FLOOR IS DEDICATED TO NETWORKING AND CO-WORKING. THERE'S ALSO A DESIGN-CENTRIC LAUNDRY LOUNGE TO TURN YOUR USUAL SOLO LAUNDRY NIGHT INTO A SOCIAL EVENT TO MIX, MINGLE AND GET TIDY. THIS SPOT MIXES OLD SCHOOL FUN AND A SENSE OF COMMUNITY WITH PLAYFUL SHAPES AND VENDING MACHINES THAT DISPENSE UNEXPECTED DELIGHTS.



LAUNDRY LOUNGE

WHO KNEW THAT DOING YOUR LAUNDRY COULD BE A SOCIAL EVENT? FOR LARGER LOADS, OR FOR WHEN YOU FEEL LIKE SOME SMALL TALK WHILE SEPARATING YOUR COLOURS FROM YOUR WHITES, HEAD TO THE COMMUNAL LAUNDRY ROOM FOR SOME GOOD CLEAN FUN.

*Think before you do  
or plan b you go*



# AMENITY PLANS

## 5<sup>TH</sup> FLOOR

1. FITNESS CENTRE
2. PERSONAL TRAINING PODS
3. INFRARED YOGA STUDIO
4. INFRARED SAUNA
5. WASHROOMS AND CHANGE ROOMS
6. PET SPA
7. PET WALK
8. SOCIAL MEDIA STUDIO
9. MANAGEMENT OFFICE



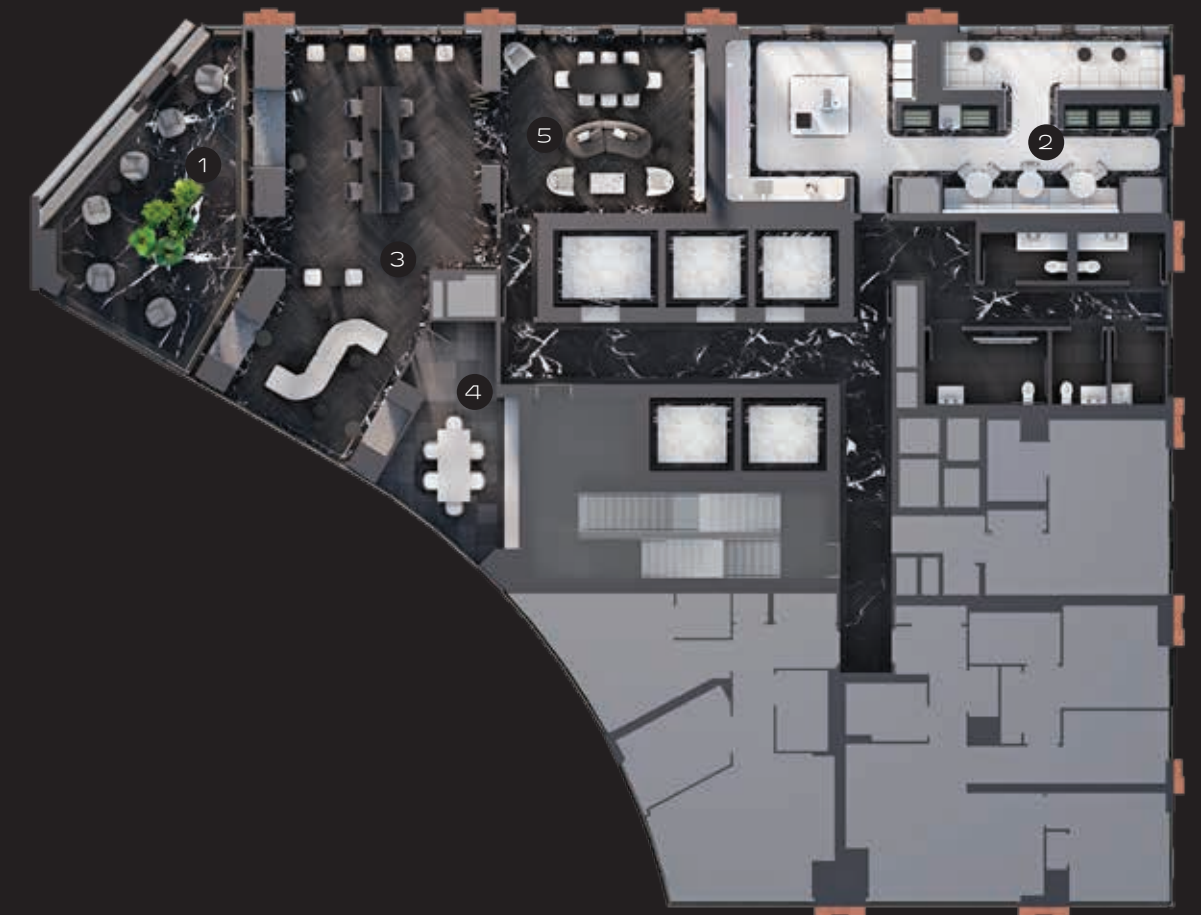
## 6<sup>TH</sup> FLOOR

1. SKY LOBBY
2. ELEVATORS
3. LOBBY LOUNGE
4. PIANO LOUNGE
5. PRIVATE DINING ROOM
6. INDOOR PIZZA/  
OUTDOOR KITCHEN  
LOUNGE
7. PRIVATE OUTDOOR  
GARDEN
8. OUTDOOR LOUNGING  
TERRACE
9. OUTDOOR BBQ  
LOUNGE
10. INTERACTIVE  
CHILDREN PLAY AREA
11. PARCEL ROOM



## 7<sup>TH</sup> FLOOR

1. OUTDOOR TERRACE
2. LAUNDRY LOUNGE
3. WI-FI WORK-SPACE  
LOUNGE
4. PRIVATE MEETING  
ROOM
5. LOUNGE





DISCOVER A WORLD WHERE LUXURY BECOMES REALITY, WHERE BLACK AND WHITE COMPLETE EACH OTHER LIKE THE PERFECT LEATHER JACKET OVER A LITTLE BLACK DRESS. CONFIDENT, SLEEK, AND SEXY, THE INTERIORS OF NATASHA THE RESIDENCES DELIVER AN EXPERT MIX OF SENSUOUS MATERIALS AND BOLD DESIGN.

# NEVER BE BORING

RANGING FROM BRILLIANTLY-DISTRIBUTED STUDIOS TO EXPANSIVE 3-BEDROOM SUITES, EACH UNIT IS DESIGNED TO OFFER A CALM RETREAT FROM THE DAILY HUSTLE. PICTURE-PERFECT KITCHENS CELEBRATE GREAT TASTE AND A PASSION FOR GOURMET CUISINE WITH MODERN CABINETRY THAT CONCEALS INTEGRATED APPLIANCES AND

KEEPS SPACES PHOTO-READY. SPA-INSPIRED BATHROOMS MELT AWAY ANY TENSION. SPACIOUS LIVING ROOMS WITH FLOOR-TO-CEILING WINDOWS ALWAYS HAVE THE PERFECT LIGHT. A CHOICE OF DESIGNER, PRE-SELECTED UPGRADES MAKE IT SIMPLE TO ELEVATE YOUR LIVING EXPERIENCE TO NEW HEIGHTS.



# FEATURES & FINISHES

## BUILDING FEATURES

- STREET LEVEL ENTRY
- SKY LOBBY [SIXTH FLOOR]
- PARKING ELEVATOR
- PARCEL ROOM
- DISTRICT COOLING AND HEATING
- INDIVIDUAL BICYCLE STORAGE

## 5<sup>TH</sup> FLOOR

- FULLY EQUIPPED FITNESS CENTRE WITH PERSONAL TRAINING PODS
- INFRARED YOGA STUDIO
- INFRARED SAUNA WITH OUTDOOR LOUNGE DAY BED AREA
- WASHROOMS AND CHANGE ROOMS
- LUXURIOUS PET SPA
- PET WALK
- SOCIAL MEDIA STUDIO WITH GREEN SCREEN
- MANAGEMENT OFFICE

## 6<sup>TH</sup> FLOOR

- SKY LOBBY WITH 24 HOUR CONCIERGE
- THREE HIGH SPEED ELEVATORS
- LOBBY LOUNGE
- PIANO LOUNGE
- PRIVATE DINING ROOM
- INDOOR / OUTDOOR KITCHEN LOUNGE WITH GAS PIZZA OVEN
- PRIVATE OUTDOOR GARDEN WITH GAZEBO AND GAS FIREPLACE
- OUTDOOR SWING CHAIR LOUNGING TERRACE
- OUTDOOR BBQ LOUNGE
- INTERACTIVE CHILDREN PLAY AREA

## 7<sup>TH</sup> FLOOR

- OUTDOOR TERRACE
- LAUNDRY LOUNGE
- WI-FI WORK-SPACE LOUNGE
- PRIVATE MEETING ROOM

## SUITE FINISHES

- APPROXIMATELY 9' CEILINGS \*\*\*\*\*
- EXTERIOR GLASS SLIDING DOORS\*\*\*
- SOLID CORE ENTRY DOOR WITH HARDWARE AND SECURITY VIEWER
- INDIVIDUALLY 4 PIPE FAN COILS
- LAMINATE FLOORING THROUGHOUT
- MIRROR SLIDERS ON CLOSET DOORS\*\*\*
- IN-SUITE SMOKE DETECTOR
- IN-SUITE CARBON MONOXIDE DETECTOR
- LAUNDRY WITH WHITE STACKED WASHER / DRYER VENTED TO EXTERIOR
- CERAMIC FLOORING IN LAUNDRY AREA
- INTERIOR WALLS PAINTED WHITE QUALITY LATEX\*

## KITCHEN

- LAMINATE FLOORING\*
- BLACK STAINLESS STEEL BUILT-IN CONVECTION SPEED OVEN WITH MICROWAVE FUNCTION AND BLACK ELECTRIC GLASS COOKTOP
- STAINLESS STEEL HOOD FAN
- INTEGRATED BOTTOM-FREEZER REFRIGERATOR AND DISHWASHER
- SELECTION OF DESIGNER SERIES KITCHEN CABINETRY\* \*\*\*\*\*
- POT LIGHTS
- UNDER CABINET INTEGRATED LIGHTING
- GRANITE OR CORIAN COUNTERTOP AND BACKSPLASH\*
- STAINLESS STEEL SINK WITH SINGLE LEVER FAUCET AND PULL-OUT VEGETABLE SPRAY\*\*\*

## GENERAL:

### MAIN BATHROOM

- PORCELAIN FLOORING\* \*\*\*
- INTEGRATED CULTURED STONE COUNTERTOP
- SAFETY PRESSURE-BALANCING VALVE IN TUB\*\*
- 5' SOAKER TUB OR SHOWER WITH GLASS PANEL WITH CHROME FAUCETS\*\*\*
- DESIGNER SELECTED PLUMBING FIXTURES AND CABINETRY\*\*
- PORCELAIN WALL TILE IN TUB OR SHOWER AREA \*\*\*
- EXTERIOR VENTED EXHAUST FAN
- ENTRY PRIVACY LOCK

### BATHROOM

- PORCELAIN FLOORING \* \*\*\*\*
- INTEGRATED CULTURED STONE COUNTERTOP
- SAFETY PRESSURE-BALANCING VALVE IN TUB\*\*
- 5' SOAKER TUB OR SHOWER WITH GLASS PANEL WITH CHROME FAUCETS\*\*\*
- DESIGNER SELECTED PLUMBING FIXTURES AND CABINETRY\*\*
- PORCELAIN WALL TILE IN TUB OR SHOWER AREA \*\*\*
- EXTERIOR VENTED EXHAUST FAN
- ENTRY PRIVACY LOCK

## ELECTRICAL FEATURES

- ROUGH IN CEILING LIGHT OUTLETS IN DINING ROOM
- ROUGH IN CEILING LIGHT OUTLETS IN BEDROOM
- LIGHTING FIXTURES IN BATHROOMS\*\*
- LIGHTING FIXTURE IN HALLWAY
- CABLE TELEVISION OUTLETS IN DEN, LIVING ROOM AND MAIN BEDROOM\*\*
- TELEPHONE OUTLETS IN LIVING ROOM AND MAIN BEDROOM\*\*
- SERVICE PANEL WITH CIRCUIT BREAKER
- USB RECEPTACLE

## SECURITY FEATURES

- 24-HOUR CONCIERGE
- 24-HOUR SECURITY CAMERAS IN SELECT GARAGE/PARKING AREAS
- CLOSED CIRCUIT CAMERA MONITORING AT SELECT BUILDING ENTRY POINTS
- ELECTRONIC COMMUNICATION SYSTEM IN LOBBY VESTIBULE PERMITS VISITORS TO COMMUNICATE WITH SUITE FROM BUILDING ENTRANCES

## ENERGY EFFICIENCY FEATURES

- ENERGY STAR APPLIANCES
- DUAL FLUSH TOILETS
- ENERGY EFFICIENT LIGHT BULBS
- WATER CONSERVING FAUCETS
- INDIVIDUALLY METERED HYDRO AND WATER

PLEASE SEE PROVISIONS IN SCHEDULE A RELATING TO PURCHASER'S RIGHTS TO SELECT FINISHES AND VENDOR'S RIGHTS TO INSTALL SUBSTITUTE MATERIALS AND FINISHES \*

COLOURS AND/OR MATERIALS TO BE SELECTED FROM VENDOR'S STANDARD SAMPLE PACKAGES, AS PROVIDED FOR BELOW. VENDOR SHALL NOT BE RESPONSIBLE FOR SHADE DIFFERENCES OCCURRING FROM DIFFERENT DYE LOTS.

\*\* IF APPLICABLE  
\*\*\* AS PER PLAN  
\*\*\*\* EXCEPT BATHROOMS, LAUNDRY, BULKHEADS AND DROP CEILINGS FOR MECHANICAL SYSTEMS, AS REQUIRED \*\*\*\*\*

FLOORS 7, 27, AND 46 APPROXIMATE CEILING HEIGHT OF 10'; FLOOR 47 APPROXIMATE CEILING HEIGHT OF 10'6" \*\*\*\*\*  
KITCHEN TYPES VARY AND IS AS PER PLAN.

(1) THE VENDOR SHALL HAVE THE RIGHT TO MAKE ALTERATIONS TO THE SELECTION AND SPECIFICATIONS RELATING TO ENERGY EFFICIENT FEATURES.  
DATED: SEPTEMBER 1, 2021

WITH A PRIME POSITION IN THE  
HEART OF THE ENTERTAINMENT  
DISTRICT, THERE'S ALWAYS  
SOMETHING ON.

# TAKE LIFE TO THE LIMITS

EXCITING AND  
EXHILARATING, THIS  
IS A NEIGHBOURHOOD  
WHERE ENTERTAINMENT  
TAKES ON EVERY  
FORM - FROM SPORTS  
TO ARTS, FILM, MUSIC,  
LIVE THEATRE, COMEDY,  
GOURMET DINING,  
DESIGNER SHOPPING  
AND MORE. CULTURE  
MEETS COOL AND  
STYLE RADIATES FROM  
EVERY BLOCK.



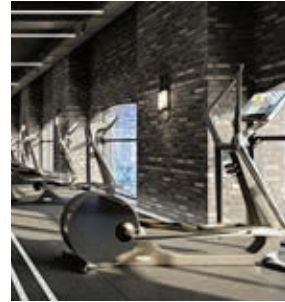
INSPIRED BY ONE OF THE CITY'S  
BIGGEST MOVERS AND SHAKERS,  
NATASHA THE RESIDENCES PUTS YOU  
RIGHT IN THE HEART OF THE ACTION.  
STEP OUTSIDE AMID AN AMAZING  
LINEUP OF BARS, RESTAURANTS,  
COFFEE SHOPS, BUSINESSES,  
AND BOUTIQUES.





## 6AM

COFFEE AND CUDDLES WITH MY DOG - A MORNING RITUAL I CAN'T LIVE WITHOUT.



## 7AM

A GREAT WORKOUT IS NEXT ON THE AGENDA. AT THE RESIDENCES I WOULD DEFINITELY TAKE ADVANTAGE OF THE PERSONAL WORKOUT PODS IN THE INDUSTRIAL-STYLE GYM - THE ABILITY TO BE IN TORONTO AND STILL TAKE A CLASS, ON-DEMAND, WITH SOME OF MY FAVOURITE TRAINERS FROM AROUND THE WORLD? SIGN ME UP!

## CANTEEN

## 9AM

ARRIVE AT THE NKPR OFFICES ON ADELAIDE. STOP IN AT O&B CANTEEN FOR A COFFEE ON ICE EN ROUTE.

## 10AM

MEETINGS BEGIN. THE NKPR TEAM ARE THE HARDEST WORKING AND SMARTEST PROS IN THE INDUSTRY AND WE'RE CONSTANTLY JUGGLING A MULTITUDE OF HIGH-PROFILE PROJECTS, EVENTS, AND CLIENTS LIKE FLOW, SWAROVSKI AND ELLIE MAE.



## 1PM

LUNCH AT FIGO WHERE I'M PROBABLY ORDERING THE ZUCCHINI FRITTI WITH EXTRA HONEY. IT'S ABSOLUTELY INCREDIBLE.

## SHOPNK

## 4PM

I'M CONSTANTLY ON THE LOOKOUT FOR NEW COLLABORATIONS FOR SHOPNK, OUR SOCIALLY-CONSCIOUS, CURATED E-COMMERCE FASHION, BEAUTY AND ENTERTAINMENT SITE THAT FEATURES ALL MY FAVOURITE BRANDS. WITH A PORTION OF PROCEEDS GOING TO A LOCAL CHARITY OF YOUR CHOICE.

## 6PM

AS AN INTROVERT, I ALWAYS NEED A LITTLE TIME FOR MYSELF. ONE OF THE STUNNING INDOOR AND OUTDOOR LOUNGES AT THE RESIDENCES WOULD BE THE PERFECT SPOT.



## 7PM

I LOVE TO ENTERTAIN - EVERYTHING FROM SUPER FORMAL DINNER PARTIES TO IMPROMPTU PIZZA NIGHTS. I CAN PICTURE THE POSSIBILITIES IN THE PRIVATE DINING SPACES AT THE RESIDENCES. THE GRAND DINING ROOM IS DESIGNED TO IMPRESS, WHILE THE INDOOR/ OUTDOOR KITCHEN WITH A PIZZA OVEN IS WHERE WE COULD PUT OUR PIZZAIOLO SKILLS TO THE TEST.



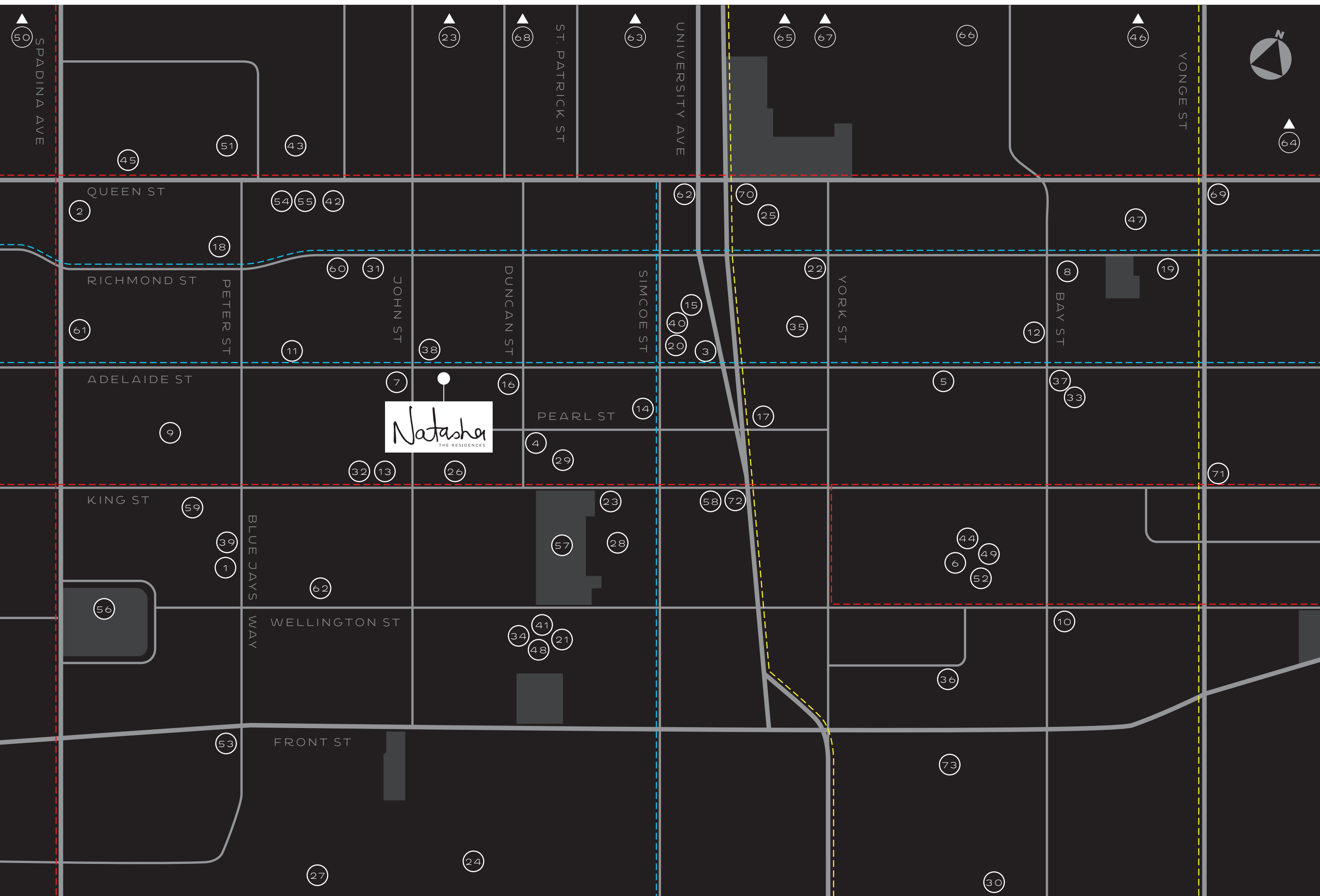
## 10PM

IN PR, THERE'S NO SUCH THING AS "BUSINESS HOURS" SO AT 10 O'CLOCK I MIGHT BE TAKING A CALL, RESPONDING TO EMAILS, OR - MOST LIKELY - AT AN EVENT. BUT NO MATTER WHAT THE EVENING BRINGS, IT'S ALWAYS AMAZING TO COME HOME, ESPECIALLY WHEN HOME IS A SPACE THAT WELCOMES AND INSPIRES YOU.

# 24 HOURS WITH NATASHA







**FOOD & DINING**

1. AKIRA BACK
2. ALO
3. BOSK
4. BYBLOS DOWNTOWN
5. CACTUS CLUB CAFE
6. CANOE
7. FIGO TORONTO
8. HY'S STEAKHOUSE & COCKTAIL BAR
9. KHAO SAN ROAD
10. KI MODERN JAPANESE + BAR
11. KIIN
12. LOCALE MERCATTO
13. LUMA
14. MICHAEL'S ON SIMCOE
15. MOMOFUKU NOODLE BAR
16. PAI
17. PIZZERIA LIBRETTO - UNIVERSITY
18. RICARDA'S RESTAURANT
19. RICHMOND STATION
20. SOHO HOUSE
21. TOCA
22. VOLOS

**SHOPPING**

42. ARC'TERYX
43. ARITZIA
44. BITTER SWEET JEWELLERY
45. BLUBOHO
46. CF TORONTO EATON CENTRE
47. HUDSON'S BAY
48. JDDJ JEWELLERY LTD
49. JOHNSTON & MURPHY
50. KENSINGTON MARKET
51. MEC TORONTO
52. NUTRITION HOUSE
53. RABBA FINE FOODS
54. TIMBUK2
55. TITIKA ACTIVE COUTURE

**RECREATION & FITNESS**

56. CLARENCE SQUARE
57. DAVID PECAUT SQUARE
58. F45 TRAINING TORONTO DOWNTOWN
59. FIT FACTORY FITNESS
60. GOODLIFE FITNESS
61. SPINCO
62. YOUR HOUSE FITNESS

**ENTERTAINMENT & LEISURE**


23. ART GALLERY OF ONTARIO
24. CN TOWER
25. FOUR SEASONS CENTRE FOR THE PERFORMING ARTS
26. PRINCESS OF WALES THEATRE
27. ROGERS CENTRE
28. ROY THOMSON HALL
29. ROYAL ALEXANDRA THEATRE
30. SCOTIABANK ARENA
31. SCOTIABANK THEATRE
32. TIFF BELL LIGHTBOX

**SCHOOLS & SERVICES**


63. MOUNT SINAI HOSPITAL
64. RYERSON UNIVERSITY
65. SICKKIDS
66. TORONTO CITY HALL
67. TORONTO GENERAL HOSPITAL
68. UNIVERSITY OF TORONTO - ST. GEORGE CAMPUS

**BARS & LOUNGES**


33. ASTOR LOUNGE
34. DEQ TERRACE AND LOUNGE
35. DRAKE ONE FIFTY
36. LIBRARY BAR
37. LOUIX LOUIS
38. MELROSE ON ADELAIDE
39. MISTER C.
40. SHANGRI-LA LOBBY LOUNGE AND BAR
41. THE RITZ-CARLTON

100 

WALK SCORE

100 

TRANSIT SCORE

100 

BIKE SCORE

SUBWAY LINE 

STREETCAR ROUTE 

CYCLING ROUTE 



“

WALK ALONG KING AND QUEEN WEST, STOPPING IN FOR THE OCCASIONAL CORTADO BEFORE HITTING THE NEXT SHOP.

”

CATCH A NEW CINEMATIC MASTERPIECE AT THE TIFF BELL LIGHTBOX, AND SEE THE STARS DESCEND ON YOUR NEIGHBOURHOOD COME FESTIVAL TIME. HEAD TO THE ROGERS CENTRE TO CHEER ON THE HOME TEAM OR HARBOURFRONT FOR A DAY ON THE LAKE. FROM THE FASHION DISTRICT TO THE FINANCIAL DISTRICT, EVERYTHING IS CLOSE AT HAND.





# A DYNAMIC, URBAN VISION

LAN TERRA'S MISSION IS TO CREATE LANDMARK URBAN CONDOMINIUM COMMUNITIES CHARACTERIZED BY OUTSTANDING LOCATION, ICONIC ARCHITECTURE AND DESIGN, INSPIRED AMENITIES AND INNOVATIVE TECHNOLOGIES - ALL AT AN UNMATCHED VALUE.

LAN TERRA DEVELOPMENTS WAS FOUNDED BY MARK MANDELBAUM AND BARRY FENTON, TWO REAL ESTATE VISIONARIES WHO BEGAN WITH A DREAM TO DEVELOP INNOVATIVE, ONE-OF-A-KIND DOWNTOWN CONDOMINIUM PROPERTIES. OVER 20 YEARS, WE HAVE

CHARTED AN AMAZING SUCCESS STORY ON THE TORONTO SKYLINE WITH ONE ICONIC CONDOMINIUM AFTER ANOTHER, SCALING NEW HEIGHTS IN DESIGN, STYLE AND ELEGANT URBAN LIVING. OUR GUIDING PHILOSOPHY GOES BEYOND JUST CONDOMINIUM BUILDING TO DYNAMIC URBAN REVITALIZATION AND PUTTING TORONTO ON THE GLOBAL MAP AS THE NEW CITY OF THE FUTURE, WITH VIBRANT MASTER PLANNED MIXED USE COMMUNITIES, SUSTAINABLE GREEN LIVING AND CUTTING-EDGE ENVIRONMENTAL TECHNOLOGIES.

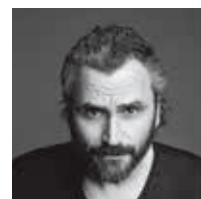


## BDP. Quadrangle



BDP QUADRANGLE CAN BE SUMMED UP IN TWO WORDS: INSPIRATION REALIZED. FOR NEARLY 35 YEARS THIS FULL-SERVICE ARCHITECTURE FIRM HAS BEEN SHAPING THE CITY SKYLINE WITH AWARD-WINNING PROJECTS THAT INCLUDE COMMERCIAL, MIXED-USE, MULTI-UNIT RESIDENTIAL, CONTENT MEDIA, AND RETAIL MARKETS. THEY DESIGN SPACES WHERE PEOPLE LIVE, WORK, AND PLAY, WHERE BEAUTY AND BUSINESS GO HAND IN HAND, AND WHERE CREATIVE DESIGN AND SUSTAINABILITY ARE INSEPARABLE. USING LIGHT, SPACE, MATERIALS, AND MOVEMENT, THE FIRM HELPS REDEFINE THE HUMAN EXPERIENCE. NOW, IN PARTNERSHIP WITH GLOBAL ARCHITECTURE, DESIGN, AND ENGINEERING FIRM BDP QUADRANGLE EXTENDS ITS INTERNATIONAL REACH, JOINING A NETWORK OF 1,300 PROFESSIONALS COLLABORATING ACROSS STUDIOS IN THE UK, CHINA, INDIA, IRELAND, THE MIDDLE EAST, THE NETHERLANDS, AND SINGAPORE.

## STUDIO MUNGE



WITH BEAUTY AND CRAFTSMANSHIP IN HIS DNA, IT SEEMS PREDESTINED THAT ITALIAN DESIGNER ALESSANDRO MUNGE WOULD GROW UP TO BECOME ONE OF NORTH AMERICA'S MOST SOUGHT-AFTER CREATIVE TALENTS FOR INTERIOR DESIGN. DRIVEN BY AN INQUISITIVE NATURE AND A DESIRE TO PROVOKE PROFOUND EMOTION THROUGH THREE-DIMENSIONAL ENVIRONMENTS, ALESSANDRO HAS RESHAPED THE PRECONCEIVED NOTIONS OF INTERIOR DESIGN FOR OVER 20 YEARS. HIS INNOVATIVE POINT OF VIEW EARNED HIM CONTRACT MAGAZINE'S DESIGNER OF THE YEAR AWARD, AND HAS STRENGTHENED HIS TIES TO SOME OF THE WORLD'S MOST ICONIC HOSPITALITY BRANDS AND LUXURY CLIENTS. HIS MULTIDISCIPLINARY FIRM, STUDIO MUNGE, IS RECOGNIZED ACROSS THE GLOBE FOR MASTERFUL STORYTELLING THROUGH DESIGN, IMBUING EVERY PROJECT WITH PURPOSE AND BEAUTY IN EQUAL MEASURE.

## NAK ■ design strategies



THOUGH BASED IN TORONTO, NAK DESIGN STRATEGIES' UNIQUE LANDSCAPE ARCHITECTURE CAN BE SEEN AROUND THE WORLD WITH PROJECTS ACROSS CANADA AND IN CHINA, THAILAND, THE US, AND THE CARIBBEAN. THE FIRM USES A DESIGN PROCESS THAT EXPERTLY MARRIES THE UNIQUE CHARACTERISTICS OF A SITE WITH A DEEP UNDERSTANDING OF ITS PROGRAMME REQUIREMENTS, A PHILOSOPHY THAT HAS RESULTED IN SPECTACULAR AND AWARD-WINNING PROJECTS LIKE THE GARDINER MUSEUM OF CERAMIC ARTS, BELL LIGHTBOX AND FESTIVAL TOWER, THE CHEDDINGTON, AND ONE POST ROAD.





LAN<sup>T</sup>TERRA  
DEVELOPMENTS