



*an*  
UNNCO

MMON

CIELO

300 BLOOR STREET WEST

LUX

URY

SOUTH WEST VIEW



Renderings are artist's concept E.C.O.E.

## AN UNEXPECTED BEAUTY

**A**t Cielo Residences, luxury defies expectation. Located in the Annex, Toronto's celebrated Arts & Cultural hub, this statement of refined architectural modernism, poised above a 19th century landmark, redefines Toronto's skyline. Live just steps to designer boutiques on Mink Mile, across from the world-class University of Toronto, and next to the city's finest restaurants. With the Bloor subway at your doorstep, you're mere minutes from almost anywhere in the GTA. Discover breathtaking views above tree-lined Victorian streets. Welcome to an uncommon luxury.

Designed by the renowned architectural firm KPMB, Cielo seamlessly incorporates one of Toronto's most significant neo-Gothic structures, the revered Bloor Street United Church (BSUC), into a sleek and stylish residential tower. The iconic architecture artfully blends the historic and the contemporary, creating the "refined modernist" aesthetic that has cemented KPMB's reputation for design excellence across the globe.

Cielo's architecture alone would make it a tour de force, but factor in a sublimely enviable location on Bloor Street West, with views of Toronto's stunning skyline and charming vistas of a bucolic village, and it's clear why Cielo is one of most coveted residential addresses in Toronto.



Renderings are artist's concept E.&O.E.

SOUTH VIEW



---

## A RARE BLOOR STREET ADDRESS

---

**L**ong before Rosedale or Forest Hill, the historic Annex neighbourhood was the city's most "tony" residential precinct and right now it's enjoying a spectacular renaissance. With a location that stakes a claim to that long-standing legacy, Cielo is profoundly connected to everything that makes Canada's largest metropolis so vibrant and exciting.

Cielo sits at the nexus of the city's Yonge/University and Bloor/Danforth subway lines, connecting residents to the city and beyond. Add to this easy access to the dedicated high-speed Spadina streetcar line that terminates at Union Station, the hub for both GO Transit and Via Rail and, well, the whole country is within reach. Is it any wonder that Cielo scores a "hat trick" in accessibility with a Transit Score of 98, a Walk Score of 95 and a Bike Score of 100?

Cielo's Walk Score seems a certainty considering all the stunning attractions just a stroll away. The Mink Mile, one of the world's most exclusive shopping streets, is just a short walk east on Bloor, as is its equally luxe neighbour, Yorkville. In the other direction, you'll find the ever-groovy, charming Bloor Street West retail strip, with one-of-a-kind emporiums and some of Toronto's newest eateries.



## SCINTILLATING SKYLINES

Cielo overlooks a classic North American scene - the beautiful campus of the University of Toronto, full of vibrant lawns and romantic college buildings, reminiscent of Cambridge and Oxford. Beyond this academic vista are the glittering towers of Toronto's downtown skyline, and beyond that, a view of Ontario's sparkling great lake. Is there a more glamorous big city panorama on the continent? Not from our perspective.



SOUTH VIEW

---

## AN ENDLESS HORIZON

---

### THE ANNEX AT A GLANCE

The northern views from Cielo are equally entrancing, albeit dramatically different. In the company of few select Toronto neighbourhoods - Rosedale, Forest Hill, the Bridle Path - the Annex has long been viewed as a preferred enclave of upper crust families. Consequently, the district is full of beautifully preserved Victorian and Edwardian mansions, as well as street after street of charming heritage homes dating from the same era. That priceless architectural inventory gives the area its unique charm. Blink and you'd think you were in Chelsea or Knightsbridge. Annex residents faithfully guard this singular sensibility, so the chances of it ever losing its genteel village vibe are remote indeed. North-facing Cielo residents will forever enjoy a unique urban tableau: a Victorian/Edwardian village nestled under a vast canopy of mature trees. In a word - riveting.



NORTH VIEW



Renderings are artist's concept. E.O.E.

SOUTH WEST VIEW

**A**t KPMB, the renowned architectural practice that designed Cielo, there's a saying that acts as the firm's unofficial mantra: "Every building implies a city." For Marianne McKenna, the firm partner heading the Cielo design team, that translates into one overweening imperative: Every truly well executed new building should fit seamlessly into its urban context. "First and foremost, we're city builders and, quite simply, you're trying to make the whole city look better by virtue of what you do."

The immediate context Cielo needed to fit into, of course, was first the specific site on the grounds of the historic Bloor Street United Church, and then into the larger Annex neighbourhood. "I was initially attracted to this project because of the church," explains McKenna, "it gave it purpose and it gave prospective Cielo residents access to a wider community, which is very exciting."

Marianne McKenna and her firm KPMB have a hugely successful track record of integrating historic old structures into new architectural complexes with a singular purpose: to complement and enhance each other's role. Among her recent projects was the restoration and renovation of the historic Royal Conservatory of Music campus with the addition of a breathtakingly beautiful new glass and brick performance venue, Koerner Hall, all just a few blocks down Bloor from Cielo. The project has received a rapturous reception from architectural critics around the world, and rave reviews from concertgoers.

"Our firm has always had a great respect for the past," McKenna explains, "and I think the word 'respect' is the key here. You're taking the past and bringing it into the future." That respect is evident everywhere in the Cielo design. "This project wouldn't have been of much interest to me if it was just about 'façadism,'" says McKenna. "Keeping the church intact was central to the whole scheme and fundamentally shaped the new building's design."

## STRIKING DESIGN

**K**PMB worked with Canada's foremost heritage architects, ERA Architects Inc., on re-imagining BSUC. "They were responsible for restoring the external envelope of the church, we were responsible for reconfiguring its interior," explains McKenna. The interior reconfigurations included reducing the size of the sanctuary from 900 to 400 seats, lowering the floor, jettisoning pews, and creating a flexible swing-shaped parterre that allows the space to transform easily from a Christian church to a Jewish shul, serving the two faith communities that share the space.

Likely the single biggest architectural "intervention" was the church's new entrance on Bloor. In the mid-1920s, when the city decided to widen the street, the front portal moved to the building's west side, and the lower half of the front façade was covered in heavy stone masonry. The new scheme intends to reopen the church to the street with portals, accented with a stunning bronze and glass screen, that open into a new narthex and to the sanctuary beyond. "Removing the opaque stone masonry from the front of the church and flooding the entrance with light communicates to the public a simple message," says architect Andrew Dyke, McKenna's partner on the project. "This is a welcoming diverse place. Welcome, come in."



BSUC will change in other ways. To accommodate Cielo's residential tower the old Annex wing of the church will be replaced by a transparent four-storey glass pavilion housing both church offices and leasable space whose rental income will support BSUC's mission for the future. The pavilion will be accessed through a sky-lit glass L-shaped promenade connecting Bloor to Huron Street, where an eastern stone feature wall will be the church itself. "It provides a strong base for the residential tower rising above it by establishing a strong public realm around the project's exterior as well as the ability to walk through it," explains McKenna. Adds ERA's Andrew Pruss, "To me what's really exciting about this development is that it allows this extraordinary old church to continue to operate."



pinwheel window treatment reflects the texture of the church's heritage stonework at the base of the building. "We tried to reprise that in the tower in a very modern contemporary way," says Andrew Dyke. There's also the intimate architectural relationship between the two buildings, and how the tower dramatically cantilevers over the church as it rises; it's one of the most striking gestures of the design.

When choosing Cielo's distinctive colour palette, the architects had a tricky context decision to make: would they reference the red brick of the Annex, as exemplified by Pidgeon House at the project's northern edge, or BSUC's red sandstone, a material used in 19th century institutional buildings around Toronto? They opted for the sandstone. "The colour we've chosen for the metal panels on the tower is actually a distinctive hue that artfully merges browns, purples, pinks and reds," says McKenna. Whatever this kaleidoscopic amalgam is called, it's gorgeous. And it will undoubtedly glow.

Many modifiers help capture the distinctive modernism that is an indelible trademark of KPMB's work - stylish, sophisticated, refined, aesthetically pitch-perfect - and nowhere is their sleek design vocabulary more clearly on display and better expressed than in Cielo's stunning residential tower. This new building will only further gild the firm's reputation as architects of global excellence. McKenna and Dyke define Cielo's signature look in similar ways. For McKenna, it's a "vertical elegance," a design gesture that references the old church's two spires. For Dyke, it's a verticality achieved by splitting the classic point tower glass box in two pieces that pinwheel around each other on all four sides of the building.

"Fundamentally the building has two 'vertical strategies,'" says McKenna, "one is a grid of punched windows sheathed in bronze metal and the other is a screen with a window wall behind. Dyke has very cleverly shaped the tower in the way these two distinct façades meet each other in a very city-like manner." Unquestionably, it's this pas de deux between these two striking vertical gestures that gives the building its distinctive visual identity, but there are other elements at play. The "articulation" of the tower's unique

"For us, the key thing is that it fits," she adds. "It's a KPMB hallmark that 'it fits.' Even if a new building is of a different scale and of a different time, we're firmly committed that it should complement the older buildings around it. We're committed to making our neighbours feel good." With the striking plans for Cielo, the neighbours will no doubt be overjoyed. The gorgeous cloud-scraping tower will breathe new life into one of the city's historic landmark structures, enhancing one of its most beloved neighbourhoods.





Renderings are artist's concept E.&O.E.

NORTH VIEW



NIMBUS MAXXI, 2018  
PHOTO: ALBERTO BRAVINI



NIMBUS GREEN ROOM, 2013  
PHOTO: RJ MUNA



NIMBUS VISUAL, 2013  
PHOTO: MICHAEL HOLLY

**C**ielo translates as “sky and heaven” in English from both Italian and Spanish, and nothing visually captures the essence of the “sky” in the popular imagination as much as angel-adorned clouds, a material object also totally ephemeral in nature: literally here one moment, gone the next. That sense of transience, of an “impermanent state of being,” has obsessed the world-renowned Dutch artist Berndnaut Smilde ever since he first created, then photographed, his first cloud installation, Nimbus, inside a small sixteenth-century chapel in Hoorn, Holland, back in 2012.

Smilde has since reprised such hyper-realistic miniature cloud installations in factories, museums, castles and dungeons around the world, to much critical acclaim. The original photo of Nimbus now resides at London’s famous Saatchi Gallery. The global celebrity of Smilde’s clouds grew even greater when international fashion magazine Harper’s Bazaar published photographs of four of the world’s most famous designers - Karl Lagerfeld, Alber Elbaz, Donatella Versace, Dolce & Gabbana - up-close-and-personal with Smilde’s eerily beautiful clouds in a piece, appropriately titled, ICONOCLOUDS.

---

## BERNDNAUT SMILDE

---

### The Artist

Smilde was initially inspired by the ubiquitous presence of cumulus clouds (also known as thunder clouds) in classical Dutch paintings, a reflection of the rainy landscape. But he upended his artistic ancestors by “capturing” these natural phenomenon within interior spaces. Smilde creates the cloud by saturating the air within the space with a fine mist of water and then introducing a puff of smoke. The water condenses onto the smoke particles just like the droplets of a natural cloud form around tiny ‘condensation nuclei’ in the atmosphere.

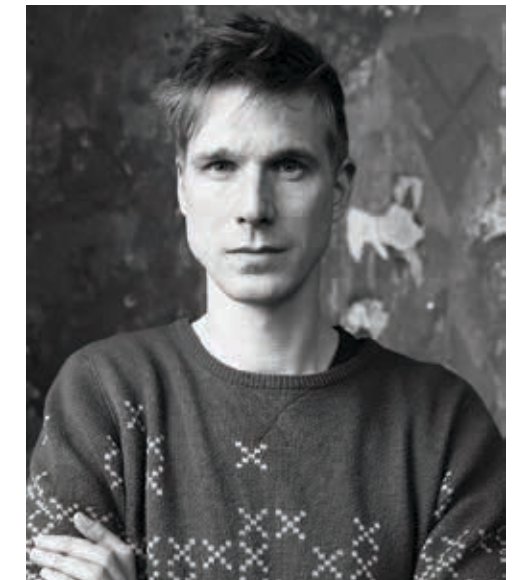


PHOTO: GIULIETTA VERDON-ROE

The clouds lasts a few seconds, just long enough to be photographed, thereby making the momentary everlasting, almost celestial. When asked about his “intention” in creating these stunning images, Smilde is quizzical. “You could read it as an element out of the Dutch landscape paintings in a physical form in a classical museum hall.” Whatever his intention, his “heavenly” nimbus images have transfixed gallery goers around the world.



## AN UNCOMMON LUXURY

**C**reating and cultivating a real sense of community is central to the vision at Cielo and that feeling of genuine neighbourliness will be facilitated by the building's extraordinarily beautiful common spaces as well as its unparalleled amenities.

Upon arrival at Cielo, residents and guests will enter a stunning Lobby and adjoining Library space. With vaulted ceilings creating a sense of spaciousness and awe, a magnificent marble reception desk, a gleaming light installation, and warm blonde woods, Cielo's Lobby is designed to make the act of "coming home" a special occasion, signaling a return to a safe harbour.

The ground floor Lobby and Library serve two functions: a place to meet friends, family and neighbours outside the home but also a place to spend time alone, collect your thoughts, read a book, savour a glass of wine, or simply relax, outside your suite.

Cielo's ground floor common spaces are designed to make lounging, lingering, or waiting, both relaxing and visually engaging. To accomplish this goal, the Library has two distinct sections: one, with a large settee facing an oversized fireplace, private, secluded and serene. The other, more social, with large windows looking onto the quaint Huron Street on one side, and a wall of floor-to-ceiling bookshelves bursting with inspiring reads and objets d'art on the other. Both are exquisite living spaces that extend your vision of home.

## GROUND FLOOR

1. North Garden
2. Pidgeon House
3. Entrance to Automated Parking System
4. Pathway to Bloor Street
5. Ramp
6. McClure Hall
7. Lounge
8. Washroom
9. Huron Street Terrace
10. Mail Room
11. Lobby
12. Moving Room
13. Parcel Room
14. Elevators
15. Residential Entrance
16. Bloor Street Entrance



## PIDGEON HOUSE GARDEN

The renovated and restored Pidgeon House (constructed in 1890 and named after beloved BSUC minister, George C. Pidgeon) acts as an architectural transition between Cielo's high-rise tower and the low-rise residential streetscape along Huron, so fittingly, its front garden replicates the front lawns of the Annex. Tucked in behind, the Pidgeon House Garden provides an off-leash area where Cielo residents and neighbourhood locals can play with their pets.

## HURON STREET TERRACE

The Huron Street Terrace marks the transition between Cielo and the surrounding neighbourhood. An architecturally designed planter-wall provides seating and a sense of intimacy for the landscaped space accessible from the ground floor Library. The terrace brings together passing pedestrians and Cielo residents, offering a place to stop and relax against a peaceful backdrop.



Overlooking bustling Bloor Street West, the 6th floor amenity spaces are designed to get the heart rate pumping, the taste buds salivating and your social skills flexing. With the Cielo Fitness & Cardio Centre, Cielo Weight Room, Cielo Media Lounge and the Cielo Skyline Terrace, the 6th floor is centre stage for the Cielo community. It's the place where friendships will be forged, and goals - fitness, personal and social - honed.



## 6TH FLOOR

1. Private Outdoor Repose Area
2. Cielo Weight Room
3. Gourmet Kitchen
4. Cielo Media Lounge
5. Cielo Skyline Terrace
6. Cielo Fitness & Cardio Centre
7. Private Yoga Studio
8. Property Management Office



Renderings are artist's concept E.&O.E.

CIELO FITNESS & CARDIO CENTRE

## CIELO MEDIA LOUNGE

If there's a signature vista that perfectly captures what is unique about Cielo, it's the Cielo Media Lounge's up-close-and-personal views over Bloor Street West. With expansive windows overlooking the city skyline, the Lounge is sun-drenched during the day and simply enchanting at night. It's a space that's supremely multi-functional thanks to a sleek flat-screen television and comfortable lounge seating, perfect for residents keen to watch the Leafs, the Raptors or a classic film. But media isn't the room's only mode. With its Gourmet Kitchen, elegant dining area and mesmerizing double-sided fireplace, the Cielo Media Lounge is the perfect place to entertain.



## CIELO FITNESS & CARDIO CENTRE / CIELO WEIGHT ROOM

With floor-to-ceiling windows overlooking Bloor Street, Cielo health and fitness enthusiasts can enjoy the street action while they get their heart rate up or assume the classic lotus position in the private Yoga Studio. Resistance training is also on the books in the Cielo Weight Room. The fully equipped fitness spaces are clad in the same warm wood used in Cielo's other amenity spaces, creating a feeling of peace and tranquility. The Cielo Weight Room opens onto an outdoor area of repose, perfect for catching your breath or cooling down.



Renderings are artist's concept E.&O.E.



Renderings are artist's concept E.&O.E.

STRATUS PRIVATE DINING ROOM

---

## 8TH FLOOR AMENITIES

---

### STRATUS PRIVATE DINING ROOM

The Stratus Private Dining Room is not only a convenient spot for hosting dinner parties, large and small, it's also a space designed to impress. The elegant setting overlooks an expansive landscaped terrace that acts as an inviting venue for pre-dinner cocktails in the warm evening air. The gourmet kitchen is fully equipped with state-of-the-art appliances and a "capsule" designed island, inspiring master chefs to show off their culinary skills.

### EXECUTIVE BUSINESS CENTRE

For the residents who want to feel inspired in their workspace and value their privacy the Executive Business Centre is a truly indispensable amenity. Well-equipped with high-speed Wi-Fi and the latest technology, and with separate workspaces to ensure privacy, experience the luxury of having your own exclusive office, just a few floors from home.

### STRATUS TERRACE

Cielo's largest outdoor amenity space is the Stratus Terrace, overlooking the Annex from eight floors up. With two fully outfitted, state-of-the-art outdoor kitchens, complete with the latest technology in bbq equipment, dinners can be enjoyed under the pergola. The eighth floor has been designed as the ultimate urban "backyard," the place to host al fresco dinner parties for friends and family, or cocktail parties for occasions big and small. It is Cielo's most programmed, most active space but it also features the same material design palette that exudes the sense of tranquility so characteristic of Cielo's repose areas, including earthy Ipe dark wood decking and white limestone walls. The terrace's perimeter will be planted with fragrant perennials and leafy trees, providing a lush and colourful backdrop.



Renderings are artist's concept E.S.O.E.

STRATUS TERRACE



---

## AN UNPRECEDENTED INSPIRATION

---

**J**anet Rosenberg & Studio (JRS) is one of Canada's leading landscape architectural practices. Their award-winning portfolio of work includes many high-profile public, corporate, and institutional commissions, but at Cielo they've called on their equally extensive expertise in residential landscape design.

The "interplay" between urban and residential, public and private, the cardinal directions, and the perspectives on Huron Street and on Bloor Street inspired the studio's stunning designs for Cielo. The result is landscapes that are crisp, clean, tailored, almost serene, at times exuding both a Zen-like serenity and big-city sophistication, while also being friendly, warm, welcoming, and neighbourly. This "duality" perfectly captures what's unique about both the Annex neighbourhood and Cielo itself, a duality brought to life in all the building's landscaped outdoor spaces.



### THE BLOOR STREET PLAZA

The place where residents and guests can fully immerse themselves in both Cielo's historic and contemporary "faces" is the Bloor Street Plaza. The plaza borders the entrance to the new four-storey glass pavilion with views of Bloor Street. An inviting and comfortable space, the retail patio offers a well-appointed meeting place to enjoy a cup of java, catch up on emails or simply enjoy the city's vibrancy.

**S**ustainable architectural design is environmentally conscious, energy-saving, and utilizes responsive and renewable materials and systems. Collecdev realizes that ecological and environmental concerns have expanded beyond the issue of the consumption of non-renewable energy sources. True sustainability aims for ecological balance, a balance we aim to achieve with the following sustainable features at Cielo.

---

## SUSTAINABLE FEATURES

---

### BUILDING

- All Collecdev buildings are designed and built to conserve more energy and resources than standard code-compliant buildings.
- Committed to achieving Toronto Green Standards (TGS) certification.
- Sustainable green roof areas to reduce the heat island effect and help manage storm water retention on site.
- High-performance thermal envelope to minimize unwanted solar gain and heat loss.
- Bird friendly glazing to reduce danger to migratory birds.
- Exterior condo lighting directed downwards to reduce urban light pollution.
- Motion sensor-controlled lighting in common areas and amenity spaces to reduce electricity costs.
- Light-Emitting Diode (LED) lights use less energy and last much longer than compact fluorescent lighting and halogen bulbs.
- Tri-sorter disposal and recycling system to divert landfill waste.
- Long-term bicycle parking for residents located on P1.
- Short-term bicycle parking for visitors located on ground floor.

### SUITE

- Energy Recovery Ventilators (ERVs) in each suite to reduce energy demands and enhance air quality.
- Programmable thermostat to encourage greater energy conservation.
- Efficient water fixtures and low-flow toilets.
- Energy Star-certified appliances, reducing energy consumption by 30%.
- Low volatile organic compound (VOC) paints used throughout.





Renderings are artist's concept E.P.O.E

STRATUS SIGNATURE KITCHEN

AN EXCEPTIONAL DESIGN

One of the greatest architects of the 20th century, Le Corbusier, famously opined in his 1927 opus *Vers Une Architecture* (Towards An Architecture) that "a house was a machine for living in." His point? That a well-designed home should be kitted out with state-of-the-art technology to make it seamlessly efficient, with all its "mechanical" pieces - energy, lighting, plumbing, heating, air-conditioning - working in lockstep.

All those "under-the-hood" elements should hum like a fine Ferrari or tick like a pristine Piaget watch. But from our perspective, a home is more than a machine, it's also an aesthetic and serene space that should comfort, calm and inspire. It's a backdrop where people live their lives, raise their children, and confront the triumphs and challenges of the everyday. A home is a haven, and it's our hope that Cielo's residences will not only fulfill Le Corbusier's vision for efficiency, but will also provide an aesthetically stunning and truly welcoming lifestyle, the perfect setting to live the good life.



Renderings are artist's concept E.&O.E.



---

## A TOUCH OF LUXURY

---

**T**he bathroom is an essential space that provides one indispensable commodity: solitude. Cielo's bathrooms are inspired spaces designed to relax and unwind in total privacy. Quartz countertops and backsplash reflect the warm light of illuminated mirrored vanities. Pressure balanced rain showerheads offer the same serene feeling of a thermal spa. Lather and refresh to your heart's content in designer spaces that give every day a touch of luxury.



## A DIVINE STATE OF BEING

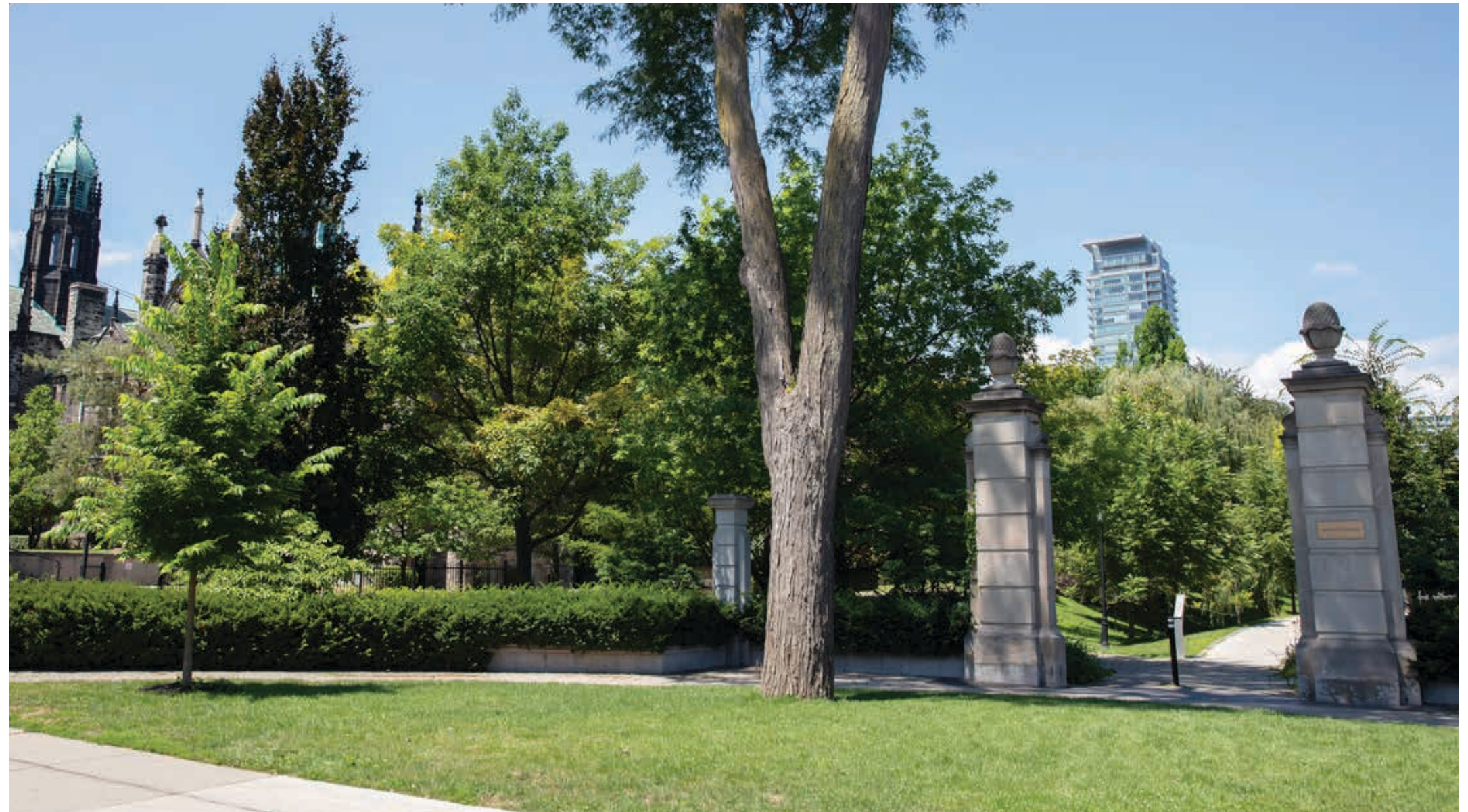
**F**or nearly a century and a half the Annex has been, and continues to be, one of Toronto's most coveted and prestigious neighbourhoods. A sense of gravitas and history permeates the streets thanks to a plethora of stately heritage homes, like the Gooderham estate at the corner of St. George and Bloor. Reputed to be the largest home ever built in the city when it was constructed in 1892, today the majestic structure is home to the exclusive York Club, an excellent example of the caliber of high-brow establishments in the neighbourhood.

Speaking of high-brow, the Annex is probably most closely identified with its immediate neighbour to the south, the University of Toronto, an institution regularly cited in international rankings as the 17th best university in the world and #1 in Canada. This illustrious next-door neighbour makes the Annex a member of an exclusive society of famous neighbourhoods around the world, synonymous with elite universities: Paris's Left Bank with the Sorbonne; London's Bloomsbury with the University of London; Boston's Cambridge with Harvard; New York's Upper West Side with Columbia; and, of course, England's Oxford with the eponymous Oxford University. Because of this distinction of being a University Town, the Annex understandably gained a reputation not only as a home to the rich and powerful, but as a meeting place for intellectual, artistic, academic and cultural heavyweights like Morley Callaghan, Marian Engel, BpNichol, Katherine Govier, John Ralston Saul and endless others.

---

NATURE IN THE HEART OF THE CITY

---



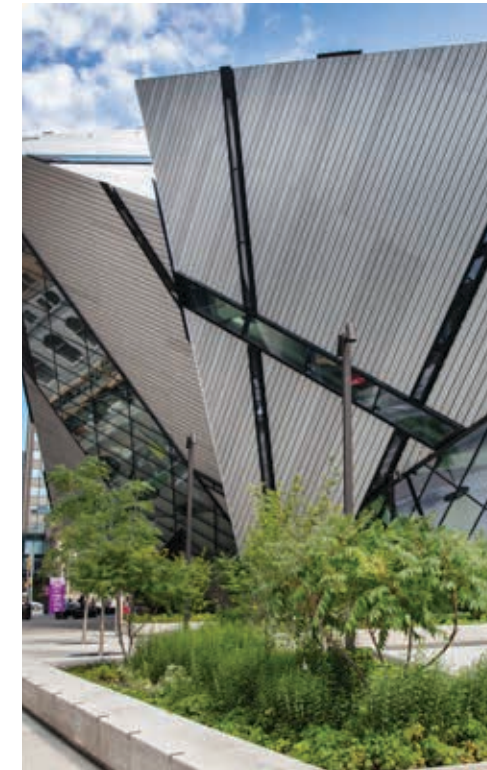
PHILOSOPHER'S WALK

TADDLE CREEK PARK



**A**side from academic excellence, the University of Toronto offers another attractive benefit – an enormous and untouchable green space in the heart of the city. With its numerous grassy quads, playing fields and tree-canopied paths like Philosopher's Walk, the UofT campus acts as an outdoor sanctuary, just steps from home.

A new "green" vision for the campus, appropriately titled "The Landmark Project," is under review, and envisions even greater green space with new pedestrian-friendly streets awash with lush planting and ornamentally paved paths. The expanded natural landscape would complement neighbouring Queen's Park, to date, the largest greenspace in central Toronto. All of this splendour is conveniently close to Cielo, providing a calming respite in the heart of the city.



**P**erhaps because of its close proximity to the university, the neighbourhood also quickly became the home of many of the city's most important arts and cultural institutions and, indeed, the biggest of them, The Royal Ontario Museum, was initially a department at UofT.

Others quickly followed, including the Gardiner Museum, the Bata Shoe Museum (steps from Cielo), the University Art Museum, Loch Gallery, and The Royal Conservatory of Music along with its stunning new performance space, Koerner Hall.

## THE ROYAL CONSERVATORY OF MUSIC & KOERNER HALL

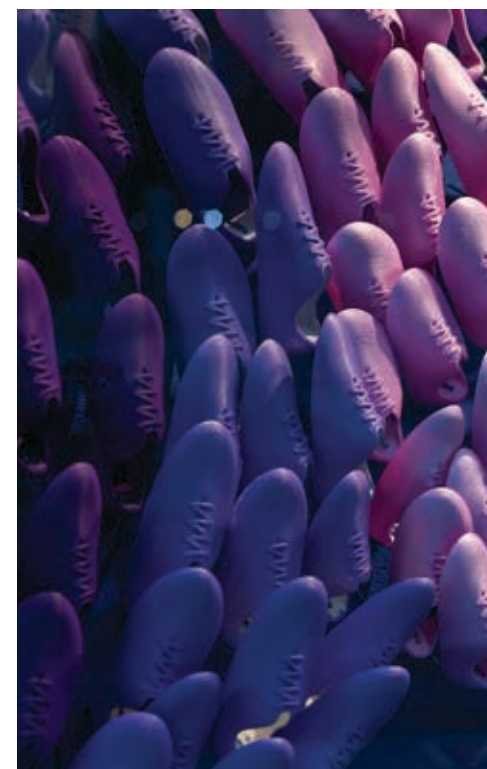
Founded in 1886, the Royal Conservatory of Music was originally known as the Toronto Conservatory, receiving its regal status when King George VI granted it a royal charter in 1947. Unquestionably the leading centre for musical education in Canada, the institute is also home to the country's most exalted performance venue, Koerner Hall. Designed by KPMB (Cielo's lead architect), the venue has received kudos from artists, critics, and concert attendees worldwide for its amazing acoustics and spectacular design.

## ROYAL ONTARIO MUSEUM

The largest and most visited museum in Canada, the Royal Ontario Museum, dominates the cultural landscape of Bloor Street West with its Daniel Libeskind-designed jagged-edge monument to culture at the corner of Bloor Street West and Queen's Park. With over 6 million items in sixty galleries, the ROM is a national treasure, a repository of priceless artifacts from world civilizations going back millennia. For Annex residents, it's a constant source of inspiration, just minutes from the front door.

## GARDINER MUSEUM

Across the street from the ROM sits the Gardiner Museum, one of the largest institutions in the world devoted to the ceramic arts. In 2003 the museum received an extensive renovation designed by KPMB and today, the stacked set of cubes are an architecturally striking presence on Queen's Park. Inside, 14,000 square feet are home to an exquisite collection of earthenware and porcelain, everything from Italian Renaissance majolica, to English delftware.



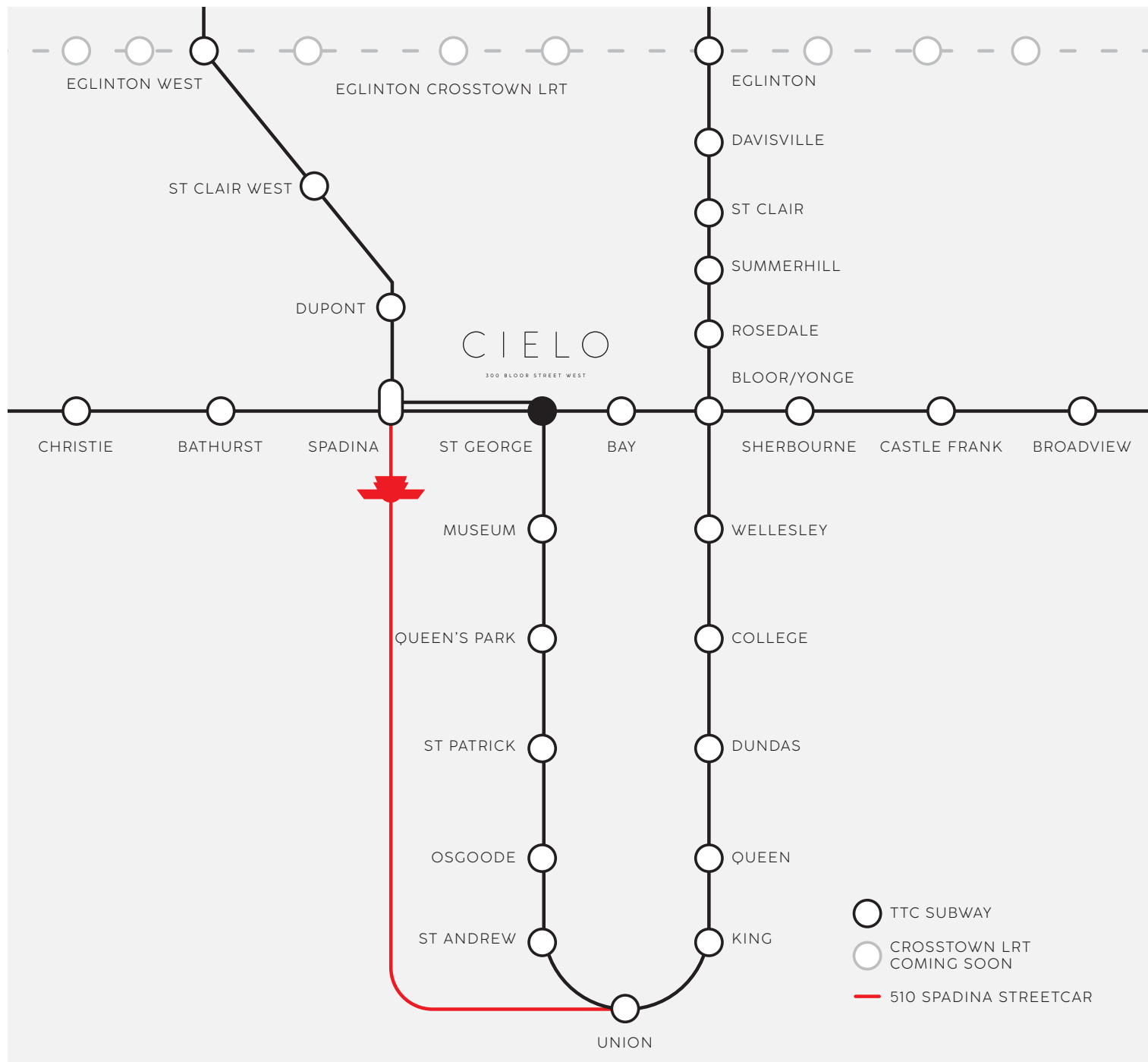
## BATA SHOE MUSEUM

Just across the street from Cielo is arguably the most unique cultural institution in the country, The Bata Shoe Museum. Founded by the late Sonya Bata, the matriarch of the legendary shoemaking dynasty, and designed by the iconic Canadian architect, Raymond Moriyama (in the shape of a shoe box, natch), the museum is the only institution devoted to collecting and exhibiting the most basic of clothing necessities, footwear. With over 13,000 shoes in its collection, spanning 4,500 years of human history, the institution is truly a global authority.





# PROFOUNDLY CONNECTED



## SUBWAY RIDE TIMES

MINUTES FROM  
ST. GEORGE STATION

Yonge and Bloor	3
Christie Pits Park	6
Koreatown	6
Greek Town (Broadview Station)	6
King Street West	9
Union Station/UP Express	9
College Park	10
Casa Loma	11
Rosedale (Rosedale Station)	11
Dundas Square	11
Scotiabank Arena	11
Financial District	11
St Clair	14
Waterfront Toronto	15
Yorkdale Shopping Centre	17
Eglinton LRT	18
York University Keele Campus	33

*Subway times are approximate depending on departure time*



TRANSIT SCORE

98



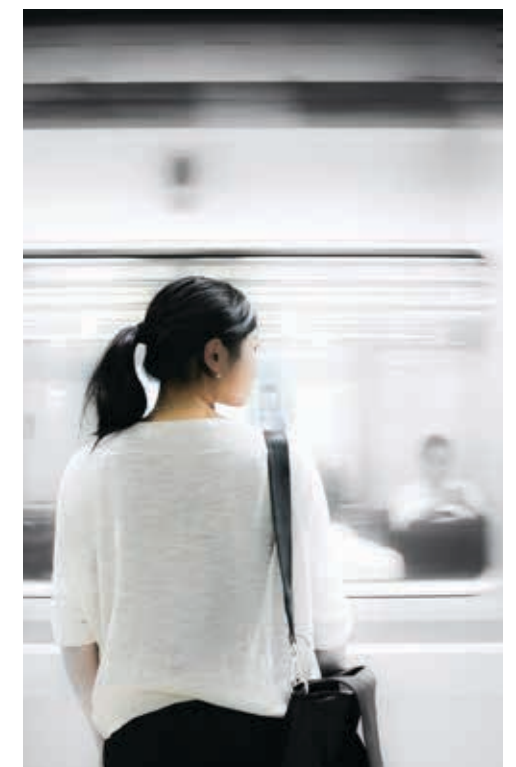
BIKE SCORE

100



WALK SCORE

95





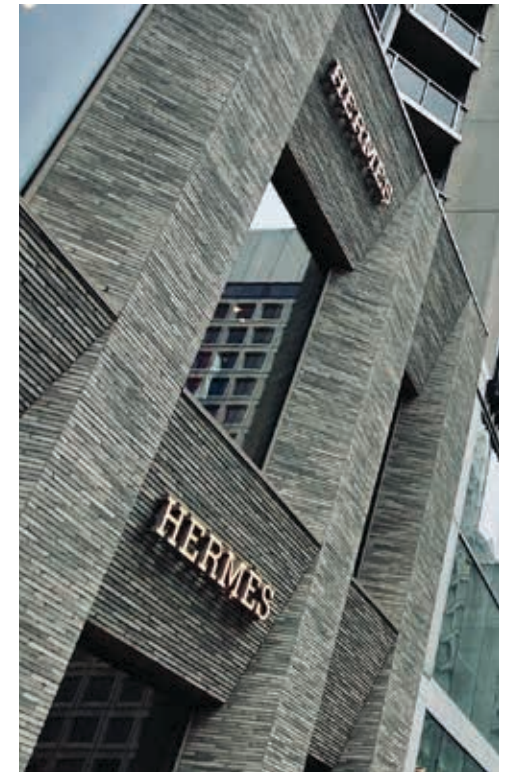
**B**loor Street West is Toronto's pre-eminent east/west artery, but it is also unquestionably one of the city's most renowned streets.

Recently the celebrated section stretching between Yonge Street and Avenue Road underwent a major "urban facelift" that introduced chic new granite pavers and state-of-the-art landscaping technology to ensure that the street's London planetrees and Canadian maples will grow to majestic heights. Perfect, since you'll welcome the shade while strolling along under the sunshine, en route to Holt Renfrew, Canada's luxury department store. Holt's Bloor flagship recently completed a massive multi-million-dollar renovation, transforming it into a shrine for shopaholics. And for "ladies that lunch," the chic new Holt's Café should top your list.

## NOTEWORTHY NEIGHBOURS

Speaking of delicious places to indulge, Bloor Street West offers an impressive array, including upscale markets like McEwan, Pusateri's, Whole Foods, and Eataly, the popular food emporium dedicated to pasta, prosciutto, pesto and all things Italiano. The 50,000 square foot space opened last year to such enthusiastic acclaim that opening week queues stretched for blocks, with visitors eager to enter the new it spot in Toronto's epicurean centre.

The western half of Bloor Street West offers a completely different vibe – relaxed, bohemian, cool, and decidedly unique. The charming streetscape is defined by classic one-of-a-kind retailers like the Country Style Hungarian Restaurant, one of the original Hungarian schnitzel establishments that once defined the strip. This haven of comfort food celebrated 60 years in March 2021, and plans to stick around for many more as part of the Annex's culinary DNA. But if schnitzel and goulash aren't your thing, don't fret - an endless array of trattorias, bistros, and coffee houses ensure Cielo residents will never lack for places to experience Toronto's finest cuisine.



---

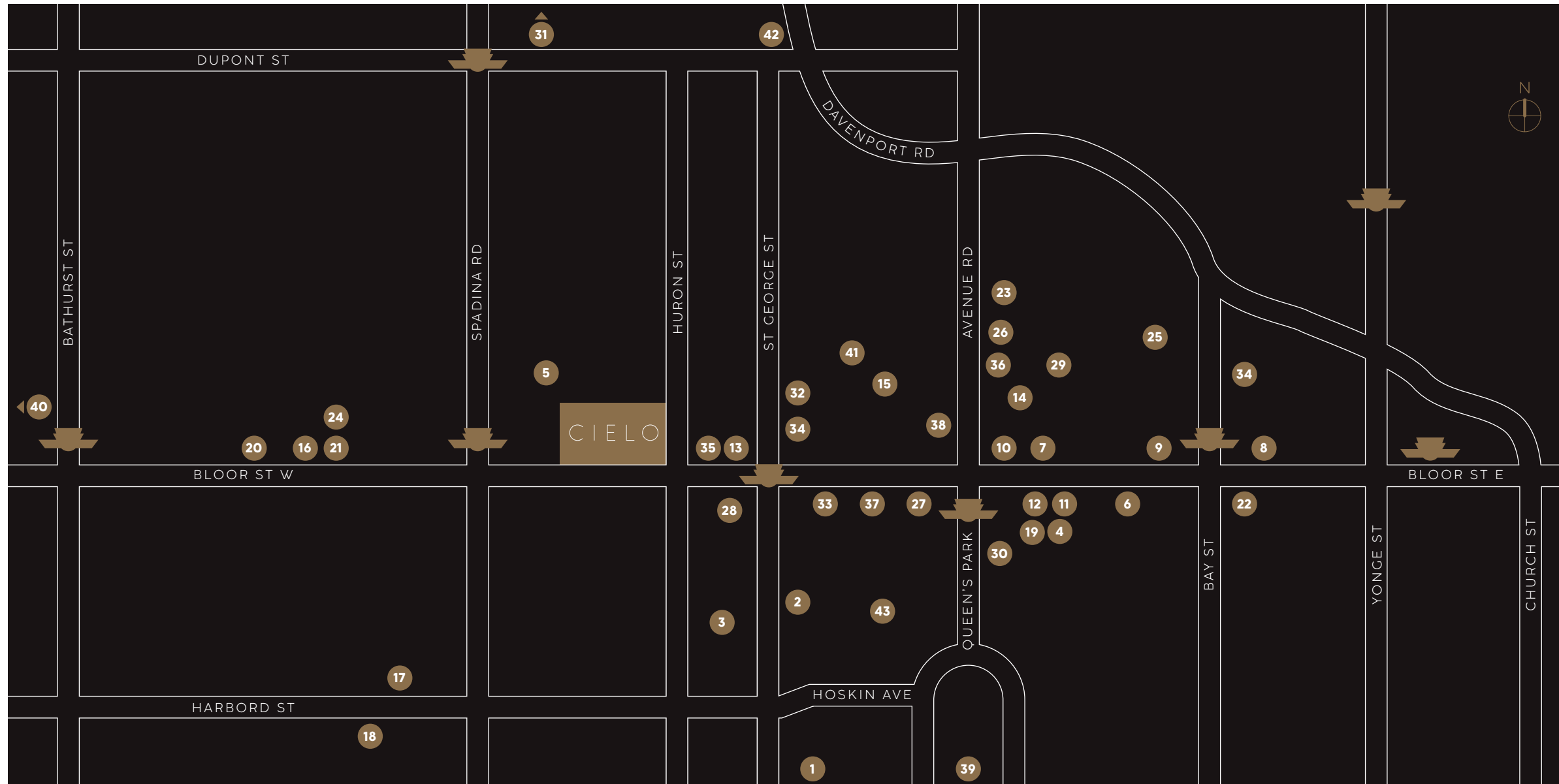
## INTERNATIONAL LUXURY

---

**J**ust a few blocks east of Cielo, starting at Queen's Park, Bloor West morphs into the Mink Mile, one of the world's most deluxe shopping streets, on par with New York's 5th Avenue, London's Bond Street, or LA's Rodeo Drive.

Among the legendary luxury brands that have set up shop on the Mink Mile, and in nearby Yorkville, are Dior and Gucci, Louis Vuitton and Dolce & Gabbana, Burberry and Prada, Hermès and Cartier.





Map is not to scale.

## AN INSPIRED LOCATION

### EDUCATION

1. University of Toronto St George Campus
2. Rotman School of Management
3. John P. Robarts Research Library
4. The Rosedale Day School
5. Howlett Academy

### SHOPPING

6. Dolce & Gabbana
7. Gucci
8. Holt Renfrew
9. Hermès
10. Louis Vuitton
11. William Ashley
12. Wag Swag Brand

### ARTS & CULTURE

25. Canadian Fine Arts Gallery
26. Galerie De Bellefeuille
27. Royal Ontario Museum
28. Bata Shoe Museum
29. Loch Gallery
30. Gardiner Museum

### LIFESTYLE

31. Sir Winston Churchill Park Tennis Club
32. Royal Canadian Yacht Club
33. Varsity Stadium
34. The York Club
35. Kimpton Saint George Hotel
36. Equinox Yorkville
37. The Royal Conservatory of Music
38. Park Hyatt Toronto

### FOOD & DINING

13. Bar Mercurio
14. Alobar Yorkville
15. Trattoria Fieramosca
16. Famoso Neapolitan Pizzeria
17. Piano Piano
18. Yasu Toronto
19. Amal
20. Fuwa Fuwa Japanese Pancakes
21. The Annex Food Hall
22. Eataly
23. Whole Foods
24. Knockout Ice Cream

### PARKS & GREENSPACE

39. Queen's Park
40. Christie Pits Park
41. Taddle Creek Park
42. The Green Line
43. Philosopher's Walk

---

## A DAILY INDULGENCE

---

**T**he Annex is quite literally a moveable feast. But let's start with a few special places right next-door to Cielo.

Positioned just steps from the upscale bars and restaurants on the Mink Mile and in Yorkville; the bistros and cafes on Bloor Street West; and the hip and happening restaurant scene on Harbord Avenue, the Annex is quite literally a moveable feast. Here are just a few of the special places near Cielo.

### BAR MERCURIO

Siblings Joe, Albino and Teresa Mercurio run two extraordinary dining establishments literally a stone's throw from Cielo. Well, to be exact, Joe runs Bar Mercurio while Albino and Teresa oversee L'Espresso Bar Mercurio across the street.

Bar Mercurio is a purveyor of classic cucina Italiano. Patrons will often cool their heels at the venue's namesake bar, savouring a glass of chianti, while waiting to feast on such delectable fare as gorgonzola gnocchi or calamari fritti. Espresso Mercurio is the go-to place for UofT professors and students, as well as intellectuals and creative types from across the Annex and beyond. The Mercurio matriarch is a reassuring presence.



### ALOBAR YORKVILLE

As the younger Yorkville outpost of Canada's #1 ranked restaurant, Alobar lives up to chef Patrick Kriss' reputation for killer martinis, sublime dishes, and upscale décor. Don't let the name fool you, the spot is, in fact, a full-fledged restaurant with a menu that features USDA Prime ribeyes, jumbo prawn cocktails, Dover sole and 14-oz veal chops alongside an impressive wine list, chosen by 2019's Best Sommelier, Christopher Sealy. Tucked into a courtyard between Yorkville and Cumberland, the space exudes mid-town Manhattan sophistication on the Mink Mile.



### KNOCKOUT ICE CREAM

Knockout Ice Cream founder Arthur Pezzelli relocated his ice cream emporium from the Geary Street food strip to the Annex Food Hall, deciding to forgo a traditional design in favour of a takeout window. From Smash Oreo and Orange Creamsicle, to mango ice cream with warm ube coconut sticky rice, the menu of tempting flavours is designed to delight your taste buds.



### JOSO'S

Since its inception in 1967, Joso's - founded by folk singer Joso Spralja and his wife Angioli - has been a landmark in the Toronto restaurant scene. Many of Canada's greatest musical stars have appeared here, including Anne Murray, Gordon Lightfoot, and Joni Mitchell. Regulars can't get enough of the octopus salad, calamari and shrimp kornati, and grilled sardines.





## EATALY

With its record-setting opening on November 13, 2019, Eataly, the food emporium in the Manulife Centre, exponentially expanded Toronto's Italian gastronomic scene with the introduction of a score of restaurants, bars and food counters in a mind-boggling 50,000 sq. ft. culinary complex. The renowned Italian chain teamed up with Naples-based Rossopomodoro to design its in-house restaurants. The roster includes La Pizza & La Pasta, specializing in traditional Neapolitan 'za; La Piazza, serving up endless aperitivos and formaggi; La Pescheria, with oysters and daily fresh fish served raw, pan-seared, or roasted; and, finally, Trattoria Milano, a shrine to northern Italian cuisine.



## THE YORK CLUB

Just a block away from Cielo sits The York Club, the former residence of 19th century plutocrat, George Gooderham. The club has one of the finest kitchens in the city and, arguably, one of its best wine cellars. Behind the great red brick wall that runs along Bloor, you'll find the club's idyllic garden, which, at the height of summer, is one of the most exquisite places in the city to lunch or dine al fresco, under towering trees.

## YORKVILLE

### BUCA

Buca Yorkville, a branch of the original King Street restaurant, is an outstanding osteria and bar from critically acclaimed celebrity chef, Rob Gentile. Feast on signature dishes like polipo e vongole (braised octopus with bone marrow, kale, crisp artichoke, and clams) and burrata e fichi (creamy cheese served with black fig). Why do dishes always sound more delicious in Italian?



### ONE RESTAURANT

ONE Restaurant is legendary Toronto chef, Mark McEwan's, see-and-be-seen restaurant in Yorkville. Its tree-lined summer terrace is the top spot in town for celebrity sightings. The raw bar alone is worth a visit for the yellowfin tuna sashimi and caviar garnished with crème fraiche, egg yolk, chive, toast points and blinis. Caviar and red carpet royalty, does it get any better?



## BLOOR STREET WEST

Bloor Street West is home to a lineup of vibrant restaurants from all over the world. Japanese, Korean, Vietnamese, and Middle Eastern specialties abound. There's also the requisite English pub - Paupers - as well as the North Toronto legend - St. Louis Bar & Grill. Think of Bloor West as the perfect note to balance the fine dining scene on the Mink Mile.




---

## HARBORD VILLAGE

---

**H**arbord Street, west of Spadina, has long been a restaurant destination for Torontonians from all parts of the city. Over the years, the intimate neighbourhood has spawned many acclaimed restaurants, while retaining its “village identity” and remaining an integral part of the Annex neighbourhood. Here are just two of the establishments presently contributing to Harbord’s stellar reputation.



### YASU TORONTO

Located in the heart of the Harbord Street restaurant strip is Yasu, viewed by many as the top sushi bar in town. Owned by Osaka-born executive chef, Yasuhisa Ouchi, Yasu is an intimate space with just 10 seats at the bar, plus a deuce in the alcove. Its menu changes daily, depending on what seafood has been delivered fresh from across the globe. But if you’re looking for choice, there is none. The single entrée is a Omakase-style tasting flight, consisting of eighteen to twenty sushi pieces, served one at a time and crafted from ingredients like sea eel, Japanese snapper, snow crab, flounder, bonito, toro, or anything else in its seasonal prime.



### PIANO PIANO

If everything old is new again, then it seems fitting that the legendary Splendido restaurant’s onetime premise at 88 Harbord is now occupied by Piano Piano, the village’s new hot spot. Owned by chef Victor Barry and his wife Nikki, the restaurant serves up fare Barry describes as “New Jersey” Italian. With pizzas named The Fun Guy, The Sweet Hornet, The Iberian (alongside the more traditional Margherita), the description seems apt.

**A**thletic pursuits don't have to involve huge amounts of equipment and specialized terrain. Indeed, one of the most appealing sporting activities surrounding Cielo requires strapping on a simple pair of Nikes or Adidas and heading out for a walk, jog, or run. Explore the U of T campus, full of quads, playing fields and walking paths. Run circles around the limestone track at Queen's Park or under the trees of Philosopher's Walk. Pause for a breath in the open green space of Taddle Creek Park at Lowther Avenue and Bedford Road, beside century-old trees and a fountain shaped like a water jug. Warm up and cool down in the Huron/ Washington Parkette, next door to Cielo and the perfect place to start and end your journey.



### UNIVERSITY OF TORONTO'S SPORTS FACILITIES

Most of UofT's major sports facilities - Varsity Stadium, the Harbord Street Athletic Centre and the Robert Street Field - offer very reasonable "community memberships" for people living near the university. Dedicated fitness enthusiasts will want to check out The Goldring Centre For High Performance Sports. A recent addition to the university's sports scene, the Goldring, on Devonshire Place near Bloor, is a short walk from Cielo and focuses on training the university's most elite athletes, so its facilities are state-of-the-art.

Varsity Stadium is home to the university's legendary football team, the Varsity Blues, and its arena is home to its hockey team. The whole complex was rebuilt a few years back, so facilities are top notch, and the stadium and arena are perfect places to run in the summer and skate in the winter. When the weather turns chilly, a massive artificial dome covers the grid, creating ideal conditions for a driving range where golfers can practice their swing.



---

### PEAK PERFORMANCE

---

#### THE HARBORD STREET ATHLETIC CENTRE

Located at the corner of Spadina and Harbord, the Harbord Street Athletic Centre is unquestionably the Annex's hub for swimming, running, and resistance training. Facilities run the gamut from 8- and 6-lane pools, to sports gyms, from a strength and condition centre, to squash and table tennis courts. Whatever you're looking for, you'll find it here.

#### THE ROYAL CANADIAN YACHT CLUB CITY CLUBHOUSE

Located next to the York Club and St. George TTC station, lies the City Clubhouse of the Royal Canadian Yacht Club (RCYC). The main clubhouse, of course, grandly sits on Toronto Island and looks like an antebellum mansion straight out of *Gone with the Wind*. Dating back to 1852, the RCYC is one of the world's oldest and largest yacht clubs. In 2020/21 it was named one of the top 50 platinum yacht clubs in the world. With such a pedigree it's clearly the go-to place in town, perhaps in the country, for anyone keen to perfect their nautical skills.

The main island clubhouse can be reached by ferry or by private boat, but the City Clubhouse, on St. George, mere minutes from Cielo, offers some wonderful features on shore, including a 4,500 sq. ft. fitness facility, an exciting cardio class schedule, strength and yoga training, 5 international singles squash courts, 1 doubles court, 3 badminton courts, a 13.8-metre swimming pool, a childcare centre, some of the best dining facilities in the city and much more.

#### EQUINOX YORKVILLE

Believed by many to be the coolest and hippest gym franchise in North America, Equinox is located just a few blocks from Cielo at Avenue Road and Yorkville. Spread over two floors in the deluxe Yorkville Village shopping centre, the club has a distinct LA/Miami/Manhattan vibe. Equinox Yorkville was the franchise's Canadian launchpad for the simple reason that the Yorkville/Annex sensibility syncs perfectly with the club's upscale ethos. Try one of the club's body-transforming classes in Pilates, yoga, METCON, cycling, boxing, or barre and you'll be hooked.





A VISIONARY DEVELOPER

**C**ollecdev is a visionary development company dedicated to building better communities. The firm champions an integrated approach throughout the development process and is committed to being at the forefront of sustainable building practices while maintaining uncompromising standards of quality.

Collaborating with industry leaders in all disciplines, the company takes pride in advancing innovative ideas, resulting in a collective vision. Collecdev communities are designed to create balanced and complete communities that reflect the way people truly want to live.



## SOCIAL SUSTAINABILITY

Building communities that anticipate the future while balancing today's needs is the cornerstone of Social Sustainability. It entails a constantly evolving outlook on spaces that integrate diverse programmatic elements, stimulating conversation and provoking new ideas for healthy, balanced environments. Beyond the individual buildings and their associated amenities, we take responsibility to ensure that we layer community services and facilities to create a thriving sense of place. We advance housing initiatives that are accessible to all, and ensure private and public spaces are designed to enrich society as a whole.

## EXPERIENTIAL DESIGN

Understanding the wants and needs of our homeowners is essential to creating the ultimate living experience. As such, we apply a diligent approach to designing every element our communities, from macro to micro, through an iterative process where the small details inform the big moves, and vice-versa. We give careful consideration to both the existing contexts in which we build, and to the intimate living spaces in the communities we create. Striking a balance between form and function is our ultimate goal. We take every precaution to ensure that our projects are future-proofed. The result is a human-centred, multi-layered design approach that welcomes families home.

## ENVIRONMENTAL STEWARDSHIP

At Collecdev we acknowledge an inherent responsibility over the impact of our communities on the natural and built environment. The unprecedented rate of urbanization demands a forward-thinking approach in order to build long lasting balanced urban landscapes. This is achieved through the careful consideration and implementation of advanced building technologies and alternative energy sources. Various initiatives to reduce the carbon footprint of our communities are executed in order to realize one of our primary objectives. Collecdev's investment in Environment Stewardship is a fundamental part of developing communities that ensure a better tomorrow.

## **BLOOR STREET UNITED CHURCH**

Faith. Justice. Community. Respect. These are the cornerstones of Bloor Street United Church (BSUC), a congregation that has been welcoming people of all backgrounds to the Annex for more than 130 years. From its earliest days in 1889, BSUC has been a safe haven for people of all different walks of life; all genders, sexualities, races, and backgrounds are welcomed within the sacred stone walls. Today, BSUC continues to engage with its congregation, delivering new and exciting ways to socialize, explore faith, find meaning, and serve the community, all close to home.

---

## **A CELEBRATION OF SYNERGY**

---

### **ERA ARCHITECTS INC.**

Since its inception in 1990, ERA Architects has established itself as Canada's foremost heritage architectural practice, responsible for the restoration and renewal of countless historic buildings and neighbourhoods across the country. ERA's core interest is "connecting heritage to a wider consideration of urban planning and city building," an ethos that is evidenced in their award-winning body of work including such iconic projects as the Toronto Distillery District, the Evergreen Brickworks, Maple Leaf Gardens, and the Senate of Canada Building.

### **KPMB**

Since its founding in 1987, KPMB has established itself as one of the world's leading architectural design practices. The firm's work has garnered more than 400 national and international awards including sixteen Governor-General Awards, Canada's pre-eminent architectural design honour. For their contribution to the profession, its three founding partners, Bruce Kuwabara, Marianne McKenna and Shirley Blumberg, have all been inducted into the Order of Canada. KPMB has distinguished itself for both its refined modernist aesthetic, as well as the sensitivity with which it incorporates new structures into established urban environments. Among their many outstanding buildings are Koerner Hall at Toronto's Royal Conservatory of Music and Winnipeg's Manitoba Hydro Place, considered one of the world's most energy-efficient green buildings.

### **RESIDENTIAL DEVELOPMENT SERVICES**

Residential Development Services' (RDS) pedigree consists of decades of combined experience representing industry-leading developers and working closely with their talented teams on a broad range of high-profile, ultra-luxury, and multi-phased communities. The RDS portfolio represents over \$6.5 billion in sales and over 13,000 home transactions. The company tailors product, strategy and all aspects of the sales roll-out to appeal to audiences via an exceptional front-line sales experience. Each community is approached with obsessive attention to detail for a curated customer experience and community design collaboration that stands the test of time.

## **JANET ROSENBERG & STUDIO**

For over forty years Janet Rosenberg & Studio (JRS) has been creating stunning gardens and landscapes for institutional, corporate and private clients, among them, HTO Park on Toronto's waterfront, the gardens for Niagara-on-the-Lake's Jackson-Triggs winery, the master plan for Rideau Hall, the Governor-General's residence in Ottawa and numerous condominium projects like Massey Tower, Imperial Plaza, One & Two Old Mill and more. Helmed by Janet Rosenberg, JRS has won numerous awards for its work, including the recent Canadian Institute of Planners Award for Toronto's Mirvish Village, presently under development. In its practice, JRS strives and succeeds in creating "spaces for people that are beautiful, functional and resilient."

### **MONTANA STEELE**

Toronto-based strategic marketing agency Montana Steele has been creating award winning real estate brands, at home and around the world, for more than two decades. The firm is regarded as North America's leading agency for new homes and condo developments, and for good reason; in 25 years the firm has launched nearly 1000 successful projects, in 30 cities, with some of the biggest names in the business.

# CIELO

300 BLOOR STREET WEST



NORTH WEST VIEW

Renderings are artist's concept E&O.E



COLLECDEV