

Art@

at the Source

2023
OPEN STUDIOS
June 3-4 & 10-11
10AM - 5PM

ArtAtTheSource.org

CERAMICS
 DRAWING
 FIBER ARTS
 GLASS
 JEWELRY
 MIXED MEDIA
 PAINTING
 PHOTOGRAPHY
 PRINTMAKING
 SCULPTURE
 WOODWORKING

A Program of
SEBASTOPOL
CENTER
 FOR THE
ARTS



Terry Sauvé

LUMINOUS LANDSCAPES
Original Oil Paintings and Prints



OPEN for visitors • Outdoor Viewing Options • Studio 22

Private appointments year-round • Commissions accepted

855 Montrose Court, Santa Rosa, 95401 • (415) 867-8676 • terry@terrysauve.com

terrysauve.com



Art@ at the Source

OPEN
STUDIOS
2023

5 LETTER FROM THE DIRECTORS

10-29 ARTIST PAGES

Discover new works from
116 participating artists

30-33 MAPS

Visit artists in their studios
around Sonoma County

34-43 ARTIST DIRECTORY

44 ARTIST BY-MEDIUM DIRECTORY


ARTIST DEMONSTRATIONS

Experience the art process first-hand
with drop-in demonstrations.

Check ArtAtTheSource.org for a full
schedule and latest safety updates.

ArtAtTheSource.org

  @ArtAtTheSource

 Accessible studios are marked
within artist listings

A Program of

**SEBASTOPOL
CENTER
FOR THE
ARTS**

282 S. High St. Sebastopol, CA 95472

(707) 829-4797

SebARTS.org



35 YEARS OF SERVICE TO THE COMMUNITY **40** EVENTS A YEAR **60** CLASSES

50,000 GALLERY VISITORS ANNUALLY **45,000** OPEN STUDIO VISITORS

10+ ANNUAL EXHIBITS **5000** SEBASTOPOL DOCUMENTARY FILM FEST ATENDEES

VOLUNTEER

JOIN

DONATE

SEBASTOPOL
CENTER
FOR THE
ARTS

SebARTS.org

BOARD OF DIRECTORS

Sally Baker | PRESIDENT

Sandi McCubbin | VICE PRESIDENT

Len Goldfine | TREASURER

Linda Loveland Reid | SECRETARY

Andrea Caron

Omar Figueroa

Mark Stevens

STAFF

Sue Ellen McCann, Steve Markus
INTERIM EXECUTIVE TEAM

Luna Sorrenti
OPERATIONS COORDINATOR

Shaina Williams
PROGRAM COORDINATOR

Michelle Carnes
MARKETING + VISUAL COMMUNICATIONS

Jen Vertz
SEBARTS/SDFP SOCIAL MEDIA

STEERING COMMITTEE

Elizabeth Peyton | CHAIR

Sally Baker

Beverly Bird

Caren Catterall

Mark Freed

Jane Garibaldi

Penny Knapp

Katie Kruzic

Karen Lockert

Rebecca Love

Linda Loveland Reid

Patricia Reilly

Luann Udell

CATALOG DESIGN

Michelle Carnes

COVER ARTISTS

Doug Carmichael | 109B

Suki Diamond | 65

Pamela Leotta-Wallace | 73A

WELCOME TO ART AT THE SOURCE OPEN STUDIOS 2023!

It is another inspiring year for our Art at the Source Open Studio program. This annual event offers the opportunity for our amazingly talented Sonoma County artists to open their studios to the public and the intimate experience of engaging and connecting personally with the artists themselves. And it is easy and fun to do. Just follow the yellow Art at the Source signs along the roadside or use the map enclosed in the catalog and step into the world of an artist of your choice.

Viewing artwork in a gallery is wonderful, but... meeting the artist at work, discovering their work, connecting with their world, is the opportunity of a lifetime. What inspires these creations? Who are the personalities behind the art? How do they do their work? Join the many art lovers and enthusiasts as they tour our exceptionally beautiful Sonoma County countryside and experience these unique works by our arts community. You have 116 amazing artists to choose from this year.

Our Art at the Source Open Studios program was launched more than 30 years ago by a handful of passionate people – and it is still going strong. This program supports established and emerging artists collaborating to bring this program to the public and towards mutual success. You also play an important part in this. By bringing beautiful artwork home, you support artists, Sebastopol Center for the Arts and the local economy.

Sebastopol Center for the Arts is a non-profit organization that offers nine different programs. We are committed to cultivating creativity and inspiring appreciation for the transformative power of art by producing local, national and international events in the arts through curated gallery exhibits, award-winning open studio events (Art at the Source and Art Trails), a state-of-the-art ceramics studio, art lectures, poetry readings, concerts, adult and youth education and the Sebastopol Documentary Film Festival – an acclaimed Academy Award® qualifying festival. We love that Art at the Source fulfills our mission to ***Experience Art, Make Art, Share Art and Celebrate Creative Thought.***

Enjoy!



Sue Ellen McCann,
Interim Executive Director

Graton • 9 Artists in 1 Cool Town

Atelier One, 2860 Bowen St., Graton and 2 private studios nearby



Britta Kathmeyer #97



Elizabeth Peyton #93



Becky Wells #92



Karen Lockert #96



Susan Bradford #107



Linda Sorensen #94



Nishi Marcus #95



Lisa Beerntsen #98



Pat Engel #90

Art at the Source • June 3-4 & 10-11, 2023 • Sonoma County, California • See Map at ArtAtTheSource.org



Suzanne Edminster

Lisa Beerntsen

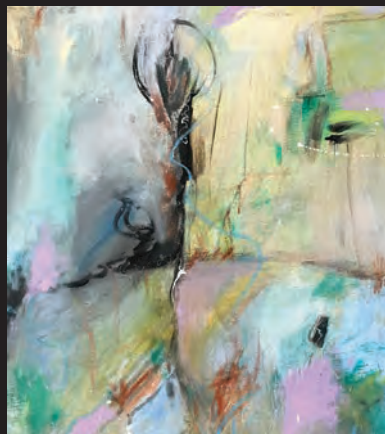


SEBASTOPOL GALLERY



Michelle Hoting

James Reynolds



**fine art, craft
& jewelry
by local artists**



Diana Majumdar

Open daily • 10am - 5pm
150 North Main Street • Sebastopol, CA 95472
707-829-7200 • Sebastopolgallery.com

Follow the signs to Studios #72, #73, #74, #75
Eight Bodega Bay Artists on the Coast!



John Hershey Photography



Lillian Lehman
 Mixed Media /
 Figurative Sculpture



Pamela Wallace
 Oil, Pastels, Watercolor Painting



PJ Kirk Oil Painting



Rakshika Thakor
 Printmaking, Textiles



Cathy Beck Photography



Michelle Carnes
 Oil Painting



Holly Wallace
 Glass Art for Home & Garden

Come for the ART! Stay for the BEACH and the SEAFOOD!

Supporting Artists and Collectors for 34 Years



TANOUE Shinya — 2022 scored ceramic sculpture with cobalt glaze, 8 x 26.5 x 7 inches

THE REN BROWN COLLECTION

G A L L E R Y

Open 10 to 5, Closed Mondays & Tuesdays
 1781 Highway One, Bodega Bay
www.renbrown.com 707-875-2922



Modern Japanese Prints · Local Artwork
 Japanese Antiques · Fine Ceramics

Russian River Artists

A short, scenic drive for a lot of art!

Studio 109 22657 Sylvan Way, Monte Rio



Penny Knapp
Painting: Watercolors, acrylic, mixed media, landscapes, animals, fantasy



Douglass Carmichael
Painting: Local landscapes in oil

Studio 111 30 Marigold Lane, Forestville



Barb Lawson
Painting: Impressionist watercolors, multimedia & oil - floral, seascape, landscape, andlines & still life

Studio 110 16120 Watson Rd, Guerneville

Hal Bohner
Painting: Landscapes and abstract art



Robin Mills
Photography: travel, nature, and everything in between



Sandra Maresca
Colorful, impressionistic oil & watercolor paintings



Russian River



Gallery

A LOCAL ARTIST COOPERATIVE

16357 Main St
Guerneville, CA
russianrivergallery.com
(707) 869-9909

Marge Margulies
pottery

www.margemarguliespottery.com



open anytime by appointment

5 ARTISTS

1 NEIGHBORHOOD



Corrine Haverinen

STUDIO 31



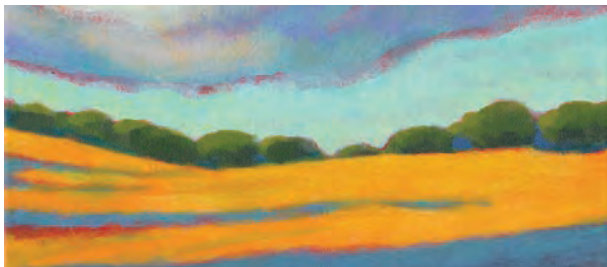
Suzanne Edminster

STUDIO 32



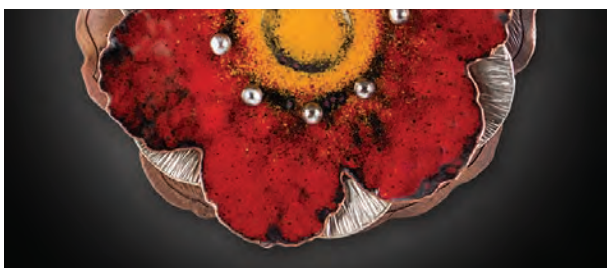
Christie Marks

STUDIO 33



Karen Lynn Ingalls

STUDIO 34



Patricia Reilly

STUDIO 35

SOUTH A STREET
SANTA ROSA, CA 95401

SOFA
SOUTH A ST. ARTS DISTRICT, SANTA ROSA

James Reynolds

Studio 51

514 Parquet Street
Just four blocks from
Seb Center for the Arts

707.829.3501



Anna's Hummingbird, watercolor

Commissions welcome.
JamesRReynolds.net

SALLY BAKER
WATERCOLORS

Studio #108
10 am-5 pm



Daily
Watercolor
demonstration
at 2:00

Shelley Rae
Jewelry



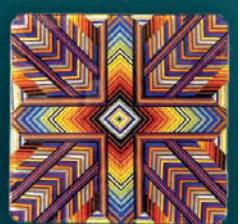
www.shelleystudio.com

Pam Selvaraj
Sculpture



pamselvaraj.com

Mark Freed
Glass



freedglass.com

sallybaker.com

707-829-0396

5990 Vine Hill School Rd. Sebastopol, CA 95472
Between Laguna & Vine Hill Rd. Off Guerneville Rd



1



Lance Kuehne
PHOTOGRAPHY

I primarily photograph the landscapes of the North Bay Area. My goal is to create simple and elegant work, focusing on a sense of place, light, and mood that creates timeless and collectible artwork.

401 7th Street, Suite 15, Petaluma
LanceKuehne.com



2

Jennifer Robin
PAINTING

In my studio, real and imagined landscapes vibrate with emotion and intensity. Fluid watercolor followed by a bold application of opaque pastel allows me the most freedom of expression.

6 Scenic Way, Petaluma
GrowingMoreBeautiful.com



3



Alison Marks
JEWELRY

I create silver and gold jewelry and talismans inspired by patterns in nature and the built human world. "Gritty and pretty," these are grounded and contemporary, yet evocative of something ancient.

512 Melvin Street, Petaluma
AliMarks.com



4



Roger McErlane
PAINTING

Roger's oil paintings focus on the built world, things that man has made in context with natural conditions and the creation of beautiful places and things in nature.

419 Sheldon Street, Petaluma
RogerMcErlane.com



5

Camille Przewodek
PAINTING

I am a plein air artist in the tradition of Monet. My aim is to capture the light key of nature which is determined by various factors such as time of day and atmospheric conditions.

522 East D Street, Petaluma
Przewodek.com



6

Bruce Fossum
PAPER CASTING

Sheets of virgin cotton paper are pulled from multiple tubs of pigmented pulp. These sheets are laid onto the bottom sheet. The more textured works are pressed into a mold which I create.

811 Bluegrass Drive, Petaluma
BruceFossum.com



7

Linda Donohue

PAINTING

Large abstract acrylic expressionist and coastal paintings on gallery wrapped canvas and wood panels inspired by life in the San Francisco Bay Area.

720 Southpoint Blvd #211, Petaluma
Lpdart.com



8A

Diana Majumdar

MIXED MEDIA

Mixed media. Collage, complex layered surfaces, encaustic, painting in oil.
Inspired by nature. Birds.

150 Valley View Drive, Petaluma
DianaMajumdarArt.com



8B

Anita Selinger

JEWELRY

My original works of art are cast into silver and gold using the lost wax process. My passion for color is fulfilled by combining natural gemstones, vitreous enameling, and different precious metals.

Showing at
150 Valley View Drive, Petaluma
AnitaSelinger.com



9

Linda Loveland Reid

PAINTING

I want my abstracts to grab a mood, to excite, to charge the atmosphere with joy, even mystery. My quest is to find the emotion. I try to remember that painting, when not terrifying, is fabulous.

1730 E Cotati Avenue, Penngrove
LindaLovelandReid.com



10

Laura Parker

DRAWING

I am a multimedia artist whose work focuses on food, land and agriculture.

4715 Sheehan Lane, Santa Rosa
LauraParkerStudio.com



11

David Harris

PAINTING

Inspired by the beauty of Sonoma County and California, my work in oil on canvas and watercolor, reflects my interpretation of our surroundings, ranging from traditional to impressionistic renditions.

8837 Oakmont Drive, Santa Rosa
HarrisKasten.com



14



Bill Monaghan

PAINTING

To keep colors pure, my work is oil paint applied by palette knife. Most work is en plein air to capture truer color and light. Paint application is wet-on-wet on canvas or canvas covered board.

136 Oak Island Circle, Santa Rosa
BillMonaghanArt.com



15



Peter M. Krohn

PHOTOGRAPHY

I create still life art using a scanner and objects from nature and my garden. Unique luminous images result by printing these on aluminum. Please come for a demonstration, magic will be revealed.

9409 Oak Trail Circle, Santa Rosa
BlessingsOfTheEarth.com



20

Ann Rosmarin

PAINTING

I am drawn to capturing the surrounding landscapes and my emotional response to these moments in time. My work, oil on canvas, hovers in that field between impressionistic and abstract.

903 Wildwood Trail, Santa Rosa
AnnRosmarin.com/FineArt



22

Terry Sauvé

PAINTING

Luminous, iconic, California and Western landscapes that capture the beauty of the season and the time of day. Original oil paintings and fine art prints at TerrySauve.com.

855 Montrose Court, Santa Rosa
TerrySauve.com



23

Deborah Butterfield

MIXED MEDIA

Japanese paper is my passion! I use it to create framed matted paper mosaics, covered boxes, cards, and other artistic gift items. Each piece is inspired by the beautiful papers and life's adventures.

3621 Lurline Way, Santa Rosa
ExultationArts.com



24A

Gail Morgan

PRINTMAKING

My work is inspired by nature, philosophy and my wandering mind. Mostly, I create abstract monotypes which may include forms that evoke memories and images for the viewer. Art is personal connection.

4816 Stonehedge Drive, Santa Rosa
GailMorganArt.com



24B **Barbara Schwartzberg**
CERAMICS

Unique butter dishes and cheese domes now complement my mugs and tableware. I use texture, decals and underglazes to create my fun, whimsical pottery, laughing while I make my pieces.

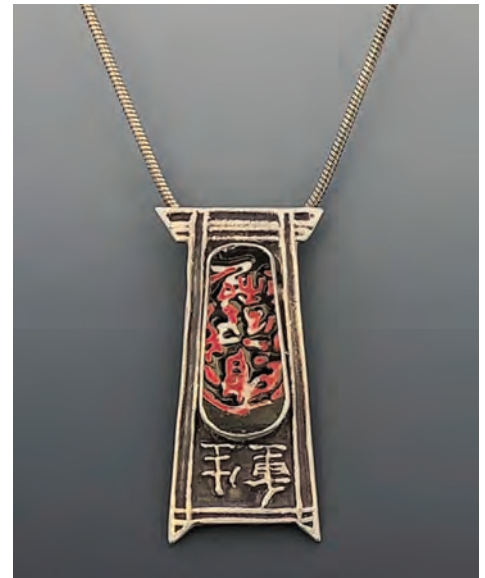
Showing at
4816 Stonehedge Drive, Santa Rosa
EdgeHillPottery.com



25A **Valerie Adams**
GLASS

One-of-a-kind fused glass artwork and lighting, functional and decorative tableware, smile-inducing garden art and dazzling accessories. Juicy colors and clean, aesthetic layouts define my approach.

3018 Santa Anita Court, Santa Rosa
ValerieAdamsGlass.com



25B **Mary Neuer Lee**
JEWELRY

A metalsmith for over 50 years, I have embraced the unique artistic possibilities of metal clay for the last 18 years. Nature, beautiful stones and bits of vintage china are my inspiration.

Showing at
3018 Santa Anita Court, Santa Rosa
MaryNeuerLee.com



26 **Don Ajello**
SCULPTURE

It is my intention within a mixed media format to sculpturally take "a tongue in cheek," whimsical investigation of mine and your life. With some skill and luck, I might achieve that.

2257 Santa Fe Drive, Santa Rosa
DonAjello.com



27 **Deborah Haeffele**
PAINTING

I paint images that are evocative and yet accurate representations of a particular time and place. Light and color are powerful tools applied by palette knife and brush that can trump photography.

2250 Nectarine Drive, Santa Rosa
OilArtist.com



28 **Michael Pollare**
SCULPTURE

I own a commercial bronze art foundry in Santa Rosa. We create table top size miniature monuments. All can be converted to urns and sometimes fountains. We also make affordable bronze gifts.

120 Todd Road, Santa Rosa
BronzePlusFoundry.com



29



Katie Kruzic

PAINTING

Bold natural landscapes of Northern California, expanses and details.

1197 Dutton Avenue, Santa Rosa
Hilltop-Art.com



30

Robert Ankers

SCULPTURE

Imagery making a twist on reality, bordering on surrealism. Mixed media sculptures using fine art materials and plastic casting to simulate objects and telling a story with unexpected concepts.

134 West 7th Street, Santa Rosa
RobertAnkers.com



31



Corrine Haverinen

PAINTING

With a singular devotion to trees and inspired by ancient Asian art, Corrine applies brush painting and pointillism techniques on a variety of traditional papers from the Far East.

312 South A Street, Studio E, Santa Rosa
Have-Art.net



32



Suzanne Edminster

PAINTING

Striking large abstractions with a mythical feeling.

312 South A Street, Studio 6, Santa Rosa
Saltworkstudio.com



33



Christie Marks

MIXED MEDIA, PAINTING

Layered abstract realism, global inspiration.

312 South A Street, Studio 7, Santa Rosa
ChristieMarksArt.com



34



Karen Lynn Ingalls

PAINTING

Colorist landscape and abstract landscape paintings of rural California.

312 South A Street, Studio I, Santa Rosa
KarenLynnIngalls.com



35



Patricia Reilly
JEWELRY

My work is created using the alchemical process of fusing colored powdered glass to metal using a torch or a kiln. The enameled elements are then assembled into small wearable works of art and craft.

445 Sebastopol Avenue, Santa Rosa
PatriciaJaneReilly.com



36

Luann Udell
MIXED MEDIA

Handmade artifacts from a lost culture, an imagined prehistory.

33Arts at 3840 Finley Avenue, Santa Rosa
LuannUdell.com



37



Lois Donaghey
PAINTING

I paint bright and textured landscapes and florals using oil and cold wax medium. My landscapes and florals are imaginative and abstracted versions of what I see and feel when in nature.

918 Slater Street, Santa Rosa
LoisArt.com



38A

Julia Kwitchoff
FIBER ARTS

Intricately detailed fabric flowers and moths, one of a kind clothing created from vintage fabric, and unique jewelry of silver, African trade beads and unusual findings

656 Tupper Street, Santa Rosa
MadJeLLo.com/julia



38B

Madeline Behrens-Brigham
MIXED MEDIA

Years ago on my grandmother's farm, I learned to use what was at hand. Cardboard, cigar boxes, found ephemera and sent trinkets are the ingredients to my dioramas and assemblages that fill my days.

Showing at
656 Tupper Street, Santa Rosa
MadJeLLo.com/Madeline

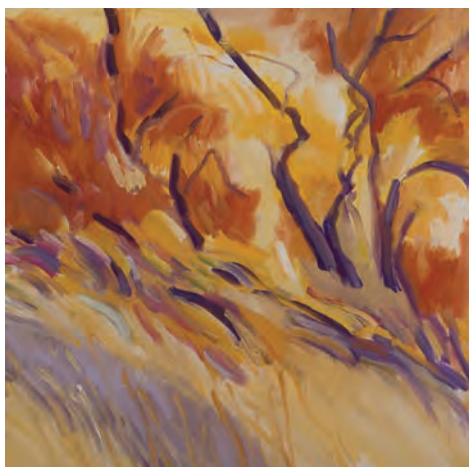


38C

Lori Bowden
MIXED MEDIA

Fanciful creations made with metal, tiles, toys, wood, lights, stones and other fun items from my 40+ year collection of treasures.

653 Tupper Street, Santa Rosa
MadJeLLo.com/lori



40

Marsha Connell

PAINTING

Contemporary plein air and studio painting: oil, pastel, watercolor. Observation, mirroring the natural world, joins improvisation, responding to spirit of place. Doors open to the inner landscape.

2180 Beverly Way, Santa Rosa
MarshaConnell.com



41A

Michelle Hoting

JEWELRY

Inspiration comes from forms and textures I find in nature. I design and fabricate each piece to achieve a sense of movement and balance echoing nature with the stylish timelessness of an heirloom.

321 Buena Vista Drive, Santa Rosa
MichelleHoting.com



41B

Sally Kent

FIBER ARTS

Enchanted by the warmth created when light illuminates wool, I became passionate about making felted lamps. Each lamp is unique and is an interpretation of something I've seen or felt in nature.

Showing at
321 Buena Vista Drive, Santa Rosa



42A

Mary J Ruggles

PAINTING

Using watercolor, acrylic, collage, or pastel, my work is often inspired by my garden. Often it takes on a whimsical feeling. I have a huge selection of greeting cards made from my paintings.

3533 Deer Park Drive, Santa Rosa
MaryJRuggles.com



42B

Arthur Robinson

WOODWORKING

Using both reclaimed and new woods, I try to create useful home/garden decor and furnishings. Ideas such as stained glass "pictures" using wood instead of lead spacing and solder inspire me.

Showing at
3533 Deer Park Drive, Santa Rosa
WolfStarWW.com



42C

Francesca Scalpi

PHOTOGRAPHY

I love capturing the wonders of the night sky, the colors of a sunset, reflections or a twinkle in the eye of an owl. A sense of place and moment. An emotional connection with the natural world.

Showing at
3533 Deer Park Drive, Santa Rosa
FrancescaScalpi.com



43



Suzanne Carson

PAINTING

Landscapes and figurative genre. My students used to say I painted with wild abandon ... fast and loose. Spontaneity with a purpose, tracing thoughts and feeling into the language of paint.

683 Dixon Court, Santa Rosa
SuzanneCarson.com



44A

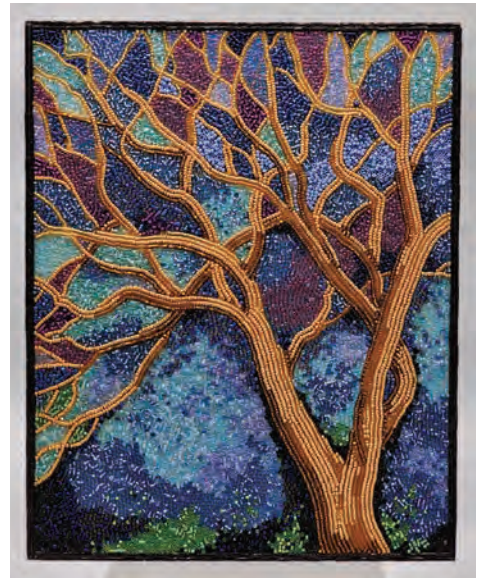


Jane Garibaldi

JEWELRY

When in a serious mood, I create contemporary jewelry in silver and gold. But when in a whimsical mood, my creations become small nature-inspired 3D worlds, drawing the viewer in and telling a story.

268 Oak Tree Court, Santa Rosa
JaneGaribaldi.com



44B



Julia Bombardier

MIXED MEDIA

Luminous textural glass bead mosaics mixed with paint, foil, and other fun things.

Showing at 268 Oak Tree Court, Santa Rosa
MagicDoorINC.com



44C



Cathy Wayne

FIBER ARTS

Handcrafted wool felt hats created from raw material, original designs inlaid, then shaped by hand. Handwoven clothing and scarves. Silk scarves: botanical print, shibori, and batik.

Showing at 268 Oak Tree Court, Santa Rosa
CathyWayne.com



44D



Jenny Abramson

PHOTOGRAPHY

Haunting nature and landscape photography exploring the mysteries of existence and the transformative life journey. For me, the landscape mirrors both my "interior landscape" and universal concerns.

Showing at
268 Oak Tree Court, Santa Rosa
JennyAbramson.com



45



Victoria A. Kochergin

DRAWING

With the heart of an artist, eyes of a botanist and hands of a perfectionist, I aspire to capture Nature's infinite beauty with colored pencil.

602 Von Reimers Lane, Santa Rosa
VictoriaKochergin.com



46

Lenona Winter

PAINTING

I am a plein air impressionist oil painter of landscape, seascape and still life, focusing on painting colors as affected by light and atmosphere.

5577 Ver-Ni Road, Sebastopol
LenonaWinter.com



47A

Barbara A Harris

JEWELRY

Jewelry made from unexpected and often rowdy materials. Elegant, while whimsical – easy and special to wear.

583 Harrison Street, Sebastopol



47B

Stephen Heagan

DRAWING

Completely hand-drawn photo-realistic framed drawings using colored pencil and graphite.

Showing at
583 Harrison Street, Sebastopol
ArtemisAnimalArt.com



48

Mylette Welch

PAINTING

Whimsical animals, botanicals and narrative art.

222 Pitt Avenue, Sebastopol
MyletteWelch.com



49A

Helen Nicholas

CERAMICS

Italian style Maioliche ceramics.

241 Florence Avenue, Sebastopol
helennicholasart.com



49B

Gregory Nicholas

CERAMICS

I have tried using only slab or sculpted pieces of clay, but find that the coiled strands of clay rolled together give the sense of animation, like my pieces are alive and about to spring up and jump!

241 Florence Avenue, Sebastopol
gregnicholas.com



50

Lynn Zachreson

PAINTING

Watercolor and oil paintings inspired by life – the color, texture, form, and light we encounter every day.

7630 Leland Street, Sebastopol



51

James Reynolds

PAINTING

I hope my work conveys the joy and gratitude I feel to be a human and an artist on this beautiful planet.

514 Parquet Street, Sebastopol
JamesRReynolds.net



52

Jeremy Calnan

PAINTING

As an abstract painter, my creative process is intuitive and always spontaneous. My finished works are varied and often quite colorful—each piece is completely its own thing. Come see for yourself!

568 Petaluma Avenue, Sebastopol
JeremyCalnan.com



53

Aaron Poovey

JEWELRY

I am a lapidary and a metalsmith. I get inspired by the gemstones when I'm cutting them for jewelry. After the stones are cut I make settings for them. It's amazing to go from rough gems to jewelry.

408 Michael Place, Sebastopol
AaronSculpture.com



54

Fran Nielsen

PAINTING

As a self-taught artist, my work is characterized by a detailed style, using acrylic paint on gallery wrapped canvas. I seek to reach out to the viewer, drawing them into the depth of the painting.

8214 Covert Lane, Sebastopol
Facebook.com/PaintingsByFranG.Nielsen



60

Jim Veilleux

PAINTING

I like to think of my paintings as impressionistic snapshots of the world around me. Everyday I am impressed by God's work, and I am captivated by the light on the trees, the grass and the woods.

1140 Pleasant Hill Road, Sebastopol
RenaissanceMann.net



61A

Tom Ballard SCULPTURE

Free-standing welded steel sculpture, human scale. Steel wall sculpture in parts natural, painted, manipulated and formed. Welded steel art tables and bases with a touch of whimsy.

7626 Lynch Road, Sebastopol
TomBallardArt.com



61B

Maggie Ballard PAINTING

My plein air landscape paintings, figure paintings and drawings are done from live subjects. This approach inspires my best and deepest expression. Some paintings benefit from studio work as well.

Showing at
7626 Lynch Road, Sebastopol
MaggieBallardFineArt.com



62A

Joy Stocksdales FIBER ARTS

My main concern is design. Leaves, flowers and geometrics are sources of inspiration. The designs are printed on silk panels using polychromatic screen printing, then stiffened and cut.

919 Midpine Way, Sebastopol
JoyStocksdales.com



62B

Michael Ecton PHOTOGRAPHY

Nature, wildlife and Wine Country photography.

Showing at
919 Midpine Way, Sebastopol
WineCountryPhoto.com



64A

Rene Dayan-Whitehead SCULPTURE

Through stone sculpture, I work to bring the power of beauty into focus. To use the power of beauty to expand, heal, teach, comfort, and delight. To enlighten the mind and spirit, to invite the divine.

3520 Bloomfield Road, Sebastopol
ReneDayanWhiteheadStudio.com



64B

Jon Leafstedt PAINTING

On my small hillside acreage overlooking the Valley of the Moon in Sonoma, my passion is painting abstract California land and seascapes that uniquely capture the spirit of Sonoma County.

Showing at
3520 Bloomfield Road, Sebastopol
JonLeafstedt.com



65

Suki Diamond

CERAMICS

Table top dishes with hand painted animal motifs, tall totems, bird baths that add color and interest to a garden, wall sculptures, and fabulous lamps with shades made by Suki.

1237 Bing Tree Way, Sebastopol
SukiDiamond.com



66

Adrienne Momi

PRINTMAKING

Original poetry interpreted in relief printing and letterpress yields limited edition books to cherish and collect. "Silent Music," "Moments," and "The Uppity Girls Trilogy" will delight any viewer.

5870 McFarlane Road, Sebastopol
AdrienneMomi.com



67

Todd Loyal Rose

PAINTING

My oil paintings are surreal, conceptual, and visual exploitations of humanism using, at times satirically, the human figure, nature, lavishness, vanity, wine country, relationships, and art itself.

5440 Hutchinson Road, Sebastopol
ToddLoyalRose.com



68

Nichibei Potters

CERAMICS

Since 1985, Cheryl and Mikio have been making Japanese inspired, timeless, refined pottery in Sonoma County. Works include bowls, vases, lanterns, mugs, and exquisitely carved porcelain pieces.

1991 Burnside Road, Sebastopol
NichibeiPotters.com



70

Susan Proehl

PAINTING

Colorful abstracts using mixed media.

638 Sexton Road, Sebastopol
SusanProehl.com



71

Maya Miel

LEATHERCRAFT

Handmade leather goods, bags, small goods and custom handwelted boots and footwear.

1412 Freestone Flat Road, Sebastopol
MayaMiel.com



72 **Michelle Carnes**
PAINTING

Expressionistic oil paintings capturing movement, energy and atmosphere. Showing the *Deep Waters Series*: interacting with an aquatic world, and *Charming the Muse Series*: painting artists' stories.

1310 Windy Lane, Bodega Bay
MichelleCarnes.com



73A **Pamela Leotta-Wallace**
PAINTING

Light illuminates the subjects I'm compelled to paint in captured, joyful moments.

1530 Bay Flat Road, Bodega Bay
PamsArt.org



73B **PJ Kirk**
PAINTING

I'm devoted to art and deeply invested in the creative process. On a good day, I strike a balance between specificity and ambiguity, creating space for the viewer's imagination.

Showing at
1530 Bay Flat Road, Bodega Bay
PJKirk.com



74 **Holly Wallace**
GLASS

Glass+light=magic. Light is a primary participant in my lifelong exploration of glass. Glass art for table, home and garden is fused and formed in my home studio.

205 Keefe Avenue, Bodega Bay
HollyWallaceArt.com



75A **Lillian Lehman**
SCULPTURE

My art is about stories and an attempt to translate them into something three dimensional. I use clay, found objects and fabric to tell our common experiences as human beings.

225 Driftwood Avenue, Bodega Bay
FeetOfClaySculpture.com



75B **Cathy Beck**
PHOTOGRAPHY

My photography allows me to share the beauty and wonders of nature experienced while regularly hiking near my Bodega Bay home.

Showing at
225 Driftwood Avenue, Bodega Bay
CBeckPhoto.com



75C

John Hershey
PHOTOGRAPHY

Fine art photography of the Sonoma Coast. My passion is photographing with a visual journalist's eye. As a full-time resident of Bodega Bay, I am fortunate to live in such photogenic beauty.

Showing at
225 Driftwood Avenue, Bodega Bay
JHersheyPhoto.com



75D

Rakshika Thakor
PRINTMAKING

My art revolves around printmaking and textile art. Etching, wood and linocut, monotype, monoprint, collagraph, hand-dyed scarves, block print pillows and notecards.

Showing at
225 Driftwood Avenue, Bodega Bay



80A

Theresa Joyce
PAINTING

Whimsical garden-themed watercolor and acrylic paintings.

2502 Joy Road, Occidental
TwigArtAndGarden.com



80B

Rebecca Love
CERAMICS

Hand-built ceramics and life masks created in a tenth century design technique which involves carving and scratching to reveal the clay body and story upon it.

Showing at
2502 Joy Road, Occidental
RebeccaLoveSculpture.com



81

Charles Beck
PAINTING

Sonoma County landscapes.

3595 Joy Road, Occidental
ArtOfCharlesBeck.com



82A

Melissa McCann
GLASS

I feel joy when I see the colors of glass interact with light. To that end, this year I have focused more on garden art. I continue to make wall and table sculptures, functional art and jewelry.

4065 Acreage Lane, Sebastopol
MelissaGlassArt.com



82B **Beverly Bird**
PAINTING

Inspired by Sonoma's diverse natural beauty, Bird's work focuses on landscapes. Her paintings capture a special place in nature and time. Bird is member of the Upstairs Art Gallery.

Showing at
4065 Acreage Lane, Sebastopol
BeverlyBirdArt.com



83A **Dee Andreini**
PAINTING

Romantic Impressionism in oils and acrylics. Representational landscapes with an ethereal or atmospheric mood, plein air oils and abstract acrylics. Sonoma County inspired originals and giclees.

1990 Facendini Lane, Sebastopol
AndreiniGalleries.com



83B **Alison Morse**
JEWELRY

Hand-fabricated metal and gemstone jewelry.

Showing at
1990 Facendini Lane, Sebastopol
AlisonMorse.com



84 **Rik Olson**
PRINTMAKING

I work in three different printmaking mediums: wood engraving, linocut and mezzotint. I have been an artist all my life and have become very skilled at what I do.

12869 Occidental Road, Sebastopol
RikOlson.com



85 **Steve Forrest**
WOODWORKING

Decorative and functional woodturning, emphasizing form, figure, finish, and feel; bowls, vessels, platters, boxes and other objects made from local woods for everyday use and everyday beauty.

1900 Jonive Road, Sebastopol
SteveForrestWoodturning.com



86 **Peter Wolf**
CERAMICS

Exquisitely unique raku and stoneware.

1641 Furlong Road, Sebastopol



87

Caren Catterall

PRINTMAKING

Imaginative and mythic etchings, collagraph prints and encaustic. Drawing from the well of human experience, creating magical worlds to give us hope and wonder, telling the stories we need to hear.

11214 Occidental Road, Sebastopol
CarenCatterall.com



88

Amy Smith

FIBER ARTS

Handmade headwear. Using my extensive fiber arts background, I make all kinds of hats out of all kinds of materials. Straw for summer, felt for fall, fascinators, fedoras, berets. Commissions invited.

1076 Anita Lane, Sebastopol
FlyingColorStudios.com



89

Meghan Triscell

PAINTING

I use mixed media/oil in my paintings. I love to be surrounded by nature and I use its beauty for my inspiration, intertwining faces, nature and wildlife. Capturing the wild and free life of nature.

8604 Mill Station Road, Sebastopol
MeghanTriscell.com



90

Pat Engel

CERAMICS

Art for everyday use. Sgraffito decoration (incising through colored clay) is both fun to look at and creates a pleasing surface texture. I love hearing people say, "This is my new favorite mug!"

3156 Edison Street, Graton



91

Gina Kuta

CERAMICS

Presenting a range of wheel-thrown and hand-built functional pottery and sculptural ceramics made with a variety of clays, including native clay dug in Sonoma County. Wood, gas and electric fired works.

9000 Donald Street
(entrance on Bowen St), Graton
GinaKuta.com



92

Becky Wells

PAINTING

My work ranges from out of focus single images on canvas to panels filled with colorful altered plant forms. I paint in response to world events and my travels.

2860 Bowen Street #25, Graton
BeckyWellsArt.com



93

Elizabeth Peyton

DRAWING

Colored pencil, collage, watercolor and pen and ink depicting botanical subjects and imaginary landscapes. The work is the result of intense study of plant structure with a lifetime of practicing art.

2860 Bowen Street, Graton
HouseDrawingsToOrder.com



94

Linda Sorensen

PAINTING

My oil paintings explore boundaries of traditional painting and abstraction, including transcendental elements, with strong design and imaginative colors, emphatic line and altered/mixed perspective.

2860 Bowen Street #5, Graton
LindaSorensenPaintings.com



95

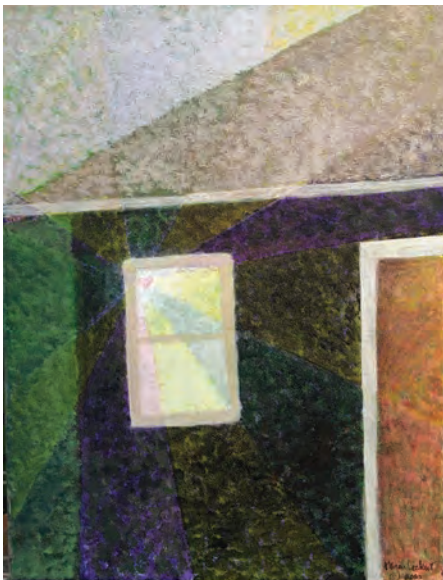


Nishi Marcus

PAINTING

Nishi Marcus, abstract artist, relishes process painting and draws inspiration from natural forces – in spirit of experimentation. A resident of Sebastopol, she is a traveler in time and space.

2860 Bowen Street Studio 8, Graton
PaintPilgrim.com



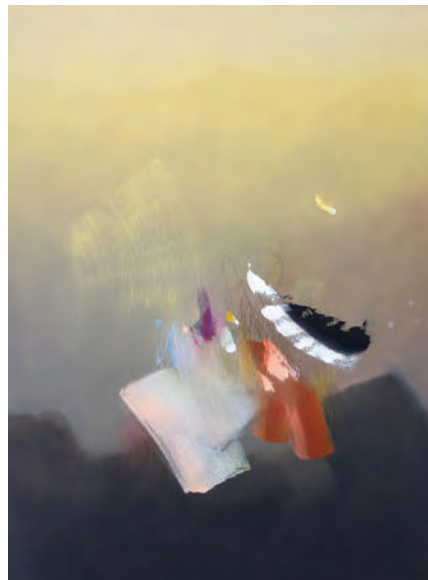
96

Karen Lockert

MIXED MEDIA

I hope to comfort the afflicted and afflict the comfortable through my mixed media work on the theme of "Returning Home."

2860 Bowen Street #18B, Graton
KarenLockertArt.com



97

Britta Kathmeyer

PAINTING

Abstract paintings in which the personal and political finds expression in form, color, and movement, as well as still lifes of bowls and vessels as metaphors for emotional states or current events.

2860 Bowen Street #20, Graton
BrittaKathmeyer.com



98

Lisa Beerntsen

PAINTING

(Primarily) abstract paintings influenced by the colors, shapes and spaces of nature (amongst other things), often blending the organic and the geometric.

2860 Bowen Street #18A, Graton



100

Branka Harris

GLASS

Fused glass: functional, sculptural glass art!

4815 Thomas Road, Sebastopol



107

Susan Bradford

PAINTING

I am mostly a plein air oil painter but also paint with acrylics and hot wax. I paint with three colors plus white and mix all my colors.

4130 Gravenstein Hwy N, Sebastopol
SusanBradfordPaintings.com



108A

Sally Baker

PAINTING

I paint sharp focus watercolor still lifes in which I endeavor to convey the intimacy I establish with my subjects. I use luscious colors to express my passion and capture the viewer's attention!

5990 Vine Hill School Road, Sebastopol
SallyBaker.com



108B

Mark J. Freed

GLASS

I fuse glass together to make sculptures, tableware such as platters and dishes, and dichroic glass jewelry. Glass is my favorite toy to play with, changing color and the color of things surrounding it.

Showing at
5990 Vine Hill School Road, Sebastopol
FreedGlass.com



108C

Shelley Rae

JEWELRY

Contemporary fine art jewelry. Semi-precious gemstones in gold and silver settings. Metal fabrication and wire wrapping techniques. Designs are contemporary interpretations of classical themes.

Showing at
5990 Vine Hill School Road, Sebastopol
www.ShelleyRaeStudio.com



108D

Pam Selvaraj

SCULPTURE

Natural and figurative clay sculpture with attitude. Look closely: each piece has history and a story to tell.

Showing at
5990 Vine Hill School Road, Sebastopol
PamSelvaraj.com



109A

Penny Knapp PAINTING

Watercolors, acrylics, and collages, emphasizing light, reflections and imagination.

22657 Sylvan Way, Monte Rio
PennyKnappWatercolors.com



109B

Doug Carmichael PAINTING

Impressionist between the eye and the object.

Showing at
22657 Sylvan Way, Monte Rio



110A

Sandra Maresca PAINTING

Colorful, impressionistic oil and watercolor paintings featuring landscapes and interiors, as well as narratives about people, animals, and the ways they interact. Also, unique fiber accessories.

16120 Watson Road, Guerneville
SandraMaresca.com



110B

Hal Bohner PAINTING

Landscape and abstract paintings in oils and watercolors.

Showing at
16120 Watson Road, Guerneville
HalBohnerArt.com



110C

Robin Mills PHOTOGRAPHY

I photograph to capture what can be lost by looking away: dynamic textures, saturated colors and light. I enjoy several types of photography from travel to nature and most everything in between.

Showing at
16120 Watson Road, Guerneville
RobinMillsPhotography.com



111

Barb Lawson PAINTING

Look and notice all the millions of moments of beauty that God put into our world. I paint and sell an impression of those moments in original floral and landscape watercolors – one at a time.

30 Marigold Lane, Forestville
BlawsonArtwork.com



112



Dean Orlosky

CERAMICS

Pottery inspired by traditional forms, focusing on vases, bowls and utilitarian vessels. Glazing reflects modern color studies and plays with bold geometric shapes. Each piece is created by hand.

1200 River Road, Studio H, Fulton
OakAndAnchorPottery.com



113



Robert Weiss

CERAMICS

High fire ceramics. Crystalline glazes along with Robert's newest discovery in growing 3D crystals on ceramic forms. Over 50 years of making pottery on display at Robert's studio and gallery.

2550 Jack Pine Road, Healdsburg
WeissLtd.com

4

PREVIEW EXHIBIT RECEPTIONS

MAY 20 | SEBASTOPOL

Sebastopol Center
for the Arts
2-4pm

MAY 5 + JUNE 2 | SANTA ROSA

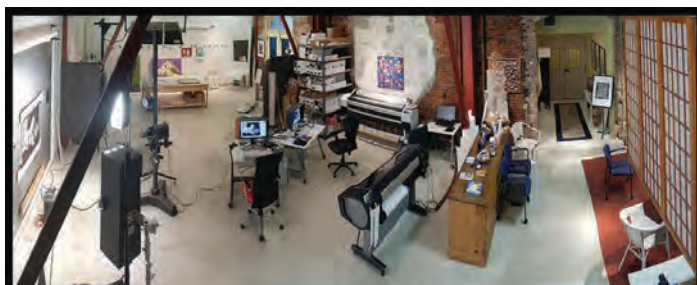
Corrick's/
My Daughter the Framer
5-7pm

MAY 6 | PETALUMA

Gallery One
4-6 pm

MAY 21 | BODEGA

Bodega Art Gallery
2-4pm



Digital Grange Fine Art Services

Studio & Location Photography
High Resolution Scanning
Custom Giclee Fine Art Printing
Stretching & Framing Services
ArtPak Protective Bags
Fine Art Prints on Aluminum
Illuminated Light Box Art
Competitive Pricing too!



707.778.2238 | www.digitalgrange.com

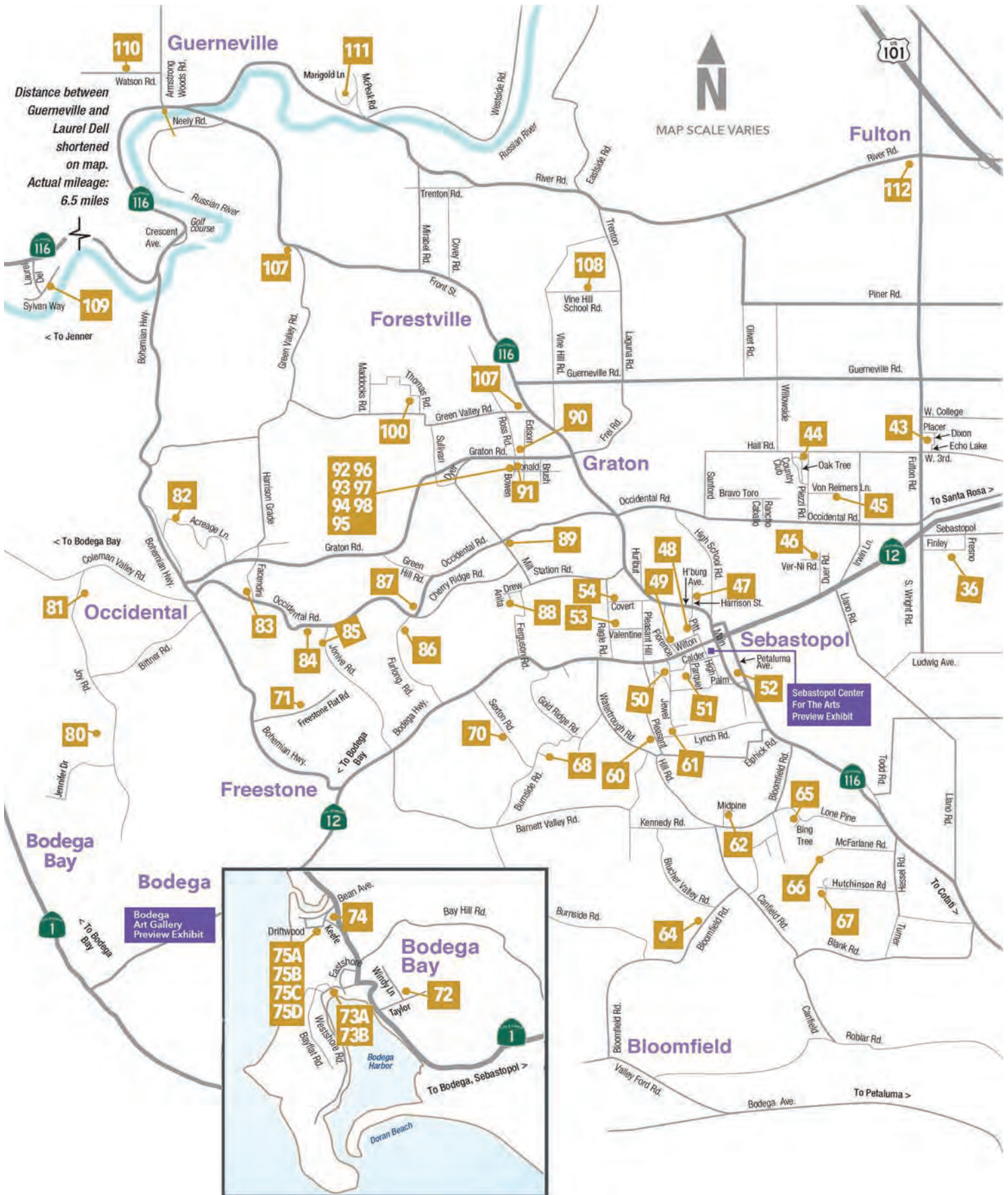
sonoma
eyeworks®

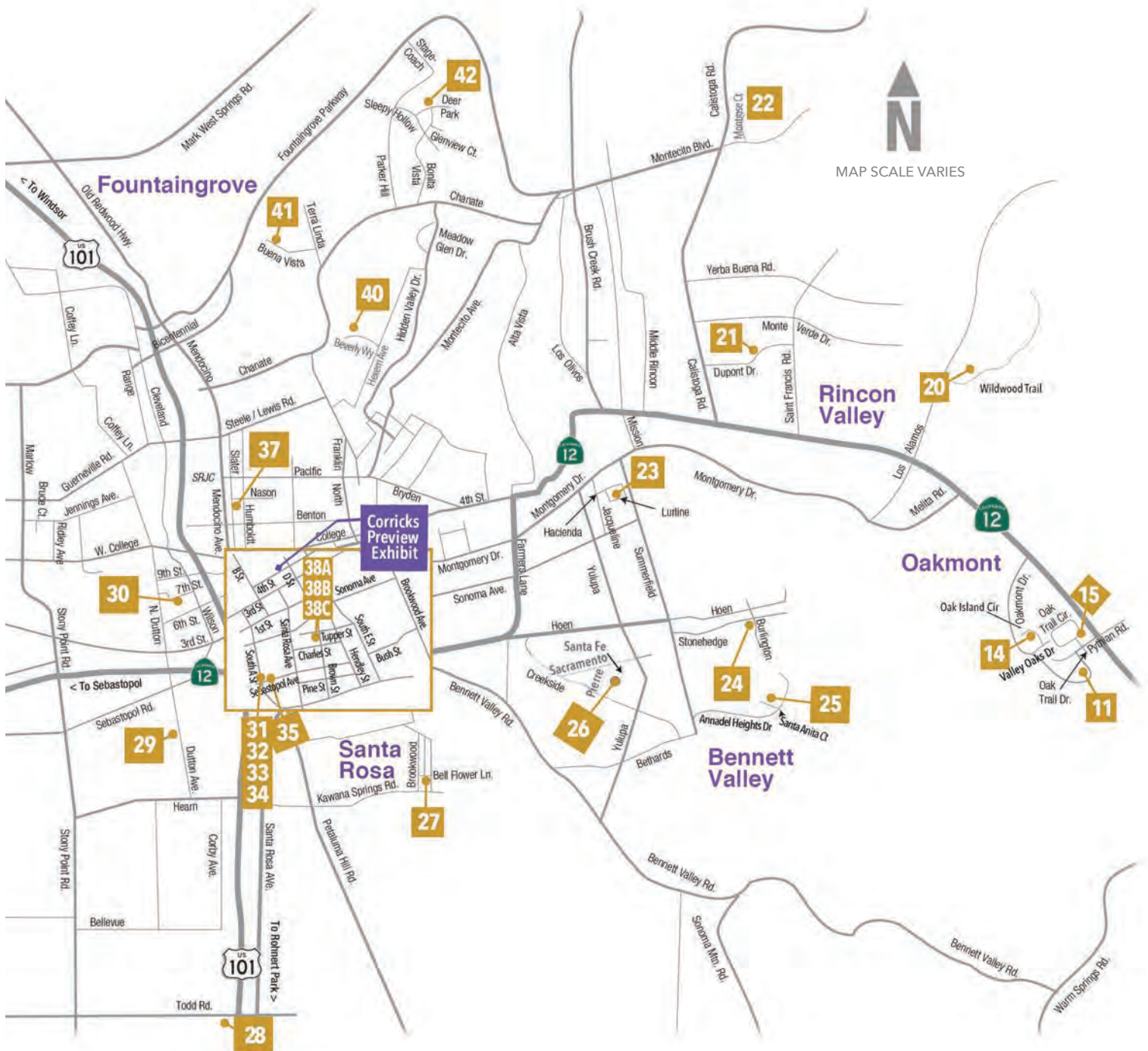


At Sonoma Eyeworks® you'll discover the
most unique collection of fashion eyewear
north of San Francisco.

534 Larkfield Center, Santa Rosa
707-578-2020 sonomaeyeworks.com

WEST





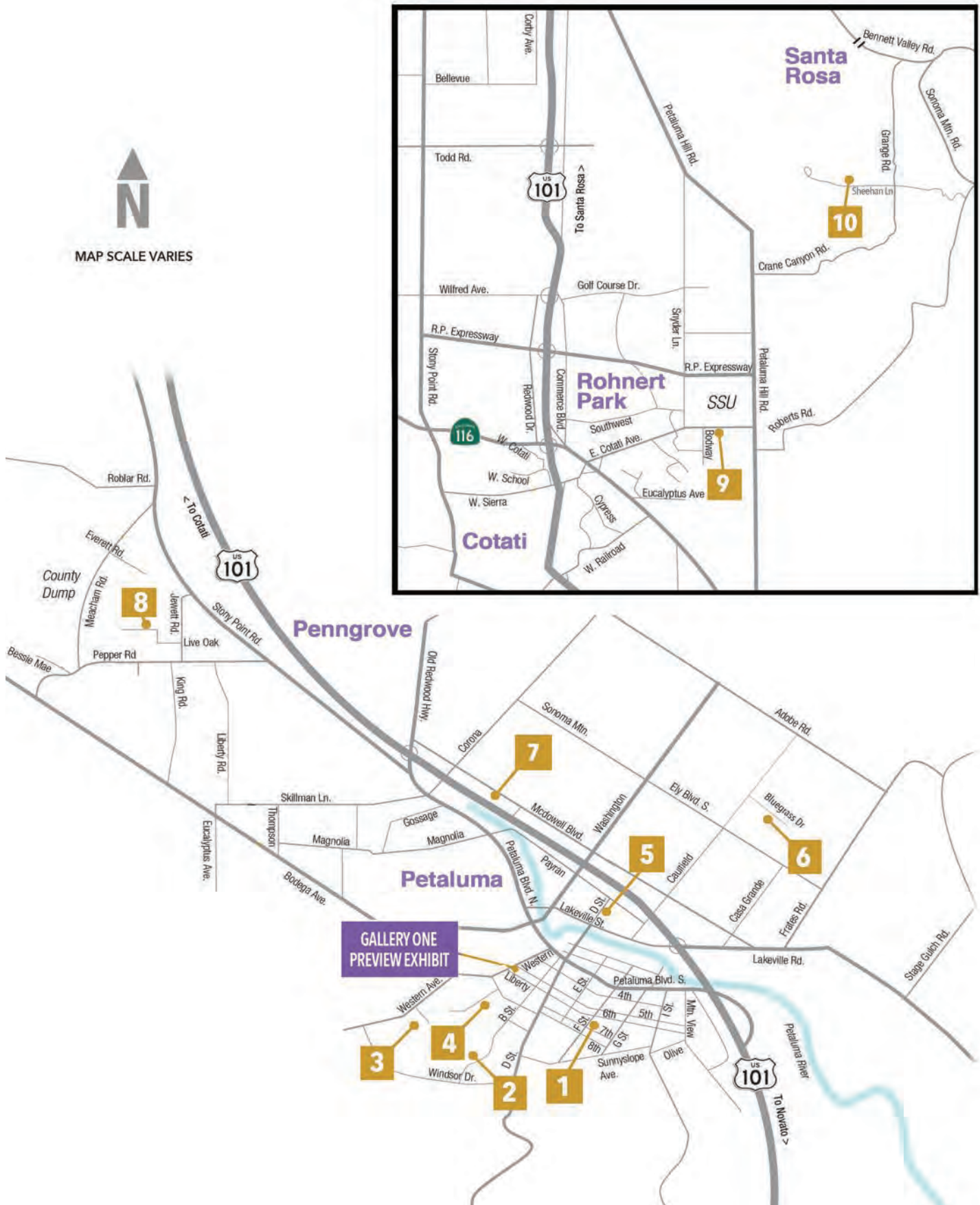
Due to Sonoma County's land span, the map scale is a general reference snapshot. To get more detailed directions, searching for listed studio addresses with GPS or Google Maps is recommended.

NORTH



Due to Sonoma County's land span, the map scale is a general reference snapshot. To get more detailed directions, searching for listed studio addresses with GPS or Google Maps is recommended.

SOUTH



ARTIST DIRECTORY*

Jenny Abramson 44D

(707) 953-6319
3510 Frei Road
Sebastopol, CA 95472
jenny@jennyabramson.com
IG: JennyAbramson

Valerie Adams 25A

(707) 539-4400
3018 Santa Anita Court
Santa Rosa, CA 95405
Valerie@ValerieAdamsGlass.com
IG: ValerieAdamsGlass

Don Ajello 26

(707) 696-6465
2257 Santa Fe Drive
Santa Rosa, CA 95405
ajellodonatello@hotmail.com
IG: ajellodonatellosculpture

Dee Andreini 83A

(707) 874-1649
1990 Facendini Lane
Sebastopol, CA 95472
dee@sonic.net
IG: DeeAndreini

Robert Ankers 30

(415) 218-2625
134 West 7th Street
Santa Rosa, CA 95401
bob@robertankers.com
IG: BobAnkers

Sally Baker 108A

(707) 829-0396
5990 Vine Hill School Road
Sebastopol, CA 95472
knsbaker@yahoo.com

Maggie Ballard 61B

(707) 829-3201
7626 Lynch Road
Sebastopol, CA 95472
maggieballard@yahoo.com

Tom Ballard 61A

(707) 396-1616
7626 Lynch Road
Sebastopol, CA 95472
balldu@pacbell.net
IG: TomBallardArt_Architecture

Cathy Beck 75B

(707) 331-5485
PO Box 503
Bodega Bay, CA 94923
cathy@cbeckphoto.com

Charles Beck 81

(707) 874-1678
3595 Joy Road
Occidental, CA 95465
chasbeck@sonic.net

Lisa Beerntsen 98

(707) 318-9918
lisabee@sonic.net
IG: LisaBeerntsenArt

Madeline Behrens-Brigham 38B

1080 Jennings Avenue #205
Santa Rosa, CA 95401
madelinebehrensbrigham@gmail.com
IG: MadelineBB19

Beverly Bird 82B

(707) 799-1490
PO Box 34
Rio Nido, CA 95471
bvdrio@sonic.net
IG: bvdrio

Hal Bohner 110B

(650) 784-1418
736 Keller Court
Petaluma, CA 94952
hbohner100@gmail.com

Julia Bombardier 44B

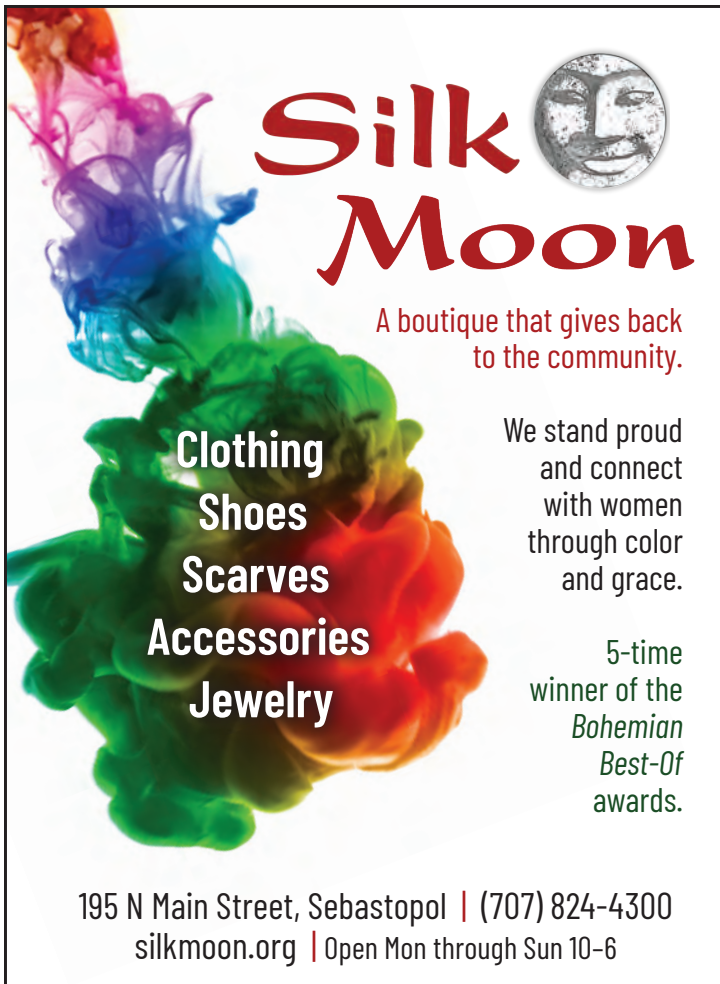
(707) 280-2338
1390 N. McDowell Blvd Suite G #208
Petaluma, CA 94954
jbomb.magicdoor@gmail.com

Lori Bowden 38C

653 Tupper Street
Santa Rosa, CA 95404
lori@aityi.com

Susan Bradford 107

(802) 371-8236
8800 Green Valley Road #41
Sebastopol, CA 95472
susanbradforddesigns@charter.net
IG: Susan.Bradford.509



Silk Moon

A boutique that gives back to the community.

Clothing
Shoes
Scarves
Accessories
Jewelry

We stand proud and connect with women through color and grace.

5-time winner of the *Bohemian Best-Of* awards.

195 N Main Street, Sebastopol | (707) 824-4300
silkmoon.org | Open Mon through Sun 10-6



HOPSCOTCH Gifts & Gallery

1200 River Road/101 Exit Fulton, CA Fri/Sat/Sun 11-4

Fun Gifts Cool Art



Lucy Liew *Magical California Flora & Fauna*

1200 River Rd, Fulton, CA | Fri-Sun 11-4 LucyLiewArt.com

THE ARTIST GROUP AT FULTON CROSSING



Lucy Liew



Julie Marie Hindley



Kay Young



Gale McKee



Jill Keller Peters



Beth Failor



J.D. Emerson



Oak & Anchor



Paula Strother



Robert Benson



Teresa Saluzzo



Lida Rebik



Laura Ames



Marina Hanson



Bill Gittins

LOCATED AT 1200 RIVER ROAD, FULTON, CA (101 EXIT) • OPEN 11-4 FRIDAY-SUNDAY

ARTIST DIRECTORY*

Deborah Butterfield 23

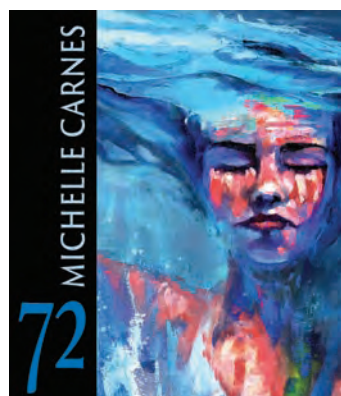
(707) 479-0847
3621 Lurline Way
Santa Rosa, CA 95405
debbie@exultationarts.com

Jeremy Calnan 52

568 Petaluma Avenue
Sebastopol, CA 95472
jeremycalnan.art@gmail.com
IG: JoyfulMonkArt

Doug Carmichael 109B

22657 Sylvan Way
Monte Rio, CA 95462



Michelle Carnes 72

(707) 824-2900
PO Box 950
Sebastopol, CA 95473
info@michellecarnes.com
IG: MichelleCarnesArt

Suzanne Carson 43

(707) 888-2083
683 Dixon Court
Santa Rosa, CA 95401
suzannecarson3@gmail.com
IG: SuzanneCarsonArt



Caren Catterall 87

(707) 869-3974
16100 Rio Nido Road
Guerneville, CA 95446
cc@carencatterall.com
IG: CarenCatterall

Marsha Connell 40

(707) 527-7754
2180 Beverly Way
Santa Rosa, CA 95404
marsha@marshaconnell.com
IG: MarshaConnellStudio

Rene Dayan-Whitehead 64A

(707) 829-9284
3520 Bloomfield Road
Sebastopol, CA 95472
rdwdbw@sbcglobal.net
IG: ReneSculpture

Suki Diamond 65

(707) 829-5519
1237 Bing Tree Way
Sebastopol, CA 95472
suki@sukidiamond.com

Lois Donaghey 37

(707) 217-3066
918 Slater Street
Santa Rosa, CA 95404
loisart@pacbell.net
IG: LoisDonaghey

Linda Donohue 7

(415) 577-5802
lindapdonohue@hotmail.com
IG: LindaDonohueArt

Michael Ecton 62B

(707) 529-8106
PO Box 1322
Sebastopol, CA 95473
winecountryphoto@msn.com

Suzanne Edminster 32

(707) 331-4740
312 South A St., Studio 6
Santa Rosa, CA 95401
saltworkstudio@gmail.com
IG: Saltworkstudio

Pat Engel 90

(707) 829-1710
PO Box 388
Graton, CA 95444
pat_engel@yahoo.com

Steve Forrest 85

(707) 953-8809
1900 Jonive Road
Sebastopol, CA 95472
steveforrestwoodturning@gmail.com
IG: SteveForrestWoodturning

*Mailing address may differ from studio address

Bruce Fossum 6

(707) 769-1769
811 Bluegrass Drive
Petaluma, CA 94954
bfossum@sonic.net

Mark J. Freed 108B

(707) 479-3818
2233 Hillside Drive
Santa Rosa, CA 95404
mfreed@sonic.net

Jane Garibaldi 44A

(707) 546-5397
268 Oak Tree Court
Santa Rosa, CA 95401
janegaribaldi@comcast.net

Deborah Haeffle 27

(408) 393-4484
2250 Nectarine Drive
Santa Rosa, CA 95404
deb@oilartist.com

Barbara A Harris 47A

(707) 326-6874
583 Harrison Street
Sebastopol, CA 95472
baharris@sonic.net
IG: BarbaraHarris_Designs

Branka Harris 100

(707) 332-8943
4815 Thomas Road
Sebastopol, CA 95472
brankaha@aol.com

David Harris 11

(707) 921-9116
8837 Oakmont Drive
Santa Rosa, CA 95409
dharris@harriskasten.com

Corrine Haverinen 31

(707) 206-5148
1011 Markham Place
Santa Rosa, CA 95401
info@have-art.net
IG: HaveArt

Stephen Heagan 47B

(707) 391-6426
sheagan@pacific.net

John Hershey 75C

(415) 279-9649
PO Box 477
Bodega Bay, CA 94923
hersheji@mac.com

Michelle Hoting 41A

(707) 791-4680
321 Buena Vista Drive
Santa Rosa, CA 95404
Michelle@MichelleHoting.com
IG: MichelleHoting

Karen Lynn Ingalls 34

(707) 332-7400
461 Sebastopol Avenue Studio I
Santa Rosa, CA 95401
kli@sonic.net

GRATON GALLERY

❁ CALIFORNIA FINE ART ❁

☎ 707.829.2912 ☎

www.GratonGallery.net

❁ Downtown Graton ❁ Open Thurs. Fri. Sat. & Sunday ❁ 11-4 ❁



Rene Dayan-Whitehead
Jon Leafstedt Studio #64

The advertisement for Bodega Art Gallery features a scenic landscape painting of rolling green hills and a winding river. A crow is depicted in flight, superimposed over a circular orange graphic. The text 'The Historic Town of Bodega' is at the top, followed by 'ART GALLERY' in a stylized font. Below this, it reads 'AN ESTABLISHED GALLERY WITH A NEW LOOK.' The name 'BODEGA ART GALLERY' is prominently displayed in large red letters. At the bottom, the gallery's hours and location are listed: 'OPEN 11AM - 7PM FRIDAY THROUGH MONDAY', '17255 Bodega Hwy, Bodega', and the website 'www.bodegaartgallery.com'.



- ✓ **FREE PARKING**
 - ✓ **CUSTOM FRAMING**
 - ✓ **EXPANDED INVENTORY**
- VISIT US AT OUR NEW LOCATION!**
755 Petaluma Ave.
Sebastopol, CA
707-824-4837

www.artandsoulsebastopol.com

SHARED ARTIST STUDIO CENTER

OPEN NOW! Memberships available
(Contact store for details)



Fun clothes for her...

Open Thursday thru Saturday
For all Shoppers 11 a.m. to 6 p.m.
Appointments Tuesday thru Saturday

Call today to schedule your personal shopping experience.
Call and leave a message at 707-823-1353.
Look for the bright yellow building on Main Street:
415 South Main St., Sebastopol, 95472

Theresa Joyce **80A**
(707) 874-3870
2502 Joy Road
Occidental, CA 95465
theresajoyce1@msn.com
IG: TwigArtAndGarden

Britta Kathmeyer **97**
brittka@sbcglobal.net
IG: BrittaKathmeyer

Sally Kent **41B**
(530) 520-4763
skpear01@gmail.com
IG: Felt_Illuminated

PJ Kirk **73B**
visual1bc@gmail.com
IG: PJKirk_Artist

Penny Knapp **109A**
(916) 799-5341
22657 Sylvan Way
Monte Rio, CA 95462
pkknapp@ucdavis.edu

Victoria A. Kochergin **45**
(707) 479-3336
602 Von Reimers Lane
Santa Rosa, CA 95401
kochergi@sonic.net

Peter M. Krohn **15**
(707) 508-8750
9409 Oak Trail Circle
Santa Rosa, CA 95409
pk@blessingsoftheearth.com

Katie Kruzic **29**
(707) 758-2587
1197 Dutton Avenue
Santa Rosa, CA 95407
katiekruzic@gmail.com

Lance Kuehne **1**
(707) 583-4631
lance@lancekuehne.com
IG: Lance_Kuehne

Gina Kuta **91**
mzbeehaven@att.net
IG: KutaPots

Julia Kwitchoff **38A**
(707) 529-9324
656 Tupper Street
Santa Rosa, CA 95404
juliakwitchoff@sbcglobal.net

Barb Lawson **111**
(707) 217-7321
30 Marigold Lane
Forestville, CA 95436
hi@blawsonartwork.com
IG: BlawsonArtwork

Jon Leafstedt **64B**
515 Cavedale Road
Sonoma, CA 95476
jsleafstedt@gmail.com
IG: JonLeafstedt_FineArt

Mary Neuer Lee **25B**
PO Box 131
Glen Ellen, CA 95442
maryneuerlee@gmail.com

Lillian Lehman 75A
(707) 875-3475
PO Box 416
Bodega Bay, CA 94923
lillian@feetofclaysculpture.com

Pamela Leotta-Wallace 73A
(707) 322-6775
PO Box 722
Bodega Bay, CA 94923
stellap12120z@gmail.com
IG: paleottawallace

Karen Lockert 96
(707) 820-1089
10709 Old River Road
Forestville, CA 95436
karenlockertart@gmail.com
IG: KarenLockertArt

Rebecca Love 80B
PO Box 483
Forestville, CA 95436
rebeccalovestudios@gmail.com
IG: RebeccaLoveSculpture

Diana Majumdar 8A
(707) 486-1132
150 Valley View Drive
Petaluma, CA 94952
diamaj@aol.com
IG: DianaMajumdar

Nishi Marcus 95
paintpilgrim@comcast.net

Sandra Maresca 110A
(707) 869-9419
P.O. Box 1593
Guerneville, CA 95446
croneclown@comcast.net

Alison Marks 3
(415) 235-3367
512 Melvin Street
Petaluma, CA 94952
alison@alimarks.com
IG: AliMarks

Christie Marks 33
(707) 695-1011
312 South A St. #7
Santa Rosa 95401
christie@christiemarksart.com
IG: Christie.Marks.Fine.Art.Studio

Melissa McCann 82A
(707) 874-9345
4065 Acreage Lane
Sebastopol, CA 95472
mm@melissaglassart.com

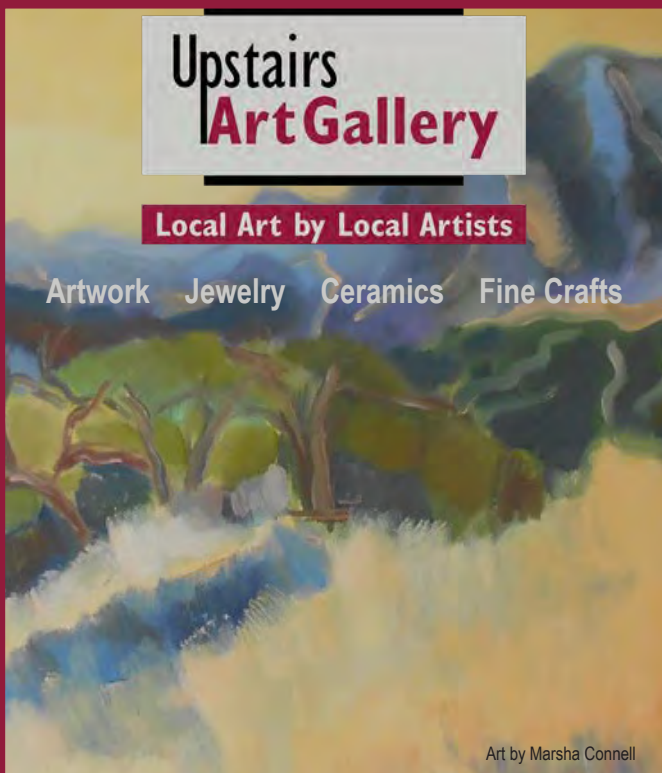
Roger McErlane 4
(949) 500-7910
419 Sheldon Street
Petaluma, CA 94952
rogermcerlane@mac.com

Maya Miel 71
mayamiel@gmail.com
IG: MeekerMade

Upstairs Art Gallery


Local Art by Local Artists

Artwork Jewelry Ceramics Fine Crafts




Art by Marsha Connell

306 Center Street, Healdsburg Plaza
Open Daily: 11AM-6PM (707) 431-4214
www.upstairsartgallery.net



ROBERT WEISS

Studio #113



Open year round
call Robert at
707-431-7550

Robert will explain
the Crystalline
growing process

50+ years experience

All wares will be
discounted 10% if you
mention this ad

2550 Jack Pine Road, Healdsburg
www.WeissLtd.com

ARTIST DIRECTORY*

Robin Mills (510) 853-5862 732 Keller Court Petaluma, CA 94952 robinmills1@mac.com	110C	Fran Nielsen (707) 823-3542 8214 Covert Lane Sebastopol, CA 95472 fgnielsen47@gmail.com	54	Aaron Poovey (707) 829-9848 408 Michael Place Sebastopol, CA 95472 aaronpoovey@comcast.net	53
Adrienne Momi (831) 332-1178 5870 McFarlane Road Sebastopol, CA 95472 adriennemomi@gmail.com IG: Adrienne-Momi	66	Rik Olson (707) 874-1299 12869 Occidental Road Sebastopol, CA 95472 rik@rikolson.com	84	Nichibei Potters (707) 823-0950 18991 Burnside Sebastopol, CA 95472 potters@nichibeipotters.com IG: NichibeiPotters	68
Bill Monaghan (916) 221-8595 136 Oak Island Circle Santa Rosa, CA 95409	14	Dean Orlosky (415) 613-7589 1200 River Road, Studio H Fulton, CA 95439 oakandanchorpottery@icloud.com IG: OakAndAnchorPottery	112	Susan Proehl (707) 824-9943 PO Box 1812 Sebastopol, CA 95473 susan@susanproehl.com IG: SusanHProehl	70
Gail Morgan 4816 Stonehedge Drive Santa Rosa, CA 95405 gailmmorgan27@gmail.com IG: Gail.Morgan.524	24A	Laura Parker (415) 596-4151 4715 Sheehan Lane Santa Rosa, CA 95404 lauraparkerstudio@gmail.com	10	Camille Przewodek (707) 762-4125 522 East D Street Petaluma, CA 94952 fineart@sonic.net IG: Przewodek	5
Alison Morse alimorse.jewelry@gmail.com IG: AliMorse.Jewelry	83B	Elizabeth Peyton (203) 470-4845 2369 Sophia Drive Santa Rosa, CA 95403 epeyton3@gmail.com IG: PeytonsPlaces	93	Shelley Rae (707) 503-9072 srae@sonic.net	108C
Gregory Nicholas (707) 861-9848 241 Florence Avenue Sebastopol, CA 95472	49B	Michael Pollare (707) 829-0716 120 Todd Road Santa Rosa, CA 95407 jpollare@comcast.net	28	Linda Loveland Reid 1730 E Cotati Avenue Penngrove, CA 94951 lindalreid100@gmail.com IG: LindaLReidArtist	9
Helen Nicholas (707) 861-9848 241 Florence Avenue Sebastopol, CA 95472 oldsilver@ltol.com	49A				

*Mailing address may differ from studio address

Patricia Reilly 35

patriciajane.reilly@gmail.com

IG: PatriciaJaneReillyJewelry

James Reynolds 51

(707) 829-3501

514 Parquet Street

Sebastopol, CA 95472

jamesreynolds@sonic.net

IG: JamesRReynolds1

Jennifer Robin 2

(707) 479-4027

6 Scenic Way

Petaluma, CA 94952

beauty@growingmorebeautiful.com

IG: JenniferRobinBeauty

Arthur Robinson 42B

(707) 387-5515

1007B West College Avenue #409

Santa Rosa, CA 95401

hawkridger99@yahoo.com

Todd Loyal Rose 67

(707) 217-6419

5440 Hutchinson Road

Sebastopol, CA 95472

toddloyalrose@gmail.com

IG: ToddLoyalRose.Art

Ann Rosmarin 20

(707) 978-3203

903 Wildwood Trail

Santa Rosa, CA 95409

contact@annrosmarin.com

IG: AnnRosmarinArtStudio

Mary J Ruggles 42

(707) 576-7060

3533 Deer Park Drive

Santa Rosa, CA 95404

rugbears@sbcglobal.net



DOVETAIL
COLLECTION
HEALDSBURG, CA

*Celebrating
American Handcraft Artists
since 2003*

CUSTOM HANDMADE FURNITURE BY CALIFORNIA ARTISTS

Incredible Quality!
Jewelry
Fine Art
Ceramics
Art Glass
Wood Turnings
Silk Scarves
Home Lighting
Arts & Crafts Rugs
and More!

407 Healdsburg Avenue
(one block North of the Plaza)
707-431-0111
SHOPDOVETAIL.COM

Open Thurs-Mon
Tues/Wed by Appt.

*Mailing address may differ from studio address

Don Jackson Wildlife & Landscape Photography

Meet-the-Artist
Opening Reception
June 3, 3-6pm

Open Daily
May 24-July 7

Sebastopol Library
7140 Bodega Avenue
Four art shows per year
www.donjackson.com



ARTIST DIRECTORY*

Terry Sauvé 22
(415) 867-8676
855 Montrose Court
Santa Rosa, CA 95409
terry@terrystauve.com
IG: Terry_Sauve

Francesca Scalpi 42C
(818) 522-5839
PO Box 99
Jenner, CA 95450
fscalpi@photography@gmail.com
IG: FScalpi

Barbara Schwartzberg 24B
4855 Hoen Avenue
Santa Rosa, CA 95405
edge.hill.pottery@gmail.com
IG: EdgeHillPottery

Anita Selinger 8B
(707) 578-4059
(707) 495-9112 cell
anita@anitaselinger.com

Pam Selvaraj 108D
pamselvaraj@gmail.com
pamselvaraj.com

Amy Smith 88
(707) 823-4287
1076 Anita Lane
Sebastopol, CA 95472
flyingcolorstudios@yahoo.com
IG: FlyingColorsStudios

Linda Sorensen 94
(707) 875-9284
PO Box 325
Bodega Bay, CA 94923
lindasorensen@earthlink.net

Joy Stocksedale 62A
(707) 829-1756
919 Midpine Way
Sebastopol, CA 95472
joystocks@comcast.net

Rakshika Thakor 75D
(707) 576-7153
4814 Skycrest Way
Santa Rosa, CA 95405
rakshikathakor@gmail.com

Meghan Triscell 89
(707) 337-5362
mtriscell@gmail.com
IG: MeghanTriscell

Luann Udell 36
(603) 352-2270
621 Brown Street
Santa Rosa, CA 95404
Luann@LuannUdell.com
IG: Luann_Udell

Jim Veilleux 60
(707) 481-9284
1140 Pleasant Hill Road
Sebastopol, CA 95472
veille6@aol.com



**SAVE
THE
CENTER!**

INVEST IN THE FUTURE OF ART

VOLUNTEER

JOIN

DONATE

SebARTS.org

EIP 2023 International Exhibition in Print

*If you're going to live, leave a legacy. Make a
mark on the world that can't be erased.*

Maya Angelou



SDA

www.surfacedesign.org

Lasting Impression

Call for Entry

Each year, SDA's EIP showcases the breadth and depth of contemporary artist and designers working with fiber and textile-based materials, methods, and techniques. **All artists in all media are encouraged to apply by May 15, 2023.**

*Mailing address may differ from studio address

Holly Wallace 74
205 Keefe Avenue
Bodega Bay, CA 94923
hollydaze3@icloud.com

Cathy Wayne 44C
(707) 495-1580
cathy@cathywayne.com
IG: Cathy_Wayne_Textiles

Robert Weiss 113
(707) 431-7550
2550 Jack Pine Road
Healdsburg, CA 95448
robert@weissltd.com

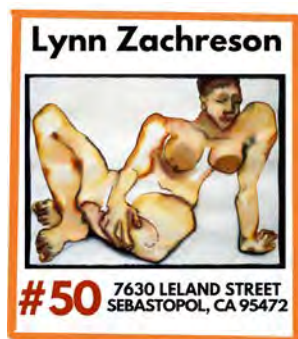


Myllette Welch 48
(707) 433-7581
222 Pitt Avenue
Sebastopol, CA 95472
mylettew@aol.com

Becky Wells 92
(707) 480-8398
rebeccagardens@comcast.net
IG: BeckBell123

Lenona Winter 46
(707) 623-7242
5577 Ver-Ni Road
Sebastopol, CA 95472
artist@lenonawinter.com

Peter Wolf 86
(707) 829-0776
1641 Furlong Road
Sebastopol, CA 95472
peterwolfdesign@comcast.net



Lynn Zachreson 50
(831) 419-1599
PO Box 124
Sebastopol, CA 95473
lynnz@cruzio.com

DWELLINGPOINT DESIGN



the art of
architecture & design

WWW.DWELLINGPOINT.COM

Art & Jewelry of Uncommon Beauty

la
Lori Austin Gallery
Contemporary Fine Art



105 Plaza St. | 725 Village Court | 6780 McKinley St.,
Healdsburg | Santa Rosa | #150, Sebastopol

loriaustingallery.com

*Mailing address may differ from studio address

ARTIST BY MEDIUM

CERAMICS

- 65 Suki Diamond
- 90 Pat Engel
- 91 Gina Kuta
- 80B Rebecca Love
- 49B Gregory Nicholas
- 49A Helen Nicholas
- 112 Dean Orlosky
- 68 Nichibei Potters
- 24B Barbara Schwartzberg
- 113 Robert Weiss
- 86 Peter Wolf

DRAWING

- 47B Stephen Heagan
- 45 Victoria A. Kochergin
- 10 Laura Parker
- 93 Elizabeth Peyton

FIBER ARTS

- 6 Bruce Fossum
- 41B Sally Kent
- 38A Julia Kwitchoff
- 88 Amy Smith
- 62A Joy Stocksdales
- 44C Cathy Wayne

GLASS

- 25A Valerie Adams
- 108B Mark J. Freed
- 100 Branka Harris
- 82A Melissa McCann
- 74 Holly Wallace

JEWELRY

- 44A Jane Garibaldi
- 47A Barbara A Harris
- 41A Michelle Hoting
- 25B Mary Neuer Lee
- 3 Alison Marks
- 83B Alison Morse
- 53 Aaron Poovey
- 108C Shelley Rae
- 35 Patricia Reilly
- 8B Anita Selinger

LEATHERCRAFT

- 71 Maya Miel

MIXED MEDIA

- 38B Madeline Behrens-Brigham
- 44B Julia Bombardier
- 38C Lori Bowden

- 23 Deborah Butterfield
- 96 Karen Lockert
- 8A Diana Majumdar
- 36 Luann Udell
- 33 Christie Marks

PAINTING

- 83A Dee Andreini
- 108A Sally Baker
- 61B Maggie Ballard
- 81 Charles Beck
- 98 Lisa Beerntsen
- 82B Beverly Bird
- 110B Hal Bohner
- 107 Susan Bradford
- 52 Jeremy Calnan
- 109B Doug Carmichael
- 72 Michelle Carnes
- 43 Suzanne Carson
- 40 Marsha Connell
- 37 Lois Donaghey
- 7 Linda Donohue
- 32 Suzanne Edminster
- 27 Deborah Haeffele
- 11 David Harris
- 31 Corrine Haverinen
- 34 Karen Lynn Ingalls
- 80A Theresa Joyce
- 97 Britta Kathmeyer
- 73B PJ Kirk
- 109A Penny Knapp

29 Katie Kruzic
 111 Barb Lawson
 64B Jon Leafstedt
 73A Pamela Leotta-Wallace
 95 Nishi Marcus
 33 Christie Marks
 110A Sandra Maresca
 4 Roger McErlane
 14 Bill Monaghan
 54 Fran Nielsen
 70 Susan Proehl
 5 Camille Przewodek
 9 Linda Loveland Reid
 51 James Reynolds
 2 Jennifer Robin
 67 Todd Loyal Rose
 20 Ann Rosmarin
 42 Mary J Ruggles
 22 Terry Sauvé
 94 Linda Sorensen
 89 Meghan Triscell
 60 Jim Veilleux
 48 Mylette Welch
 92 Becky Wells
 46 Lenona Winter
 50 Lynn Zachreson

PHOTOGRAPHY

44D Jenny Abramson
 75B Cathy Beck
 62B Michael Ecton
 75C John Hershey

15 Peter M. Krohn
 1 Lance Kuehne
 110C Robin Mills
 42C Francesca Scalpi

PRINTMAKING

87 Caren Catterall
 66 Adrienne Momi
 24A Gail Morgan
 84 Rik Olson
 75D Rakshika Thakor

SCULPTURE

26 Don Ajello
 30 Robert Ankers
 61A Tom Ballard
 64A Rene Dayan-Whitehead
 75A Lillian Lehman
 28 Michael Pollare
 108D Pam Selvaraj

WOODWORKING

85 Steve Forrest
 42B Arthur Robinson



GUSTAVE BAUMANN (1881-1971): "GRAND CANYON", COLOR WOODCUT, 1934

THE ANNEX GALLERIES

Offering a selection of over 7,500 original fine prints, drawings, and watercolors since 1971, ranging from Old Master to Contemporary works. We specialize in 20th century American Abstract Expressionist and Arts & Crafts artists.

604 COLLEGE AVE., SANTA ROSA / ANNEXGALLERIES.COM / (707) 546-7352
 TUESDAY THROUGH SATURDAY, 10 A.M. - 5 P.M. OR BY APPOINTMENT





Haeffele Fine Art #27
 2250 Nectarine Drive
 Santa Rosa, CA 95404
 (408) 393-4484/deb@oilartist.com
 OilArtist.com
 Appointments year round



Art@ at the Source

4

PREVIEW EXHIBIT RECEPTIONS

Join us
 As we showcase the

**2023 ART AT THE SOURCE
PARTICIPATING ARTISTS**

4 Opening Receptions throughout Sonoma County

Preview artists' work and map out
your open studios route

**MAY 20
SEBASTOPOL**

Sebastopol Center for the Arts
2-4pm

**MAY 5 + JUNE 2
SANTA ROSA**

Corrick's/My Daughter the Framer
5-7pm

**MAY 6
PETALUMA**

Gallery One
4-6 pm

**MAY 21
BODEGA**

Bodega Art Gallery
2-4pm



EXPRESSIONISTIC OILS FOCUSING ON MOOD, ATMOSPHERE AND MOVEMENT
SHOWING THE "DEEP WATERS" COASTAL SERIES" + "CHARMING THE MUSE" ARTIST SERIES

ORIGINAL OIL PAINTINGS | LIMITED EDITION PRINTS | COMMISSIONS



MICHELLECARNES.COM

72
OPEN
STUDIO

T W O
WEEKENDS
ONLY
JUNE 3/4 +
JUNE 10/11
10AM - 5PM

SEBASTOPOL
CENTER FOR THE ARTS

282 S. HIGH ST. | SEBASTOPOL, CA 95472
SebArts.org | 707.829.4797

NONPROFIT ORG.
U.S. POSTAGE
PAID
SEBASTOPOL, CA
PERMIT #114

Art@
at the Source

OPEN
STUDIOS
2023

2023 JUNE
3-4 & 10-11
10 am - 5 pm

ArtAtTheSource.org

PREVIEW EXHIBIT RECEPTIONS

MAY 20
SEBASTOPOL

Sebastopol Center
for the Arts
2-4pm

MAY 5 + JUNE 2
SANTA ROSA

Corrick's/
My Daughter the Framer
5-7pm

MAY 6
PETALUMA

Gallery
One
4-6 pm

MAY 21
BODEGA

Bodega Art
Gallery
2-4pm

THE SONOMA COUNTY
ART TRAILS

GALLERY AT

corrick's
est. 1915

**Art at the Source
COMMUNITY SHOWCASE**

MAY 5 - JUNE 24

with *First Friday* receptions:

- FRIDAY, MAY 5TH, 5-7^{PM}
- FRIDAY, JUNE 2ND, 5-7^{PM}

THE FRAMER

Sonoma County's
Premier Frame Shop
for Over 45 Years
707-542-3599
Now inside Corrick's
637 4th Street
Santa Rosa

Sally Baker



637 FOURTH ST | DOWNTOWN SANTA ROSA

Open Tuesday-Saturday, 10:30-5:00

707-546-2424 - www.corricks.com

Diana Majumdar
Painting & Mixed Media



Anita Selinger
Cloisonné Enamel Art Jewelry



Steven Forrest
Woodturning

