

KITCHEN AND BATH IDEAS

**Cabinetry
Buying
Guide**
p. 13

Start Fresh 17 Inspiring Looks

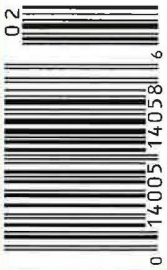
February 2011
Display until February 15
KitchenBathIdeas.com

\$5.99 U.S.

79 EXPERT TIPS:

- Stretch a small space
- Pair sinks and faucets
- Clear countertop clutter

One Kitchen, Two Budgets p. 42



in this issue

FEBRUARY

2011

features

48 FAMILY CENTRAL

As the hub of a busy home, this kitchen works hard with a casually elegant style.

56 COLORS OF THE COUNTRY

Antiques and repurposed materials give this colorful new kitchen a rustic look.

62 ELEGANT ENCORE

Two sinks in the island make it easy for the owners to cook and clean up simultaneously.

70 ALONG PARTY LINES

A local politician updates her 1940s Cape Cod-style home with a bright modern kitchen.

76 ARTISTIC INSIGHT

An artist designs a neutral kitchen that allows her artwork to shine.

82 DRAMATIC SOUL

This spacious kitchen takes center stage at family gatherings and formal dinner parties.

88 PIECE OF THE PIE

Dark contemporary cabinets contrast with light countertops and a shimmering backsplash tile.

94 WELL-ROUNDED

Graceful curves throughout this kitchen impart a warm, welcoming feel.

98 BACKSTORY AT THE FOREFRONT

Modern design blends with old-fashioned Low Country style in this one-of-a-kind kitchen.

104 GRAND ILLUSION

New cabinets expand a small kitchen's storage capabilities and elevate its traditional aesthetic.

110 TWICE AS NICE

A great example of design continuity, this kitchen and bath exude country French style.

120 JOIN THE CLUB

Inspired by a men's club, this distinguished bath is comfortable for the entire family.

124 SOOTHING ELEMENTS

A fireplace near a jetted tub makes for a bath that's truly an oasis of relaxation.

128 BICOASTAL BEAUTY

Beachy West Coast colors fuse with traditional East Coast style in a refreshing white bath.



Designed by homeowner and architect Jeff Goulette, this Shaker-inspired kitchen features salvaged wood beams and a random-laid slate floor with radiant heat.





colors of the country

Inspired by Shaker traditions, this bright and casual kitchen combines well-aged materials with a modern sensibility.

written by ANDRIA HAYDAY
photographer JAMES YOCHUM
field editor GISELA ROSE



OPPOSITE: The 36-inch enameled cast-iron range is a dual-fuel model with electric convection ovens. Mini subway tiles with a crackled glaze top the marble backsplash. **RIGHT:** Antique spoons and forks dangle from chandeliers handcrafted by artist Jose Esteves. The silver can be polished for extra sparkle. **BELOW:** The apron-front sink partners with two stainless-steel dishwasher drawers to handle loads large or small.



On summer nights, thousands of fireflies glitter in the fields, but it's the morning sun that really works the magic in this rural Michigan kitchen.

A band of windows wraps the southeast corner, capturing the light and pastoral views. "It's captivating," says Chicago-based architect Jeff Goulette, who designed the home he shares with wife Kelly McGrail. A porch shades the room in summer, but come winter, the sunlight reflects off the snow and floods the room. Meanwhile, feet stay cozy on the heated slate floor, and elbows rest easily on a wood-topped island that Jeff calls the center of the universe.

Inspired by Shaker farmsteads in New England, the home is a series of interconnected buildings. The kitchen is the nexus of the free-flowing plan, located off a foyer that resembles a breezeway. "It's a casual house, a country house," Jeff says. "We thought, *Why not walk directly into the kitchen?*"

Continuing in the traditional Shaker style, the interior millwork features simple pine bands that wrap windows and form a picture rail. White walls and a white-painted plank ceiling pair with colorful cabinets to brighten the space. "It's a little Shaker, a little Arts and Crafts," Jeff says. "We wanted a crisp, clean feeling with the warmth of wood, but nothing too cabin-y."

Salvaged materials add character, and they support an environmentally sensitive building strategy. A few examples: The century-old ceiling beams came from an



TAKEAWAYS

- 1 Wood beams, a slate floor, and antique pieces add to the rustic design.
- 2 Concentrating storage in the island and base cabinetry leaves wall space for windows.
- 3 The enameled cast-iron range sets the tone for the sunny color scheme.
- 4 A glaze tones down the bold green cabinetry and gives it an aged look.

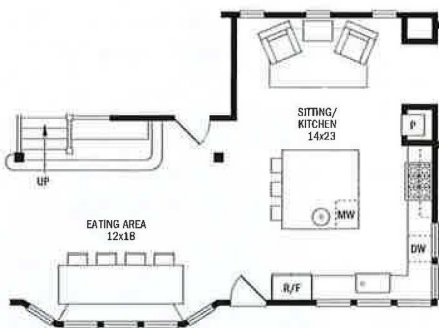
OPPOSITE: An antique farm table cozies up to a window seat in the dining area. Stretching 11½ feet, the table can seat up to 14 people. **LEFT:** These sleek range controls fire up five burners and three separate ovens, including a broiler compartment. **BELOW:** A microwave drawer tucks in the working side of the island. It's a good solution in a kitchen with very few overhead cabinets.

Ontario mattress factory, the island's 6-foot-square top is made of recycled white-oak planks, and virtually every cabinet or drawer features a unique piece of refurbished antique hardware. "We love the feeling of history and the patina of age these materials bring," Jeff says. "It was a lot of fun sorting through the choices."

The overall look echoes the past, but the layout is modern and so are the appliances—including the enameled cast-iron range. Unlike its old-fashioned English counterparts—which stay on continuously—this scaled-down range features an efficient dual-fuel system with electric convection ovens. Its cream finish drove the kitchen color scheme. "We made the island the same cream, then adjusted the green glaze on the other cabinets to make a nice contrast," Jeff says.

To balance the cost of the high-end range, the homeowners chose a more budget-friendly freestanding fridge. A wide, shallow built-in fridge wouldn't have worked anyway. "We didn't have a lot of wall space to work with," Jeff says. The deep fridge neatly punctuates the end of a cabinet run, defining the kitchen's boundary.

Like any good country house, this one is ruggedly casual. "We have one rule: Don't set a wet glass on the marble counter," Jeff says. "It leaves a ring." Otherwise, anything goes. The couple's Great Dane, Sophie, has free run of the house. "Toenails and mud can't hurt this floor." Visiting nieces and nephews, adult siblings, and friends—everyone can just kick back and relax. "This house is as comfortable for two as it is for 10 or 20," Jeff says. "It's an easygoing place." **KBI**



RESOURCES BEGIN ON PAGE 132.





DESIGN TIP

For a built-in look, cocoon a freestanding fridge with custom cabinetry. Leave clearance for door swing and ventilation.