

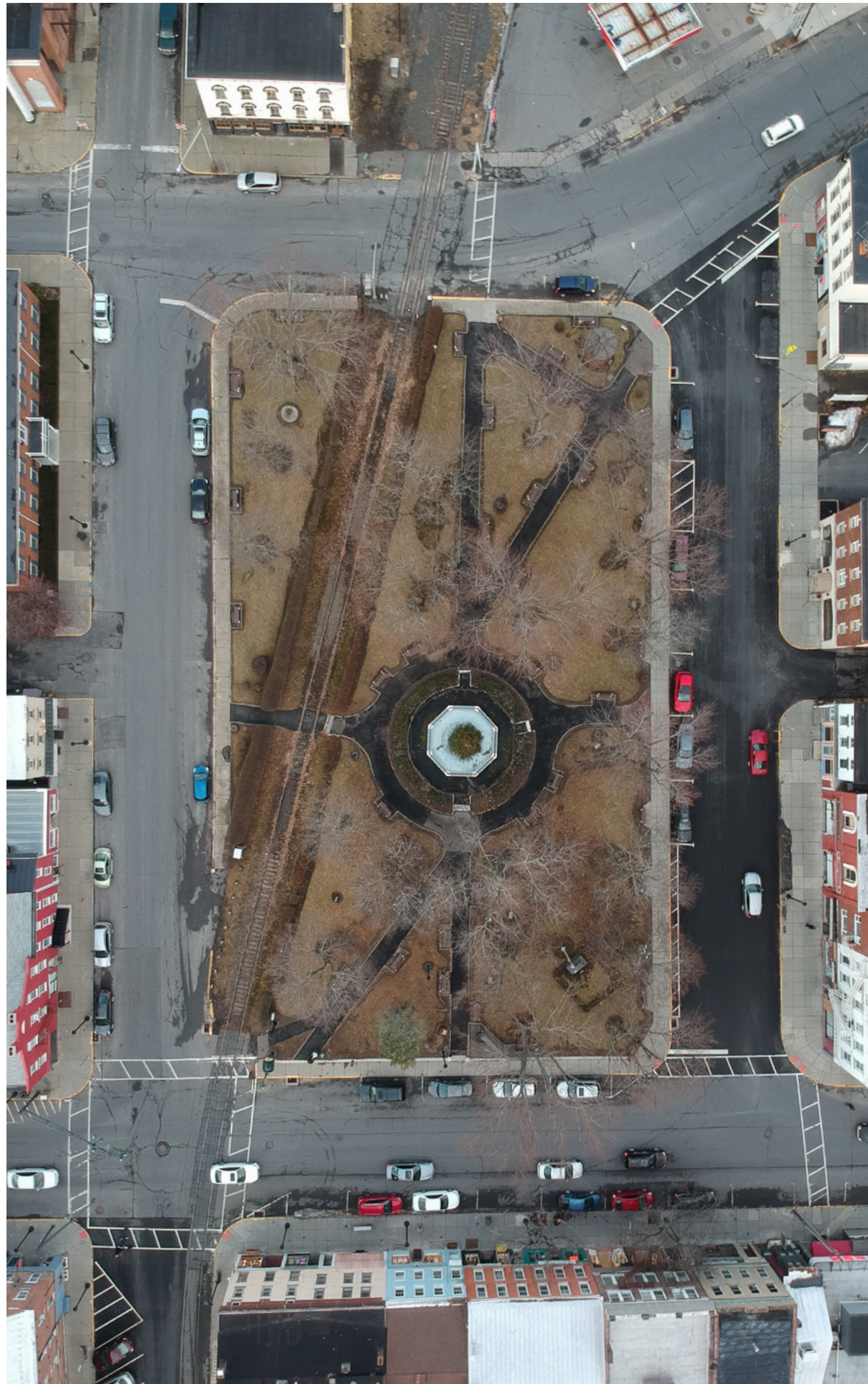


STARR WHITEHOUSE  
Landscape Architects  
and Planners PLLC

FRIENDS OF THE PUBLIC  
SQUARE HUDSON RFQ

Hudson, NY





*Aerial view of the Public Square in winter showing its underlying structure, 2019*

## STARR WHITEHOUSE

Landscape Architects  
and Planners PLLC

553 Warren Street  
Hudson, New York 12534

Friends of the Public Square Hudson  
76 Worth Avenue, Hudson NY, 12534

March 21, 2022

### Re: LANDSCAPE DESIGNER REQUEST FOR QUALIFICATIONS

Dear Friends of the Public Square Hudson,

Starr Whitehouse is honored to submit our proposal for the renovation of Hudson's Public Square, also known as the Seventh Street Park. The Square has long played an integral role in Hudson's public realm, dating back to the early 19th century. It is also our firm's neighborhood park, located only 500 feet from our office at 553 Warren Street. We share FOPS' enthusiasm and vision for the park: celebrating its history while embracing it as a vibrant, welcoming space for all in a contemporary, changing city.

The Public Square has weathered many eras its long history, with surprisingly little change to its underlying structure. We applaud FOPS' recent partnership with the City of Hudson in the efforts to reveal the park's buried potential through strategic improvements such as painting the benches dark green, removing the now-defunct fencing around the fountain and planting of spring bulbs. These small but significant interventions have also planted the seeds of stewardship, essential to the success of the park's renovation and ongoing care.

The challenges of updating a historic park for contemporary uses, while maintaining its original design intent and character, are embedded in the culture of Starr Whitehouse. Our leadership brings over 30 years in the restoration and reinvigoration of historic and iconic parks and landscapes in New York, such as Central Park, Riverside Park, The Battery, St. Mary's Park and Jones Beach State Park. As civic landscape architects and planners, we are excited to bring this experience to bear on the sensitive reclamation of the features that ground and define Public Square Park in the public imagination, while accommodating programming and activities which speak to the patrons of today and tomorrow. Starr Whitehouse will work alongside FOPS, the Mayor, local elected officials, business owners, preservationists, activists and other stakeholders alike to re-imagine how the space can continue offer new amenities to support Hudson's contemporary life while maintaining its underlying identity in the urban fabric.

This enhancement is dependent on a singular understanding: the Public Square is an integral part of Hudson's history and will continue to play a vital role in the City's future as the common green of its community. Starr Whitehouse is thrilled to offer our expertise and passion to help FOPS and the City celebrate the square's past while looking forward towards its future.

Sincerely,

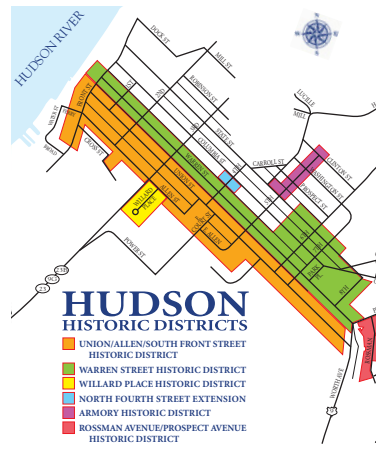
Gail Wittwer-Laird, RLA, ASLA, FAAR '96  
Director, Starr Whitehouse Hudson



## PROJECT UNDERSTANDING AND APPROACH

*View from above the  
Public Square looking  
Northeast*

2019



**PROJECT UNDERSTANDING**

Located within the Warren Street Historic District, the Public Square (also known as the 7th Street Park) is a cultural and social anchor for the City of Hudson. Over the past two centuries the Square has stood alongside the city as the city has evolved. Much of Hudson’s recent growth and reinvigoration, however, has not reached the park’s infrastructure or horticulture. FOPS seeks to usher in a new era in the daily life of the Square and the public realm it supports. Starr Whitehouse will support FOPS in this pursuit by bringing our local knowledge, design expertise in historic contexts, and decades of experience in community engagement to prepare a buildable and beautiful concept plan to garner support and leverage funding.



Above: Map of the Historic Districts of Hudson. The park is part of the Warren Street Historic District.

Below: Two teachers from the New York State Training School for Girls in front of the park’s fountain, view is looking north, 1934.

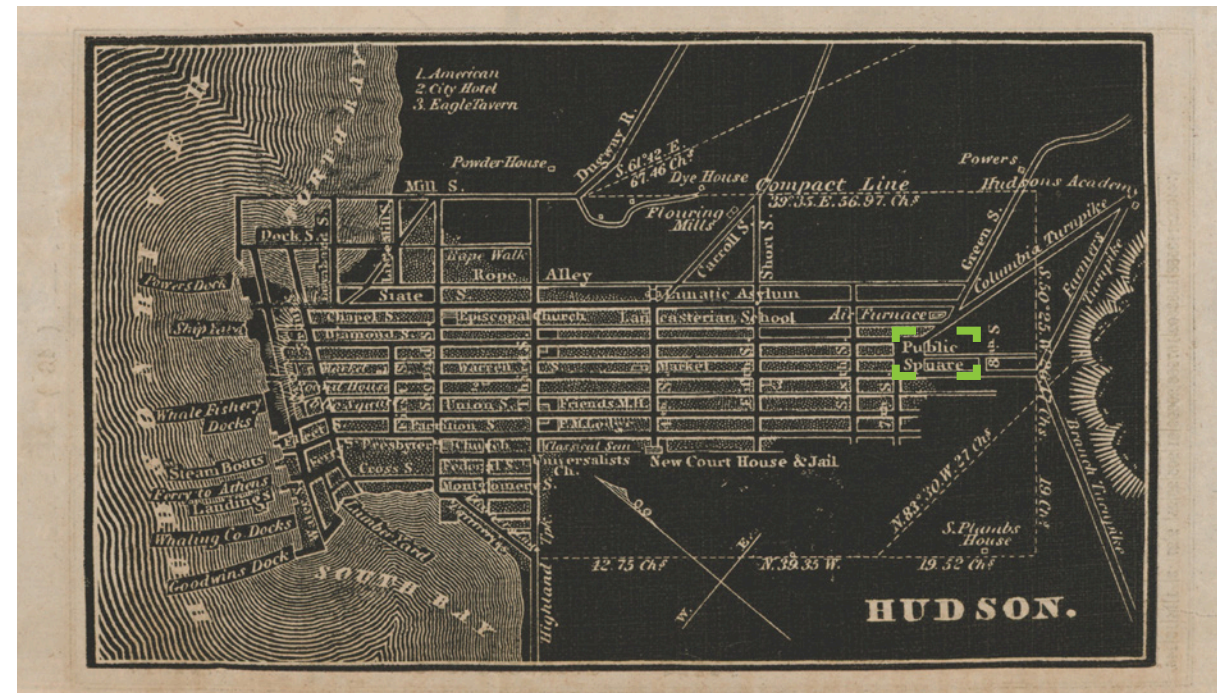
Photo courtesy of the Images Collections, Hudson Area Library History Room, Hudson, NY

Since the very early 1800’s, the park has served as a place to gather, and connect for the Hudson community. Most recently there was a community vigil for Ukraine. The Hudson Farmer’s Market has established a much-needed Wednesday event the past few seasons, and FOPS sponsored a musical kick-off of Winter Walk in 2021. These events bring people together and foster communal well-being.

The park is easily accessed by foot to many other important public institutions such as The Hudson Area Library, nearby Oakdale Park, as well as the future Bronson Park. The Public Square is key to Hudson’s ongoing regeneration, anchoring a cohesive network of cultural and historic sites that tie the city’s fabric together. Together with FOPS, we are excited to make the most of this potential and re-establish a high quality role of the Square in Hudson’s public life for the next century.

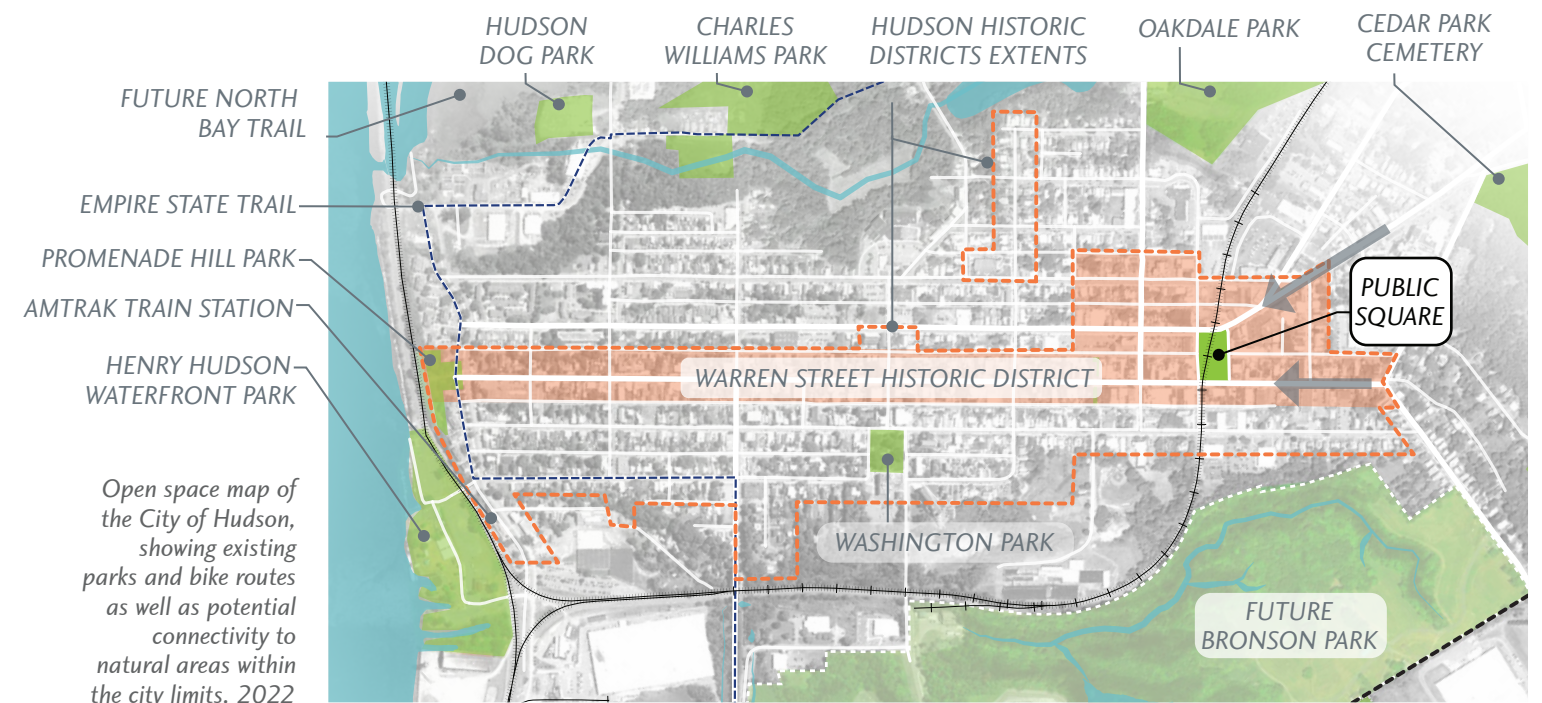
Balanced with the need to respond to the desires of contemporary programming is the critical goal of rediscovering its historic character and enhancing the elements that give the park identity for the community— notably, the park’s historic fountain, war memorial, flagpole, clock, and mature trees. Key to the success of the design process from the beginning

Map of the City of Hudson, 1838. Courtesy of the Images Collections, Hudson Area Library History Room, Hudson, NY



is understanding where there are real and immutable constraints (bedrock, mature trees, the railroad) and clear opportunities to pursue (improved circulation, accessibility, flexible gathering areas, fountain restoration, traffic calming, ecological benefit, increased connectivity). Fortunately, FOPS has already begun the first steps necessary to create a basemap for concept design development by commissioning an accurate topographic survey and performing a tree inventory. A successful concept design plan must acknowledge the boundaries of budget and technical feasibility, ranging from below-grade utilities to site drainage and lighting, to above ground desires of adjacent businesses and residents.

Essential first steps to the development of the concept design will be creating graphics that can be used in design discussions with stakeholders that combine aspiration and reality. The following is a summary of the of steps that Starr Whitehouse would follow while developing the early concept plans.



Open space map of the City of Hudson, showing existing parks and bike routes as well as potential connectivity to natural areas within the city limits, 2022

## PREPARE A SITE INVENTORY AND ANALYSIS

Preparing clear diagrams that illustrate the square's limits and potential is critical to the design process. These diagrams can be used in surveys and community engagement to keep discussions surrounding the concept design rooted within a feasible framework. Accurate inventories will establish a working design base for the concept plan. Features of this plan will include assessing the tree canopy for those trees that merit preservation and those that do not. Similarly these plans can be used to determine the extents of the existing lighting, utilities and any underground features that might influence what happens above. Establishing boundaries of the park that can or cannot be adjusted will also inform the process when exploring traffic calming and connectivity.

## ESTABLISH CLEAR GOALS SHARED BY STAKEHOLDERS

Preliminary goals will be formulated with FOPS and the City of Hudson and key stakeholder combined with ideas from the outreach already taken place. Some key goals may include:

- Strengthen the park's identity and boundaries
- Ensure the park is accessible to all ages and all abilities (ADA)
- Celebrate the park's History through sensitive renovation
- Create inclusive spaces for all community members
- Foster a new ecological framework through the creation of green infrastructure (drainage, sustainable materials and design)
- Establish the next layer of canopy trees, consider climate change
- Provide durable and maintainable site furnishings and pavements
- Prioritize pedestrian movement and safety
- Create a design palette including lasting and contextual materials
- Allow flexibility in programming and use



Above: The existing rail line that has transected the Square since 1837.

Below: On site community workshop with the Hudson Youth Group by Starr Whitehouse at Promenade Hill Park in the Fall of 2020.



## SUPPORT COMMUNITY PARTICIPATION

As we collectively imagine the Public Square's future, we see an opportunity to enhance open space equity in Hudson. By looking more broadly and more deeply, we can lead an inclusive community engagement process that recognizes a broad spectrum of need and reclaims a portion of the Public Square's original design intent. Planning and providing welcoming and responsive community engagement is a critical piece to making compact urban spaces serve a broad public. Starr Whitehouse specializes in making communities feel heard, included, and seen throughout the design process, generating public support and promoting the values of open space equity wherever we work. Our award-winning process is known for meeting constituents on their terms, using a variety of digital resources and in-person formats to engage residents in public fora, on their way to work, in the comfort of their living rooms, or on weekend tours of the community's ecological resources.

The goal of these efforts is always to put the tools of the designer into



"Peace Rally Public Square," Martin Baumgold, photographer, This photo is from A Gathering for Peace, Justice and a Reverence for Life, which has gathered in the park since late 2001 until the present day.

Photo courtesy of the Images Collections, Hudson Area Library History Room, Hudson, NY

the hands of the community, allowing residents to take meaningful part in the give and take of the design process and building broad consensus around a design direction that meets resident needs. Finally, it is crucial to bear in mind that the end goal of the current process is not just a design that enjoys public support, but also one that is capable of attracting grants and funding for implementation. This means that visualization and storytelling will be critical components of the final product, and that the design's role as a tool for funding must inform project decisions and resource allocation from the beginning.

## PHASING STRATEGY AND COSTING

The success of a conceptual design effort such as this one depends entirely on whether it ultimately results in a built project. To ensure that the design team's efforts are geared towards implementation from the beginning, we will devote particular focus to a phasing strategy, real-world cost estimating, and compelling graphics.

Starr Whitehouse will work hand in hand with FOPS and City officials to establish a working budget for the concept design that uses real-time construction costs and acknowledges available thresholds for the NYS CFA and potential federal funding. In addition to developing possible phasing and an overarching budget for the concept plan, Starr Whitehouse will identify the range of services that will be required for permitting and assembly of construction documents. In addition to landscape architectural plans, formulating the scope of work for a traffic engineer to test the feasibility of early concepts for possible park expansion is recommended. Separating curb and sidewalk work could also reveal additional sources of transportation or infrastructure funding. Our fountain engineer with Delta can provide clear guidance on the next steps and best practices for the mechanics needed for the preferred fountain design. Starr Whitehouse will format the estimates for inclusion in NYS grant applications.

## VISUAL DELIVERABLES

A compelling project narrative and graphics can generate excitement and attract funding. Starr Whitehouse's design studio uses a broad range of graphic technologies to build memorable visual narratives that help the audience place themselves mentally within a space and see its story long before it is built. We have included a samples of renderings and explanatory diagrams created by our studio throughout this proposal. For this concept design we propose the following deliverables:

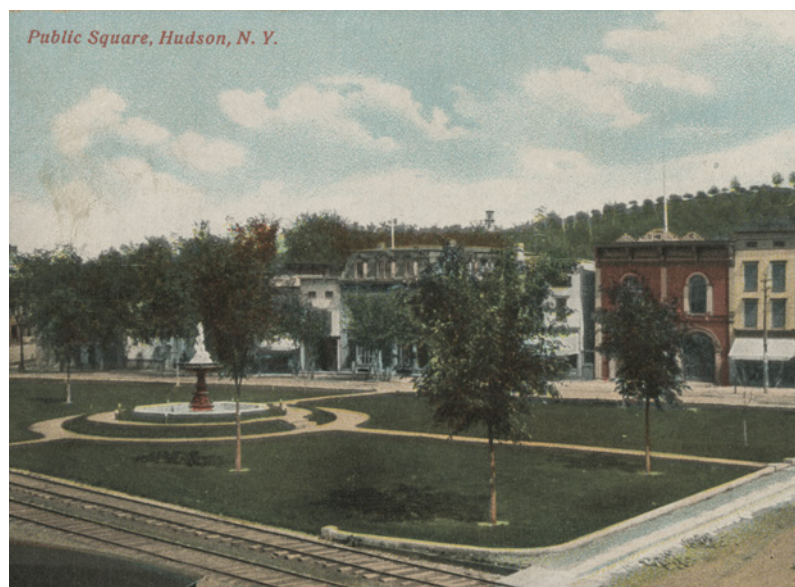
- Comprehensive Site Analysis/Opportunities & Constraints Diagrams



Above: The proportion of the existing benches doesn't fit everyone. 2022

Left: Vintage view looking northeast from Warren and 6th Street. Note the simplicity of the design with its open lawn panels, the central fountain and young American Elms. Image courtesy of the Images Collections, Hudson Area Library History Room, Hudson, NY

Below: Note the granite curbing, still visible just inside the sidewalk c. 1906



- Urban Context Diagram/Connectivity-Traffic Calming Extents
- 3-D Site model for use as a design tool and for final renderings
- Rendered Site Plan
- Rendered Site Sections (2)
- Rendered Views of Key Design Features (Fountain/Paths/Landscape)

## SUMMARY OF PROJECT GOALS

As our teams understands it, to be successful the current effort must meet four fundamental goals:

1. Strike an appropriate balance between new programming and the site's historic character
2. Work with FOPS and City officials on an open, inclusive outreach process that responds to community needs and builds public support
3. Create a compelling narrative and project visuals for use in applying for grants and attracting funding to turn the vision into reality
4. Provide accurate estimate of project funding needs for both soft costs for detailed construction documents and hard costs for implementation. Identify next steps and trades for a detailed design.



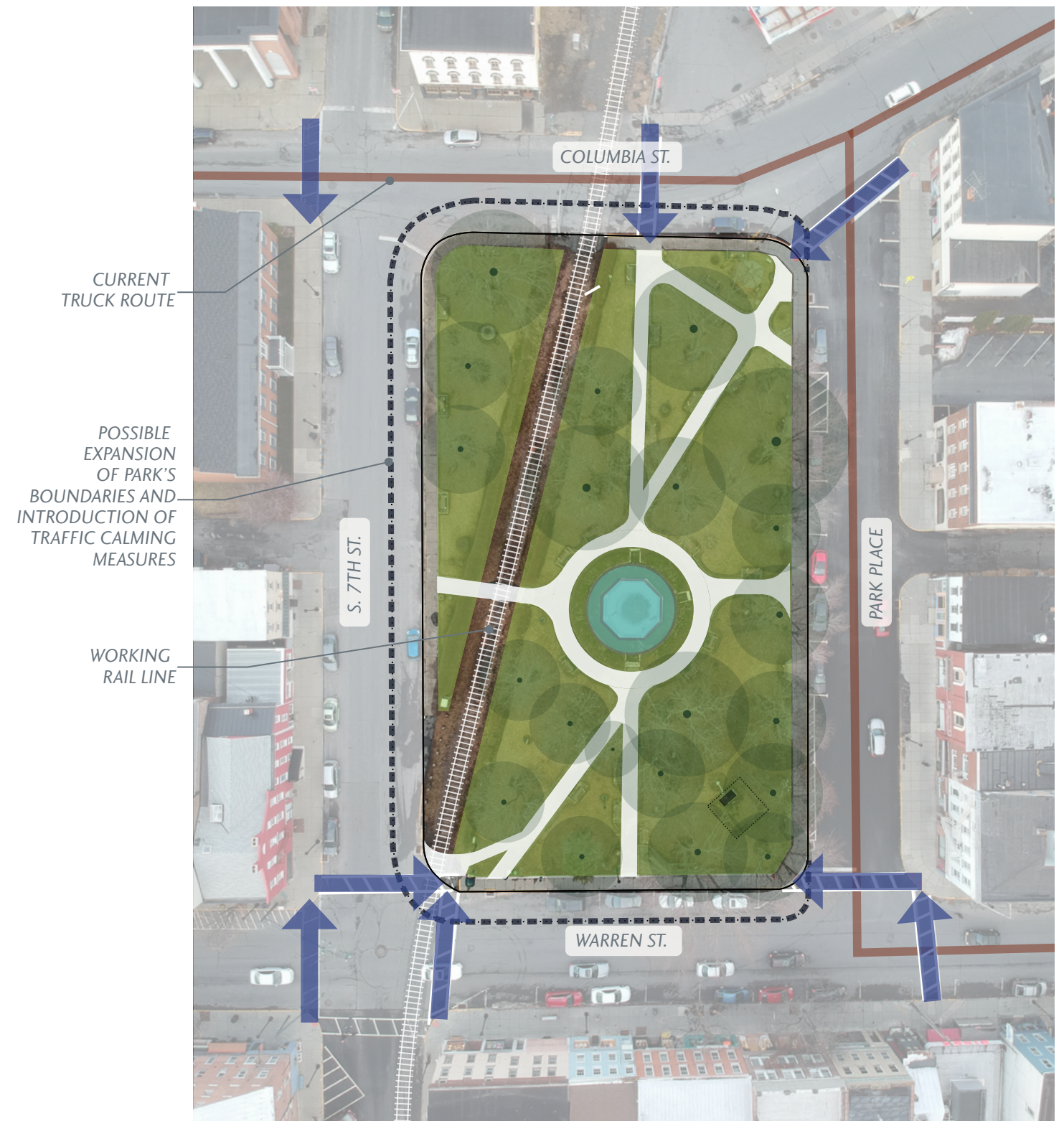
Above: View of the corner of Warren and 6th Street at the intersection with the active rail line.

Below: View southwest of existing park paths, 2022.



View north, Rowles Studio c. 1908

Photo courtesy of the images collections, Hudson Area Library History Room, Hudson, NY



Above: Diagram illustrating the park's underlying structure, tree canopy, surround vehicular and pedestrian circulation patterns and connections to the street grid.



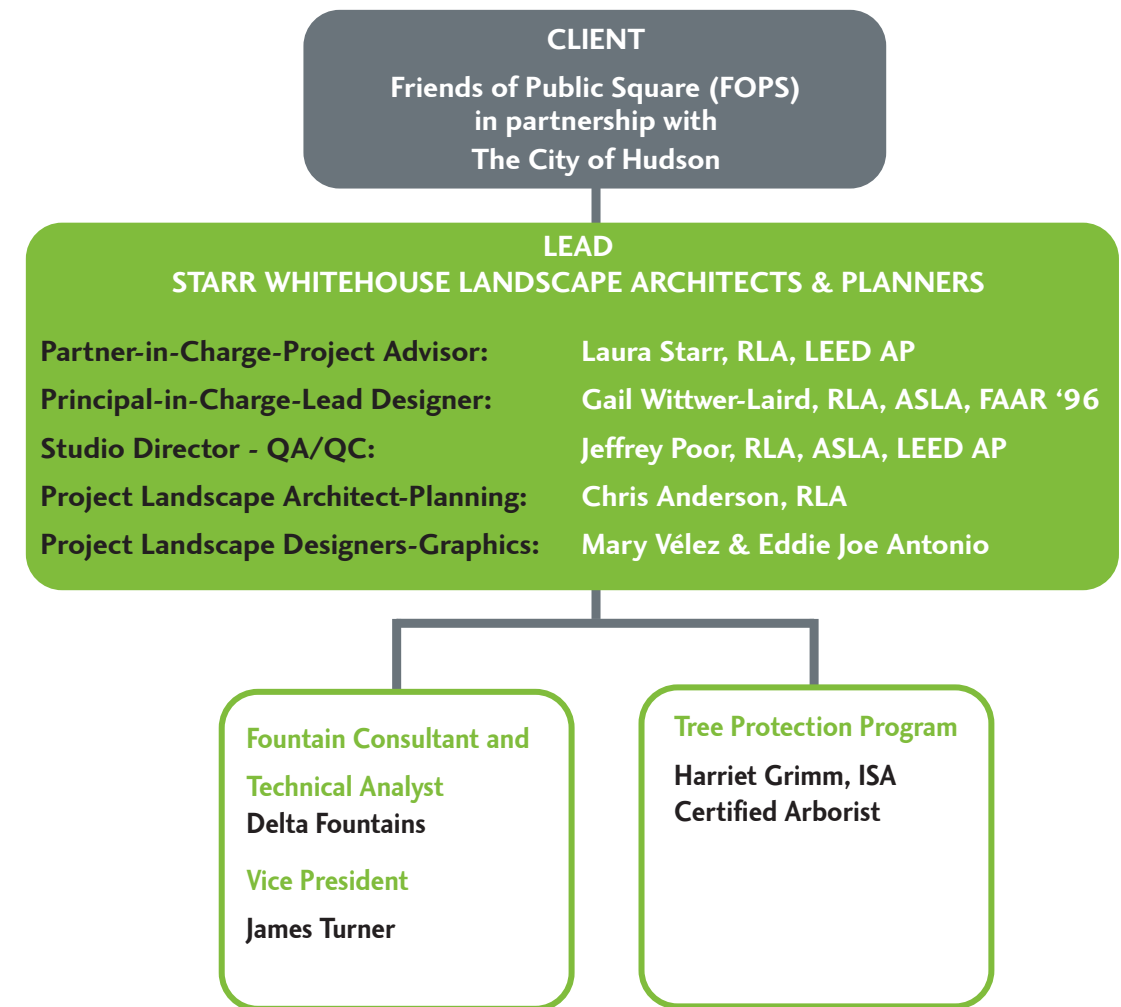


*A view of the existing fountain basin looking west, 2022*

## DESIGN TEAM



A view of the north south axis of the park, looking south, 2022



PUBLIC SQUARE CONCEPT DESIGN ESTIMATED FEE	
TASK	SUB-TOTAL
Task 1-Inventory & Analysis	\$5,000
Task 2-Community Engagement	\$8,000
Task 3-Concept Plans & Renderings	\$8,000
Task 4-Cost Estimating & Grant Support	\$2,500
Task 5-Technical Support & Fountain Feasibility	\$1,500
<b>ESTIMATED TOTAL</b>	<b>\$25,000</b>

## STARR WHITEHOUSE

Landscape Architects  
and Planners PLLC

### Education

Master in Landscape Architecture,  
University of Pennsylvania  
Bachelor in Architecture,  
Washington University

### Registration

Landscape Architecture, NY and NJ

### Affiliations

Fellow, American Society of Landscape  
Architects  
Board Member, Manhattan Community  
Board 1  
Member, CB1 Resiliency Taskforce  
President, American Society of  
Landscape Architects New York  
Chapter, 2012–2013

### Awards

Design Commission Award for Excellence  
in Design  
ASLA NY Chapter Honor Award (2015,  
2017)  
ASLA NY Chapter Merit Award (2006,  
2007, 2010, 2014, 2017, 2018)  
ASLA Honor Award (1998, 2016)  
ASLA Merit Award (1994)  
2014 Rebuild By Design Winner (\$335m)  
APA National Planning Excellence Award  
for Urban Design (2015)  
NY Metro APA William H. White Award  
(2014)  
Built by Women Award (BxW): 2015  
Holchim Silver Award for Sustainable  
Construction (2014)  
AIA-NY Award of Excellence (2009)  
The Waterfront Center's Excellence on the  
Water Award (2006)

### Publications/Speaking

"Making Density Livable," Skidmore  
Owings & Merrill, 2014  
"Working Internationally," NY Center for  
Architecture, 2014  
"Wild for the City: Creating & Sustaining  
Urban Nature," Rutgers University  
Landscape Architecture Spring Lecture  
Series, 2013  
"The Role of Design in Ecological  
Restoration," Metropolitan Waterfront  
Alliance, 2012

### Contact

Starr Whitehouse  
80 Broad St, Suite 1700  
New York, NY 10004  
t: 212.487.3272 ext. 101  
f: 212.487.3273  
lstarr@starrwhitehouse.com

## LAURA STARR, RLA, FASLA, LEED AP

Partner

### Professional Experience

With over 25 years' experience working in the New York City area, Landscape Architect Laura Starr is a local champion for sustainability, collaboration, and design excellence. As Chief of Design for the Central Park Conservancy, Starr worked intensively to forge consensus among diverse groups of stakeholders, renovating major destinations such as Harlem Meer, the West Side, and the Great Lawn. Entering the private sector, she collaborated on lauded landscape transformations exemplified by the Battery Upper Promenade, the award-winning designs for the Battery Bosque, and a pair of historic courtyards on Front Street at South Street Seaport. Starr's leadership was transformative for the ASLA-NY, which she led as president from 2013 to 2014. Under her guidance, the ASLA-NY built new relationships with professional organizations and the press, ran a successful fund-raising campaign to hire a full-time director, and rebranded itself into the optimistic, highly-connected, and urban organization it is today.

As a founding partner of Starr Whitehouse, Ms. Starr continues to nurture ties between the public, the city, and professional organizations. She has negotiated public/private partnerships both internationally, on master plans for Tel Aviv's Park Ariel Sharon and Gazelle Park in Jerusalem, as well as locally, collaborating with BIG Architects on the innovative VIA 57 West development, just one of a series of innovative housing developments that make density livable and high-quality housing affordable for thousands of New Yorkers. Ms. Starr has contributed significantly to Sandy recovery efforts through her work with the Special Initiative for Rebuilding and Resiliency, as the Landscape Architect on The BIG U, a winning Rebuild By Design team, and leading the East Harlem Resiliency Project. She has run numerous public outreach workshops that gather vital community feedback and build informed consensus around a series of implementable plans that refortify lower Manhattan while strengthening neighborhood identity, and as a member of Manhattan's Community Board 1, serves on the Board's resiliency taskforce. Today, Starr is seen as a leader in the field of sustainable landscape design and a strong advocate for a city that is greener and more responsive to the needs of a twenty-first century public.

### Current Assignments

#### Marsha P Johnson State Park, Brooklyn, NY

Partner-in-Charge; Est. Completion Date: 2024; Client Contact: Monica Martinez, NYS Office of Parks, Recreation, & Historic Preservation, 631.321.3502

#### Arverne Nature Preserve, Queens, NY

Partner-in-Charge; Est. Completion Date: 2022; Client Contact: Sara Levenson, L+M Development Partners, 212.233.0495

#### Halletts Point Waterfront Development, Queens, NY

Partner-in-Charge; Est. Completion Date: TBD; Client Contact: Eric Deuser, The Durst Organization, 212.257.6600

#### Nissequogue River State Park Master Plan, Kings Park, NY

Partner-in-Charge; Est. Completion Date: 2022; Client Contact: George Gorman, Regional Director, Long Island State Parks, 631.669.1000

#### St. Mary's Park Master Plan and Reconstruction, Bronx, NY

Partner-in-Charge; Est. Completion Date: 2022; Client Contact: Judi Raymond  
NYC Department of Parks & Recreation, 718.760.6795

## STARR WHITEHOUSE

Landscape Architects  
and Planners PLLC

### Education

Master in Landscape Architecture, Harvard  
University Graduate School of Design,  
Cambridge, MA  
Bachelor in Landscape Architecture,  
California Polytechnic State University,  
San Luis Obispo, CA  
Concentration in Urban Design, California  
State International Program, Florence,  
Italy

### Registration

Landscape Architecture, NY and CA

### Professional Organizations

Society of Fellows of the American  
Academy in Rome  
NYC Urban Forest Task Force  
American Society of Landscape Architects

### Honors and Awards

Public Design Commission Award for  
Excellence, Van Name Van Pelt Plaza,  
2016  
Village Society for Historic Preservation's  
Village Award, Bleecker Street Sitting,  
2012  
Public Design Commission Award for  
Excellence, Albert Capsuoto Park, 2007  
Rome Prize Fellow in Landscape  
Architecture, 1996  
Community Design Fellowship for The  
Parks Council, NYC, Harvard University  
Graduate School of Design, 1994

### Languages

English, Italian

### Contact

Starr Whitehouse  
533 Warren Street  
Hudson, NY 12534  
t: 212.487.3272 ext. 120  
f: 212.487.3273  
gwittwerlaird@starrwhitehouse.com

## GAIL WITTEWER-LAIRD, RLA, ASLA, FAAR '96

Principal & Director, Starr Whitehouse Hudson

### Professional Experience

With over 25 years of experience designing the public realm, Gail brings a wealth of public and private sector knowledge to the Starr Whitehouse team. Her 18-year tenure with New York City Parks began in 1997 as the Landscape Architect and Deputy Administrator for Riverside Park, followed by Director of Greenstreets in the Division of Forestry from 1999 to 2002, Senior Designer for Capital Projects from 2002 to 2010, and Senior Designer/Design Director for Staten Island Capital projects from 2011 to 2016. At Starr Whitehouse, Gail has led large-scale, multi-disciplinary projects for both public and private clients, including the renovation of the Brooklyn Bridge Esplanade for the NYC Economic Development Corporation, design guidelines and gateway implementation for New York State's Empire State Trail, and landscape design for multiple affordable housing campuses in the Bronx. In 2020, she opened a branch office (Starr Whitehouse's third) in Hudson New York, where she currently leads the the City's DRI-funded renovation of historic Promenade Hill Park and a new landscape vision plan for the historic Dr. Oliver Bronson House and Park.

### Current Assignments

#### Promenade Hill Park Universal Access and Plaza Redesign, Hudson, NY

Principal-in-Charge; Est. Completion Date: May 2022; Client Contact: Michael Hoffman, Mayoral Aide, City of Hudson, 518.828.7217

#### Nissequogue River State Park Master Plan, Kings Park, NY

Principal; Est. Completion Date: October 2022; Client Contact: George Gorman, Regional Director, Long Island State Parks, 631.669.1000

#### Manhattan Greenway Harlem River, New York, NY

Principal; Est. Completion Date Design : July 2022; Client Contact: Len Greco, Executive Vice President, NYC EDC, 212.312.3523

#### East River Brooklyn Bridge, New York, NY

Principal; Est. Completion Date Construction: Decembe 2023; Client Contact: Kathryn Prybylski, Vice President, Capital, 212.312.3968

#### Elmont Road Park, Elmont, NY

Principal-in-Charge; Est. Completion Date Construction: April 2022; Client Contact: David Curtis, New York Arena Partners, 516.667.2105

#### Bayard Cutting Arboretum, Great River, NY

Principal; Est. Completion Date: 2022; Client Contact: Victoria Frederico, NYS Office of Parks, Recreation & Historic Preservation, 631.321.3407

#### Forest Hills Housing Development Campus, Queens, NY

Principal; Est. Completion Date Construction : May 2022; Client Contact: Mitch Hartig, LEED GA, Curtis + Ginsberg, 212.634.1643

#### Lambert 5 Development, Bronx, NY

Principal; Est. Completion Date Construction 2023: Fall 2023; Client Contact: Michael Daniels, Dattner Architects, 212.247.2660

#### Compass Residences, Compass 6, Bronx, NY

Project Manager / Principal; Est. Completion Date Construction: Fall 2022; Client Contact: Zach Somsel-Longmore, 303.818.0136

## STARR WHITEHOUSE

Landscape Architects  
and Planners PLLC

### Education

Master in Landscape Architecture  
University of Pennsylvania  
Graduate School of Fine Arts, 1990  
Bachelor of Arts, Amherst College, 1982

### Registration

Landscape Architecture, New York  
LEED AP

### Professional Organizations/Affiliations

American Society of Landscape Architects

### Honors and Awards

ASLA NY, Honor Award, Southwest  
Resilience Park, 2020  
ASLA NY, Merit Award, Battery PlayScape,  
2020  
ASLA NY, Merit Award, E92nd Street  
Bonus Plaza, 2020  
U.S. Green Building Council NJ Chapter,  
Innovation and Sustainability Best  
Practices Award, Southwest Resilience  
Park, 2018  
Public Design Commission, Award for  
Design Excellence, Hamilton Fish Library,  
2018  
Metropolitan Waterfront Alliance, WEDG  
Certification, Starlight Park, 2017  
ASLA NY, Honor Award, VIA 57 West,  
2017  
ASLA NY, Merit Award, Battery Perimeter,  
2017  
ASLA NY, Merit Award, Compass  
Residences, 2016  
LEED Platinum Certification, Bushwick Inlet  
Park, 2015  
Design Commission Award for Excellence  
in Design, Cary Leeds Center for Tennis  
and Learning, 2015  
NYASLA Upstate Chapter Awards 2008  
Open Space Plan & Technology  
Quadrangle- Rensselaer Polytechnic  
Institute won Honor of Excellence  
Award for Unbuilt Design  
ASLA NY, Merit Award for Unbuilt Projects,  
Oyster Bay Railroad Museum Plaza,  
2008  
ASLA NY, Honor Award, Battery Bosque  
2006  
Waterfront Center, Award of Excellence,  
Battery Bosque 2006  
Municipal Arts Society Preservation Award  
DeKalb Branch, Library Reading Garden

### Contact

Starr Whitehouse  
80 Broad St, Suite 1700  
New York, NY 10004  
t. 212.487.3272 ext. 103  
f. 212.487.3273  
jpoor@starrwhitehouse.com

## JEFFREY S. POOR, RLA, ASLA, LEED AP

Principal/Studio Director

### Professional Experience

Jeffrey Poor brings more than 20 years of experience in the conceptualization, formulation and implementation of sustainable and compelling site design to Starr Whitehouse. His award-winning work spans a wide range of project scales and types, and consistently contributes creative solutions to the challenges faced in the implementation of sustainable design. Beginning with his work in New York's Central Park, Poor's interest in environmental, social and aesthetic considerations dovetailed neatly with the foundational design framework of the Greensward Plan. His work for the Central Park Conservancy emphasized the use of natural materials, native plant communities, and the creative treatment of stormwater. In projects such as the Great Lawn, Harlem Meer, North Meadow, and the Reconstruction of the West Side, Poor, in collaboration with Laura Starr, transformed the landscape and reinvigorated the Park's ideals of social and environmental stewardship through the implementation of sustainable design practices long before the term gained its present currency.

Such innovations have become a staple of Poor's career. For the Wildlife Conservation Society, Poor oversaw the design and implementation of an environmental restoration project along the Bronx River. The project restored portions of the riverbank, captured, detained and polished stormwater and implemented a graphic signage system explaining the hydrologic cycle as a public education resource.

As Principal and Studio Director at Starr Whitehouse, Poor plays a lead role in making the design team's vision a reality. His experience and technical mastery weave together diverse and often competing variables into fully integrated and innovative design solutions, resulting in successful and memorable spaces. His forward-thinking design with Stephen Whitehouse for the Bronx River House in Starlight Park employs landscape and horticultural strategies to mitigate heat loads through controlled evapotranspiration using a layered green wall. In another collaboration with Whitehouse, his DEP Maintenance Facility design introduces stormwater retention swales within the public right of way to capture and polish roof runoff for use in maintenance operations, an innovation that would later be incorporated into the DEP's manual of best practices.

### Current Assignments

#### Halletts Point Waterfront Development, Queens, NY

Principal; Est. Completion Date: TBD; Client Contact: Eric Deuser, The Durst Organization, 212.257.6600

#### Freshkills South Park, Staten Island, NY

Principal; Est. Completion Date: 2023; Client Contact: Andrew Deer, NYC Department of Parks & Recreation, 347.386.83483

#### Greenpoint Hospital, Brooklyn, NY

Principal; Est. Completion Date: 2025; Client Contact: Michael Ohlhausen, The Hudson Companies, 212.710.6033

#### NYPD 116th Precinct Station House, Queens, NY

Principal; Est. Completion Date: 2023; Client Contact: Gia Maniero, Dattner Architects, 212.589.7010

## STARR WHITEHOUSE

Landscape Architects  
and Planners PLLC

### Education

Master in Landscape Architecture, College  
of Environmental Science and Forestry,  
The State University of New York,  
Syracuse, NY, 2017  
Bachelor in Literary & Cultural Studies/  
Film, Cum Laude, College of William &  
Mary, Williamsburg, VA, 2009

### Registration

Landscape Architecture, NY

### Honors and Awards

National ASLA Student Honor Award,  
General Design, 2017  
LA Foundation University Olmsted Scholar,  
2017  
Honor Society of Sigma Lambda Alpha,  
2016-2017  
SUNY-ESF Aaron R. Vogel Scholarship for  
Land Protection, 2015

### Contact

Starr Whitehouse  
553 Warren Street  
Hudson, NY 12534  
80 Broad Street, Suite 1700  
New York, NY 10004  
m: 703.975.1820  
t: 212.487.3272 ext. 139  
f. 212.487.3273  
canderson@starrwhitehouse.com

## CHRIS ANDERSON, PLA

Landscape Architect

### Professional Experience

Chris Anderson was initially drawn to the practice of landscape architecture after several years working for the National Park Service, interning at the Gowanus Canal Conservancy, and volunteering at prominent urban parks such as Brooklyn Bidge Park and the High Line. At Starr Whitehouse, he has supplemented his passion for dynamic public open spaces with a deeper understanding of the complex multi-scalar components and processes contained within landscape projects of all types.

Both as a designer and project manager, Chris specializes in coordinating diverse groups of clients, stakeholders, consultants and design staff in efficiently moving projects forward. From overseeing the construction of a one-acre resilience park in Hoboken, to coordinating the re-design and reconstruction of 35-acre St. Mary's Park in the Bronx, to managing the completion of six new gateway plazas across New York State for the Empire State Trail, Chris has honed a versatile skill set geared toward addressing complex challenges, implementing creative solutions and delivering thoughtful, effective and well-loved spaces.

Since relocating to the Upper Hudson Valley in 2020, Chris has been active in establishing Starr Whitehouse's studio in Hudson, NY. There, he works with Gail Wittwer-Laird to help organizations and communities Upstate transform open spaces for the needs of a twenty-first century world.

### Current Assignments

#### Manhattan Greenway Harlem River, New York, NY

Principal; Est. Completion Date Design : July 2022; Client Contact: Len Greco, Executive Vice President, NYC EDC, 212.312.3523

#### St. Mary's Park Master Plan and Reconstruction, Bronx, NY

Landscape Architect; Est. Completion Date: 2022; Client Contact: Judi Raymund, NYC Department of Parks & Recreation, 718.760.6795

#### Promenade Hill Park Universal Access and Plaza Redesign, Hudson, NY

Landscape Architect; Est. Completion Date: 2022; Client Contact: Michael Hoffman, Mayoral Aide, City of Hudson, 518.828-7217

### Past Projects

NYS Parks Empire State Trail Gateways, Multiple Sites, New York State  
Bronson Park Vision, Hudson, NY  
Battery PlayScape, New York, NY  
Harlem Greenway Link, New York, NY  
Hoboken Southwest Park, Hoboken, NJ  
Bedford Green House, Bronx, NY  
Mill Brook Houses, Bronx, NY  
Cunningham Park Garage, Queens, NY  
Coney Island Affordable Housing Development, Brooklyn, NY  
Covenant House Young Adult Shelter, New York, NY  
StuyTown Fitness Playground, New York, NY  
Fresh Creek Coastal Resiliency, Brooklyn, NY  
Crossroads Development Plaza, Bronx, NY  
Woodstock Residence, Woodstock, NY

## STARR WHITEHOUSE

Landscape Architects  
and Planners PLLC

### Education

Master in Landscape Architecture,  
University of Virginia, 2019  
Bachelor in Environmental Studies,  
Colgate University 2016

### Contact

Starr Whitehouse  
80 Broad St, Suite 1700  
New York, NY 10004  
t: 212.487.3272 ext. 101  
f: 212.487.3273  
mvelez@starrwhitehouse.com



## MARY VÉLEZ

Landscape Designer

### Professional Experience

Mary has an innate desire to tell stories and build connections between people and the living things around them, a passion which led her to landscape architecture. Growing up on a farm with a lifelong love for reading, writing, and drawing, she has always been captivated by the small moments of beauty and wonder that inspire appreciation of the natural world—and she seeks to recreate these moments through the design of responsive and resilient public spaces. Mary joins Starr Whitehouse from Stimson Studio with two years of experience in private, institutional, and public planning and design. She brings a well-balanced intuitive and analytical approach informed by her background in environmental ethics. In graduate school, her research focused on the tools that landscape architects use to learn about sites and communicate the myriad histories, presents, and potential futures of a place. She develops these layers into graphic and narrative materials that convey the agency of sites and systems to stakeholders, clients, and design teams. Mary holds a Master's of Landscape Architecture from the University of Virginia and a Bachelor's in Environmental Studies from Colgate University, and has taught as a Lecturer at the University of Virginia MLA program. Her work has been exhibited at the University of Virginia, the Smithsonian, the Anchorage Museum, and has been published in Lunch journal.

### Current Assignments

#### Manhattan Greenway Harlem River, New York, NY

Landscape Designer; Est. Completion Date: 2026; Client Contact: Len Greco, Executive Vice President, NYC EDC, 212.312.3523

#### Nissequogue River State Park Master Plan, Kings Park, NY

Landscape Designer; Est. Completion Date: 2022; Client Contact: George Gorman, Regional Director, Long Island State Parks, 631.669.1000

### Past Projects

Brookline Residence Garden, Brookline, MA\*

Unified Vision for Downtown Providence, Providence, RI\*

Sapphire Farm, Sapphire, NC\*

Tivoli Preserve, Albany, New York\*

Lower Don Lands Master Plan, Toronto, Canada\*

A Gathering Place for Tulsa, Tulsa, OK\*

## STARR WHITEHOUSE

Landscape Architects  
and Planners PLLC

### Education

Bachelor of Arts in Architecture, Yale  
University, New Haven, CT, 2019

### Honors and Awards

F. Wilder Bellamy Jr. Award, 2019  
Parker Huang Undergraduate Travel Award,  
Mexico City, Mexico, 2019  
Caribbean Urbanism Research Fellowship,  
Havana, Cuba, 2017  
Thomas C. Barry Fellowship, Bogotá,  
Colombia, 2016

### Contact

Starr Whitehouse  
80 Broad Street, Suite 1700  
New York, NY 10004  
t: 212.487.3272  
f: 212.487.3273  
eantonio@starrwhitehouse.com



## EDDIE JOE ANTONIO

Junior Designer

### Professional Experience

Eddie Joe joined Starr Whitehouse after completing a year-long fellowship in Mexico City, where he apprenticed in a furniture design-build studio. Interested in craft, materiality, and the relationship of design to its cultural context, he is drawn to landscape architecture and its ability to synthesize these topics while addressing pressing social, ecological, and infrastructural issues. Prior to his work in Mexico, Eddie Joe graduated with honors from Yale University's undergraduate architecture major, where he played trumpet and founded the university's first salsa band. As a native Brooklynite, he is proud to be part of a team making a positive green impact in his city and beyond.

### Current Assignments

#### Nissequogue River State Park Master Plan, Kings Park, NY

Junior Designer; Est. Completion Date: 2022; Client Contact: George Gorman, Regional Director, Long Island State Parks, 631.669.1000

#### Halletts Point Waterfront Development, Queens, NY

Junior Designer; Est. Completion Date: TBD; Client Contact: Eric Deuser, The Durst Organization, 212.257.6600

#### Seaside Park & Community Arts Center, Brooklyn, NY

Junior Designer; Est. Completion Date: 2022; Client Contact: John Kubicko, iStar, 212.930.9400

#### Marsha P Johnson State Park, Brooklyn, NY

Junior Designer; Est. Completion Date: 2024; Client Contact: Monica Martinez, NYS Office of Parks, Recreation, & Historic Preservation, 631.321.3502

### Past Projects

Luna Corporate Plaza & Marketplace, Sao Paulo, Brazil

Harlem River Greenway, New York, NY

## STARR WHITEHOUSE

Landscape Architects  
and Planners PLLC

### Education

Master in Landscape Architecture,  
University of Pennsylvania, 1987  
Bachelor in Biology,  
New York University, 1980

### Registration

Landscape Architecture, NY and PA  
LEED AP  
Certified Arborist  
OSHA 10-hour Certification  
NYS DEC Certificate of Erosion and  
Sediment Control Training

### Professional Organizations/Affiliations

American Society of Landscape Architects  
International Society of Arboriculture

### Contact

Starr Whitehouse  
80 Broad St, Suite 1700  
New York, NY 10004  
t: 212.487.3272 ext. 101  
f: 212.487.3273  
hgrimm@starrwhitehouse.com



## HARRIET GRIMM, RLA, ASLA, LEED AP

Landscape Architect / Certified Arborist

### Professional Experience

Harriet Grimm is a registered landscape architect and certified arborist with three decades' experience designing, guiding and implementing complex multi-discipline projects. Her work has primarily focused on projects in the public realm, including parks, schools, streetscapes, roadways and infrastructure. She has deep knowledge of New York City and State agency design requirements, including bidding and construction procedures. As both a landscape architect and certified arborist, Harriet works to preserve and protect trees and other natural site assets during construction. She brings to each project a valuable understanding of sustaining natural systems in an urban context. At Starr Whitehouse, Harriet supports the design team with constructability and quality assurance reviews.

Prior to joining Starr Whitehouse, Harriet was a Senior Associate and Landscape Studio Director at Saratoga Associates' NYC Office, where she directed design and implementation of the award-winning Daylighting of the Saw Mill River in Yonkers, NY. She oversaw the preparation of the award-winning communications document for the Preliminary Re-design of Mosholu Parkway in the Bronx, and the design and implementation of 42 school play and outdoor educational facilities. Her work encompasses a full range of projects, including restoration of the Crown Hill Vista at the Olana State Historic Site, as well as design of a new parkway entrance to Niagara Falls State Park. Other public institutions, including the Queens Botanical Garden and the New York Botanical Garden, have entrusted her with reconstruction projects.

Previously, Harriet was an Associate Landscape Architect at Abel Bainnson Butz where her diverse portfolio included completion of projects for the NYS and NYC Departments of Transportation, NYC Department of Design and Construction; and NYC School Construction Authority. Notably, Harriet managed ABB's Landscape Inspection Services team, which monitored reconstruction of 300 parks and playgrounds for the NYC Parks Department over a five-year period. In addition to these experiences, Harriet maintains her own consulting practice.

### Current Assignments

#### Manhattan Greenway Harlem River, New York, NY

Landscape Architect; Est. Completion Date: 2026; Client Contact: Len Greco, Executive Vice President, NYC EDC, 212.312.3523

#### Vine Street Waterfront Development, Philadelphia, PA

Landscape Architect; Est. Completion Date: TBD; Client Contact: Jeffrey Aser, The Durst Organization, 212.257.6600

#### Queens Plaza Park Transit-Oriented Development, Queens, NY

Landscape Architect; Est. Completion Date: 2022; Client Contact: Madison Vitale, The Durst Organization, 212.257.6600

#### Bayard Cutting Arboretum, Great River, NY

Landscape Architect; Est. Completion Date: 2022; Client Contact: Victoria Frederico, NYS Office of Parks, Recreation & Historic Preservation, 631.321.3407

#### Freshkills South Park, Staten Island, NY

Landscape Architect; Est. Completion Date: 2023; Client Contact: Andrew Deer, NYC Department of Parks & Recreation, 347.386.8348



### Mr. James Turner, Project Manager

*James@Deltafountains.com*

#### Industry Experience:

20+ years

#### Education:

Bachelor of Science, Florida State University-Interior Design  
Autocad & Solid Works Certified  
Design Education and Mechanical Plumbing Experience

### Biography:

James Turner is Vice President of the organization. He is the head of the design department and is primarily responsible for the design, engineering, and estimating of the water features. James is personally involved in all stages of the design development from conception to final start-up of the feature and brings an extensive level of expertise in mechanical and electrical design. James has over 25 years of experience in designing water features. His education in design gives him a unique ability to cohesively integrate the necessary mechanical and electrical design requirements with the architectural elements and is an asset to the creative design process.

### Teaching Experience:

Various Technical Presentations, Research and Development Mock-Up, Developments and Presentations

### Prominent Projects:

**National September 11<sup>th</sup> Memorial and Museum – New York, NY**

**Curtis Hixon Riverfront Park – Tampa, FL**

**Pier 84-Hudson River Park Trust – New York, NY**

**Citibank Headquarters, New York, NY**

**Apple 5<sup>th</sup> Avenue, New York, NY**

**Memorial for Peace and Justice, Montgomery, AL**

**Schermerhorn Symphony Center, Nashville, TN**

**The Legacy Museum/EJI, Montgomery, AL**

Curtis Hixon Riverfront Park:



Hopkins Plaza Renovation:



Visit our website at [www.deltafountains.com](http://www.deltafountains.com)

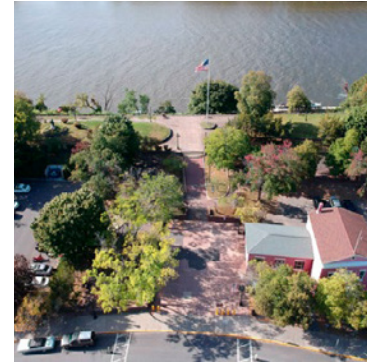


*View of Warren Street  
from within the park,  
2022*

## REPRESENTATIVE PROJECTS

**STARR WHITEHOUSE**  
Landscape Architects  
and Planners PLLC

**PROMENADE HILL PARK RECONSTRUCTION & PLAZA REDESIGN**  
City of Hudson  
Hudson, New York



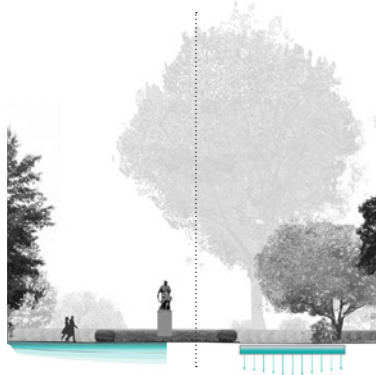
Starr Whitehouse is leading the DRI-funded reconstruction of Hudson's historic Promenade Hill Park. Engaging the community in socially-distanced workshops, our team developed strategies to make the promenade universally accessible, while carving out new programming and social spaces in one of the nation's oldest public parks. Gently-sloped paths sweep along the park's southern boundary, opening up the promenade to wheelchair access while avoiding critical root zones of existing trees. Set within the "oxbow" of these paths, expanded lawn areas add space for picnicking and gathering. A range of new programming clustered around the redesigned plaza expands activities in the park, including, adding tables for picnicking, stone slab seating, and a whale-themed spray shower for local children to play in on hot summer days. Starr Whitehouse is currently guiding the new design through construction.



Above: An aerial view of the existing plaza, steps, and promenade overlooking the Hudson River.

Below: New universally-accessible paths and sloped lawn areas lead visitors up to the historic promenade.

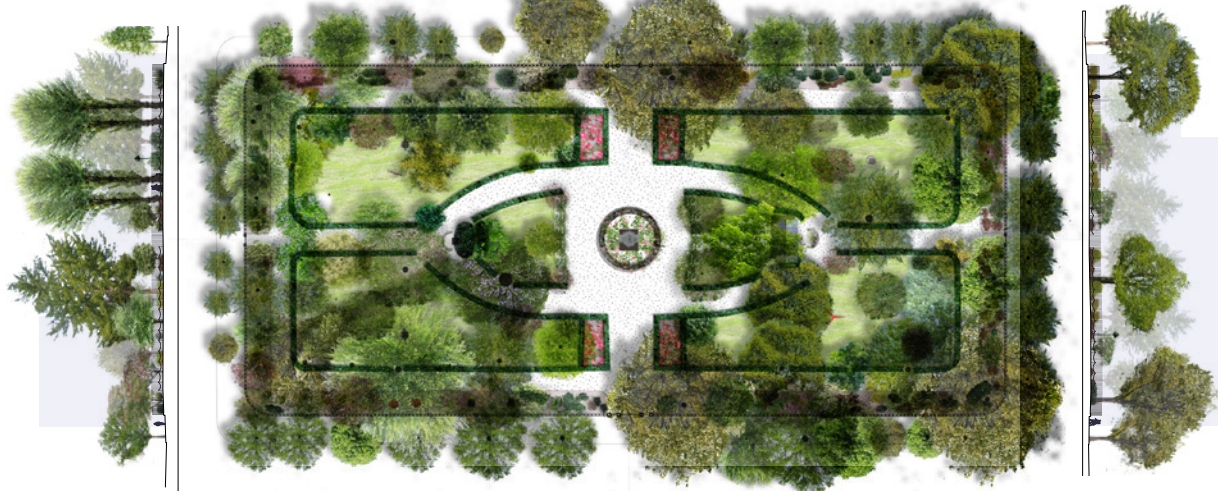




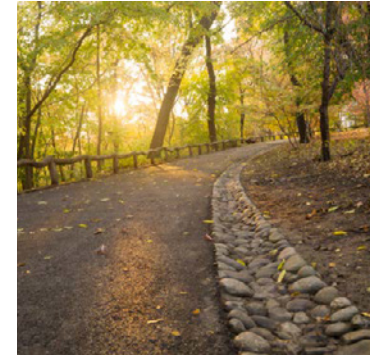
Gramercy Park is both a neighborhood icon and a beloved living landscape that requires active management and planning. This gated park, the centerpiece of a Landmark district, is managed by Trustees who in turn must manage their constituents' desires to improve the park, influence the park's appearance and operations. Starr Whitehouse's Master Plan report investigates the conditions and character of the planted areas and hardscape elements and articulates a plan to restore the park through planned capital improvements and strategic donations. The intent of the final recommendations is to maintain historical integrity, cultivate diversity in the plant palette, define the park's boundaries and to promote sustainable maintenance.



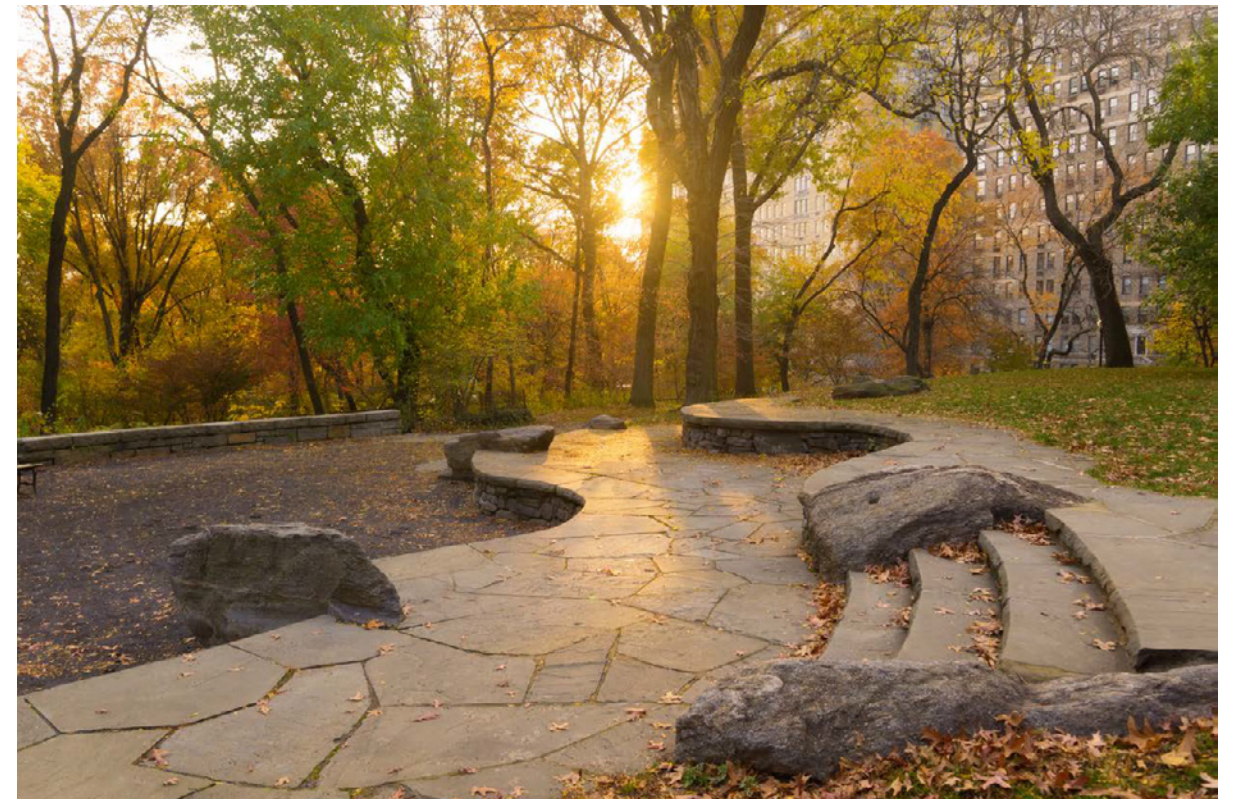
Existing Ponding (left) and Proposed Infiltration (right) at Central Oval



Rendered Site Plan and Sections of Gramercy Park (above). The restoration of the outer ring of canopy trees and woodland edge, along with a strengthened central axis, reinforces the original circulation pattern and landscape experiences.



As the highest natural elevation in Central Park, Summit Rock towers above the surrounding West Side landscapes, providing a quiet retreat and stunning views of Central Park West and its skyline. As the Chief of Design for Central Park, Laura Starr oversaw the restoration of Summit Rock, a site that, despite its views and historical significance, had been severely neglected. The restoration included the removal of delapidated pavement that crowned the site, replacing it with a new green lawn and a rustic stone amphitheater with benches overlooking the wooded slopes. Leading up to the landscape, a serpentine stairway carved into the bedrock was recovered and an improved path system encouraged park visitors to walk to the top of the hill.



Top: A restored portion of the historic drive rises through the woods to the summit.

Center: Stone terraces lead up to the hilltop and create a natural amphitheater overlooking the park.

At right: previous conditions.



**BEFORE**



The VIA 57 West Garden advances a radical reinterpretation of the urban courtyard block, animating a new residential community with a richly-detailed green landscape at its heart. The building is a “court-scraper”, its rectangular volume sliced diagonally from high peak to low corner, opening up to the light and views of the Hudson River. The courtyard, with the plan proportions of Central Park, is a deliberate counterpoint to the architecture. The experiential principles of Central Park—journey, revealed changing views, and lush nature—are expressed in a contemporary design vocabulary to create engaging outdoor social spaces. Mounting from the second to the fourth floor, the winding brick garden path leads through a shady birch forest, to a clearing delineated by sinuous benches, and up to a grassy meadow, where the low notch at the building’s corner reveals the river view. The garden thresholds—on the east up monumental stairs from the lobby, on the west under the building frame to cockpit balconies overlooking the river—link and contrast the realms of architecture and landscape. Constructed of toxin-free materials vetted through the manufacturers, the Garden sets new standards for green communities, proving that the mission of our public parks can be brought into our dwelling spaces to lighten the burdens of density on communities and environment alike.

Above, light pours into the courtyard over VIA’s characteristic lowered corner, creating a symbiosis between landscape and structure. Below, families enjoy the courtyard’s fog feature.



Looking down on the Bosque toward the ferry (above). Schoolchildren play in the Bosque’s Spiral fountain (below)

One of the first Battery landscapes to be renovated, the Bosque sets the vocabulary and character for the rest of the park—a meditation on the natural abundance that first drew the Lenape and later the Dutch to this small island at the mouth of the Hudson. Composed of two acres of garden “rooms” beneath a grid of existing London Plane trees, the Bosque integrates two distinct networks of circulation: broad, efficient paths to and from the Liberty Island ferries, and narrower, more winding paths for solitary rambles through the seaside gardens. Embedded in this path and planting matrix are custom food kiosks with seating, a Spiral Fountain popular with children, and the Gardens of Remembrance designed by Piet Oudolf, all built over a dense network of subterranean utilities and transportation infrastructure. These spaces create a diverse environment where people can eat, gather, chat, and sit in quiet contemplation—a key part of the city’s effort to infuse downtown with a creative climate to suit the 24/7 live and work community. Laura Starr organized the design and building of the project, overseeing a multidisciplinary team of architects, engineers, lighting designers, and renowned architects Weisz + Yoes.



The Bosque is the recipient of the following awards: Waterfront Center 2006 Excellence on the Waterfront Top Honor Award; ASLA NY Chapter Honor Award for Landscape Design.

### BATTERY BIKEWAY PERIMETER

The Battery Conservancy; NYC Parks  
New York, New York



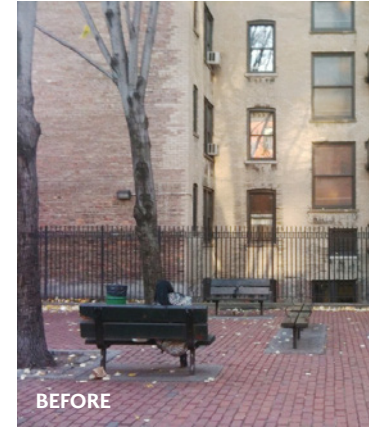
The goal of the Battery Bikeway Perimeter was to invite city life into the Park while creating the feeling of entering a different kind of space. Continuing the Route 9A Greenway, the landscape links the Hudson River Park Bikeway to the East River Esplanade along Battery Place and State Street. Bands of planting separate pedestrian walks from bikeways without limiting visibility. Park entrances are relocated to align with city streets, announced by dramatic lighting which provides striking wayfinding corridors at night. A low granite wall acts as a permeable boundary between park and city while offering seating for rest and recreation. Monuments commemorating the history of the neighborhood are relocated to a newly-detailed urban corridor—a Heroes' Walk along the edge of the park. A respite within its urban environment, the Battery Bikeway Perimeter offers perennial gardens and a sylvan canopy for riders and pedestrians to enjoy.



At top, the Walloon memorial, and above, the Giovanni da Verrazzano memorial, are two of several monuments relocated to specially-designed niches along the new perimeter. Each monument's relocation had to be carefully sited and articulated to curate a visible narrative and gain approval from the Public Design Commission.

### BLEECKER STREET SITTING AREA

Designed by Gail Wittwer-Laird while at NYC Parks  
New York, New York



During her tenure at NYC Parks, Starr Whitehouse senior associate Gail Wittwer-Laird led the redesign of the Bleecker Street sitting area, just south of the Bleecker Street Playground between Hudson and 11th Streets. Its first and only renovation since its opening in 1966, the redesign revitalizes a crucial neighborhood watering hole. The design goals were formulated and plans shared with project stakeholders including the local community board, The Landmarks Preservation Commission and elected officials. Primary renovations included removal and replacement of the buckled pavements and broken benches and additional lighting. New shade-tolerant gardens were installed along the perimeter of the adjacent building, softening the edges of the site while still maintaining the open, free-flowing character of the previous design. Bronze and granite sculpture "The Family," dedicated in 1992 by neighborhood sculptor Chaim Gross to Mayor Edward I. Koch remains a signature feature. Provisions were made to make the new seating area and chess tables compliant to all current ADA standards. The new planting beds now have ground hydrants for water, and are protected by post and chain fence at the edges. The project received a 2012 Village Award from the Greenwich Village Society for Historic Preservation.



(Above) Moveable tables and chairs allow visitors to continually reshape the plaza to suit their needs, mimicking opportunistic urban use patterns and allowing the space to flexibly accommodate a multiplicity of users.

# Brewer Fountain Rehabilitation

Boston, MA



**Client:** City of Boston Parks and Recreation  
**Design:** Carr, Lynch, and Sandell

Delta Fountains worked with The Boston Parks and Recreation Department on the rehabilitation of The Brewer Fountain. Located in the Boston Commonwealth, the 150 year old feature is a large, cast bronze sculptural bowl. The fountain was a gift from France in the 19th Century and until Delta's involvement, wasted all of the water that flowed over the bowls. Delta Fountains designed a reservoir and circulating system, along with sanitizing equipment, to protect the public. The feature had wasted over 4 billion gallons of water previous to this effort.



# Metropolitan Museum of Art

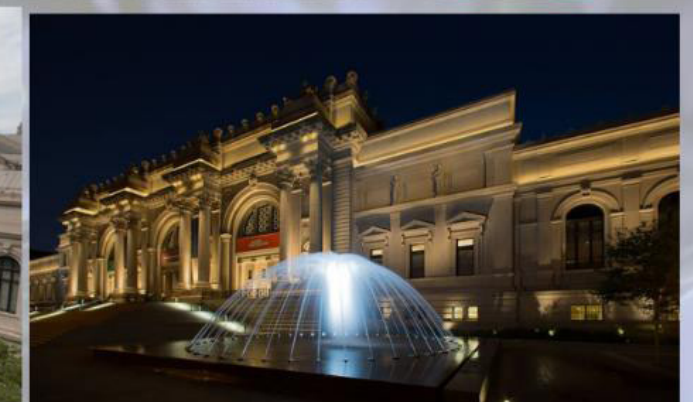
New York NY



**Client:** Metropolitan Museum of Art  
**Design:** OLIN

The Metropolitan Museum of Art dedicated their entrance plaza the David H. Koch Plaza in 2015. The two large tabletop fountains on each side of the walkway are programmed with synchronizing light and water shows. The Metropolitan Museum of Art plaza redesign encompassed the entire 1,021-foot-long, 70,706 square foot plaza. This modernization was more than one century after the completion of the original façade and more than 40 years after the plaza's last renovation. The entire project took two years to complete.

Delta Fountains provided the equipment for the two new fountains at the museum's 5th Avenue entrance. Each fountain holds 21,000 gallons of water, multiple underwater LED lights, and has 48 programmable jets, which are able to independently modulate, allowing for stunning display opportunities.





## REQUIRED FORMS

## ARCHITECT-ENGINEER QUALIFICATIONS

### PART I - CONTRACT-SPECIFIC QUALIFICATIONS

#### A. CONTRACT INFORMATION

1. TITLE AND LOCATION <i>(City and State)</i> <b>FRIENDS OF THE PUBLIC SQUARE HUDSON</b>		
2. PUBLIC NOTICE DATE <b>3/05/2022</b>	3. SOLICITATION OR PROJECT NUMBER	

#### B. ARCHITECT-ENGINEER POINT OF CONTACT

4. NAME AND TITLE <b>Laura Starr, Partner</b>		
5. NAME OF FIRM <b>Starr Whitehouse Landscape Architects and Planners PLLC</b>		
6. TELEPHONE NUMBER <b>212.487.3272</b>	7. FAX NUMBER <b>212.487.3273</b>	8. E-MAIL ADDRESS <b>lstarr@starrwhitehouse.com</b>

#### C. PROPOSED TEAM

*(Complete this section for the prime contractor and all key subcontractors.)*

	(Check)			9. FIRM NAME	10. ADDRESS	11. ROLE IN THIS CONTRACT
	PRIME	J-V	PARTNER SUBCONTRACTOR			
<b>a.</b>	<input checked="" type="checkbox"/>			<b>Starr Whitehouse Landscape Architects and Planners PLLC</b>  <input checked="" type="checkbox"/> CHECK IF BRANCH OFFICE	80 Broad St, Suite 1700, New York, NY, 10004	Prime; Landscape Architecture, Community Engagement, Site Planning, Urban Design
<b>b.</b>			<input checked="" type="checkbox"/>	<b>Delta Fountains</b>  <input type="checkbox"/> CHECK IF BRANCH OFFICE	11494 Columbia Park Dr W #4, Jacksonville FL 32258	Fountain consultant
<b>c.</b>				<input type="checkbox"/> CHECK IF BRANCH OFFICE		
<b>d.</b>				<input type="checkbox"/> CHECK IF BRANCH OFFICE		
<b>e.</b>				<input type="checkbox"/> CHECK IF BRANCH OFFICE		
<b>f.</b>				<input type="checkbox"/> CHECK IF BRANCH OFFICE		

#### D. ORGANIZATIONAL CHART OF PROPOSED TEAM

*(Attached)*

AUTHORIZED FOR LOCAL REPRODUCTION

STANDARD FORM 330 (REV. 8/2016)

**E. RESUMES OF KEY PERSONNEL PROPOSED FOR THIS CONTRACT**

(Complete one Section E for each key person.)

12. NAME Laura Starr	13. ROLE IN THIS CONTRACT Partner	14. YEARS EXPERIENCE	
		a. TOTAL 35	b. WITH CURRENT FIRM 15
15. FIRM NAME AND LOCATION (City and State) <b>Starr Whitehouse Landscape Architects and Planners PLLC, New York, NY</b>			
16. EDUCATION (DEGREE AND SPECIALIZATION) BA, Architecture, Washington University MLA, University of Pennsylvania		17. CURRENT PROFESSIONAL REGISTRATION (STATE AND DISCIPLINE) Landscape Architecture, New York and New Jersey	
18. OTHER PROFESSIONAL QUALIFICATIONS (Publications, Organization, Training, Awards, etc.) Professional Organizations/Affiliations: American Society of Landscape Architects, LEED Accredited Professional, Forum for Urban Design Awards: ASLA NY Chapter Honor Award, ASLA Merit Award for Design, The Waterfront Center's Excellence on the Water Award The Public Design Commission Award for Excellence in Design for Bushwick Inlet Park, Rudy Bruner Award for Urban Excellence Parks Council Philip N. Winslow Award, Victorian Society Award, New York City Landmarks Preservation Award  Publications/Speaking: "Waterfront and Open Space needs for Lower Manhattan after the Attacks of 9/11", RDOT, 2001; "Central Park as and Example of Public/Private Partnerships", Friends of Lincoln and Grant Parks, Chicago, 2000; "The Future of Historic Central Park," Plenary speaker, International Sonsbeek Symposium, Arnhem, the Netherlands, 1999; "Turning the Circle: Help Design Frederick Douglass Circle: An Exhibition of the Community Process", Landscape Architecture Magazine, 1995; "Laura Starr Rebuilding the City", Landscape Architecture Magazine, May 1995; "Meer Beauty", New York Magazine, December 19-26, 1994;			

**19. RELEVANT PROJECTS**

(1) TITLE AND LOCATION (City and State)	(2) YEAR COMPLETED	
	PROFESSIONAL SERVICES	CONSTRUCTION (If applicable)
Marsha P Johnson State Park Community Engagement and Schematic Design Brooklyn, NY	2021	TBD
(3) BRIEF DESCRIPTION (Brief scope, size, cost, etc.) AND SPECIFIC ROLE <input checked="" type="checkbox"/> Check if project performed with current firm As Principal in Charge, Laura led the Starr Whitehouse team through a rapid engagement process to identify an approach for commemorating Marsha's legacy while incorporating a diversity of community desires into the new Marsha P Johnson State Park. Through iterative conversations with neighborhood groups, Marsha's family, State Parks staff, everyday users, representatives of the Smorgasburg open-air food market, and transgender leaders of color, Starr Whitehouse developed a schematic design guided by the local community's drive to reclaim this former industrial site as a flexible, unstructured green space—while honoring the struggle of transgender people of color for safety and recognition.		
Jones Beach Energy and Nature Center Wantagh, NY	2017-2020	2019-2020
(3) BRIEF DESCRIPTION (Brief scope, size, cost, etc.) AND SPECIFIC ROLE <input checked="" type="checkbox"/> Check if project performed with current firm To accompany State Parks' new Energy and Nature Center, Laura has been overseeing the Starr Whitehouse team in transforming an existing 10-acre parking lot into a restored beachscape with diverse plantings from local maritime plant communities. Site circulation through sculpted dunes will take visitors on a journey through the topographic and hydrographic zones associated with a beach to bay ecology. A pollinator garden and outdoor exhibits such as the giant blade of a wind turbine advance the institution's educational mission.		
Jones Beach West Games Wantagh, NY	2018-2020	2019-2020
(3) BRIEF DESCRIPTION (Brief scope, size, cost, etc.) AND SPECIFIC ROLE <input checked="" type="checkbox"/> Check if project performed with current firm Starr Whitehouse was retained by NYS Parks to revitalize three subareas within the Robert Moses-era West Games: an 18-hole mini-golf course, a 46,000 SF sports court, and an entry plaza with new ticket booth. The design energizes these amenities with native plantings and sculptural elements that play on the site's location and its history as the nation's first fully-planned seaside recreation area. New and historic props recall the Jones Beach of the fifties or echo the airshow and other programming nearby. Plantings and grading carve out mini destinations like a boat prow water feature while curating views of the ocean and historic water tower.		
Nissequogue River State Park Master Plan Kings Park, NY	2019-ongoing	N/A
(3) BRIEF DESCRIPTION (Brief scope, size, cost, etc.) AND SPECIFIC ROLE <input checked="" type="checkbox"/> Check if project performed with current firm Starr Whitehouse is developing a master plan and associated environmental impact study with the New York State Office of Parks, Recreation, and Historic Preservation for 521-acre Nissequogue State Park on the North Shore of Long Island. Guided by comprehensive site inventory and analysis, as well as public outreach sessions, the plan will be framed by communal goals to create a rich, diverse, and resilient recreational destination, distinguished by its naturalistic landscape and community resources.		
Battery Bosque, New York, NY	1997-2005	2005
(3) BRIEF DESCRIPTION (Brief scope, size, cost, etc.) AND SPECIFIC ROLE <input type="checkbox"/> Check if project performed with current firm Cost: \$5,000,000 (construction). Transformation of a non-descript park into a horticultural and recreational destination through design excellence. The Bosque carves a natural refuge out of the otherwise bustling Battery Park. Composed of 2 acres of garden rooms woven together under the cover of a grid of London Plane Trees, the Bosque features a Spiral Fountain, a popular place for children to play, food kiosks, and an upcoming marine-themed carousel. Laura Starr organized the design and building of the Bosque, overseeing a multidisciplinary team in designing and building the Bosque.		

**E. RESUMES OF KEY PERSONNEL PROPOSED FOR THIS CONTRACT**

(Complete one Section E for each key person.)

12. NAME Jeffrey Poor	13. ROLE IN THIS CONTRACT Principal	14. YEARS EXPERIENCE	
		a. TOTAL 31	b. WITH CURRENT FIRM 13
15. FIRM NAME AND LOCATION (City and State) <b>Starr Whitehouse Landscape Architects and Planners PLLC, New York, NY</b>			
16. EDUCATION (DEGREE AND SPECIALIZATION) Bachelor of Arts, Amherst College, 1982 Master of Landscape Architecture, University of Pennsylvania, Graduate School of Fine Arts, 1990		17. CURRENT PROFESSIONAL REGISTRATION (STATE AND DISCIPLINE) Landscape Architecture, New York LEED AP	
18. OTHER PROFESSIONAL QUALIFICATIONS (Publications, Organization, Training, Awards, etc.) American Society of Landscape Architects LEED Accredited Professional  Honors & Awards ASLA NY, Honor Award, Southwest Resilience Park, 2020 Metropolitan Waterfront Alliance, WEDG Certification, Starlight Park, 2017 ASLA NY, Honor Award, Battery Perimeter, 2017 ASLA NY, Merit Award, Compass Residences, 2016  ASLA NY, Merit Award, Battery PlayScape, 2020 ASLA NY, Merit Award, E92nd Street Bonus Plaza, 2020 ASLA NY, Honor Award, VIA 57 West, 2017 LEED Platinum Certification, Bushwick Inlet Park, 2015			

**19. RELEVANT PROJECTS**

(1) TITLE AND LOCATION (City and State)	(2) YEAR COMPLETED	
	PROFESSIONAL SERVICES	CONSTRUCTION (If applicable)
Marsha P Johnson State Park Community Engagement and Schematic Design Brooklyn, NY	2021	2021-2022
(3) BRIEF DESCRIPTION (Brief scope, size, cost, etc.) AND SPECIFIC ROLE <input checked="" type="checkbox"/> Check if project performed with current firm As Principal, Jeffrey contributed to a rapid engagement process to identify an approach for commemorating Marsha's legacy while incorporating a diversity of community desires into the new Marsha P Johnson State Park. Through iterative conversations with neighborhood groups, Marsha's family, State Parks staff, everyday users, representatives of the Smorgasburg open-air food market, and transgender leaders of color, Starr Whitehouse developed a schematic design guided by the local community's drive to reclaim this former industrial site as a flexible, unstructured green space—while honoring the struggle of transgender people of color for safety and recognition.		
Empire State Trail Gateways Multiple Sites, NY	1997-2005	2005
(3) BRIEF DESCRIPTION (Brief scope, size, cost, etc.) AND SPECIFIC ROLE <input type="checkbox"/> Check if project performed with current firm In 2017, Starr Whitehouse teamed with C+G Partners and ALTA Planning + Design to create design guidelines for New York State's ambitious Empire State Trail system. Now, with Jeffrey's guidance as Principal, Starr Whitehouse has been retained with Bergmann as Engineer of Record to design and implement the first six gateways for the new system. Located in Manhattan, Syracuse, Rochester, Lockport, Tonawanda, and Buffalo, each Gateway reflects the local character of its host community and provides New Yorkers with the opportunity to explore the state's iconic landscapes and diverse history. The Gateways also enhance access points to the trail, transforming them into vibrant social spaces with small gathering areas, amenities, and extended native habitat.		
Bronx River House, Bronx, NY	2011-2012	Ongoing
(3) BRIEF DESCRIPTION (Brief scope, size, cost, etc.) AND SPECIFIC ROLE <input checked="" type="checkbox"/> Check if project performed with current firm The building stores the Alliance's canoes and kayaks, provides office, classroom and meeting spaces, and functions as a living part of the park. A steel mesh screen wall wraps the building, providing security and an armature for deciduous vines which modulate temperature. Roof photovoltaics and geothermal heating minimize energy use. Site stormwater is infiltrated to the ground or captured into a cistern for use for non-potable building systems and for irrigation. The outdoor program of the River House features the vine plantings for the screen wall, landscape swales with native plants, entry plantings and two main public spaces. Together with Principal Stephen Whitehouse, Jeffrey was in charge of developing designs for landscape elements to support the Bronx River Alliance's programs and environmental mission.		
Jones Beach West Games, Wantagh, NY	2018-2020	2019-2020
(3) BRIEF DESCRIPTION (Brief scope, size, cost, etc.) AND SPECIFIC ROLE <input checked="" type="checkbox"/> Check if project performed with current firm Starr Whitehouse was retained by NYS Parks to revitalize three subareas within the Robert Moses-era West Games: an 18-hole mini-golf course, a 46,000 SF sports court, and an entry plaza with new ticket booth. The design energizes these amenities with native plantings and sculptural elements that play on the site's location and its history as the nation's first fully-planned seaside recreation area. New and historic props recall the Jones Beach of the fifties or echo the airshow and other programming nearby. Plantings and grading carve out mini destinations like a boat prow water feature while curating views of the ocean and historic water tower.		
Jones Beach Energy & Nature Center, Wantagh, NY	2017-2020	CONSTRUCTION (If applicable) 2019-2020
(3) BRIEF DESCRIPTION (Brief scope, size, cost, etc.) AND SPECIFIC ROLE <input checked="" type="checkbox"/> Check if project performed with current firm To accompany State Parks' new Energy and Nature Center, Jeffrey worked with the Starr Whitehouse team in transforming an existing 10-acre parking lot into a restored beachscape with diverse plantings from local maritime plant communities. Site circulation through sculpted dunes will take visitors on a journey through the topographic and hydrographic zones associated with a beach to bay ecology. A pollinator garden and outdoor exhibits such as the giant blade of a wind turbine advance the institution's educational mission.		

**E. RESUMES OF KEY PERSONNEL PROPOSED FOR THIS CONTRACT**

(Complete one Section E for each key person.)

12. NAME Gail Wittwer-Laird	13. ROLE IN THIS CONTRACT Principal	14. YEARS EXPERIENCE	
		a. TOTAL 30	b. WITH CURRENT FIRM 5
15. FIRM NAME AND LOCATION (City and State) <b>Starr Whitehouse Landscape Architects and Planners PLLC, New York, NY</b>			
16. EDUCATION (DEGREE AND SPECIALIZATION) Master in Landscape Architecture, Harvard GSD Bachelor in Landscape Architecture, California Polytechnic State University, San Luis Obispo, CA Concentration in Urban Design, California State International Program, Florence, Italy		17. CURRENT PROFESSIONAL REGISTRATION (STATE AND DISCIPLINE) Landscape Architecture, New York and California	
18. OTHER PROFESSIONAL QUALIFICATIONS (Publications, Organization, Training, Awards, etc.) Professional Organizations/Affiliations: Society of Fellows of the American Academy in Rome, NYC Urban Forest Task Force, American Society of Landscape Architects Awards: Public Design Commission Award for Excellence, Village Society for Historic Preservation's Village Award, Bleecker Street Sitting, Public Design Commission Award for Excellence			

**19. RELEVANT PROJECTS**

(1) TITLE AND LOCATION (City and State)	(2) YEAR COMPLETED	
	PROFESSIONAL SERVICES	CONSTRUCTION (If applicable)
Empire State Trail Gateway Guidelines and Implementation Multiple sites, NYS	2017-2020	2019-2020
(3) BRIEF DESCRIPTION (Brief scope, size, cost, etc.) AND SPECIFIC ROLE <input checked="" type="checkbox"/> Check if project performed with current firm In 2017, Starr Whitehouse teamed with C+G Partners and ALTA Planning + Design to create design guidelines for New York State's ambitious Empire State Trail system. Now, under Gail's leadership as Principal, Starr Whitehouse has been retained with Bergmann as Engineer of Record to design and implement the first six gateways for the new system. Located in Manhattan, Syracuse, Rochester, Lockport, Tonawanda, and Buffalo, each Gateway reflects the local character of its host community and provides New Yorkers with the opportunity to explore the state's iconic landscapes and diverse history. The Gateways also enhance access points to the trail, transforming them into vibrant social spaces with small gathering areas, amenities, and extended native habitat.		
Jones Beach Energy and Nature Center Wantagh, NY	2017-2020	2019-2020
(3) BRIEF DESCRIPTION (Brief scope, size, cost, etc.) AND SPECIFIC ROLE <input checked="" type="checkbox"/> Check if project performed with current firm To accompany State Parks' new Energy and Nature Center, Gail has been overseeing the Starr Whitehouse team in transforming an existing 10-acre parking lot into a restored beachscape with diverse plantings from local maritime plant communities. Site circulation through sculpted dunes will take visitors on a journey through the topographic and hydrographic zones associated with a beach to bay ecology. A pollinator garden and outdoor exhibits such as the giant blade of a wind turbine advance the institution's educational mission.		
Jones Beach West Games Wantagh, NY	2018-2020	2019-2020
(3) BRIEF DESCRIPTION (Brief scope, size, cost, etc.) AND SPECIFIC ROLE <input checked="" type="checkbox"/> Check if project performed with current firm Starr Whitehouse was retained by NYS Parks to revitalize three subareas within the Robert Moses-era West Games: an 18-hole mini-golf course, a 46,000 SF sports court, and an entry plaza with new ticket booth. The design energizes these amenities with native plantings and sculptural elements that play on the site's location and its history as the nation's first fully-planned seaside recreation area. New and historic props recall the Jones Beach of the fifties or echo the airshow and other programming nearby. Plantings and grading carve out mini destinations like a boat prow water feature while curating views of the ocean and historic water tower.		
Nissequogue River State Park Kings Park, NY	2019-Ongoing	N/A
(3) BRIEF DESCRIPTION (Brief scope, size, cost, etc.) AND SPECIFIC ROLE <input checked="" type="checkbox"/> Check if project performed with current firm As Principal, Gail is leading the Starr Whitehouse team's community engagement and planning effort on a new master plan for Nissequogue River State Park. The plan prioritizes retention of important historic features of the site while opening up the park to a diversity of uses, enhanced circulation, and the extension of native habitat for local plant and animal species.		
Bayard Cutting Arboretum Great River, NY	2018-Ongoing	TBD
(3) BRIEF DESCRIPTION (Brief scope, size, cost, etc.) AND SPECIFIC ROLE <input checked="" type="checkbox"/> Check if project performed with current firm Starr Whitehouse is designing a new Visitor Center with a parking and circulation expansion at the historic Bayard Cutting Arboretum, originally part of the Bayard Cutting Estate on Long Island. The Visitor Center is designed as a glass pavilion that inserts itself in the landscape, while preserving the landscape and offering views from every side. The arboretum will provide an oasis of beauty and quiet for the pleasure, rest and refreshment of those who delight in outdoor beauty and bring about a greater appreciation and understanding of the value and importance of informal planting.		

**E. RESUMES OF KEY PERSONNEL PROPOSED FOR THIS CONTRACT**

(Complete one Section E for each key person.)

12. NAME Chris Anderson	13. ROLE IN THIS CONTRACT Landscape Designer	14. YEARS EXPERIENCE	
		a. TOTAL 7	b. WITH CURRENT FIRM 5
15. FIRM NAME AND LOCATION (City and State) <b>Starr Whitehouse Landscape Architects and Planners PLLC, New York, NY</b>			
16. EDUCATION (DEGREE AND SPECIALIZATION) BA, College of William & Mary MLA, SUNY College of Environmental Science and Forestry		17. CURRENT PROFESSIONAL REGISTRATION (STATE AND DISCIPLINE)	
18. OTHER PROFESSIONAL QUALIFICATIONS (Publications, Organization, Training, Awards, etc.) ASLA Student Honor Award, General Design, 2017 LA Foundation University Olmsted Scholar, 2017 Honor Society of Sigma Lambda Alpha, 2016-2017 SUNY-ESF Aaron R. Vogel Scholarship for land Protection, 2015			

**19. RELEVANT PROJECTS**

(1) TITLE AND LOCATION (City and State)	(2) YEAR COMPLETED	
	PROFESSIONAL SERVICES	CONSTRUCTION (If applicable)
Battery PlayScape, New York, NY	2007-Present	Ongoing
(3) BRIEF DESCRIPTION (Brief scope, size, cost, etc.) AND SPECIFIC ROLE <input checked="" type="checkbox"/> Check if project performed with current firm The Battery's ecological richness finds a unique expression in the PlayScape, a new play area designed to promote ecological literacy in children. Moving off the premise that an early appreciation for ecological diversity fosters environmental consciousness in adulthood, each of the PlayScape's five zones is designed around a unique typology. These zones combine plantings, custom play structures, and programming to create an immersive play experience that teaches children about daily life in a briny marshland, or the hardy plant communities of a rocky bluff. Interwoven with the ecological story is the reality of climate change and the necessities of environmental stewardship in the twenty-first century. Impermeable paving visibly directs surface runoff to verdant raingardens crisscrossed by food bridges, integrating environmental management practices into the very heart of the play experience. Chris is a landscape designer on the project.		
Crossroads Development Plaza, Bronx, NY	2017-Present	Ongoing
(3) BRIEF DESCRIPTION (Brief scope, size, cost, etc.) AND SPECIFIC ROLE <input checked="" type="checkbox"/> Check if project performed with current firm Costs: N/A. Landscape designer for the transformation of a mapped street into a pedestrian plaza between two new residential buildings, including emergency vehicle access and a playground. Chris served a support role in completion of the construction documentation set, including revisions of materials, layout, grading plans and detail drawings.		
Mill Brook Houses, Bronx, NY	2017-Present	Ongoing
(3) BRIEF DESCRIPTION (Brief scope, size, cost, etc.) AND SPECIFIC ROLE <input checked="" type="checkbox"/> Check if project performed with current firm Costs: N/A. Landscape designer for the development of the communal open spaces and roof terraces associated with a proposed Senior Housing Facility sponsored by the West Side Federation for Senior and Supportive housing in the St. Ann's neighborhood of the South Bronx, within the campus of the NYCHA Millbrook Houses. The scope of work includes a ground level plaza which connects the housing development to its local community as well as two private roof terraces and a sunken garden. The plans are being developed in collaboration with the project architects Perkins Eastman.		
Hoboken Southwest Park, Hoboken, NJ	2014-2017	2017
(3) BRIEF DESCRIPTION (Brief scope, size, cost, etc.) AND SPECIFIC ROLE <input type="checkbox"/> Check if project performed with current firm In a flood-prone corner of Hoboken, Starr Whitehouse led an interdisciplinary team of engineers, designers, and cost estimators to craft a resilient core of stormwater detention systems tucked into a community-designed urban park. Developed with residents in an intensive series of design workshops, the park's interlocking social spaces enliven this neighborhood, enhancing the community that it defends. An array of rain gardens, permeable pavement, and sub-surface water basins capture stormwater, while an amphitheater, dog run, wood deck paths, and a perimeter pedestrian mall transform this once-industrial neighborhood into a thriving social hub. Chris was a landscape designer on the project.		
StuyTown Fitness Playground	2016-2017	2017
(3) BRIEF DESCRIPTION (Brief scope, size, cost, etc.) AND SPECIFIC ROLE <input type="checkbox"/> Check if project performed with current firm Starr Whitehouse was retained to redesign Playground 7 on the campus of StuyTown—an apartment community in Lower Manhattan. The project's focus is to expand opportunities for physical activity to a resident population with a wide range of ages and abilities and integrate the site into the adjacent landscape. Playground 7 accommodates diverse physical and social activities and integrates the space into a natural landscape. A cushioned track and 40-yard dash connect exercise zones each designed for core training, upper body strength, lower body strength, and cardiovascular workouts. Colorful bioswales contextualize the play environment and create an unmistakable identity for the campus. Chris was a landscape designer on the project.		



**E. RESUMES OF KEY PERSONNEL PROPOSED FOR THIS CONTRACT**

(Complete one Section E for each key person.)

12. NAME Harriet Grimm	13. ROLE IN THIS CONTRACT Landscape Architect	14. YEARS EXPERIENCE	
		a. TOTAL 30	b. WITH CURRENT FIRM 3

15. FIRM NAME AND LOCATION (City and State)

**Starr Whitehouse Landscape Architects and Planners PLLC, New York, NY**

16. EDUCATION (DEGREE AND SPECIALIZATION) Master in Landscape Architecture, University of Pennsylvania, 1987 Bachelor in Biology, New York University, 1980	17. CURRENT PROFESSIONAL REGISTRATION (STATE AND DISCIPLINE) Landscape Architecture, NY & PA
---	---

18. OTHER PROFESSIONAL QUALIFICATIONS (Publications, Organization, Training, Awards, etc.)

LEED AP  
Certified Arborist  
OSHA 10-hour certification  
NYS DEC Certificate of Erosion and Sediment Control Training  
American Society of Landscape Architects  
International Society of Arboriculture

**19. RELEVANT PROJECTS**

(1) TITLE AND LOCATION (City and State)	(2) YEAR COMPLETED	
	PROFESSIONAL SERVICES	CONSTRUCTION (If applicable)
Jones Beach West Games Wantagh, NY	2018-2020	2020
(3) BRIEF DESCRIPTION (Brief scope, size, cost, etc.) AND SPECIFIC ROLE <input checked="" type="checkbox"/> Check if project performed with current firm Starr Whitehouse was retained by NYS Parks to revitalize three subareas within the Robert Moses-era West Games: an 18-hole mini-golf course, a 46,000 SF sports court, and an entry plaza with new ticket booth. The design energizes these amenities with native plantings and sculptural elements that play on the site's location and its history as the nation's first fully-planned seaside recreation area. New and historic props recall the Jones Beach of the fifties or echo the airshow and other programming nearby. Plantings and grading carve out mini destinations like a boat prow water feature while curating views of the ocean and historic water tower.		
Empire State Trail Gateway Guidelines and Implementation Multiple sites, NYS	20197-2020	2019-2020
(3) BRIEF DESCRIPTION (Brief scope, size, cost, etc.) AND SPECIFIC ROLE <input checked="" type="checkbox"/> Check if project performed with current firm Starr Whitehouse has been retained with Bergmann as Engineer of Record to design and implement the first six gateways for the new Empire State Trail system. Located in Manhattan, Syracuse, Rochester, Lockport, Tonawanda, and Buffalo, each Gateway reflects the local character of its host community and provides New Yorkers with the opportunity to explore the state's iconic landscapes and diverse history. The Gateways also enhance access points to the trail, transforming them into vibrant social spaces with small gathering areas, amenities, and extended native habitat.		
Manhattan Greenway Harlem River, New York, NY	2016-Ongoing	2024
(3) BRIEF DESCRIPTION (Brief scope, size, cost, etc.) AND SPECIFIC ROLE <input checked="" type="checkbox"/> Check if project performed with current firm The Manhattan Greenway Harlem River will create seven new acres of waterfront open space from 125th Street to 132nd Street, as well as new pedestrian and bicycle connections to the Manhattan Greenway from East Harlem, the South Bronx, and Randall's Island. Starr Whitehouse has been working since 2016 on the creation of this park, beginning with conceptual planning for NYC Parks, through current construction documentation of the park for NYC EDC. The design is an infrastructural challenge, as much of the project's 4,000 LF parkland is located on top of a platform and bulkhead, with several bridges crossing over the site. Community engagement has been at the heart of the planning and design process, in an effort to restore the Harlem River waterfront as a community asset and an ecological resource for education, culture, and recreation.		
Bayard Cutting Arboretum Great River, NY	2018-Ongoing	TBD
(3) BRIEF DESCRIPTION (Brief scope, size, cost, etc.) AND SPECIFIC ROLE <input checked="" type="checkbox"/> Check if project performed with current firm Starr Whitehouse is designing a new Visitor Center with a parking and circulation expansion at the historic Bayard Cutting Arboretum, originally part of the Bayard Cutting Estate on Long Island. The Visitor Center is designed as a glass pavilion that inserts itself in the landscape, while preserving the landscape and offering views from every side. The arboretum will provide an oasis of beauty and quiet for the pleasure, rest and refreshment of those who delight in outdoor beauty and bring about a greater appreciation and understanding of the value and importance of informal planting.		
South Park at Freshkills Park, Staten Island, NY	2021--Ongoing	CONSTRUCTION (if applicable) 2022
(3) BRIEF DESCRIPTION (Brief scope, size, cost, etc.) AND SPECIFIC ROLE <input checked="" type="checkbox"/> Check if project performed with current firm Once the world's largest landfill, Freshkills Park is poised to become a working model of land restoration at the largest scale. As part of New York's Anchor Parks Initiative, Starr Whitehouse was retained to lead an interdisciplinary team of engineers, ecologists, and architects to create a new master plan and implement the first stage of reclamation at the 46-acre South Park. Developed in close partnership with the community, the master plan has two main goals: restoring ecological systems and reintroducing recreation and amenity to the reclaimed site.		

**E. RESUMES OF KEY PERSONNEL PROPOSED FOR THIS CONTRACT**

(Complete one Section E for each key person.)

12. NAME Mary Vèlez	13. ROLE IN THIS CONTRACT Landscape Designer	14. YEARS EXPERIENCE	
		a. TOTAL 3	b. WITH CURRENT FIRM 1

15. FIRM NAME AND LOCATION (City and State)

**Starr Whitehouse Landscape Architects and Planners PLLC, New York, NY**

16. EDUCATION (DEGREE AND SPECIALIZATION) Master in Landscape Architecture, University of Virginia, 2019 Bachelor in Environmental Studies, Colgate University, 2016	17. CURRENT PROFESSIONAL REGISTRATION (STATE AND DISCIPLINE)
--	--

18. OTHER PROFESSIONAL QUALIFICATIONS (Publications, Organization, Training, Awards, etc.)

Awards:  
Bill Millsap Fellowship  
Mellon Global South Humanities Lab  
Madison Lane Charitable Trust Visual Arts Prize Honorable Mention

**19. RELEVANT PROJECTS**

(1) TITLE AND LOCATION (City and State)	(2) YEAR COMPLETED	
	PROFESSIONAL SERVICES	CONSTRUCTION (If applicable)
Nissequogue River State Park Master Plan Kings Park, NY	2019-ongoing	N/A
(3) BRIEF DESCRIPTION (Brief scope, size, cost, etc.) AND SPECIFIC ROLE <input checked="" type="checkbox"/> Check if project performed with current firm Starr Whitehouse is developing a master plan and associated environmental impact study with the New York State Office of Parks, Recreation, and Historic Preservation for 521-acre Nissequogue State Park on the North Shore of Long Island. Guided by comprehensive site inventory and analysis, as well as public outreach sessions, the plan will be framed by communal goals to create a rich, diverse, and resilient recreational destination, distinguished by its naturalistic landscape and community resources.		
Manhattan Greenway Harlem River, New York, NY	2016-Ongoing	2024
(3) BRIEF DESCRIPTION (Brief scope, size, cost, etc.) AND SPECIFIC ROLE <input checked="" type="checkbox"/> Check if project performed with current firm The Manhattan Greenway Harlem River will create seven new acres of waterfront open space from 125th Street to 132nd Street, as well as new pedestrian and bicycle connections to the Manhattan Greenway from East Harlem, the South Bronx, and Randall's Island. Starr Whitehouse has been working since 2016 on the creation of this park, beginning with conceptual planning for NYC Parks, through current construction documentation of the park for NYC EDC. The design is an infrastructural challenge, as much of the project's 4,000 LF parkland is located on top of a platform and bulkhead, with several bridges crossing over the site. Community engagement has been at the heart of the planning and design process, in an effort to restore the Harlem River waterfront as a community asset and an ecological resource for education, culture, and recreation.		
Vine Street Waterfront Development, Philadelphia, PA	2020-Ongoing	TBD
(3) BRIEF DESCRIPTION (Brief scope, size, cost, etc.) AND SPECIFIC ROLE <input checked="" type="checkbox"/> Check if project performed with current firm Starr Whitehouse is leading landscape design on one of the most significant waterfront development efforts on the East Coast, Philadelphia's upcoming Vine Street Development. The project includes a new public park to improve connections to the water, preserve the site's 17th century archaeological heritage, and extend DRWC's recent efforts to create new waterfront public spaces such as Race Street Pier and Cherry Street Pier. The project will also expand on Starr Whitehouse's previous work developing innovative stormwater and resilience strategies integrated into a rejuvenated public realm for our dense coastal communities.		
Tivoli Preserve, Albany, NY	2021	CONSTRUCTION (If applicable)
(3) BRIEF DESCRIPTION (Brief scope, size, cost, etc.) AND SPECIFIC ROLE <input type="checkbox"/> Check if project performed with current firm Tivoli is one of the largest natural areas in the City of Albany, at approximately 72-acres. The project scope included design and construction of a loop trail system to connect the Tivoli Lake Preserve entrances and provide access to the Preserve's extensive secondary trail network and Tivoli Lake. The new, one-mile, ADA-compliant trail, named for the late environmental activist and youth mentor Yusuf Burgess will bring visitors to Tivoli Lake and the newly restored and day-lit Patroon Creek.		
Imagine Downtown Providence Master Plan, Providence, RI	2021	CONSTRUCTION (if applicable) N/A
(3) BRIEF DESCRIPTION (Brief scope, size, cost, etc.) AND SPECIFIC ROLE <input type="checkbox"/> Check if project performed with current firm Through a community engagement process and a review of the needed changes to the City's infrastructure, this master plan proposes a lively, equitable, and public-friendly downtown Providence. The plan highlights 3 major elements: creating a friendlier Kennedy Plaza for transit and pedestrians, reclaiming of the public spaces throughout the greater Kennedy plaza for public activation, and modernization of the Riverwalks.		

<b>F. EXAMPLE PROJECTS WHICH BEST ILLUSTRATE PROPOSED TEAM'S QUALIFICATIONS FOR THIS CONTRACT</b> <i>(Present as many projects as requested by the agency or 10 projects, if not specified. Complete one section F for each project.)</i>		20. EXAMPLE PROJECT KEY NUMBER <b>1</b>
21. TITLE AND LOCATION <i>(City and State)</i> <b>Empire State Trail Gateways</b> Multiple Sites, NY	22. YEAR COMPLETED	
	PROFESSIONAL SERVICES 2018-2019	CONSTRUCTION <i>(if applicable)</i> Multiple phases

23. PROJECT OWNER'S INFORMATION

a. PROJECT OWNER NYS Office of Parks, Recreation, and Historic Preservation	b. POINT OF CONTACT NAME Andy Beers	c. POINT OF CONTACT TELEPHONE NUMBER 518.473.3835
--	--	--

24. BRIEF DESCRIPTION OF PROJECT AND RELEVANCE TO THIS CONTRACT *(include scope, size, and cost)*

Cost (Fee): \$350,000 per site  
 In 2017, Starr Whitehouse teamed with C+G Partners and ALTA Planning + Design to create design guidelines for New York State's ambitious Empire State Trail system, a continuous 750-mile route spanning from the urban core of New York City north to Canada and west to Buffalo. Now, Starr Whitehouse has been retained with Bergmann as Engineer of Record to design and implement the first six gateways for the new system. Located in Manhattan, Syracuse, Rochester, Lockport, Tonawanda, and Buffalo, each Gateway reflects the local character of its host community and provides New Yorkers with the opportunity to explore the state's iconic landscapes and diverse history. The Gateways also enhance access points to the trail, transforming them into vibrant social spaces with small gathering areas and amenities such as benches, restrooms, potable water, information kiosks, bike repair, and charging stations. Native plant palettes provide visual interest as well as habitat for local and migratory animal and insect life. Lauded by Gov. Cuomo, the Trail will protect native ecosystems and drive economic activity. Upon its completion in 2020, the corridor will be the longest multi-use state trail in the nation.



25. FIRMS FROM SECTION C INVOLVED WITH THIS PROJECT

	(1) FIRM NAME	(2) FIRM LOCATION <i>(City and State)</i>	(3) ROLE
a.	Starr Whitehouse Landscape Architects and Planners PLLC	New York, NY	Landscape architecture
b.	(1) FIRM NAME	(2) FIRM LOCATION <i>(City and State)</i>	(3) ROLE
c.	(1) FIRM NAME	(2) FIRM LOCATION <i>(City and State)</i>	(3) ROLE
d.	(1) FIRM NAME	(2) FIRM LOCATION <i>(City and State)</i>	(3) ROLE
e.	(1) FIRM NAME	(2) FIRM LOCATION <i>(City and State)</i>	(3) ROLE

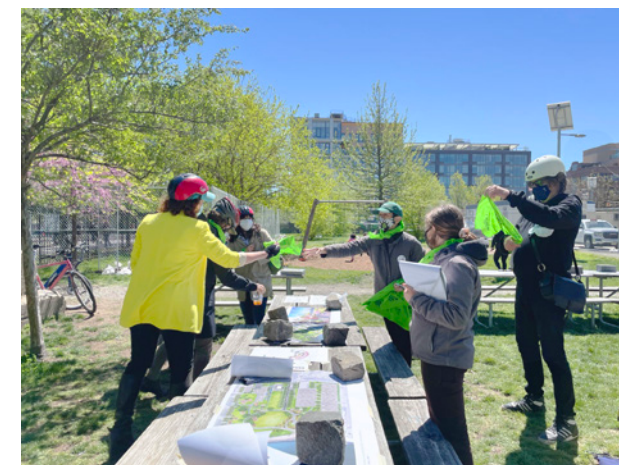
<b>F. EXAMPLE PROJECTS WHICH BEST ILLUSTRATE PROPOSED TEAM'S QUALIFICATIONS FOR THIS CONTRACT</b> <i>(Present as many projects as requested by the agency or 10 projects, if not specified. Complete one section F for each project.)</i>		20. EXAMPLE PROJECT KEY NUMBER <b>2</b>
21. TITLE AND LOCATION <i>(City and State)</i> <b>Marsha P Johnson State Park Community Engagement &amp; Schematic Design</b> Brooklyn, NY	22. YEAR COMPLETED	
	PROFESSIONAL SERVICES 2021	CONSTRUCTION <i>(if applicable)</i> 2021-2022

23. PROJECT OWNER'S INFORMATION

a. PROJECT OWNER New York State Office of Parks, Recreation, and Historic Preservation	b. POINT OF CONTACT NAME Leslie Wright	c. POINT OF CONTACT TELEPHONE NUMBER 212.866.2720
---	---	--

24. BRIEF DESCRIPTION OF PROJECT AND RELEVANCE TO THIS CONTRACT *(include scope, size, and cost)*

Cost (Fee): TBD  
 In 2020, Governor Cuomo rededicated East River State Park to the memory of Marsha P Johnson, an LGBTQ+ rights activist, self-identified drag queen, and forebear of the transgender rights movement. Starr Whitehouse led a rapid engagement process to identify an approach for commemorating Marsha's legacy while incorporating a diversity of community desires into the park landscape. Through iterative conversations with neighborhood groups, Marsha's family, State Parks staff, everyday users, representatives of the Smorgasburg open-air food market, and transgender leaders of color, Starr Whitehouse developed a schematic design guided by the local community's drive to reclaim this former industrial site as an unstructured green space—while honoring the struggle of transgender people of color for safety and recognition. The inclusive design embodies these diverse aspirations, enhancing the park's openness, improving connections to the river, and encouraging a broad range of activity. Commemoration is conceived as a journey through this flexible space. An entry gate welcomes people of all backgrounds to Marsha's park. Panels display a narrative collaboratively written by a team of transgender leaders of color, telling Marsha's story and conveying important concepts about transgender identity. Flowering trees, perennials, and wetland gardens commemorate Marsha's love of flowers, concluding with a mosaic overlook that reflects on Marsha's life and the lives of other transgender women who were murdered.



Over the course of an intensive 48-hour period, Starr Whitehouse met with a broad array of local residents, community groups, agency stakeholders, and transgender leaders of color to build consensus around an open, inclusive, and flexible design for Marsha P Johnson State Park.

25. FIRMS FROM SECTION C INVOLVED WITH THIS PROJECT

	(1) FIRM NAME	(2) FIRM LOCATION <i>(City and State)</i>	(3) ROLE
a.	Starr Whitehouse Landscape Architects and Planners PLLC	New York, NY	Landscape architecture
b.	(1) FIRM NAME	(2) FIRM LOCATION <i>(City and State)</i>	(3) ROLE
c.	(1) FIRM NAME	(2) FIRM LOCATION <i>(City and State)</i>	(3) ROLE
d.	(1) FIRM NAME	(2) FIRM LOCATION <i>(City and State)</i>	(3) ROLE
e.	(1) FIRM NAME	(2) FIRM LOCATION <i>(City and State)</i>	(3) ROLE

<b>F. EXAMPLE PROJECTS WHICH BEST ILLUSTRATE PROPOSED TEAM'S QUALIFICATIONS FOR THIS CONTRACT</b> <i>(Present as many projects as requested by the agency or 10 projects, if not specified. Complete one section F for each project.)</i>		20. EXAMPLE PROJECT KEY NUMBER <b>3</b>
21. TITLE AND LOCATION <i>(City and State)</i> <b>Jones Beach Energy &amp; Nature Center</b> Jones Beach State Park, NY	22. YEAR COMPLETED	
	PROFESSIONAL SERVICES 2017-2020	CONSTRUCTION <i>(if applicable)</i> 2019-2020

**23. PROJECT OWNER'S INFORMATION**

a. PROJECT OWNER New York State Office of Parks, Recreation, and Historic Preservation	b. POINT OF CONTACT NAME Scott Sepela, R.A.	c. POINT OF CONTACT TELEPHONE NUMBER 631.321.3536
---	--	--

24. BRIEF DESCRIPTION OF PROJECT AND RELEVANCE TO THIS CONTRACT *(include scope, size, and cost)*

Cost: \$2.5 Million  
 At Jones Beach on Long Island, NYS Parks is creating a new energy and nature center that will provide hands-on exhibits for the general public about beach ecology. To accompany the new building, Starr Whitehouse has been retained to transform an existing parking lot into a restored beachscape featuring diverse planting taken from local maritime communities. Site circulation will take visitors on a journey through the topographic and hydrographic zones associated with a beach to bay ecology in the Northeast. In order to secure the sculpted dunes against erosion and sediment transportation on this windy site, Starr Whitehouse worked with an ecologist to determine the best placement for sand and specifications for particle size. Once complete, the new landscape will transform almost 10 acres of concrete parking lot into native grasses and scrubland that will not only recreate lost habitat, but provide an educational opportunity for students and visitors to learn about native species.



The landscape features solar panels and foot paths leading visitors through native maritime ecologies surrounding the new Energy and Nature Center in an educational and immersive natural experience.

**25. FIRMS FROM SECTION C INVOLVED WITH THIS PROJECT**

a.	(1) FIRM NAME Starr Whitehouse Landscape Architects and Planners PLLC	(2) FIRM LOCATION <i>(City and State)</i> New York, NY	(3) ROLE Landscape architecture
b.	(1) FIRM NAME	(2) FIRM LOCATION <i>(City and State)</i>	(3) ROLE
c.	(1) FIRM NAME	(2) FIRM LOCATION <i>(City and State)</i>	(3) ROLE
d.	(1) FIRM NAME	(2) FIRM LOCATION <i>(City and State)</i>	(3) ROLE
e.	(1) FIRM NAME	(2) FIRM LOCATION <i>(City and State)</i>	(3) ROLE

<b>F. EXAMPLE PROJECTS WHICH BEST ILLUSTRATE PROPOSED TEAM'S QUALIFICATIONS FOR THIS CONTRACT</b> <i>(Present as many projects as requested by the agency or 10 projects, if not specified. Complete one section F for each project.)</i>		20. EXAMPLE PROJECT KEY NUMBER <b>4</b>
21. TITLE AND LOCATION <i>(City and State)</i> <b>Nissequogue River State Park Master Plan</b> Kings Park, NY	22. YEAR COMPLETED	
	PROFESSIONAL SERVICES 2021--Ongoing	CONSTRUCTION <i>(if applicable)</i> N/A

**23. PROJECT OWNER'S INFORMATION**

a. PROJECT OWNER NYC Parks; Mayor's Office of Resiliency and Recovery	b. POINT OF CONTACT NAME George Gorman	c. POINT OF CONTACT TELEPHONE NUMBER 631.669.1000
--	---	--

24. BRIEF DESCRIPTION OF PROJECT AND RELEVANCE TO THIS CONTRACT *(include scope, size, and cost)*

Cost: approx. \$1 Million  
 Nissequogue State Park is a 521-acre park on the North Shore of Long Island. The park is also known as King's Park, for the former King's Park Psychiatric Hospital which occupied 153-acres of the site until it closed in 1996. The largely undeveloped park opened to the public in 2000, containing an amalgam of former hospital buildings, a waterfront with a marina and diverse natural areas. A large portion of the site designated as a New York State Bird Conservation Area. The project scope includes a parkwide master plan and associated environmental impact study. The master plan is guided by comprehensive site inventory and analysis, and framed by communal goals to create a rich, diverse, and resilient recreational destination. The park's future is inextricably tied to the site's rich history as a place of community building and healing. The former hospital campus is being re-imagined as both a place of respite and recreation. The park will become a public destination distinguished by its naturalistic landscape and community resources, reestablishing its identity as a core element of both the surrounding towns, the wider Long Island region, and the New York State Parks System.



**25. FIRMS FROM SECTION C INVOLVED WITH THIS PROJECT**

a.	(1) FIRM NAME Starr Whitehouse Landscape Architects and Planners PLLC	(2) FIRM LOCATION <i>(City and State)</i> New York, NY	(3) ROLE Landscape architecture
b.	(1) FIRM NAME	(2) FIRM LOCATION <i>(City and State)</i>	(3) ROLE
c.	(1) FIRM NAME	(2) FIRM LOCATION <i>(City and State)</i>	(3) ROLE
d.	(1) FIRM NAME	(2) FIRM LOCATION <i>(City and State)</i>	(3) ROLE
e.	(1) FIRM NAME	(2) FIRM LOCATION <i>(City and State)</i>	(3) ROLE



