



## Indoor Air Sampling

The Multistate Environmental Response Trust (Multistate Trust) is working with the Louisiana Department of Environmental Quality (LDEQ) to collect indoor air samples near the Site.

### Site and Investigation Background

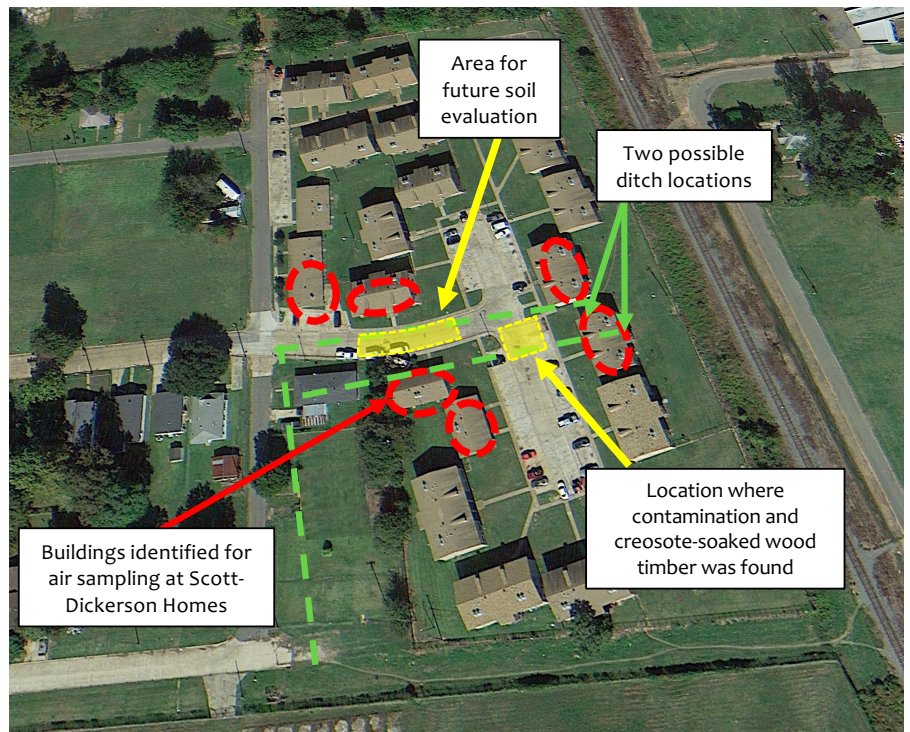
Kerr-McGee and its predecessors treated railroad ties with a mixture of creosote and fuel oil at the ±32-acre Site from 1930 to 1987. Because of Kerr-McGee's wood treatment operations, creosote-related contamination is present on- and off-Site in soil and groundwater. There are residences north and south of the Site and commercial/industrial properties east, west and southwest of the Site.

The Multistate Trust is prioritizing the clean up of shallow surface soil in residential areas near the Site. To protect both residents and construction workers, excavation activities were conducted around Scott-Dickerson and nearby properties from April 2022 to October 2023.

### Why Is Indoor Air Sampling Needed?

In September 2023, after hundreds of samples and 18 months of excavation, workers found creosote-soaked timber and stained soil which had higher levels of contamination than had been previously found near the Site.

Because of these buried materials, and the fact that they may be located in the footprint of historical waste ditches from the Site, the Multistate Trust is working with LDEQ to investigate whether contaminated materials may be located under buildings, raising the risk that contaminated air may be entering into buildings.



### How Can Contaminated Air Potentially Enter Indoors?

Indoor air can become contaminated when chemicals from contaminated materials, soil, or groundwater evaporate and travel into buildings through cracks in foundations or through utility pipes.

Not all indoor air contamination comes from underground. Some common commercial or household materials contain chemicals that may be detected by indoor air testing, including paints, gasoline-powered machinery, certain building materials and cleaning products, dry-cleaned clothing, and cigarette smoke. Motor vehicle emissions and other outdoor sources can also affect indoor air quality.

## What To Expect

Air samples will be collected at buildings that may be located close to potential contamination. Indoor air sampling should not cause major disruptions. Sampling events are scheduled in February and April 2024.

- **Subslab Samples** will be collected from air below buildings to show whether there is a potential for contamination under buildings. A technician will drill a small hole through the floor/slab and install a probe. Sampling will take about an hour.
- **Indoor Air Samples** will be collected with handheld devices for real-time measurements or with canisters to collect an average concentration over the course of a day. The canisters are the size of a volleyball and collect air silently. After 24 hours, a technician will collect the sample for laboratory analysis.
- **Outdoor Air Samples** will be collected to find the “background” outdoor air concentrations and to assess if they are affecting indoor air. They will be collected upwind of buildings using canisters. These canisters are chained to structures, such as light or telephone poles, and remain in place for 24 hours.



*Subslab sample probe in foundation*



*Indoor air sampling canister*

## What To Do When Samples Are Collected

### What to do:

- Technicians will ask you a few questions to determine where to place the canister and what kind of chemicals are already in your home.
- You can do most of the things you would do on a normal day and don't have to leave the house or building.
- Keep pets in a separate room.

### What not to do:

- Do not do any painting in the building.
- Do not do laundry, especially if your laundry area is near a sample location.
- Do not use cleaning products, glue, or chemicals (if possible).
- Do not smoke in the building or near outdoor air canisters.
- Do not touch the sampling equipment.

## What Happens After Samples Are Collected?

The Multistate Trust will send residents sampling results after each sampling event. We will compare the concentrations in indoor air, subslab air, and outdoor air to assess whether indoor air contamination is a potential concern. Community meeting(s) will be held to explain next steps.

If sampling confirms contamination is affecting the air in your home above EPA standards and due to contamination in the soil, air purifying units will be provided at no expense. If needed, more permanent solutions will be implemented.

## Contact Us for More Information

**Multistate Trust** – Claire Woods, (910) 765-7237, [cw@g-etg.com](mailto:cw@g-etg.com)  
**LDEQ** – Paula Sen, (318) 676-7521, [paula.sen@LA.gov](mailto:paula.sen@LA.gov)

For additional information, visit <https://bossiercity.greenfieldenvironmental.com>



LEARN MORE