

WHO WE'VE HEARD FROM

Engagement Summary

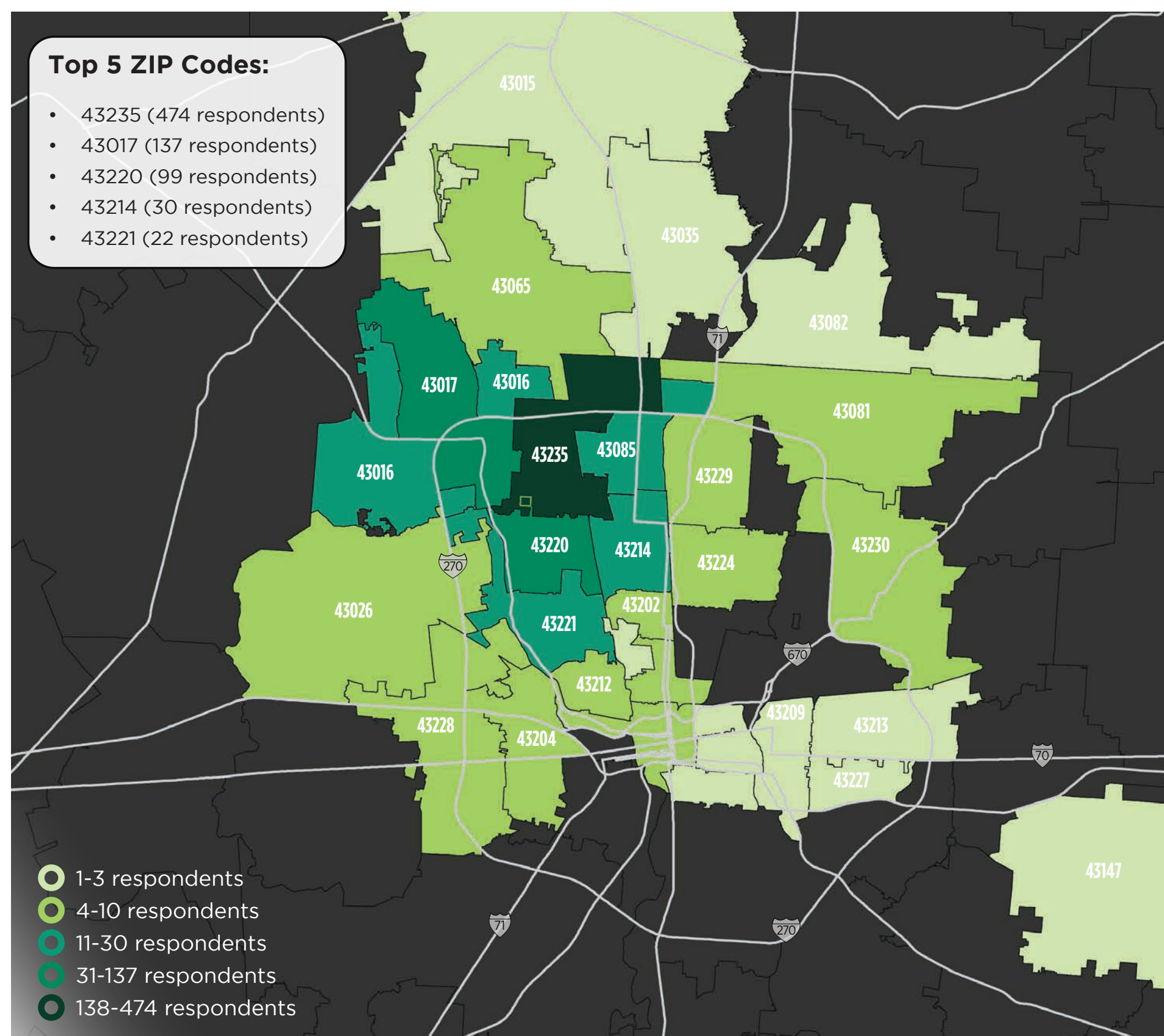
1,171
community members engaged in the process

1,104 survey respondents

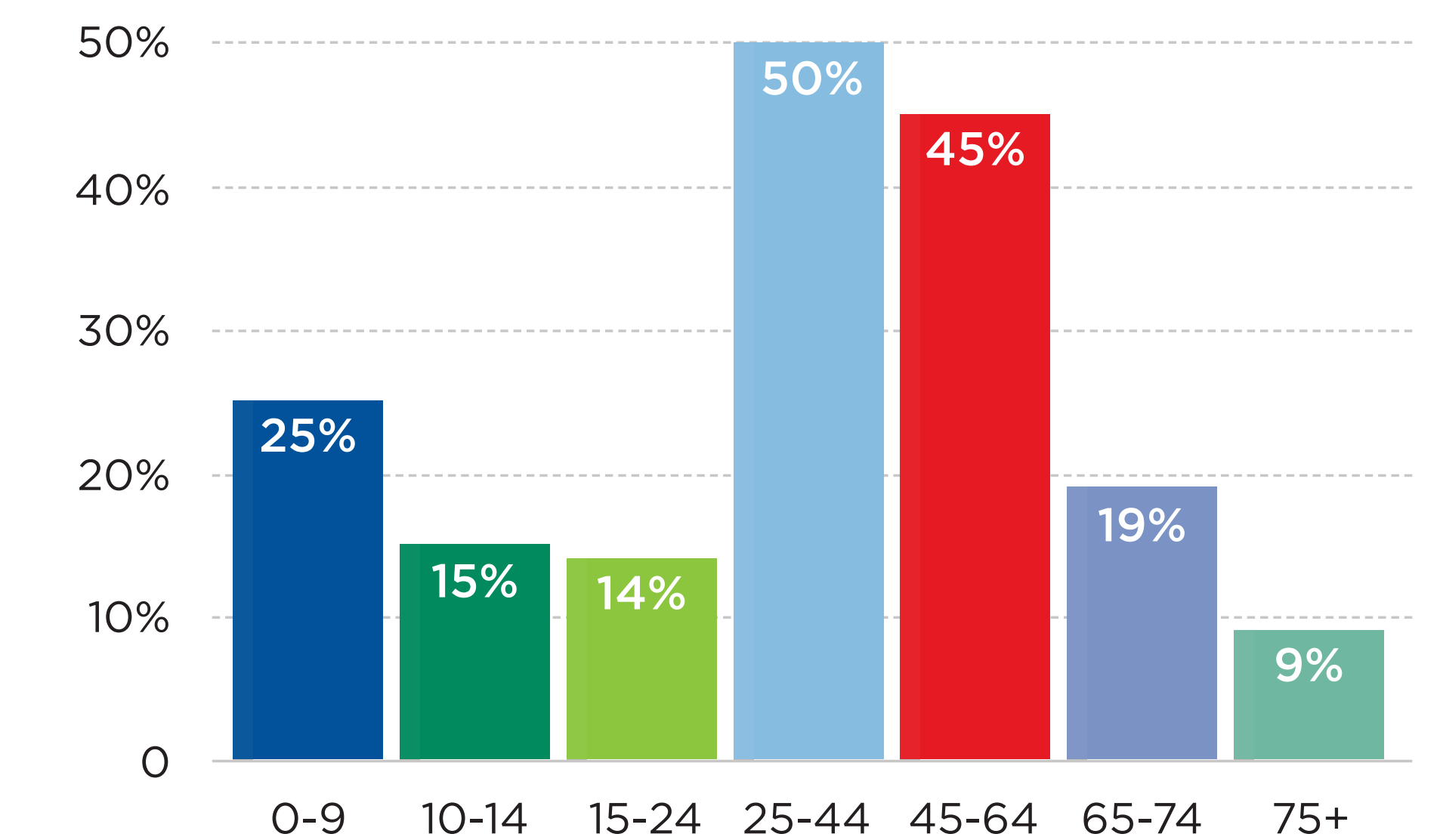
5 neighborhood and stakeholder focus groups

60 Public Walking Tour attendees

In what ZIP code do you live? (n = 910)

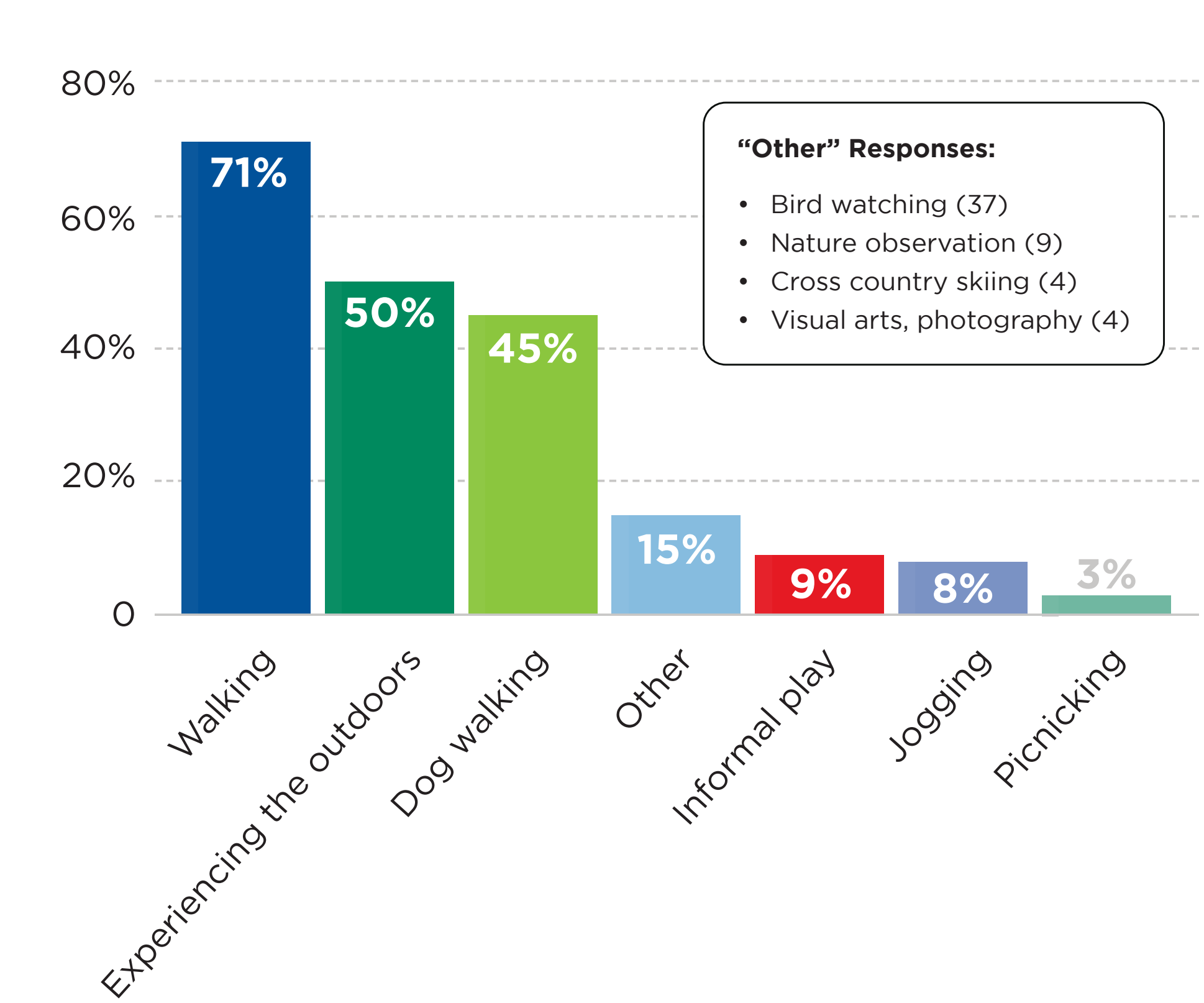


Please select the age categories of all household members who would visit the new West Case Road Park. Include yourself and select all that apply. (n = 910)

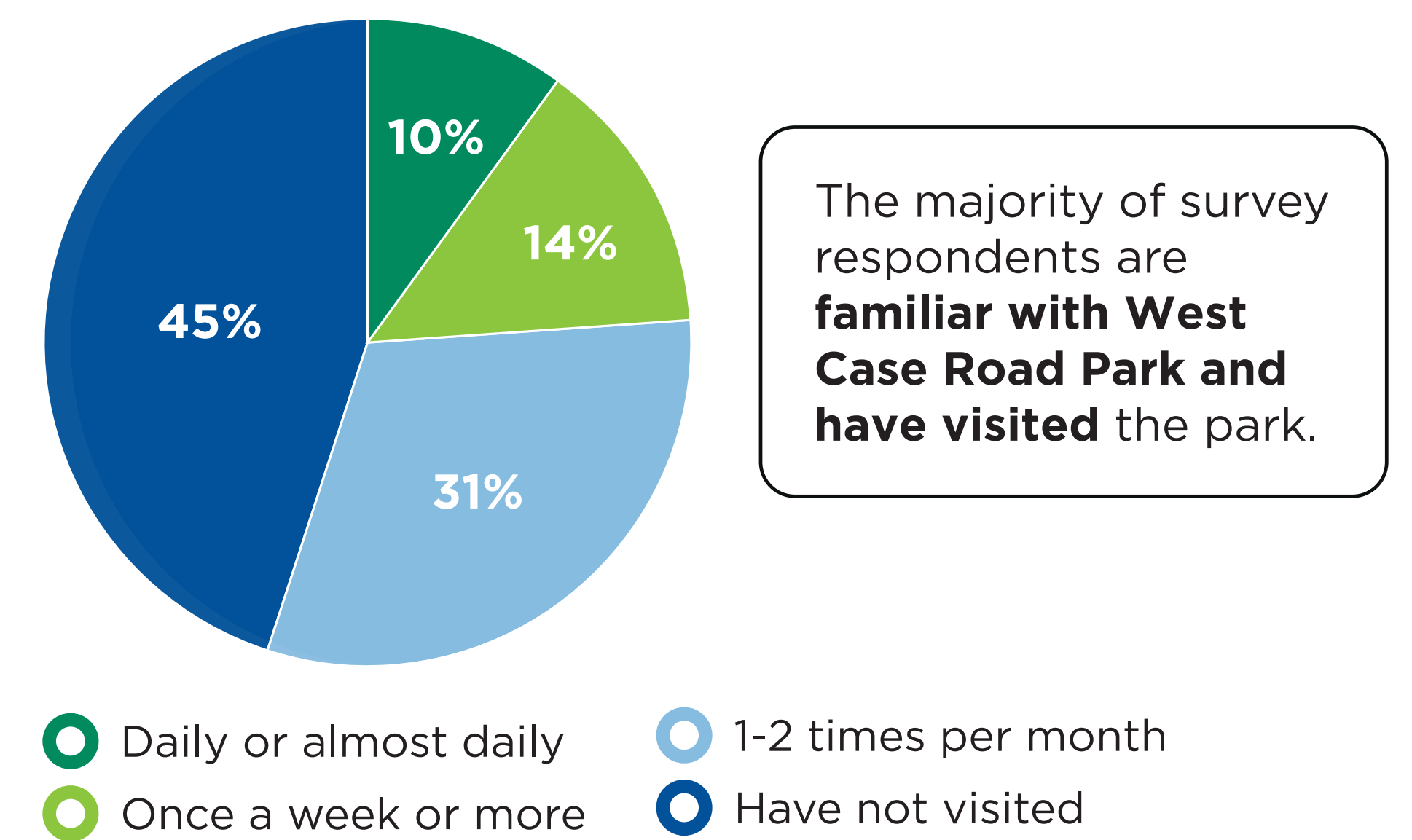


EXISTING PARK USAGE

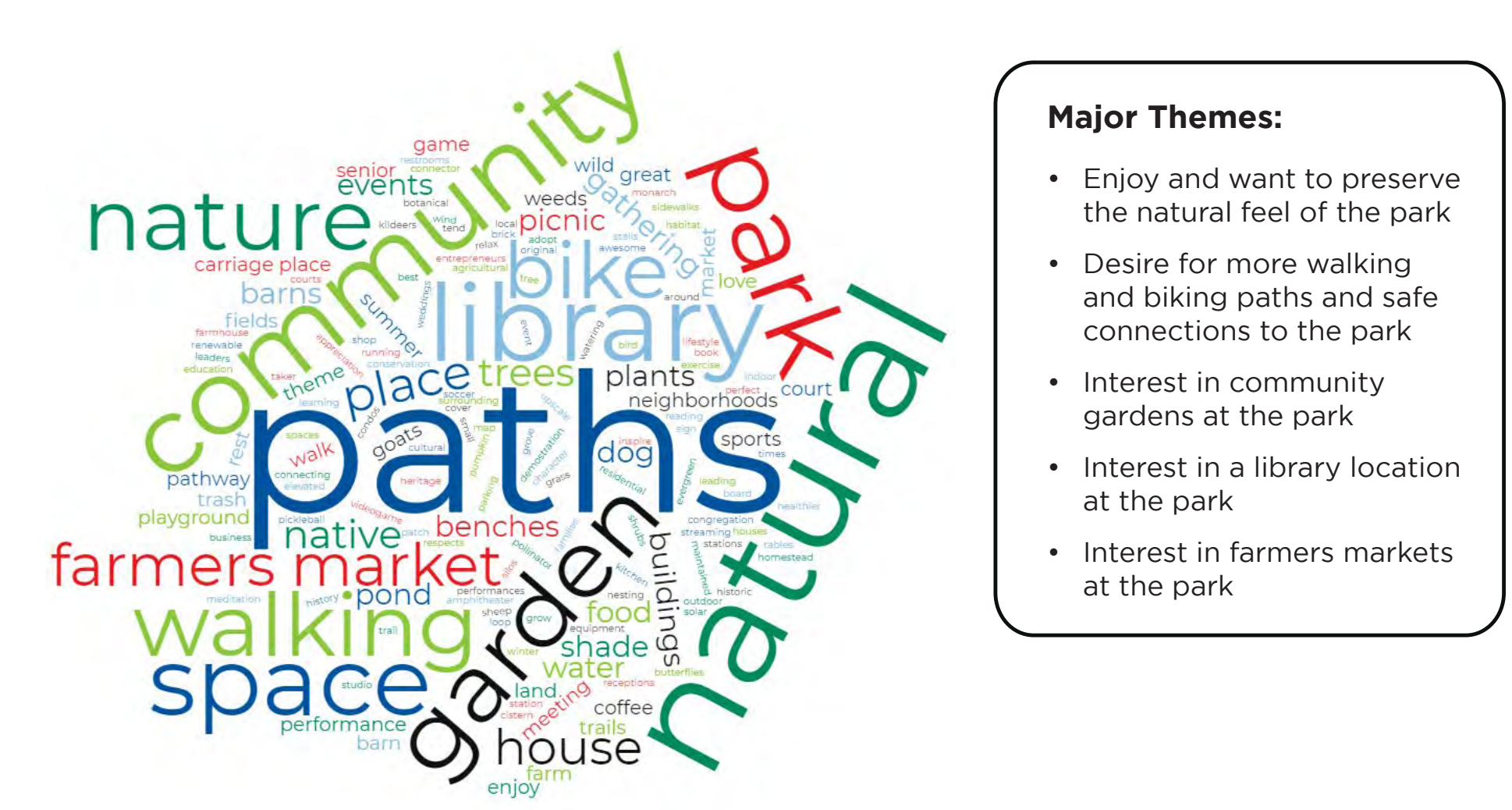
How do you currently use the park? Select all that apply. (n = 509)



How often do members of your household currently visit West Case Road Park? (n = 816)

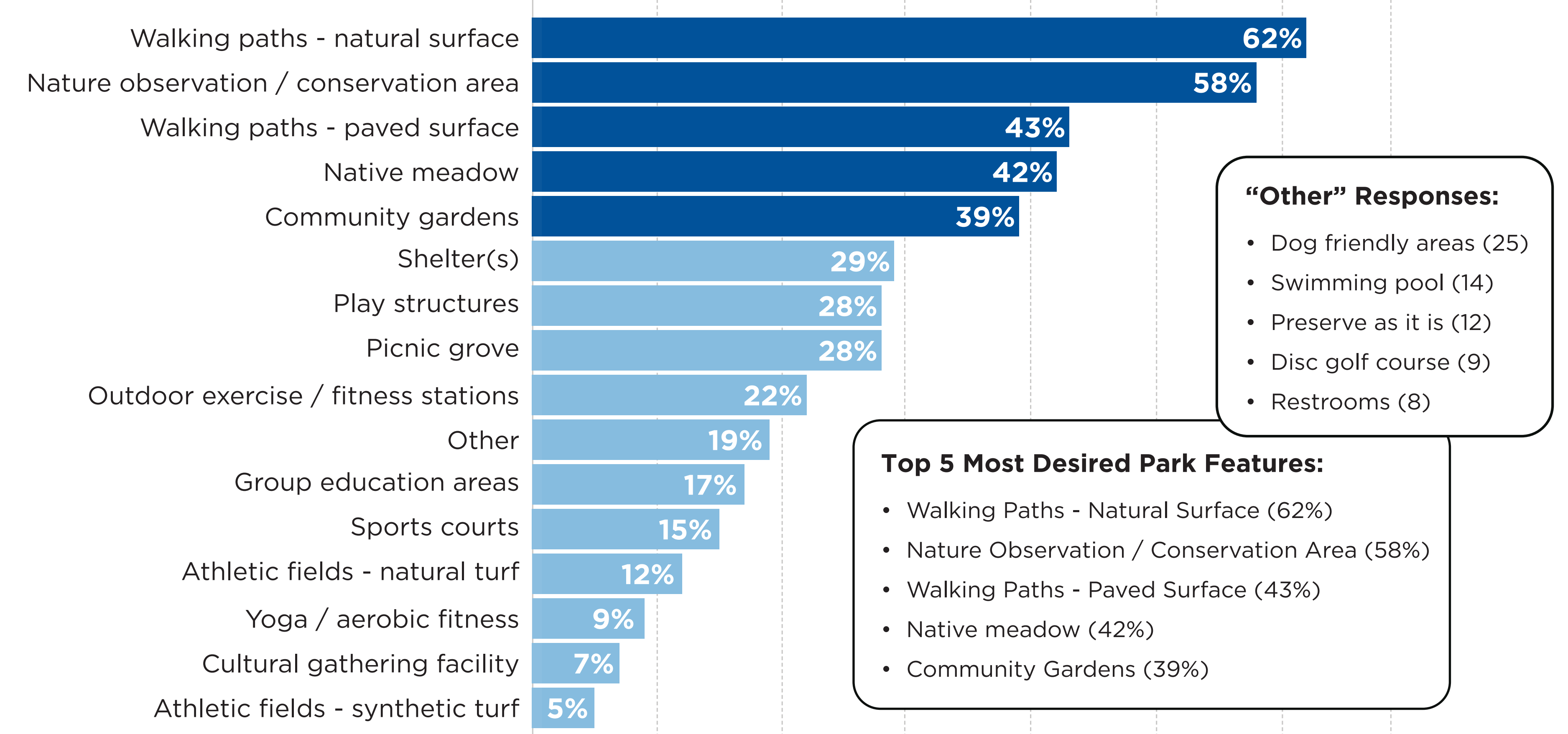


What are the opportunities for West Case Road Park? (n = 54)

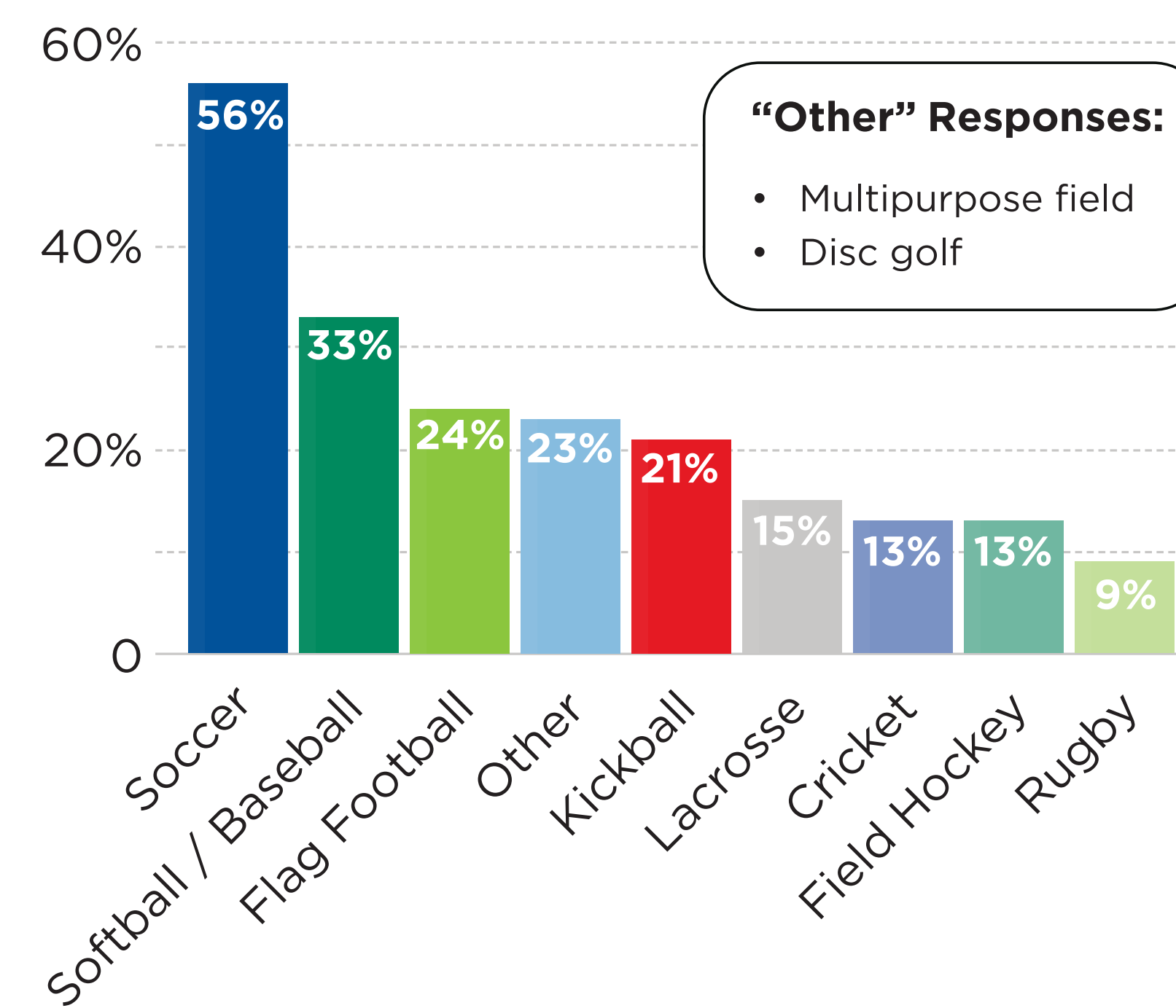


DESIRED PARK AMENITIES AND IMPROVEMENTS

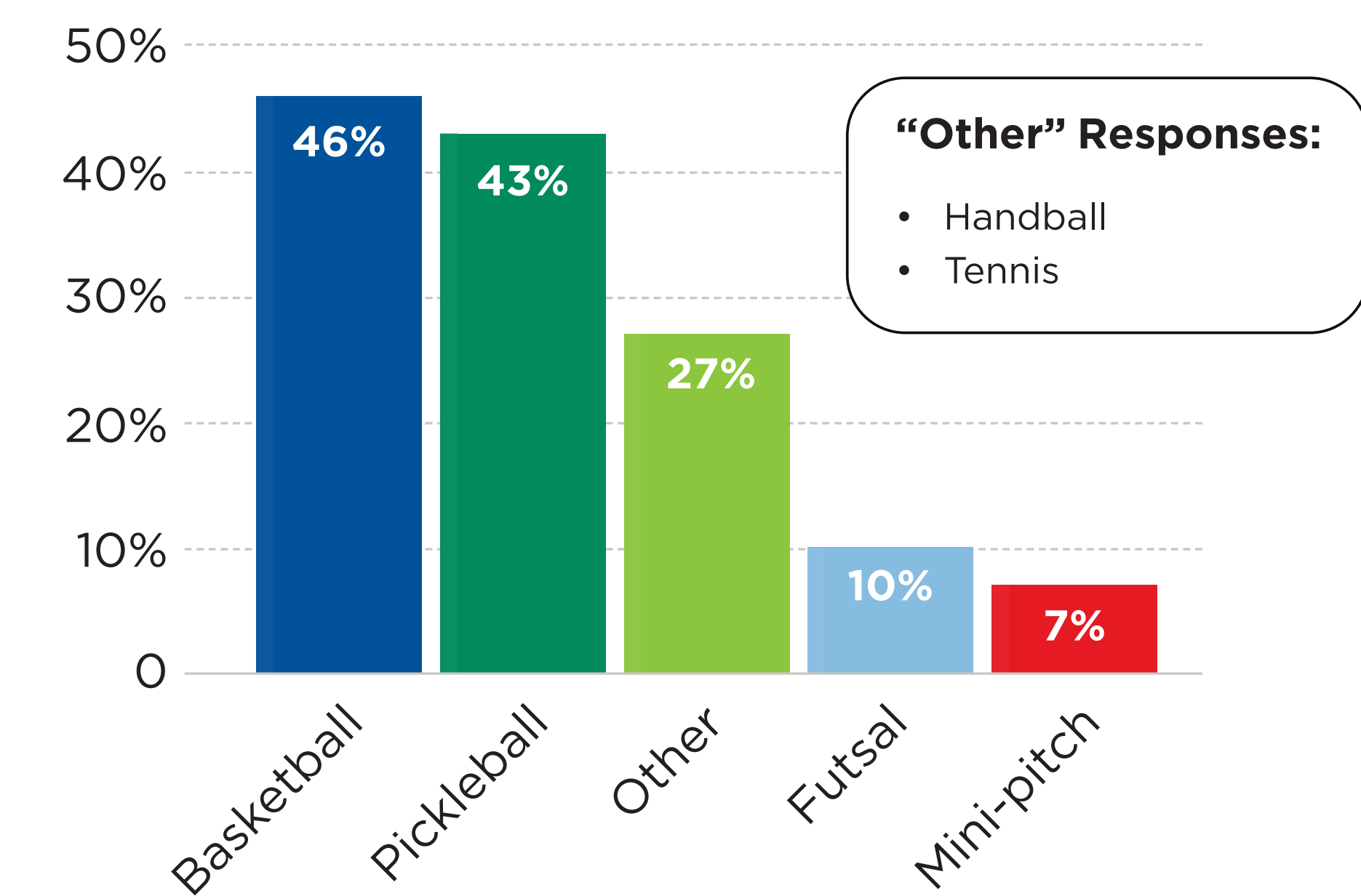
Please select up to 5 park features your household would most like to see at the new West Case Road Park. (n = 946)



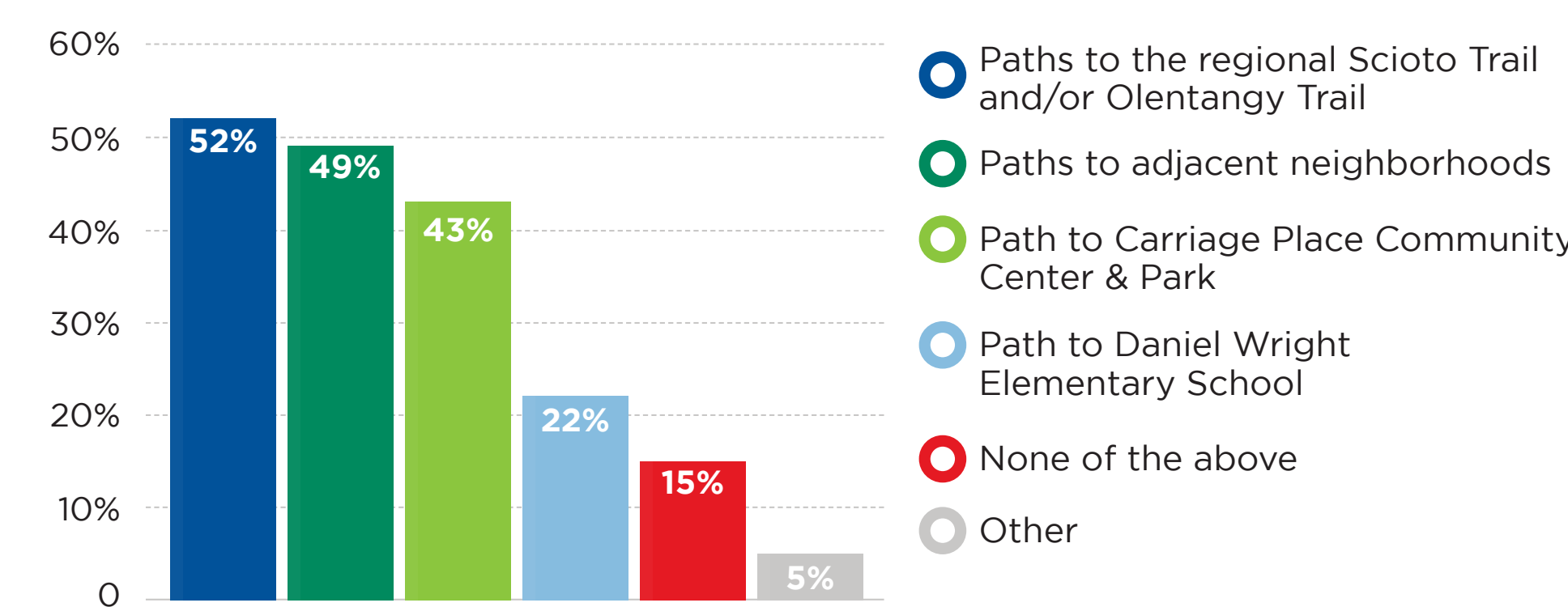
If you selected “Athletic Fields”, please specify the type of use. (n = 203)



If you selected “Sports Courts”, please specify the type of use. (n = 218)



Which of the following connections to West Case Road Park would be important to your household? Select all that apply. (n = 946)



“The pandemic has taught us that we need more covered outdoor places to gather that have options to open windows and doors. It needs to be connected to Carriage Place as an extension of the awesome rec center.”

“This site, the fields to the north as well as the airport are used by rare Upland Sandpipers and other grassland birds. It would be great to preserve this habitat.”

“I really hope you can preserve the existing buildings to be utilized for the community. Repurpose the house for education, community class area, rental space etc.”

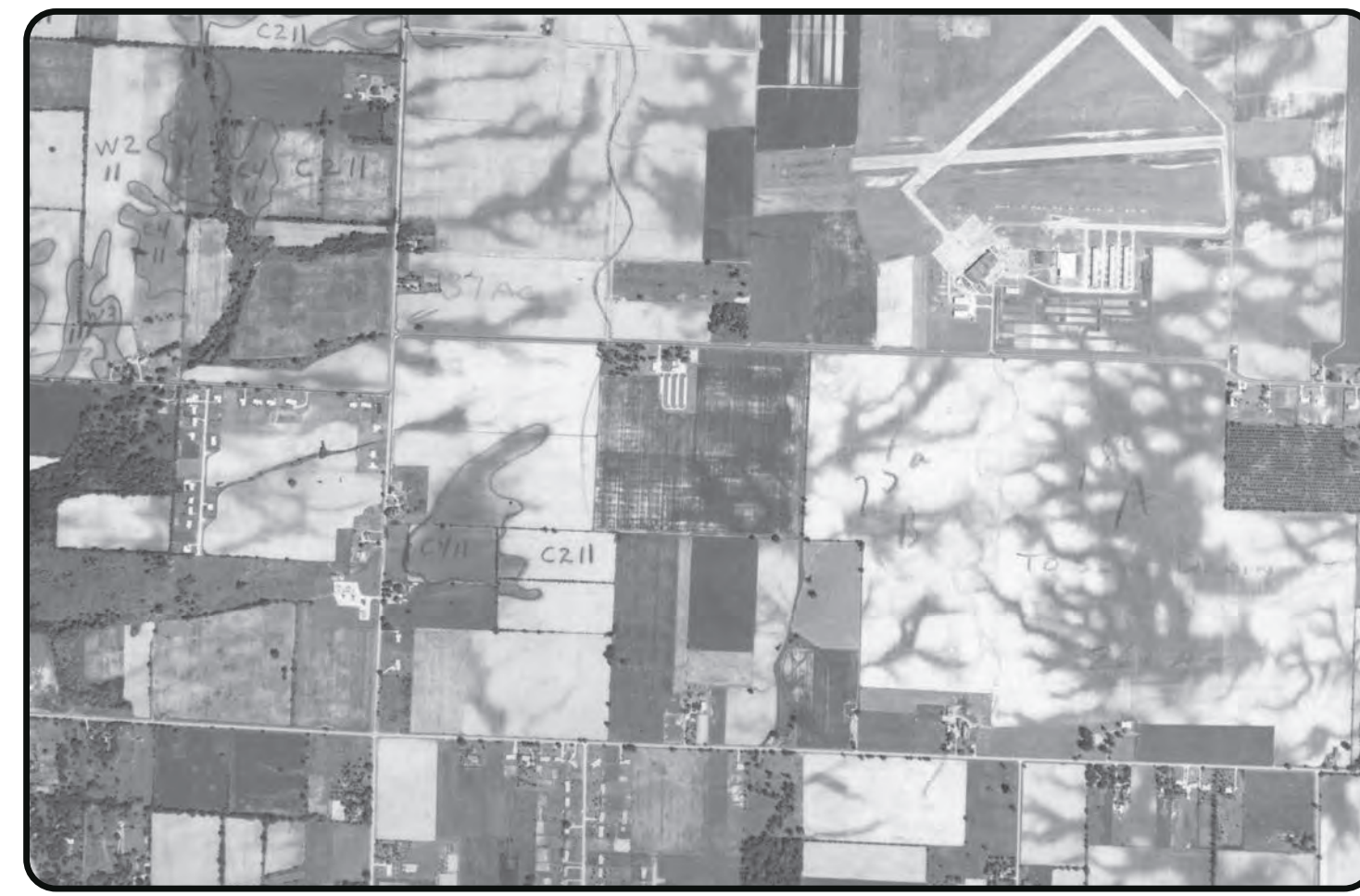
“This space is full of birds, pollinators, small critters and would be best left as natural as possible.”

“Create connectivity and safe routes to parks. East-west connections continue to be challenging including paths to Metro Parks.”

“I love the natural feel to the park along with the paths and variety of birds that can be seen. The park is serene and a great place to unwind with my dogs.”



AIRPORT & AG. EXPO - 1963



SITE AERIAL - 1964



FARM SCIENCE REVIEW - 1972



SITE AERIAL - 1980



SITE AERIAL - 1989



SITE AERIAL - 2019



RED BARN



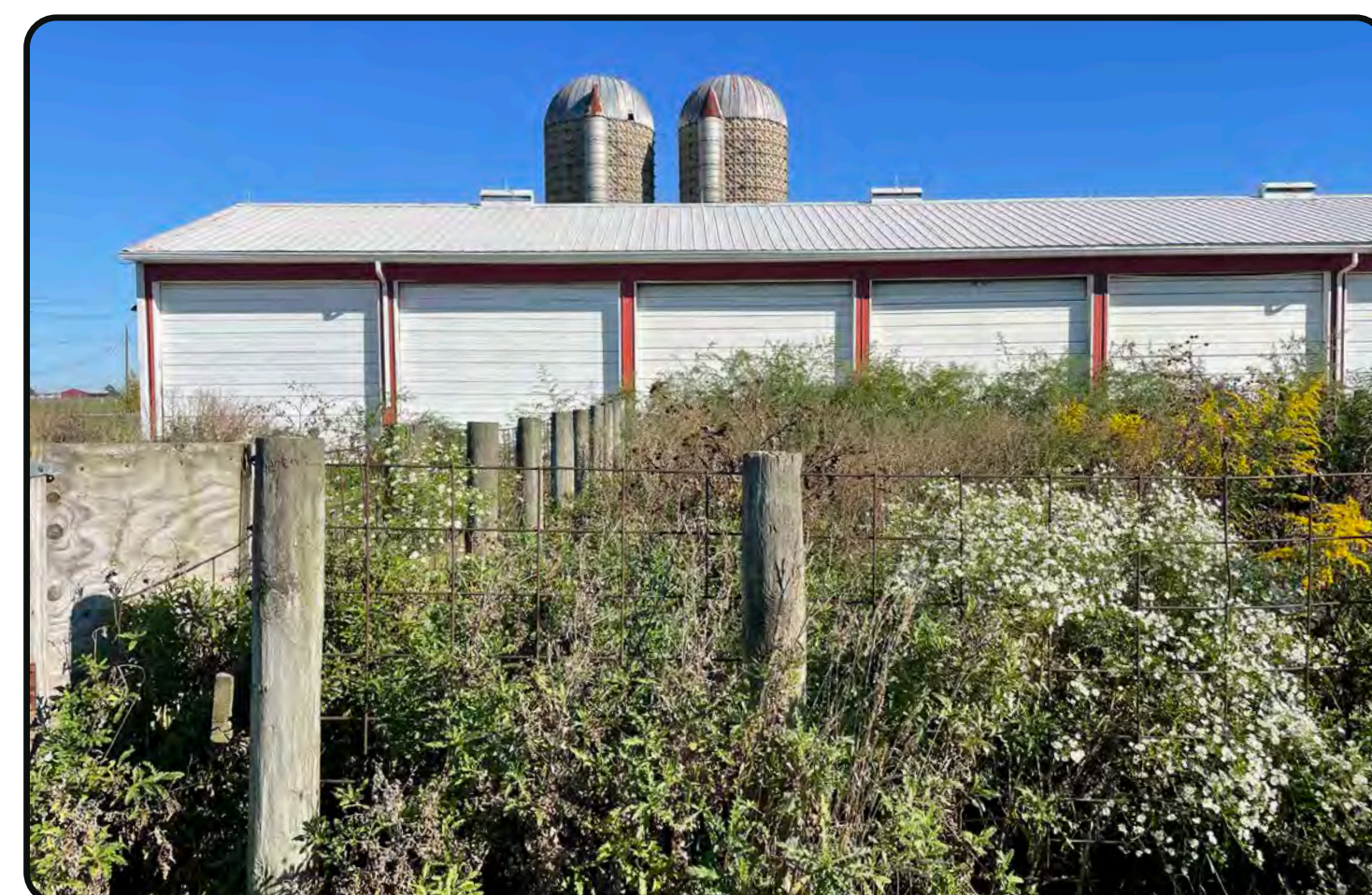
MOWN PATHS



LEAN-TO'S



FARMHOUSE



EXISTING CHARACTER



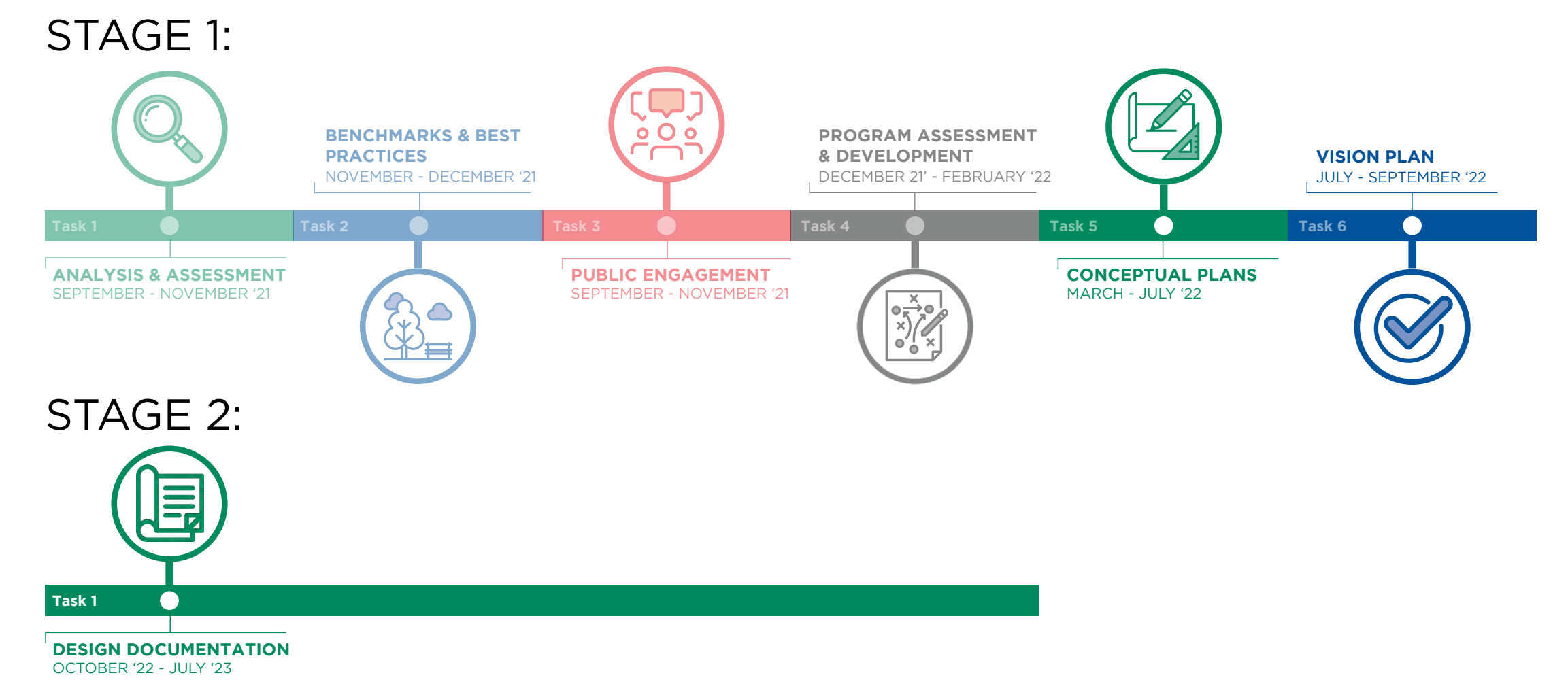
WETLAND

ABOUT

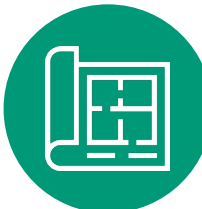


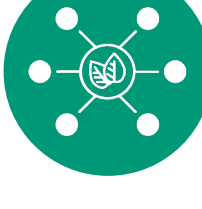


At the end of 2019, Columbus Recreation and Parks Department acquired the OSU Agriculture Extension Sheep Farm at 2425 West Case Road for a new community park. The 58-acre site will become one of the major greenspaces in northwest Columbus. The parkland has a wide range of possibilities—from sports to hiking to nature to special programming—all within a short walk of more than 6,000 residents.

The planning and design process for West Case Park is currently in the concept plan phase. It began by evaluating the goals and missions identified by Columbus Recreation and Parks Department and gathering input from as many residents and stakeholders as possible. As we gathered community input, we also looked at the natural character of the land and its surroundings. This input was all combined into two park design concepts, which you will see presented at the open house today. Your input will help guide our refinement of the concepts and development of a single vision plan for the park!

PROJECT SCHEDULE



GOALS & OBJECTIVES

-  Create a master plan
 - Engage key stakeholders and neighborhoods
 - Consensus-driven program
 - Cost conscious program of amenities
-  Provide Vibrant, Accessible, Multi-Generational Spaces
-  Year-Round Synergy with Community Center
-  Safe & Intuitive Connections to Community
-  Weave Site's History Into Fabric of the Park
-  Develop a Sustainable Park Focused on Maintenance & Stewardship



Coffman Park
 Size: 26 acres
 Facilities: Restrooms, gazebo, playgrounds, basketball court, tennis courts, volleyball court, fishing

Indian Run Falls
 Size: 3.5 acres
 Facilities: walking path, overlooks, boardwalks, shelter houses

Llewellyn Farms Park
 Size: 8 acres
 Facilities: Gazebo, picnic area, tot lot, basketball court, tennis courts, volleyball court

THE MALL AT TUTTLE CROSSING

Hayden Falls Park
 Size: 2 acres
 Facilities: Nature preserve, woods and wildlife area

Carriage Place Community Center
 Size: 13 acres
 Facilities: Ball diamonds, sports courts, picnic area, playground, walking trail, classrooms, gymnasium, kitchen

Size: 58 acres
WEST CASE PARK

Northwest Park
 Size: 22 acres
 Facilities: Ball diamonds, multi-use path, nature area, picnic area, playground, sports fields, shelterhouse

Burbank Park
 Size: 7 acres
 Facilities: Sports fields, multi-use paths, shelterhouse, drinking fountains

Sawmill Wildlife Education Area
 Size: 18 acres
 Facilities: Paved walking trails, boardwalk walking trails, outdoor education

Linworth Park
 Size: 13 acres
 Facilities: Ball diamond, basketball court, drinking fountain, picnic area, playground, shelterhouse, soccer field, tennis courts, tot lot, trail

Godown Dog Park
 Size: 10 acres
 Facilities: Pet exercise area, park, benches

Antrim Park
 Size: 123 acres
 Facilities: Sports fields, sports courts, playground, shelterhouse, walking trail, woods, and wildlife area

Northcrest Park
 Size: 18 acres
 Facilities: Athletic fields, ball diamonds, basketball court, picnic area, playground, tennis court

Anheuser-Busch Sports Park
 Size: 54 acres
 Facilities: Athletic complex, athletic fields, ball diamonds

Whetstone Park
 Size: 13 acres
 Facilities: Floral displays, gardens, picnic area, shelterhouse, walking trail, woods and wildlife area

PERRY PARK

BRIDGE PARK

SUN SHOPPING CENTER

OSU DON SCOTT AIRPORT

WEST CASE ROAD

BETHEL ROAD
CENTENNIAL HIGH SCHOOL



OLENTANGY PLAZA SHOPPING CENTER

HENDERSON ROAD

WHETSTONE PARK

3 | NEIGHBORHOOD AMENITIES

KEY

-  VEHICULAR ACCESS POINT
-  PEDESTRIAN ACCESS POINT

OSU DON SCOTT AIRPORT

WEST CASE ROAD

SAWMILL ROAD

MISTY MEADOWS

TROTTER'S CHASE CONDOMINIUMS

BETHEL VILLAGE CONDOMINIUMS

STERLING PLACE APARTMENTS

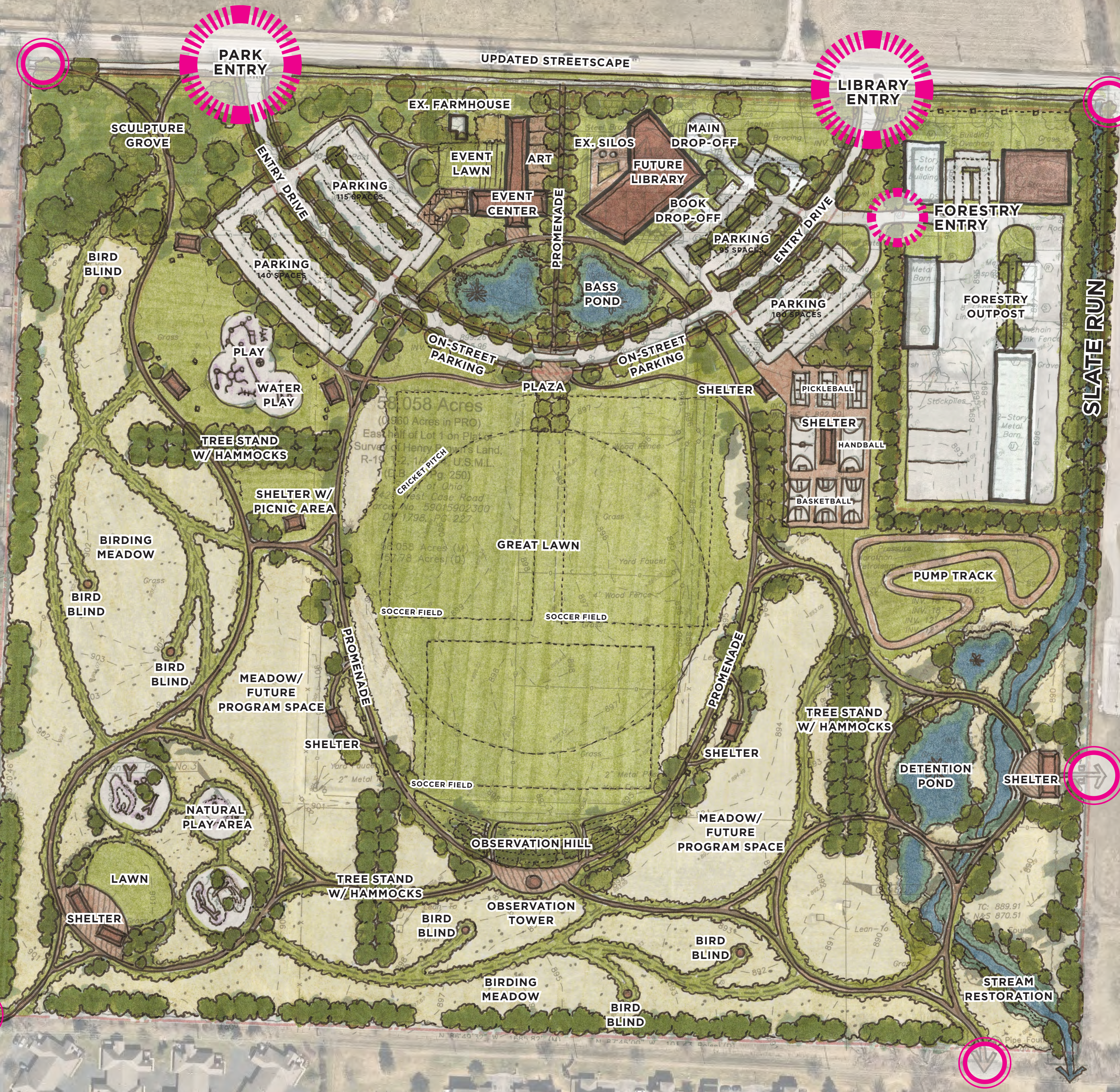
BETHEL COMMONS

DANIEL WRIGHT ELEMENTARY

CARRIAGE PLACE COMMUNITY CENTER


RESLER DRIVE

TRAIL CONNECTOR PATH

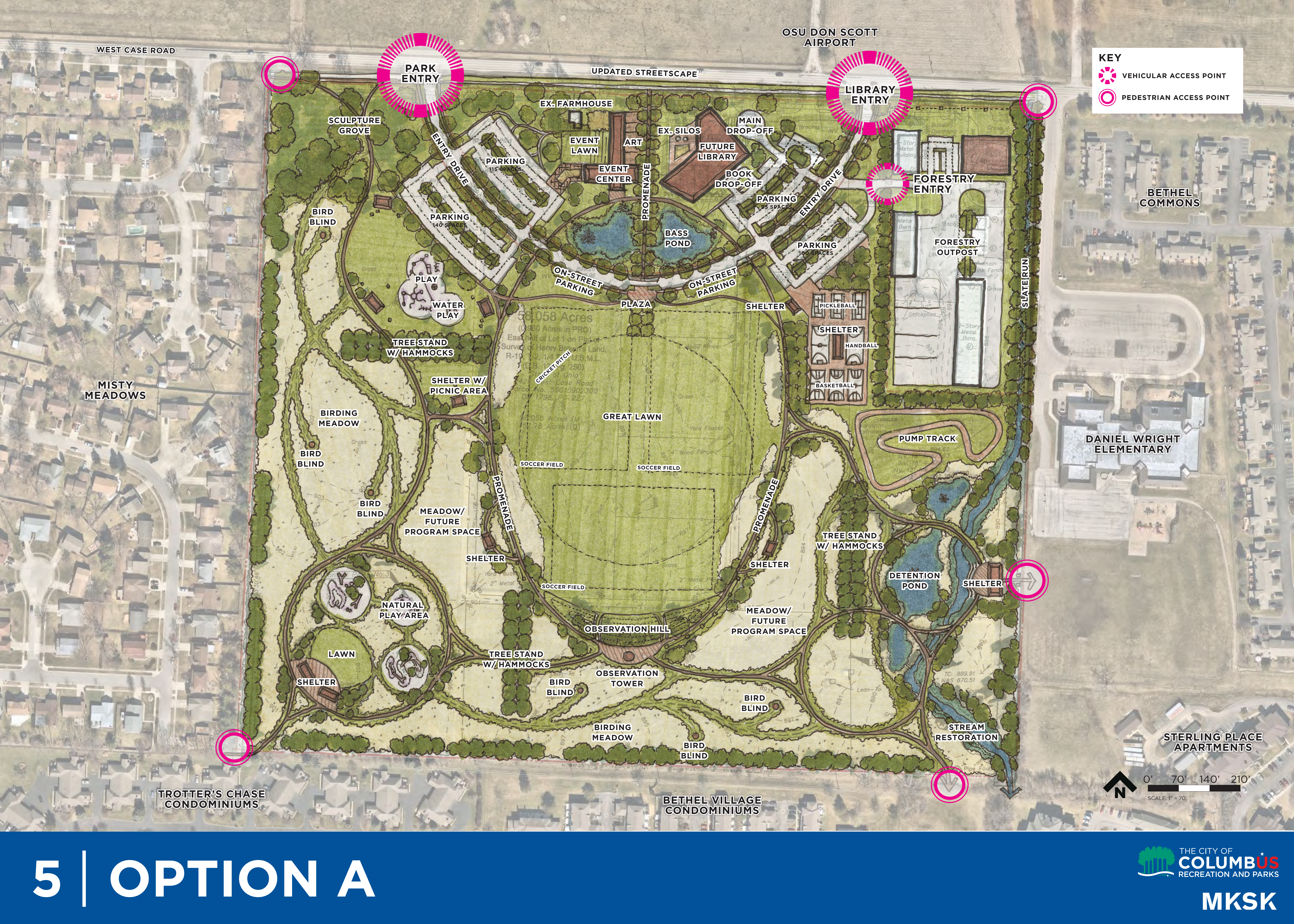


0' 100' 200' 300'

SCALE: 1" = 100'



4 | OPTION A



KEY

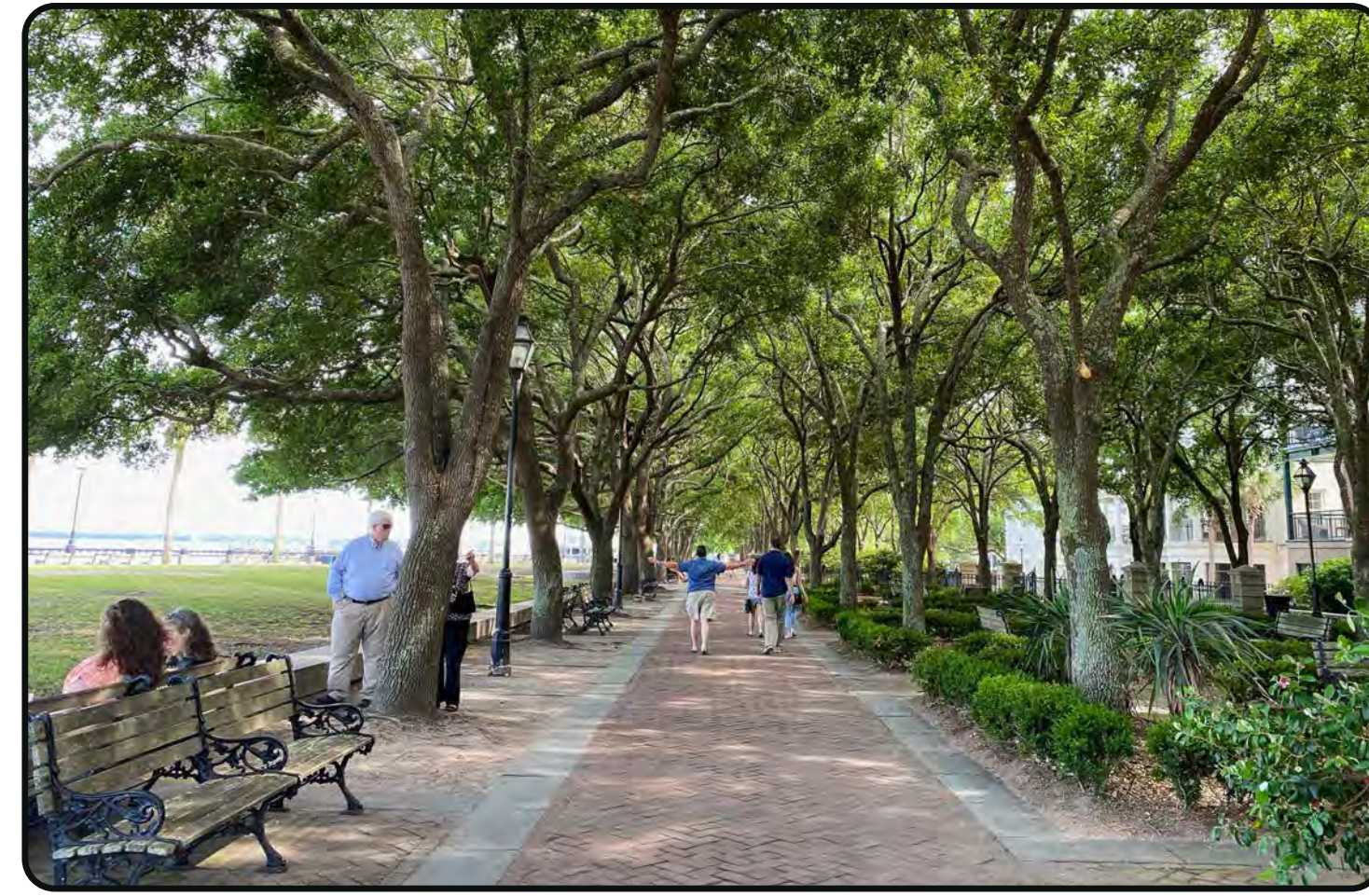
- VEHICULAR ACCESS POINT
- PEDESTRIAN ACCESS POINT

0' 70' 140' 210'

SCALE: 1" = 70'

5 | OPTION A

ECOLOGY



PROMENADE
Central Promenade Focuses Views and Helps Organize Park



ADAPTIVE REUSE
Retrofitting of Historic Architecture

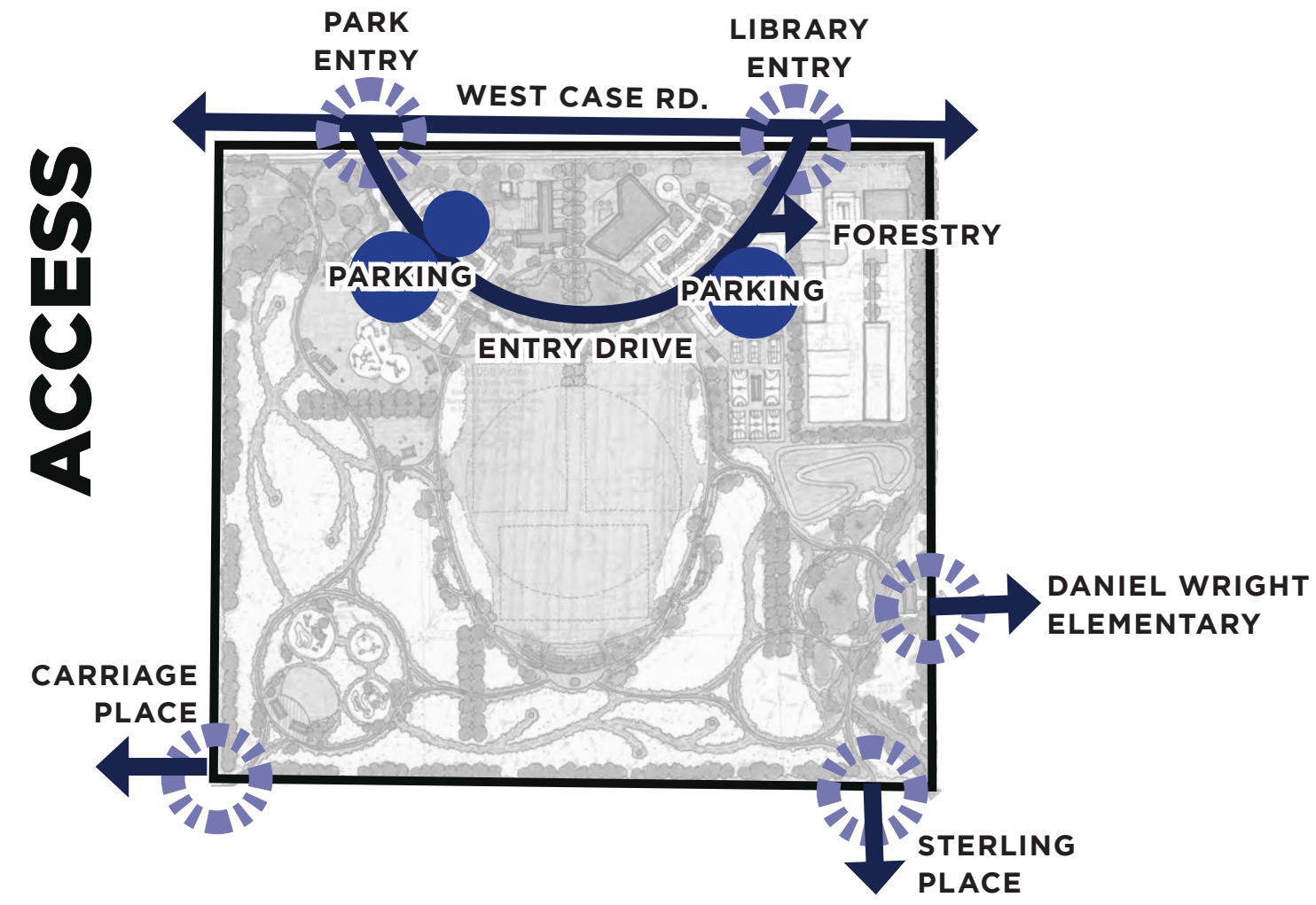


ARCHITECTURE
Integration of Existing, Iconic Site Elements With New Architecture



COURTS
Offer Opportunities for Visitors to Engage in Tennis, Pickleball, Basketball and Handball

ACCESS



GREAT LAWN
Flexible Open Space for Sports, Events and Park Visitors



NATURAL WALKING PATHS
Mown Paths Maintain Character of Site While Creating Experiential Paths Through Meadow

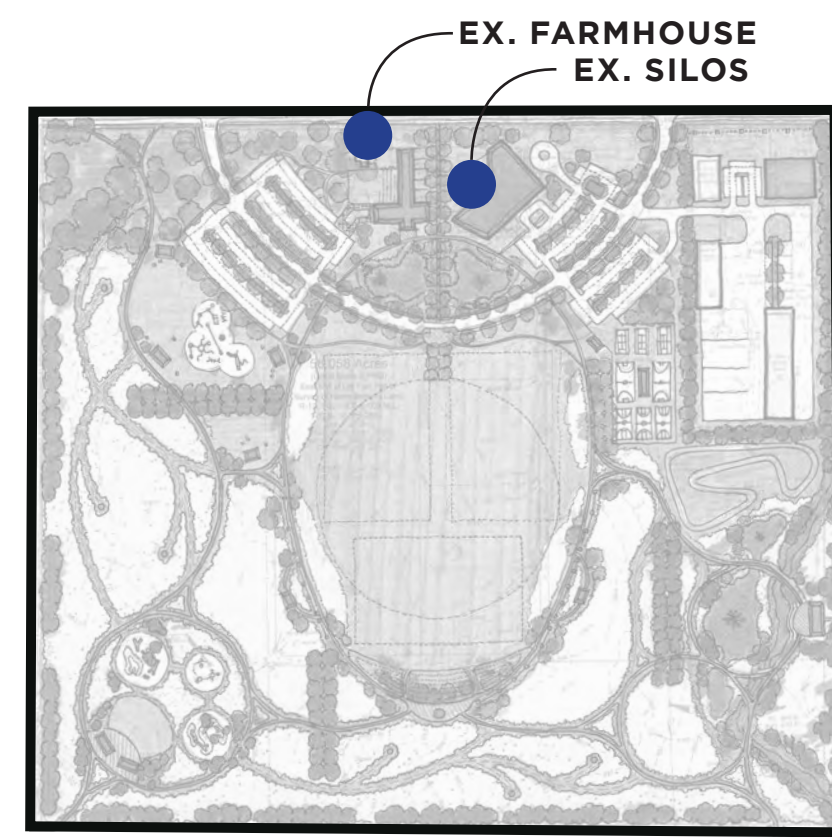


BIRD BLIND
Provides Birders a Chance to Birdwatch Without Disturbing Wildlife



PUMP TRACK
Paved Trails Over Terrain Offer Bikers Challenging Biking Experience

IDENTITY



OBSERVATION DECK
Structure at South End of Great Lawn Offers Opportunities for Bird and Plane Watching



NATURAL PLAY AREA
Informal Play Features are Integrated into Native Meadow

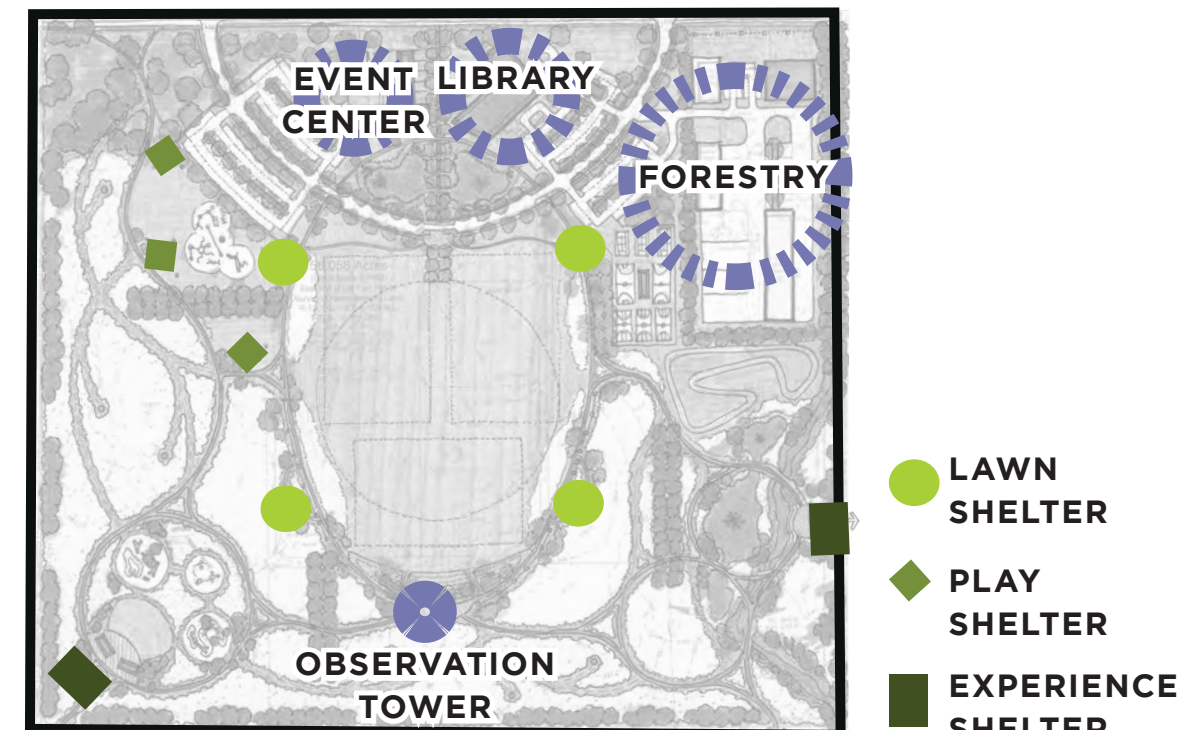


EVENT PLAY
Play Structure Along Loop Road Provides Accessible, All-Ages Play



OBSERVATION MOUND
Landforms Frame Views and Provide Spaces to Sit and Observe Airport Activity

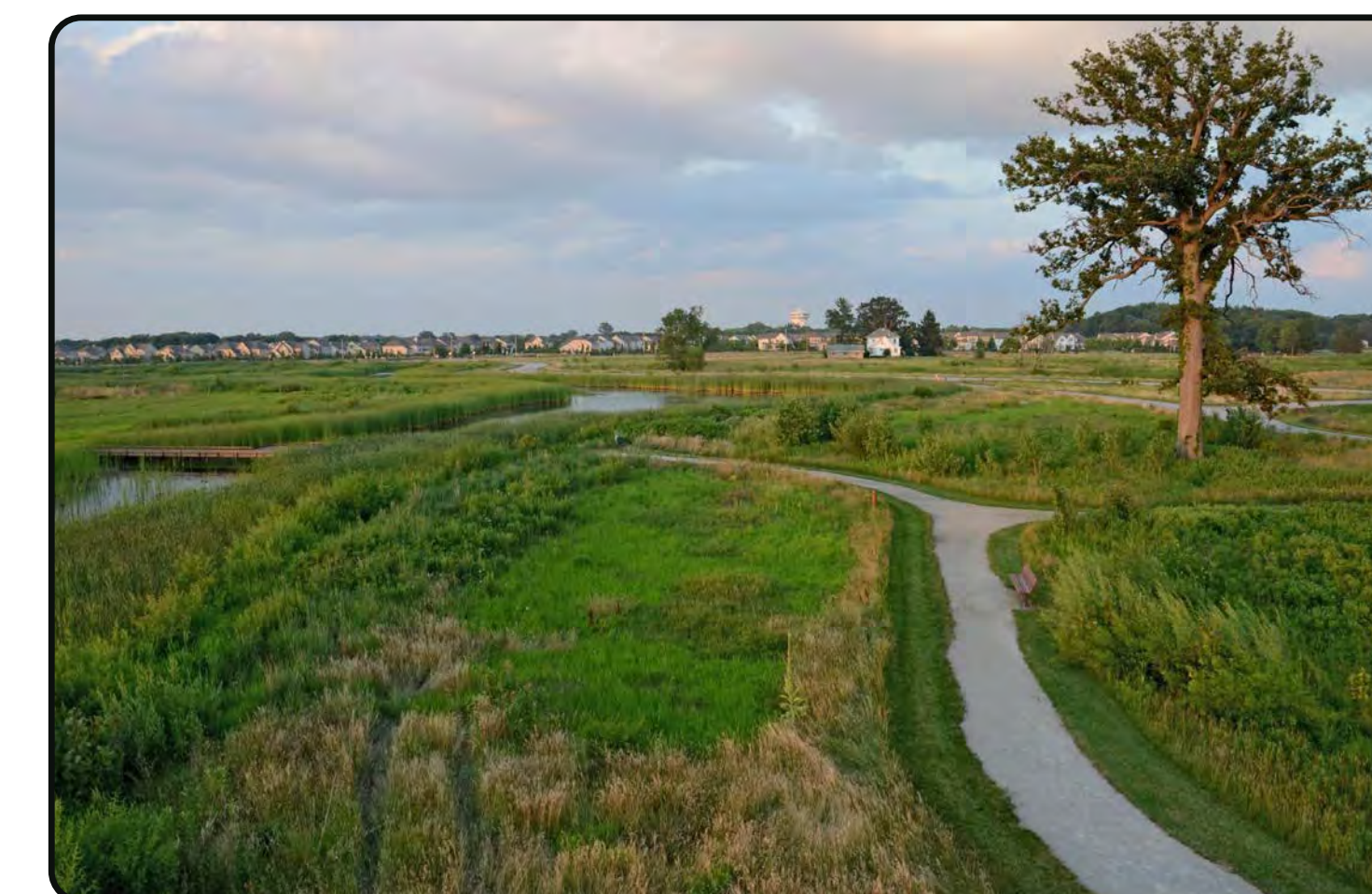
ARCHITECTURE



DETENTION POND
Provide Stormwater Management While Offering Unique Water Experiences



POND SHELTER
Provides Visitors Shade and Shelter Adjacent to Pond and Wetlands

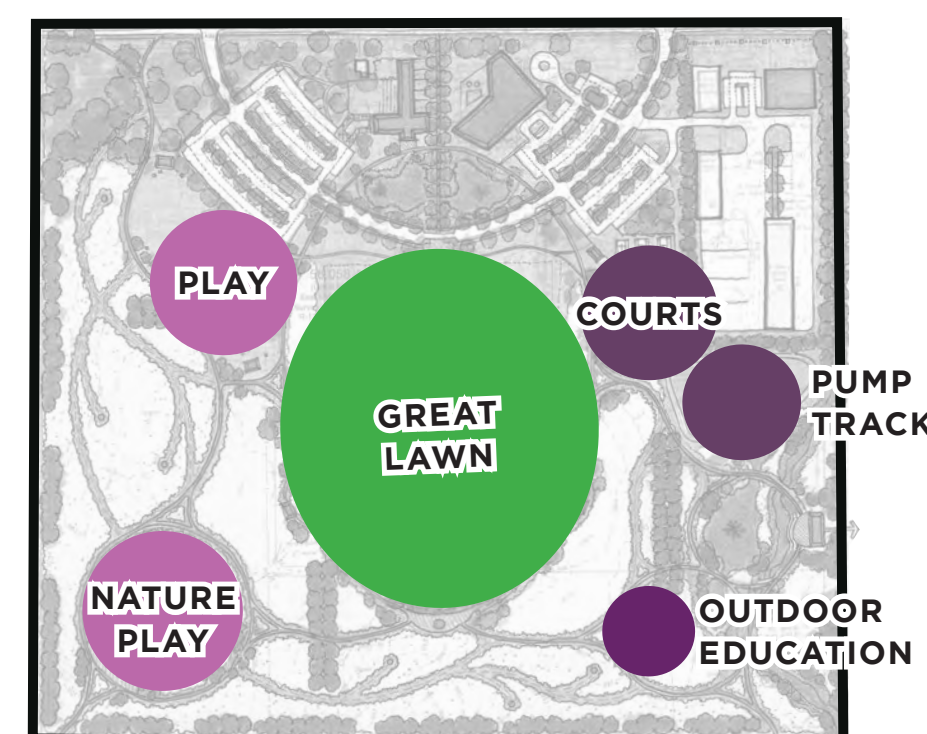


STREAM RESTORATION
Stream Rerouted and Enhanced with Native Wet Meadow Planting

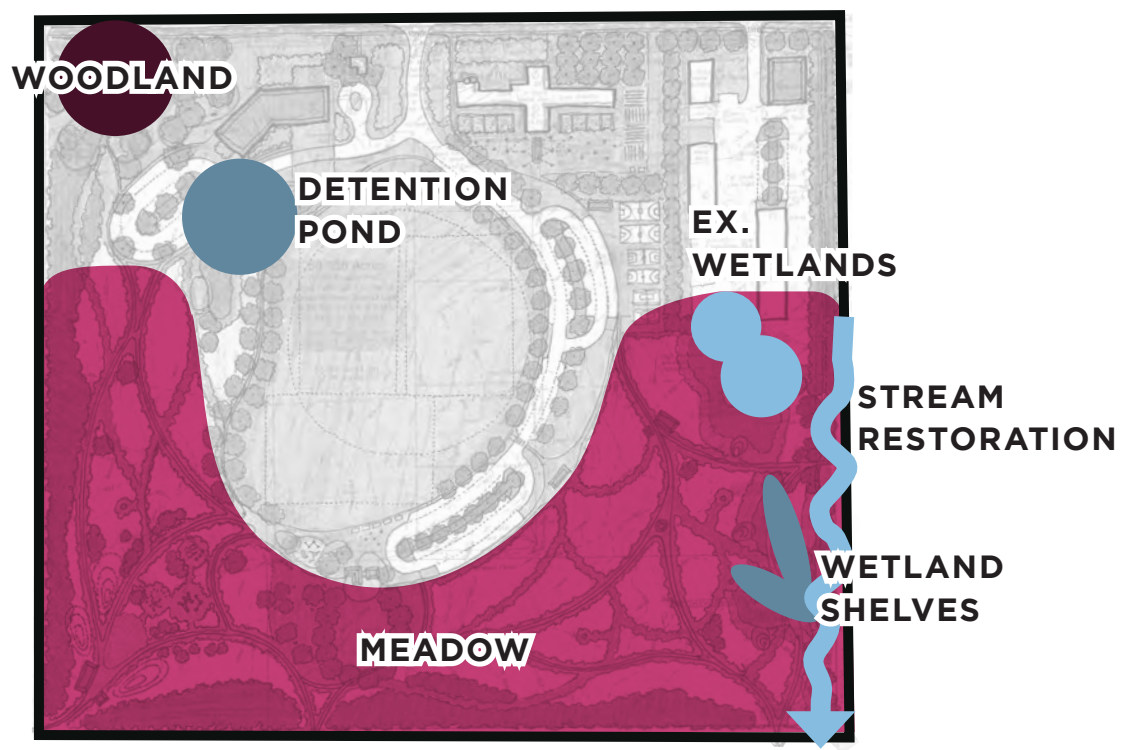


OUTDOOR EDUCATION
Boardwalks Allow Visitors to Get Close-Up Views of Stream and Ponds

PROGRAM



ECOLOGY



ENTRY DRIVE
Meandering, Tree Lined Road



ARCHITECTURE
Preserve Existing Buildings

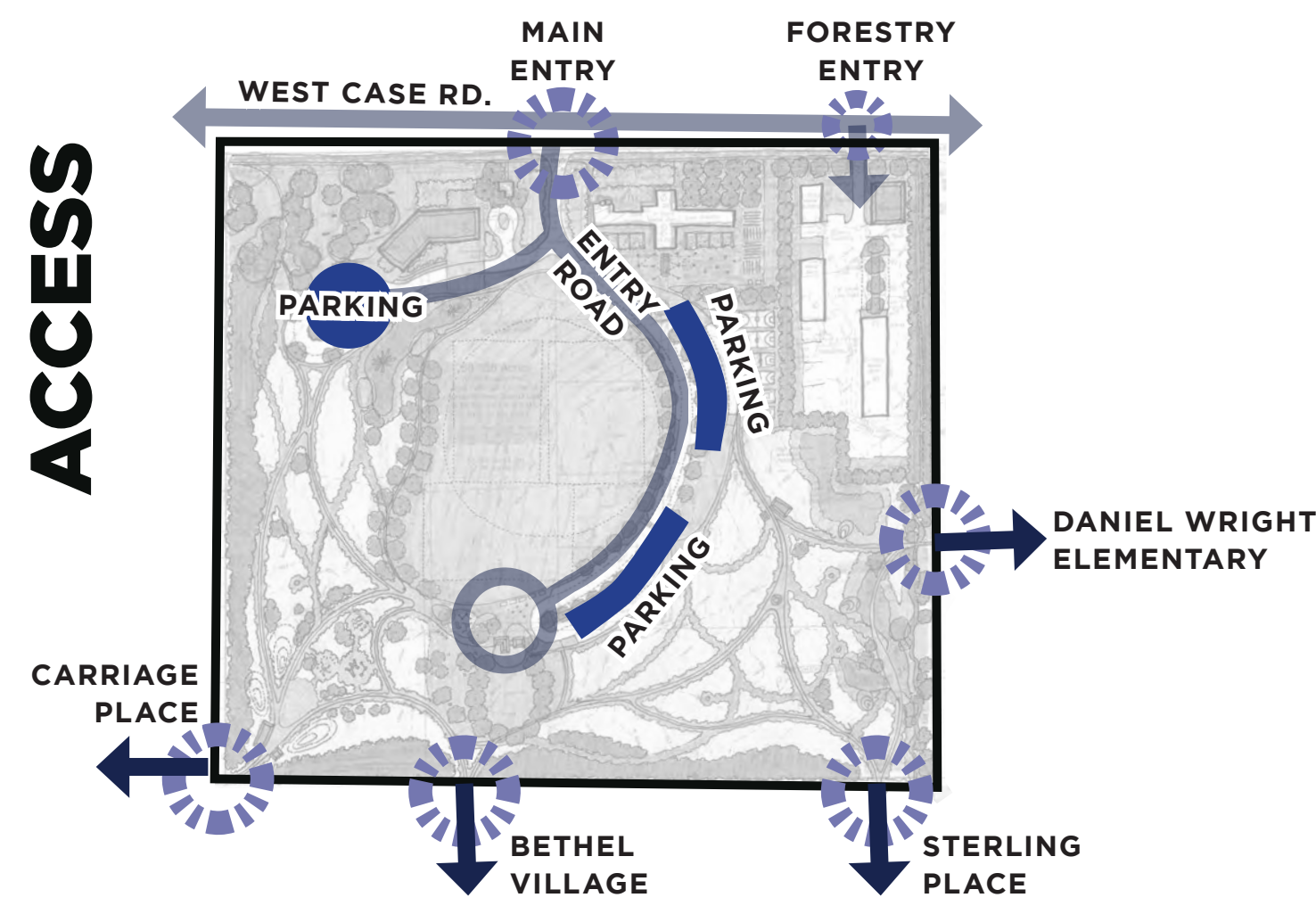


GATHERING SPACE
Movable Seating, Feature Lighting and Open Plaza Offers Flexible Space for Community



COURTS
Offer Opportunities for Visitors to Engage in Tennis, Pickleball, Basketball and Handball

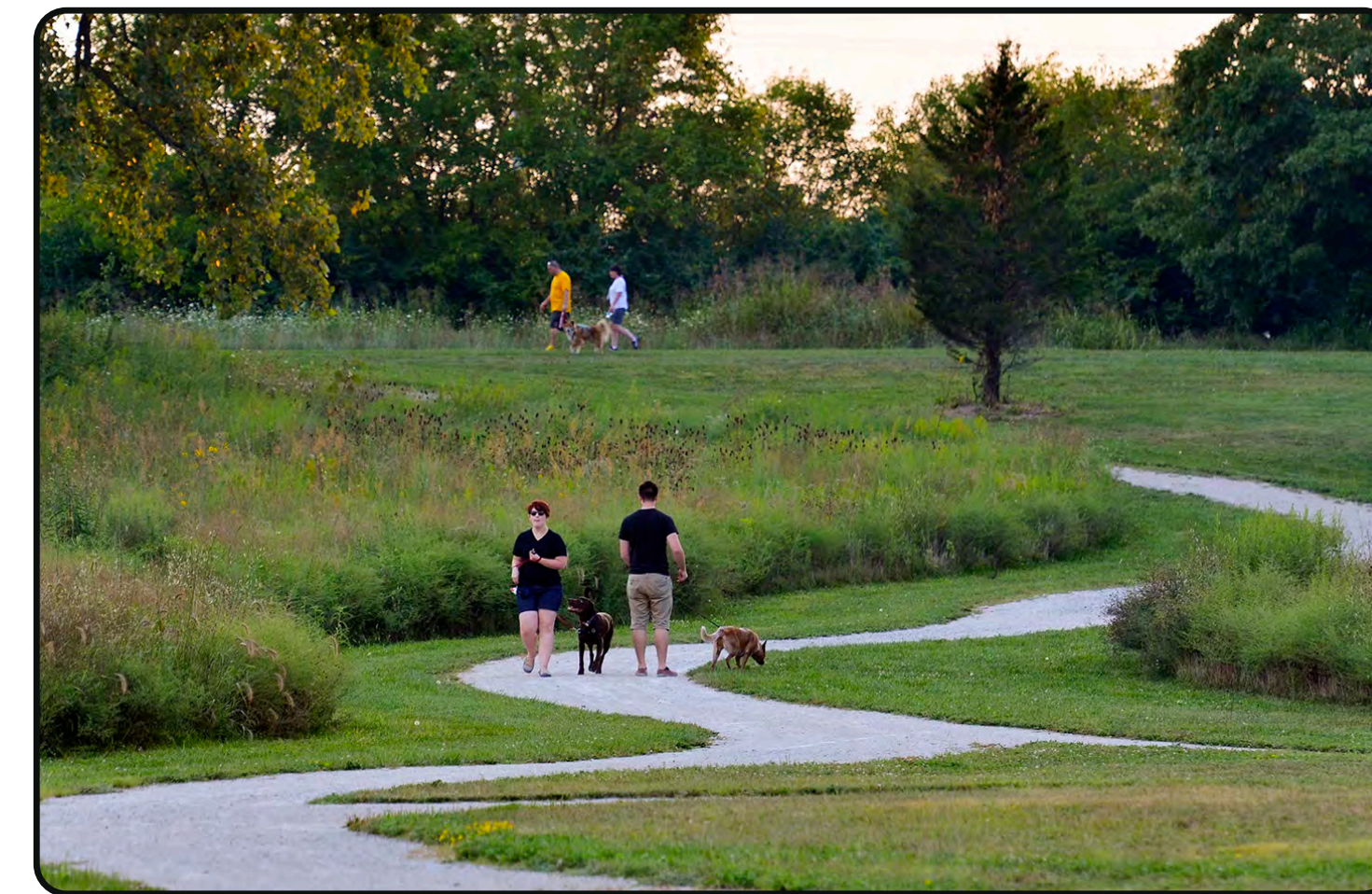
ACCESS



GREAT LAWN
Flexible Open Space for Sports, Events and Park Visitors



NATURAL WALKING PATHS
Mown Paths Maintain Character of Site While Creating Experiential Paths Through Meadow

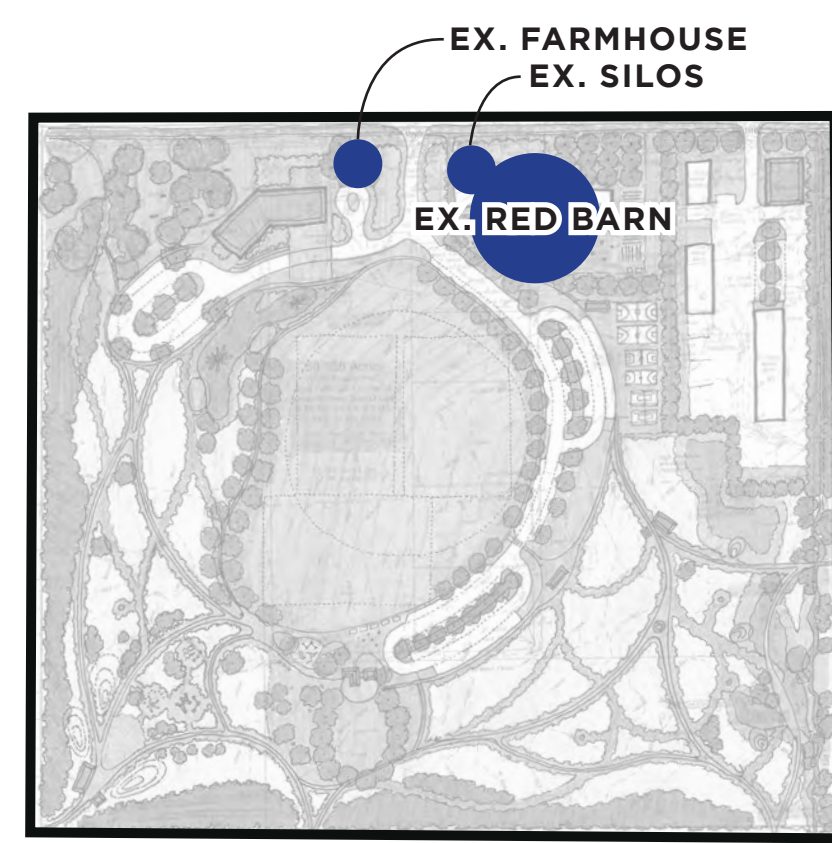


ACCESSIBLE WALKING PATHS
Paved Paths Create a Central, Accessible Loop Through Park for All Visitors



POLLINATOR GARDENS
Cultivated Gardens Provide Space to Learn About Plants While Attracting Pollinators

IDENTITY



OBSERVATION DECK
Structure Within Native Meadows Offers Opportunities for Bird and Plane Watching



NATURAL PLAY AREA
Informal Play Features are Integrated Into Native Meadow

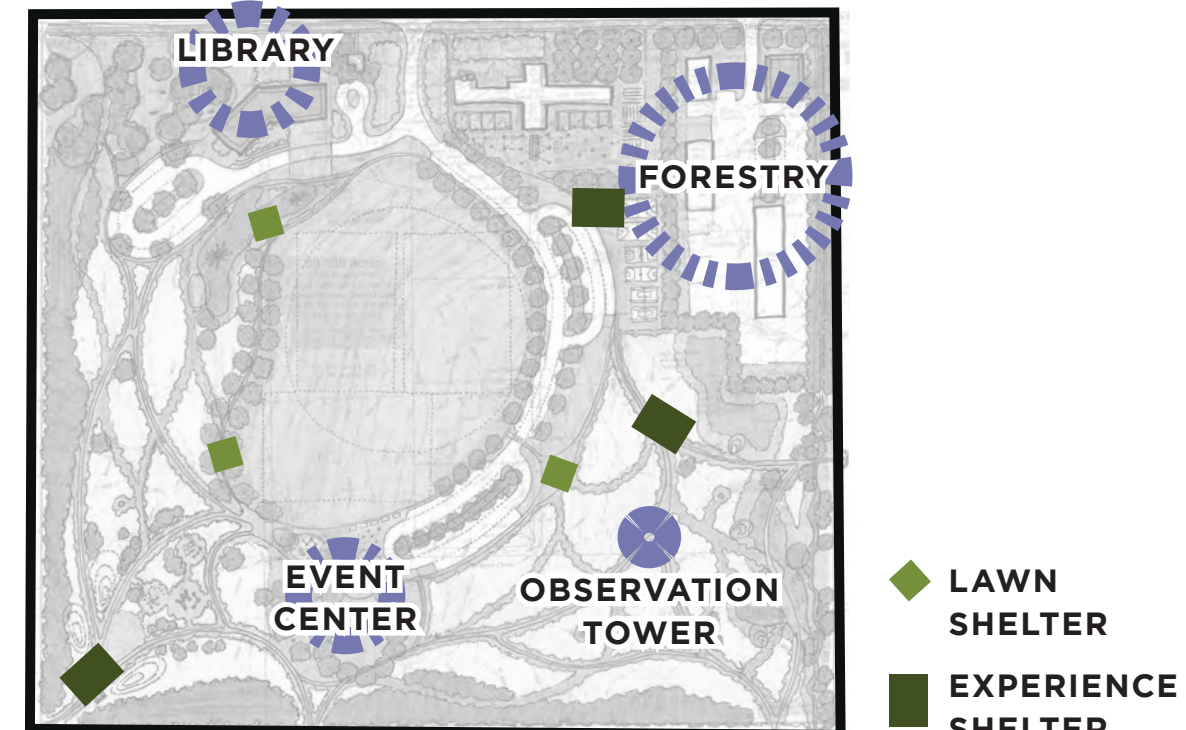


EVENT PLAY
Play Structure Next to Event Center Provides Accessible, All-Ages Play



SHELTER
Park Shelters Offer Shaded Storage, Picnic and Restroom Opportunities for the Park

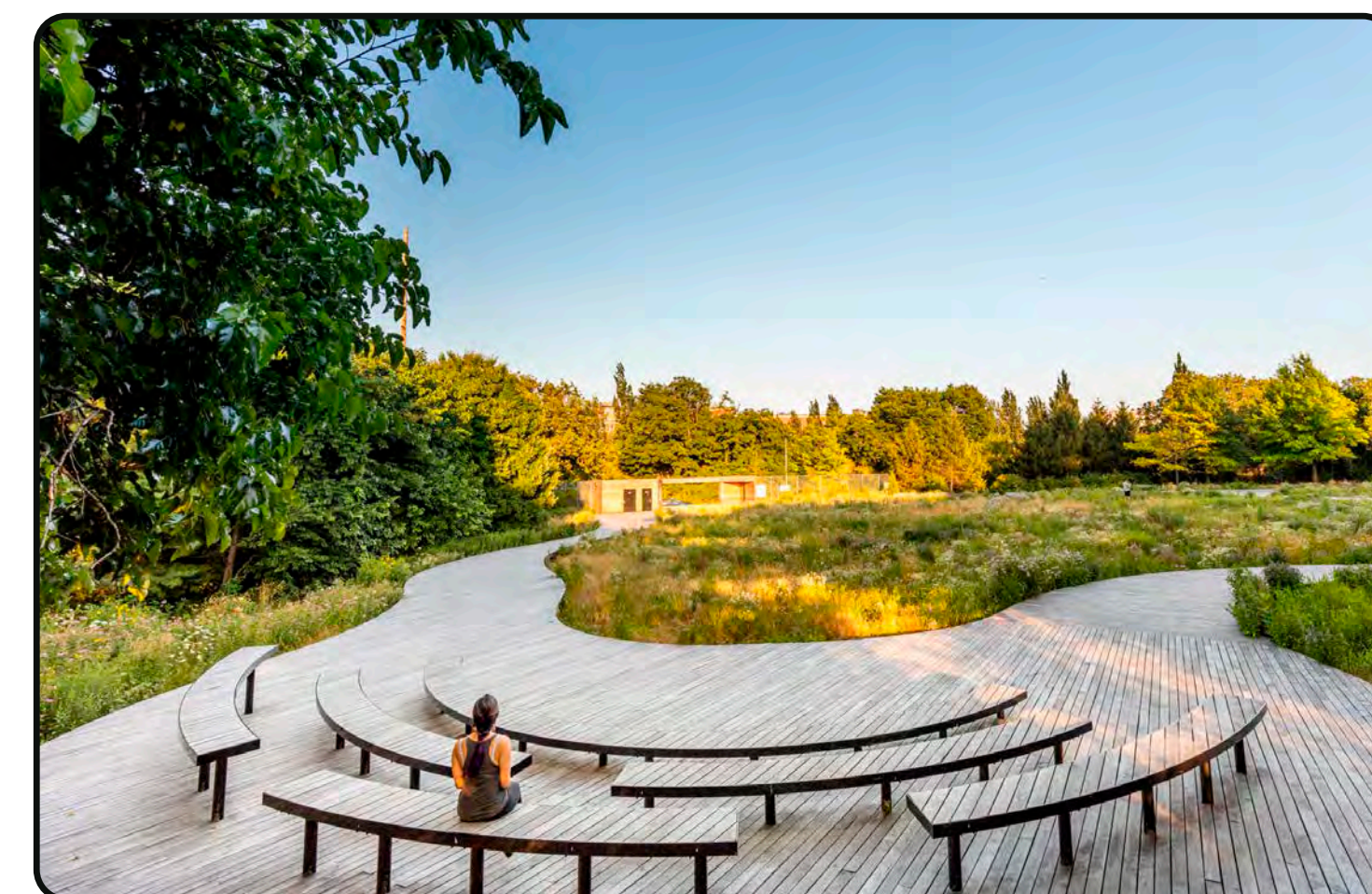
ARCHITECTURE



WETLANDS
Provide Stormwater Management While Offering Unique Wetland Experiences



STREAM RESTORATION
Overwide Stream Restoration Enhanced With Native Planting



OUTDOOR EDUCATION
Flexible Seating Spaces Integrate Outdoor Classrooms Into Park Experience



WOODLAND PICNIC GROVE
Mature Existing Trees Provide a Shady Space to Sit and Relax on Park Picnic Tables

PROGRAM

