



Name: .....



Woolworths

# DISCOVERY GARDEN



Interactive storybook



# There's a new buzz in the garden!

Bees are friends of the environment. They help all kinds of plants **grow**, from wildflowers, macadamias and apples to your parent's coffee.

Bees help us in so many ways, so let's say **thank you** by planting seeds that will grow into flowers, herbs and vegies that **bees will love**.



When a busy buzzy bee visits your plants, keep your distance and always have an adult with you. Not all bees sting, but it's still best to watch from afar.





**The adventure begins**  
with one tiny pot,

But the **treasure** inside  
can turn into a lot!

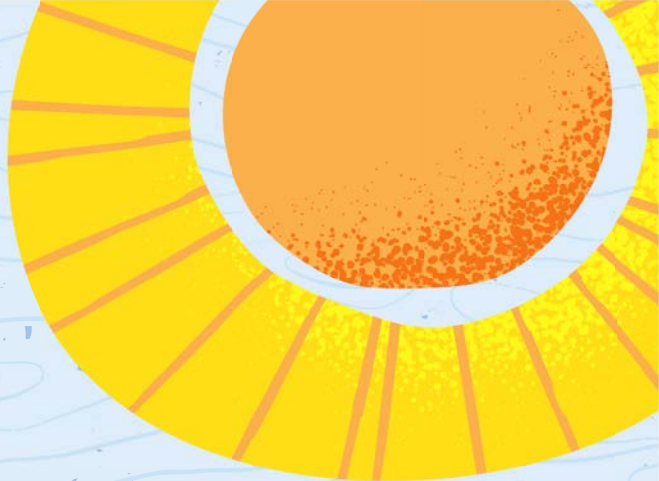




**With my seeds** in the soil,  
plus some water and sun,

Just a few minutes' work,  
and the **fun has begun.**





**Each morning** I check  
if my plant has been growing,

I hope bees are patient,  
as nothing's yet showing.



**Try this  
fun activity**

### **Did you know?**

There are more than 1,500 bee species in Australia.  
Draw a picture of any bees that visit your plants, and  
ask an adult to help you look up what species it is.





Complete  
the maze

The **magic** starts  
happening deep down below,

Some seeds can grow *fast*  
but others are  
**s l o w . . .**

### Growing roots

What's happening under the surface? Although you can't see it, your seed is sending roots down into the soil to search for water and nutrients. Find the quickest path from the ladybug at the top to reach the bottom of the pot.







## Outdoor adventure



**Time to  
discover**

Can you spot all of these things?  
Head outside with an adult and go  
for a walk. Cross off each item above  
when you spot it on your adventure.



Then one special morning,  
what an awesome **surprise**,

I can't quite **believe**  
what I see with my eyes.



While I have been dreaming  
all night in my bed,

A **tiny green shoot**  
has poked out its head.







**With water and sunlight,  
the shoot's on its way,**

**It won't be long now 'til  
the bees say **g'day.****



### **Did you know?**

There are up to 60,000 bees in one bee hive.  
There are three different types of honey bees in a colony – a queen bee, worker bees and drones.





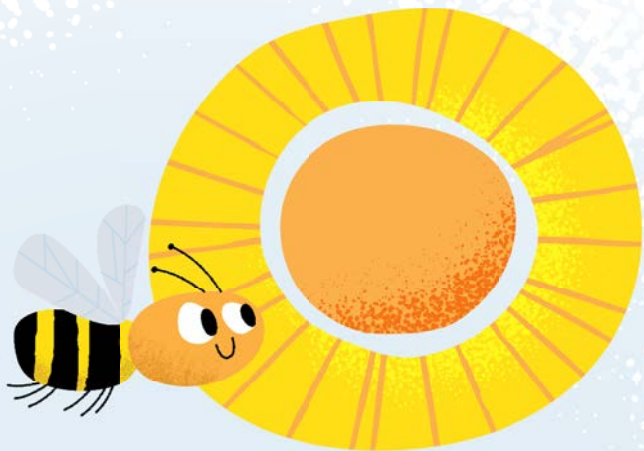
**The seedlings reach upwards  
and it's time to repot,**

**I choose their new home in a  
warm, sunny spot.**

**No garden? No problem!**

A bee-friendly garden can be as small as a single pot plant on the balcony or a window box, as long as it's a sunny spot that's sheltered from wind.





I'm so proud of my plants,  
as their **flowers open wide**,

**Bees just love**  
all the nectar and pollen inside.

**Try this  
fun activity**

### Let's get repotting

Once your baby plant is taller than the Woolworths Discovery Garden pot, it's time to move it to a bigger home with the help of an adult. It could be a bigger pot, an empty spot in the garden or even a brightly coloured gumboot. You will need:

- ☐ **Gardening gloves**
- ☐ **Potting mix**
- ☐ **A spade**

**Step 1:** Dig a hole in your garden or fill the perfect pot with soil. Leave enough space for your thriving seedling – keep it in its little compostable pot, which will eventually break down in the soil.

**Step 2:** Place your seedling into the hole and tuck it in tightly with potting mix.

**Step 3:** Give it a good drink of water – repotting is thirsty work!

For more tips and ideas, visit [woolworths.com.au/repotting](http://woolworths.com.au/repotting) with a responsible adult.





My vegies and herbs  
are the tastiest treat,

What a cool thing to do,

**growing**

**food**

**we**

**can**

**eat!**



Try this  
fun activity

## Give the bees a drink with the help of an adult

Bees get thirsty, just like us, so make sure they have access to water in your garden.

**Step 1:** Place a shallow bowl or container near your seedlings.

**Step 2:** Add a handful of shells, pebbles or both. Bees can easily drown in water, so these will give them something to perch on safely while they drink.

**Step 3:** Add clean, fresh water, making sure not to cover the landing pad. We want to keep those bees safe!

**Step 4:** Top up each morning to ensure it doesn't dry out.



Thyme

Lavender



As I pack up my school bag  
and put on my shoes,

I can't wait to tell all  
my buddies the news.



Show your  
friends

## My garden report



### Share your discovery

It's time to share the fruits of your labour. Write down the highlights from your journey to share with your classmates, and don't forget to keep an eye out for buzzy visitors.

My favourite thing that I grew was: .....

What does it look like: *Tall?* *Colourful?* .....

What does it smell like? .....

Did the bees enjoy visiting this plant? .....

If not, which one did they prefer? .....

I think the bees liked this plant because: .....

**Extra:** On a spare piece of paper, draw your plant to go with your report.







My garden has transformed  
from seeds into plants,

It's a beautiful spot where the  
**bees love to dance.**

I'd never have guessed  
I could be a **green thumb,**

**Hooray for more garden  
adventures to come!**

**For fresh ideas on how to cook with  
what you've grown, buzz on over to**

**woolworths.com.au/discoverygarden  
or scan the QR code with a responsible adult**



**Woolworths**   
*The fresh food people*

Woolworths Discovery Garden kits are recommended for 5 years and over. Adult supervision is required. Not suitable for children under 3 years. Contains small parts. Avoid breathing in dust. Wash hands immediately after use. Woolworths Discovery Garden kit components (other than fruit, vegetables or herbs) should not be consumed. Seed performance subject to growing conditions.