



PROUDLY CELEBRATING

10 years

BROADENING HORIZONS

MENTORING PROGRAMME 2025



Empowering early-career researchers
interested in translational research

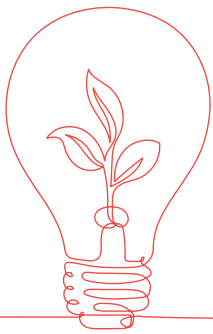


BROADENING
HORIZONS



CONTENTS

An introduction to Broadening Horizons	1
- At a glance	2
- Why cross-sector mentoring?	2
How the programme works	3
- Who are the mentors and mentees?	3
- What is involved?	4
The impact of mentoring	5
How to sign up	6
Participating organisations and institutions	7



AN INTRODUCTION TO BROADENING HORIZONS

Broadening Horizons is a cross-sector mentoring programme designed to support, develop and empower early-career researchers who are interested in translational research.

Jointly funded by



Returning for a fourth year, this successful programme is jointly funded by Cancer Research Horizons and Wellcome.



Since launch, Broadening Horizons is proud to have cultivated a community of over

500 INDIVIDUALS FROM **87** ORGANISATIONS.

We're delighted to be welcoming our **fourth cohort** in May 2025.

The aim of Broadening Horizons is to equip early career researchers working in health and life research with the skills, networks and mindset needed for the journey to translate discoveries. It does this by connecting mentees with mentors from industry, policy and the third sector. The programme gives mentees the tools knowledge and guidance to recognise translation opportunities. Alongside mentoring sessions, the programme also offers networking opportunities via multiple events throughout the year.

Now in its fourth year, Broadening Horizons has established a commendable track record and a solid evidence base, affirming its significant impact: inspiring the next generation of early career researchers to engage in translation, and supporting researchers to explore their personal and professional development.

“ At Cancer Research Horizons, we are committed to advancing the discovery and development of new therapeutics, transforming cutting-edge science into patient impact. Mentorship plays a crucial role in this process. Through our Broadening Horizons mentoring programme, we provide emerging innovators with the guidance and expertise needed to navigate the journey from discovery to translation. By investing in mentorship, we not only support professional development but also contribute to the progress of impactful interventions. ”

ALESSIA ERRICO, ASSOCIATE DIRECTOR SEARCH AND EVALUATION, CANCER RESEARCH HORIZONS





AT A GLANCE

- ▶ Nine-month structured cross-sector mentoring programme
- ▶ Individuals taking part can be from anywhere in the UK
- ▶ Expertly matched pairs, where mentors and mentees both benefit and learn
- ▶ Pairs meet at least five times throughout the programme
- ▶ World-leading speakers delivering thought provoking and educational content
- ▶ Mentoring training is delivered through the in-person event and online learning to ensure the opportunity to participate is maximised
- ▶ An unrivalled opportunity for individuals to network and build new relationships across the health and life science sector.

Please note that the programme will be delivered in English

WHY CROSS-SECTOR MENTORING?

What makes this approach so special is that it provides mentors and mentees with fresh perspectives and exposure to alternative ways of working. It also provides a safe space for participants to speak openly about the opportunities and challenges they face.

“ Discovery Research's mission is to generate new knowledge that could transform health in ways we can't always anticipate today. Our remit is broad, funding researchers across the sciences, arts and humanities, who all contribute to pushing back the boundaries relating to health life and wellbeing.

Even with our focus on discovery research, we know that researchers should be building connections and opportunities to open future pathways for translation of their work. The Broadening Horizons programme is designed to help build those skills and broaden viewpoints from an early stage, helping researchers place themselves and their work within the wider research and innovation system, and empowering them to walk new pathways in the future. ”



BEN MURTON,
HEAD OF EARLY CAREER AND CAREER
DEVELOPMENT RESEARCHERS
DISCOVERY RESEARCH, WELLCOME

HOW THE PROGRAMME WORKS

Broadening Horizons provides development and support to early career researchers through structured mentoring, events and training, all centred on cultivating the skills and confidence to navigate the requirements of translational research.

WHAT IS THE TIMELINE?

Programme Launch	Development Lab 01	Midway event	Development Lab 02	Close celebration
<i>Discovering translation</i>	<i>Purposeful communication</i>	<i>Overcoming barriers</i>	<i>The power of resilience</i>	<i>Becoming a decision maker</i>
In-person: 21st May 25	Virtual: July 25	Virtual: September 25	Virtual: November 25	In-person: February 26

WHO ARE THE MENTORS AND MENTEES?

MENTEES UK and RoI early career researchers which includes post-doctoral and junior group leaders within the first few years of independence and/or on their first permanent, open-ended or long-term rolling contract.

At the current time, this programme is not intended for PhD students.

MENTORS We welcome mentors with diverse backgrounds across health and life research from those at companies developing health-related innovations (e.g. therapeutics, vaccines, medical devices, digital health products) to those in public health, the arts, humanities, social sciences, and bioethics.

Mentors should have an interest in mentoring early-career researchers from academic institutions and have a PhD or equivalent experience to participate in the programme.



We're looking for mentees who are:

- ▶ Interested in translational research
- ▶ Keen to develop, and are prepared to take responsibility for professional development
- ▶ Ready to be mentored, with a willingness to seek feedback and receive advice

We're looking for mentors who:

- ▶ Can act as a positive role model
- ▶ Understand collaborations between and contributions from different sectors, to drive forward the translation of research from the bench to bedside
- ▶ Are committed, reliable and able to keep discussions confidential
- ▶ Have great listening skills and are easy to talk to
- ▶ Want to make a positive difference and help someone work through a challenge

“ Having that level of support outside my home institution is really important and was a really big driver for me coming to this programme - to broaden my network.”

MENTEE



WHAT IS INVOLVED?

Creating cross-sector matches

The programme is run by Moving Ahead, world-leading experts in the design, development and delivery of structured mentoring programmes. We believe in the power of human connection to make the world a better and more inclusive place for everyone. Creating meaningful mentoring relationships is at the heart of our approach.

We will match participants based on our tried and tested criteria, which includes considering experience, skills, core values and fit.

Mentors and mentees commit to meeting (virtually or in person) at least five times throughout the programme, with training specific to their roles as a mentor or mentee provided. Participants access a vibrant curriculum of learning opportunities equating to over 26 hours of CPD. All content is stored on a virtual learning hub, for participants to access with ease for the duration of the programme.

THE IMPACT OF MENTORING

Mentees from the 2021-2022 Broadening Horizons cohort reported that the programme had helped them to understand, interact and collaborate with industry, policy and third sector party organisations. Whilst supporting the development of mentees, several mentors also recognised benefits for their own development. (As validated externally by Aleron*.)

“ My mentor played an important role in supporting and achieving my goals. ”

MENTEE



The 2024 programme demonstrated significant benefits in the following areas:



Provides a clear career pathway, setting achievable goals for success



Facilitates networking and relationship-building opportunities



Fosters meaningful interdisciplinary connections



Helps mentees define their professional trajectory and academic goals



Enhances leadership skills



Offers insights into translational research processes



Equips participants with practical tools to translate research

Lucy Huitong Li, former postdoctoral researcher at University of Manchester speaks about the impact of her mentor on her own research journey and how her research might translate into the real world.

You can watch [Lucy's interview here](#).



*Independent evaluator of initiatives designed to drive positive change through social impact and sustainability.



“The Broadening Horizons Programme is the best I have experienced as a mentor. Its ability to match mentor to mentee is extraordinary and precise. It's almost intuitive to the point of perfect mentor-mentee matches. Be Proud! Long may it continue.”

MENTOR

HOW TO SIGN UP

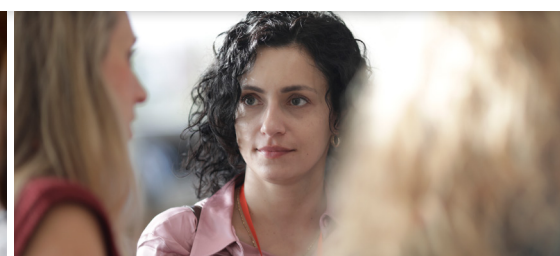
The Broadening Horizons programme welcomes both organisations and individual participants.

- ▶ **Mentors** with significant experience in translating research and that hold a PhD or equivalent expertise please

[APPLY HERE](#)

- ▶ **Early-career researchers** - express their interest directly by clicking below

[APPLY HERE](#)



Participating organisations and institutions

Abzena	Foretell Innovation Lab	MRC Laboratory of Medical Sciences	UCB Pharma
Accession Therapeutics	GE Healthcare Partners	MSD	University College London
Allergan	Genomics England	MSI Reproductive Choices	University of Birmingham
Aston University	GlaxoSmithKline	Nanna Therapeutics	University of Bradford
AstraZeneca	ICR	Neem Biotech	University of Bristol
Autolus Therapeutics	Illumina	Norgine	University of Cambridge
Barinthus Bio Plc	Immersive Rehab	Nourish Global	University of Dundee
Bio-Techne	Immunocore	Novartis	University of Edinburgh
Bournemouth University	Imperial College London	Oxford Science Enterprises	University of Glasgow
Cambridge Stem Cell Institute	InnoSpective Limited	Parkwalk Advisors	University of Leeds
Cardiff University	Institute of Cancer Research	Pfizer	University of Leicester
Cell and Gene Therapy Catapult	Institute of Genetics and Cancer	Quality Brewer	University of Liverpool
Charles River Laboratories	IP Group	Queen Mary University	University of Manchester
Circles Health & Wellbeing	King's College London	Renegade Brewery	University of Nottingham
Cobra Logistics	LabCorp	RFM Associates	University of Oxford
Coventry University	Lancaster University	Roche	University of Southampton
CRUK Cambridge Institute	Leicester University	Sheffield University	University of Sussex
Curve Therapeutics	Lightpoint Medical	Telix	Warwick University
Dyson	London School of Economics	The Francis Crick Institute	Wellcome Sanger Institute
Enhanc3d Genomics	Lonza	Thermo Fisher Scientific	Wellcome Trust

For more information or to sign up for the programme, contact the Broadening Horizons team:
broadeninghorizons@moving-ahead.org

MORE FROM MOVING AHEAD

At Moving Ahead we are always developing exciting new approaches to improving workplace diversity, equity and inclusion. To learn more about our experience and what we have to offer, please take a look [here](#)

If you'd like to explore our offerings further, or discuss a specific challenge you'd like help to overcome, please just get in touch: contactus@moving-ahead.org