

# San Mateo County Parks Department Midcoast Park Improvements 2013-2017

Midcoast Community Council  
April 26, 2017



# Midcoast Park Initiatives

- Midcoast Recreational Needs Assessment (2002)
- Mirada Surf East and West acquired (2002)
- Fitzgerald Marine Reserve Resource Assessment (2002)
- Midcoast Park Mitigation Fee (2003)
- Fitzgerald Marine Reserve Master Plan (2004)
- Midcoast Park Action Plan (2007)
- Quarry Park acquired (2008)
- Midcoast Park District created in County Parks (2008)

## Other Past County Park Initiatives

- Fitzgerald Marine Reserve Marine Protected Area created (2010)
- Highway 1 Safety and Mobility Improvement Project Phase 1 (2010)
- CA Coastal Trail Conceptual Plan from Half Moon Bay to Princeton (2010)
- CA Coastal Trail wayfinding signs from Ritz Carlton to Princeton (2011)
- Surfers Beach improvements – Secured Cosco Busan grant funds, convened meeting of agencies, CalTrans applied for TA funding (2013)
- Fitzgerald Marine Reserve Parking lot improvements (2014)
- Fitzgerald Marine Reserve Cypress Forest improvement project (2014)
- Fitzgerald Marine Reserve San Vicente Creek restoration (2014)

# Surfers Beach Coastal Trail Improvements

- County Parks initiated discussion with CalTrans and Coastal Commission in 2010
- 400' of Coastal Trail and vertical access to beach was improved 10/15
- 400' of riprap Protection for Highway 1
- County Parks is assisting CalTrans with maintenance of Coastal Trail



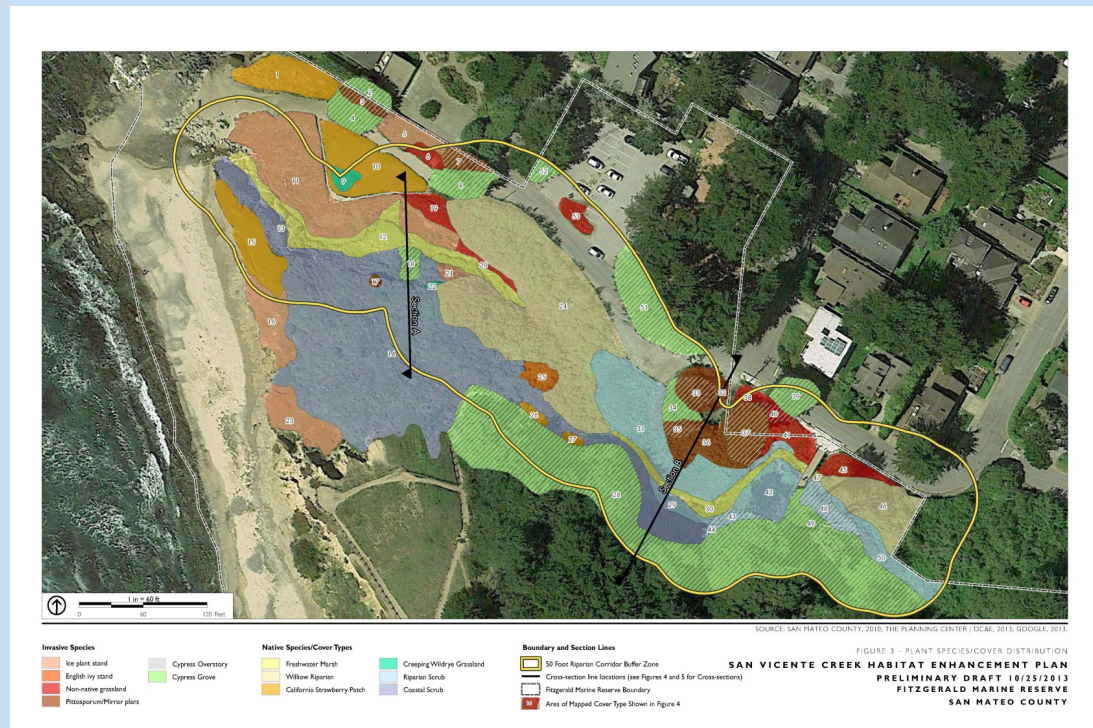
# Fitzgerald Marine Reserve Parking Lot Improvements

- Added ADA parking spaces and access to restroom
- Repaved and restriped parking lot
- Storm water improvements to prevent pollution from parking lot discharging directly into San Vicente Creek



# San Vicente Creek Restoration

- Phase 1 completed summer 2015.
- Phase 2 is being planned.



# Midcoast Park Initiatives

- 2008-2014 Expenditures of Midcoast Park & Recreation Funds
  - Mirada Surf Coastal Trail (2009)
  - Pillar Point Bluff Coastal Trail improved and acquired by County (2009)
  - El Granada Elementary School ballfield improvement project (2010)
  - Quarry Park playground improvements (2011)
  - Fitzgerald Marine Reserve CA Coastal Trail (2013)
  - Mirada Surf Coastal Trail Phase III improvements including bathroom and picnic area (2013)
  - Moss Beach playground and restroom improvements (2013)
  - Clipper Ridge Playground upgrade (2014)
  - Quarry Park swing sets (2014)

# Moss Beach Park

- County Park acquired property 12/13
- Bathroom and drinking fountain
- Basketball court and playground improvements
- Picnic tables
- Fence replacement





# Mirada Surf Phase III

- Improved transition with Coronado intersection



- Double restroom with drinking fountain
- Picnic tables



# Clipper Ridge Playground Improvements

- Basketball court
- Swing set
- New playground
- Water fountain
- Picnic area



# Quarry Park Swing Improvement Project

**Ages 6-12**



**Tot playground**



# Other County Park Projects in the Midcoast

2013 to Present

# Devil's Slide Coastal Trail

- Trail constructed and opened Spring (2014)
- 400,000 visitors first year
- Devils Slides Ambassadors Program set up
- Ollie Mayer Overlook Dedication (2015)
- Has won 5 State and regional awards



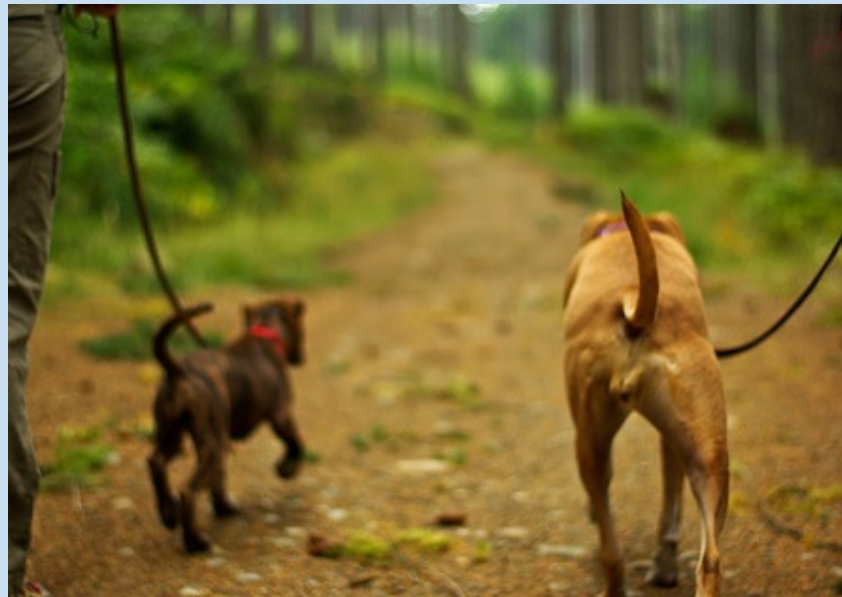
# Visitor Use/Non-Use Study

- Most comprehensive survey of County Park use ever
- 6 weeks in Spring 2016, 7 days a week, 3X a day
- 99% rated park experience good or very good
- Identified who visits County parks and what they are looking for
- Also informs us of obstacles to park use



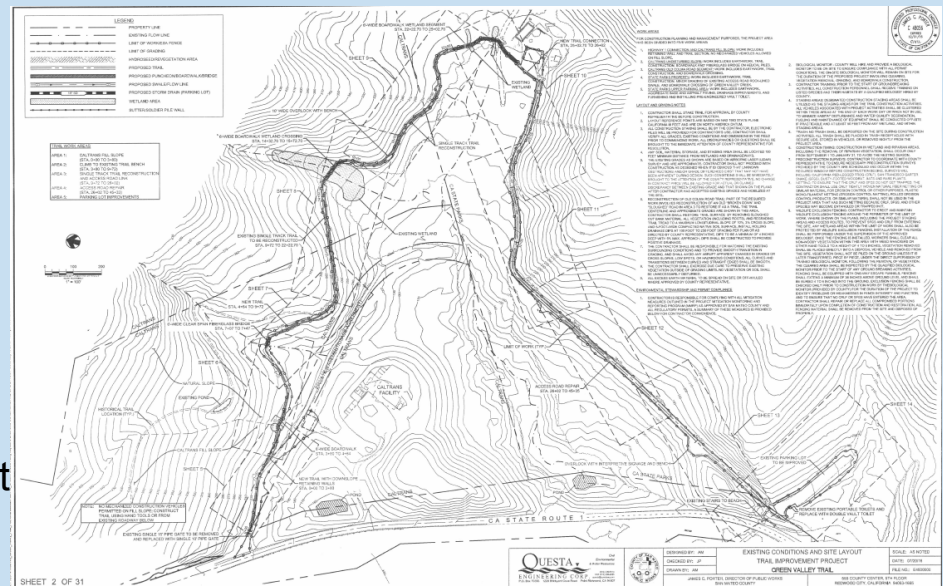
# Dog Management Committee

- 10 member Committee set up Fall 2016
- Chris Johnson, MCC representative
- Update and clarify dog management policies in County Parks – Winter 2017
- Potential pilot project



# Green Valley Trail Section of Coastal Trail

- County Park project on CalTrans and State Parks lands
- Coastal Conservancy funding design, CEQA and permits
- 90% plans and specs completed
- Regulatory issues
- Coordination with County Planning on crossing Highway 1 and lower parking lot
- Construction estimated Summer 2019

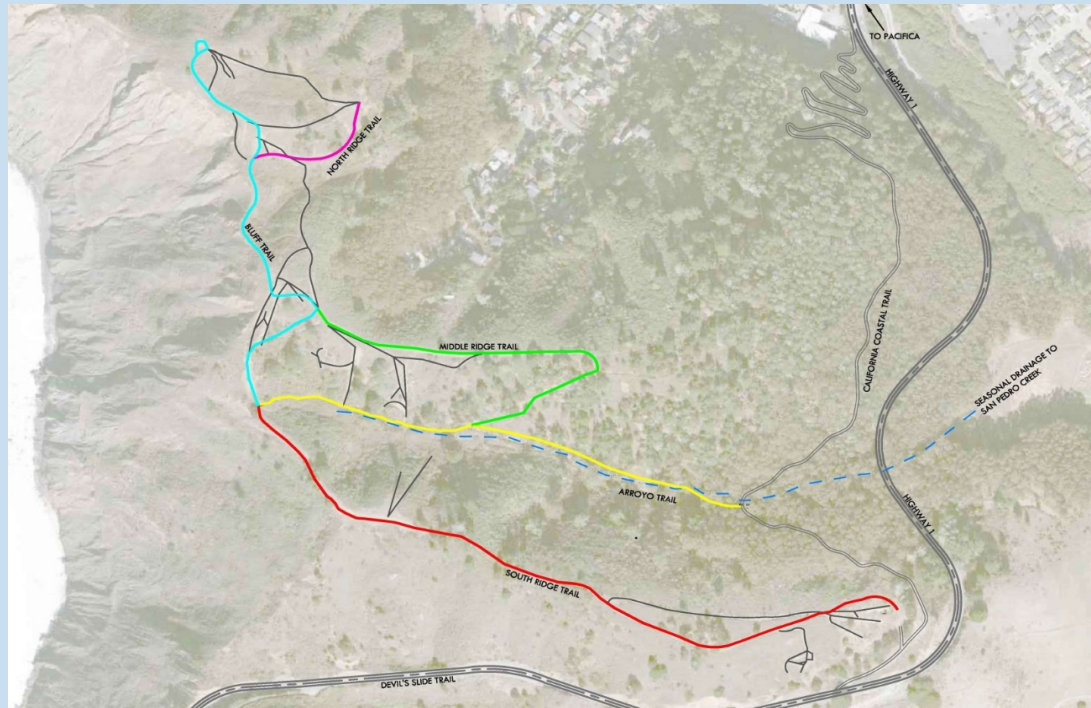




# Pedro Point Headlands

- Working with Coastal Conservancy, City of Pacifica, and Pacifica Land Trust.
- Prepared MND for County and City CDPs.
- Pacifica Land Trust improving trails and restoring lands.
- County will acquire property when existing trails and improved and degraded lands restored (estimated FY 2018-19).
- Coastal Conservancy will fund Coastal Trail design, CEQA, permits, and construction.

# Pedro Point Headlands Project Site



- Five Named Trails
  - South Ridge Trail
  - Bluff Trail
  - North Ridge Trail
  - Middle Ridge Trail
  - Arroyo Trail

# Parallel Trail

- Connects Half Moon Bay at Mirada Road to Coronado
- Crosses Mirada Surf East
- Managed by County Planning with participation of Parks, Public Works, and Supervisor Horsley's staff
- CEQA and NEPA review



# Fitzgerald Marine Reserve

- Visitors Center improvements
- Kiosk video
- Use of technology and exhibits

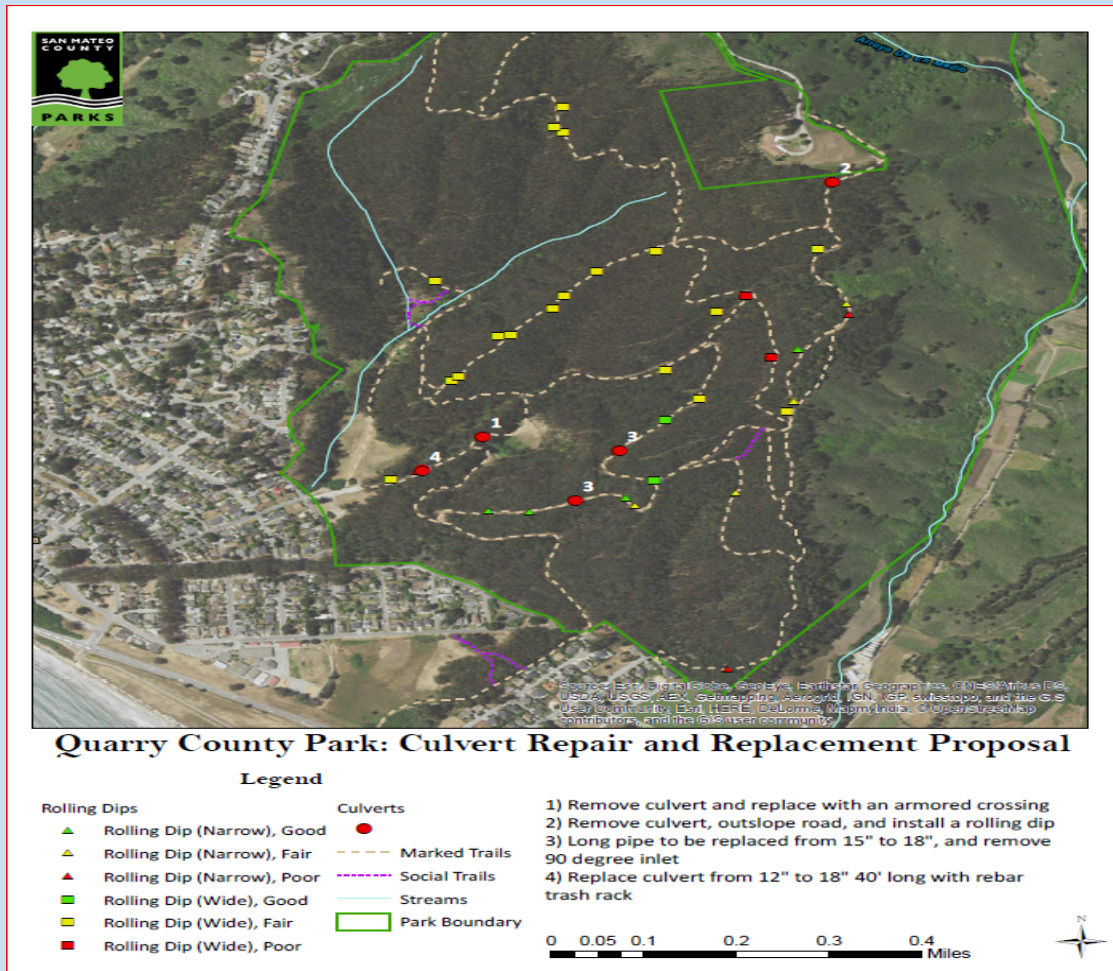


# Fitzgerald Marine Reserve

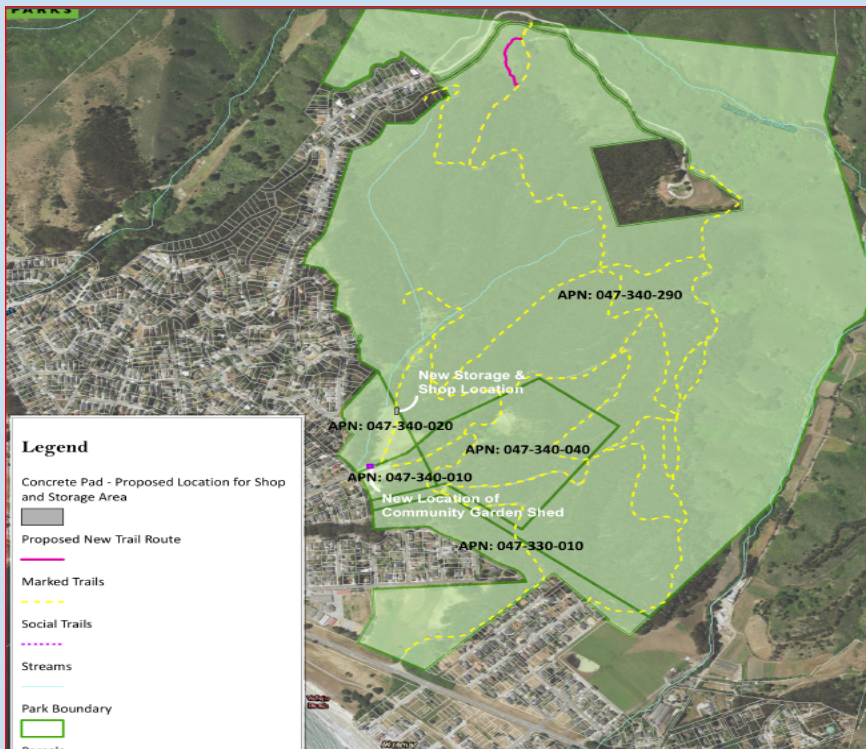


# Approved Quarry Park Drainage Improvements

- Culvert repair and removal
- Installation of rolling dips and other drainage improvements



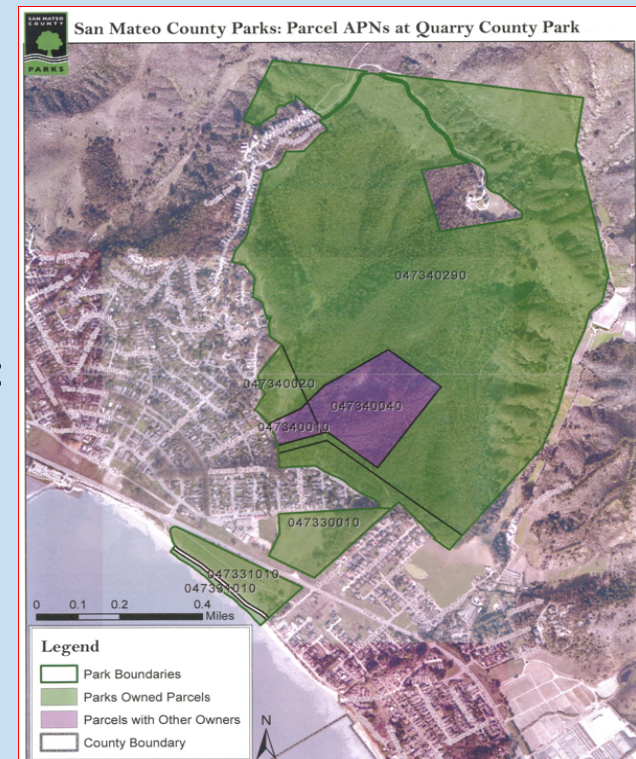
# Proposed Quarry Park Improvements



- Shed relocation to community garden
- New County Park shop, storage area, and planting
- Vista Trail
- Planning Commission May 10, 2017

# Quarry Park Master Plan

- Evaluate:
  - Sediment assessment of roads and trails
  - Opportunities for improvements
  - Fire hazard reduction
  - Sensitive habitats and species
  - Earthen dam
- Through public outreach evaluate opportunities for:
  - Additional desired recreation improvements
  - Loop trails and trail connections
  - Improved traffic circulation for emergency access
  - Increased parking over time
  - Alignment with Dog Management Committee
  - Partnership opportunities





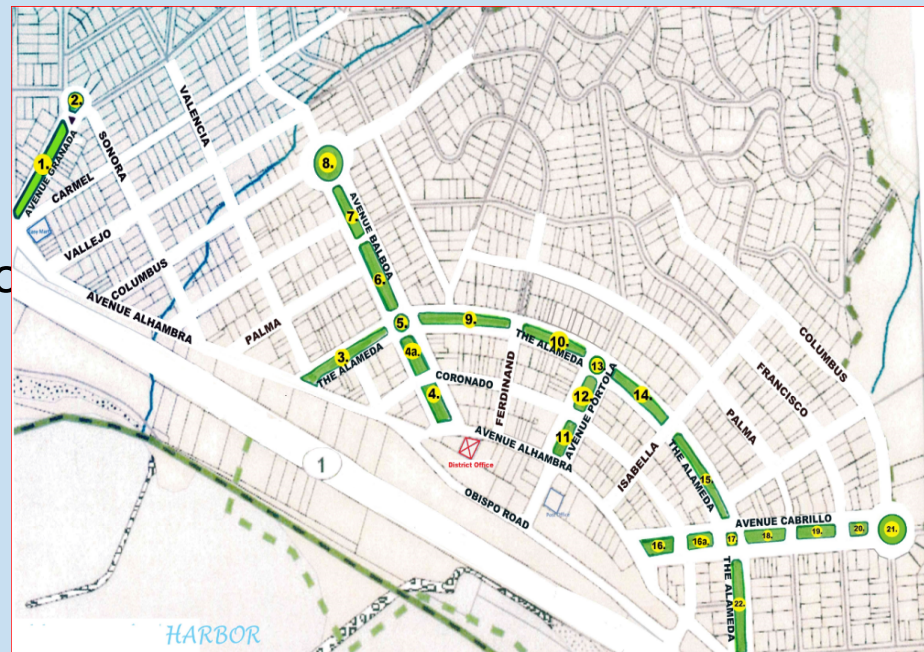
# Quarry Park Master Plan Workshops

Community workshops will take place on the following dates in the El Granada Elementary School Multi-Purpose Room:

- Tuesday, May 16 at 7pm
- Tuesday, July 25 at 7pm
- Tuesday, October 3 at 7pm

# Granada Community Services District (GCSD) Median Improvement Project

- County Parks staff supporting GCSD staff and Park Advisory Committee
- Conceptual Median Trail Plan to be developed
- Medians 8 and 11 to be improved as pilot projects first



# Ohlone/Portola Heritage Trail

- Trail Committee is moving towards developing a Feasibility Study
  - Follow Ohlone village and trade routes (10,000 year history)
  - Could assist in completion of Coastal Trail through 50 miles of San Mateo County coast
  - Trail linkages from Discovery Site to Palo Alto as well
  - Wayfinding opportunities for recreational trail, historic route, and auto route
  - Many interpretive opportunities
  - Potential for hut to hut development.
  - Trail Committee overseen by Supervisors Horsley and Groom with participation from park and open space agencies, historical associations, Ohlone community, Fed and State Legislators, MCC and Cities of Half Moon Bay and Pacifica

# Sanchez Adobe Master Plan Implementation

- Ground penetrating radar to detect archaeological remains prior to construction
- An Addendum to Master Plan Mitigated Negative Declaration - public review Summer 2017
- Interpretive building and utilities, replace existing bathroom, extend parking lot, and provide ADA paths of travel
- Construction anticipated Spring/Summer 2018



# Trails at Pillar Point Bluffs



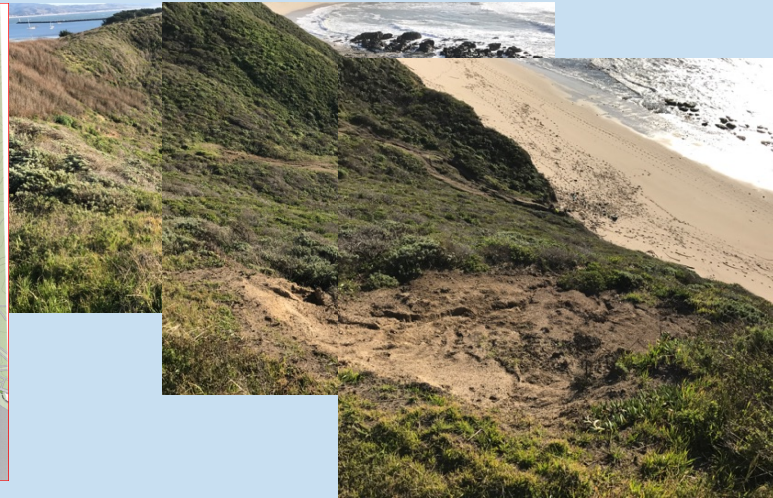
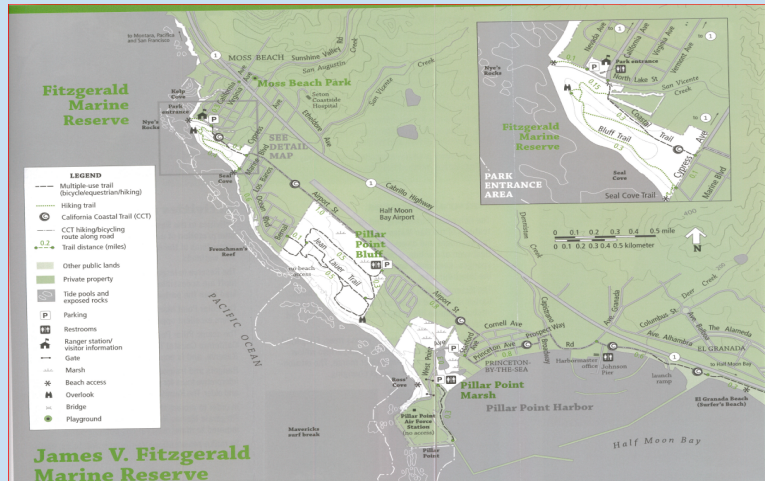
- Signs and fencing Winter 2016
- Geotechnical Study of Bluff Erosion completed Spring 2016
- Feedback from Midcoast Community Council re: trails and fencing Summer 2016
- Bluff Trail erosion still being assessed
- Coastal Trail and Bluff Trail reroute to be proposed and CDP to be secured so improvements can be made



# Fitzgerald Marine Reserve

## Ross' Cove Access Improvements

- Evaluate stairway opportunities from bluff to beach



# Until the Next Progress Update

- Thank you for this opportunity to update you on San Mateo County Parks efforts
- Questions