

San Mateo County Parks Update Midcoast Community Council

April 22, 2015





Past

- 2002 Midcoast Recreational Needs Assessment
- 2002 Mirada Surf East and West acquired
- 2002 Fitzgerald Marine Reserve Resource Assessment
- 2003 Midcoast Park Mitigation Fee
- 2004 Fitzgerald Final Master Plan
- 2007 Midcoast Park and Recreation Action Plan
- 2008 Acquired Quarry Park from Midcoast Parklands
- 2008 Created Midcoast Park District

Past

- 2009 Mirada Surf West Coastal Trail improvements
- 2010 Granada Elementary School Playfield improvements
- 2010-11 CA Coastal Trail signs installed from Ritz Carlton in Half Moon Bay through to Princeton
- 2010 Highway 1 Safety and Mobility Improvement Project Phase I approved
- 2010 CA Coastal Trail Conceptual Plan approved by BOS from Half Moon Bay to Princeton
- 2011 Pillar Point Bluff transferred from POST to Parks
- 2012 Highway 1 Safety and Mobility Improvement Project Phase II approved.

Recent

- 2014 Acquired Wicklow – 478 acres
- 2014 Completed Devils Slide Trail
- 2014 Moss Beach Park acquisition
- 2014 FMR parking Lot and video monitor
- 2014 Grading for CA Coastal Trail, Wavecrest section
- 2014 Mirada Surf restroom
- 2015 Ollie Mayer Overlook dedication
- 2015 San Vincente Creek Restoration
- 2015 Cypress Grove trimming



The James V. Fitzgerald Marine Reserve Parking Lot Improvement Project

A 5.5 mile band of shoreline, including James V. Fitzgerald Marine Reserve, is designated as an Area of Special Biological Significance (ASBS). To preserve the diverse aquatic life and unique species that live in the ASBS, the State Water Resources Control Board regulates and protects water quality in this area. Areas of Special Biological Significance are basic building blocks for a sustainable, resilient, coastal environment and economy. The discharge of trash and other pollutants that alter natural water quality is prohibited.



This parking lot has been designed to filter stormwater runoff. The landscaped area before you is an engineered stormwater treatment system that collects runoff from the parking lot, which may contain pollutants, such as dust from brake pads, oil and other vehicle fluids. The runoff is directed to the bioretention basin where it is filtered by native plants and specially designed soils before entering an underground drainpipe that leads to San Vicente Creek and the Pacific Ocean.



Funding for this project has been provided in part through an agreement with the State Water Resources Control Board.





Present

- Moss Beach Park renovation
- Clipper Ridge playground improvements
- Green Valley Trail design public meeting: May 11
- Quarry/Wicklows Park fuel reduction (Measure A)
- Surfers Beach access and Coastal Trail
- Multi-modal Trail design
- Parking and Access study, coordination with NPS
- Pillar Point Bluff property (Thompson)
- Assisting GCSD under agreement
- Mini-parks policy

Mini – Parks!









Devil's Slide Trail: Ollie Mayer Overlook

FINAL PROOF
APPROVED: _____
DATE: _____



Her Passion Inspired Action

Ollie Mayer's Lasting Legacy

For decades, Ollie Mayer was one of the primary voices opposing the 1960s plan to reroute Highway One behind Devil's Slide and over Montara Mountain. Ollie helped spearhead public support for a tunnel solution. Her passion for the cause and her ability to inspire others to action made her a leader in the movement. San Mateo County voters overwhelmingly agreed and rejected the Montara Mountain freeway plan in favor of a tunnel. Her work to preserve the environment and quality of life on the San Mateo Coast will benefit us all for generations to come.



Principled, Fearless – A Force of Nature

Olive (Ollie) Graham Hendricks Mayer
11/7/1918 ~ 03/20/2013

Ollie Mayer was one of the San Francisco Peninsula's most successful and effective environmentalists. She championed efforts to preserve the San Mateo Coast. An active leader in the Loma Prieta Chapter of the Sierra Club, she applied her intellect and energy to preserving redwood groves and creating many of the hiking trails we enjoy today.

Born
November 7, 1918
Olive (Ollie) Graham Hendricks
is born in Maplewood, New Jersey.



With a Master's Degree
from the University of Michigan, Ollie gets her license as a mechanical engineer and goes to work at Sperry Gyroscope.



1941 - While on a solo hike in the Reddy Mountains, Ollie meets medical student Henry Hank Mayer. With WWII looming, she marries him on December 31, 1941.

After the war, Ollie and Hank move to northern California. Hank sets up his medical practice in Redwood City, and Ollie starts a machine shop in San Carlos.



The Mayers settle in Woodside, where both are born in 1948, and Judy comes along in 1950.

1950s & 60s - During the McCarthy era, Ollie and Hank actively support blacklisted friends and the Civil Rights Movement. Ollie takes an early stand against the Vietnam War. She starts her own company, SEPCO, creating hands-on science kits for school children.



After selling SEPCO in 1962, Ollie devotes her talents and energy to protecting the environment and the rest of history.

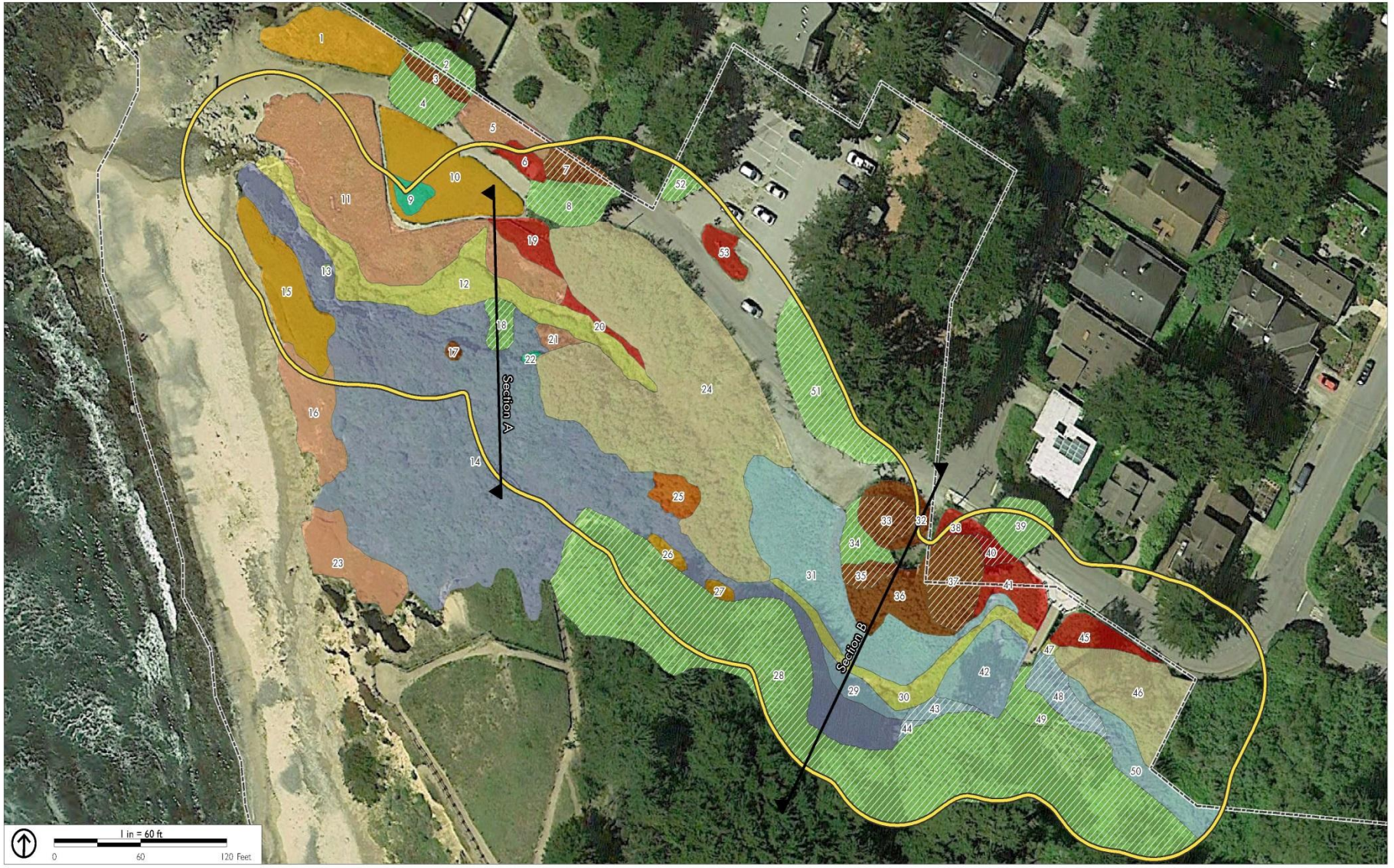
Ollie's work was recognized with many awards: San Mateo County Women's Hall of Fame, Duveneck Award from Loma Prieta Chapter of the Sierra Club, Sierra Club's National Achievement award. Above she is honored by Peninsula Open Space Trust.




Devil's Slide Trail A San Mateo County Park







SOURCE: SAN MATEO COUNTY, 2010; THE PLANNING CENTER | DC&E, 2013; GOOGLE, 2013.

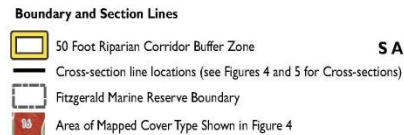
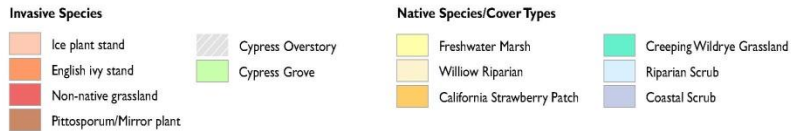


FIGURE 3 - PLANT SPECIES/COVER DISTRIBUTION
SAN VICENTE CREEK HABITAT ENHANCEMENT PLAN
PRELIMINARY DRAFT 10/25/2013
FITZGERALD MARINE RESERVE
SAN MATEO COUNTY













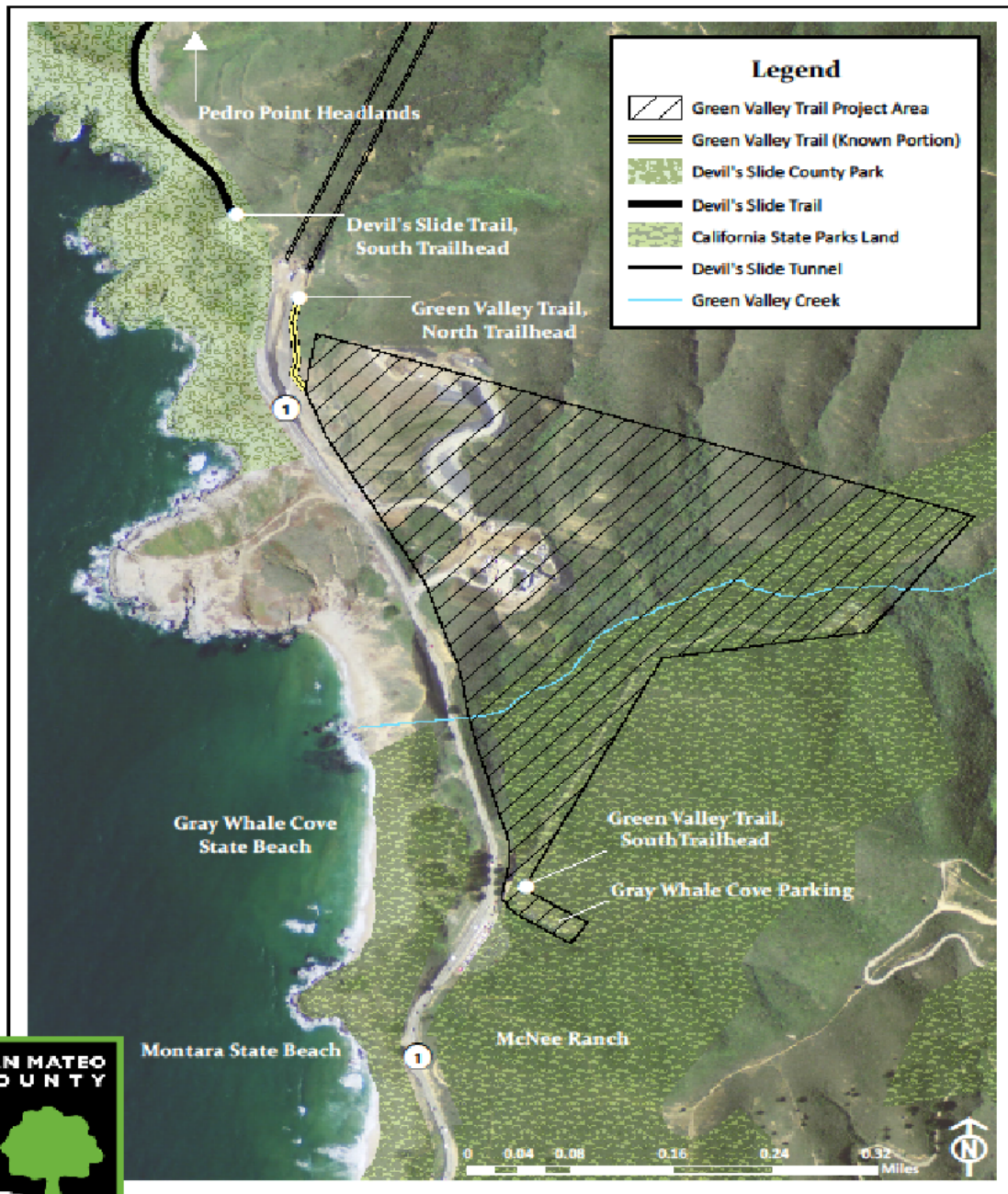


Welcome
★ Junior
Naturalists
2014

100% MOUNTAIN
SPRING WATER
ARROWHEAD
2.0L (67.6 FL OZ)







Green Valley Trail Location Map

MidCoast Trust Fund

Current balance (FY14-15) as of 4/16/15

\$ 324,244.14

FY14-15 Planned expense **\$100,000** (Clipper Ridge Playground structures)

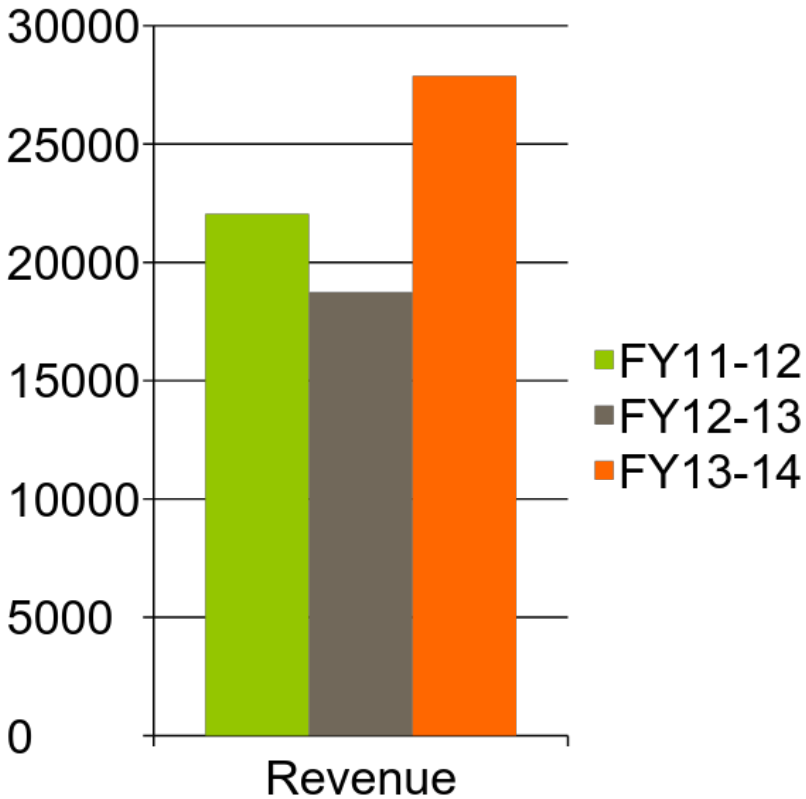
Mid-Coast Trust Fund

FY13-14 Projects (Expenditures)

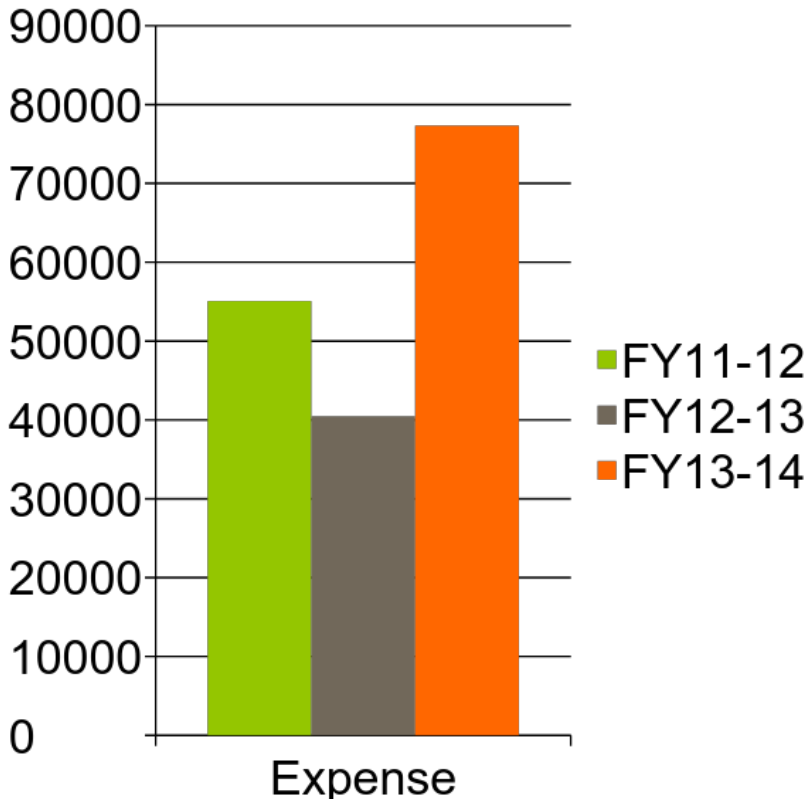
- \$4,359.42 Fee refund
- \$4,400 Tree Removal
- \$600 Potholing for Sewer Main
- \$67,960 Moss Beach Restroom

MidCoast Trust Fund

3 Year Average - \$22,890.19



3 Year Average - \$57,629.17





Future – on the Horizon

- Student Conservation Association Youth Corps = working across boundaries (Measure A)
- Pedro Point (Measure A)
- Portola Trail – 250 year anniversary in 2019
- Sanchez Adobe renovation
- Green Valley Trail (Measure A)
- Master Plan for Quarry/Wicklow/Mirada Surf (Measure A)
- Managing visitor capacity at Fitzgerald Marine Reserve
- Complete the CA Coastal Trail (Measure A)
- East/West connecting trail(s) through SFPUC
- Montara Linear Park and Trail Plan

Questions?



Marlene Finley
Parks Director
San Mateo County Parks
mfinley@smcgov.org
650-599-1394