



Experts Connecting Communities

APPENDIX D - PROPOSED ROUNDAABOUT PAVING FOOTPRINT

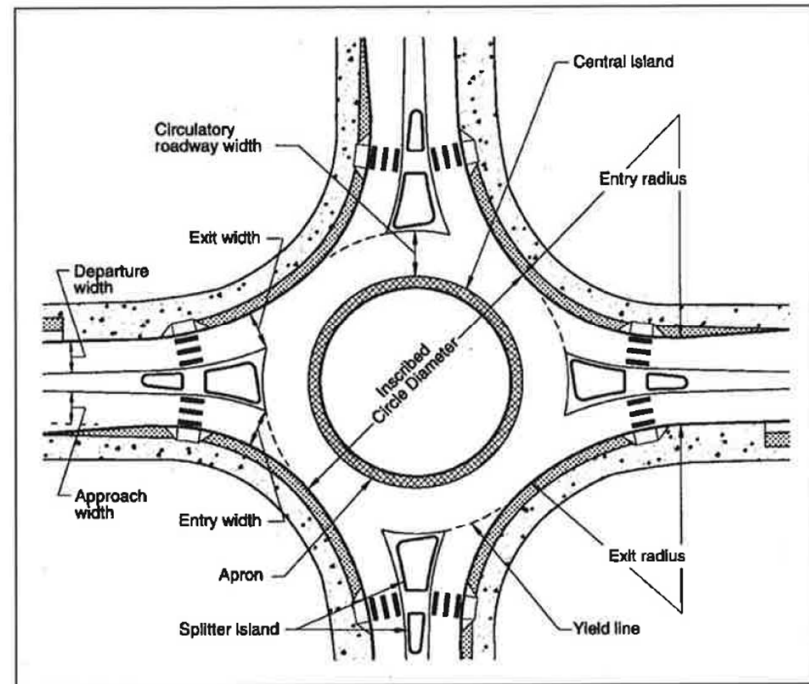
CTMP Roundabouts

Inscribed Circle Diameter (m) <i>ct</i>	Approximate R_1 Value		Maximum R_1 Value	
	Radius (ft)	Speed (mph)	Radius (ft)	Speed (mph)
Single-Lane Roundabout				
100	35	13	165	25
115	45	14	185	26
130	55	15	205	27
150	65	15	225	28
Double-Lane Roundabout				
150	50	15	205	27
165	60	16	225	28
180	65	16	225	28
200	75	17	250	29
215	85	18	275	30
230	90	18	275	30

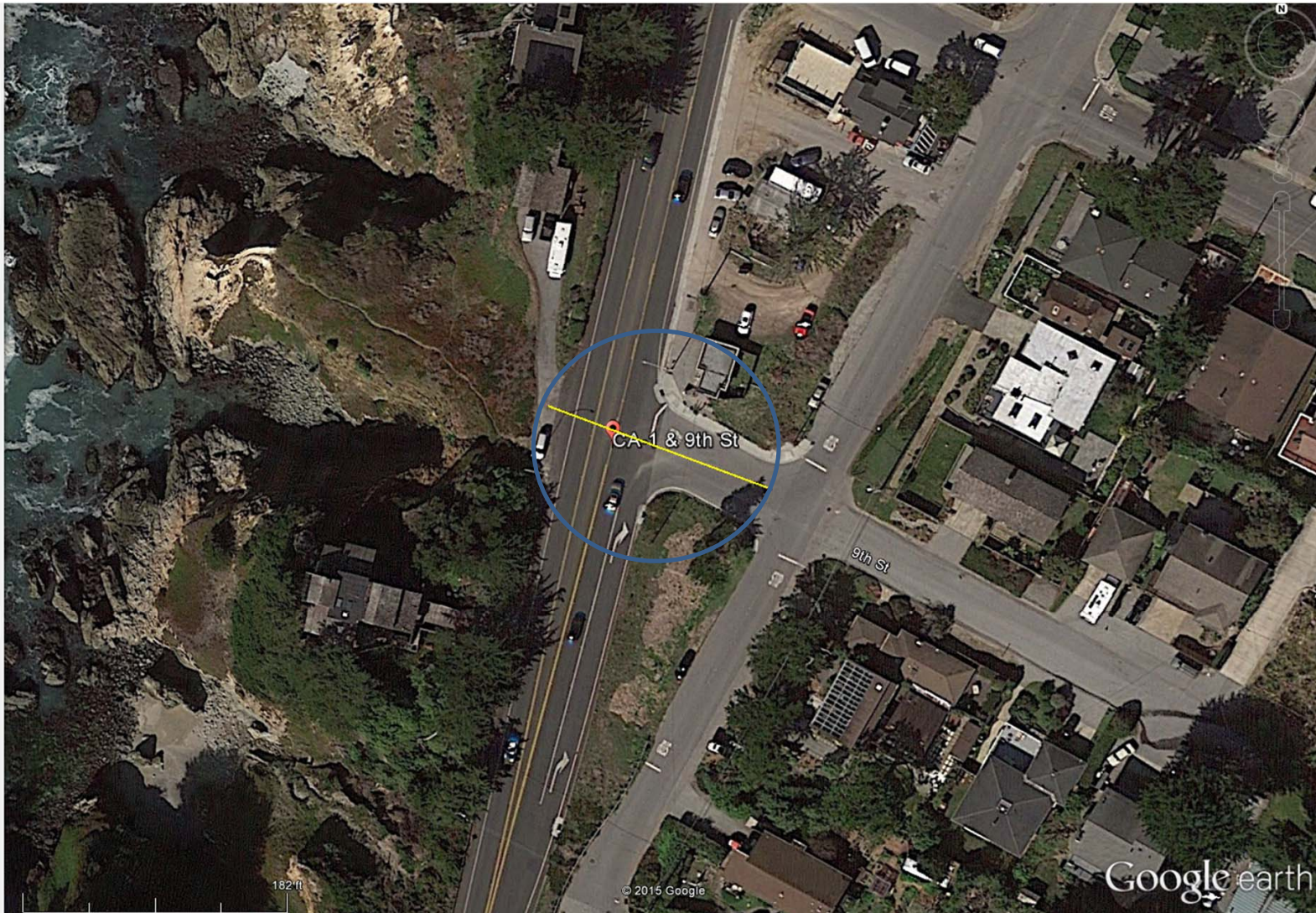
Exhibit 6-14. Approximated R_1 values and corresponding R_1 values (U.S. customary units).

R_1 = Entry Radius

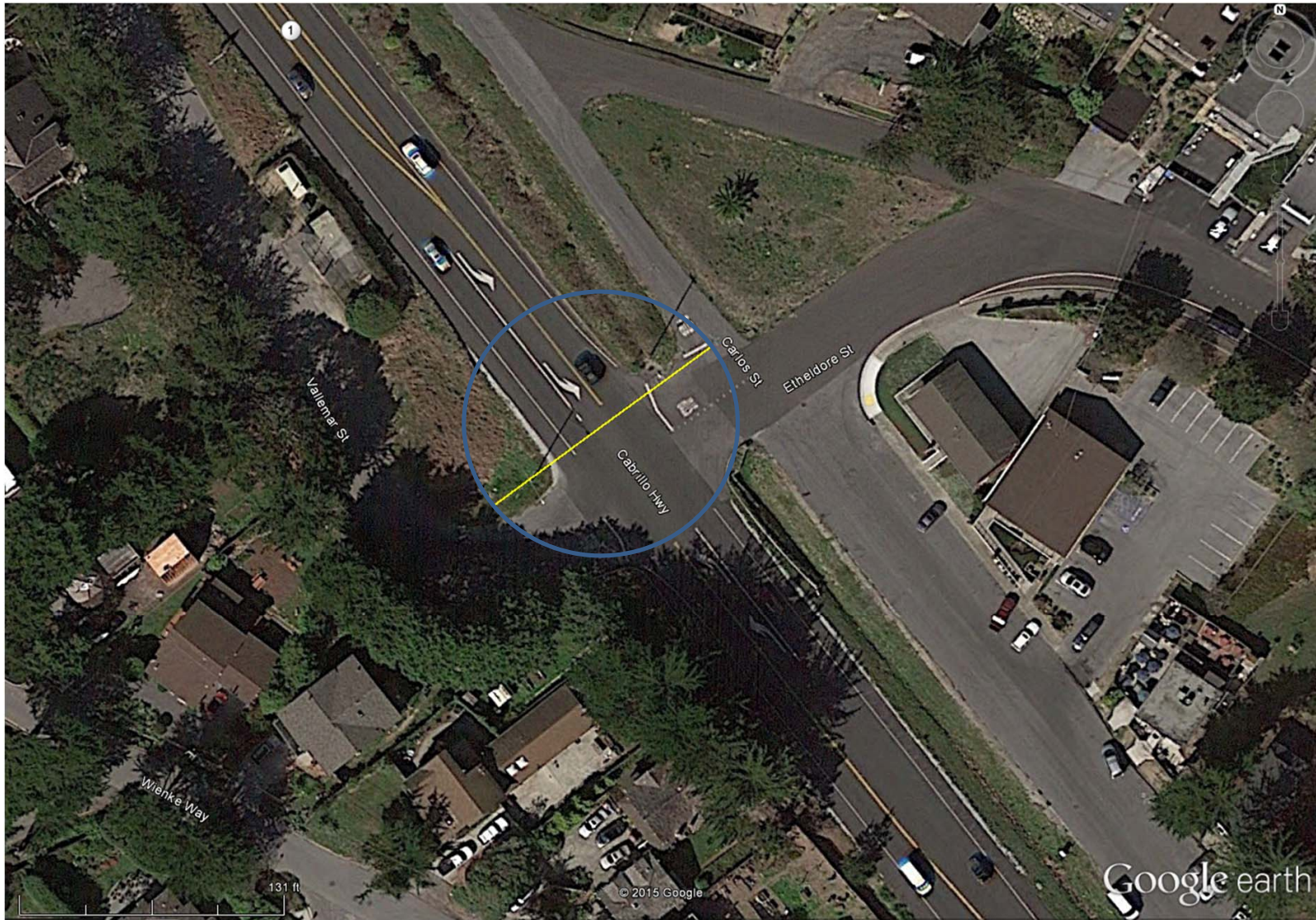
R_4 = Left Turn Radius,



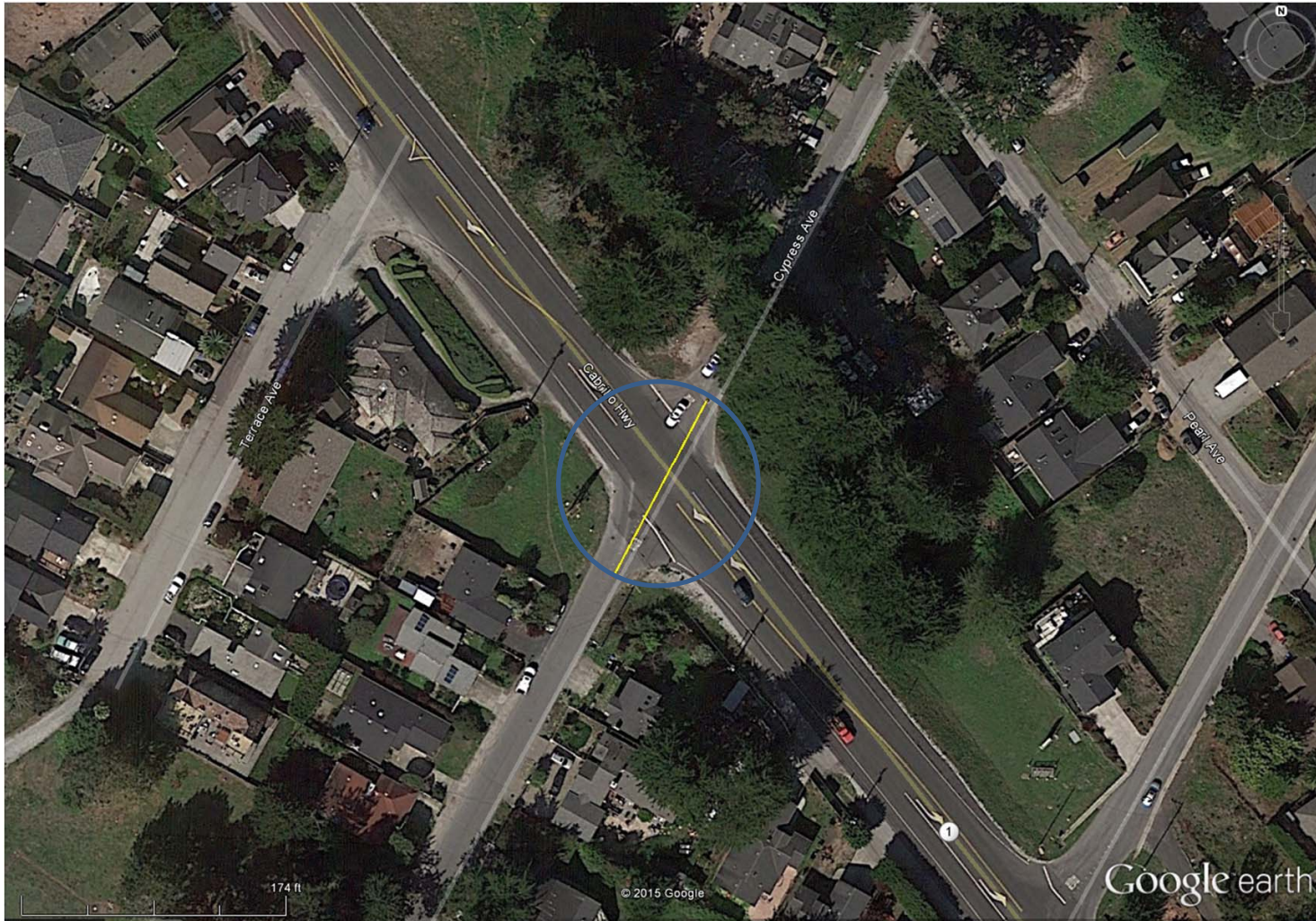
1 - Hwy 1 and 9th St ~130ft



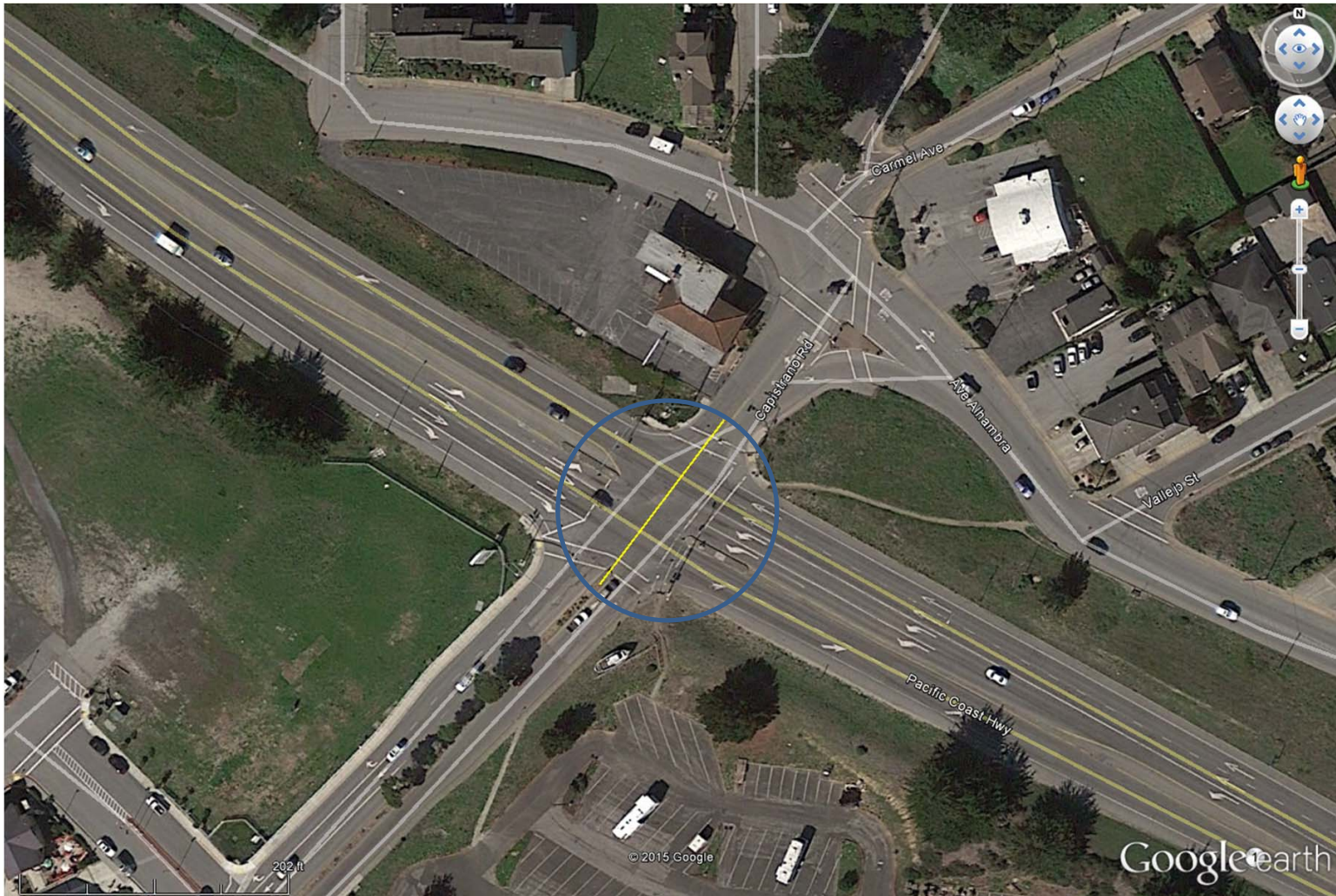
2- Hwy 1 and Etheldore St (N) ~130ft



3- Hwy1 and Cypress Ave ~130ft



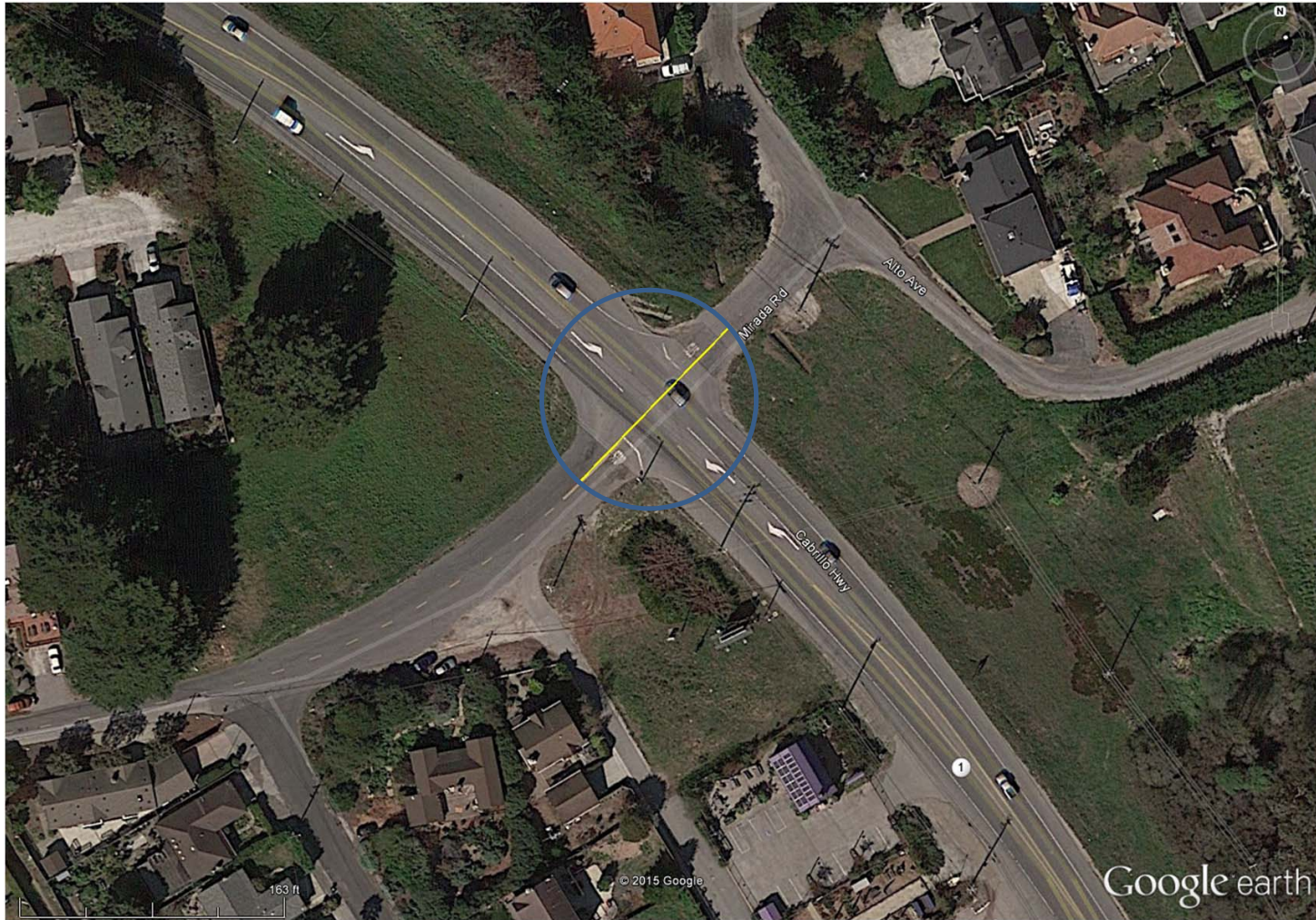
4-Hwy 1 and Capistrano Rd (S) ~150ft



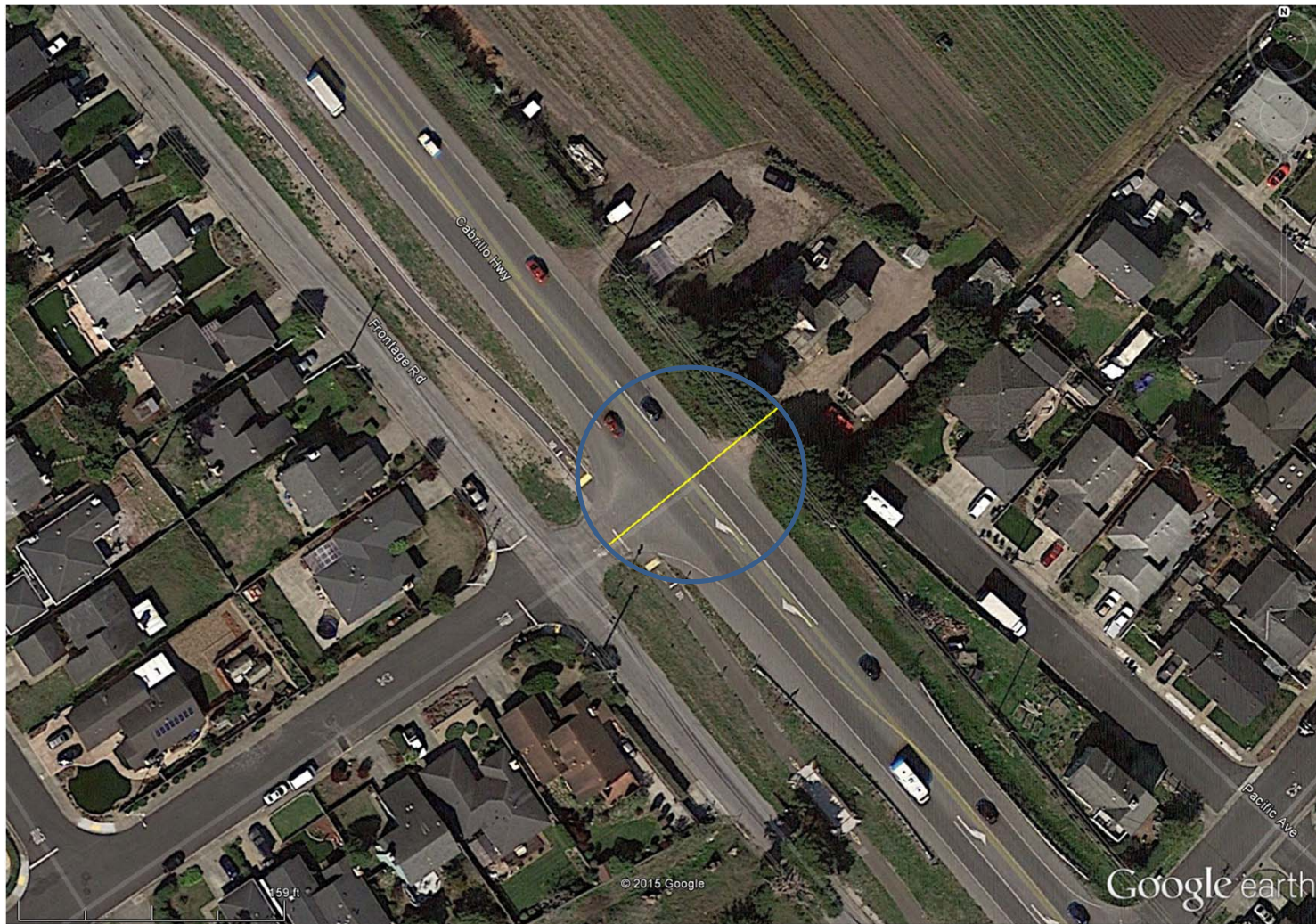
5- Hwy 1 and Coronado St ~130ft



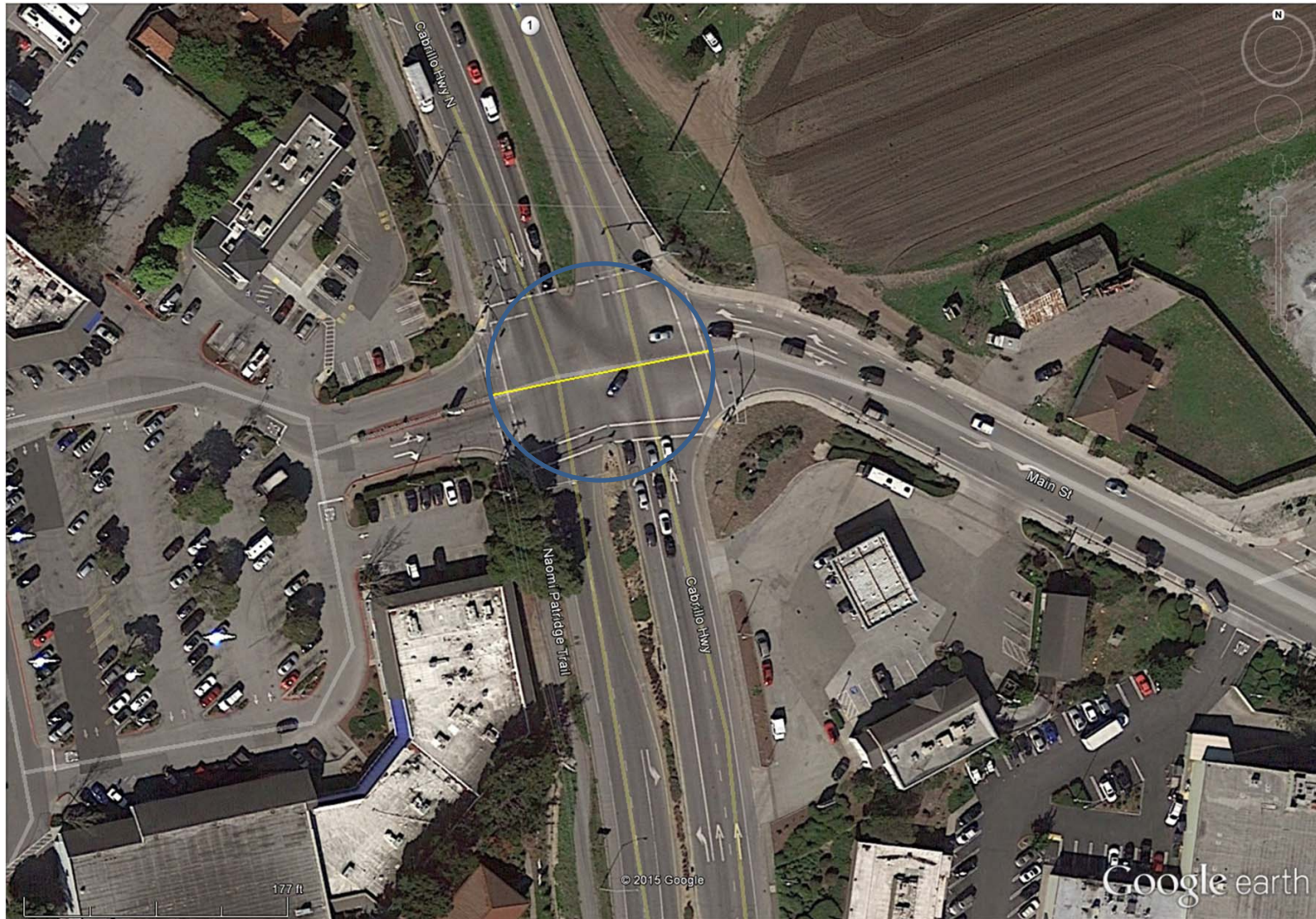
6- Hwy 1 and Mirada Rd ~130ft



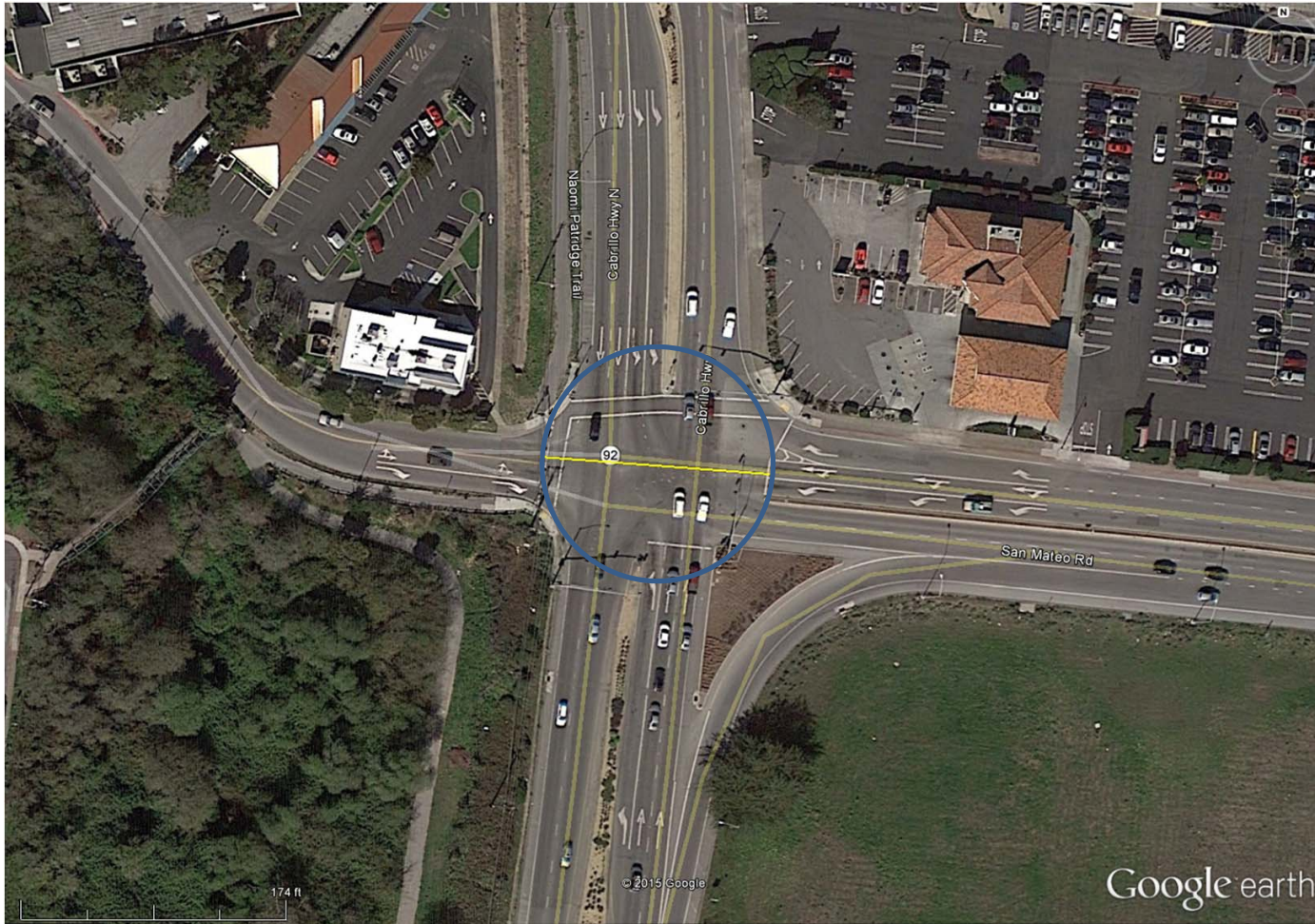
7-Hwy 1 and Kehoe Ave ~130ft



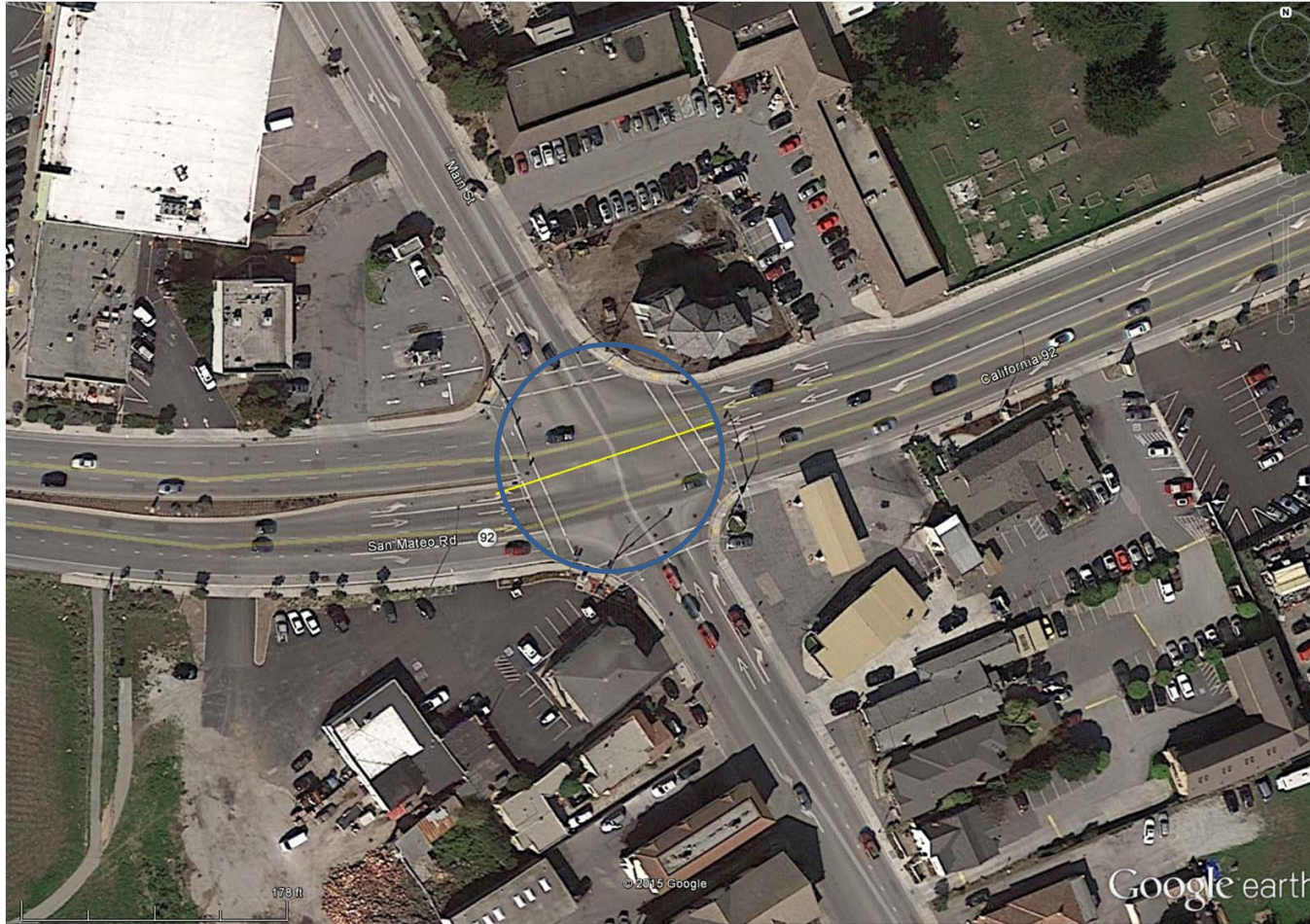
8- Hwy 1 and Main St ~150ft



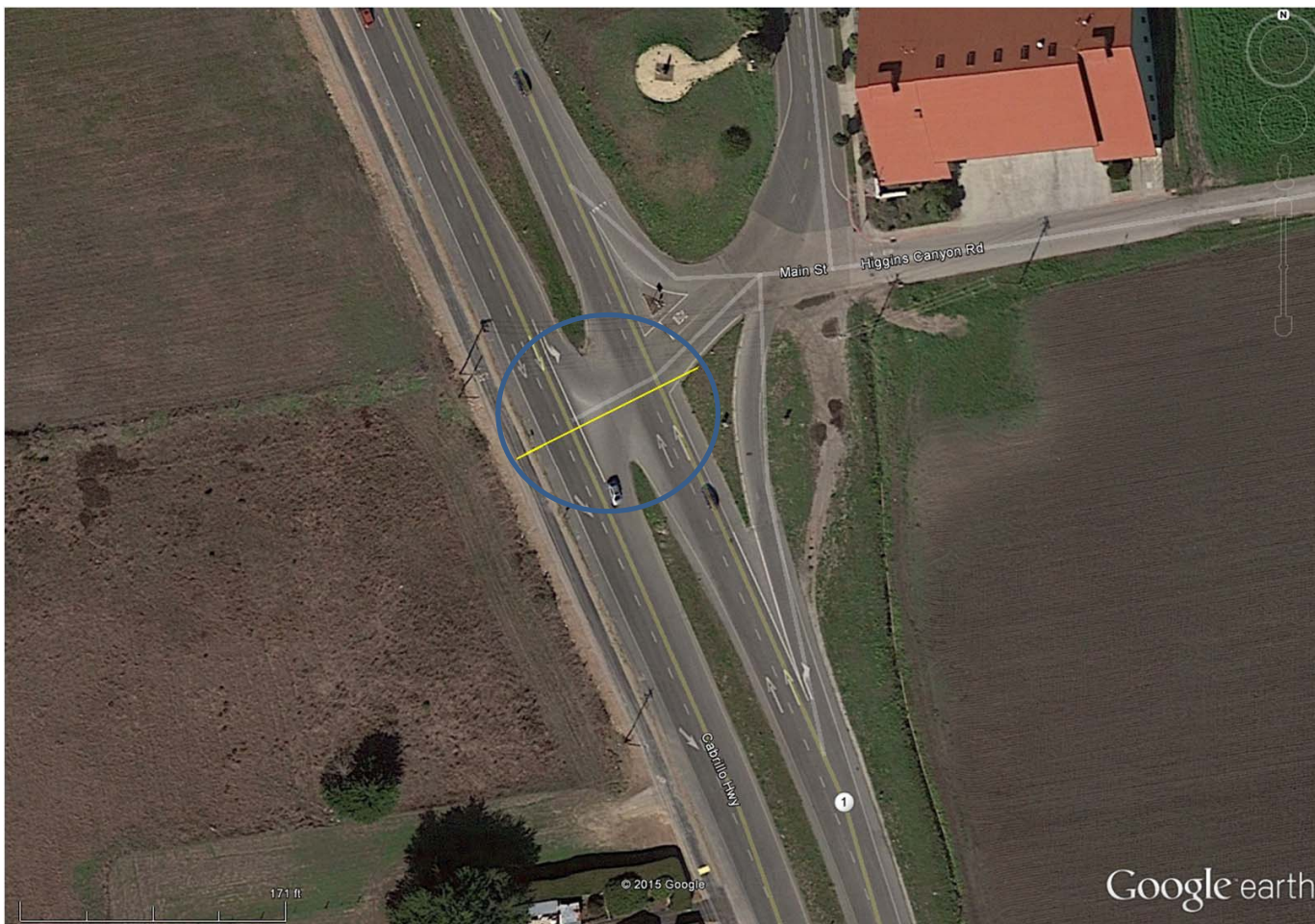
9- Hwy 1 and SR92 ~150ft



10- Main St and SR92 ~150ft



11-Hwy 1 and Higgins Canyon Rd/Main St ~130ft



12-SR92 and SR35 (E) ~130ft

