

COUNTY OF SAN MATEO CALIFORNIA

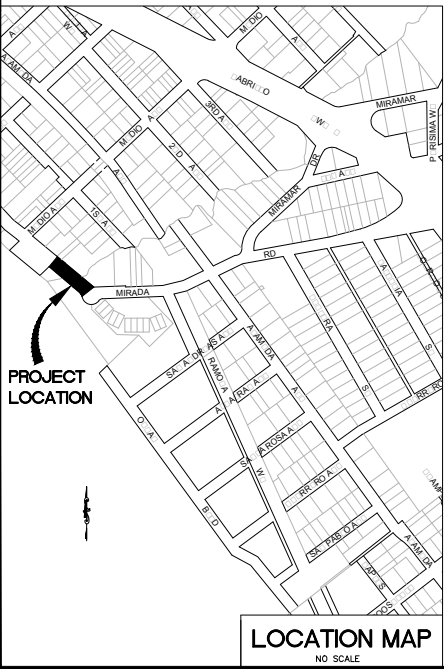
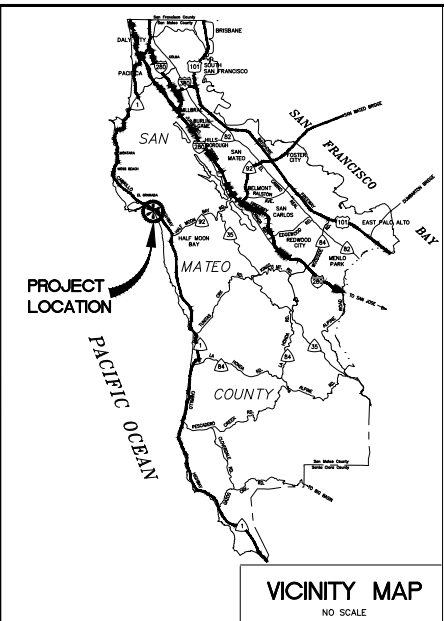


APPROVED:
DATE: _____
JAMES C. PORTER, DIRECTOR OF PUBLIC WORKS
R. C. E. # 48056 / EXPIRES 12-31-2019

MIRADA ROAD PEDESTRIAN BRIDGE REPLACEMENT

TOTAL PROJECT LENGTH, APPROXIMATELY 0.05 MILE(S)

TO BE SUPPLEMENTED BY STATE OF CALIFORNIA DEPARTMENT OF TRANSPORTATION STANDARD PLANS DATED MAY 2006 AND ADOPTED BY SAN MATEO COUNTY, NOVEMBER 14, 2006, BY RESOLUTION NO. 68389



ABBREVIATIONS:

- AC ASPHALTIC CONCRETE
- BFP BACK FLOW PREVENTER
- CL CENTER LINE
- CP CONTROL POINT
- CONC CONCRETE
- DEP DEPRESSION
- E ELEC
- FDC FIRE DEPARTMENT CONNECTION
- FH FIRE HYDRANT
- FL FLOW LINE
- G GAS
- GV GAS VALVE
- HV HIGH VOLTAGE
- HYD HYDRANT
- IRR IRRIGATION
- LC LIGHTING CONDUIT
- RW RIGHT OF WAY
- SD STORM DRAIN
- SL STREET LIGHT
- SS SANITARY SEWER
- SSAS SMALL UNMANNED AERIAL SYSTEM
- TW TOP BACK OF WALL
- TC TOP OF CURB
- TELE TELEPHONE
- TYP TYPICAL
- TW TOP FACE OF WALL
- W WATER
- WV WATER VALVE

LEGEND:

- SO --- STORM DRAIN LINE (EX) PROFILE
- SS --- SANITARY SEWER LINE "ACTIVE" PROFILE
- W --- WATER LINE "ACTIVE" PROFILE
- Abn --- ACP WATER LINE (Abn) PROFILE
- Abn --- GAS LINE (Abn) PROFILE
- G --- GAS LINE "ACTIVE" PROFILE
- Abn --- GAS LINE "ACTIVE" PROFILE
- EX --- JOINT COMMUNICATION LINE (EX) PROFILE
- EX --- JOINT COMMUNICATION LINE (EX) PROFILE
- --- RIGHT OF WAY

LEGEND:

- ⊕ FIRE HYDRANT
- ⊕ FIRE HYDRANT MARKERS
- ☐ MAILBOX
- ⊕ SIGN
- ⊕ MONUMENT
- ⊕ BENCHMARK
- ⊕ DRIVEWAY NUMBER
- ⊕ HOUSE NUMBER ADDRESS
- ⊕ DETAIL NUMBER AND SHEET
- ⊕ EXISTING TREE
- FENCE / WALL
- ⊕ CLASS 1 FLEXIBLE OBJECT MARKER
- ⊕ NAIL AND WASHER
- ⊕ WATER METER
- ⊕ WATER VALVE
- ⊕ GAS VALVE
- ⊕ JOINT UTILITY POLE
- ⊕ TELEPHONE POLE
- ⊕ GUY WIRE ANCHOR
- ⊕ SANITARY SEWER MANHOLE
- ⊕ SANITARY SEWER CLEANOUT
- ⊕ SANITARY SEWER FLUSHING INLET
- ⊕ STORM DRAIN MANHOLE
- ⊕ UNDERDRAIN
- ⊕ BUBBLE-UP BOX
- ⊕ UNKNOWN MANHOLE

NOTES:

- CONTRACTOR SHALL CONFINE HIS OPERATIONS AND ACTIVITIES WITHIN THE PROJECT LIMITS, CONSISTING OF ROAD RIGHT-OF-WAY, RIGHTS OF ENTRY AND/OR PROJECT CONFORMS, AS SHOWN ON THE PLANS AND AS DIRECTED BY THE ENGINEER.
- CONTINUOUS DUST CONTROL SHALL BE PROVIDED AS REQUIRED BY SECTION 17 OF THE SPECIAL PROVISIONS AND AS DIRECTED BY THE ENGINEER.
- LOCATIONS AND DEPTHS OF EXISTING UTILITIES SHOWN ON THE PLANS ARE APPROXIMATE ONLY. CONTRACTOR SHALL BE RESPONSIBLE FOR CONTACTING THE UTILITIES TO DETERMINE EXACT LOCATIONS AND DEPTHS. CONTRACTOR SHALL CALL USA NORTH 811 (USA) UNDERGROUND SERVICE ALERT A MINIMUM OF FORTY-EIGHT (48) HOURS IN ADVANCE OF ANY EXCAVATION OR TRENCHING WORK. USA MAY BE CONTACTED EITHER ON-LINE AT USANORTH811.ORG OR BY PHONE BY DIALING (800) 227-2600 OR 811. WHEN CALLING, BE PREPARED TO GIVE LOCATION AND NATURE OF WORK, START DATE, COMPANY NAME, ADDRESS AND TELEPHONE NUMBER.
- PLANS MAY NOT SHOW ALL EXISTING WATER, GAS OR SANITARY SEWER LATERALS. CONTRACTOR SHALL BE RESPONSIBLE FOR VERIFICATION AND PRESERVATION OF ALL SUCH FACILITIES WHICH ARE NOT TO BE RELOCATED.
- CONTRACTOR IS ADVISED THAT EXCAVATION MAY CONFLICT WITH SANITARY SEWER LATERALS, GAS LINES, WATER LINES AND OTHER UNDERGROUND UTILITIES. ANY DAMAGE TO EXISTING FACILITIES CAUSED BY THE CONTRACTOR SHALL BE REPAIRED AT THE CONTRACTOR'S EXPENSE.
- DRIVEWAY OPENINGS AND CONFORM LOCATIONS SHOWN ARE APPROXIMATE ONLY. EXACT LOCATIONS WILL BE DETERMINED IN THE FIELD BY THE ENGINEER. SURFACED SHOULDER CONFORM LIMITS ARE AS INDICATED AT 3 FEET FROM OUTSIDE EDGE OF THE GUTTER, UNLESS DIRECTED OTHERWISE BY THE ENGINEER OR OTHERWISE NOTED ON THE PLANS.
- NO TREES, VEGETATION OR IMPROVEMENTS (INCLUDING FENCES) SHALL BE REMOVED WITHOUT THE PRIOR WRITTEN CONSENT AND APPROVAL OF THE ENGINEER. VEGETATION AND IMPROVEMENTS WHICH ARE DESIGNATED TO BE REMOVED SHALL BECOME THE PROPERTY OF THE CONTRACTOR, UNLESS OTHERWISE DIRECTED BY THE ENGINEER. REFER TO PROJECT SPECIAL PROVISIONS SECTION 16 REGARDING REQUIREMENTS FOR ADVANCE NOTIFICATION OF PROPERTY OWNERS.
- THE CONTRACTOR'S ATTENTION IS DIRECTED TO SECTION 5-1.07 OF THE STANDARD SPECIFICATIONS. THE SURVEY AND ASSOCIATED STAKING SHALL BE IN CONFORMANCE WITH SECTION 100, CONSTRUCTION STAKING AND LAYOUT OF THE SPECIAL PROVISIONS.
- WHEN DIRECTED BY THE ENGINEER, CUT AND FILL SLOPE RATIOS SHALL BE VARIED TO AVOID TREES OR OTHER EXISTING IMPROVEMENTS.
- CONTRACTOR SHALL EXERCISE CARE WHEN EXCAVATING NEAR TREES AND ROOTS OF TREES TO REMAIN. SEE SECTION 19 OF THE SPECIAL PROVISIONS.
- ANY DAMAGE, AS A RESULT OF THE CONTRACTOR'S OPERATION, TO PAVEMENT AND BASE MATERIAL THAT IS TO REMAIN SHALL BE REPAIRED, OR REMOVED AND REPLACED WITH SAME TYPE OF MATERIAL OR APPROVED EQUAL, AS DIRECTED BY THE ENGINEER, AND AT THE SOLE EXPENSE OF THE CONTRACTOR. THE ENGINEER SHALL BE THE SOLE JUDGE OF THE ADEQUACY OF THE COMPLETED REMEDIAL WORK.
- CONTRACTOR'S ATTENTION IS DIRECTED TO THE CONSTRUCTION CENTERLINE ALIGNMENTS LISTED BELOW:
N-CL LINE - MIRADA ROAD
(BETWEEN MEDIO AVENUE AND RAMONA WAY)

RECORD DRAWINGS
Resident Engineer _____
Date _____

**INFORMATION ONLY
NOT FOR CONSTRUCTION**

BENCHMARKS:
VERTICAL DATUM FOR THIS PROJECT IS NORTH AMERICAN VERTICAL DATUM OF 1988 (NAV88) PER NATIONAL GEODETIC BENCHMARK DESIGNATED N1240. A OPS ORUS WAS PERFORMED AND NGS BENCHMARK N1240 WAS TIED OUT AND FOUND TO BE 0.17' ABOVE THE OPS ELEVATION. PREVIOUS SURVEYS IN THE AREA FOUND AN ERROR OF 0.18' WHEN TYPING INTO N1240 AND HELD THE NGS BENCHMARK. BENCHMARK N1240 HELD FOR THIS SURVEY TO MATCH PREVIOUS SURVEY EFFORTS OF THE AREA. NGS BENCHMARK HT1441 WAS ALSO SEARCHED FOR AS A CHECK, BUT WAS NOT RECOVERED. BENCHMARK MAY HAVE BEEN DESTROYED OR BURIED.

BASIS OF BEARINGS:
5 MAPS 58, CORNER RECORD #08718 AND 112 M 47 HAVE VARYING BASIS OF BEARINGS. TO ACHIEVE 5 MAPS 58 AND CORNER RECORD #08718 BEARINGS ROTATE 015°02'8" TO BEARINGS SHOWN. TO ACHIEVE 112 M 47 BEARINGS ROTATE BEARINGS BY 00°01'14" TO BEARINGS SHOWN.

APPLICABLE STANDARD PLANS:
A20A

SHEET INDEX:

PAGE	TITLE	NAME
1	C01	TITLE SHEET & GENERAL NOTES
2	C02	EXISTING CONDITIONS
3	C03	BOUNDARY DETAIL
4	C04	DEMOLITION PLAN
5	C05	IMPROVEMENT PLAN
6	C06	CONSTRUCTION ACCESS PLAN
7	C07	BRIDGE PROFILE & SECTION PLAN
8	C08	BLUFF STABILIZATION PLAN
9	C09	BLUFF STABILIZATION CONCEPT
10	C004	BLUFF STABILIZATION DETAIL
11	S1	GENERAL BRIDGE PLAN
12	S2	ABUTMENT DETAILS

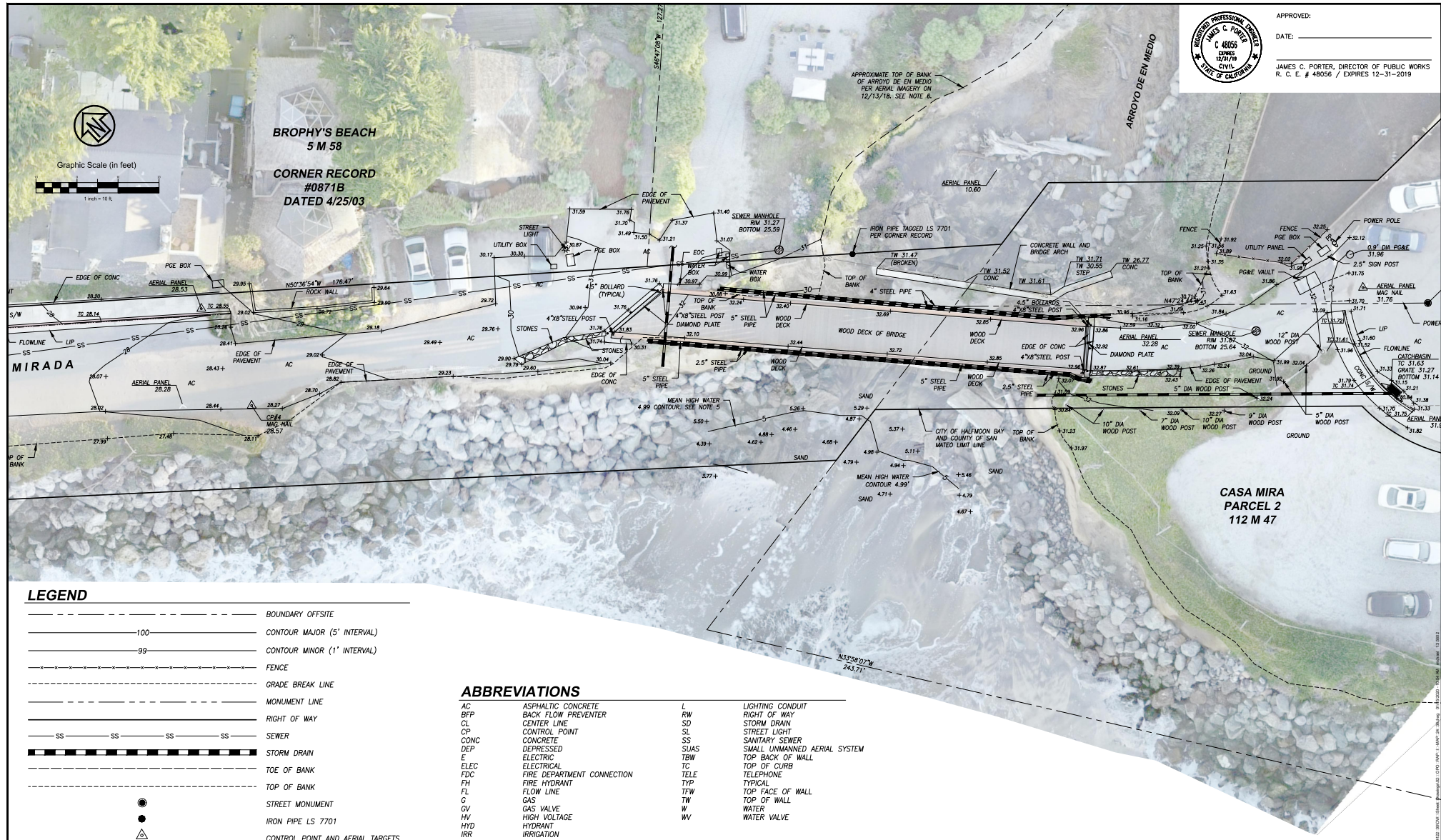
65% SUBMITTAL
JAN. 16, 2020
NOT FOR CONSTRUCTION



DESIGNED BY: RCS	SCALE: AS SHOWN
CHECKED BY: RCS	DATE: 01/16/2020
DRAWN BY: MLV	FILE NO.: 4122700
MIRADA ROAD	
REVISION	DATE
JAMES C. PORTER, DIRECTOR OF PUBLIC WORKS SAN MATEO COUNTY	
555 COUNTY CENTER, 5TH FLOOR REDWOOD CITY, CALIFORNIA 94063	
FOR REDUCED PLANS ORIGINAL SCALE IS IN INCHES	
0 1 2 3 4	
.01 SHEET 1 OF 12	



APPROVED: _____
 DATE: _____
 JAMES C. PORTER, DIRECTOR OF PUBLIC WORKS
 R. C. E. # 48056 / EXPIRES 12-31-2019



LEGEND

---	BOUNDARY OFFSITE
---100---	CONTOUR MAJOR (5' INTERVAL)
---99---	CONTOUR MINOR (1' INTERVAL)
---	FENCE
---	GRADE BREAK LINE
---	MONUMENT LINE
---	RIGHT OF WAY
SS	SEWER
SS	STORM DRAIN
---	TOE OF BANK
---	TOP OF BANK
●	STREET MONUMENT
●	IRON PIPE LS 7701
△	CONTROL POINT AND AERIAL TARGETS

ABBREVIATIONS

AC	ASPHALTIC CONCRETE	L	LIGHTING CONDUIT
BFP	BACK FLOW PREVENTER	RW	RIGHT OF WAY
CL	CENTER LINE	SD	STORM DRAIN
CP	CONTROL POINT	SL	STREET LIGHT
CONC	CONCRETE	SS	SANITARY SEWER
DEP	DEPRESSED	SUAS	SMALL UNMANNED AERIAL SYSTEM
E	ELECTRIC	TBW	TOP BACK OF WALL
ELEC	ELECTRICAL	TC	TOP OF CURB
FDC	FIRE DEPARTMENT CONNECTION	TELE	TELEPHONE
FH	FIRE HYDRANT	TYP	TYPICAL
FL	FLOW LINE	TFW	TOP FACE OF WALL
G	GAS	TW	TOP OF WALL
GV	GAS VALVE	W	WATER
HV	HIGH VOLTAGE	WV	WATER VALVE
HYD	HYDRANT		
IRR	IRRIGATION		

65% SUBMITTAL
 JAN 16, 2020
 NOT FOR CONSTRUCTION

APPROVED DATE: _____

NAME, CITY, ENGINEER
 HALF MOON BAY
 R.C.E. # 00000 / EXPIRES 00-00-0000

APPROVED DATE: _____

ROBERT C. STEVENS, P.E.
 CSWIS2 ENGINEERING GROUP, INC.
 R.C.E. # 058660 / EXPIRES 12-31-2020



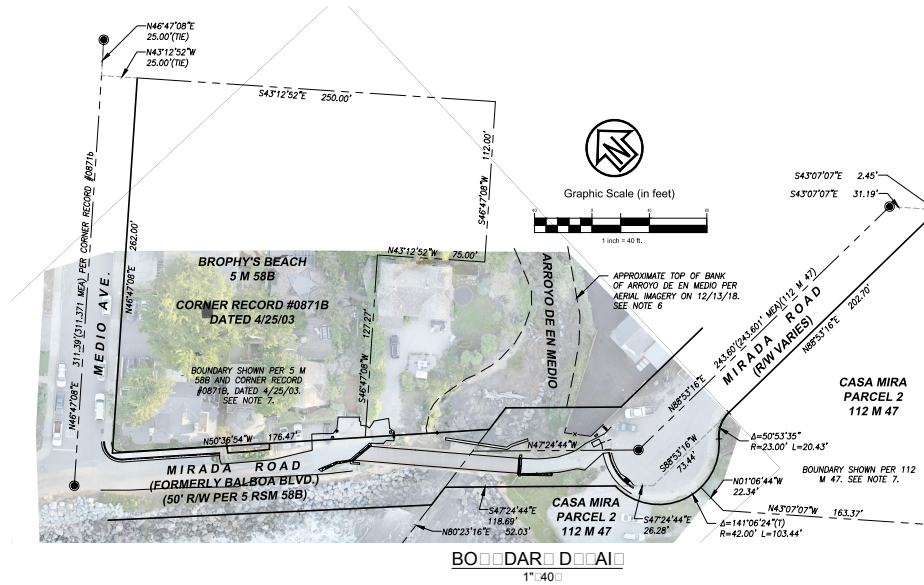
DESIGNED BY: RCS	IS	OD	IO	OS	SCALE: AS SHOWN
CHECKED BY: RCS	MIRADA ROAD				DATE: 01/16/2020
DRAWN BY: MAJ	SAN MATEO COUNTY				FILE NO.: 4122700
REVISION	DATE	JAMES C. PORTER, DIRECTOR OF PUBLIC WORKS	555 COUNTY CENTER, 5TH FLOOR REDWOOD CITY, CALIFORNIA 94063		
FOR REDUCED PLANS ORIGINAL SCALE IS IN INCHES					0 1 2 3 4
					:02 SHEET 2 OF 12



APPROVED:
DATE: _____
JAMES C. PORTER, DIRECTOR OF PUBLIC WORKS
R. C. E. # 48056 / EXPIRES 12-31-2019

NOTES

- DISTANCES SHOWN ARE IN FEET AND DECIMALS THEREOF.
- HORIZONTAL DATUM IS CCS83, NAD83, ZONE 3, EPOCH 2010.0000 PER GPS OPUS SOLUTION. COMBINATION SCALE FACTOR 0.99994288.
- VERTICAL DATUM FOR THIS PROJECT IS NORTH AMERICAN VERTICAL DATUM OF 1988 (NAVD88) PER NATIONAL GEODETIC BENCHMARK DESIGNATED N1240. A GPS OPUS WAS PERFORMED AND NGS BENCHMARK N1240 WAS TIED OUT AND FOUND TO BE 0.17' ABOVE THE GPS ELEVATION. PREVIOUS SURVEYS IN THE AREA FOUND AN ERROR OF 0.19' WHEN TYING INTO N1240 AND HELD THE NGS BENCHMARK. BENCHMARK N1240 HELD FOR THIS SURVEY TO MATCH PREVIOUS SURVEY EFFORTS OF THE AREA. NGS BENCHMARK HT1441 WAS ALSO SEARCHED FOR AS A CHECK, BUT WAS NOT RECOVERED. BENCHMARK MAY HAVE BEEN DESTROYED OR BURIED.
- TOPOGRAPHY SHOWN WAS PERFORMED BY FIELD SURVEY ON DECEMBER 12TH AND 13TH OF 2018.
- CONTOUR 4.99 WAS PLOTTED ON SHEET C02 TO SHOW MEAN HIGH WATER PER NOAA STATION 9414131, PILLAR POINT HARBOR T.M. 120, EPOCH 1983-2001. (<https://tidesandcurrents.noaa.gov/datums.html?id=9414131>) (<https://dpmwmaps.maps.arcgis.com/home/item.html?id=020A92B853AB41EE83508A0C6635D5FD>)
- HIGH RESOLUTION ORTHOMOSAIC SHOWN HEREON IS BASED ON IMAGERY COMPILED FROM A sUAS (DRONE) FLIGHT ON DECEMBER 13, 2018 BETWEEN 7:45AM AND 8:05AM (DURING LOW TIDE) AND GROUND CONTROL. ORTHOMOSAIC MEAN ERROR RESIDUAL 0.017'. DRONE FLIGHT PERFORMED BY A FAA LICENSED sUAS PILOT.
- 5 MAPS 58, CORNER RECORD #0871B AND 112 M 47 HAVE VARYING BASIS OF BEARINGS. TO ACHIEVE 5 MAPS 58 AND CORNER RECORD #0871B BEARINGS ROTATE 01°02'08" TO BEARINGS SHOWN. TO ACHIEVE 112 M 47 BEARINGS ROTATE BEARINGS BY 00°01'14" TO BEARINGS SHOWN.
- UNDERGROUND UTILITIES SHOWN HEREON ARE SCHEMATICALLY DRAWN. ACTUAL ROUTE MAY VARY. VERIFY IN FIELD BY POT HOLING PRIOR TO CONSTRUCTION. ADDITIONAL UTILITIES MAY EXIST THAT ARE NOT SHOWN HEREON.



LEGEND

---	BOUNDARY OFFSITE
---100---	CONTOUR MAJOR (5' INTERVAL)
---99---	CONTOUR MINOR (1' INTERVAL)
---	FENCE
---	GRADE BREAK LINE
---	MONUMENT LINE
---	RIGHT OF WAY
---SS---	SEWER
---	STORM DRAIN
---	TOE OF BANK
---	TOP OF BANK
●	STREET MONUMENT
●	IRON PIPE LS 7701
△	CONTROL POINT AND AERIAL TARGETS

ABBREVIATIONS

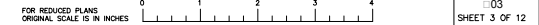
AC	ASPHALTIC CONCRETE	L	LIGHTING CONDUIT
BFP	BACK FLOW PREVENTER	RW	RIGHT OF WAY
CL	CONTROL LINE	SD	STORM DRAIN
CP	CONTROL POINT	SL	STREET LIGHT
CONC	CONCRETE	SS	SANITARY SEWER
DEP	DEPRESSED	SUAS	SMALL UNMANNED AERIAL SYSTEM
E	ELECTRIC	TBW	TOP BACK OF WALL
ELEC	ELECTRICAL	TC	TOP OF CURB
FDC	FIRE DEPARTMENT CONNECTION	TELE	TELEPHONE
FH	FIRE HYDRANT	TYP	TYPICAL
FL	FLOW LINE	TFW	TOP FACE OF WALL
G	GAS	TW	TOP OF WALL
GV	GAS VALVE	W	WATER
HV	HIGH VOLTAGE	WV	WATER VALVE
HYD	HYDRANT		
IRR	IRRIGATION		

APPROVED DATE:		APPROVED DATE:	
NAME, CITY ENGINEER		ROBERT C. STEVENS, P.E.	
HALF MOON BAY		CSWJST2 ENGINEERING GROUP, INC.	
R.C.E. # 00000 / EXPIRES 00-00-0000		R.C.E. # 058660 / EXPIRES 12-31-2020	

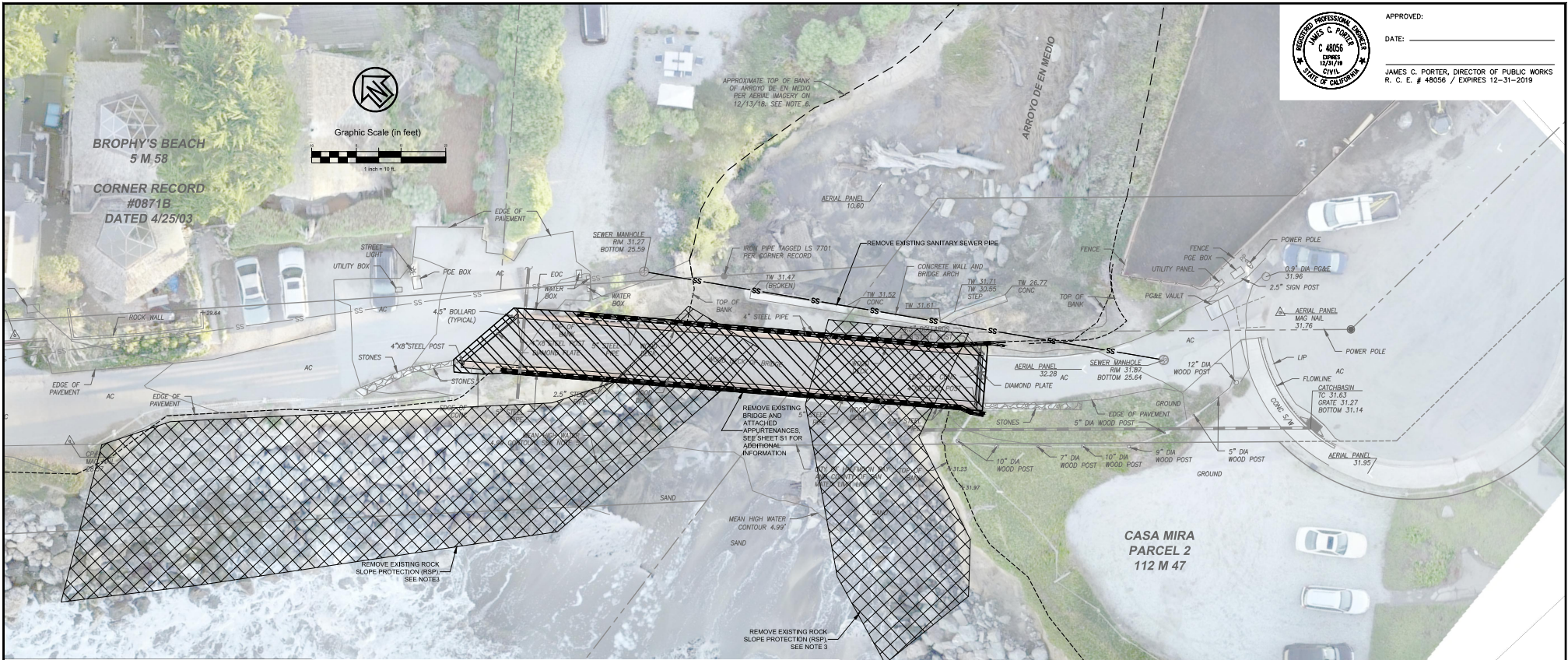
65% SUBMITTAL
JAN 16 2020
NOT FOR CONSTRUCTION



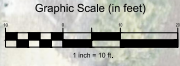
DESIGNED BY: RCS	BOODAR DAI	SCALE: AS SHOWN
CHECKED BY: RCS	MIRADA ROAD	DATE: 01/16/2020
DRAWN BY: M.J.V.		FILE NO.: 4122700
REVISION	DATE	JAMES C. PORTER, DIRECTOR OF PUBLIC WORKS
		SAN MATEO COUNTY
		555 COUNTY CENTER, 5TH FLOOR REDWOOD CITY, CALIFORNIA 94063



1:03
SHEET 3 OF 12



APPROVED: _____
 DATE: _____
 JAMES C. PORTER, DIRECTOR OF PUBLIC WORKS
 R. C. E. # 48056 / EXPIRES 12-31-2019



LEGEND

---	BOUNDARY OFFSITE
-----100-----	CONTOUR MAJOR (5' INTERVAL)
-----99-----	CONTOUR MINOR (1' INTERVAL)
-----	FENCE
-----	GRADE BREAK LINE
-----	MONUMENT LINE
-----	RIGHT OF WAY
SS-----SS-----SS-----SS-----	SEWER
-----	STORM DRAIN
-----	TOE OF BANK, SEE NOTE 4
-----	TOP OF BANK, SEE NOTE 4

HATCH LEGEND

	REMOVE EXISTING ROCK SLOPE PROTECTION, SEE NOTE 3
	REMOVE EXISTING BRIDGE AND ATTACHED APPURTENANCES

ABBREVIATIONS

AC	ASPHALTIC CONCRETE	L	LIGHTING CONDUIT
BFP	BACK FLOW PREVENTER	RW	RIGHT OF WAY
CL	CENTER LINE	SD	STORM DRAIN
CP	CONTROL POINT	SF	SQUARE FEET
CONC	CONCRETE	SL	STREET LIGHT
DEP	DEPRESSED	SS	SANITARY SEWER
E	ELECTRIC	SUAS	SMALL UNMANNED AERIAL SYSTEM
ELEC	ELECTRICAL	TBW	TOP BACK OF WALL
FDC	FIRE DEPARTMENT CONNECTION	TC	TOP OF CURB
FH	FIRE HYDRANT	TELE	TELEPHONE
FL	FLOW LINE	TYP	TYPICAL
G	GAS	TW	TOP FACE OF WALL
GV	GAS VALVE	TW	TOP OF WALL
HV	HIGH VOLTAGE	W	WATER
HYD	HYDRANT	WV	WATER VALVE
IRR	IRRIGATION		

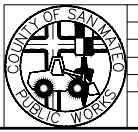
- NOTES**
- DURING DEMOLITION OF THE EXISTING SEWER PIPE, CONTRACTOR SHALL COORDINATE WITH THE GRANADA COMMUNITY SERVICES DISTRICT.
 - TO ACCESS THE SITE WITH CONSTRUCTION EQUIPMENT SEE SHEET C-50.
 - EXISTING ROCK SLOPE PROTECTION CONSISTS OF ROCK AND RANDOMLY BROKEN CONCRETE RUBBLE. ALL CONCRETE SHALL BE REMOVED. ROCK REMOVED BY BE RE-USED IF IT MEETS REQUIRED SIZE - SEE SPECIFICATIONS.
 - TOP OF BANK IS APPROXIMATELY THE LIMIT OF THE WATERS OF THE UNITED STATES.

EARTHWORK & DISTURBED AREA QUANTITIES

EARTHWORK, CUBIC YARDS OF MATERIAL: CUT: 500 CUBIC YARDS	DISTURBED CORPS JURISDICTION AREA: TOTAL: 6,500 SF (APPROXIMATE)
NOTES: CUT MATERIAL DOES NOT TAKE INTO CONSIDERATION MATERIAL THAT MAY BE REUSED ON SITE.	
FILL: 150 CUBIC YARDS (SEE IMPROVEMENT PLAN SHEET C05)	

APPROVED DATE: _____	APPROVED DATE: _____
NAME, CITY ENGINEER HALF MOON BAY	ROBERT C. STEVENS, P.E. CSWIS2 ENGINEERING GROUP, INC.
R.C.E. # 00000 / EXPIRES 00-00-0000	R.C.E. # 058660 / EXPIRES 12-31-2020

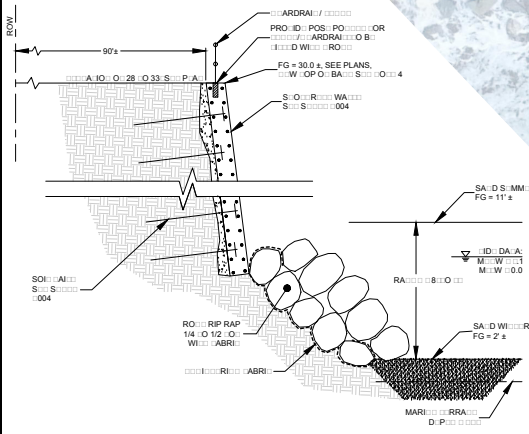
65% SUBMITTAL
 JAN 16, 2020
 NOT FOR CONSTRUCTION



DESIGNED BY: RCS	DATE: _____	SCALE: AS SHOWN
CHECKED BY: RCS	DATE: 01/16/2020	FILE NO.: 4122700
DRAWN BY: MAJ		
JAMES C. PORTER, DIRECTOR OF PUBLIC WORKS		555 COUNTY CENTER, 5TH FLOOR
SAN MATEO COUNTY		REDWOOD CITY, CALIFORNIA 94063
REVISION	DATE	
FOR REDUCED PLANS ORIGINAL SCALE IS IN INCHES		1:04
0 1 2 3 4		SHEET 4 OF 12



APPROVED: _____
 DATE: _____
 JAMES C. PORTER, DIRECTOR OF PUBLIC WORKS
 R. C. E. # 48056 / EXPIRES 12-31-2019



LEGEND

- _____ 100 _____ BOUNDARY OFFSITE
- _____ 99 _____ CONTOUR MAJOR (5' INTERVAL)
- _____ CONTOUR MINOR (1' INTERVAL)
- _____ FENCE
- _____ GRADE BREAK LINE
- _____ MONUMENT LINE
- _____ RIGHT OF WAY
- SS _____ SEWER
- _____ STORM DRAIN
- _____ TOE OF BANK, SEE NOTE 4
- _____ TOP OF BANK, SEE NOTE 4

HATCH LEGEND

- NEW ASPHALT PAVING
- SHOTCRETE / REVETMENT WALL, SEE SECTION THIS SHEET, SEE NOTE 3

NOTES

1. TO ACCESS THE SITE WITH CONSTRUCTION EQUIPMENT SEE SHEET C-50.
2. ROUTE PG&E ELECTRICAL CONDUITS ALONG EACH SIDE OF THE NEW BRIDGE.
3. THE EXISTING ROCK RIP RAP AT THE LOCATION WHERE THE SHOTCRETE / REVETMENT WALL CONFORMS INTO THE EXISTING ROCK RIP RAP SHALL BE REMOVED AND REPLACED IN A MANNER TO ENSURE IT IS STABILIZED.
4. TOP OF BANK IS APPROXIMATELY THE LIMIT OF THE WATERS OF THE UNITED STATES.

ABBREVIATIONS

AC	ASPHALTIC CONCRETE	IRR	IRRIGATION
BFP	BACK FLOW PREVENTER	L	LIGHTING CONDUIT
CL	CENTER LINE	ROW	RIGHT OF WAY
CP	CONTROL POINT	SD	STORM DRAIN
CONC	CONCRETE	SL	STREET LIGHT
DEP	DEPRESSED	SS	SANITARY SEWER
E	ELECTRIC	SUAS	SMALL UNMANNED AERIAL SYSTEM
ELEC	ELECTRICAL	TBW	TOP BACK OF WALL
FDC	FIRE DEPARTMENT CONNECTION	TC	TOP OF CURB
FDH	FIRE HYDRANT	TELE	TELEPHONE
FL	FLOW LINE	TYP	TYPICAL
G	GAS	TFW	TOP FACE OF WALL
GV	GAS VALVE	TW	TOP OF WALL
HV	HIGH VOLTAGE	W	WATER
HYD	HYDRANT	WV	WATER VALVE

EARTHWORK & DISTURBED AREA QUANTITIES

EARTHWORK, CUBIC YARDS OF MATERIAL:
 CUT: 500 CUBIC YARDS (SEE DEMOLITION PLAN SHEET C04)
 FILL: 150 CUBIC YARDS
 DISTURBED CORPS JURISDICTION AREA TOTAL: 1,200 SF (APPROXIMATE)
 NOTES: FILL MATERIAL DOES NOT TAKE INTO CONSIDERATION MATERIAL THAT MAY BE REUSED ON SITE

SECTION 5A: SHOTCRETE / REVETMENT WALL
 NOT TO SCALE (SEE SHEET C004 FOR ADDITIONAL DETAILS)

APPROVED DATE: _____

NAME: _____, CITY ENGINEER
 HALF MOON BAY
 R.C.E. # 00000 / EXPIRES 00-00-0000

APPROVED DATE: _____

ROBERT C. STEVENS, P.E.
 CSWJST2 ENGINEERING GROUP, INC.
 R.C.E. # 058660 / EXPIRES 12-31-2020



DESIGNED BY: RCS
 CHECKED BY: ROS
 DRAWN BY: MAW

IMPROVEMENT PROJECT
MIRADA ROAD

JAMES C. PORTER, DIRECTOR OF PUBLIC WORKS
 SAN MATEO COUNTY

555 COUNTY CENTER, 5TH FLOOR
 REDWOOD CITY, CALIFORNIA 94063

SCALE: AS SHOWN
 DATE: 01/16/2020
 FILE NO.: 4122700

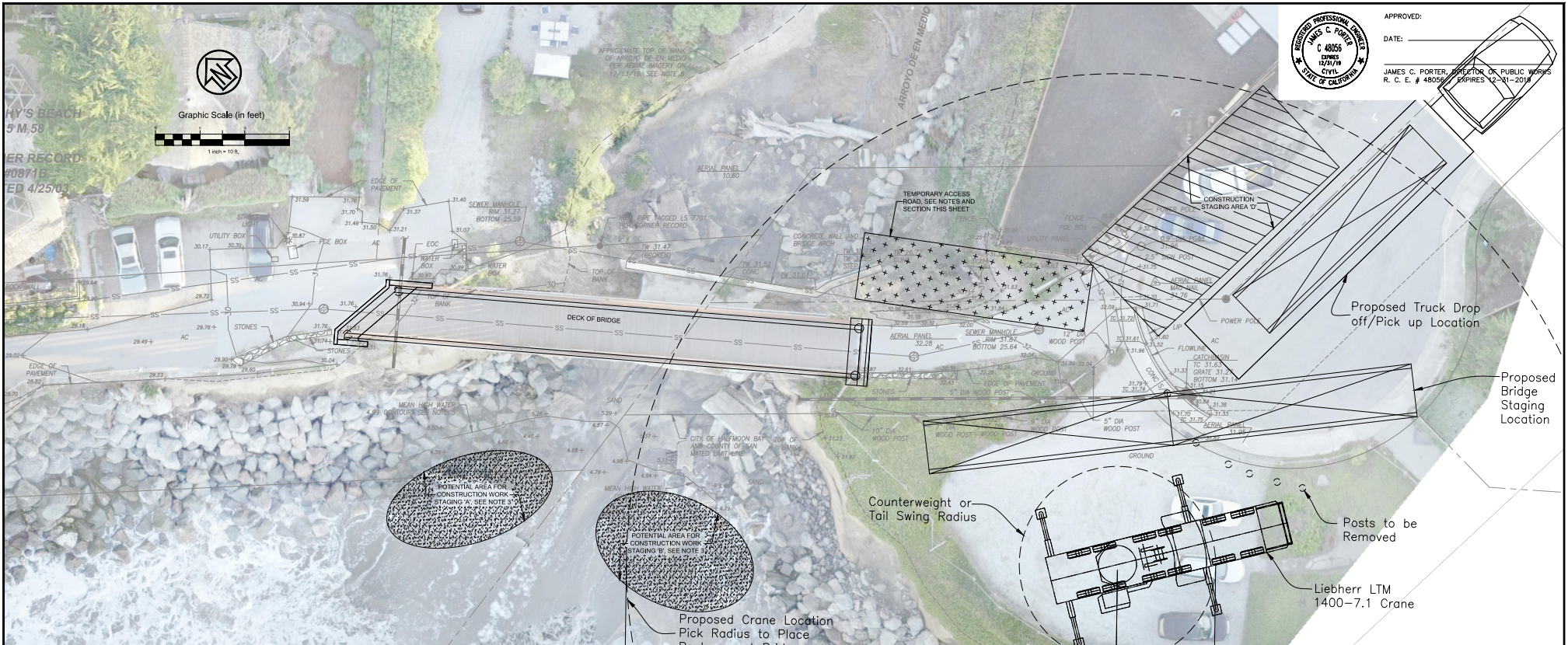
REVISION _____ DATE _____

FOR REDUCED PLANS ORIGINAL SCALE IS IN INCHES

1 2 3 4

1:05
 SHEET 5 OF 12

65% SUBMITTAL
 JAN 16 2020
 NOT FOR CONSTRUCTION



APPROVED: _____
 DATE: _____
 JAMES C. PORTER, DIRECTOR OF PUBLIC WORKS
 R. C. E. # 48056 / EXPIRES 12-31-2018

HY'S BEACH
 5 M. 58
 ER RECORD
 #0871B
 ED 4/25/03



LEGEND

---	BOUNDARY OFFSITE
---	CONTOUR MAJOR (5' INTERVAL)
---	CONTOUR MINOR (1' INTERVAL)
---	FENCE
---	GRADE BREAK LINE
---	MONUMENT LINE
---	RIGHT OF WAY
---	SEWER
---	STORM DRAIN
---	TOE OF BANK
---	TOP OF BANK

HATCH LEGEND

[Hatched Pattern]	TEMPORARY ACCESS ROAD, SEE SECTION THIS SHEET
[Dotted Pattern]	CONSTRUCTION STAGING, SEE NOTE 3
[Diagonal Lines]	CONSTRUCTION STAGING AREA

ABBREVIATIONS

AC	ASPHALTIC CONCRETE	RW	RIGHT OF WAY
CL	CENTER LINE	SD	STORM DRAIN
CONC	CONCRETE	SL	STREET LIGHT
ELEC	ELECTRICAL	SS	SANITARY SEWER
FDC	FIRE DEPARTMENT CONNECTION	TBW	TOP BACK OF WALL
FL	FLOW LINE	TC	TOP OF CURB
G	GAS	TYP	TYPICAL
GV	GAS VALVE	TFW	TOP FACE OF WALL
HV	HIGH VOLTAGE	TW	TOP OF WALL
IRR	IRRIGATION	W	WATER

- NOTES**
- ACCESS TO THE SITE FOR REMOVAL OF RSP WOULD OCCUR VIA CONSTRUCTION OF A TEMPORARY ACCESS ROAD FROM THE BRIDGE PLATEAU ON THE SOUTHEAST SIDE OF THE MIRADA ROAD PEDESTRIAN BRIDGE (UPSTREAM, LEFT BANK SIDE OF ARROYO DE EN MEDIO CREEK), AS SHOWN IN THE PLAN ON THIS SHEET.
 - APPROXIMATELY 30-40 CUBIC YARDS OF TEMPORARY FILL CONSISTING OF VARIOUSLY GRADED ROCKS AND BOULDERS WILL BE NEEDED TO SMOOTH AN APPROXIMATELY 15 FEET WIDE AND 60 FEET LONG TEMPORARY ACCESS PATH FOR THE EXCAVATOR. ACCESS WOULD BE PROVIDED DIRECTLY FROM THE BRIDGE PLATEAU TOWARDS ARROYO DE EN MEDIO CREEK. A PORTABLE MAT SYSTEM WILL BE INSTALLED FOR THE EXCAVATOR TO PREVENT IMPACTS TO THE CREEK CHANNEL AND BEACH. IF THE CREEK IS FLOWING DURING THE CONSTRUCTION PERIOD, WATER WILL BE DIVERTED VIA A FLEXIBLE PIPE TO DIVERT WATER AWAY FROM THE WORK AREA AND ALLOW ACCESS THROUGH THE CHANNEL. AREAS SHOWN ARE ONLY TO BE USED AS NECESSARY, WHEN CONSTRUCTION EQUIPMENT SUCH AS AN EXCAVATOR IS REQUIRED FOR REMOVAL AND REPLACEMENT OF RSP. SUCH OPERATIONS WILL BE IN ACCORDANCE WITH PERMITTING CONDITIONS, INCLUDING ADHERENCE TO PROPER BMPs AND WITHIN TIDAL WINDOWS FOR LOW TIDE.
 - THE AREA SHOWN AS THE CONSTRUCTION STAGING AREA IS PRIVATE PROPERTY AND SHALL ONLY BE USED WITH CONSENT FROM THE PROPERTY OWNER.

EARTHWORK & DISTURBED AREA QUANTITIES

EARTHWORK, CUBIC YARDS OF MATERIAL:
 CUT: 500 CUBIC YARDS (SEE DEMOLITION PLAN SHEET C04)
 FILL: 150 CUBIC YARDS (SEE IMPROVEMENT PLAN SHEET C05)

NOTE: CUT AND FILL MATERIAL DOES NOT TAKE INTO CONSIDERATION MATERIAL THAT MAY BE REUSED ON SITE

DISTURBED CORPS JURISDICTION AREA:
 TOTAL: 1,500 SF (APPROXIMATE)

APPROVED DATE:		APPROVED DATE:	
NAME, CITY ENGINEER		ROBERT C. STEVENS, P.E.	
HALF MOON BAY		CSW12 ENGINEERING GROUP, INC.	
R.C.E. # 00000 / EXPIRES 00-00-0000		R.C.E. # 058660 / EXPIRES 12-31-2020	

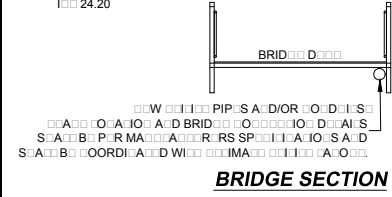
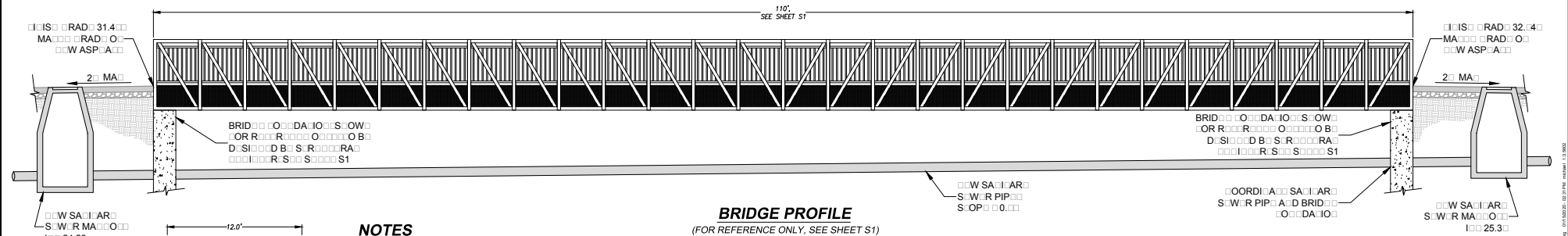
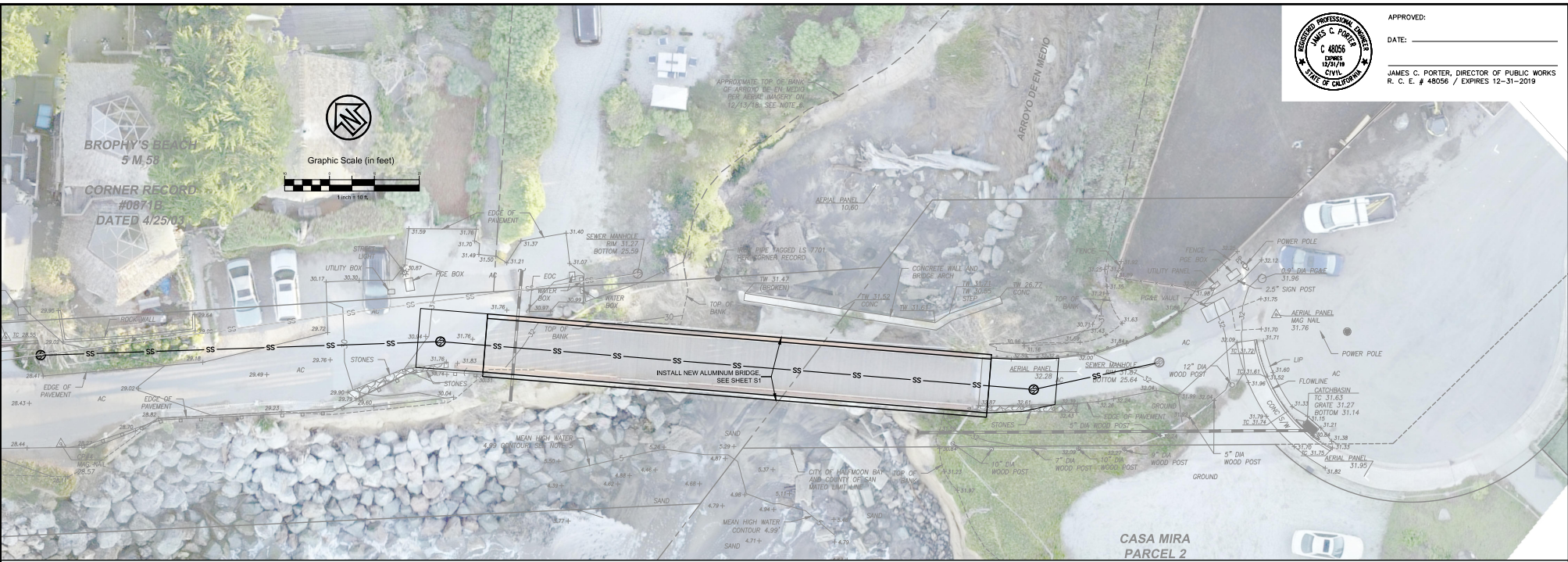
65% SUBMITTAL
 JAN 16 2020
 NOT FOR CONSTRUCTION



DESIGNED BY: RCS	ROBERT C. STEVENS, P.E.	SCALE: AS SHOWN
CHECKED BY: RCS		DATE: 01/16/2020
DRAWN BY: MAV		FILE NO.: 4122700
REVISION	DATE	JAMES C. PORTER, DIRECTOR OF PUBLIC WORKS
		SAN MATEO COUNTY
		555 COUNTY CENTER, 5TH FLOOR
		REDWOOD CITY, CALIFORNIA 94063
		FOR REDUCED PLANS ORIGINAL SCALE IS IN INCHES
		1 2 3 4
		106
		SHEET 6 OF 12



APPROVED: _____
 DATE: _____
 JAMES C. PORTER, DIRECTOR OF PUBLIC WORKS
 R. C. E. # 48056 / EXPIRES 12-31-2019



- NOTES**
- BRIDGE SHALL BE A WELDED ALUMINUM BRIDGE WITH NON-SLIP DECKING.
 - BRIDGE DESIGN, PROFILE AND SECTION ARE PRELIMINARY AND SHOWN FOR REFERENCE ONLY.

BRIDGE SECTION

65% SUBMITTAL
 JAN 16, 2020
 NOT FOR CONSTRUCTION

APPROVED DATE:	
NAME, CITY ENGINEER	
HALF MOON BAY	
R.C.E. # 00000 / EXPIRES 00-00-0000	

APPROVED DATE:	
ROBERT C. STEVENS, P.E.	
CSWJST2 ENGINEERING GROUP, INC.	
R.C.E. # 058660 / EXPIRES 12-31-2020	



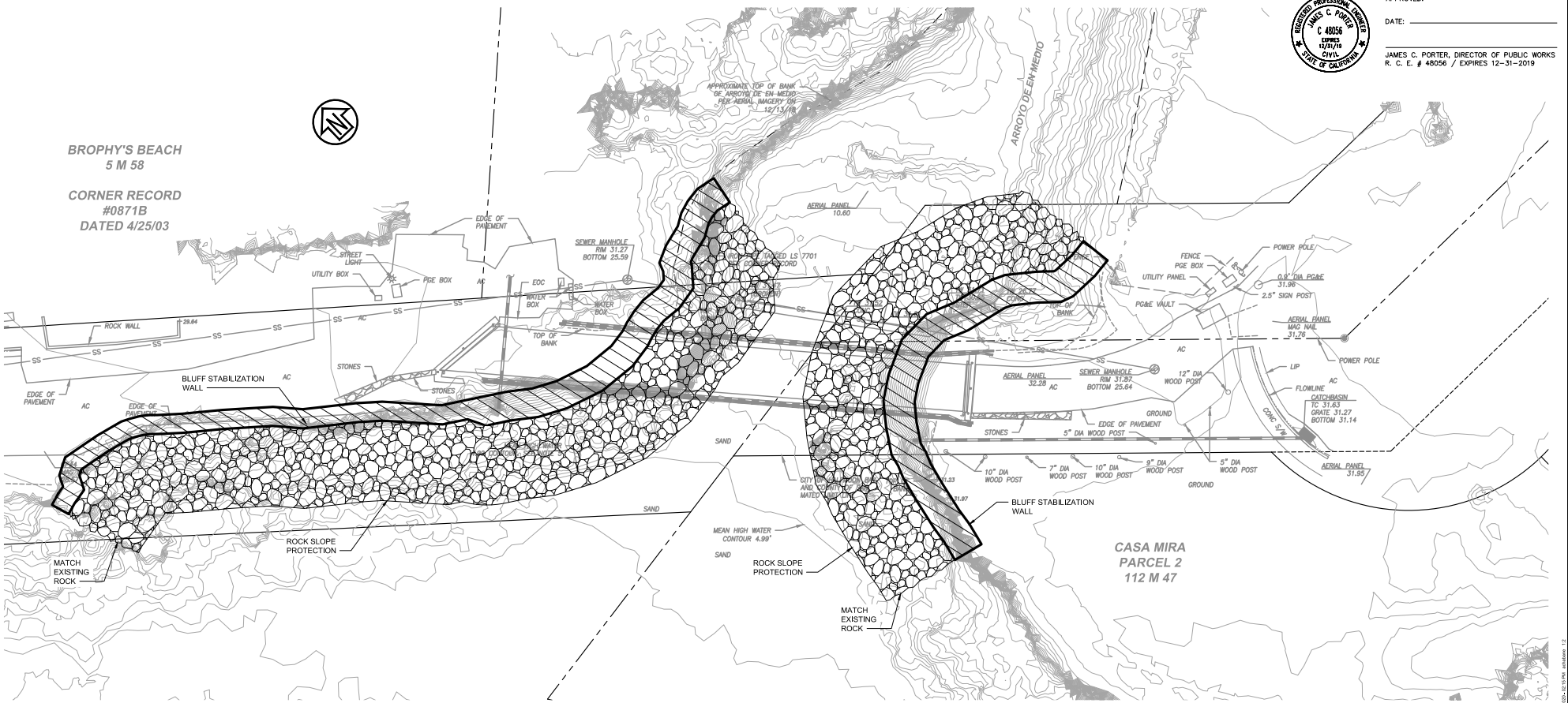
DESIGNED BY: RCS	BRIDGE PROJECT SUBMISSION PLAN	SCALE: AS SHOWN
CHECKED BY: RCS		DATE: 01/16/2020
DRAWN BY: MAJ	MIRADA ROAD	FILE NO.: 4122700
JAMES C. PORTER, DIRECTOR OF PUBLIC WORKS	555 COUNTY CENTER, 5TH FLOOR	
SAN MATEO COUNTY	REDWOOD CITY, CALIFORNIA 94063	
REVISION	DATE	
FOR REDUCED PLANS ORIGINAL SCALE IS IN INCHES		0 1 2 3 4
		10'
		SHEET 7 OF 12



APPROVED: _____
 DATE: _____
 JAMES C. PORTER, DIRECTOR OF PUBLIC WORKS
 R. C. E. # 48056 / EXPIRES 12-31-2019

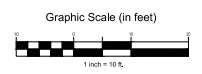


BROPHY'S BEACH
 5 M 58
CORNER RECORD
 #0871B
 DATED 4/25/03



BLUFF STABILIZATION PLAN
 SCALE: 1" = 10'

- NOTES:**
1. THE LIMITS, LENGTH AND ALIGNMENT FOR THE BLUFF STABILIZATION SHOWN ON THIS DRAWINGS IS APPROXIMATE. CONTRACTOR SHALL FOLLOW THE SURFACE OF THE EXISTING BLUFF.
 2. ROCK SLOPE PROTECTION NOT SHOWN FOR CLARITY.



65% SUBMITTAL
 JAN 16, 2020
 NOT FOR CONSTRUCTION

APPROVED DATE:	
NAME, CITY ENGINEER	
HALF MOON BAY	
R.C.E. # 00000 / EXPIRES 00-00-0000	

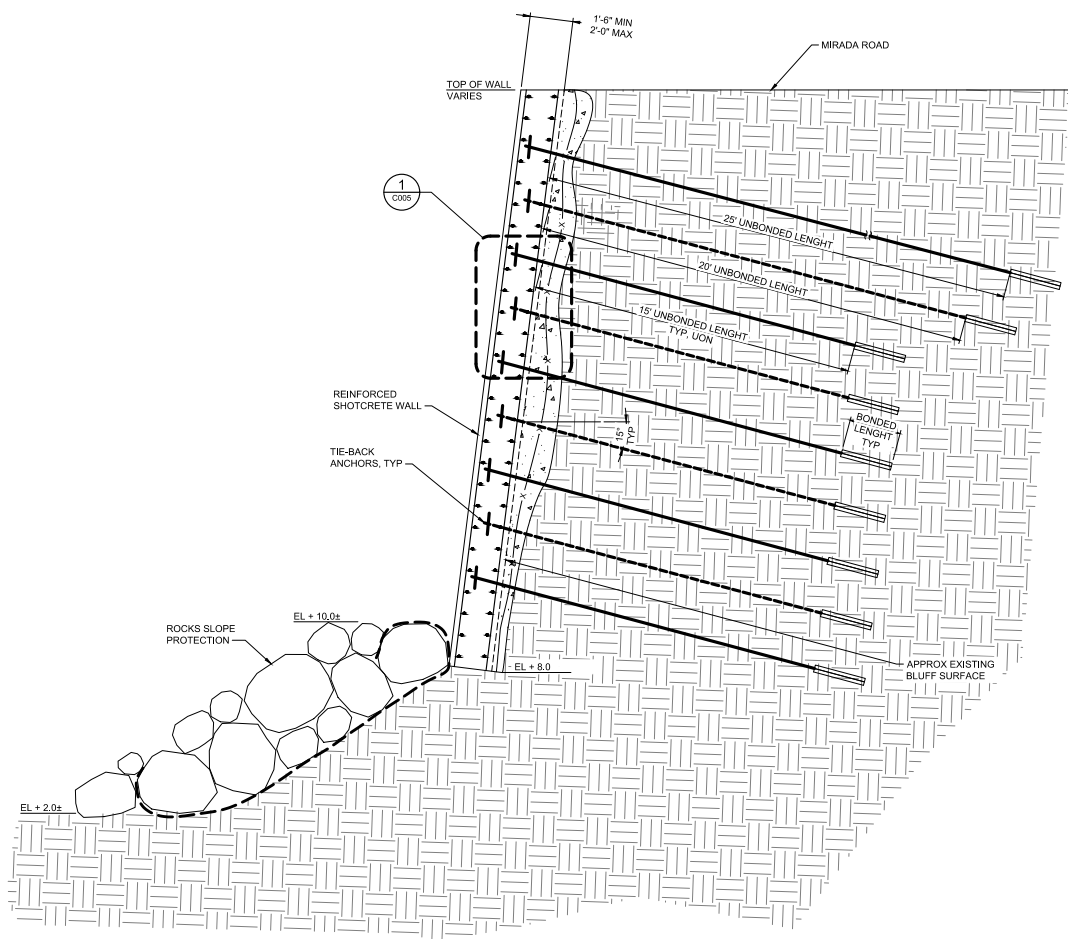
APPROVED DATE:	
	2185 N. CALIFORNIA BLVD., SUITE 500 WALNUT CREEK, CA 94596 925-944-5411
DILIP R. TRIVEDI	
MOFFATT & NICHOL	
R.C.E. # XXXXXX / EXPIRES XX-XX-XXXX	



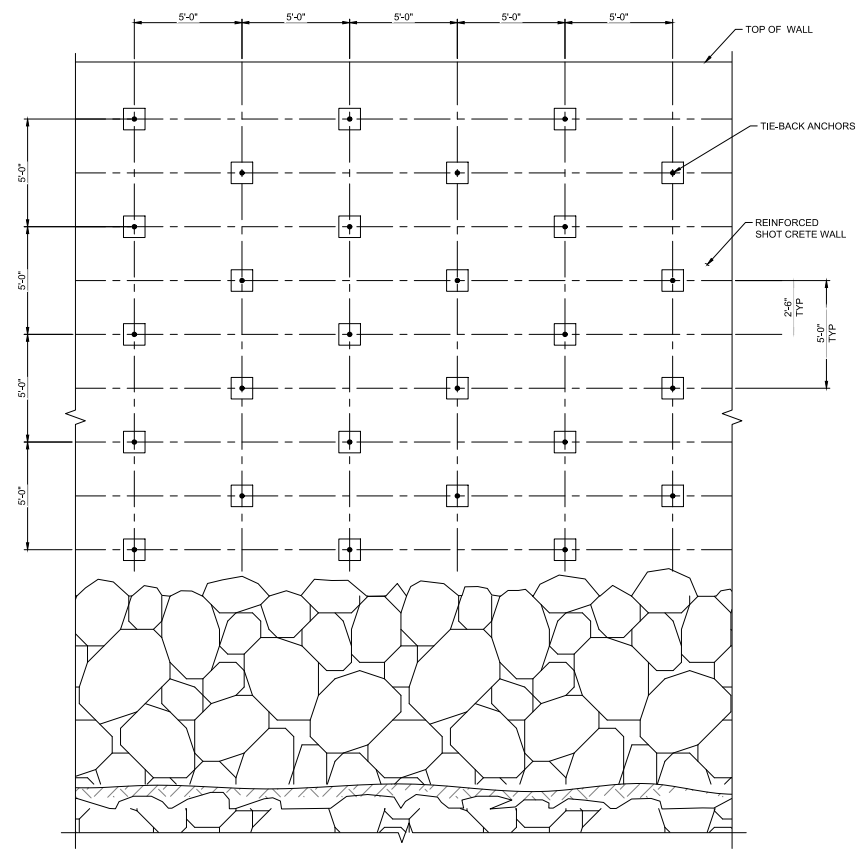
DESIGNED BY: DAU	MIRADA ROAD BRIDGE AND BLUFF STABILIZATION	SCALE: AS SHOWN
CHECKED BY: JFJ	BLUFF STABILIZATION PLAN	DATE: 01/16/2020
DRAWN BY: PH		FILE NO.: XXXXXX
REVISION	DATE	JAMES C. PORTER, DIRECTOR OF PUBLIC WORKS SAN MATEO COUNTY
		555 COUNTY CENTER, 5TH FLOOR REDWOOD CITY, CALIFORNIA 94063
FOR REVISED PLANS ORIGINAL SCALE IS IN INCHES		C003 SHEET # OF 12



APPROVED: _____
 DATE: _____
 JAMES C. PORTER, DIRECTOR OF PUBLIC WORKS
 R. C. E. # 48056 / EXPIRES 12-31-2019

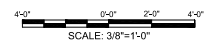


1
 0095



B
 ELEVATION
 SCALE: 3/8" = 1'-0"

A
 SECTION
 SCALE: 3/8" = 1'-0"



65% SUBMITTAL
 JAN 16, 2020
 NOT FOR CONSTRUCTION

APPROVED DATE:	
NAME, CITY ENGINEER	
HALF MOON BAY	
R.C.E. # 00000 / EXPIRES 00-00-0000	

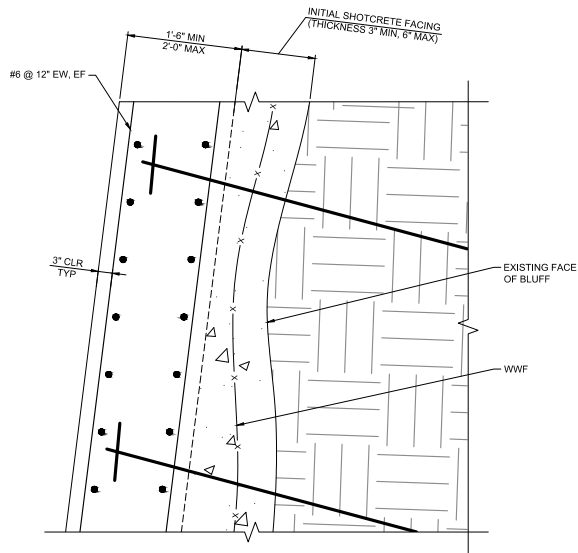
APPROVED DATE:	
2185 N. CALIFORNIA BLVD., SUITE 500 WALNUT CREEK, CA 94596 925-944-5411	
MOFFATT & NICHOL	
DILIP R. TRIVEDI	
MOFFATT & NICHOL	
R.C.E. # XXXXXX / EXPIRES XX-XX-XXXX	



DESIGNED BY: DAU	MIRADA ROAD BRIDGE AND BLUFF STABILIZATION	SCALE: AS SHOWN
CHECKED BY: JFJ	BLUFF STABILIZATION CONCEPT	DATE: 01/16/2020
DRAWN BY: PFI		FILE NO.: XXXXXX
REVISION	DATE	JAMES C. PORTER, DIRECTOR OF PUBLIC WORKS SAN MATEO COUNTY
		555 COUNTY CENTER, 5TH FLOOR REDWOOD CITY, CALIFORNIA 94063
FOR REVISED PLANS ORIGINAL SCALE IS IN INCHES		C004 SHEET 9 OF 12

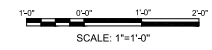


APPROVED:
 DATE: _____
 JAMES C. PORTER, DIRECTOR OF PUBLIC WORKS
 R. C. E. # 48056 / EXPIRES 12-31-2019



1 STEEL- REINFORCEMENT DETAIL
 SCALE: 1" = 1'-0"

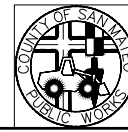
- NOTES:**
1. TIE-BACK ANCHOR IS A DESIGN-BUILD SYSTEM.
 2. PRESSURE-GROUTED ANCHORS SHALL BE USED.
 3. CONTRACTOR SHALL DETERMINE DRILLING AND GROUTING METHOD FOR TIE-BACK ANCHORS, INCLUDING BOND LENGTH.
 4. EACH TIE-BACK ANCHORS SHALL HAVE A MINIMUM DESIGN CAPACITY OF 30 KIPS.
 5. THE BOND STRESS FOR DESIGN OF ANCHOR BOND LENGTH DEPENDS ON FACTORS SUCH AS INSTALLATION TECHNIQUE, GROUTING PROCEDURE, DIAMETER OF HOLE, ETC. FOR PRELIMINARY ESTIMATE, THE PRESUMPTIVE ULTIMATE BOND STRESS IS ON THE ORDER OF 4.5 KSF.
 6. ANCHORS SHALL BE CONSTRUCTED AND TESTED PER CALTRANS SPECIFICATION 46-02. AT LEAST 5% OF TOTAL NUMBER OF ANCHORS SHALL BE PERFORMANCE TESTED. THE REMAINING ANCHORS SHALL BE PROOF-TESTED.



65% SUBMITTAL
 JAN 16, 2020
 NOT FOR CONSTRUCTION

APPROVED DATE:	
NAME, CITY, ENGINEER	
HALF MOON BAY	
R.C.E. # 00000 / EXPIRES 00-00-0000	

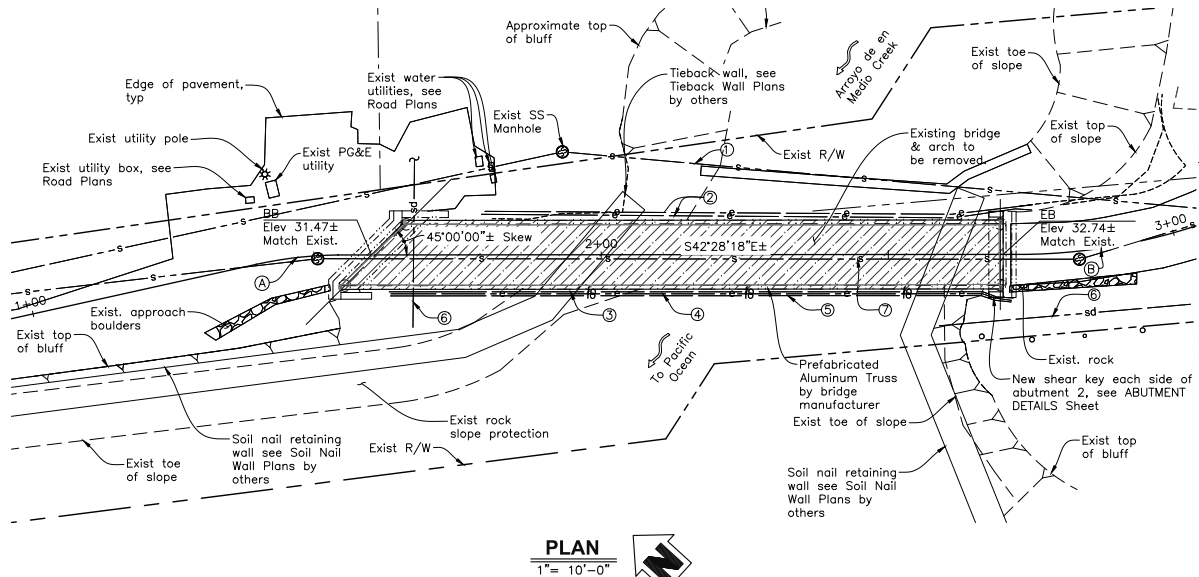
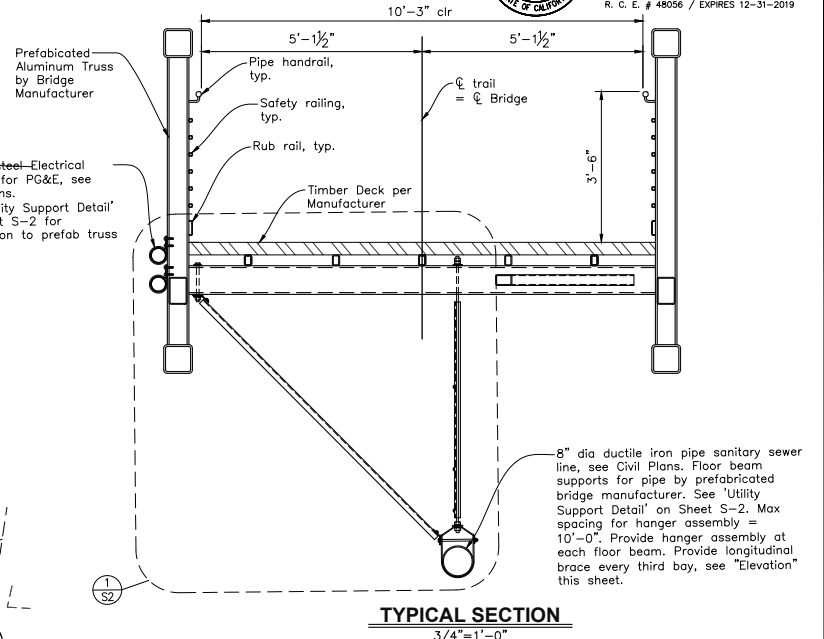
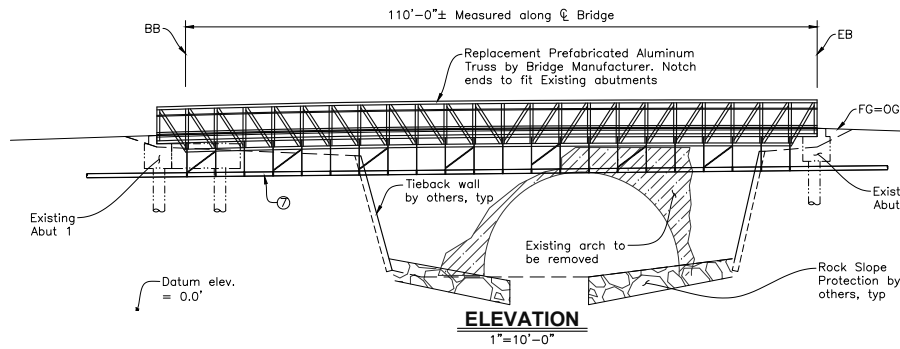
APPROVED DATE:	
2185 N. CALIFORNIA BLVD., SUITE 500 WALNUT CREEK, CA 94596 925-944-5411	
DILIP R. TRIVEDI	
MOFFATT & NICHOL	
R.C.E. # XXXXXX / EXPIRES XX-XX-XXXX	



DESIGNED BY: DAU	MIRADA ROAD BRIDGE AND BLUFF STABILIZATION	SCALE: AS SHOWN
CHECKED BY: JFZ	BLUFF STABILIZATION DETAIL 1 OF 2	DATE: 01/16/2020
DRAWN BY: PH		FILE NO: XXXXXX
REVISION	DATE	
JAMES C. PORTER, DIRECTOR OF PUBLIC WORKS SAN MATEO COUNTY		555 COUNTY CENTER, 5TH FLOOR REDWOOD CITY, CALIFORNIA 94063
FOR REDUCED PLANS ORIGINAL SCALE IS IN INCHES		C005 SHEET 10 OF 12



APPROVED: _____
 DATE: _____
 JAMES C. PORTER, DIRECTOR OF PUBLIC WORKS
 R. C. E. # 48056 / EXPIRES 12-31-2019



CALTRANS 2006 STANDARD PLANS

- A10A ACRONYMS & ABBREVIATIONS (SHEET 1 OF 2)
- A10B ACRONYMS & ABBREVIATIONS (SHEET 2 OF 2)
- A10C SYMBOLS (SHEET 1 OF 2)
- A10D SYMBOLS (SHEET 2 OF 2)

- Notes:**
- These plans shall incorporate the State of California, Department of Transportation, Standard Specifications and Standard Plans dated 2006, and the Project Special Provisions.
 - The contractor shall verify all controlling field dimensions before ordering or fabricating any material.
 - Bridge shall be made from Aluminum as specified by prefabricated bridge manufacturer.
 - Prefabricated truss bridge length shall be verified by the Contractor with in-place location of abutments.
 - Surveyor shall verify layout and elevation control.
 - Utility locations shown schematically. Contractor to verify all utilities with Civil Plans.

- Legend**
- Existing arch to be removed
 - Indicates new construction
 - Indicates existing bridge
 - ① Existing sewer pipe to be relocated
 - ② Existing 2'-4" ϕ electrical conduits (galv.) intended for future use to be relocated (PG&E).
 - ③ Existing 4" ϕ conduit (galv.) to be relocated (AT&T).
 - ④ Existing 2" ϕ electrical conduit (galv.) to be relocated.
 - ⑤ Existing 2" ϕ conduit (galv.) to be relocated (Pacbell).
 - ⑥ Existing storm drain to remain.
 - ⑦ 8" ϕ sewer line, see Civil Plans

INDEX TO BRIDGE PLANS

SHEET No.	TITLE
S-1	GENERAL PLAN
S-2	ABUTMENT DETAILS

- Indicates section letter
- Indicates sheet no. shown on
- Indicates detail no.
- Indicates sheet no. shown on

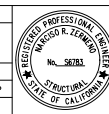
CURVE DATA			
CURVE	R	Δ	L
(A)	68.58'	18°47'06"	14.36'
(B)	38.37'	11°42'46"	100.00'

Verify Curve Data with Civil Plans

65% SUBMITTAL
 JAN 16 2020
 NOT FOR CONSTRUCTION

APPROVED DATE:	
NAME, CITY, ENGINEER	NARCISO R. ZERMENO, S.E.
HALF MOON BAY	CORNERSTONE STRUCTURAL ENGINEERING GROUP
R.C.E. # 00000 / EXPIRES 00-00-0000	R.S.E. # S6783 / EXPIRES 3-31-2020

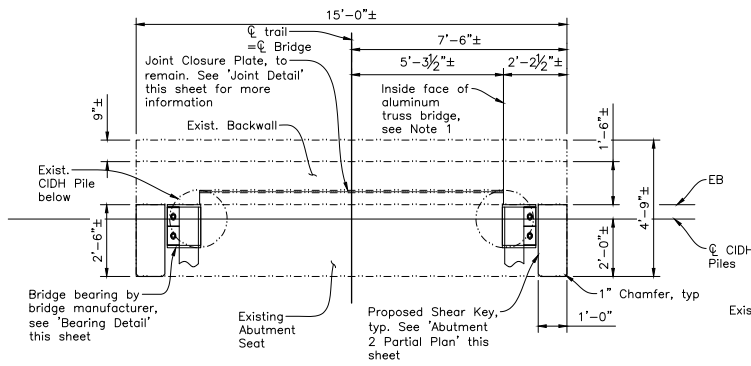
APPROVED DATE:	
NAME, CITY, ENGINEER	NARCISO R. ZERMENO, S.E.
HALF MOON BAY	CORNERSTONE STRUCTURAL ENGINEERING GROUP
R.C.E. # 00000 / EXPIRES 00-00-0000	R.S.E. # S6783 / EXPIRES 3-31-2020



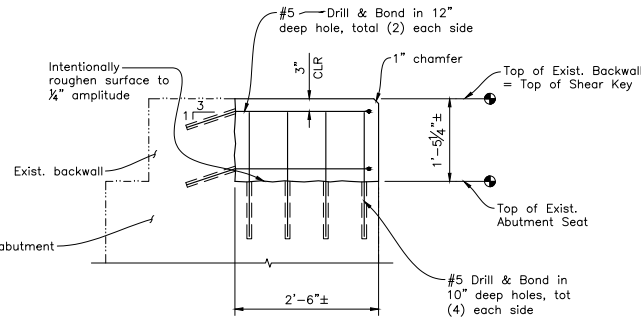
DESIGNED BY: NRZ	CHECKED BY: -	DRAWN BY: TLW	REVISION	DATE	JAMES C. PORTER, DIRECTOR OF PUBLIC WORKS SAN MATEO COUNTY	555 COUNTY CENTER, 5TH FLOOR REDWOOD CITY, CALIFORNIA 94063	SCALE: AS SHOWN DATE: 01/16/2020 FILE NO.: 4122700
FOR REDUCED PLANS ORIGINAL SCALE IS IN INCHES						0 1 2 3 4	S1
							SHEET 11 OF 12



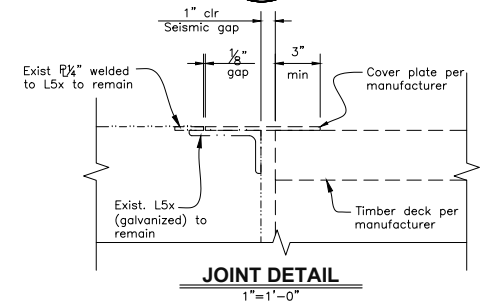
APPROVED: _____
 DATE: _____
 JAMES C. PORTER, DIRECTOR OF PUBLIC WORKS
 R. C. E. # 48056 / EXPIRES 12-31-2019



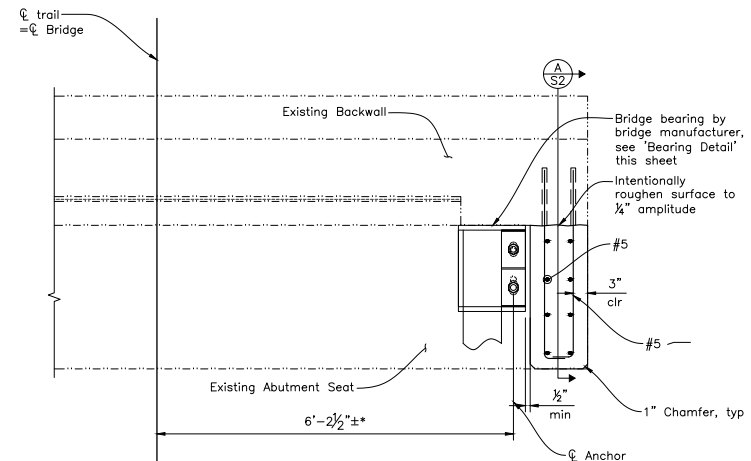
ABUTMENT 2 PLAN
 1/2"=1'-0"



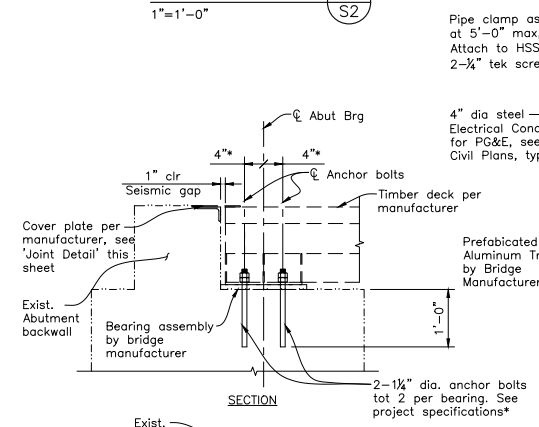
SECTION
 1"=1'-0" (A S2)



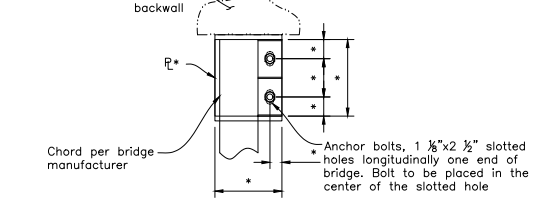
JOINT DETAIL
 1"=1'-0"



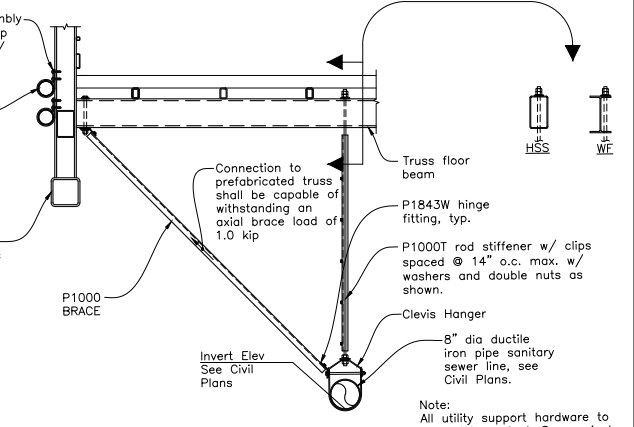
ABUTMENT 2 PARTIAL PLAN
 1"=1'-0"



SECTION
 1"=1'-0"



BEARING DETAIL
 1"=1'-0"



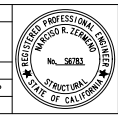
UTILITY SUPPORT DETAIL
 1/4"=1'-0" (1 S2)

* Verify with bridge manufacturer (applies to all details)

- Notes:**
- Contractor to confirm all existing dimensions prior to any installation or construction.
 - Verify all Aluminum Truss Bridge dimensions with the bridge manufacturer.
 - Existing abutment reinforcement not shown for clarity.
 - Contractor to confirm layout of shear key based on prefabricated bridge dimensions prior to placing shear keys.

APPROVED DATE:	
NAME, CITY ENGINEER	
HALF MOON BAY	
R.C.E. # 00000 / EXPIRES 00-00-0000	

APPROVED DATE:	
NARCISO R. ZERMENO, S.E.	
CORNERSTONE STRUCTURAL ENGINEERING GROUP	
R.S.E. # S6783 / EXPIRES 3-31-2020	



DESIGNED BY: NRZ	DATE: 01/16/2020	SCALE: AS SHOWN
CHECKED BY: -	FILE NO.: 4122700	
DRAWN BY: TLW		
ABUTMENT DETAILS MIRADA ROAD		555 COUNTY CENTER, 5TH FLOOR REDWOOD CITY, CALIFORNIA 94063
REVISION	DATE	
JAMES C. PORTER, DIRECTOR OF PUBLIC WORKS SAN MATEO COUNTY		
FOR REDUCED PLANS ORIGINAL SCALE IS IN INCHES		S2 SHEET 12 OF 12