



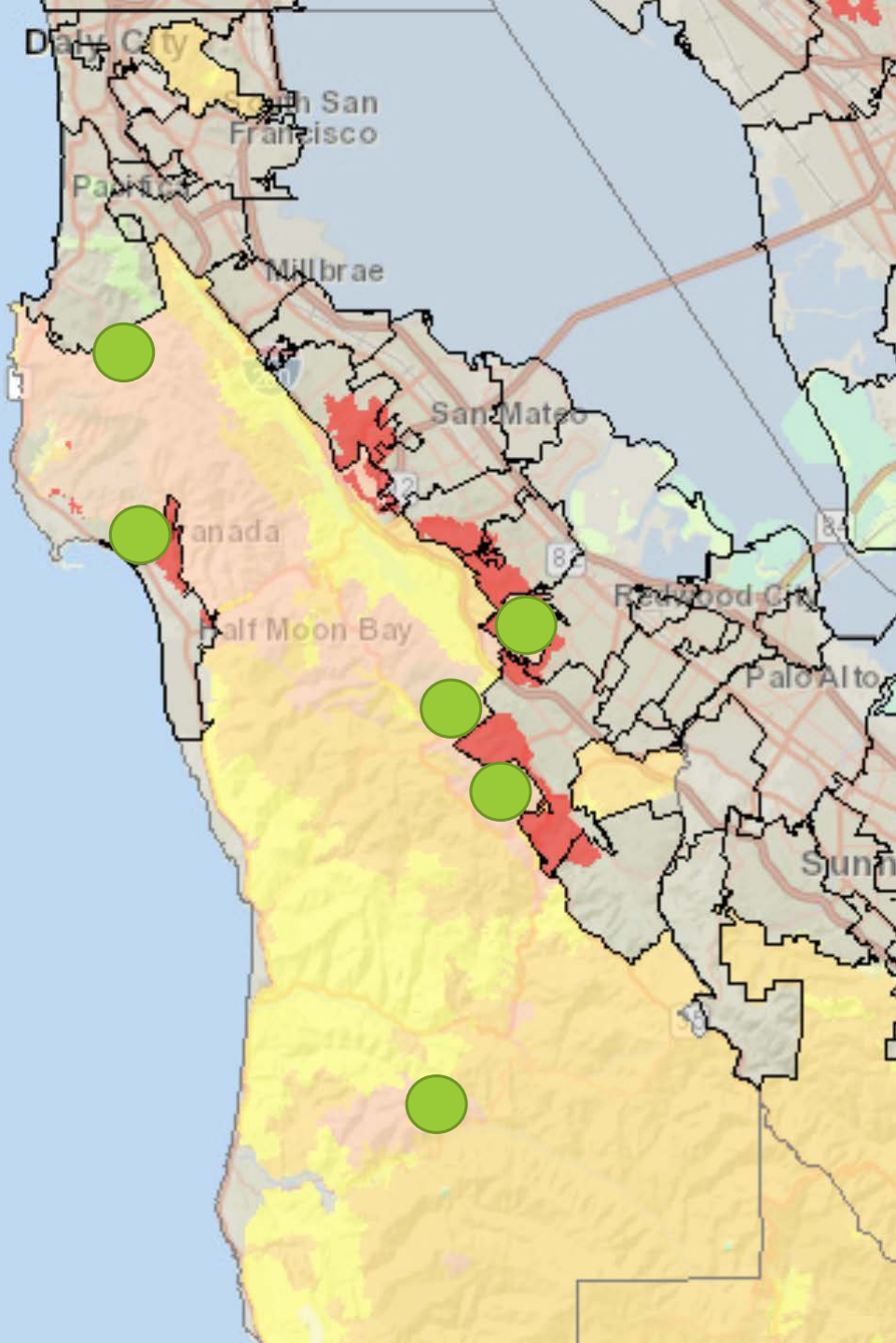


1934



2010





FHSZ in LRA



VHF FHSZ

FHSZ in SRA



Very High



High





Moderate

SRA

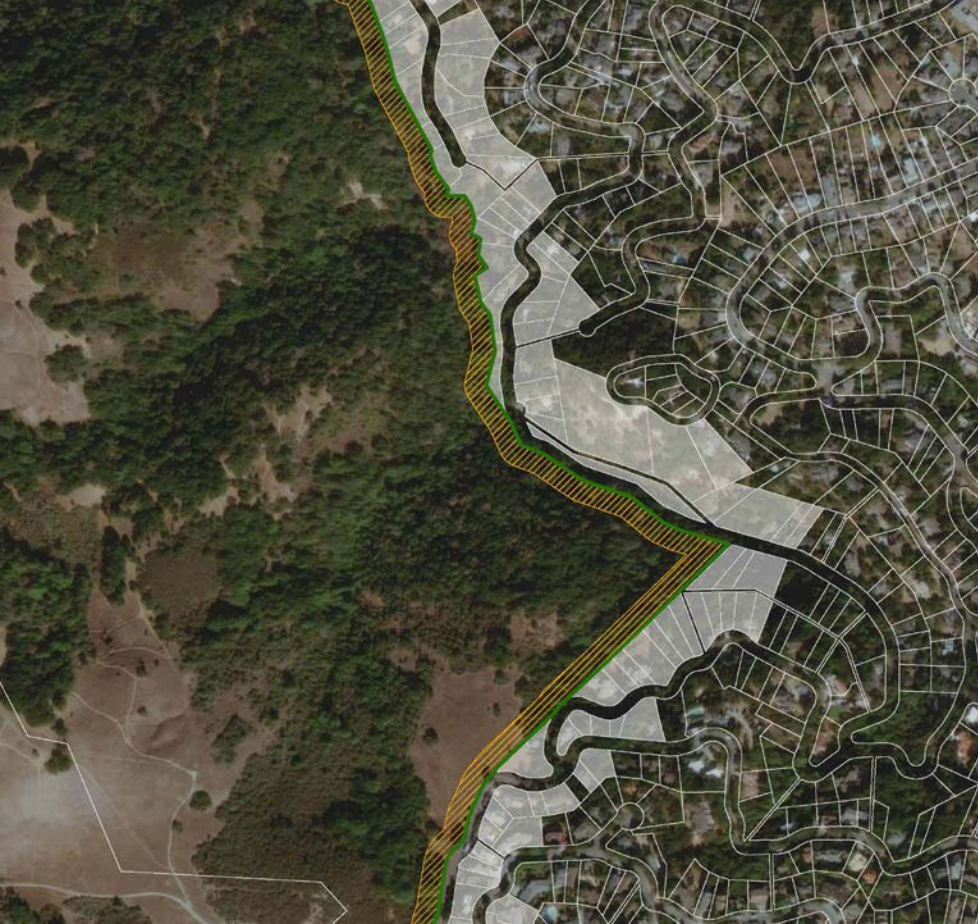


PROGRAM GOALS

1. Planning and Budgeting Tool
 2. Identify, Evaluate, and Prioritize Projects Based on Data and Best Practices
 3. Monitor Projects to Adapt Maintenance Strategies
 4. Balance Fuel Reduction and Restoration/Preservation
- 
- 

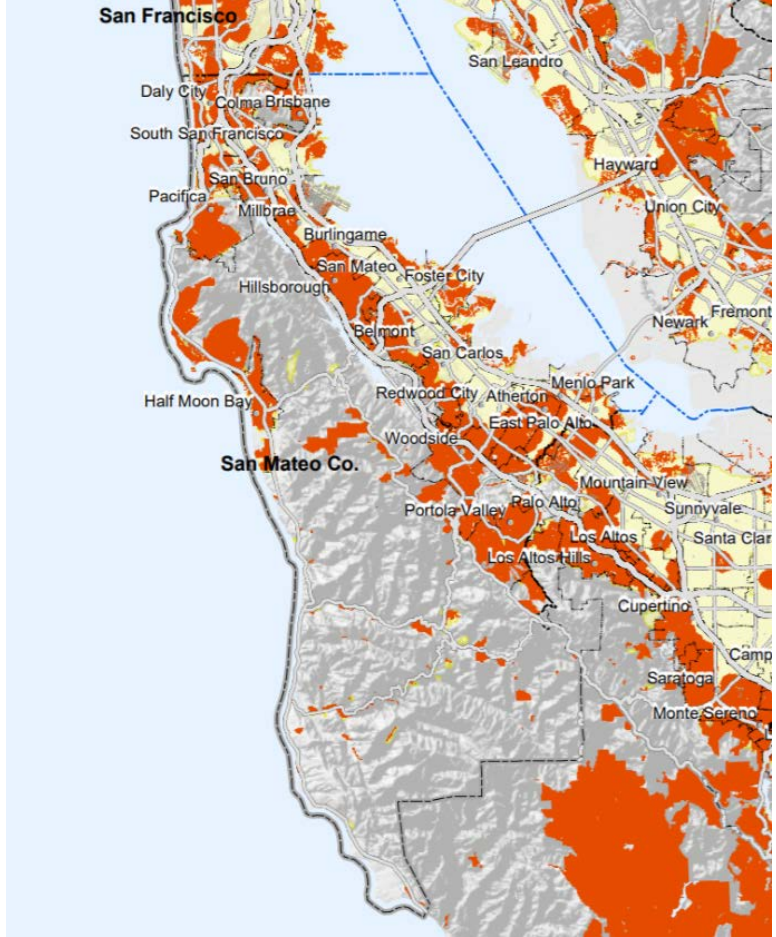
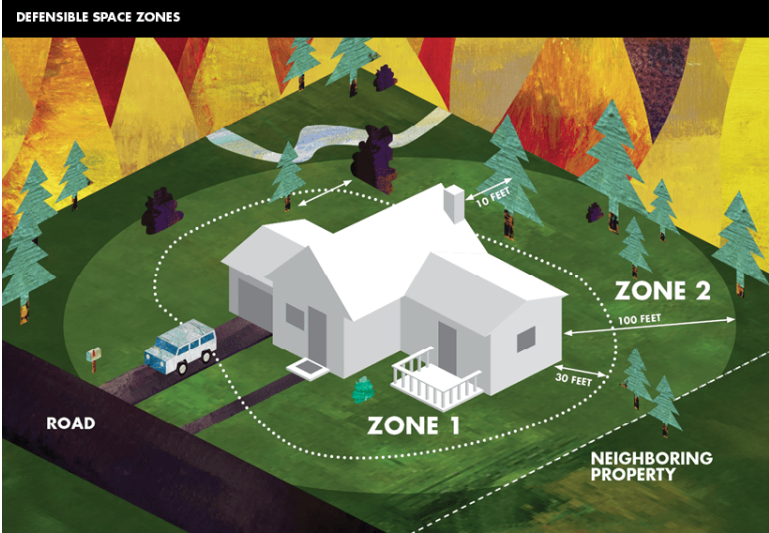
Criteria

Criteria 1	Presence of Private Residences
Criteria 2	Presence of Park Building
Criteria 3	Wildland Urban Interface
Criteria 4	Fuel Type
Criteria 5	Vegetation Treatment Considerations
Criteria 6	Ecological Considerations
Criteria 7	Ingress/ Egress
Criteria 8	Fire Severity Zones
Criteria 9	Longevity
Criteria 10	Professional Judgement
Criteria 11	Joint Implementation
Criteria 12	Size of Project
Criteria 13	Funding and Capacity
Criteria 14	Permitting and Approvals

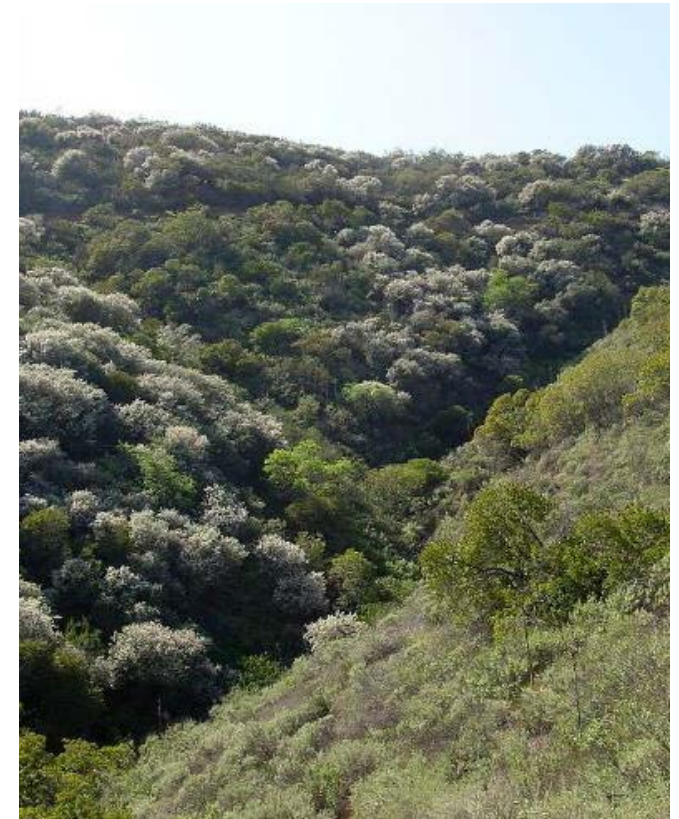


CRITERIA 1: PRESENCE OF PRIVATE RESIDENCES

CRITERIA 3: WILDLAND URBAN INTERFACE



CRITERIA 4: FUEL TYPE

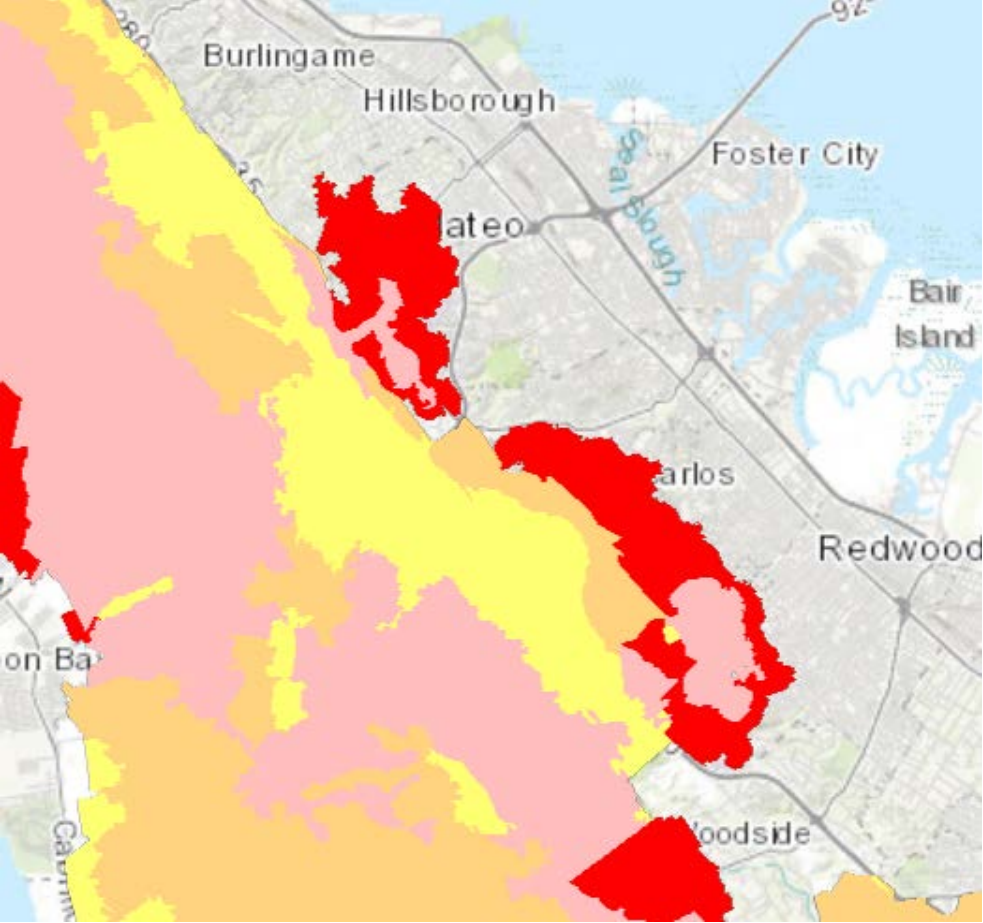




CRITERIA 5: VEGETATION TREATMENT CONSIDERATIONS



CRITERIA 7: INGRESS/EGRESS |



CRITERIA 10: PROFESSIONAL JUDGEMENT

Rank ID	Project Name	Park Name	Cost
1	Maintenance of Fuel Breaks and Fire Roads in Wunderlich Park	Wunderlich County Park	\$ 625,600
2	Maintenance of Governor's Quarry Park Fuel Reduction Project	Quarry Park and Mirada East	\$ 170,000
3	Create and Maintain Shaded Fuel Breaks Along Pescadero Creek Road and Wurr Road	Memorial County Park	\$ 397,688
4	Create and Maintain a Shaded Fuel Break Along Crystal Springs Road Corridor - San Bruno	Junipero Serra County Park	\$ 141,400
5	Create and Maintain a Shaded Fuel Break Along Alta Vista Avenue and Crocker Avenue - Daly City	San Bruno Mountain State and County Park	\$ 584,500
6	Create and Maintain Shaded Fuel Break Along Park Boundary with Private Residences - San Bruno	Junipero Serra County Park	\$ 400,000
7	Create and Maintain Shaded Fuel Break along the Eastern and Southeastern Boundary	Edgewood County Park	\$ 491,300
8	Create and Maintain a Shaded Fuel Break Along Western Park Boundary	Quarry Park and Mirada East	\$ 125,750
9	Maintenance of Governor's King Mountain Road Fuel Reduction Project	Huddart County Park	\$ 362,338
10	Create and Maintain Defensible Space Along Park Boundary with Private Residences - Pacifica	San Pedro Valley	\$ 123,725
11	Create and Maintain a Shaded Fuel Break at the Crocker Street Entrance and Guadalupe Canyon Parkway - Daly City	San Bruno Mountain State and County Park	\$ 297,750
12	Treat and Maintain Cal FIRE CCI Forest Health Grant Project (Wunderlich)	Wunderlich County Park	\$ 1,641,678
13	Create and Maintain a Shaded Fuel Break Along the Southern Park Boundary	Edgewood County Park	\$ 70,700
14	Maintain Shaded Fuel Breaks and Fire Roads in Huddart Park	Huddart County Park	\$ 397,688
15	Create and Maintain a Fuel Break Along Park Boundary with Franciscan Park Community	San Bruno Mountain State and County Park	\$ 202,500
16	Create and Maintain a Shade Fuel Break Along Fire Roads in Quarry Park and Mirada East	Quarry Park and Mirada East	\$ 884,000
17	Wildfire Fuel and Hazard Tree Reduction Along Sawyer Camp Trail	Sawyer Camp Trail	\$ 389,500
18	Create and Maintain a Shaded Fuel Break Between Oak Cove Trail and Adjacent Private Residences - San Bruno	Junipero Serra County Park	\$ 39,769
19	Maintain Shaded Fuel Breaks Along Fire Roads in Memorial County Park	Memorial County Park	\$ 309,313
20	Removal of Gorse Along Saddle Loop Trail	San Bruno Mountain State and County Park	\$ 219,375
21	Treat and Maintain Cal FIRE CCI Forest Health Grant Project (Huddart)	Huddart County Park	\$ 1,641,678
22	Removal of Invasive Species Along Park Boundary with Pillar Ridge	Pillar Point Bluff	\$ 1,476,000
23	Remove Unhealthy Eucalyptus Trees from Iris Point Reservation Site	Junipero Serra County Park	\$ 111,375
24	Create and Maintain a Shaded Fuel Break Along Old Stage Road	Edgewood County Park	\$ 70,700
25	Create and Maintain Defensible Space Around Park Faciliteis and Infrastruce	Junipero Serra County Park	\$ 13,600
26	Create and Maintain Defensible Space Around Park Structures and Infrastrucrure in Huddart Park	Huddart County Park	\$ 222,750
27	Maintain Shaded Fuel Breaks Along Fire Roads Throughout Pescadero Creek County Park	Pescadero Creek County Park	\$ 1,687,963
28	Create and Maintain Defensible Space Around All Park Facilities and Infrastructure	All DIII Parks	\$ 883,750
29	Create and Maintain Fuel Breaks to Preserve First Responder Access	Sam McDonald County Park	\$ 1,051,663
30	Enhancement of First Responder Access on Old Stage Road and Sunset Trail	Edgewood County Park	\$ 21,750
31	Loop Fire Road Eucalytpus and Acacia Removal Project	Wunderlich County Park	\$ 277,500
32	Create and Maintain a Fuel Break Along Hazelnut Trail	San Pedro Valley	\$ 3,413,250
		Total	\$ 18,746,551

BEFORE



Removing brush strategically across the landscape interrupts fuel continuity which helps slow an advancing wildfire, allowing firefighters a safe place to defend nearby communities and protect natural resources.



AFTER

BEFORE



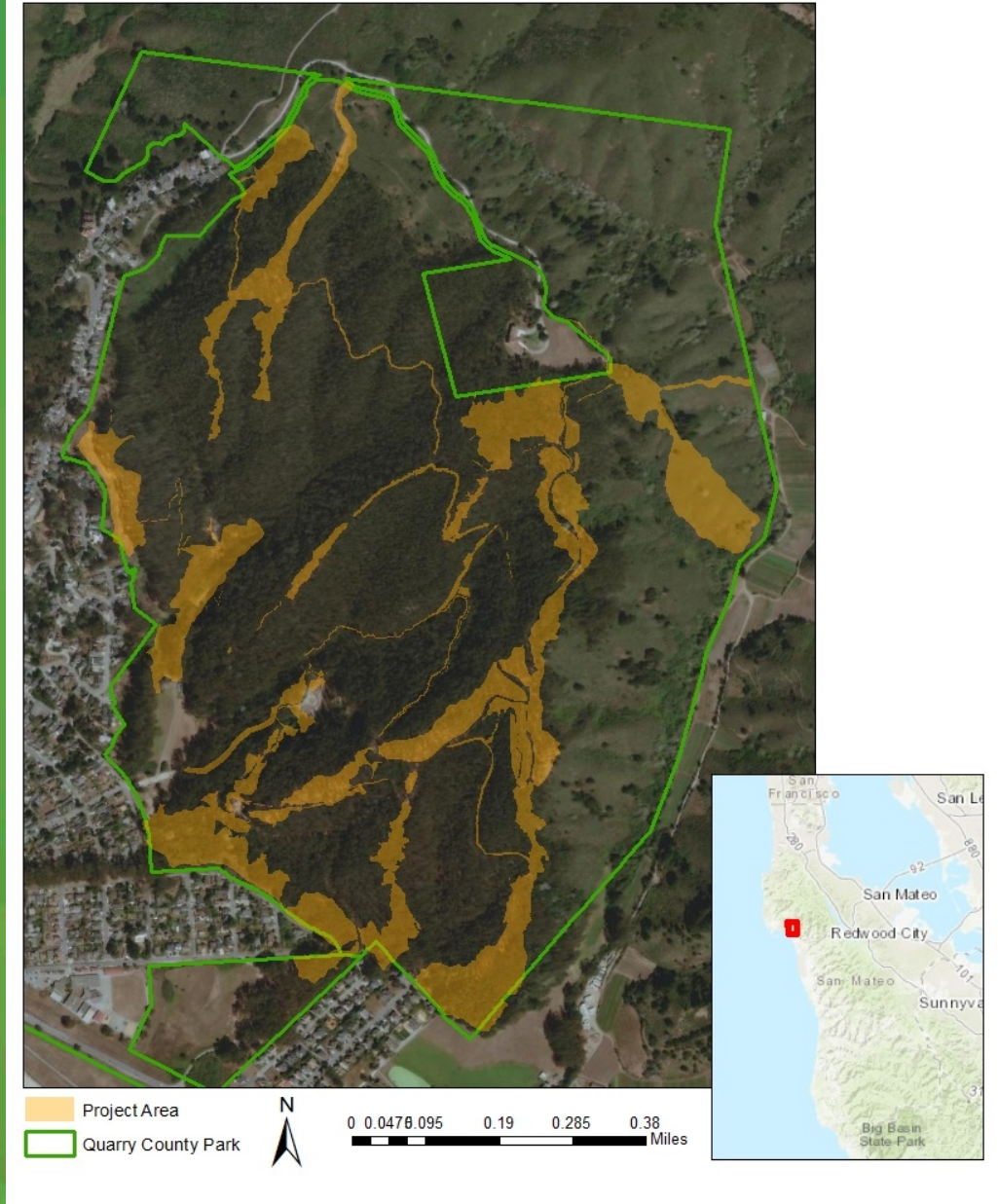
Shaded fuel breaks along roadways remove heavy fuels and are designed to prevent roadside sparks from becoming a devastating wildfire. They also create safer ingress and egress routes for emergency personnel and residents.



AFTER

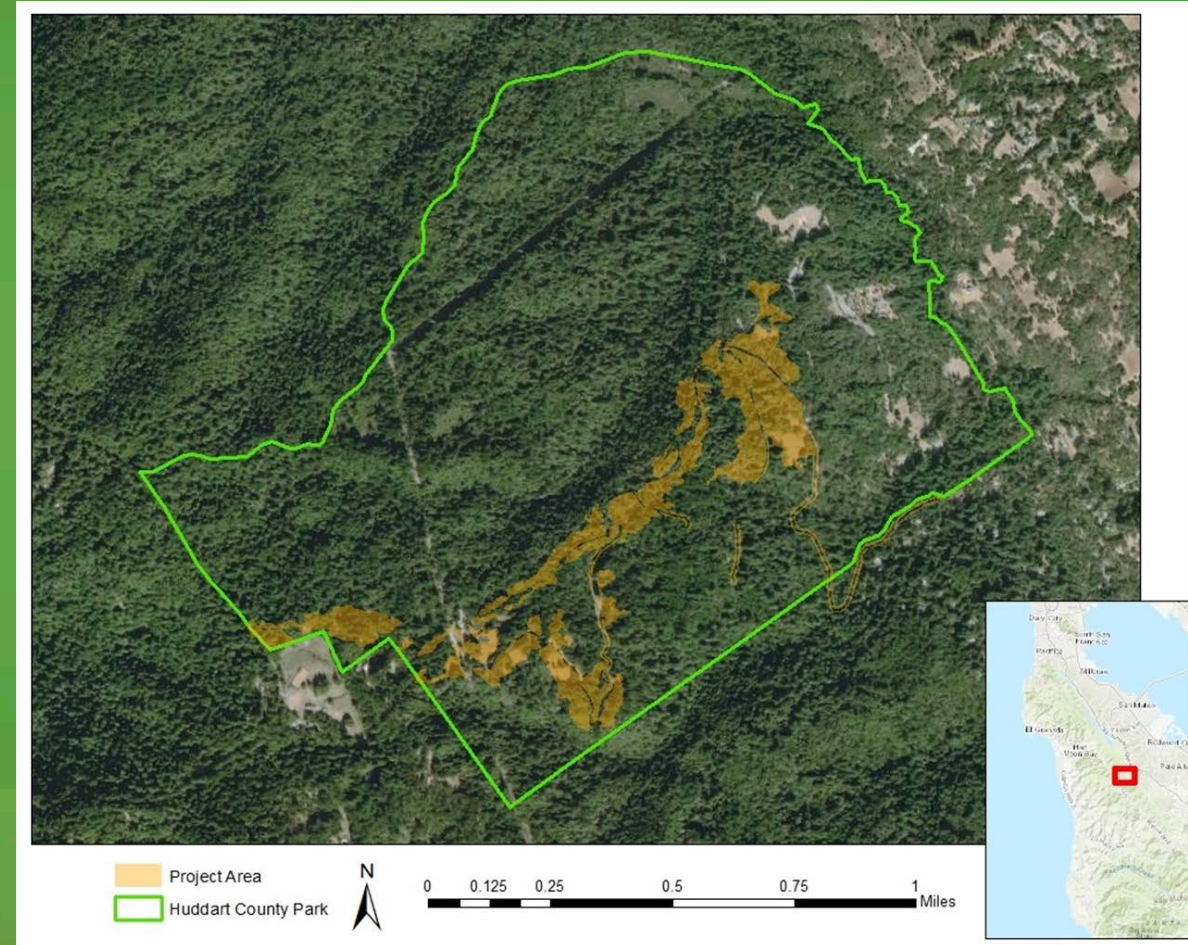
#2 – MAINTENANCE OF GOVERNOR'S QUARRY PARK FUEL REDUCTION PROJECT

- Treatment Area: ~83 Acres
- Est. 5-Year Cost: \$170,000
- Year 1: ~65 Acres; \$85,000
- Responsible Party: Department/Contractor



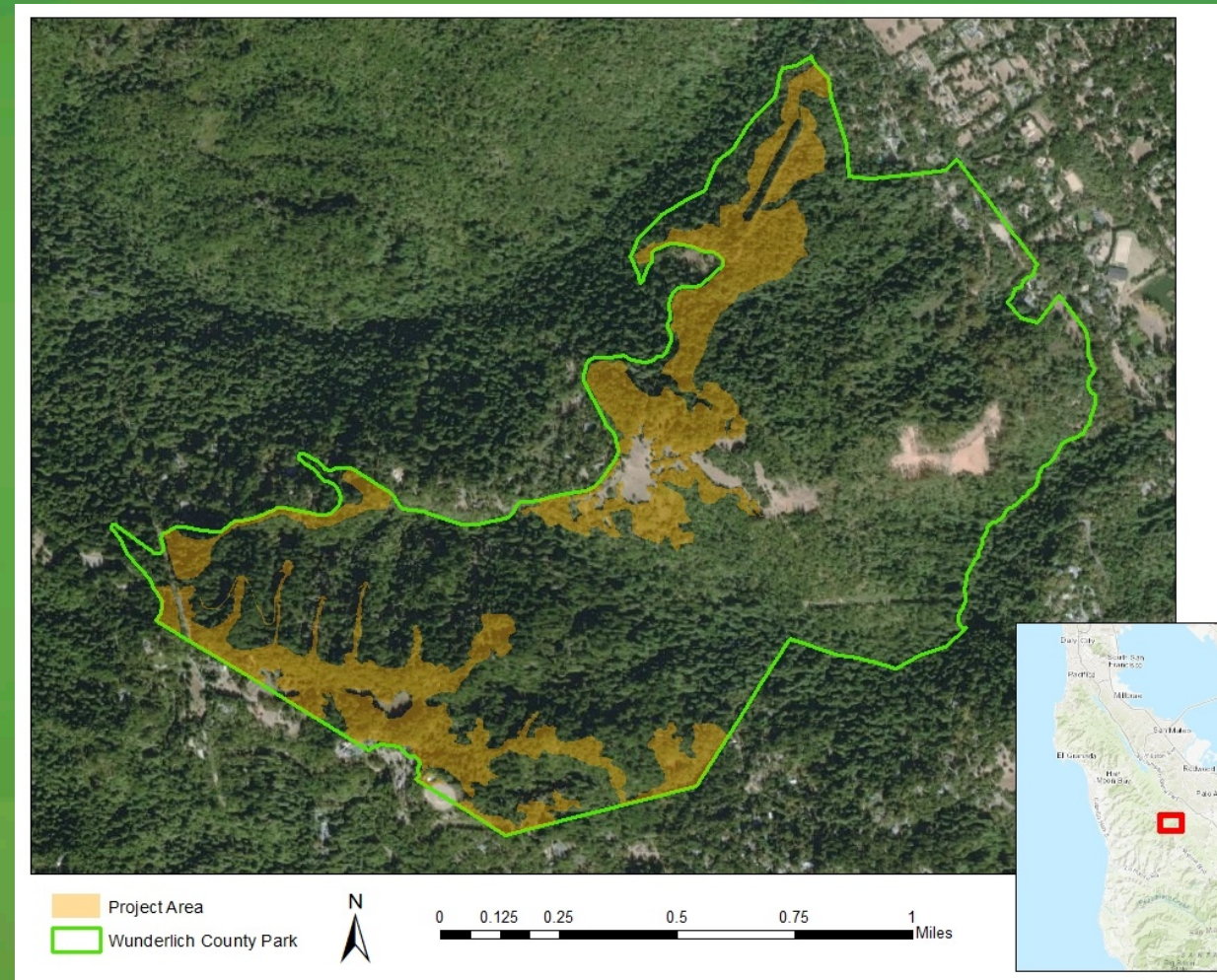
#9 – MAINTENANCE OF GOVERNOR'S KINGS MOUNTAIN ROAD FUEL REDUCTION PROJECT

- Treatment Area: ~82 Acres
- Est. 5-Year Cost: \$362,338
- Year 1: ~15 Acres
- Responsible Party: Department



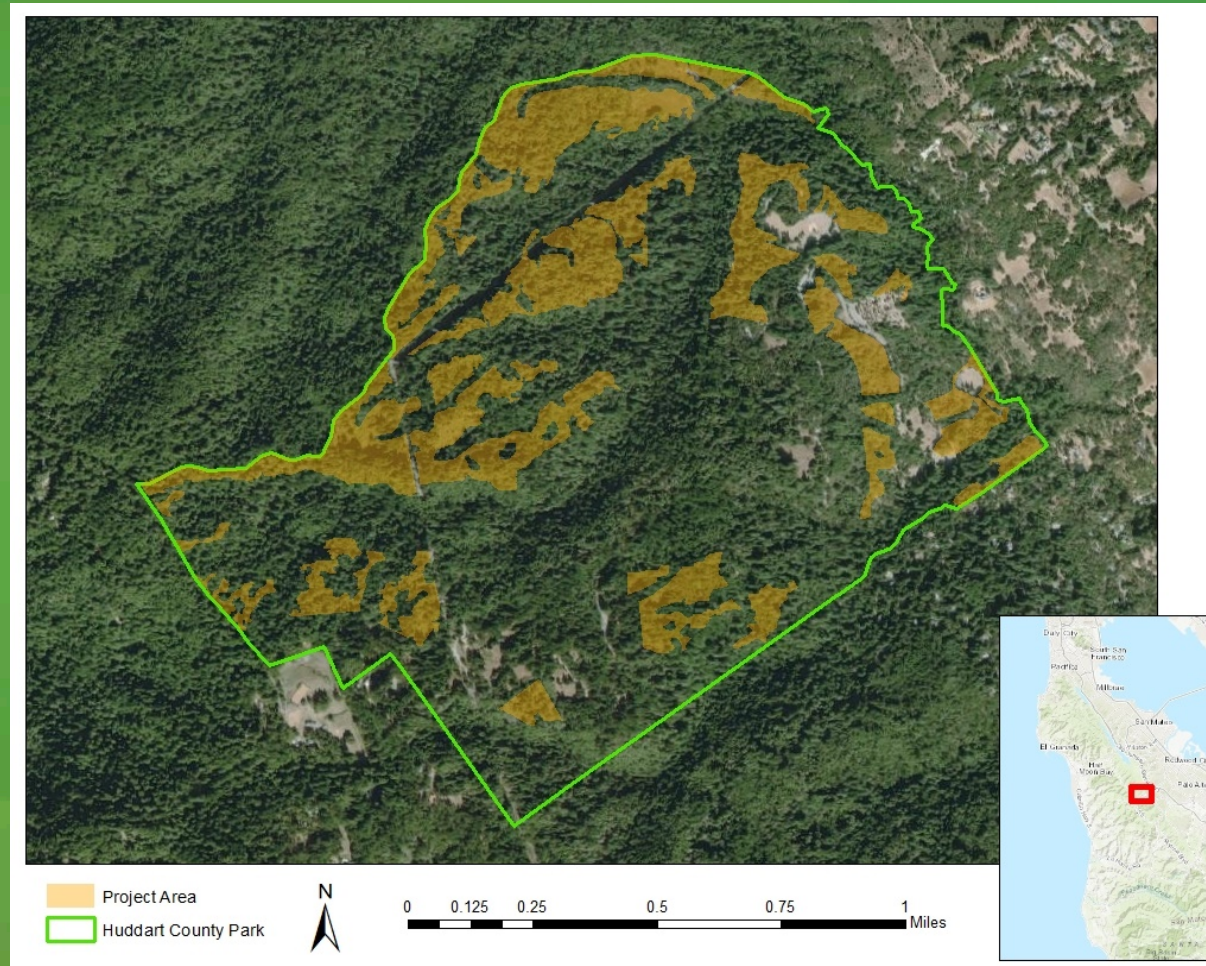
#12 – TREAT AND MAINTAIN CAL FIRE CCI FOREST HEALTH GRANT PROJECT (WUNDERLICH)

- Treatment Area: ~207 Acres
- Est. 5-Year Cost: \$1,641,678
- Year 1: ~70 Acres; \$547,226
- Responsible Party: Contractor



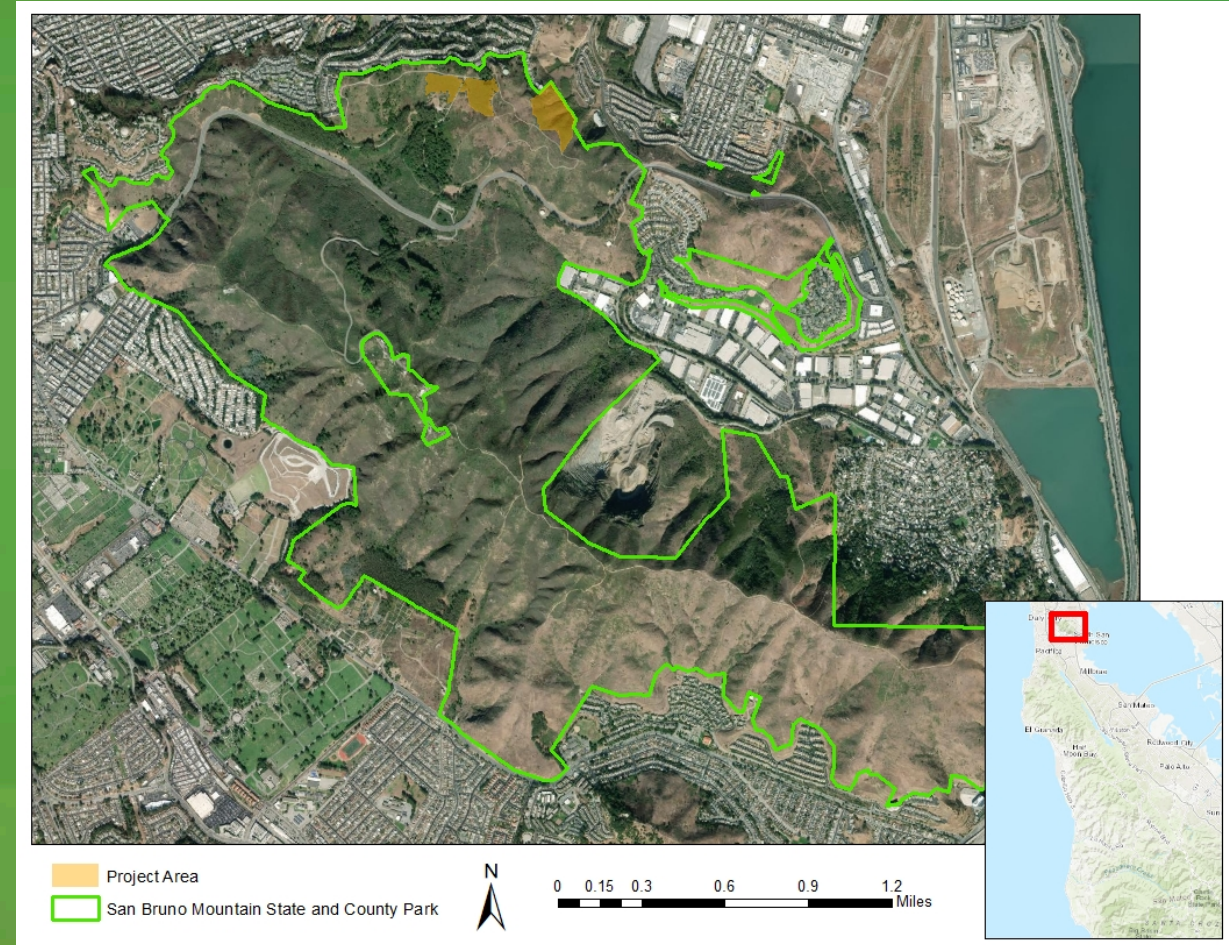
#21 – TREAT AND MAINTAIN CAL FIRE CCI FOREST HEALTH GRANT PROJECT (HUDDART)

- Treatment Area: ~207 Acres
- Est. 5-Year Cost: \$1,641,678
- Year 1: ~70 Acres; \$547,226
- Responsible Party: Contractor



#20 – REMOVAL OF GORSE ALONG SADDLE LOOP TRAIL

- Treatment Area: ~26 Acres
- Est. 5-Year Cost: \$219,375
- Year 1: ~13 Acres; \$20,000
- Responsible Party: Department/Contractor



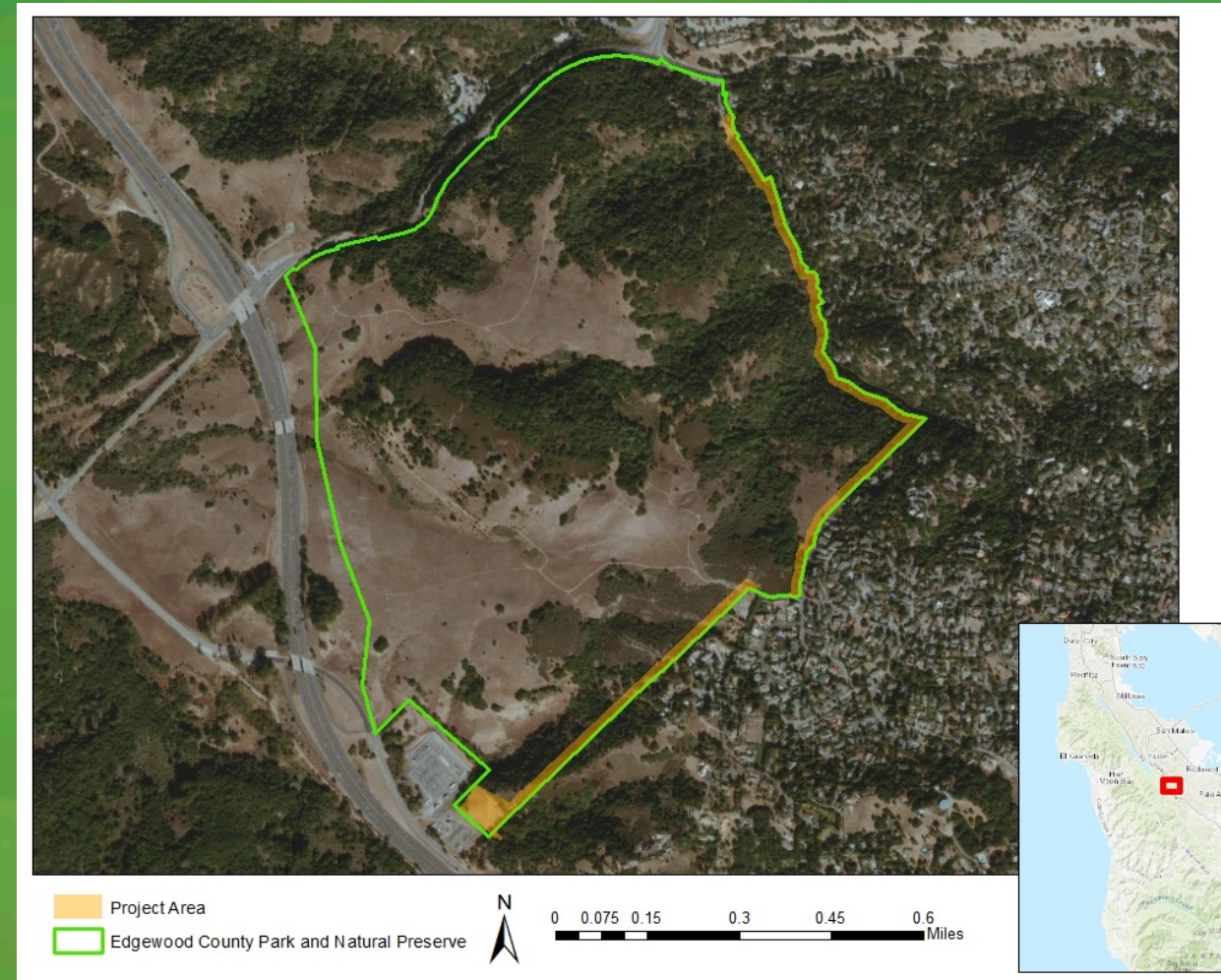
#6 – CREATE AND MAINTAIN SHADED FUEL BREAK ALONG PARK BOUNDARY WITH PRIVATE RESIDENCES - SAN BRUNO

- Treatment Area: ~7 Acres
- Est. 5-Year Cost: \$400,000
- Year 1: ~7 Acres; \$264,000
- Responsible Party: Department/Contractor



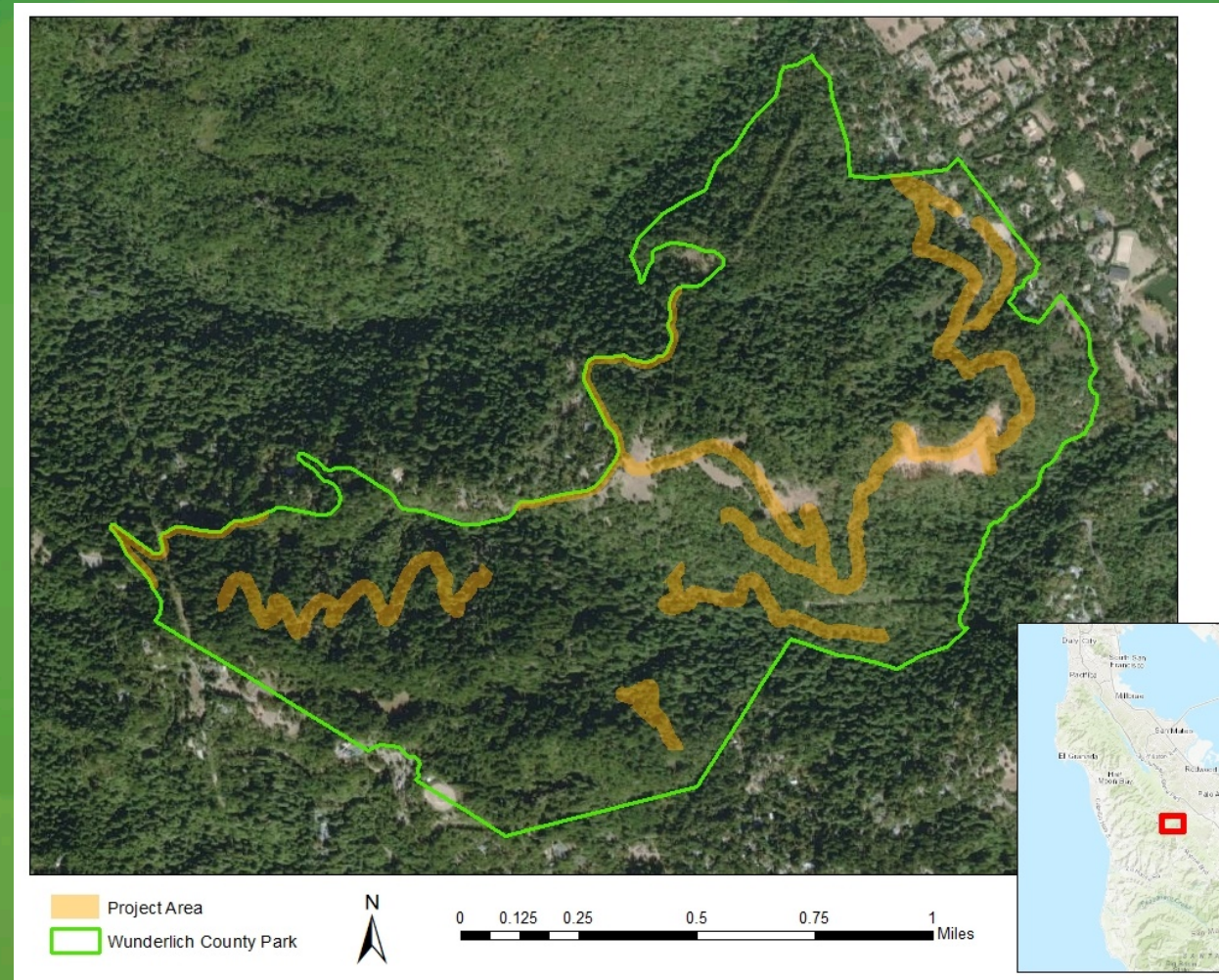
#7 – CREATE AND MAINTAIN SHADED FUEL BREAK ALONG THE EASTERN AND SOUTHEASTERN BOUNDARY

- Treatment Area: ~10 Acres
- Est. 5-Year Cost: \$491,300
- Year 1: ~10 Acres; \$324,258
- Responsible Party: Contractor



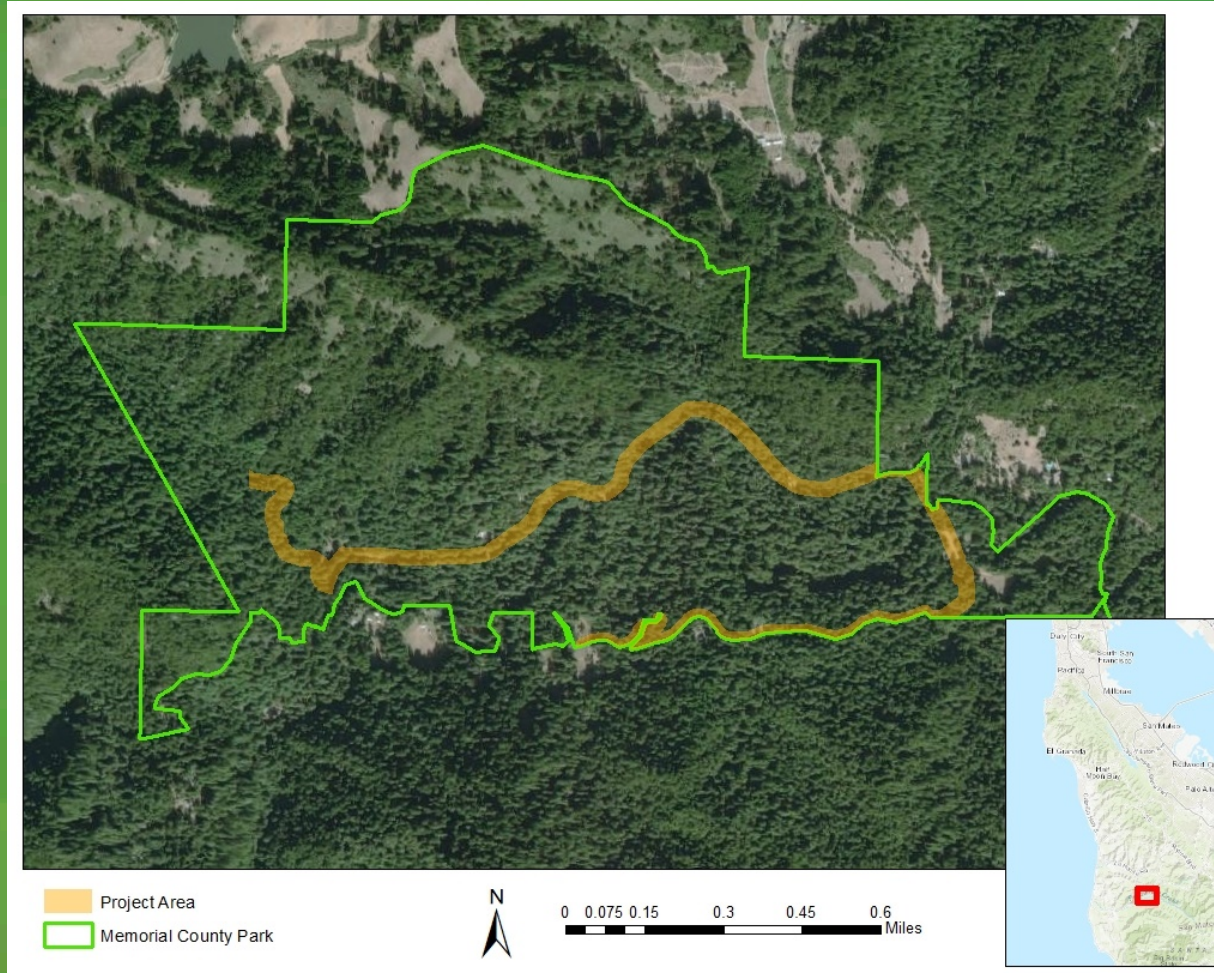
#1 – MAINTENANCE OF FUEL BREAKS AND FIRE ROADS IN WUNDERLICH PARK

- Treatment Area: ~92 Acres
- Est. 5-Year Cost: \$625,600
- Year 1: ~28 Acres
- Responsible Party: Department



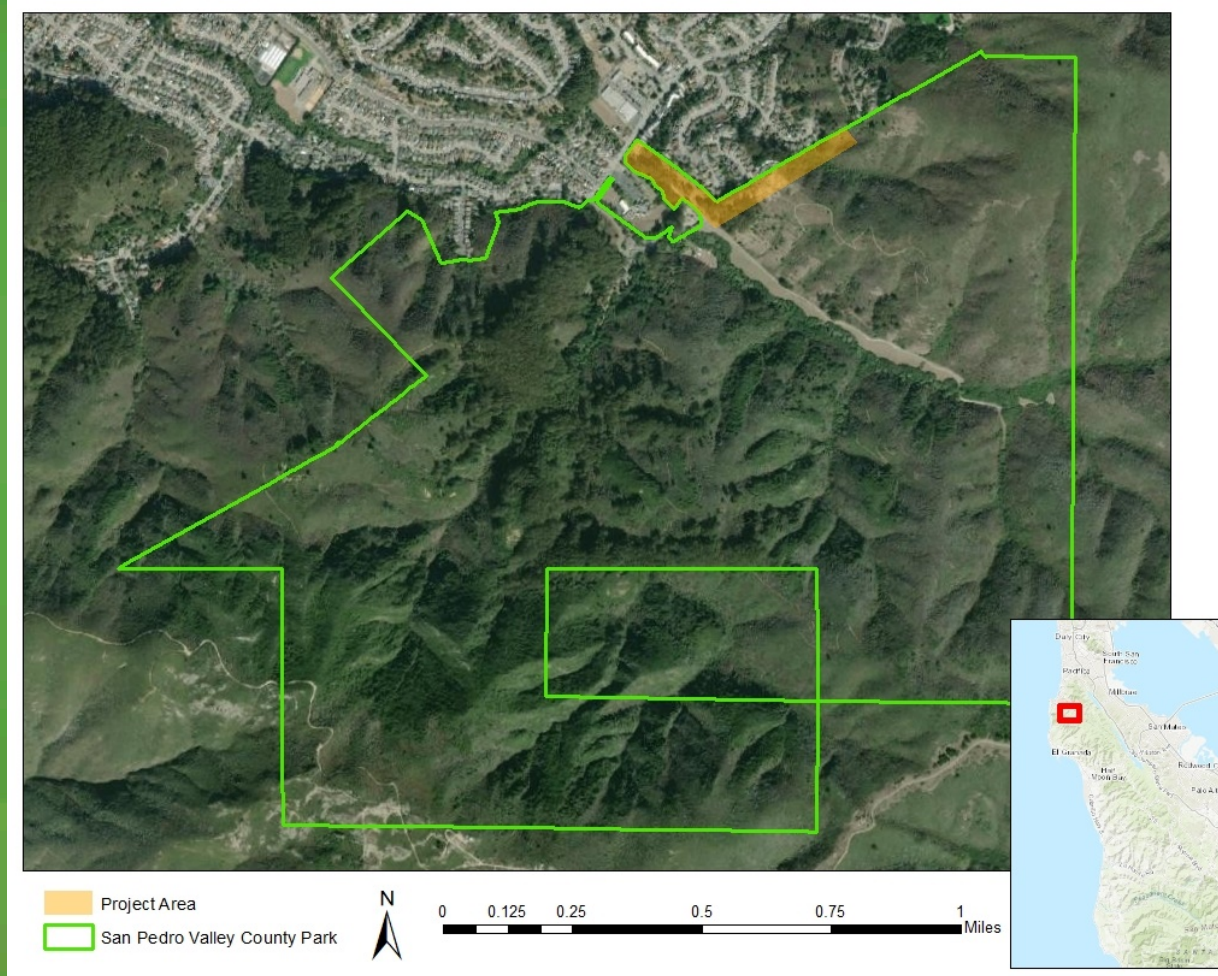
#3 – CREATE AND MAINTAIN SHADED FUEL BREAKS ALONG PESCADERO CREEK ROAD AND WURR ROAD

- Treatment Area: ~45 Acres
- Est. 5-Year Cost: \$397,688
- Year 1: ~30 Acres; \$262,474
- Responsible Party: Department/Contractor



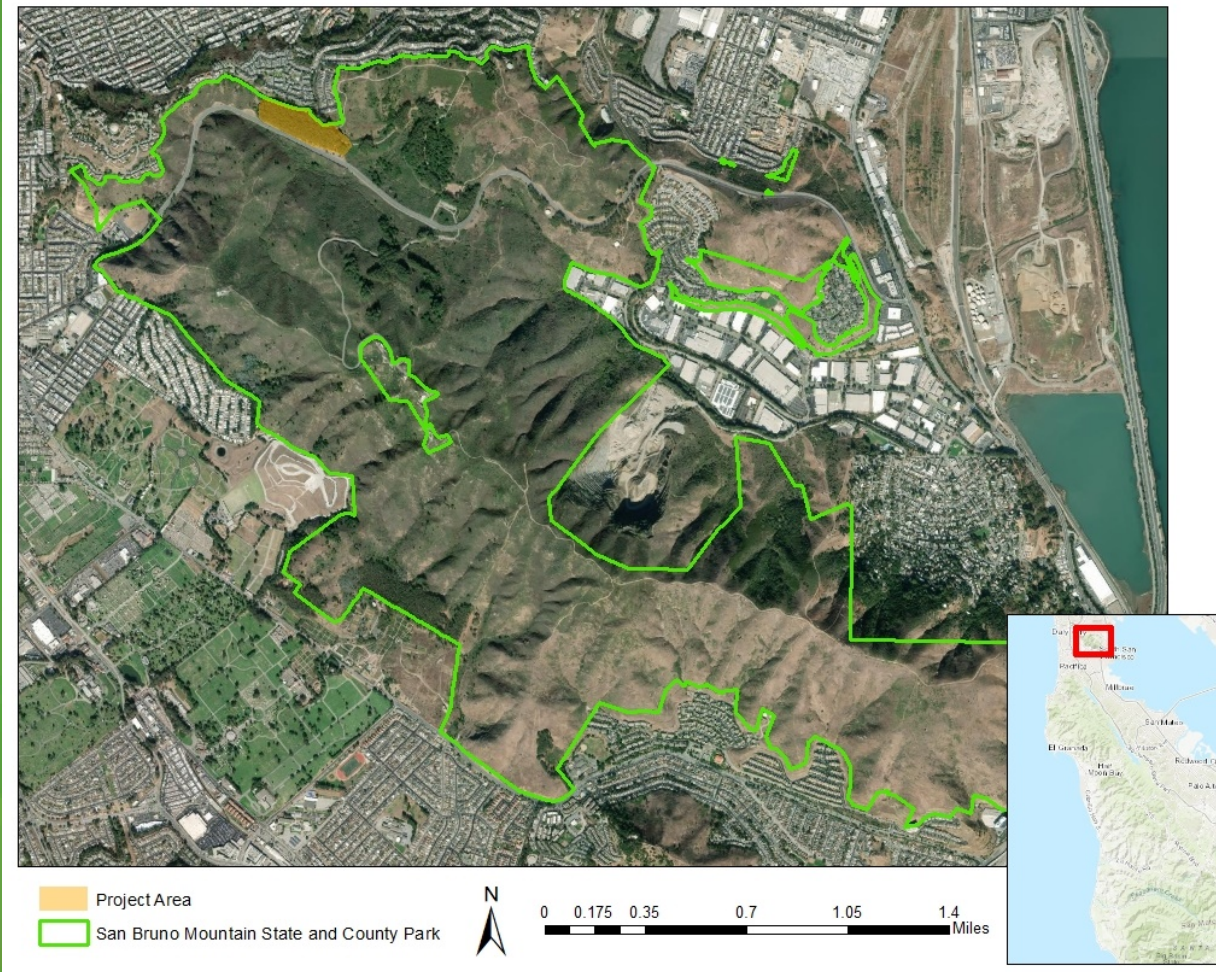
#10 – CREATE AND MAINTAIN DEFENSIBLE SPACE ALONG PARK BOUNDARY WITH PRIVATE RESIDENCES - PACIFICA

- Treatment Area: ~14 Acres
- Est. 5-Year Cost: \$123,725
- Year 1: ~14 Acres; \$5,000
- Responsible Party: Department



#11 – CREATE AND MAINTAIN A SHADED FUEL BREAK AT THE CROCKER STREET ENTRANCE AND GUADALUPE CANYON PARKWAY - DALY CITY

- Treatment Area: ~18 Acres
- Est. 5-Year Cost: \$297,750
- Year 1: ~10 Acres; \$100,000
- Responsible Party: Department/Contractor



Questions?

