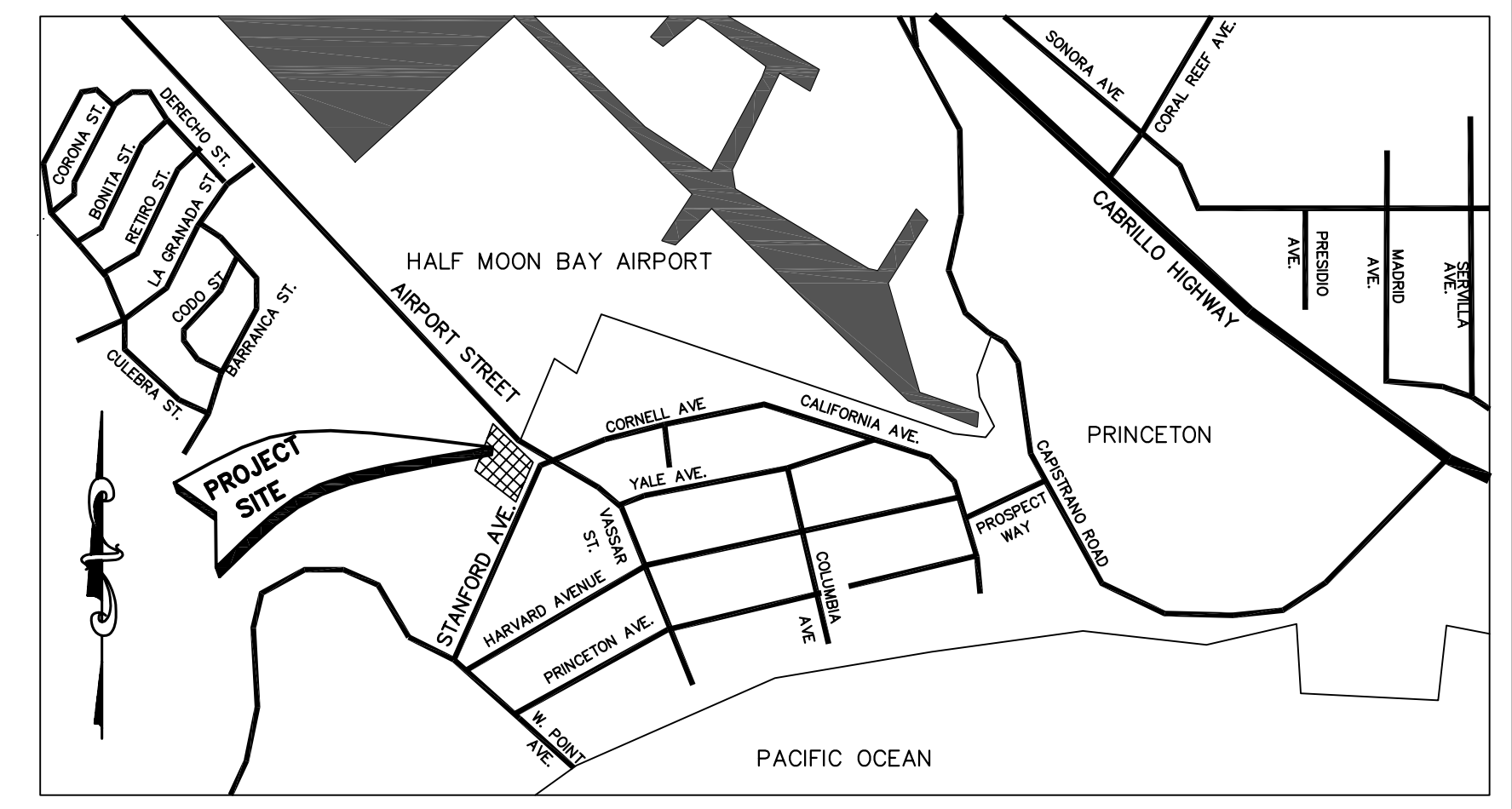


# Big Wave Final EIR

## Zoning Map

Figure A



**LOCATION MAP**  
SCALE: NOT TO SCALE

**RECORD OWNER AND SUBDIVIDER:**

BIG WAVE LLC  
P.O. BOX 700  
BELMONT CA. 94002

**LAND SURVEYOR AND CIVIL ENGINEER:**

MacLEOD & ASSOCIATES  
965 CENTER STREET  
SAN CARLOS, CA 94070  
(650) 593-8580

**ASSESSOR'S PARCEL NUMBER:**

047-312-040

**EXISTING ZONING:**

W/DR - LIGHT INDUSTRIAL WITH DESIGN REVIEW

**UTILITIES:**

GAS AND ELECTRICITY:	PACIFIC GAS AND ELECTRIC COMPANY
SANITARY SEWER:	GRANADA SANITARY DISTRICT
WATER:	COASTSIDE WATER DISTRICT
TELEPHONE:	A.T. & T.
FIRE PROTECTION:	HALF MOON BAY

**FLOOD ZONE:**

" C "

**UTILITY NOTE:**

THE UTILITIES EXISTING ON THE SURFACE AND SHOWN ON THIS DRAWING HAVE BEEN LOCATED BY FIELD SURVEY. ALL UNDERGROUND UTILITIES SHOWN ON THIS DRAWING ARE FROM RECORDS OF THE VARIOUS UTILITY COMPANIES AND THE SURVEYOR/ENGINEER DOES NOT ASSUME RESPONSIBILITY FOR THEIR COMPLETENESS, INDICATED LOCATION, OR SIZE. RECORD UTILITY LOCATION SHOULD BE CONFIRMED BY EXPOSING THE UTILITY.

**LEGEND:**

CB	CATCH BASIN
FF	FINISHED FLOOR ELEVATION
FP	FINISHED PAVEMENT
FL	FLOWLINE
TC	TOP OF CURB
TG	TOP OF GRATE
SDMH	STORM DRAIN MANHOLE
SSMH	SANITARY SEWER MANHOLE
INV.	INVERT
H.P.	HIGH POINT
G.B.	GRADE BREAK
JP	JOINT POLE
E.P.	EDGE OF PAVEMENT
SS	NEW SANITARY SEWER LINE
SD	NEW STORM DRAIN LINE
G	GAS LINE
E	ELECTRIC LINE
W	WATER LINE
15	NEW CONTOUR LINE
WW	WELL WATER
RW	RECYCLED WATER
PVJT	PRIVATE JOINT TRENCH
PJT	PUBLIC JOINT TRENCH
RWD	RAINWATER DRAIN FOR ROOF RUNOFF

**PARKING NOTE:**

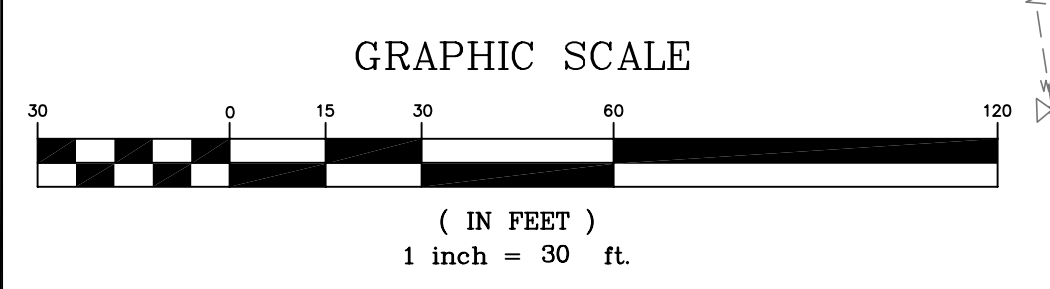
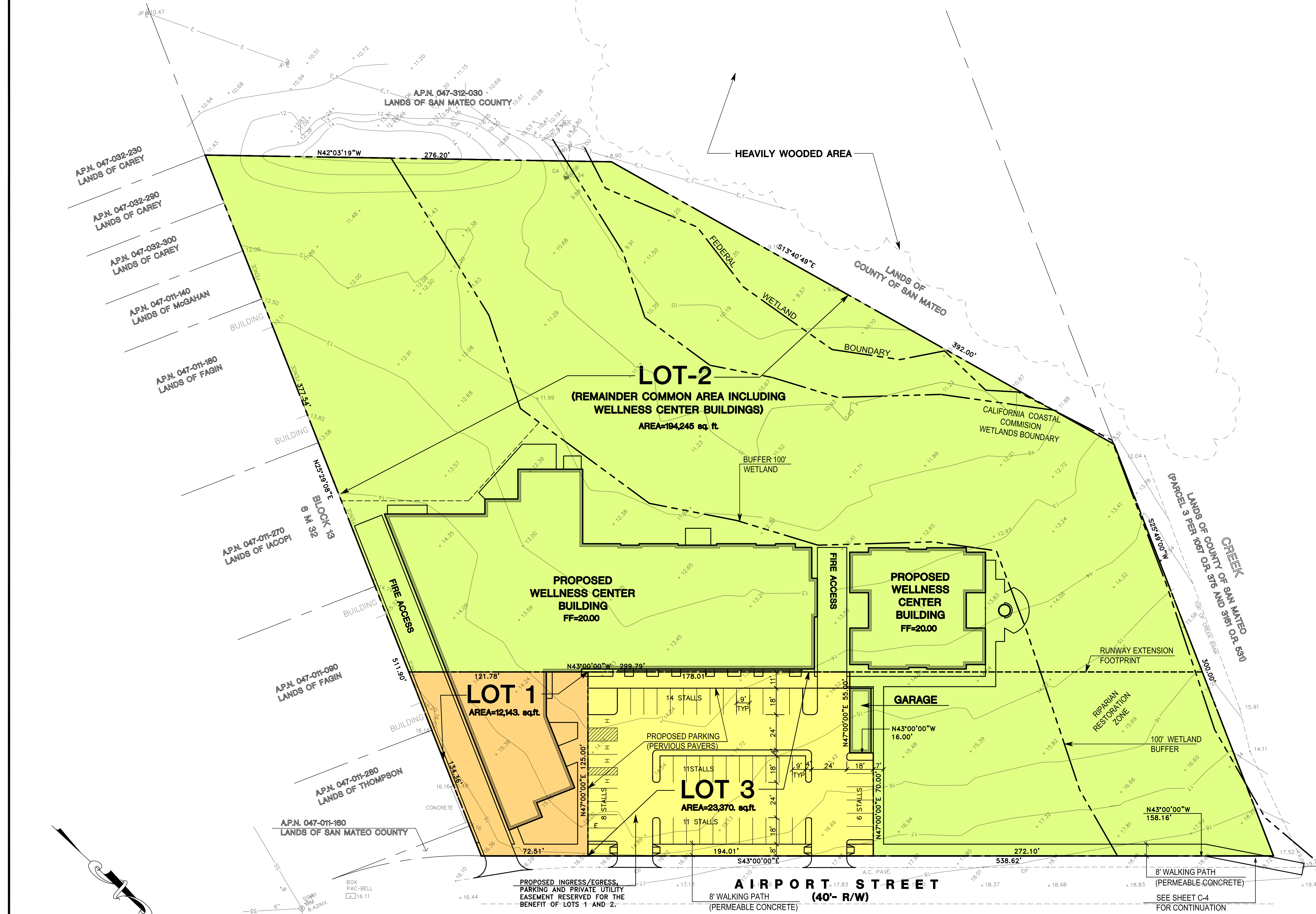
TYPICAL PARKING STALL DIMENSIONS = 9' X 18'

**TREE NOTE:**

THERE ARE NO EXISTING TREES ON THE SUBJECT PROPERTY.

**EASEMENT NOTE:**

PRIVATE UTILITY EASEMENTS WILL BE RESERVED OVER EACH PARCEL FOR THE BENEFIT OF THE OTHER PARCELS, WHERE APPROPRIATE. THE DELINEATION OF THOSE EASEMENTS IS NOT SHOWN ON THESE PLANS, BUT WILL BE CONFIGURED AND DELINEATED DURING THE BUILDING PERMIT PROCESS.

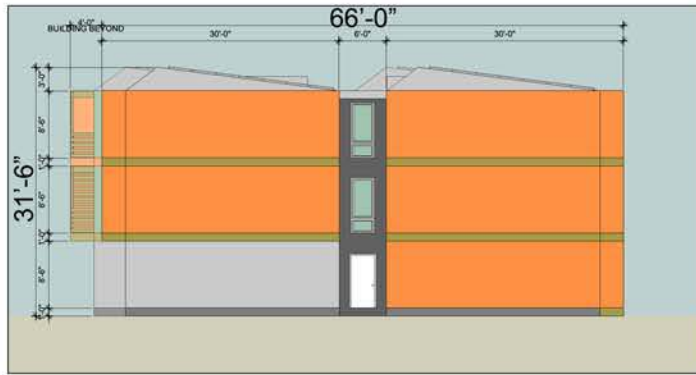


<p><b>MACLEOD AND ASSOCIATES</b> CIVIL ENGINEERING • LAND SURVEYING 965 CENTER STREET • SAN CARLOS, CA 94070 • (650) 593-8580</p>	<p>DATE: _____ BY: _____ REVISION: _____</p>
<p>PREPARED FOR: BIG WAVE LLC</p>	
<p>VESTING TENTATIVE PARCEL MAP BEING A SUBDIVISION OF A.P.N. 047-312-040 BIG WAVE WELLNESS CENTER AIRPORT STREET SAN MATEO COUNTY, CALIFORNIA</p>	
<p>DRAWN BY: AAP DESIGNED BY: VPG CHECKED BY: DGM SCALE: 1" = 30' DATE: 05/17/10 DRAWING NO. 1584-00 SHEET <b>C-1</b></p>	



NORTH STACK - SOUTHWEST ELEVATION

3



NORTH STACK - NORTHWEST ELEVATION

2



NORTH STACK - NORTHEAST ELEVATION

1

Source: Michelle Kaufman Designs, June 20, 2008.





NORTHEAST ELEVATION

③



SOUTH ELEVATION

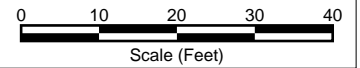
②



EAST ELEVATION

①

Source: Michelle Kaufman Designs, June 20, 2008.

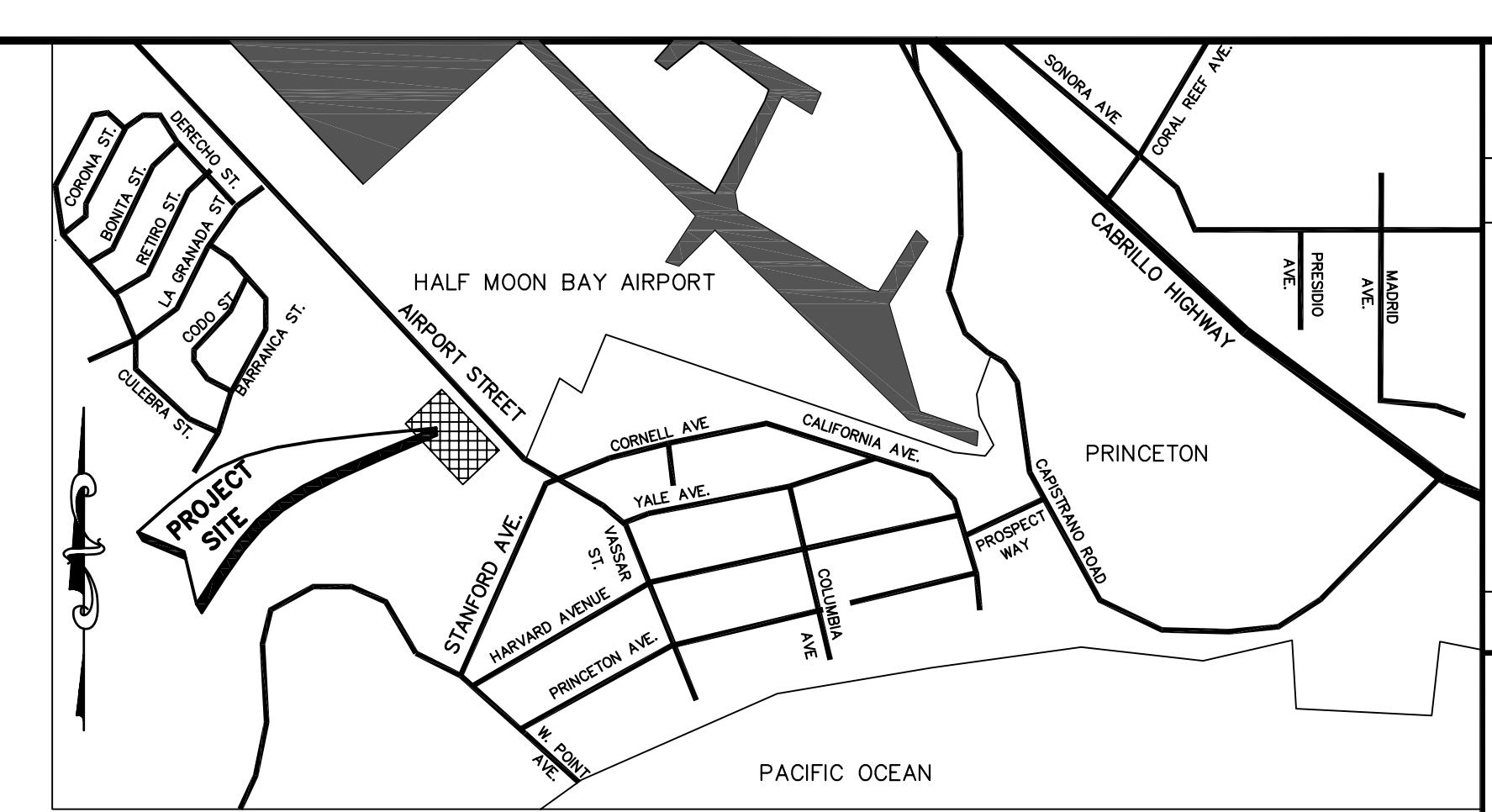


**PARKING NOTE:**

TYPICAL PARKING STALL DIMENSIONS = 9' X 20'  
TYPICAL HANDICAP PARKING STALL = 9' X 20' WITH 8' WIDE UNLOADING AREA

**TREE NOTE:**

THERE ARE NO EXISTING TREES ON THE SUBJECT PROPERTY.



**LOCATION MAP**

NOT TO SCALE

**RECORD OWNER AND SUBDIVIDER:**

BIG WAVE LLC  
P.O. BOX 700  
BELMONT CA. 94002

**LAND SURVEYOR AND CIVIL ENGINEER**

MacLeod & Associates  
965 CENTER STREET  
SAN CARLOS, CA 94070  
(650) 593-8580

**ASSESSOR'S PARCEL NUMBER**

047-311-060

**EXISTING & PROPOSED ZONING**

M-1/DR - LIGHT INDUSTRIAL WITH DESIGN REVIEW

**UTILITIES:**

GAS AND ELECTRICITY: PACIFIC GAS AND ELECTRIC COMPANY  
SANITARY SEWER: GRANADA SANITARY DISTRICT  
WATER: COASTSIDE WATER DISTRICT  
TELEPHONE: A T & T  
FIRE PROTECTION: HALF MOON BAY

**FLOOD ZONE:**

" C "

**UTILITY NOTE:**

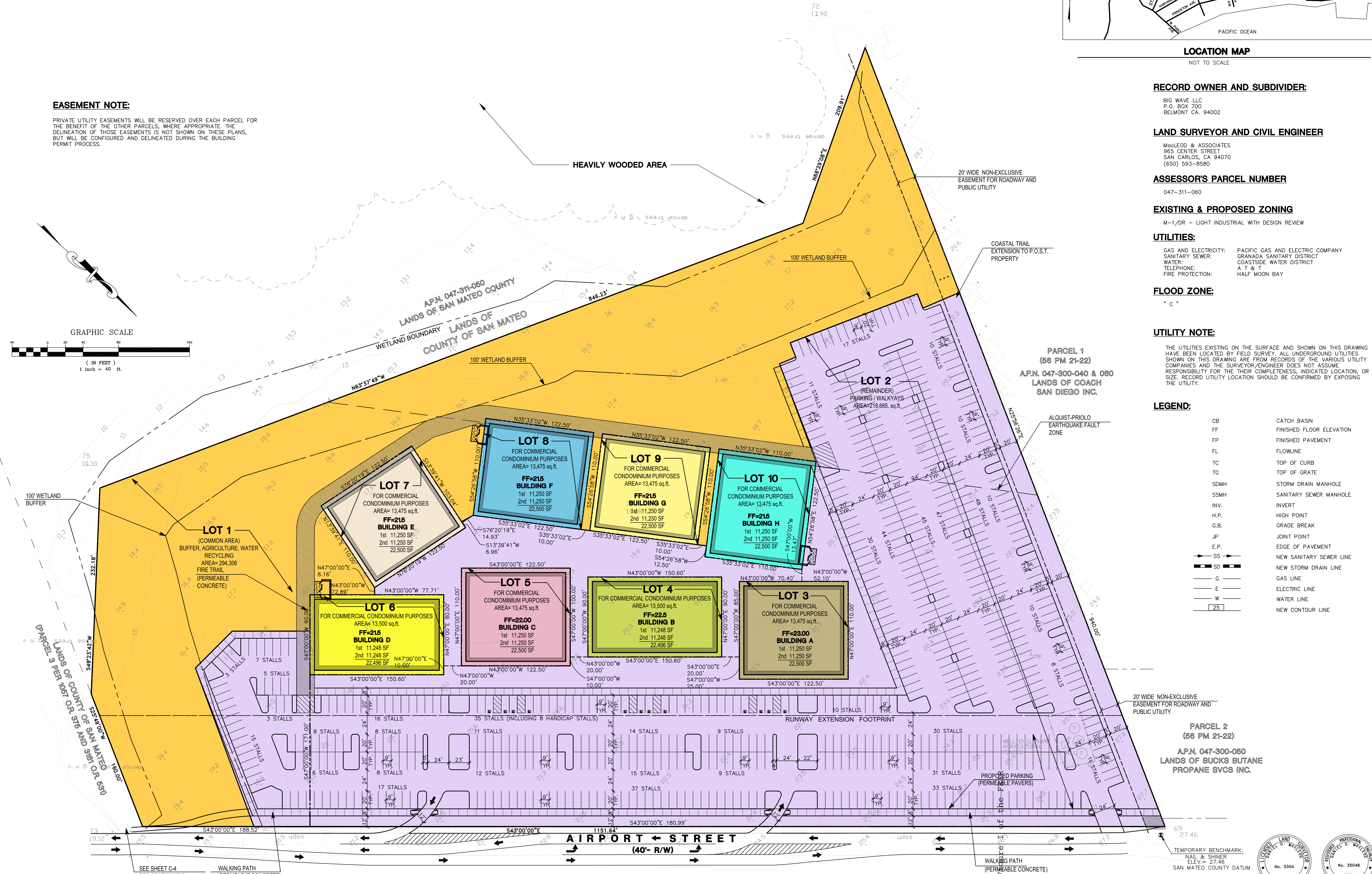
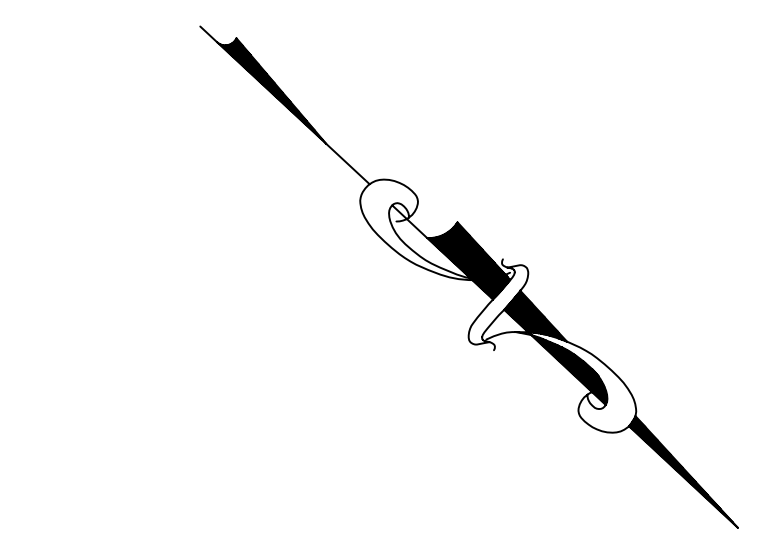
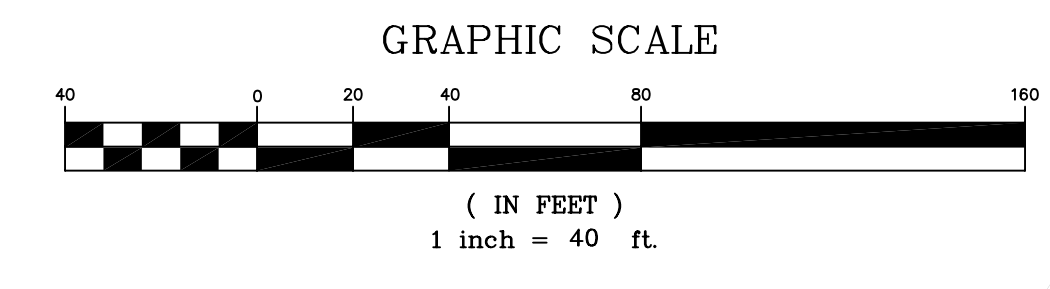
THE UTILITIES EXISTING ON THE SURFACE AND SHOWN ON THIS DRAWING HAVE BEEN LOCATED BY FIELD SURVEY. ALL UNDERGROUND UTILITIES SHOWN ON THIS DRAWING ARE FROM RECORDS OF THE VARIOUS UTILITY COMPANIES AND THE SURVEYOR/ENGINEER DOES NOT ASSUME RESPONSIBILITY FOR THE THEIR COMPLETENESS, INDICATED LOCATION, OR SIZE. RECORD UTILITY LOCATION SHOULD BE CONFIRMED BY EXPOSING THE UTILITY.

**LEGEND:**

- CB CATCH BASIN
- FF FINISHED FLOOR ELEVATION
- FP FINISHED PAVEMENT
- FL FLOWLINE
- TC TOP OF CURB
- TG TOP OF GRATE
- SDMH STORM DRAIN MANHOLE
- SSMH SANITARY SEWER MANHOLE
- INV INVERT
- H.P. HIGH POINT
- G.B. GRADE BREAK
- JP JOINT POINT
- E.P. EDGE OF PAVEMENT
- SS NEW SANITARY SEWER LINE
- SD NEW STORM DRAIN LINE
- G GAS LINE
- E ELECTRIC LINE
- W WATER LINE
- 25 NEW CONTOUR LINE

**EASEMENT NOTE:**

PRIVATE UTILITY EASEMENTS WILL BE RESERVED OVER EACH PARCEL FOR THE BENEFIT OF THE OTHER PARCELS, WHERE APPROPRIATE. THE DELINEATION OF THOSE EASEMENTS IS NOT SHOWN ON THESE PLANS, BUT WILL BE CONFIGURED AND DELINEATED DURING THE BUILDING PERMIT PROCESS.



PARCEL 1  
(56 PM 21-22)  
A.P.N. 047-300-040 & 060  
LANDS OF COACH  
SAN DIEGO INC.

PARCEL 2  
(56 PM 21-22)  
A.P.N. 047-300-050  
LANDS OF BUCKS BUTANE  
PROPANE SVCS INC.

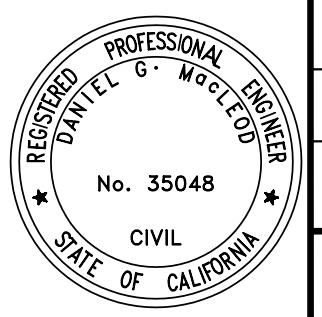
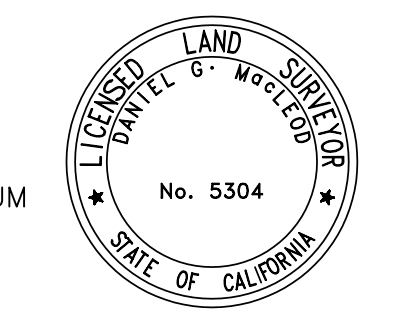
REV.	DESCRIPTION	DATE

**MacLEOD AND ASSOCIATES**  
CIVIL ENGINEERING • LAND SURVEYING  
965 CENTER STREET • SAN CARLOS, CA 94070 • (650) 593-8580

PREPARED FOR:  
BIG WAVE LLC

VESTING TENTATIVE SUBDIVISION MAP FOR COMMERCIAL CONDOMINIUM PURPOSES "BIG WAVE OFFICE PARK"  
BEING A SUBDIVISION OF A.P.N. 047-311-060  
AIRPORT STREET  
SAN MATEO COUNTY  
CALIFORNIA

DRAWN BY: AAP  
DESIGNED BY: VPG  
CHECKED BY: DGM  
SCALE: 1" = 40'  
DATE: 05/17/10  
DRAWING NO. 1608-00  
SHEET



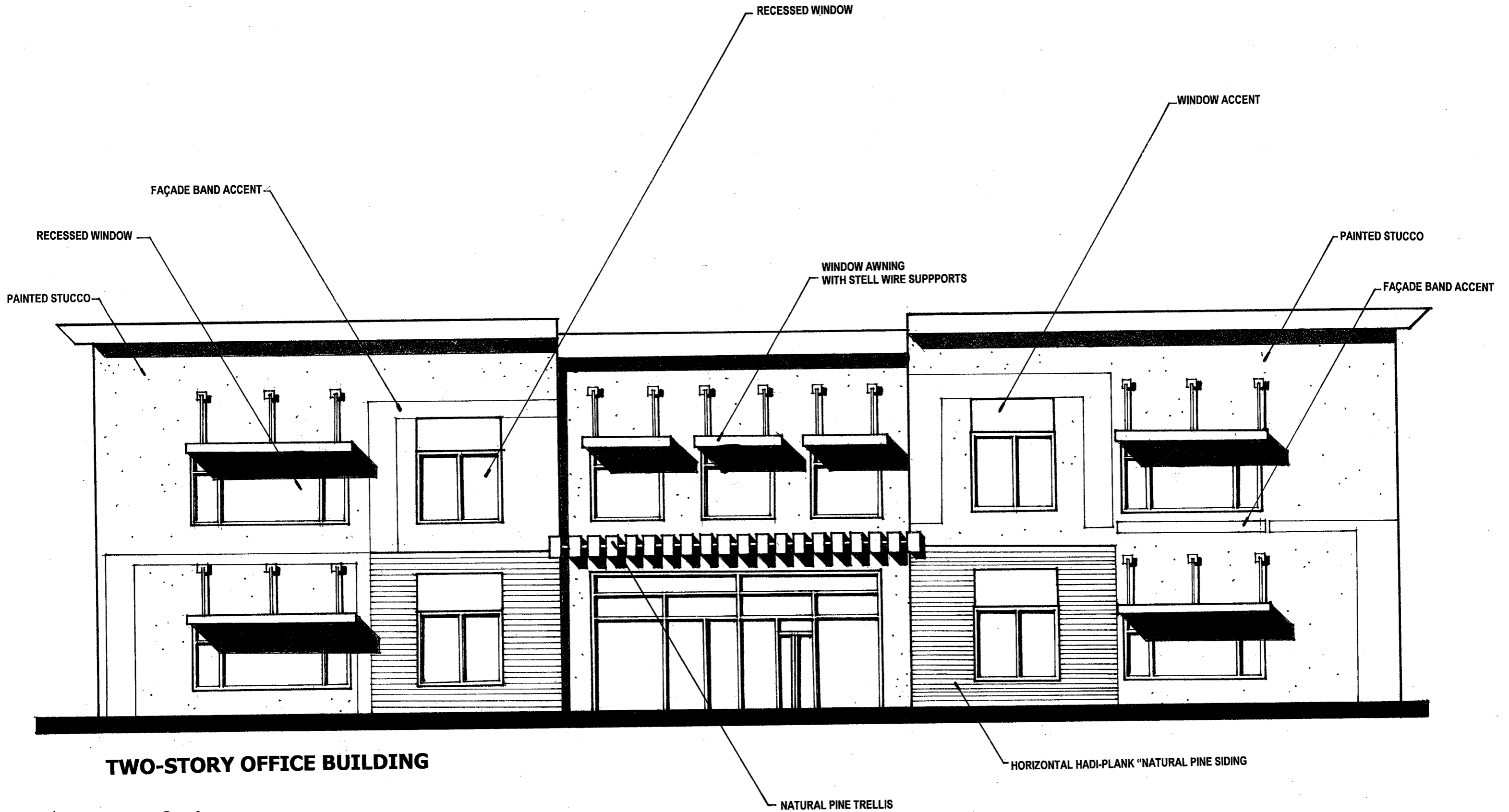


Figure E of the FEIR



HORIZONTAL HADI-PLANK "NATURAL PINE SIDING"

WINDOW AWNING  
WITH STEEL WIRE SUPPORTS

RECESSED WINDOW

PAINTED STUCCO

RECESSED WINDOW

**THREE-STORY OFFICE BUILDING**

WINDOW ACCENT

ENTRY CANOPY

HORIZONTAL HADI-PLANK "NATURAL PINE SIDING"