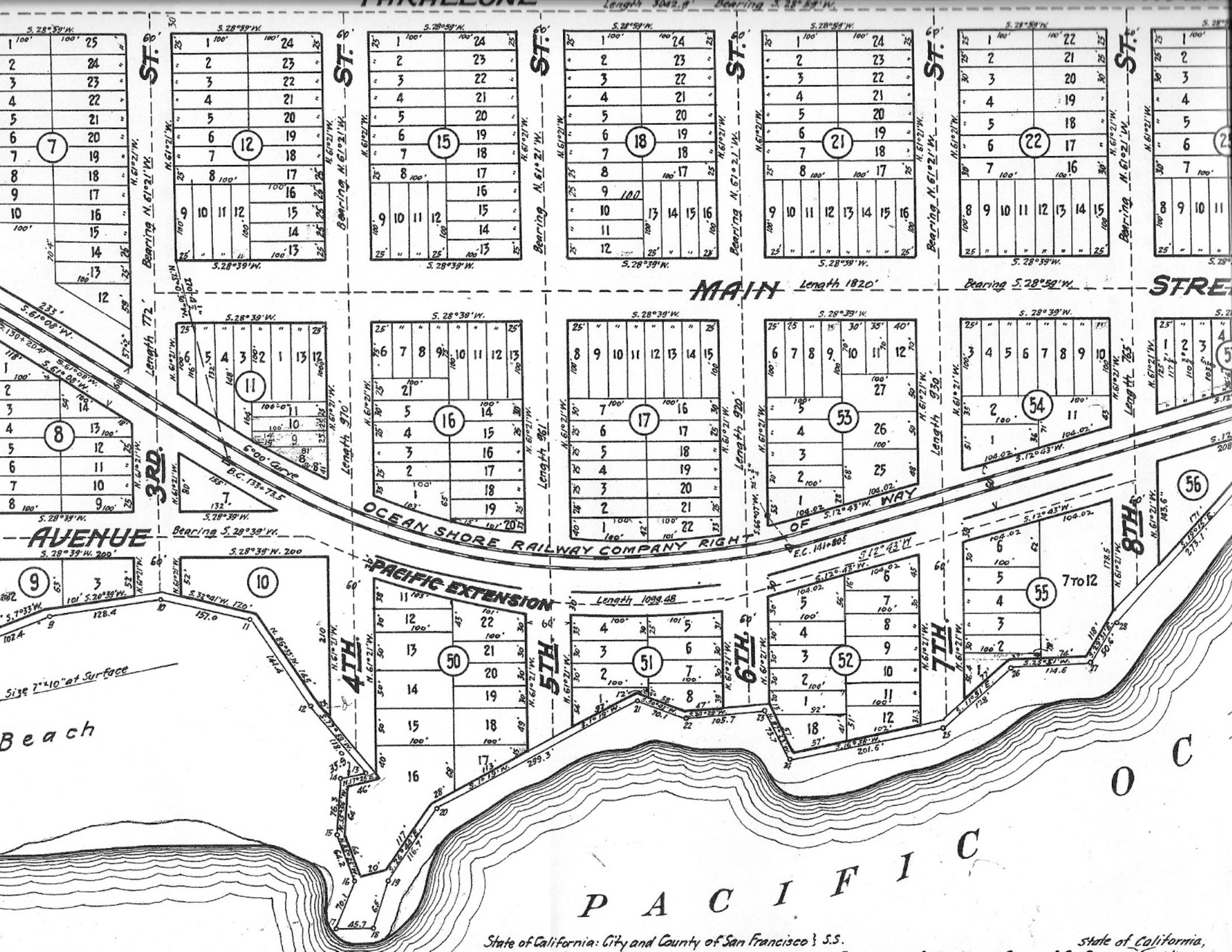




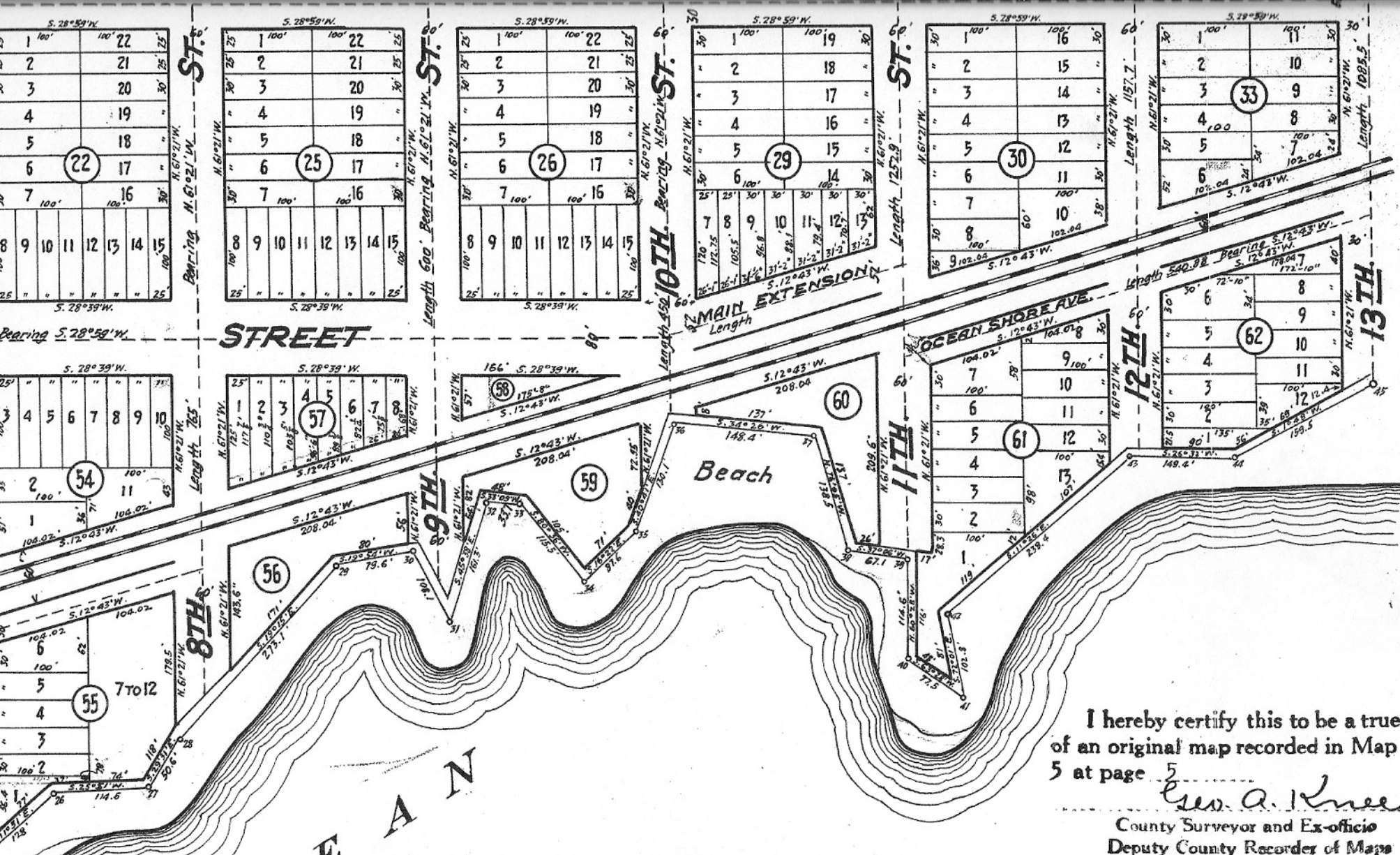
Redwood Stake 3"x3" standing as an artificial monument on the North Westerly corner of said Tract. Bearing same as true Meridian.



PACIFIC

State of California: City and County of San Francisco } S.S.

state of California,



I hereby certify this to be a true copy of an original map recorded in Map Book 5 at page 5

Geo. A. Kneese
 County Surveyor and Ex-officio
 Deputy County Recorder of Maps

East Avenue, Farallone Avenue, Pacific Avenue, Kanoff Avenue, Main Street, First Street, Second Street, Third Street, Fourth Street, Fifth Street, Sixth Street, Seventh Street, Eighth Street, Ninth Street, Tenth Street, Eleventh Street and Twelfth Street as delineated and designated on this map are hereby accepted by the Board of Supervisors of San Mateo County, State of California, on behalf of the public as dedicated to public use, and Pacific Extension, Main Extension, Ocean Shore Avenue and Marine Walk are by said Board rejected in accordance with and subject to the terms of a resolution of said Board, adopted this 20th day of May, A. D. 1907.

(Signed) Jos. H. Nash
 Clerk of said Board of Supervisors.

This is to certify that there are no liens for unpaid taxes, State, County, Municipal, District or other taxes against the land or any part thereof included in the subdivision as set forth and delineated upon the within map.

Dated this 20th day of May, 1907.

(Signed) W. H. Underhill

State of California,