

# Highway 1 Congestion & Safety Improvement Project

March 11, 2015



# Tonight's Workshop!

- Welcome and Introductions
- Overview of the Process
- Review of the Alternatives
- Preferences – Review Boards and Provide Comments
- Click Polling for Alternatives
- Next Steps

# Overview of Draft Preliminary Planning Study

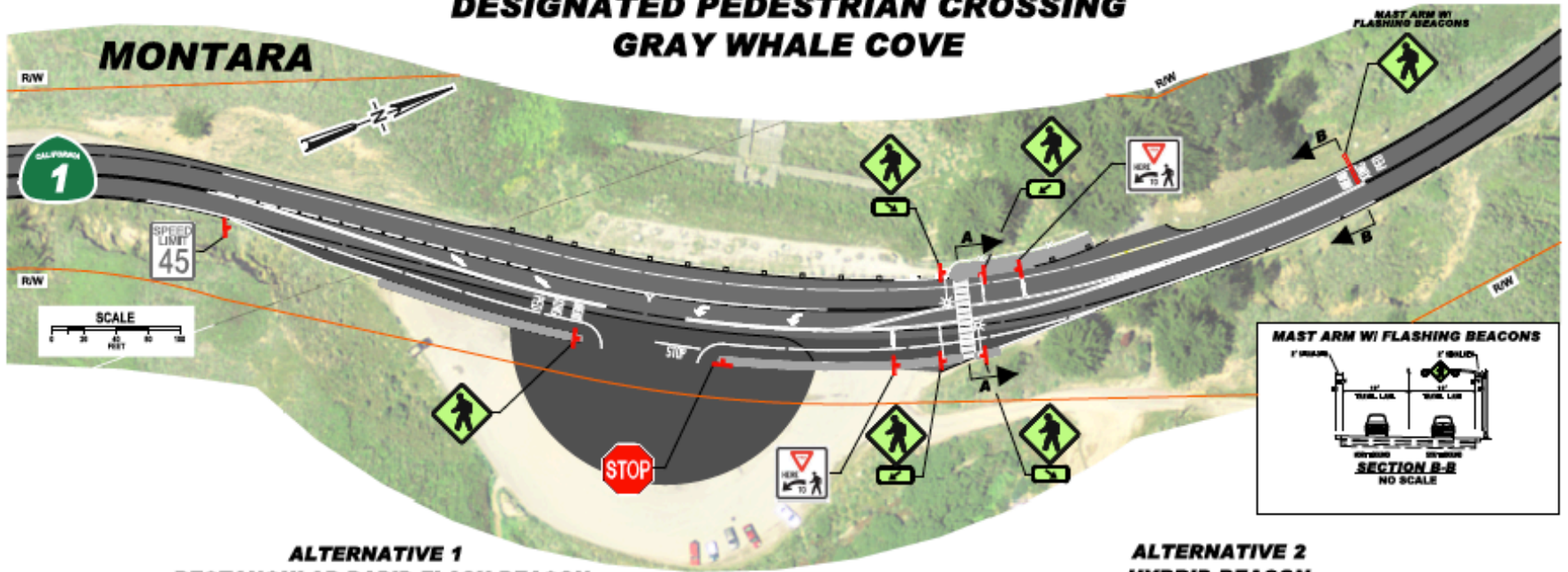
- Addresses congestion and pedestrian & bicyclist safety along a seven mile stretch of Highway 1 from Gray Whale Cove south to Mirada Road in Miramar.
- Focused on five project areas:
  - Mirada Road in Miramar
  - S. Etheldore Street to California Avenue in Moss Beach
  - 16th Street in Montara
  - 1st through 9th Streets in Montara
  - Gray Whale Cove

# Overview of Draft Preliminary Planning Study

- Improvements at each of the locations could be implemented independently of one another as separate or combined projects depending on feasibility, public acceptance, and available funds.
- Two alternatives were evaluated for each location, which represent the minimum and maximum cost and impacts. Three were reviewed for Moss Beach.
- The study screened each of the alternatives for environmental impacts, impacts to utility facilities, capital costs, and anticipated implementation timeframe.

# Gray Whale Cove

## DESIGNATED PEDESTRIAN CROSSING GRAY WHALE COVE



**ALTERNATIVE 1  
RECTANGULAR RAPID FLASH BEACON**

**SECTION A-A  
NO SCALE**

Push button activated rectangular rapid flashing beacons use an irregular flash pattern that is similar to emergency flashers and police vehicles to alert vehicular traffic.

**ALTERNATIVE 2  
HYBRID BEACON**

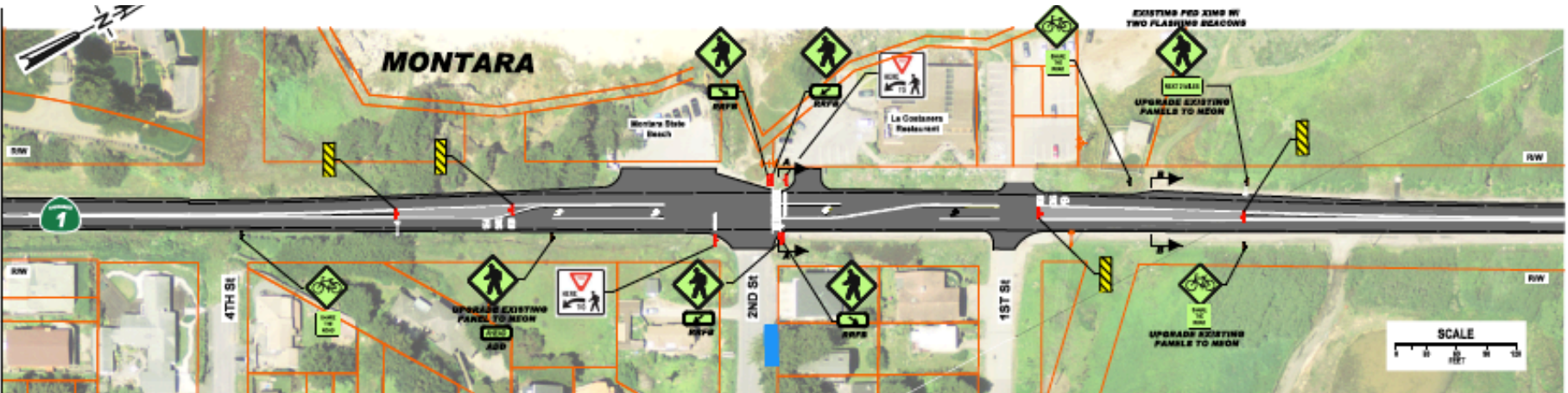
**SECTION A-A  
NO SCALE**

Push button activated hybrid beacon provides signaled crosswalk at mid-block location.

**LEGEND:**

# 2<sup>nd</sup> Street - Alternative 1

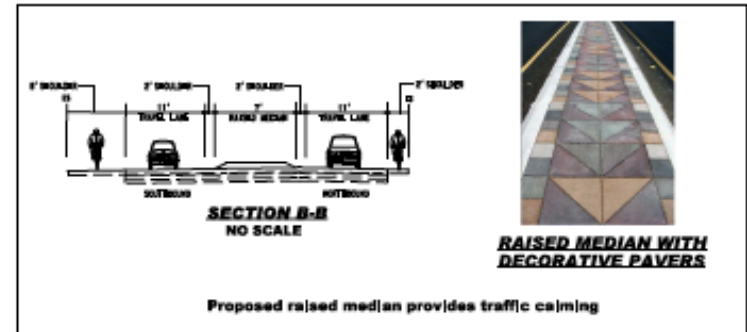
SEE 7TH STREET - ALTERNATIVE 1



**RECTANGULAR RAPID FLASH BEACON**



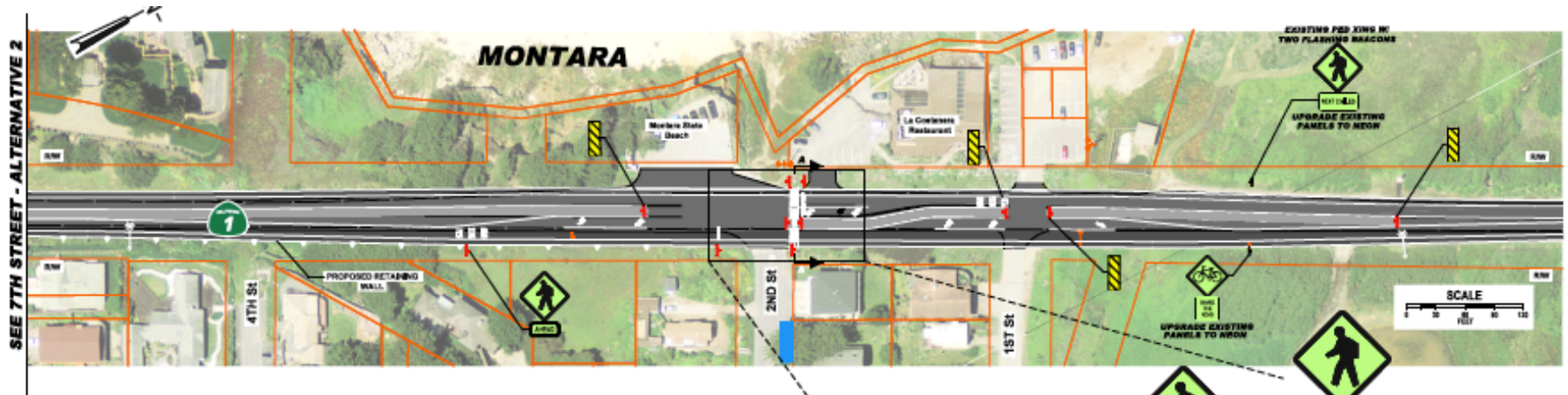
**RAISED MEDIAN WITH TYPE D CURB**



**LEGEND:**

- PROPOSED STRIPING**
- EXISTING ROADWAY**
- PROPOSED RAISED MEDIAN**
- EXISTING STRIPING**
- EXISTING BUS STOP**
- PROPOSED SIGNAGE**

# 2<sup>nd</sup> Street – Alternative 2



## RAISED MEDIAN WITH TYPE D CURB



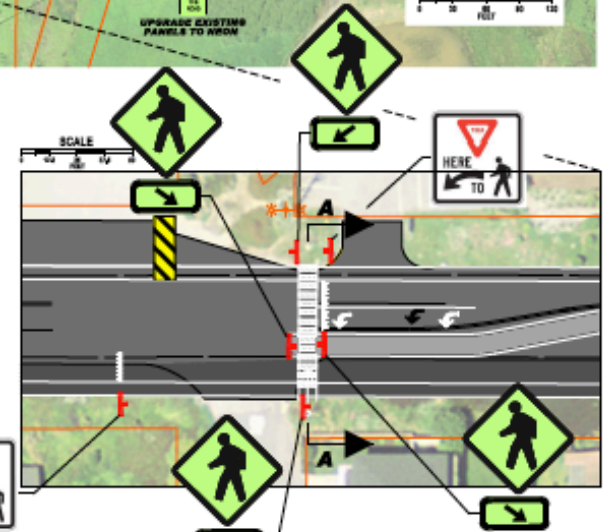
SECTION A-A  
NO SCALE

Proposed raised median provides traffic calming and pedestrian refuge



## RAISED MEDIAN WITH DECORATIVE PAVERS

Proposed raised median provides traffic calming and refuge for crossing pedestrians



### LEGEND:

PROPOSED WIDENING  
 EXISTING ROADWAY

PROPOSED STRIPING  
 EXISTING STRIPING

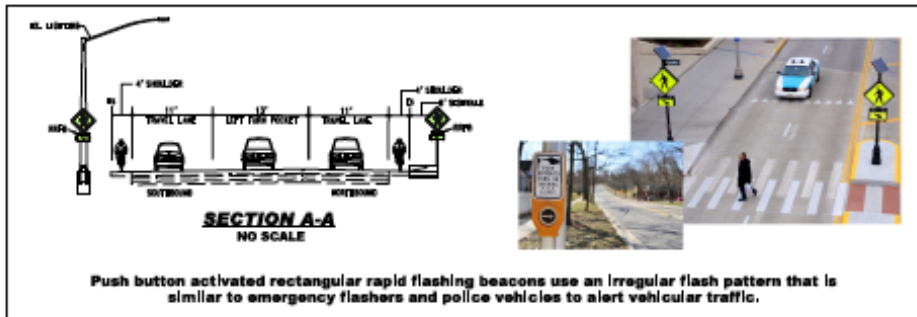
PROPOSED RAISED MEDIAN  
 PROPOSED SIGNAGE

EXISTING BUS STOP  
 EXISTING SIGNAGE

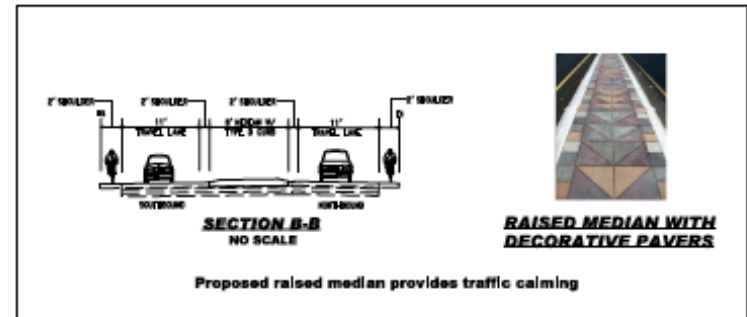
# 7<sup>th</sup> Street – Alternative 1



**RECTANGULAR RAPID FLASH BEACON**



**RAISED MEDIAN WITH TYPE D CURB**

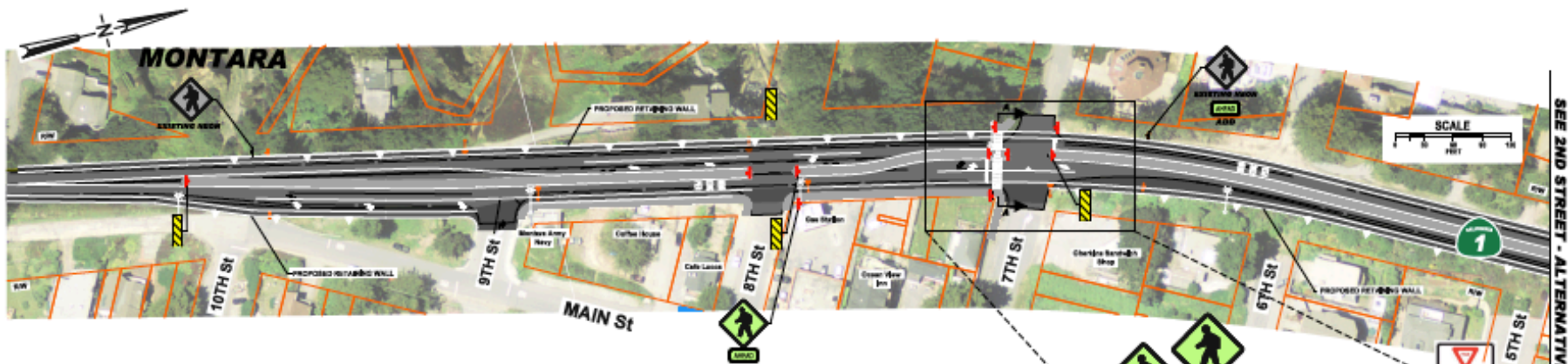


**LEGEND:**

- EXISTING STRIPING
- EXISTING BUS STOP
- PROPOSED STRIPING
- PROPOSED RAISED MEDIAN
- PROPOSED SIGNAGE
- EXISTING SIGNAGE

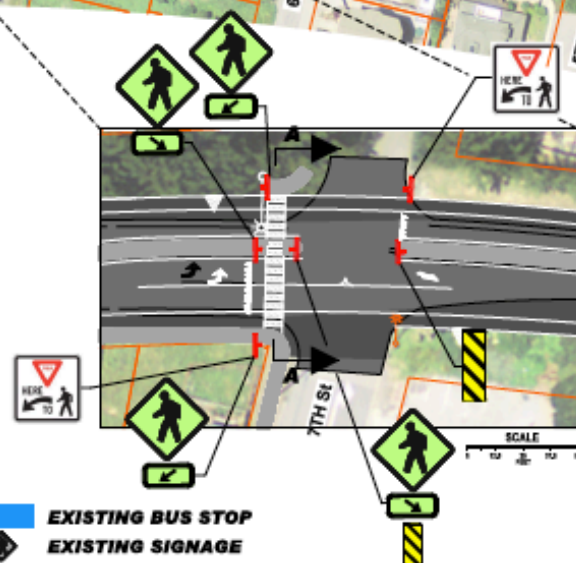
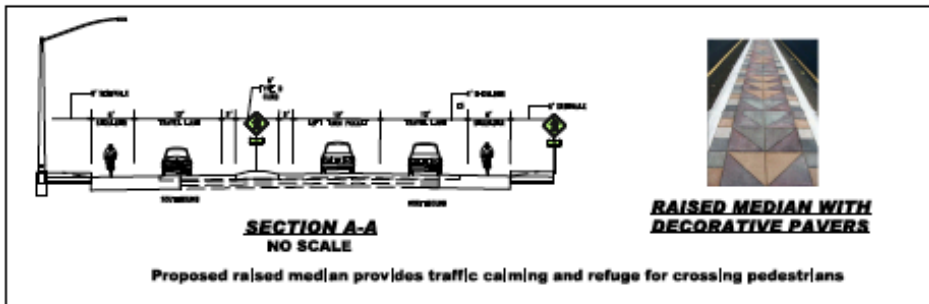


# 7<sup>th</sup> Street – Alternative 2



SEE 2ND STREET - ALTERNATIVE 2

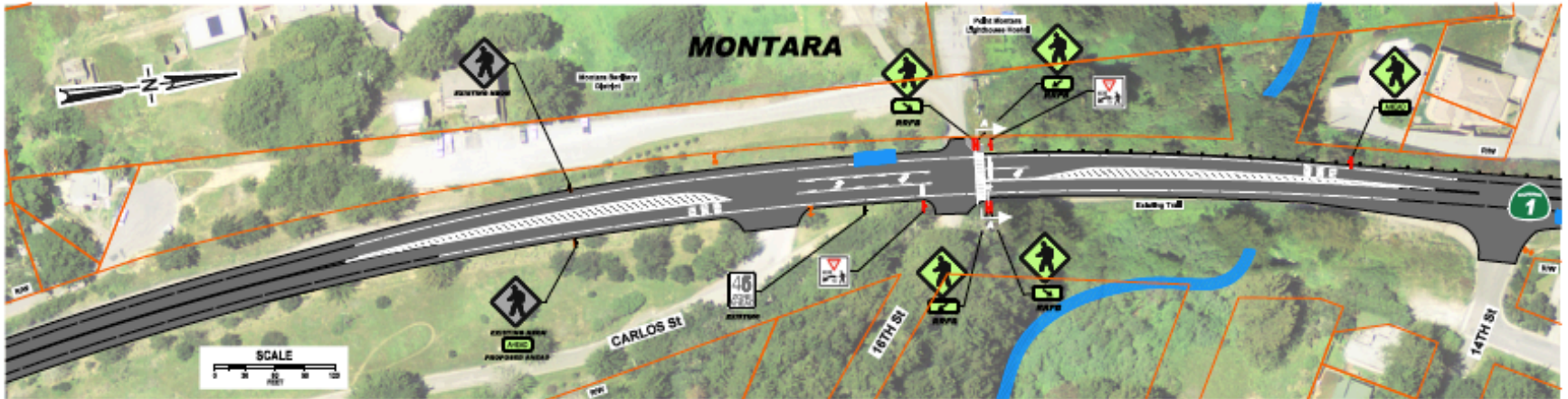
**RAISED MEDIAN WITH TYPE D CURB**



**LEGEND:**

- PROPOSED WIDENING
- PROPOSED STRIPING
- PROPOSED RAISED MEDIAN
- EXISTING BUS STOP
- EXISTING STRIPING
- PROPOSED SIGNAGE
- EXISTING SIGNAGE

# 16<sup>th</sup> Street – Alternative 1



**RECTANGULAR RAPID FLASHING BEACON WITH PAINTED MEDIAN**

**SECTION A-A**  
NO SCALE

**HIGH VISIBILITY PAINTED MEDIAN**

Painted median helps to provide traffic calming.

**RECTANGULAR RAPID FLASHING BEACON**

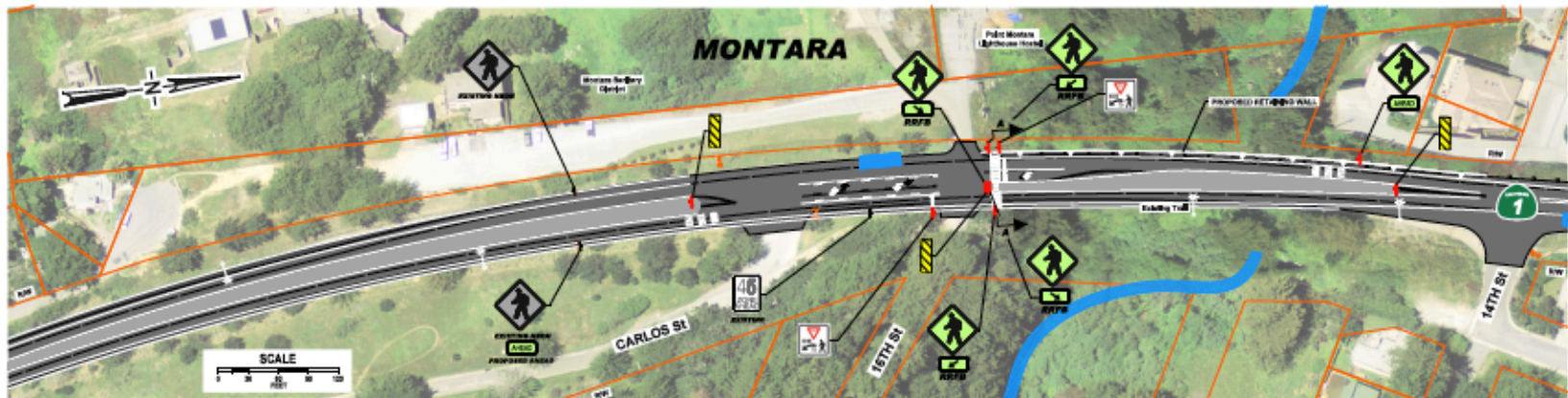
Push button activated rectangular rapid flashing beacons use an irregular flash pattern that is similar to emergency flashers and police vehicles to alert vehicular traffic.

**LEGEND:**

- |                   |                   |                  |
|-------------------|-------------------|------------------|
| EXISTING STRIPING | EXISTING BUS STOP | EXISTING SIGNAGE |
| EXISTING ROADWAY  | PROPOSED STRIPING | PROPOSED SIGNAGE |

# 16<sup>th</sup> Street – Alternative 2

## DESIGNATED PEDESTRIAN CROSSING 16TH STREET - ALTERNATIVE 2



### RAISED MEDIAN WITH TYPE D CURB AND RAPID RECTANGULAR FLASHING BEACONS

**SECTION A-A**  
NO SCALE

**RAISED MEDIAN WITH DECORATIVE PAVERS**  
Proposed raised median provides traffic calming and refuge for crossing pedestrians

**RAPID RECTANGULAR FLASHING BEACONS**  
Push button activated rectangular rapid flashing beacons use an irregular flash pattern that is similar to emergency flashers and police vehicles to alert vehicular traffic.

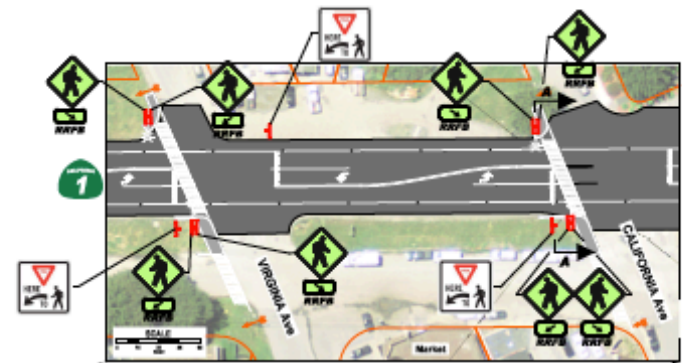
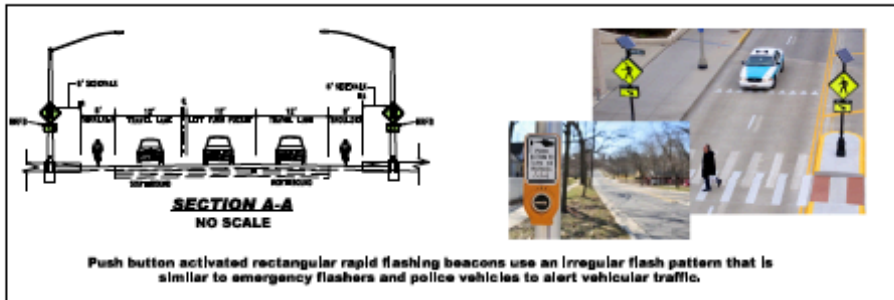
#### LEGEND:

- |  |                   |  |                   |  |                        |  |                   |
|--|-------------------|--|-------------------|--|------------------------|--|-------------------|
|  | PROPOSED WIDENING |  | PROPOSED STRIPING |  | PROPOSED RAISED MEDIAN |  | EXISTING BUS STOP |
|  | EXISTING ROADWAY  |  | EXISTING STRIPING |  | PROPOSED SIGNAGE       |  | EXISTING SIGNAGE  |

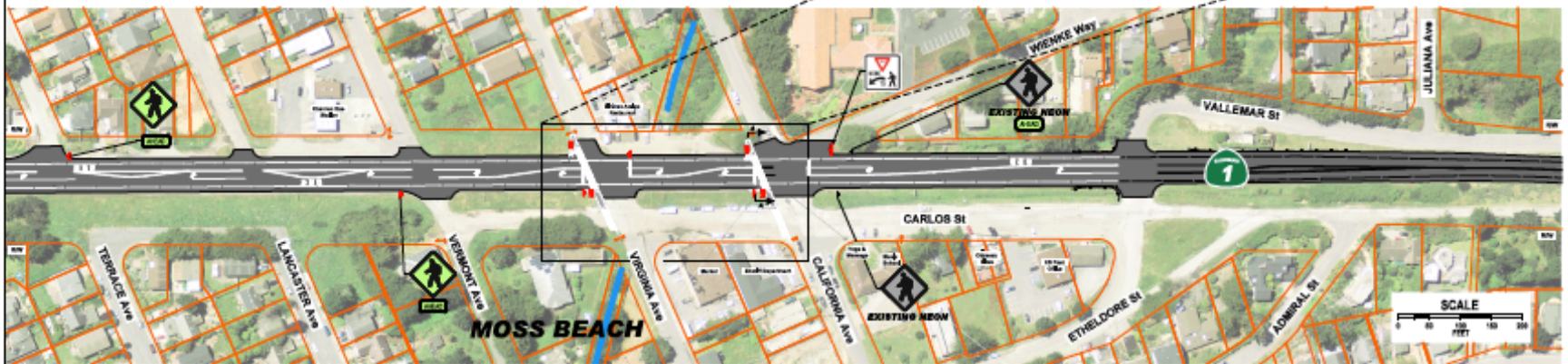
# California Ave – Alternative 1A

## DESIGNATED PEDESTRIAN CROSSINGS VIRGINIA & CALIFORNIA AVE - ALTERNATIVE 1A

### RECTANGULAR RAPID FLASH BEACON



SEE CYPRESS AVE - ALTERNATIVE 1



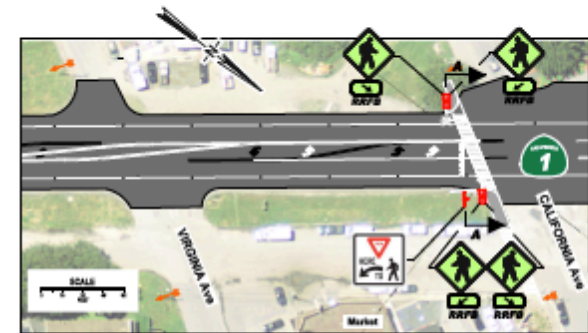
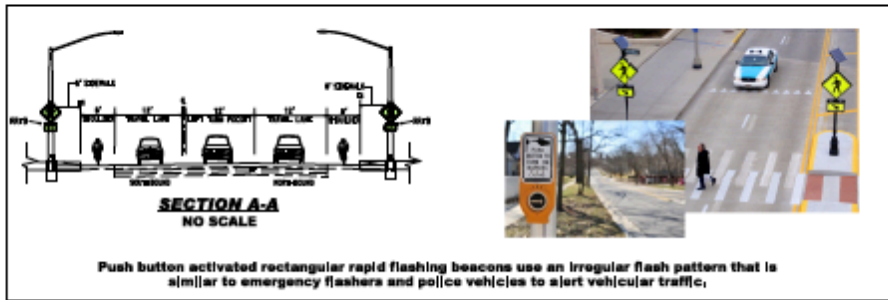
### LEGEND:

- EXISTING STRIPING
- PROPOSED STRIPING






# California Ave – Alternative 1B

## DESIGNATED PEDESTRIAN CROSSINGS VIRGINIA & CALIFORNIA AVE - ALTERNATIVE 1B

### RECTANGULAR RAPID FLASH BEACON



### LEGEND:

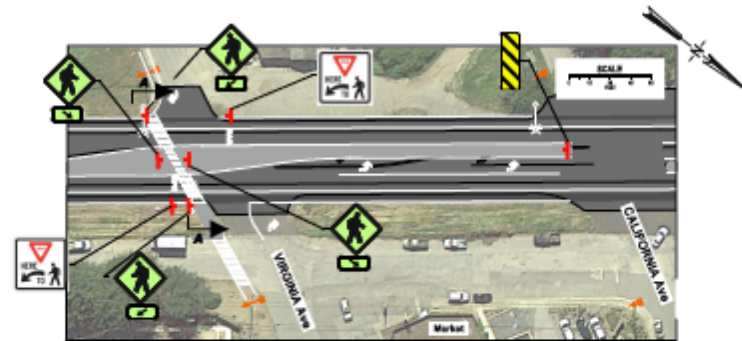
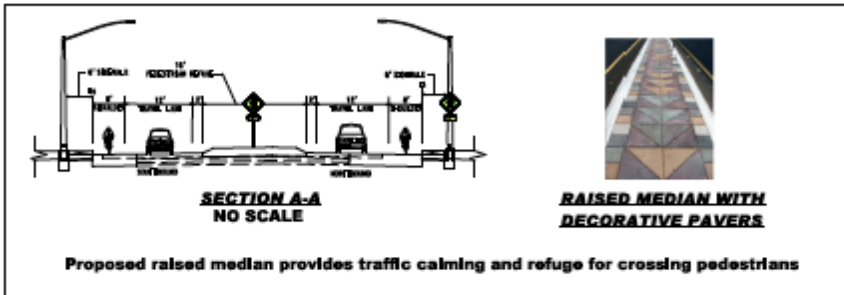
-  EXISTING STRIPING
-  PROPOSED STRIPING
-  EXISTING ROADWAY
-  PROPOSED SIGNAGE
-  EXISTING SIGNAGE

SEE CYPRESS AVE - ALTERNATIVE 1

# California Ave – Alternative 2

## DESIGNATED PEDESTRIAN CROSSINGS VIRGINIA & CALIFORNIA AVE - ALTERNATIVE 2

**RAISED MEDIAN WITH TYPE D CURB**



SEE CYPRESS AVE - ALTERNATIVE 2



**LEGEND:**

- PROPOSED WIDENING**
- PROPOSED STRIPING**
- PROPOSED RAISED MEDIAN**

# Cypress & Etheldore – Alternative 1

## DESIGNATED PEDESTRIAN CROSSING / RAISED MEDIAN CYPRESS AVE - ALTERNATIVE 1

### HIGH VISIBILITY PAINTED MEDIAN



SECTION B-B  
NO SCALE



Painting existing median helps to provide traffic calming

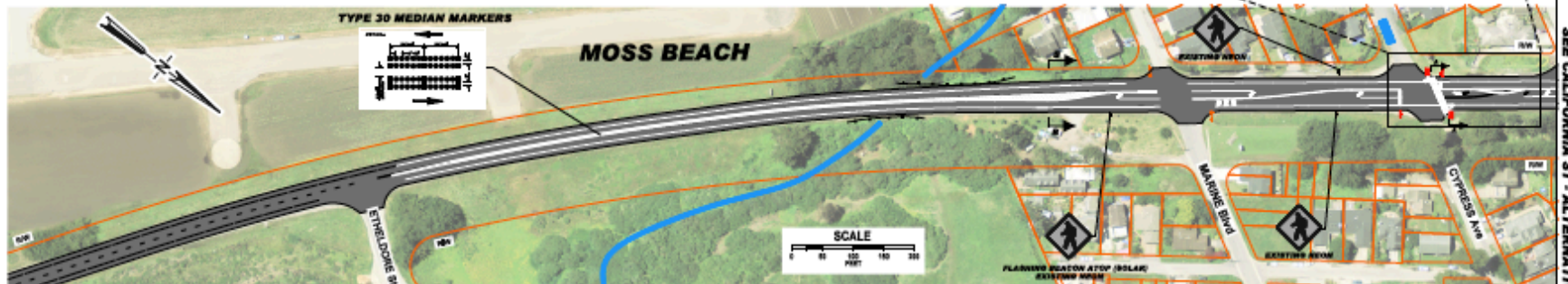
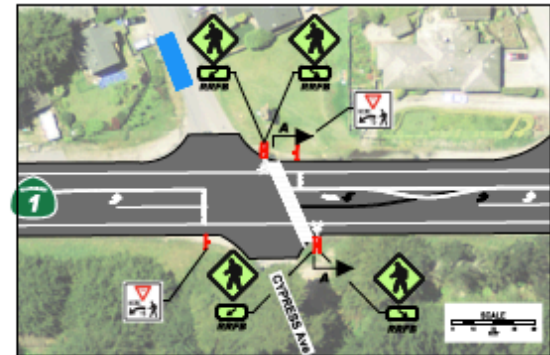
### RECTANGULAR RAPID FLASHING BEACON



SECTION A-A  
NO SCALE



Push button activated rectangular rapid flashing beacons use an irregular flash pattern that is similar to emergency flashers and police vehicles to alert vehicular traffic.



### LEGEND:

PROPOSED STRIPING

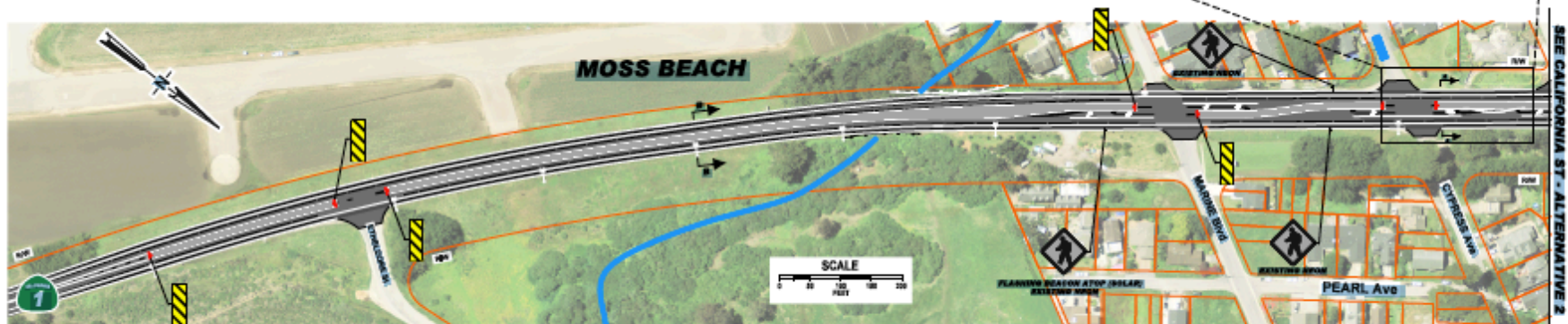
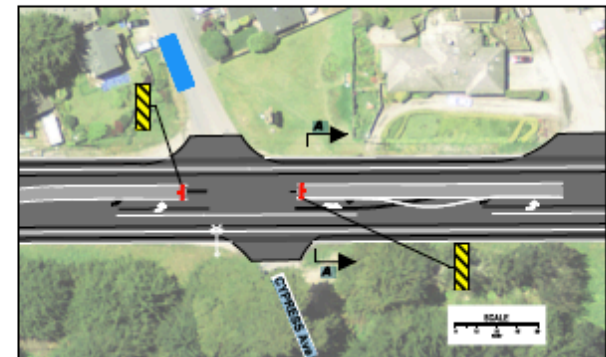
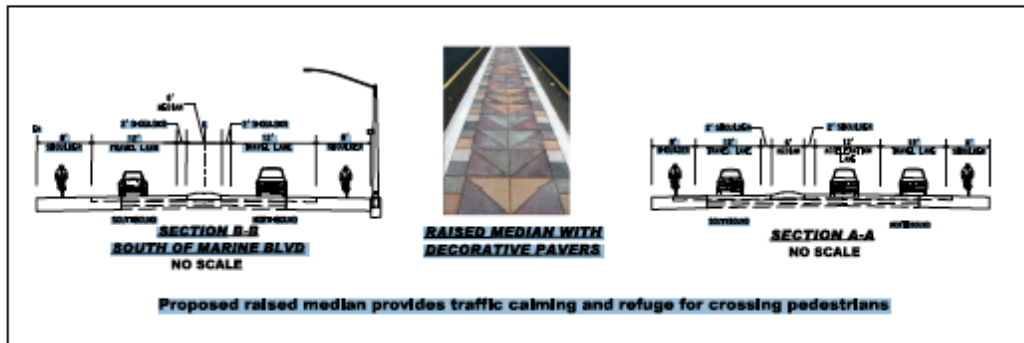
EXISTING BUS STOP

EXISTING SIGNAGE

# Cypress & Ethelodore – Alternative 2

## DESIGNATED PEDESTRIAN CROSSING | RAISED MEDIAN CYPRESS AVE - ALTERNATIVE 2

### RAISED MEDIAN WITH TYPE D CURB



### LEGEND:

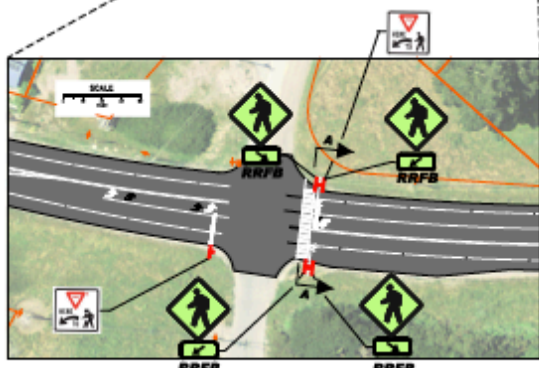
-  PROPOSED WIDENING
-  PROPOSED STRIPING
-  PROPOSED RAISED MEDIAN
-  EXISTING BUS STOP

SEE CALIFORNIA ST. - ALTERNATIVE 2

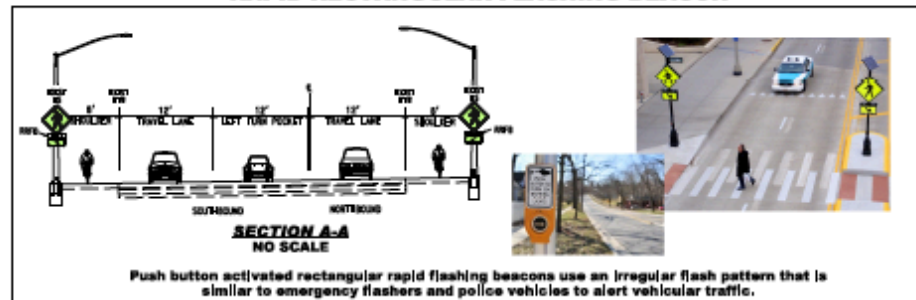


# Mirada Road – Alternative 1

## DESIGNATED PEDESTRIAN CROSSING MIRADA ROAD - ALTERNATIVE 1



### RAPID RECTANGULAR FLASHING BEACON

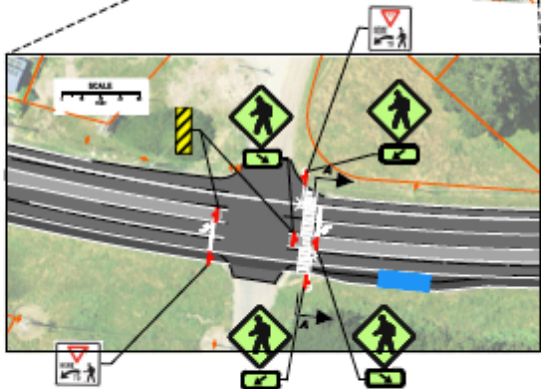


#### LEGEND:

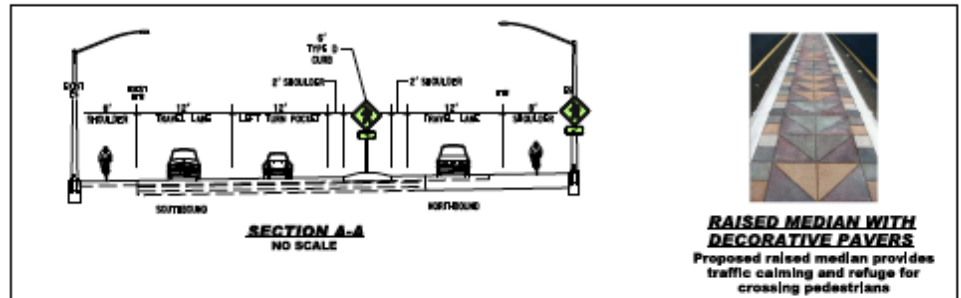
-  PROPOSED SIGNAGE
-  EXISTING BUS STOP
-  EXISTING ROADWAY
-  PROPOSED STRIPING
-  EXISTING STRIPING
-  EXISTING BUS STOP

# Mirada Road – Alternative 2

## DESIGNATED PEDESTRIAN CROSSING MIRADA ROAD - ALTERNATIVE 2



### RAISED MEDIAN WITH TYPE D CURB



### LEGEND:

- PROPOSED WIDENING
- EXISTING ROADWAY
- PROPOSED STRIPING
- EXISTING STRIPING
- PROPOSED RAISED MEDIAN
- PROPOSED SIGNAGE
- EXISTING BUS STOP

# Alternatives Matrix

Table 1-1: Highway 1 Preliminary Planning Study Alternatives Matrix

Location	Alternative	Estimated Capital Cost (in thousands)	Estimated Construction Completion	Environmental Impact	Utility Impact
Mirada Road	1	\$380	2018	Low	None
	2	\$4,130	2020	Med	Low
Moss Beach	1A	\$680	2018	Low	None
	1B	\$580	2018	Low	None
	2	\$6,880	2020	Med	Low
16 <sup>th</sup> Street Montara	1	\$380	2018	Low	None
	2	\$3,300	2020	Med	Med
1 <sup>st</sup> – 9 <sup>th</sup> Street	1	\$660	2018	Low	None
	2	\$7,250	2020	Med	High
Gray Whale Cove	1	\$960	2020	Med	Med
	2	\$1,060	2020	Med	Med

Notes:

Does not include support cost


Refer to schedule assumptions

Low = Minimizes impacts  
Med = Some impacts or potential mitigation

Low > \$50K  
> Med > \$150K < High

# Public Comment

Preliminary Planning Study For  
Highway 1 Congestion and Safety Improvement Project  
Comment Card



Circle Your Preference and Provide Comments Below

Project Area	Alternative 1	Alternative 2
Gray Whale Cove		
2 <sup>nd</sup> Street		
7 <sup>th</sup> Street		

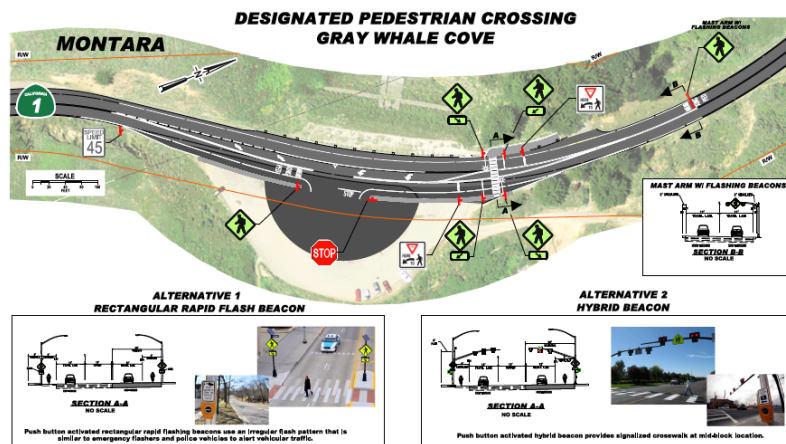
- ➔ Review each of the proposed improvements by project area and provide comments.
- ➔ Provide comments online through March 31, 2015
  - ➔ [www.SMCSpeakOut.com](http://www.SMCSpeakOut.com)

# Where do you live?

1. Montara
2. Moss Beach
3. Princeton
4. El Granada
5. Miramar
6. Half Moon Bay
7. Other

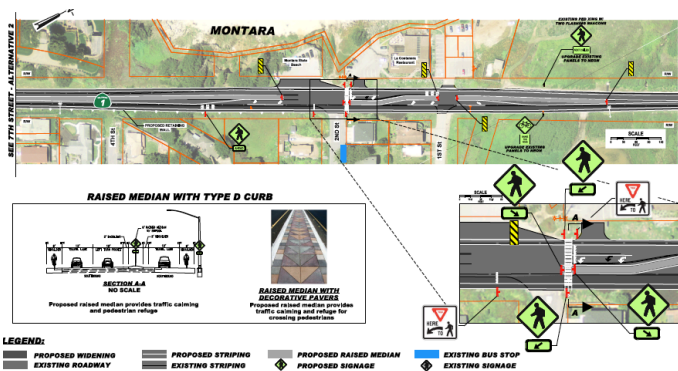
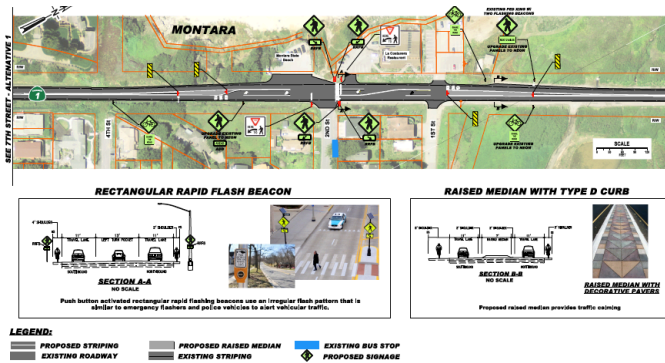
# Gray Whale Cove

1. Alternative 1
2. Alternative 2



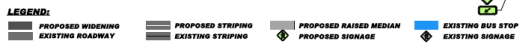
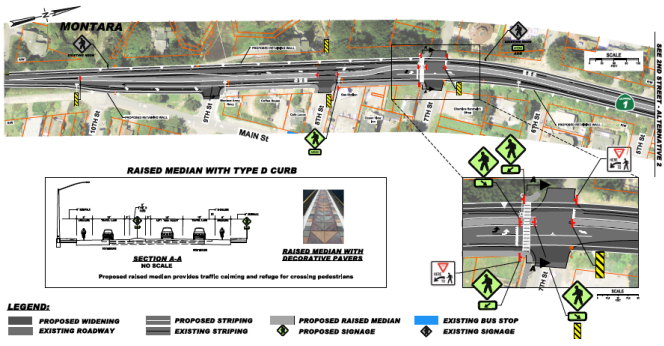
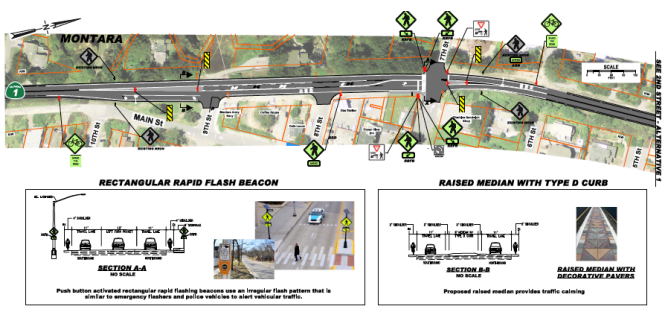
# 2<sup>nd</sup> Street

1. Alternative 1
2. Alternative 2



# 7th Street

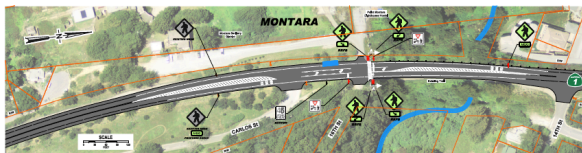
1. Alternative 1
2. Alternative 2





# 16<sup>th</sup> Street

1. Alternative 1
2. Alternative 2

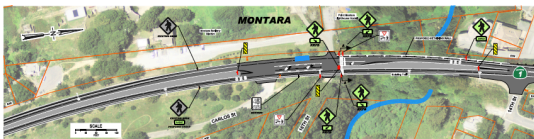


**RECTANGULAR RAPID FLASHING BEACON WITH PAINTED MEDIAN**



**LEGEND:**  
 ■ EXISTING STRIPING    ■ PROPOSED STRIPING    ⬡ EXISTING SIGNAGE  
 ■ EXISTING ROADWAY    ■ EXISTING BUS STOP    ⬡ PROPOSED SIGNAGE

**DESIGNATED PEDESTRIAN CROSSING  
16TH STREET - ALTERNATIVE 2**



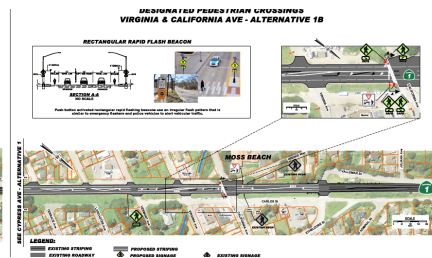
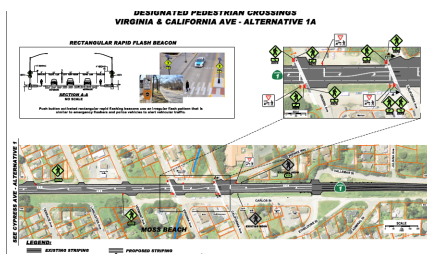
**RAISED MEDIAN WITH TYPE D CURB AND RAPID RECTANGULAR FLASHING BEACONS**



**LEGEND:**  
 ■ PROPOSED WEAVING    ■ PROPOSED STRIPING    ⬡ PROPOSED RAISED MEDIAN    ■ EXISTING BUS STOP  
 ■ EXISTING ROADWAY    ■ EXISTING STRIPING    ⬡ PROPOSED SIGNAGE    ⬡ EXISTING SIGNAGE

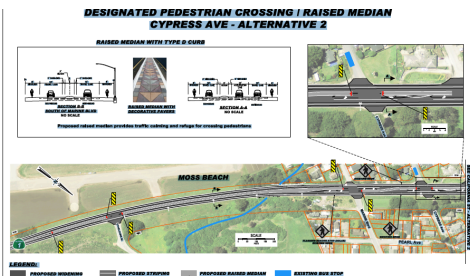
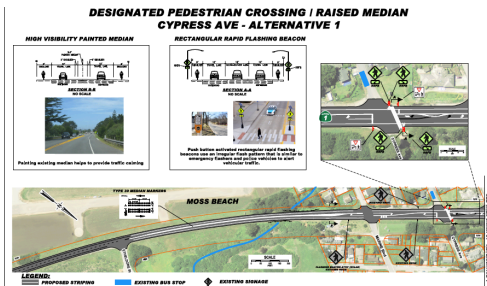
# California Ave

1. Alternative 1A
2. Alternative 1B
3. Alternative 2



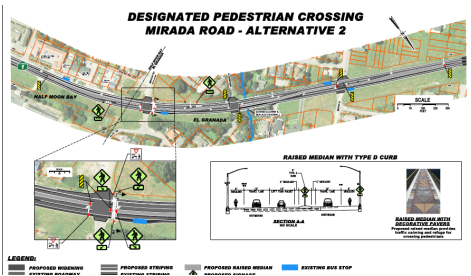
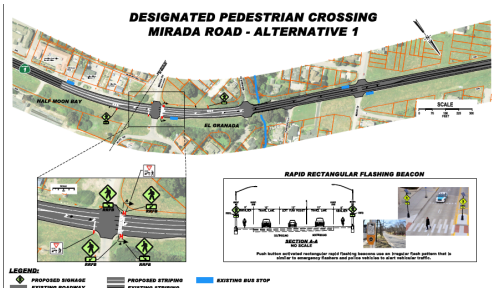
# Cypress & Etheldore

1. Alternative 1
2. Alternative 2



# Mirada Road

1. Alternative 1
2. Alternative 2



# Next Steps

- Consultant team and County to develop Final Planning Study with recommendations for improvements.
- Present preferred alternative to Planning Commission and Board of Supervisors summer 2015.
- Seek funding for preferred projects.
- Environmental review and design TBD

[www.SMCSpeakOut.com](http://www.SMCSpeakOut.com)

Thank You for Attending!

