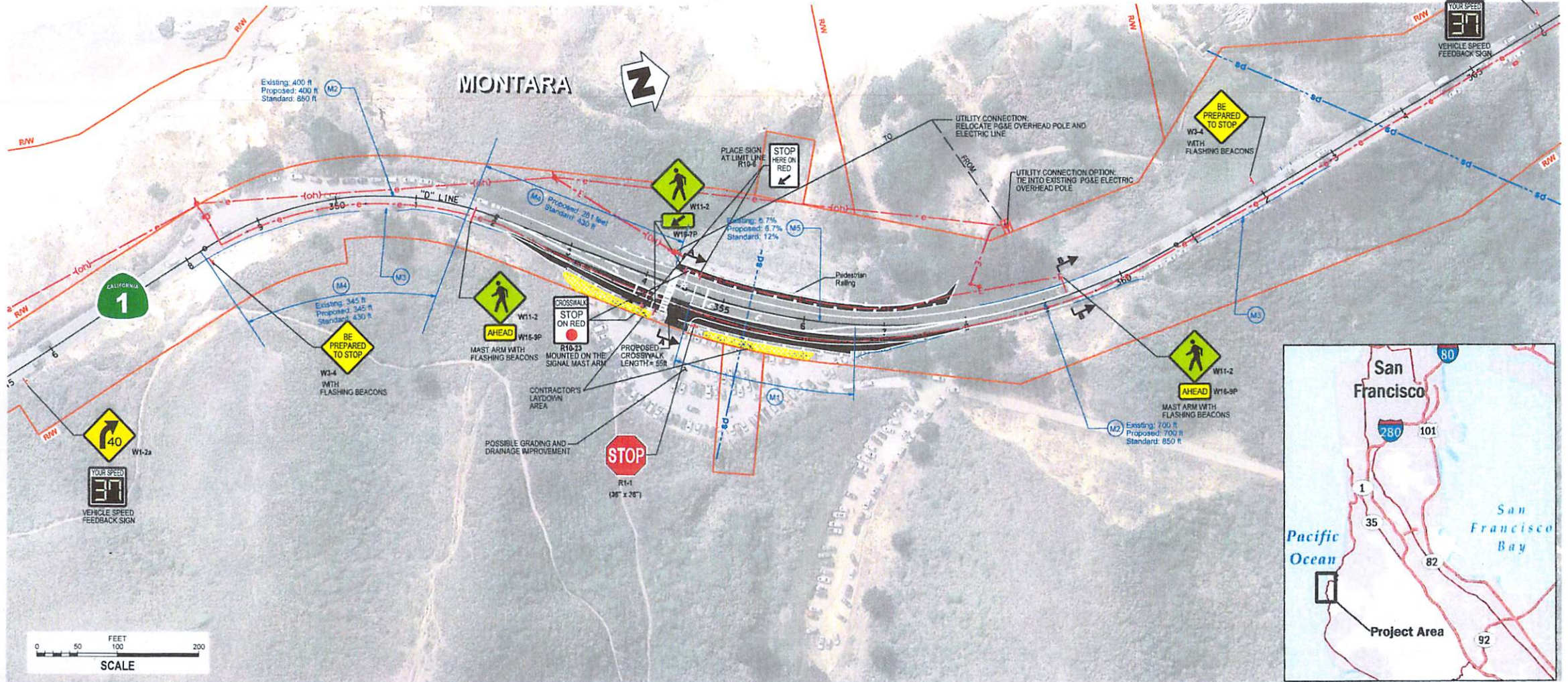


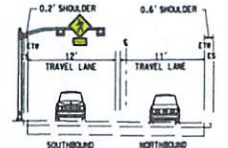
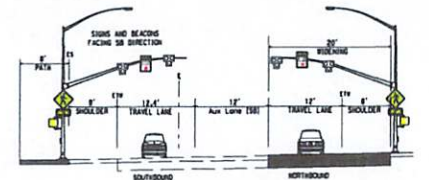
# GRAY WHALE COVE PEDESTRIAN ACCESS IMPROVEMENT PROJECT (PM 37.8/38.0) McNEE RANCH STATE PARK, HIGHWAY 1 ENVIRONMENTAL PHASE



**LEGEND:**

- PROPOSED WIDENING
- EXISTING ROADWAY
- PROPOSED STRIPING
- EXISTING STRIPING
- PROPOSED SIGNAGE
- EXISTING STORM DRAIN
- EXISTING PG&E UG ELECTRIC
- EXISTING PG&E OH ELECTRIC
- PROPOSED PG&E UG ELECTRIC
- PROPOSED PG&E OH ELECTRIC
- MANDATORY DESIGN EXCEPTION
- CONTRACTOR'S LAYDOWN AREA

PROPOSED DESIGN EXCEPTIONS	
DESIGN STANDARD	CONDITION
M1 Mandatory 405.2(d) Non Standard Deceleration Length Standard: 50 mph Design Speed = 435 feet	Existing: No Crosswalk Proposed: 224 ft Standard: 435 ft
M2 Mandatory 203.2 Non Standard Curve Radius Standard: 50 mph Design Speed = 850 feet	Existing: 400 ft Existing: 700 ft Proposed: 400 ft Proposed: 700 ft Standard: 850 ft Standard: 850 ft
M3 Mandatory 302.1 Non Standard Shoulder Width Standard: 8 foot Shoulder	Existing: Varies from 0.6 to 6.5 ft Proposed: Varies from 0.6 to 8 ft Standard: 8ft
M4 Mandatory 201.1 Non Standard Stopping Sight Distance Standard: 50 mph Design Speed = 430 feet	Existing: 345 ft Proposed: 261 ft Proposed: 400 ft Proposed: 430 ft Standard: 430 ft Standard: 430 ft
M5 Mandatory 202.2 Non Standard Superelevation Rate Standard: 12%	Existing: 6.7% 700 ft Proposed: 6.7% 700 ft Standard: 12%



**PRELIMINARY**  
FOR DISCUSSION PURPOSES ONLY

## DESIGNATED PEDESTRIAN CROSSING PEDESTRIAN HYBRID BEACON (PHB)

FIGURE 1