

# MIRADA ROAD PEDESTRIAN BRIDGE

## Midcoast Community Council Meeting

December 9, 2020



COUNTY OF SAN MATEO



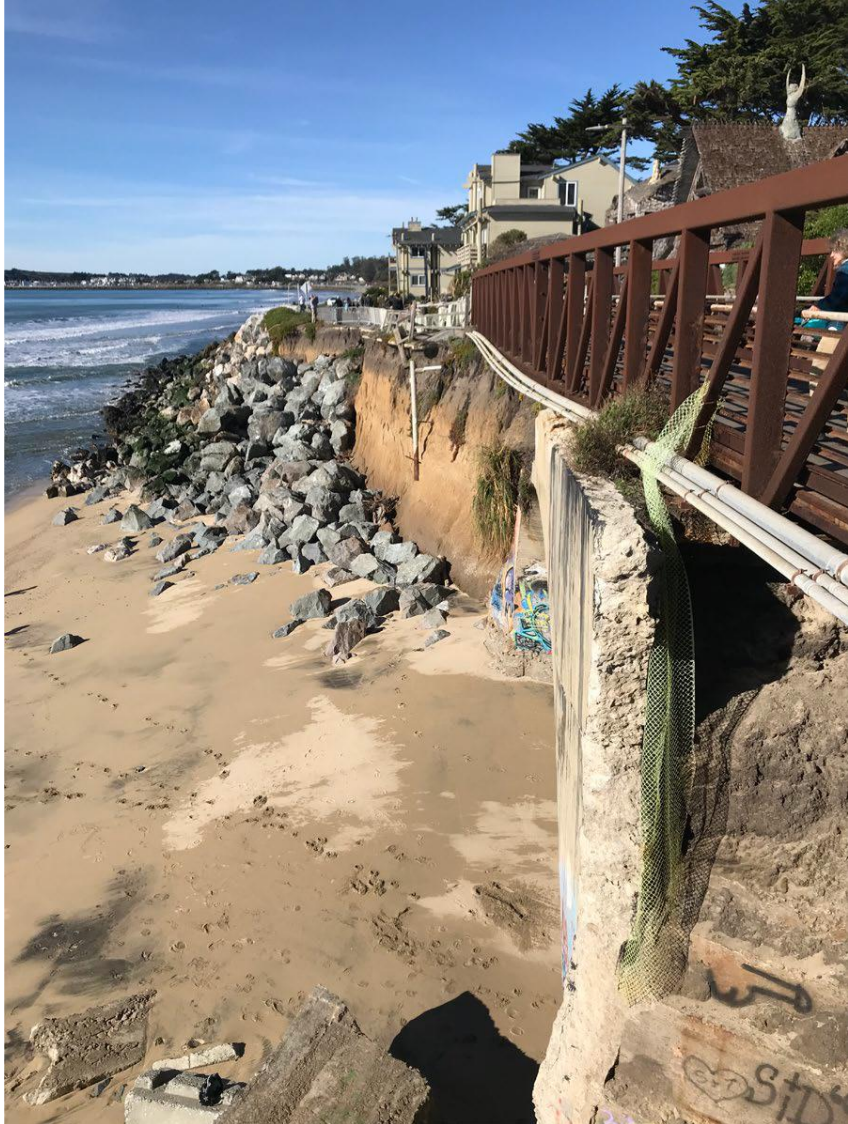
# *Mirada Road* **1972**



# *Mirada Ped. Bridge* Today



# Bluff Erosion



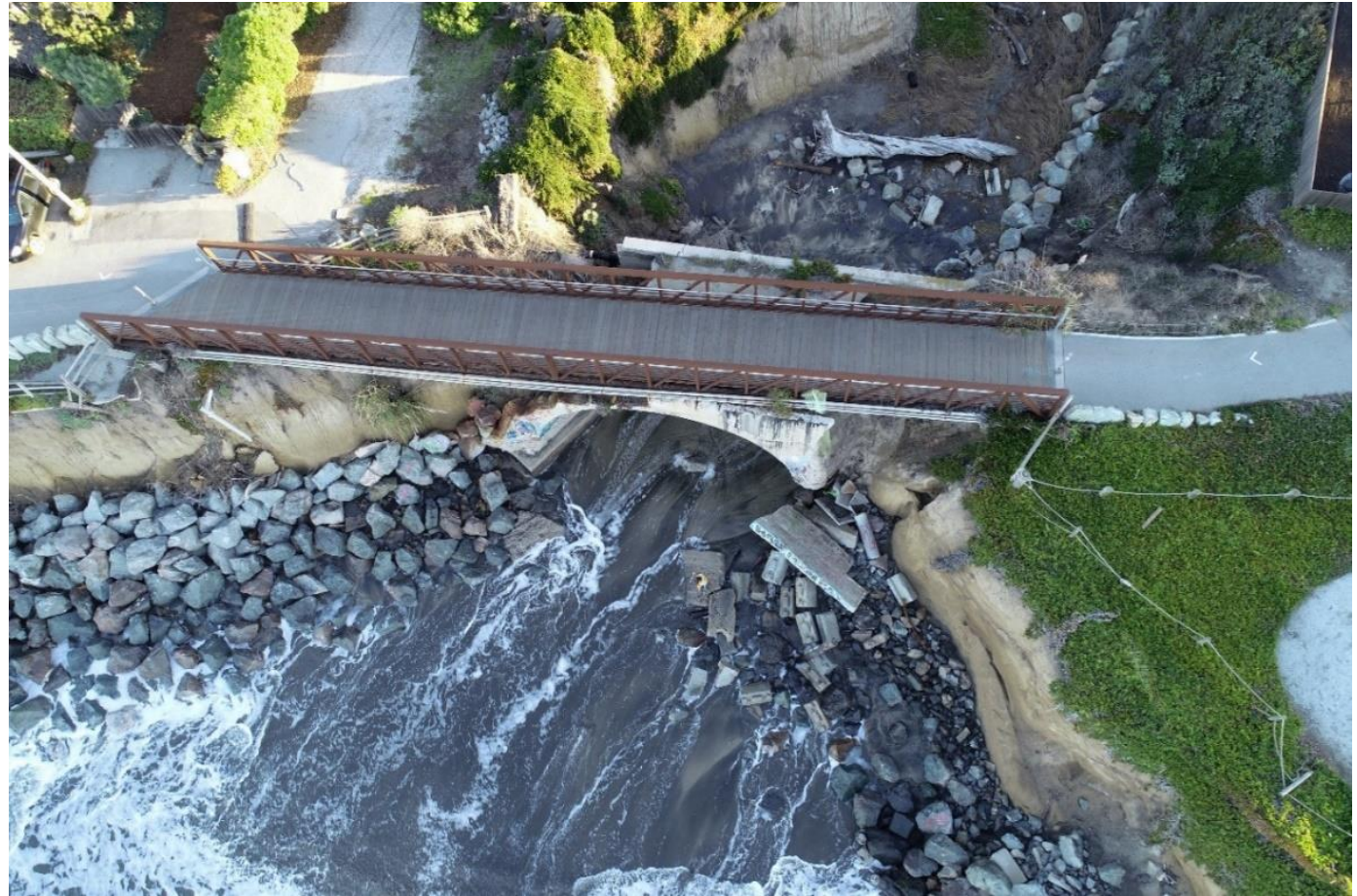
# Mirada *Popularity*

		Pedestrian		Bicycle	
Date	Day	Southbound	Northbound	Southbound	Northbound
6/29/2018	Friday	422	432	254	244
6/30/2018	Saturday	702	731	428	428
7/1/2018	Sunday	669	654	267	267



# *Mirada Services*

1. Coastal trail access for both recreation and commute.
2. Access to properties.
3. Electrical and sanitary sewer utilities.



# *Miramar* Seasonal Changes



December 15, 2018

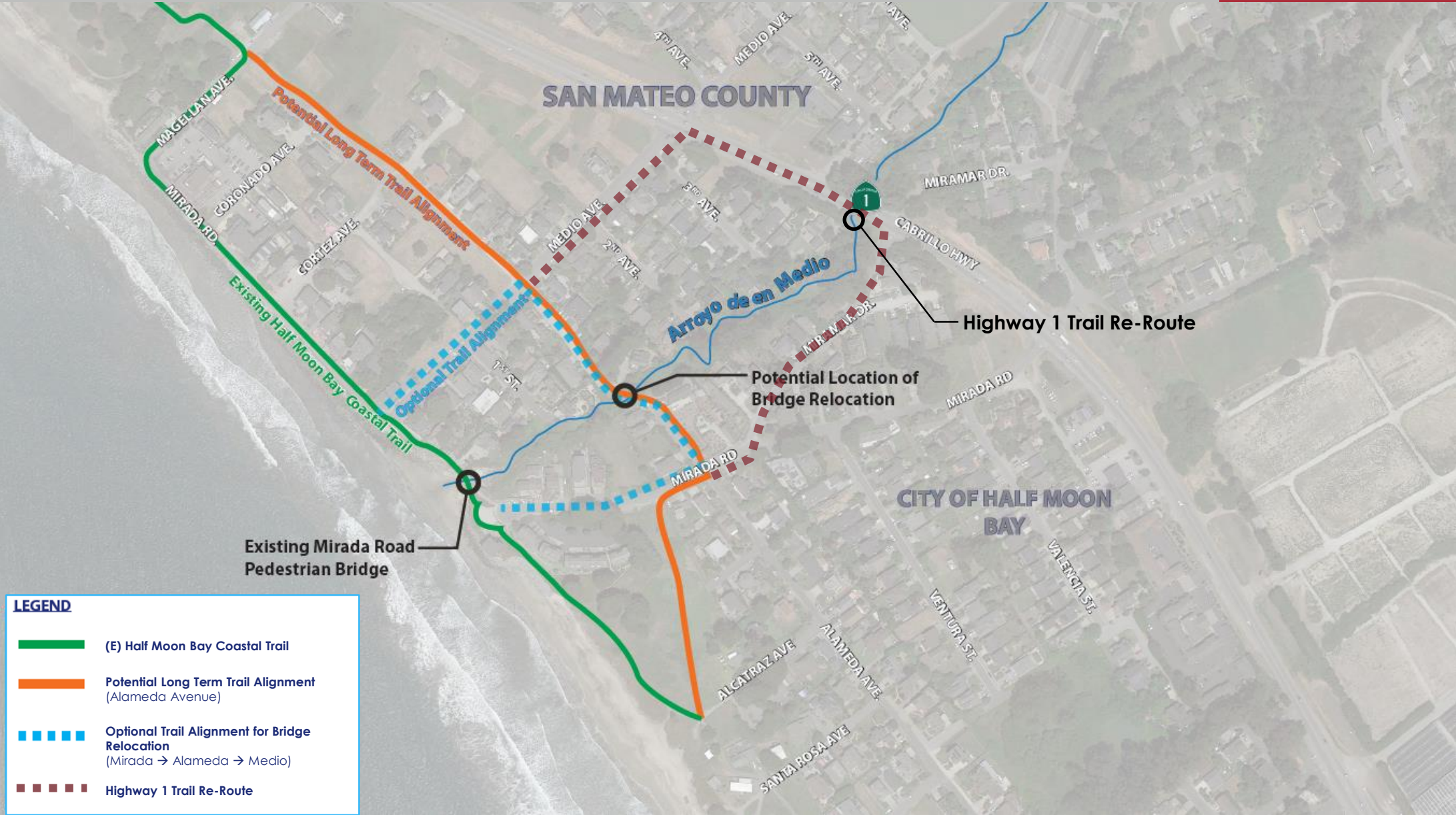


August 31, 2019



February 4, 2020

# Coastal Trail Alternatives



**LEGEND**

-  (E) Half Moon Bay Coastal Trail
-  Potential Long Term Trail Alignment (Alameda Avenue)
-  Optional Trail Alignment for Bridge Relocation (Mirada → Alameda → Medio)
-  Highway 1 Trail Re-Route



# *Crossing* **Alternatives**

---

1. No project.
2. Managed retreat relocating the pedestrian bridge east to Alameda Avenue.
3. Removing the bridge and providing seasonal access to cross the Arroyo de en Medio.
4. Re-route to Highway 1.
5. Replace the bridge in its current location.

# *Alt 1* **No Project**

## **Considerations**

- Eliminates a safe pathway for pedestrians and bicyclists travelling along the San Mateo Coast. This places a specific hardship on low-income commuters who use the bridge to travel to their places of employment;
- Sanitary sewer and electrical utilities would be damaged, potentially causing untreated sewage to flow into the ocean; and
- Creates a significant economic loss due to a reduction in tourism.

## **Cost**

\$1 million initial and potentially \$100,000 annually.

# Alt 2 Managed Retreat

## Considerations

- Shifts the trail east to Alameda Avenue reducing coastal access;
- Requires acquisition of private property;
- Changes the character of Alameda Avenue;
- Requires relocation of utility systems;
- May require considerable time to obtain approval to construct; and
- Long term solution.



## Cost

- Alternative 2a Basic Access \$2.7+ million
- Alternative 2b Facility \$3.7+ million  
(no right of way costs included)

# Alt 2a Managed Retreat





# *Alt 3* Seasonal Access

## **Considerations**

- Provides access when sand levels are high and wave height low from approximately June until October;
- Requires relocation of utility systems;
- Requires up to 50 stairs and thus not accessible to those with physical disabilities; and
- Provides great beach access.

## **Cost**

About \$500,000

# Alt 3 Seasonal Access



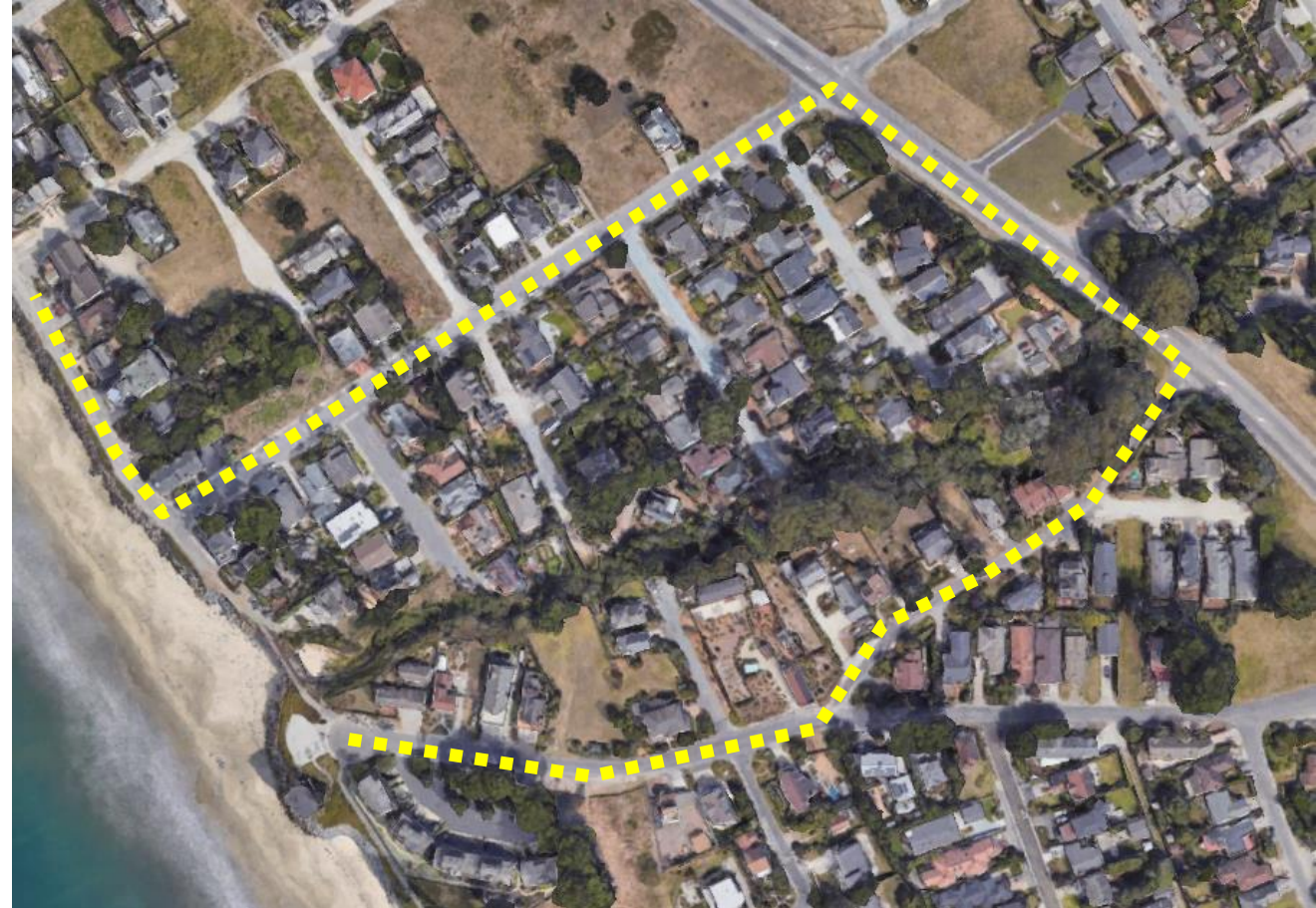
# Alt 4 Highway 1

## Considerations

- Pathway similar to current bypass route;
- Requires modifications to existing streets to achieve Class 1 pathway;
- Requires a new ped bridge across the creek next to Highway 1/culvert crossing; and
- Major diversion from the coastline.

## Cost

\$3 million +/-





# Alt 4 Highway 1



# *Alt 5* **Replace Bridge**

## **Considerations**

- Re-uses the existing pedestrian bridge's foundations;
- Aluminum bridge provides a 75+ years of service life;
- Bluff stabilization provides 40+ years of service life. The limiting factor is sea level rise. The stabilization protects Mirada Road, utility systems, and the coastal trail for the foreseeable future.
- Returns the Coastal Trail to service by 2021.

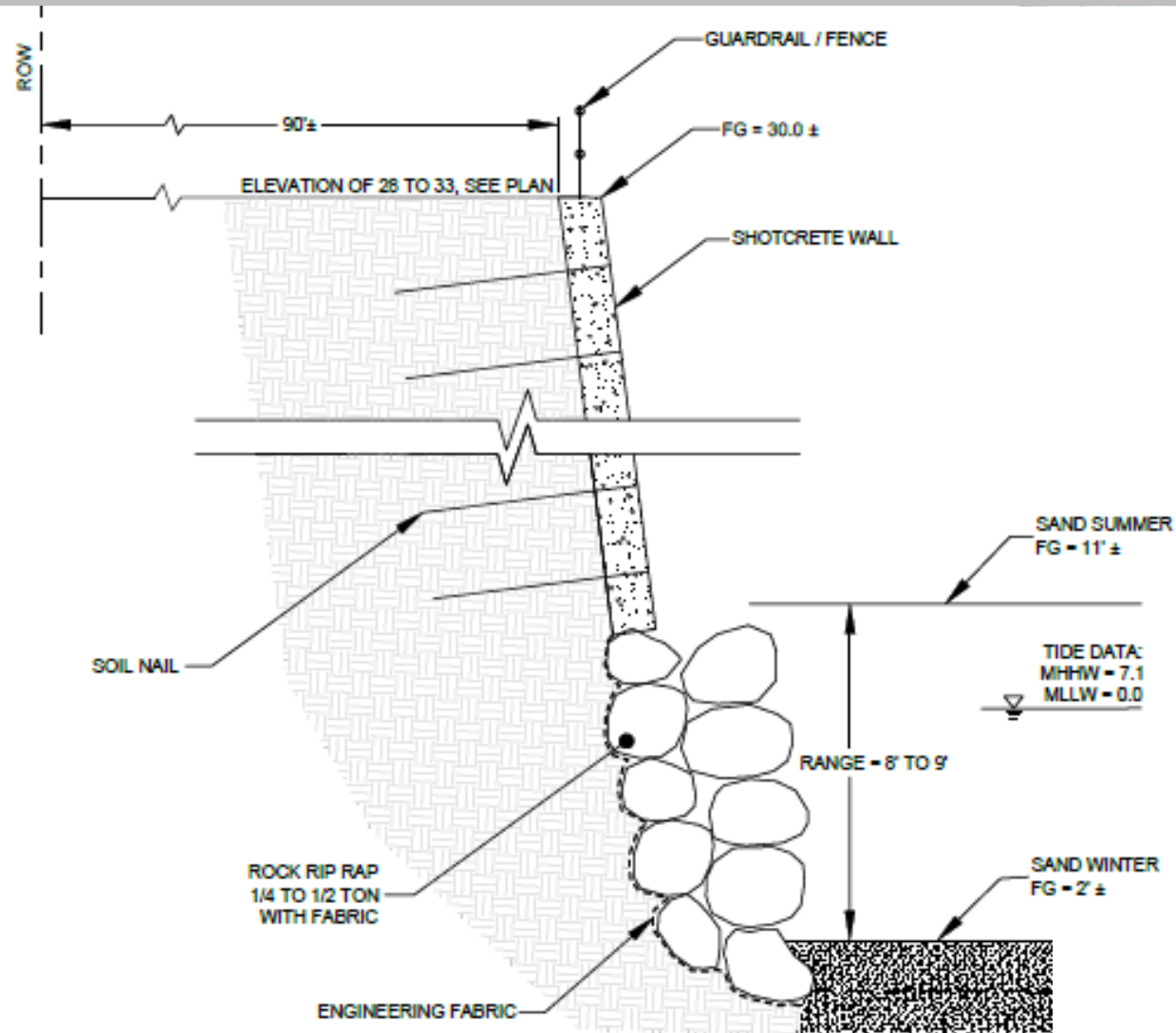
## **Cost**

\$900,000 for the bridge and \$1.8 million for the bluff stabilization

# Alt 5 Replace Bridge



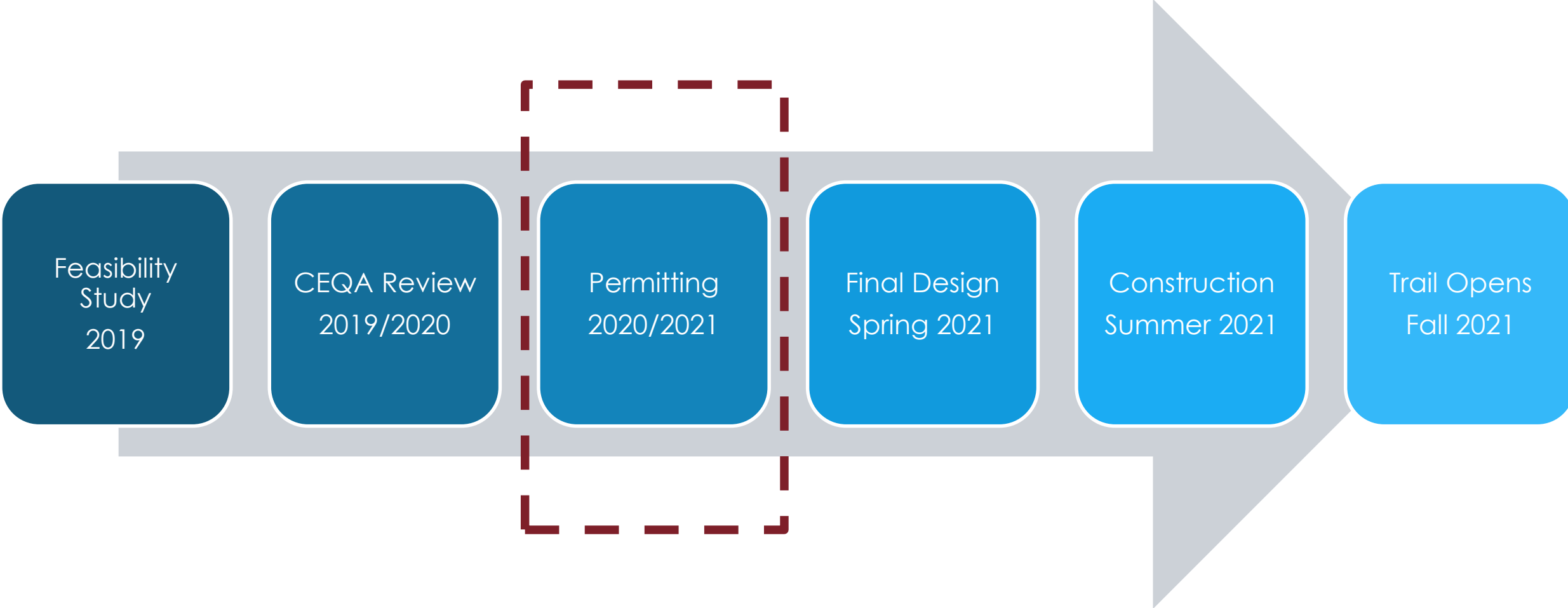
# Alt 5 Bluff Stabilization



Rendering illustrates typical conditions in late fall / early winter or late spring / early summer



# Project *Schedule*



# MIRADA ROAD PEDESTRIAN BRIDGE

December 9, 2020



COUNTY OF SAN MATEO



# Thank you

## Questions, Comments, and Input

### Contact:

Wency Ng  
[wng@smcgov.org](mailto:wng@smcgov.org)  
650-363-4100

Alex Zhang  
[azhang@smcgov.org](mailto:azhang@smcgov.org)  
650-363-4100

**COUNTY** OF **SAN MATEO**

