

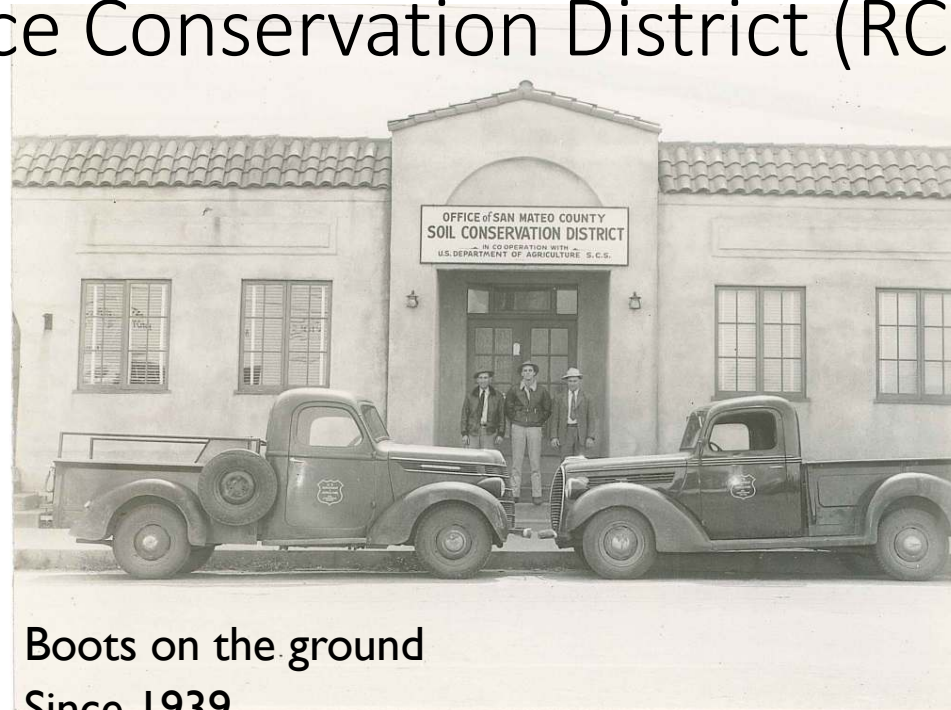
Community Fire Resiliency

Midcoast Community Council
Study Session on Fire
October 14, 2020



SAN MATEO
RESOURCE CONSERVATION DISTRICT

San Mateo Resource Conservation District (RCD)



Boots on the ground

Since 1939

With USDA Natural Resources Conservation Service



Water



Climate



Wildlife



Agriculture

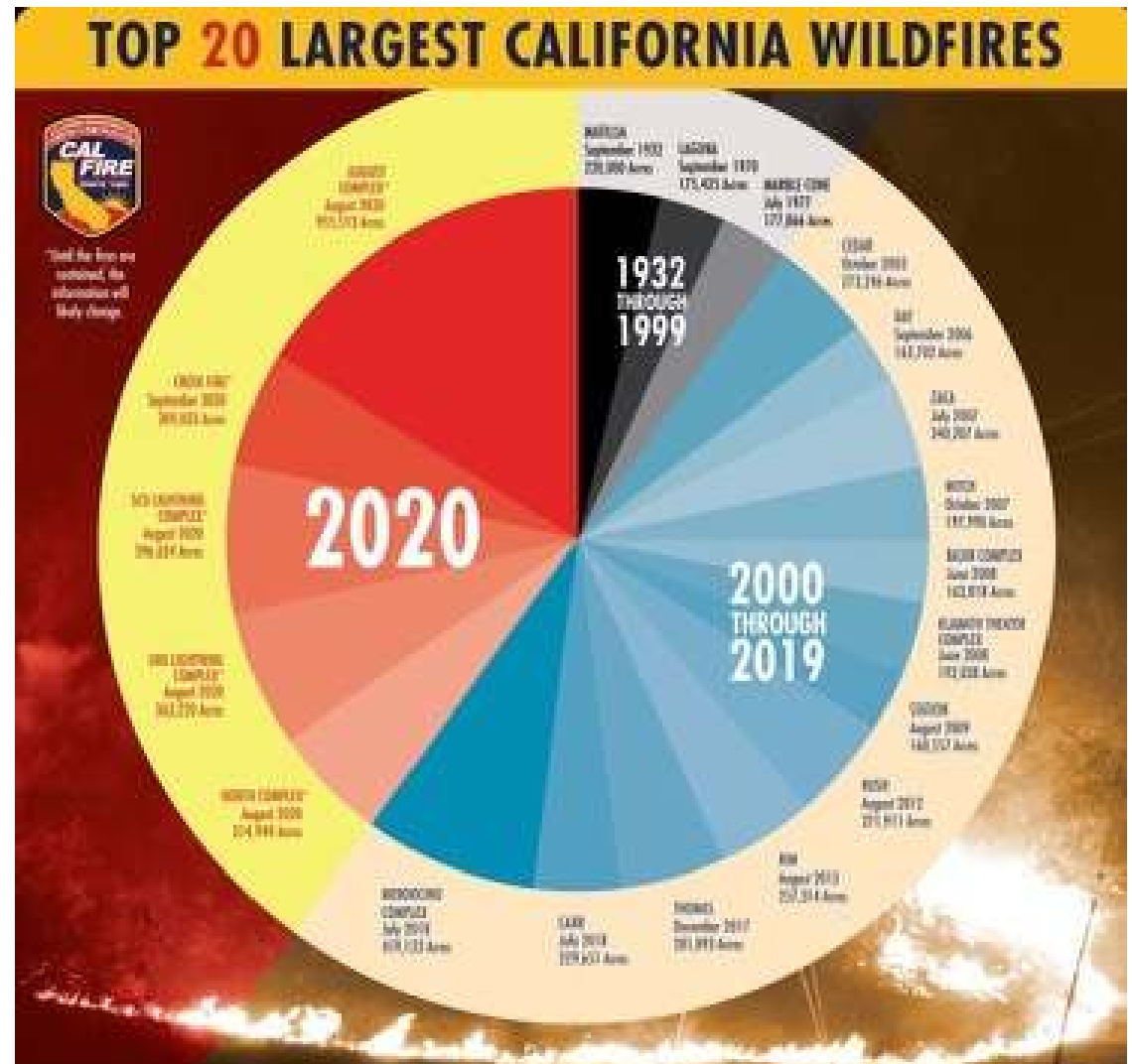


Forest Health & Fire Resilience



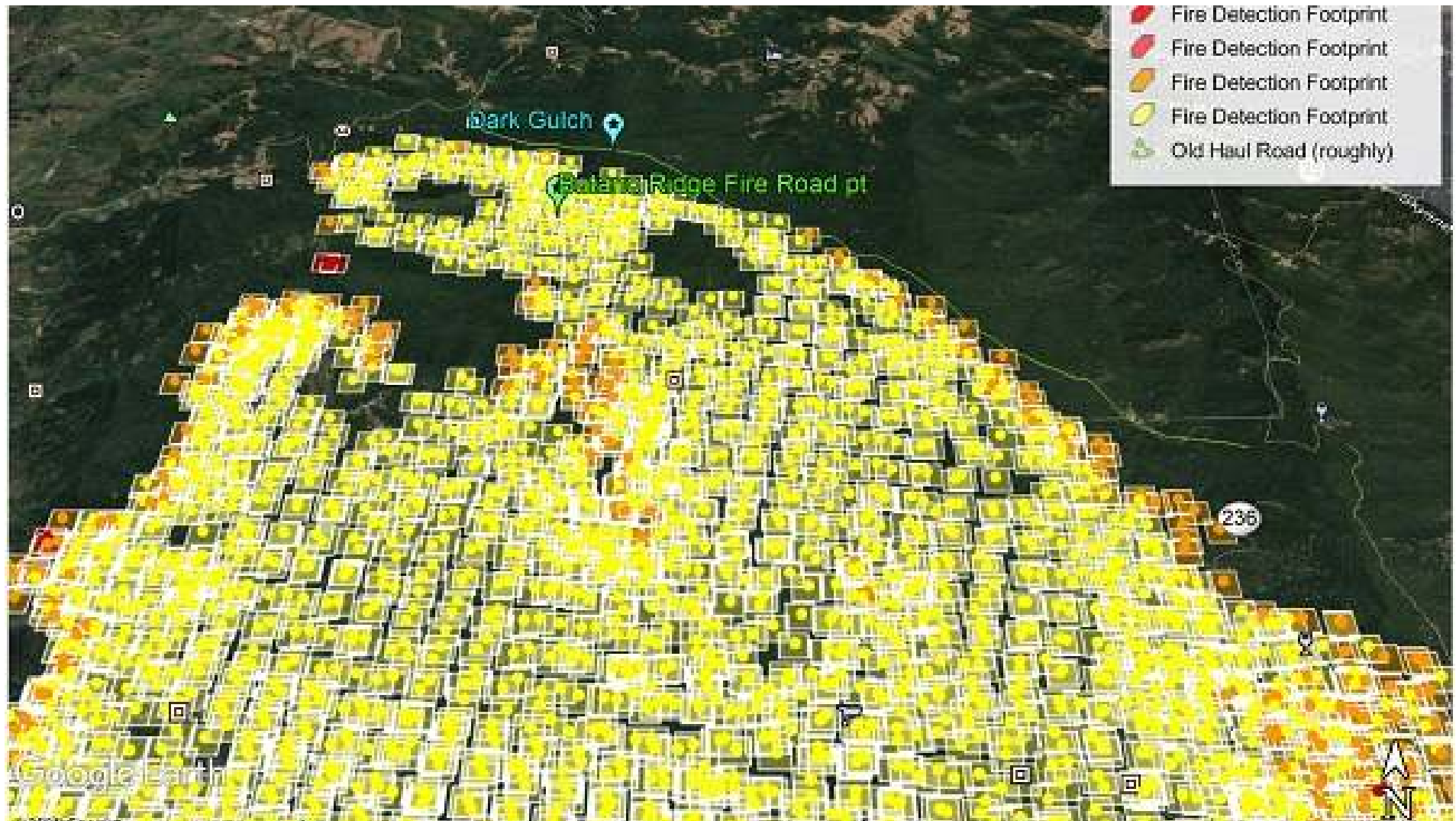
Presentation Outline

- Response
- Recovery
- Resilience



A photograph of a forest showing the aftermath of a fire. The ground is covered in ash and charred tree trunks. Many trees are dead, with brown, brittle branches and needles. A few evergreen trees remain, their needles also appearing brown and dead. The word "Response" is overlaid in large, white, sans-serif font in the center of the image.

Response





Recovery





PROTECTING YOUR LAND AFTER A WILDFIRE



This **FREE** online series will provide residents with an understanding of the short and long-term effects of wildfire on the landscape and best practices for aiding the recovery process.

POST-FIRE RESTORATION: WHAT WORKS & WHAT'S A WASTE OF TIME

SATURDAY, SEPTEMBER 12 - 10:00 AM TO 11:00 AM

Rich Casale, Certified Professional in Erosion and Sediment Control and Post Fire Restoration Specialist, Retired NRCS

UNDERSTANDING FOREST REGENERATION & HAZARD TREE MANAGEMENT

TUESDAY, SEPTEMBER 15 - 6:00 PM TO 7:00 PM

Steve Auten, Registered Professional Forester, ARC - Auten Resource Consulting

MANAGING DRAINAGE & EROSION ON PRIVATE PROPERTY & ROADS AFTER FIRE

SATURDAY, SEPTEMBER 19 - 10:00 AM TO 11:00 AM

Matt Weld, Register Professional Engineer, CFM & CPESC, Waterways Consulting Inc.

PREPARING FOR POST-FIRE CHANGES ALONG STREAMS & WATERWAYS

TUESDAY, SEPTEMBER 22 - 6:00 PM TO 7:00 PM

Kristen Kittleson, Fisheries Resource Planner, County of Santa Cruz

RSVP required | www.rcdsantacruz.org

For more information call Angie Gruys at 831.419.8710

Open to residents of Santa Cruz and San Mateo Counties

Resilience





Resilience Efforts

- Chipping
- Permitting
- Forest Health Projects
- Regional collaboration and coordination

Chipping



2020 Fire Season is NOT Over Yet

You Cut and Stack, We'll Do the Rest!

Getting Started

- ✓ Defend your home from wildfire by creating defensible space.
- ✓ Check to make sure your street is included in this chipping event. <https://FireSafeSanMateo.org>
- ✓ Clear brush and small trees from around your home.
- ✓ Pile vegetation on the curbside and we'll do the rest!



What's Acceptable

- ✓ Branches, limbs and other woody vegetation up to 8" in diameter.
- ✓ The chipper program is designed for residential use only. NO Commercial use
- ✓ NO construction or building materials. Must be free of wire and nails.
- ✓ No poison oak, vines, grass clippings or bags of leaves.
- ✓ No trash, weeds, rocks, concrete, etc.
- ✓ Piles only, no bags.

October 26 - 27 Selected Streets for El Granada:

- El Granada Blvd (including side streets),
- Dunn Rd,
- Columbus Ave (between Isabella Rd and Santa Maria Ave),
- Del Monte Rd (between Avenue Portola and San Pedro Rd),
- Dolores St,
- Avenue Balboa (between Valencia Ave and Montecito Ave).



For more information, please contact the San Mateo Fire Safe Council.
650-712-7765 x 115 or fire@sanmateoRCD.org
web: <https://FireSafeSanMateo.org>

This service is provided free of charge to area residents by San Mateo County through Measure K funds. Donations are accepted.

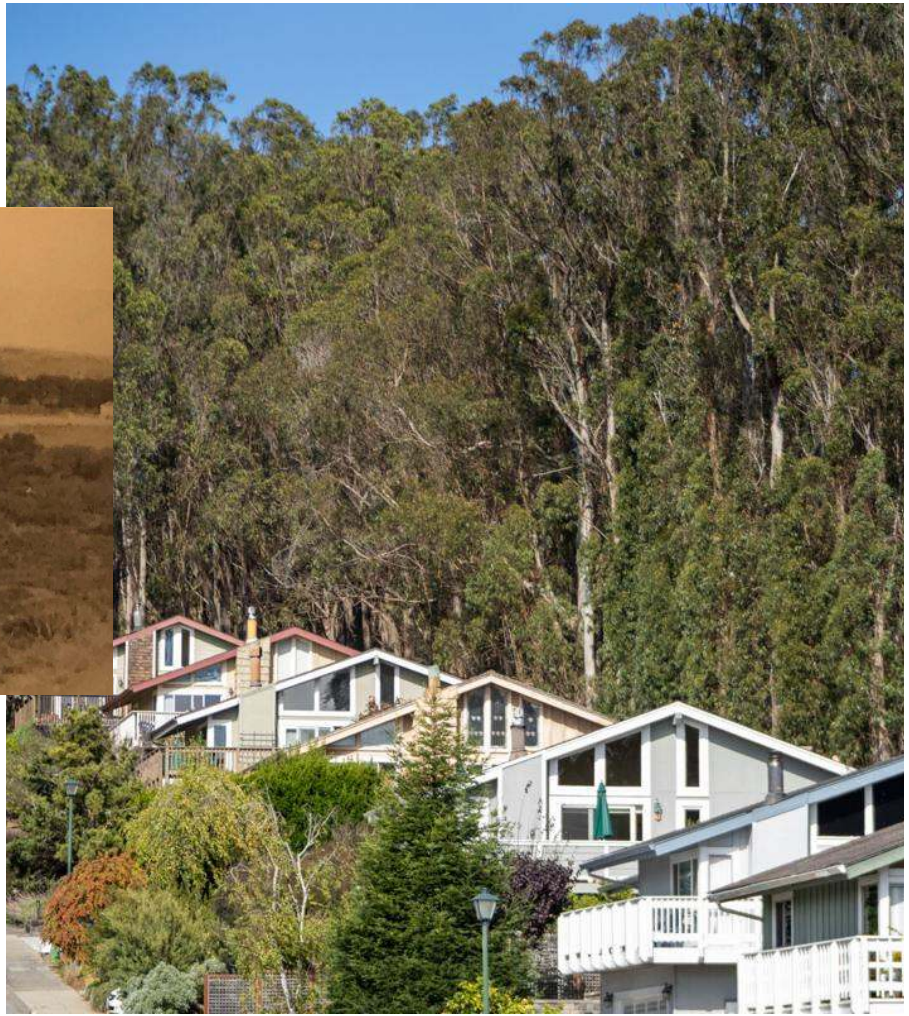
Permitting

- Addressing Regulatory Obstacles to Eucalyptus Control in San Mateo County (2011)
- Programmatic and streamlined permitting






Forest Health



A large orange shape on the left side of the slide, consisting of a vertical rectangle on the left and a quarter-circle on the right. The text "Collaboration and Coordination" is written in white inside this shape.

Collaboration and Coordination

- SMC FireSafe Council (Join us!)
 - Coastal Regional Prioritization Group of the Governor's Forest Management Task Force
 - Community Wildfire Prevention Plan (2008, 2018)
 - County commitment: \$475K to date
 - Grant funds: \$2.9M to date (CalFire, CA FireSafe Council, CA Coastal Conservancy, USDA)
 - Partnering with large landowners (County Parks, POST, SFPUC, State Parks, Open Space District, others, and more in development)
 - *Residents and private landowners*
- 
- A decorative yellow dashed line in the bottom right corner of the slide, consisting of several curved segments.



Thank you! Questions?

Sheena Sidhu, PhD

Conservation Program Manager, Forest Health & Fire Resiliency

sheena@sanmateoRCD.org

Visit us online:

Website | sanmateoRCD.org

Facebook | facebook.com/sanmateoRCD

Instagram | instagram.com/sanmateoRCD

YouTube | [San Mateo RCD](https://www.youtube.com/SanMateoRCD)