

Mirada Road Coastal Trail Bridge Replacement

Review bridge design, related armoring, and alignment alternatives considered by DPW for the Coastal Development Permit application to the Coastal Commission.

Desired Outcome:

Determine whether MCC should submit comment on this project.

Midcoast Community Council
October 14, 2020

Miramar Coastal Trail on the edge of an eroding shoreline

Mirada Rd Coastal Trail Bridge

closed July 2020 --
failed steel bridge on top of
failed concrete bridge
at Arroyo de en Medio Creek

Armored pre-Coastal-Act
apartments built along the
shoreline, now on a peninsula
out over the beach.



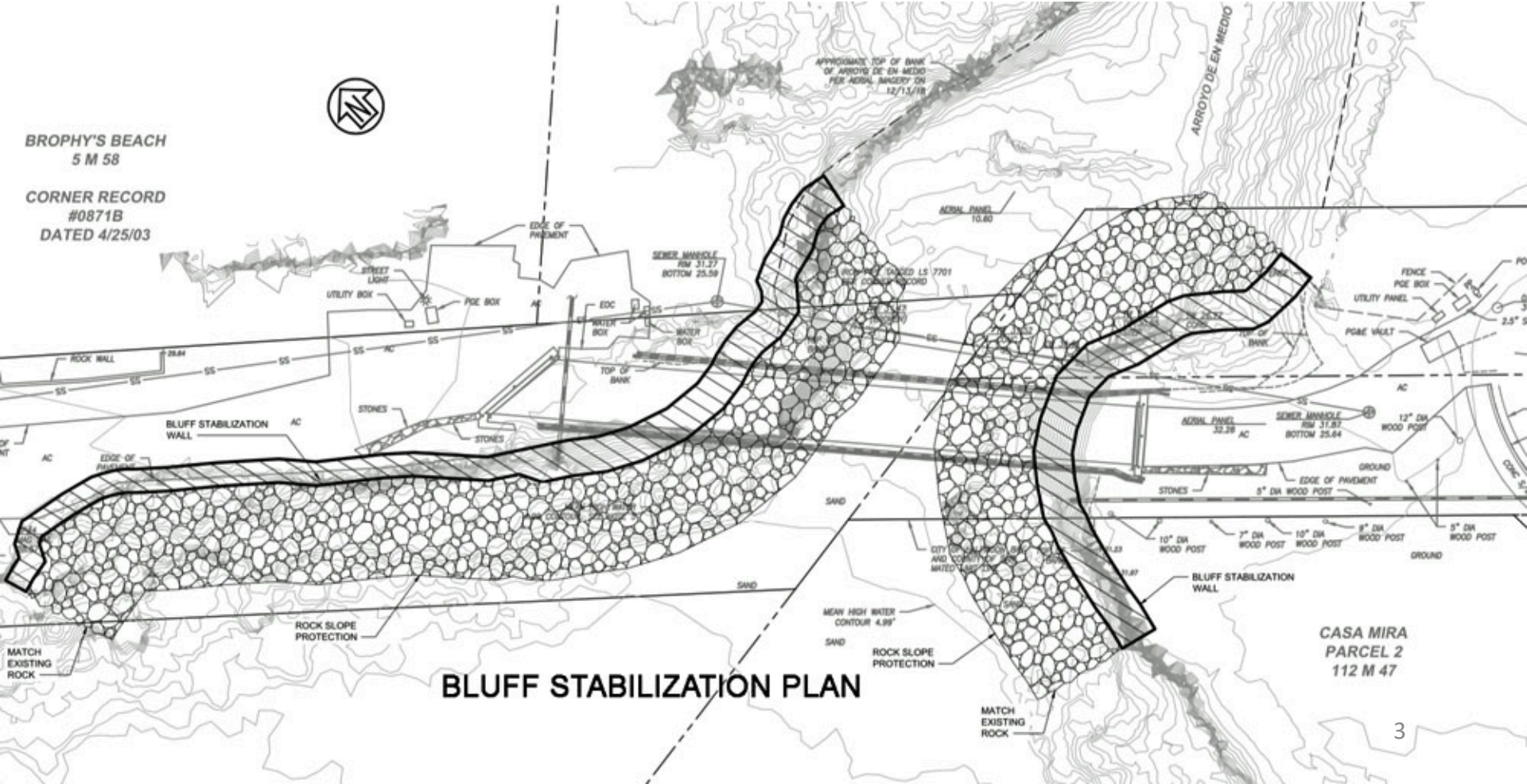
County proposes aluminum
replacement bridge and
armoring to wrap both sides
of the mouth of the arroyo,
connecting to existing shoreline riprap.

Coastal Commission has open
enforcement action on
unpermitted riprap
along the private parking lot.

Coastal Commission won't allow
armoring to protect the
Coastal Trail – must reroute inland.

6/3/20 CDP application by Dept of Public Works to Coastal Commission:

- 120-ft long single-span aluminum bridge with hybrid armoring consisting of
- shotcrete seawalls with tieback anchors, and
- rock slope protection along both banks of Arroyo de en Medio.





Alignment Alternatives

Red arrows:

Mirada Rd Coastal Trail Bridge closed
at Arroyo de en Medio Creek

Coastal Trail threatened by erosion at Casa Mira condos – Coastal Commission prefers re-routing the trail to armoring the shoreline.

Yellow arrows: Alternate route for Coastal Trail via State Parks land, and Alameda Ave, with new inland bike/ped bridge over Medio Creek.

Next Steps:

- Should MCC submit comments on this project?
- What are key points to include in draft letter?

Background & project documents:

<http://www.midcoastcommunitycouncil.org/mirada-rd/>