

# Parallel Trail

(Midcoast Multi-Modal Trail)

Midcoast Community Council  
September 23, 3015

# Project Origins

- Highway 1 Safety and Mobility Improvement Study, Phase 1



## Highway 1 Safety and Mobility Improvement Study

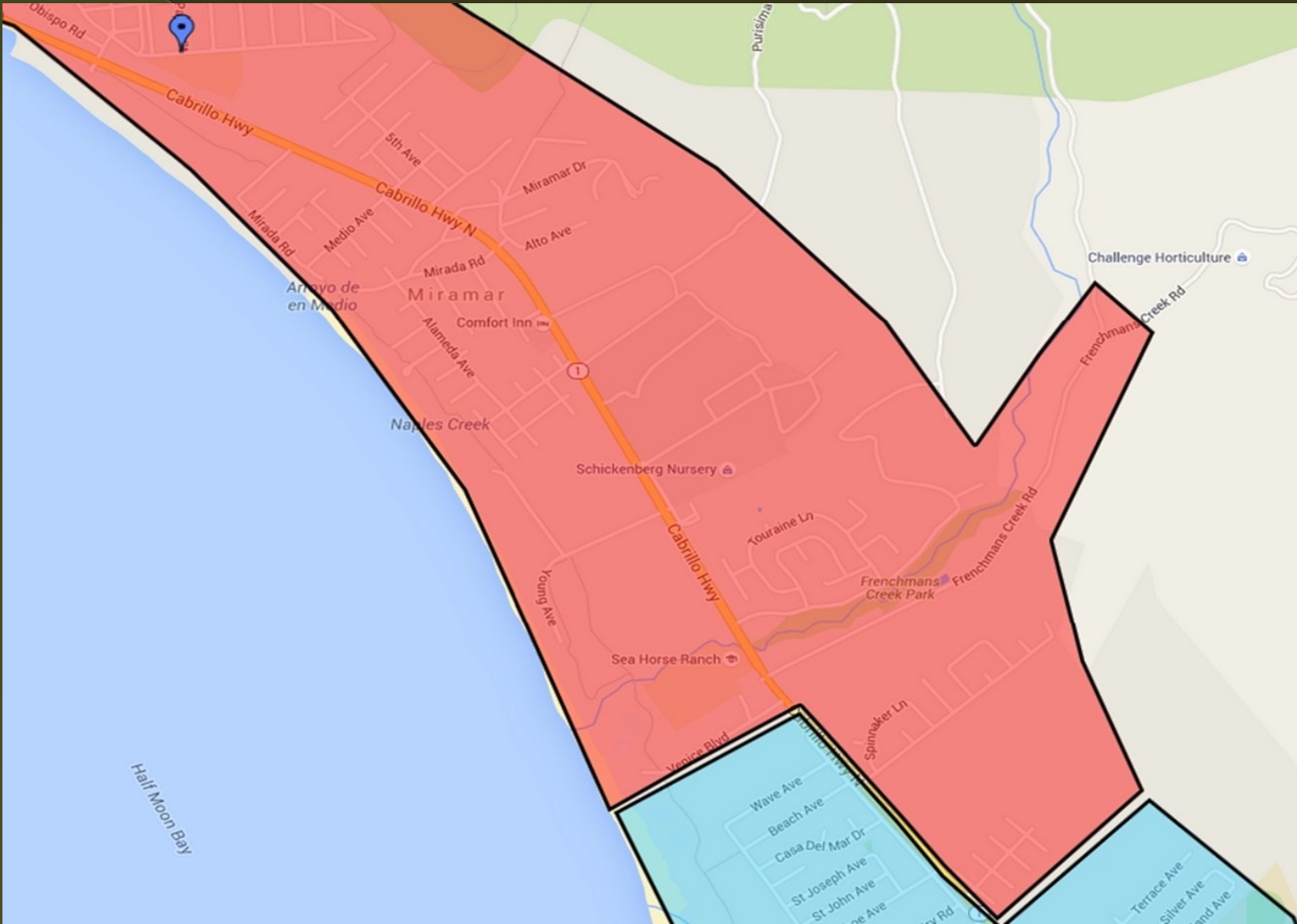
San Mateo County Midcoast Communities: Princeton, El Granada and Miramar, CA



April 2010

Prepared By  
Local Government Commission  
Glattig Jackson/Walkable Communities  
Opticos Design, Inc.  
Kirtelson and Associates, Inc.

# El Granada Elementary Attendance Boundaries



# Purpose of Project

- Continuous, regional bicycle and pedestrian commuter trail for all ages and abilities
- Safe Route to School
- Safe access to neighboring communities, town centers and recreational destinations without having to drive or travel on Highway 1
- Provide alternative means of transportation to mitigate highway congestion

# Alternatives



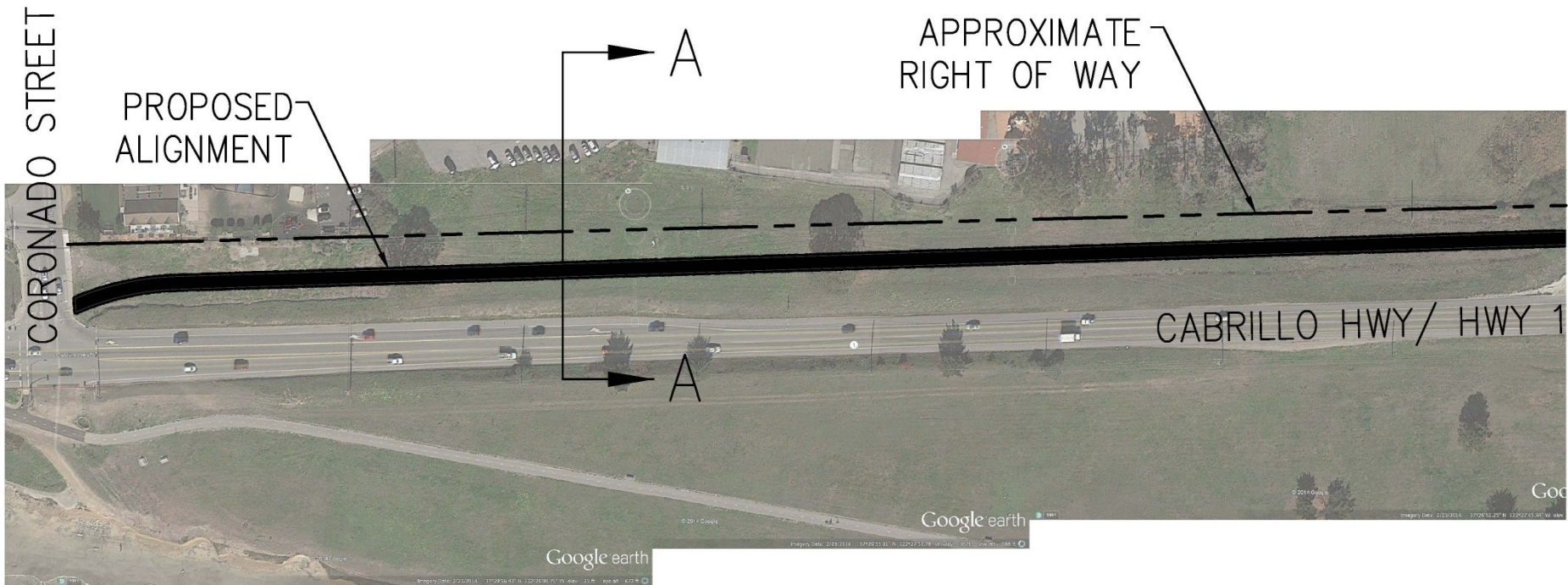
# Alternative 1 (Preferred Alternative)

- Opportunities
  - > Direct route to El Granada Elementary School
  - > No highway crossings needed
  - > Most direct route
  - > Entirely within state highway system right-of-way
    - Not likely required to purchase private property
  - > Identified as the preferred route by the community in prior studies
- Constraints
  - > Impacts to environmentally sensitive areas
  - > Crossing of Arroyo de Medio
  - > Conflicts with driveway and residential roads
  - > Potential impact with cultural resources

# Trail Features

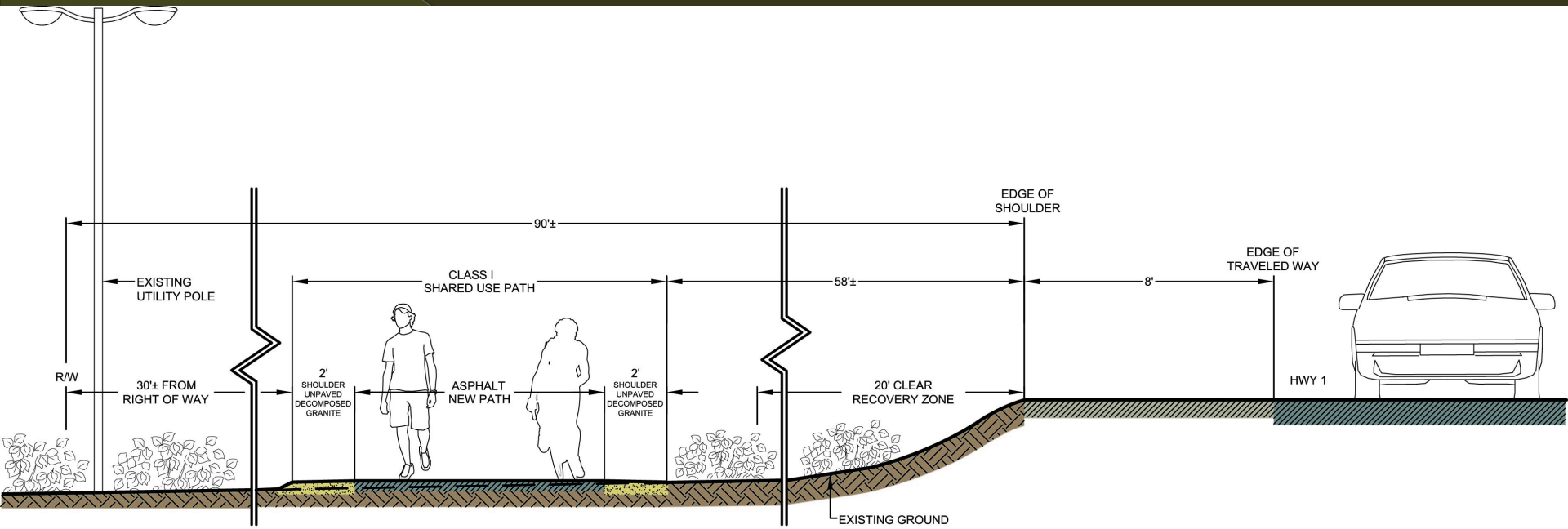
- Trail width
  - › CalTrans minimum standard (8 ft. width and 2 ft. shoulder) or larger?
- Trail Surface
- Safety Features
  - › Lighting, sight distance, proximity to highway

# Alternative 1 (Segment A)





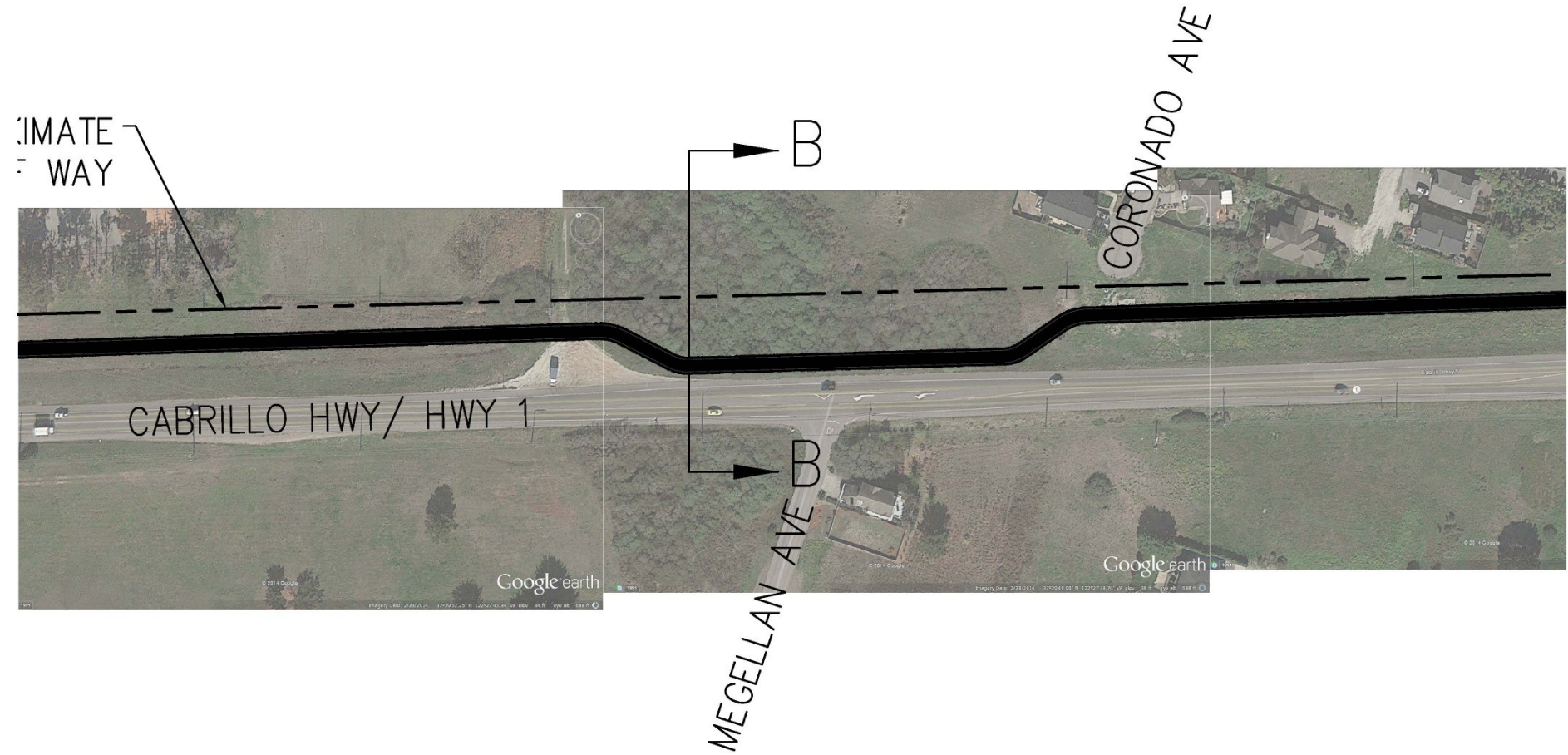
# Alternative 1 (Segment A)



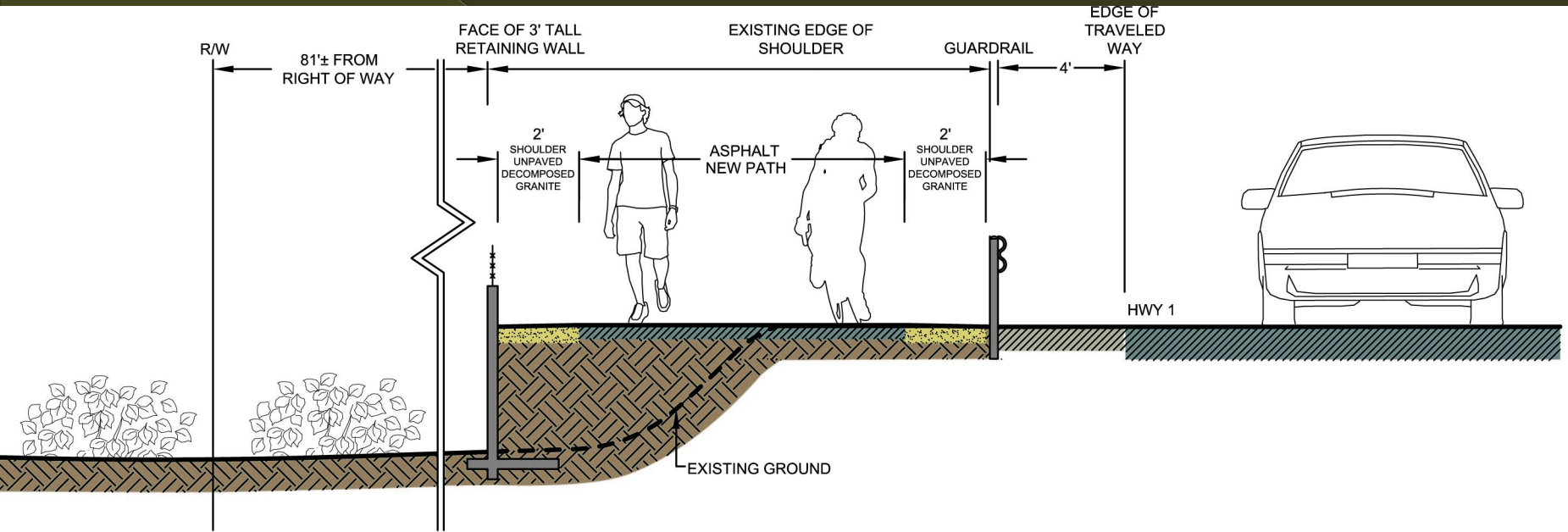
SECTION A-A

NTS

# Alternative 1 (Segment B)



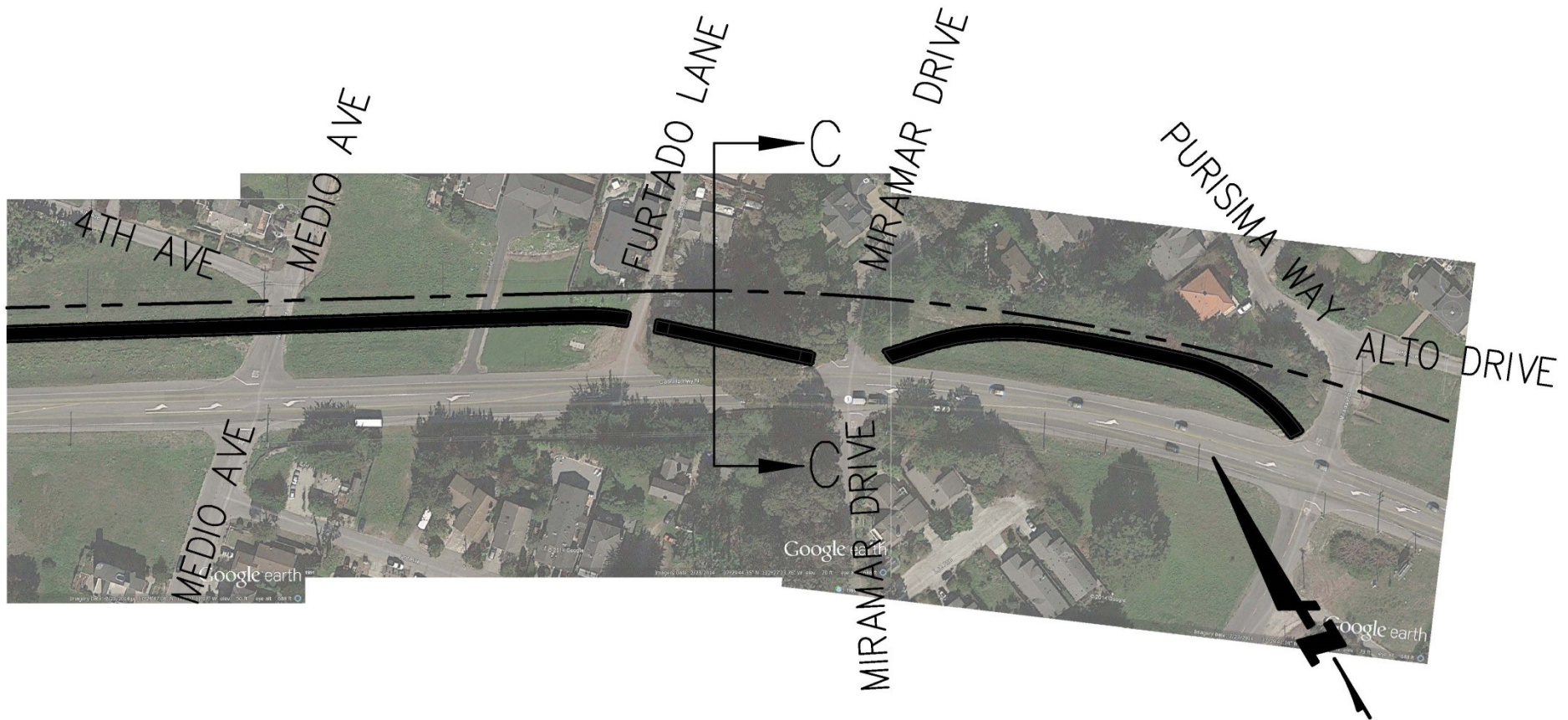
# Alternative 1 (Segment B)



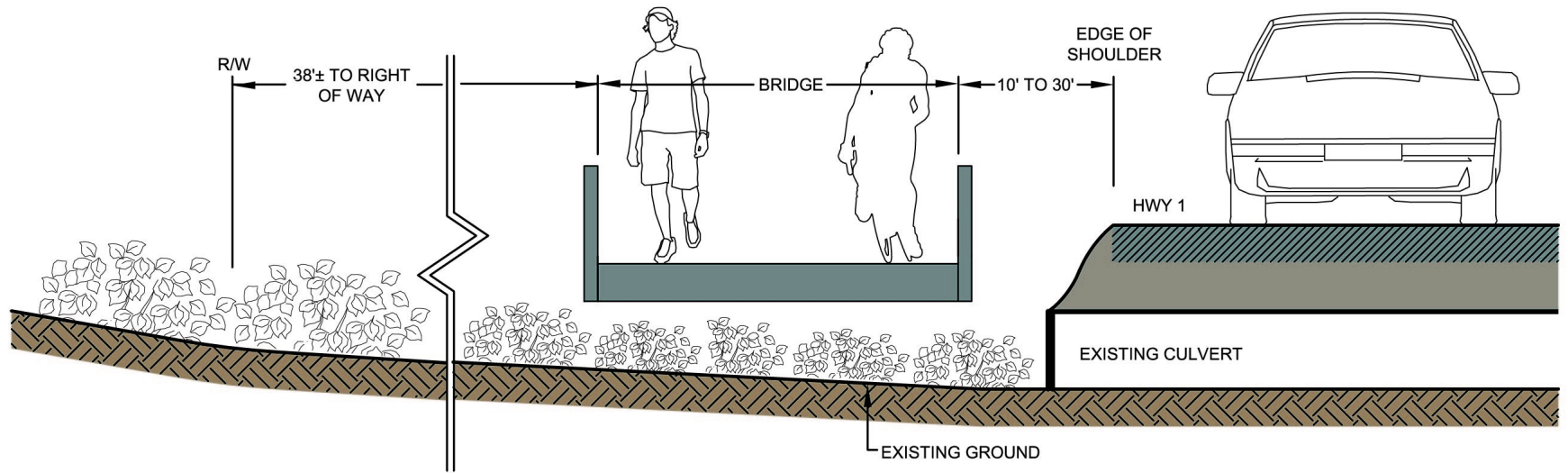
SECTION B-B

NTS

# Alternative 1 (Segment C)



# Alternative 1 (Segment C)



SECTION C-C

NTS

# Next Steps

2015	
1. Phase 1 Kick-Off Meeting	July 2
1. Site Visit	July 30
1. Introductory Public Meeting (Workshop #1) to receive early feedback and to identify preferred trail details (width, material, lighting, etc.)	Sept. 23, 2015
1. Pre-Project Meetings with Regulatory Analysis	Late August/early September
1. Initiate CEQA Analysis – Initial Study (IS) including Regulatory Review, Cultural Review and Transportation Review of Preferred Alternative (Alternative 1)	Mid-September
1. Need to request grant extension from TA	October 2, 2015
1. Deliver 30% PS&E	November
1. Present Final Analysis & PS&E: - Park and Rec Commission - MCC - Planning Commission	December
2016	
1. Submit IS/MND for Public Review: - Present IS/MND @ Parks and Rec Commission - Present IS/MND @ MCC - Present IS/MND @ Planning Commission	January

Questions?





# Features

- Trail width
  - > 10 feet with 2 foot shoulders on each side
    - ▣ 5 foot wide travel lanes
- Trail Surface
  - > Asphalt
    - ▣ Will preserve a surface easy for people to push strollers, wheelchairs; children to rollerblade and ride scooters
    - ▣ Mirada West, Coastal Trail, Naomi Patridge Trail
- Safety Features
  - > Lighting, sight distance, proximity to highway

# Alternative 2

- Opportunities

- > Easily accessed by residential neighborhoods
- > No highway crossings needed
- > Direct route to El Granada Elementary School
- > Most of the trail infrastructure already exists

- Conflicts

- > Not a direct route
- > Impacts to wetlands and willows
- > Conflicts with vehicular traffic
- > Potential impact to cultural resources

# Alternative 3

- Opportunities
  - > Trail placement away from highway
  - > Mirada West provides existing infrastructure for the trail
- Constraints
  - > Located west of Highway 1 creating a need for highway crossings
  - > Potential impacts to cultural resources
  - > Conflicts with vehicular traffic

# Environmental Review

- The Preferred Alternative will be evaluated as a “project” under the California Environmental Quality Act (CEQA) per Public Resources Code (PRC) §21065.
- CEQA Applies to a “Project”:
- A “Project” is an activity which may cause a direct or reasonably foreseeable indirect physical change in the environment, and which is any of the following:
  - An activity directly undertaken by any public agency
  - An activity undertaken by a person which is supported, in whole or in part, through contracts, grants, subsidies, loans or other forms of assistance from one or more public agencies,
  - An activity that involves the issuance to a person of a lease, permit, license, certificate or other entitlement for use by one or more public agencies.

# Alternatives Analysis

- Cultural Documentation:
  - > Archival research
  - > Native American communication
  - > Field study
  - > Resource documentation
  - > Reporting
- Biological Analysis

# Alternatives Analysis

- Which alternative best meets the project purpose?
- Which alternative provides for the most feasible route?
- Which alternative will people use the most?

# Next Steps

- Initial Study (ISMND)
- Transportation Review
- 30% Construction Documents (November 2015)