

Your Local Resource Conservation District



Presented to
Midcoast Community Council
May 11, 2016



Since 1939

in partnership with



San Mateo County Resource Conservation District

What We Do

- ◆ Technical Assistance
- ◆ Project Implementation
- ◆ Conservation Planning
- ◆ Education and Outreach



Partnerships



San Mateo County Resource Conservation District

Our Work Is

- ◆ Non-regulatory
- ◆ Confidential
- ◆ Free



San Mateo County Resource Conservation District

Our Program



Water



Climate



Wildlife



Agriculture



San Mateo County Resource Conservation District



Water



Climate



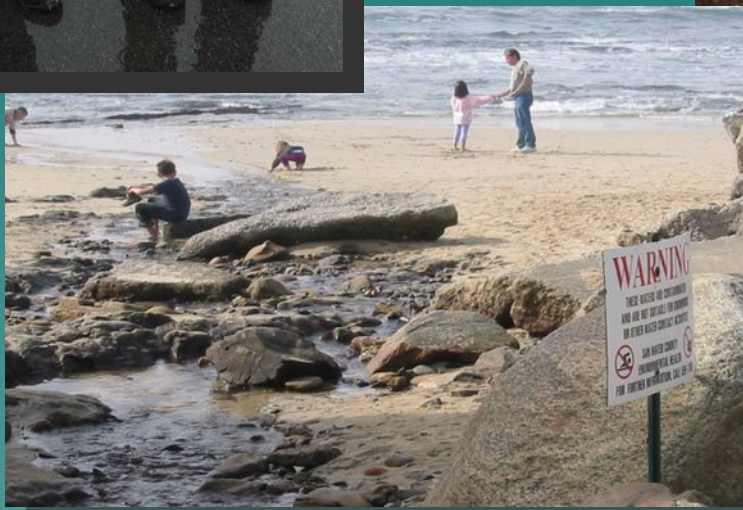
Wildlife



Agriculture



San Mateo County Resource Conservation District



San Mateo County Resource Conservation District





San Mateo County Resource Conservation District



The San Mateo County Resource Conservation District delivers local solutions and real results for natural resource conservation in partnership with landowners, farmers, public agencies, non-profit organizations, and more.

[View this email in your browser](#)

ALERT

RAINS ARE COMING, TIME TO CLEAN UP PET WASTE!



Did you know:

- that recent water quality monitoring on the Coastside has shown that dog and other pet waste across the landscape, even in backyards, is affecting the health of our local creeks and the ocean?
- that we are expecting rain tonight?

NOW is the time to clean up pet waste in your backyard! Spend a few minutes today picking up what your pet left behind, and help prevent waste from entering creeks and the ocean!



San Mateo County Resource Conservation District





Notice
The sand, sediment and water at this beach are subject to periodic bacterial contamination due to land and/or marine mammal excreta, natural process enhancement, tides, or disturbing the sand/sediment in contact with the water. Ingesting the sand or drinking water may pose health risks.
For further information contact:
San Mateo County Environmental Health
(650) 363-4300

Atención
La arena, el sedimento y el agua en esta playa son susceptibles a la contaminación bacteriana por heces marplatadas, y a procesos de disturbancia natural. El contacto con la arena/sedimento o el agua puede representar un riesgo a la salud. Ingestar arena o beber agua puede representar un riesgo a la salud.
Para el mayor detalle de información:
San Mateo County Environmental Health
(650) 363-4300



San Mateo County Resource Conservation District





San Mateo County Resource Conservation District





San Mateo County Resource Conservation District





SILICON VALLEY
Water Conservation
AWARDS

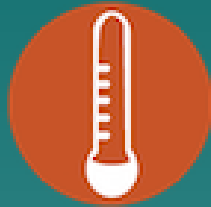


San Mateo County Resource Conservation District





Water



Climate



Wildlife



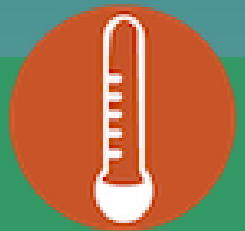
Agriculture



San Mateo County Resource Conservation District

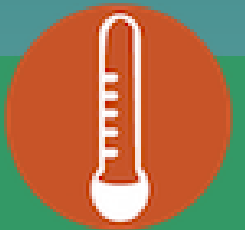


San Mateo County Resource Conservation District



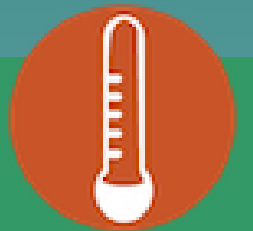


San Mateo County Resource Conservation District





San Mateo County Resource Conservation District





San Mateo County Resource Conservation District





Water



Climate



Wildlife



Agriculture

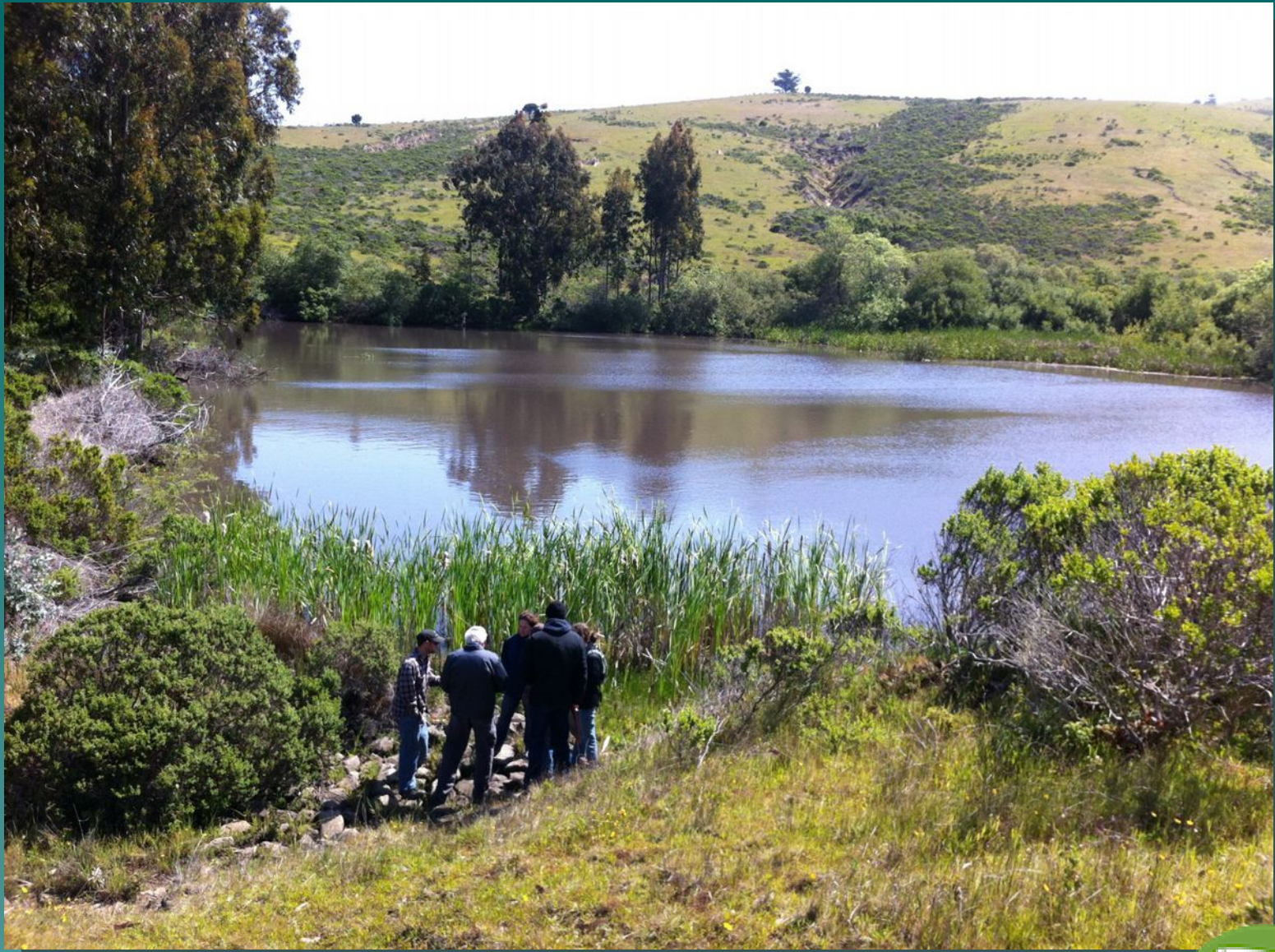


San Mateo County Resource Conservation District



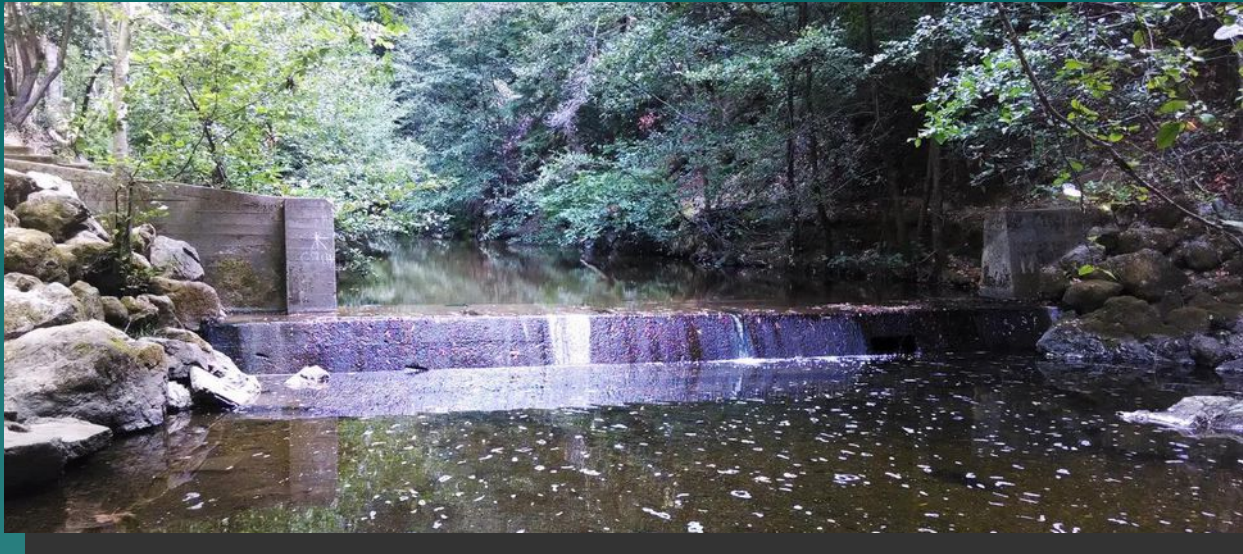
San Mateo County Resource Conservation District





San Mateo County Resource Conservation District





before

after



San Mateo County Resource Conservation District





San Mateo County Resource Conservation District





before



after



San Mateo County Resource Conservation District





Water



Climate



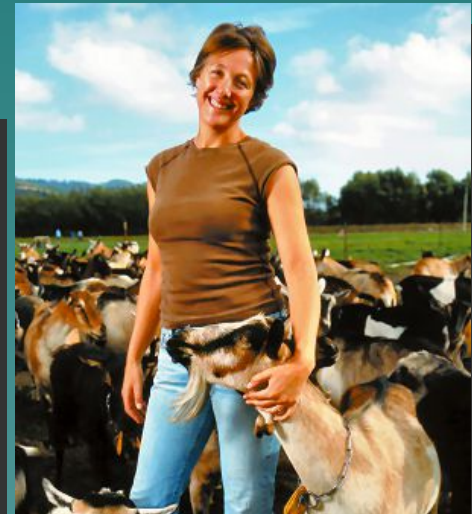
Wildlife



Agriculture



San Mateo County Resource Conservation District



San Mateo County Resource Conservation District



Balancing Demands



San Mateo County Resource Conservation District

Education and Outreach



San Mateo County Resource Conservation District



San Mateo County Resource Conservation District

\$1 = \$42

property taxes state & federal





Thank you!

Kellyx Nelson

Executive Director

kellyx@sanmateorcd.org

(650) 712-7765 x102

www.sanmateorcd.org

www.facebook.com/sanmateorcd

YouTube: "sanmateorcd"



San Mateo County Resource Conservation District