

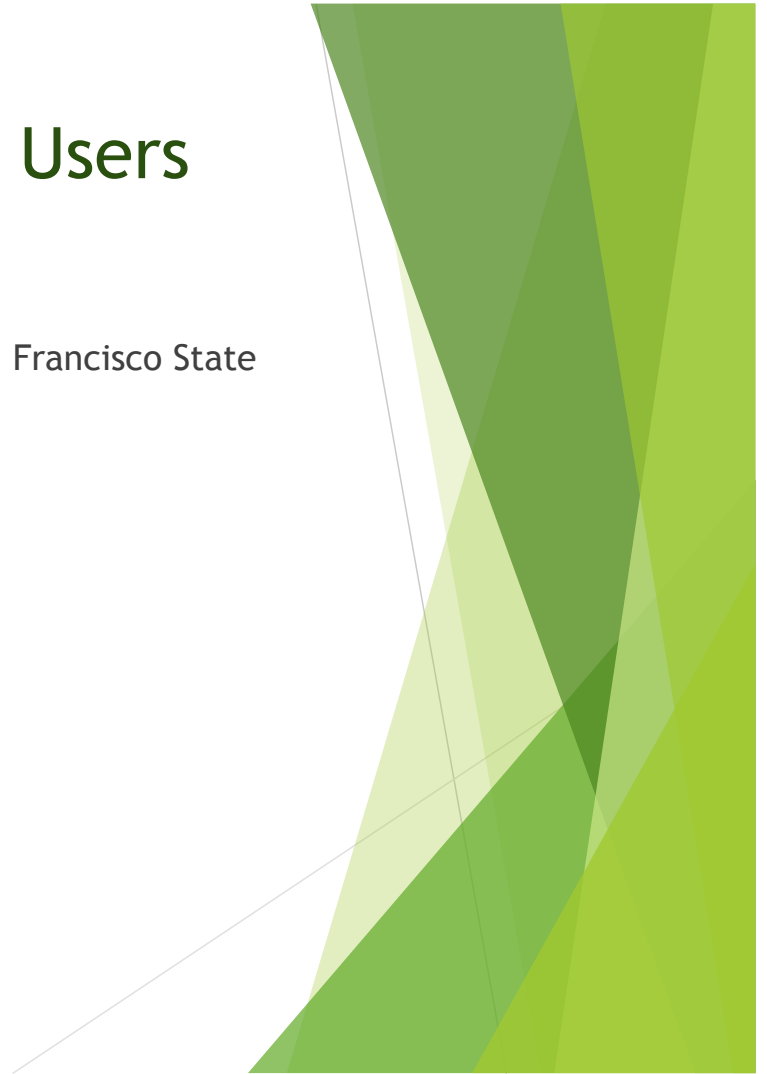
# San Mateo County Parks Department



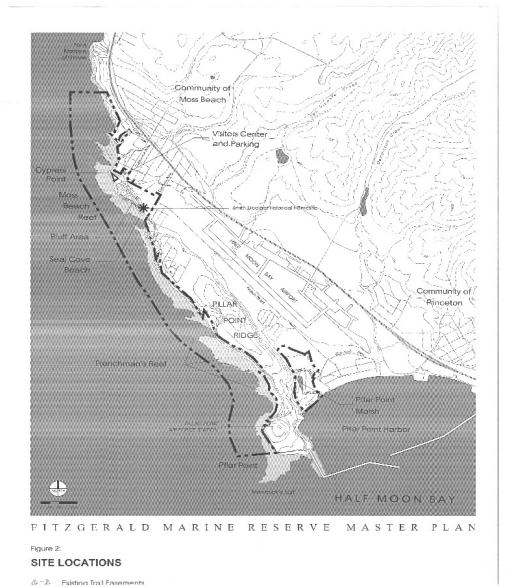
Midcoast Community Council  
April 27, 2016

# Visitor Survey of County Park Users

- ▶ Survey of County Park users: April 25, 2016 to May 5, 2016
- ▶ Scientifically valid survey conducted in cooperation with San Francisco State University Department Recreation, Parks, and Tourism.
- ▶ Parks to be surveyed in Midcoast include:
  - ▶ San Pedro Valley
  - ▶ Devils Slide Coastal Trail
  - ▶ Fitzgerald Marine Reserve
  - ▶ Pillar Point Bluff
  - ▶ Moss Beach Park
  - ▶ Mirada Surf Coastal Trail
  - ▶ Quarry Park

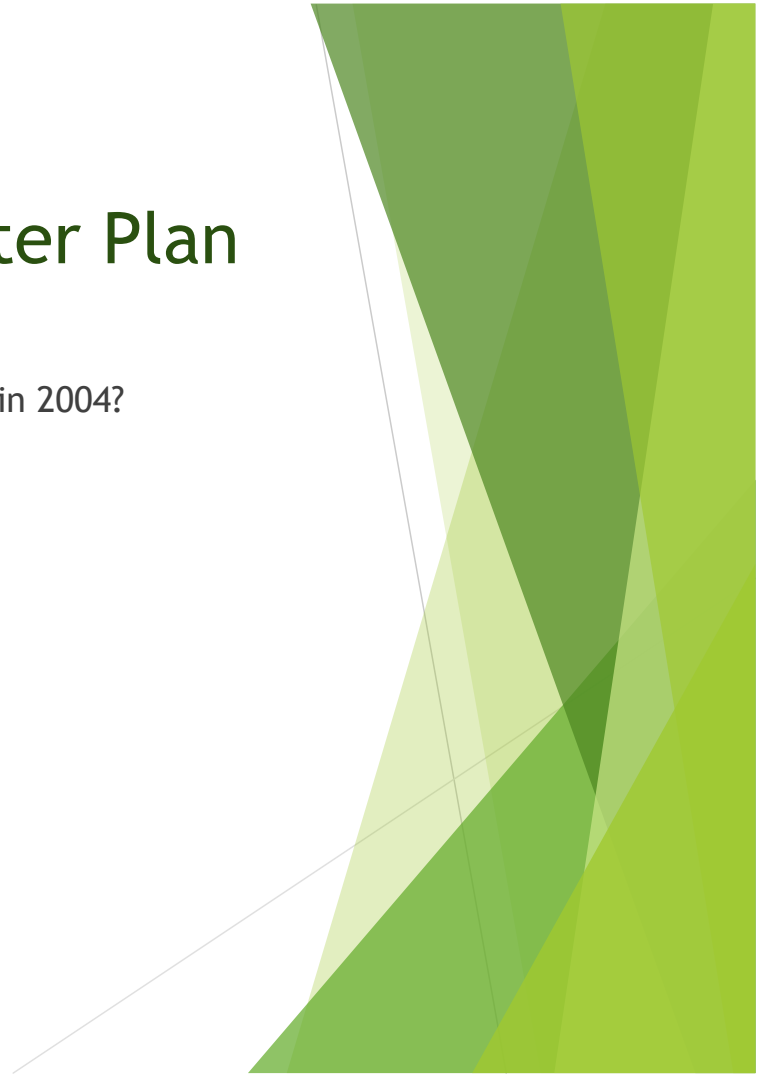


# Fitzgerald Marine Reserve Master Plan (2004)

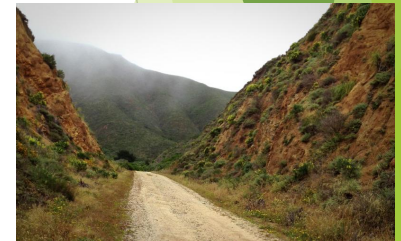
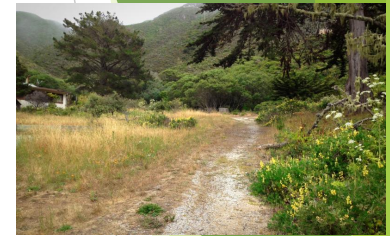


# Assessment of the Fitzgerald Marine Reserve Master Plan

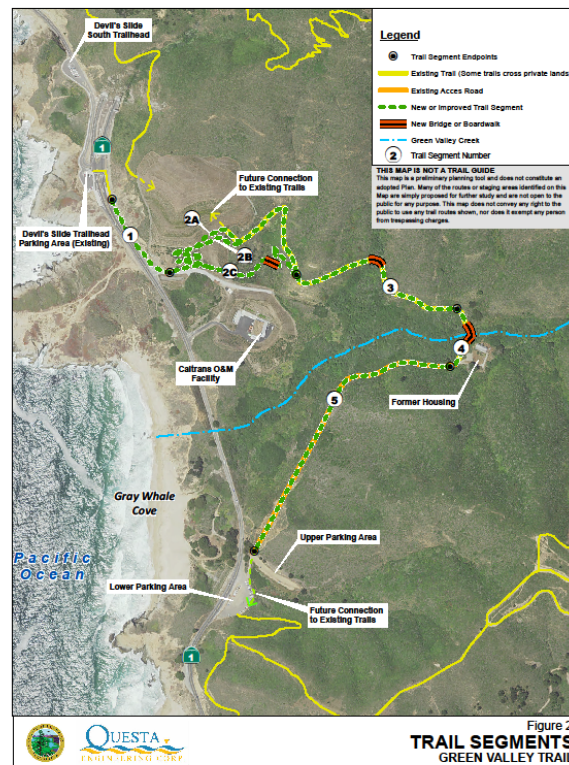
- ▶ What has been implemented since Master Plan was adopted in 2004?
- ▶ What has not yet been implemented?
- ▶ Changes since 2004
- ▶ Barriers to Implementation
- ▶ Success
- ▶ Next Steps
- ▶ Visitation:
  - ▶ 1993 Peak Year of Record when Master Plan approved - 135,000
  - ▶ January 2016 - 220,254



# Green Valley Trail



# Green Valley Trail



# Green Valley Trail

- ▶ California Coastal Trail
- ▶ California State Park and CalTrans properties
- ▶ Design at 60%
- ▶ CEQA and permits Fall 2016
- ▶ Funding for construction needed
- ▶ Construction date not confirmed



# King Tides, Storm Surge, El Niño New Normal?





# Mirada Surf Hazard Signs Installed



# Pillar Point Bluff

- ▶ Continued emphasis on restoration and access
- ▶ Identify opportunity areas restoration of native habitat
- ▶ Define a managed trail system, reduce erosion caused by trails
- ▶ Adapt to receding cliff faces
- ▶ Address public safety
- ▶ Maintain the service road/trail access from West Point Ave to Jean Lauer Trail on Pillar Point Bluffs.

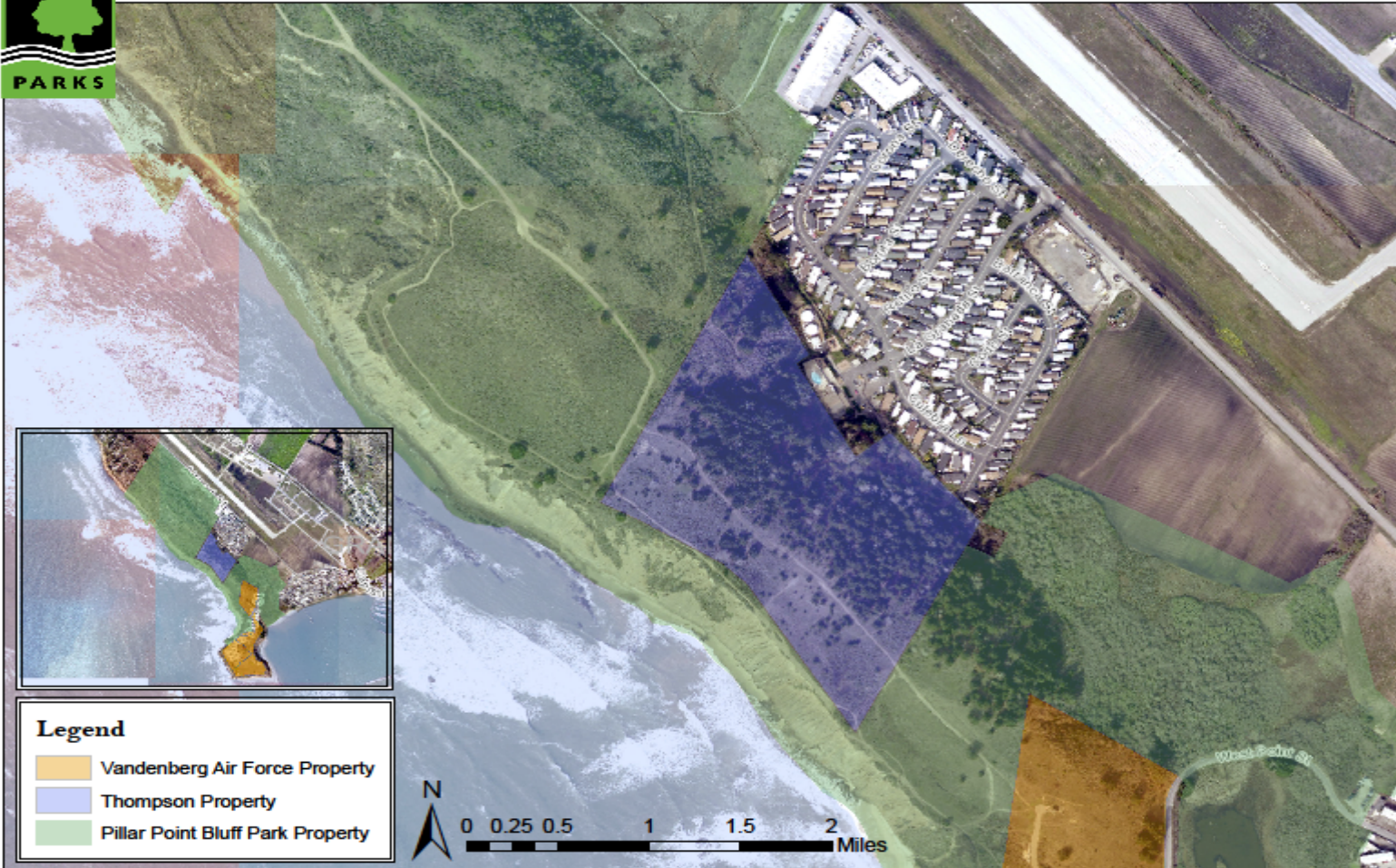


# Pillar Point Bluff Trails

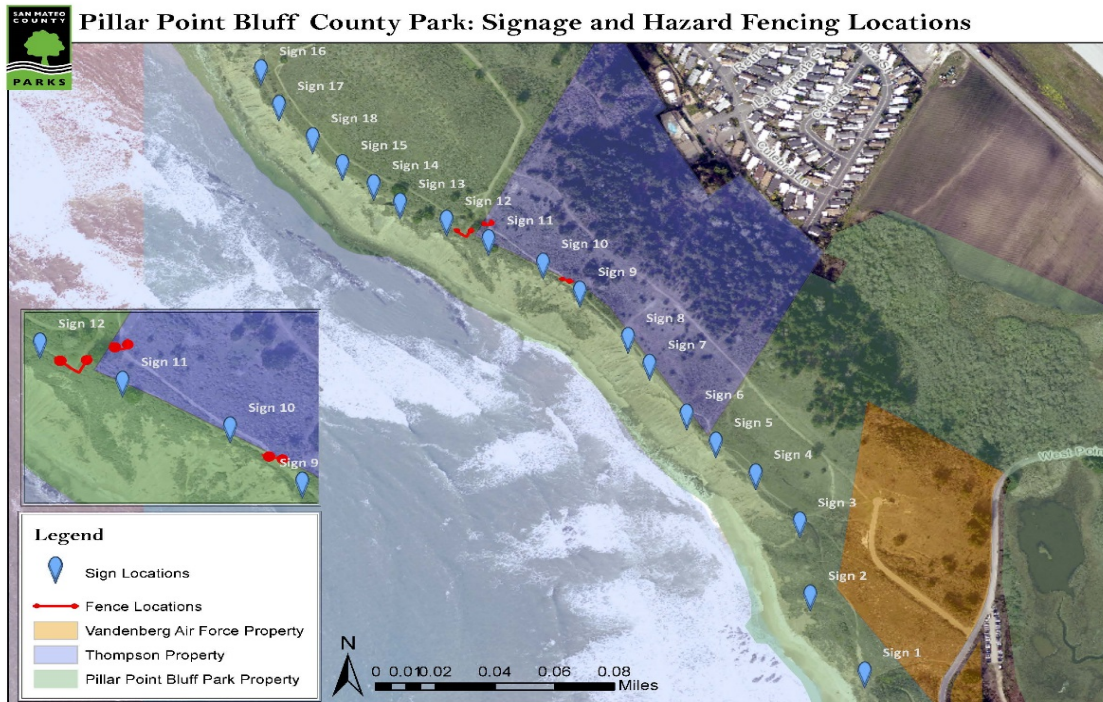




## Pillar Point Bluff County Park: Road Rehabilitation Area



# Pillar Point Bluff Hazard Signs and Fencing



## Is it Time for a Portolá Trail Designation in San Mateo County?

Paul O. Reimer



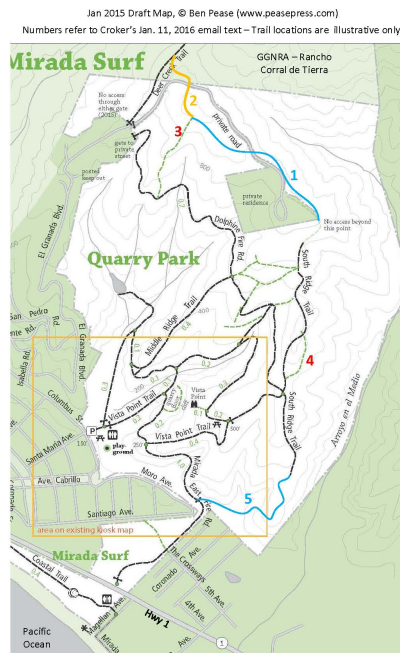
*Discovery of San Francisco Bay, a 1971 painting by Morton Künstler, is on exhibit at the San Mateo County History Museum. Don Gaspar de Portolá is depicted viewing the San Francisco Bay from Sweeney Ridge on November 4, 1769.*

# Portolá Trail

- ▶ Portolá expedition took place in 1769 from Spain to Baja Mexico to Sweeny Ridge overlooking San Francisco Bay.
- ▶ Based on diaries their route is known to have covered approximately 50 miles along coastal Santa Cruz and San Mateo Counties, and involved 6 camps.
- ▶ 250<sup>th</sup> Anniversary of the Expedition is on November 4, 2019.
- ▶ County Supervisor Don Horsley is chairing a committee of key agencies and legislators interested in this route
- ▶ Initial focus is San Mateo County
- ▶ Next meeting will be focused on:
  - ▶ Native Indian settlements and relationship to the Portola route
  - ▶ Opportunities for completion of California Coastal Trail
  - ▶ Wayfaring signs for historic and recreational routes
  - ▶ Rivers, Trails and Conservation Assistance (RTCA) Program Grant

# Quarry Park Master Plan

- ▶ Funds available to initiate Master Plan for Quarry Park Master Plan in 2016, which will include Quarry, Wicklow, and Mirada Surf East and West properties.
- ▶ Trail Center volunteers identified trail loop opportunities for Quarry/Wicklow





# Wicklow Fire Break

- ▶ Fire fuel break improvements in 2006 by POST (previous owner)
- ▶ Fuel break improvements along western Wicklow boundary were made in 2015 by County Parks.



# Pre Wicklow Fire Break Improvements and During Operation



# Post Wicklow Fire Break Improvements



# Questions?



Marlene Finley  
Parks Director  
San Mateo County Parks  
[mfinley@smcgov.org](mailto:mfinley@smcgov.org)  
650-599-1394



